

# ALPHA GOLD CORPORATION

Exciting Drill Results from the

# LUSTDUST Copper-Gold property, central B.C.

885183



## Copper-gold mineralization in Lustdust drill-core.

Alpha Gold Corp.

Contact: George Whatley

Tel: 604 939 4083

Fax: 604 939 4981

email: alpha-gold@shaw.ca

or: agc@alphagold.bc.ca

ALQ on the Vancouver-Toronto exchange (TVX)

## Introduction

The 2002 season's drilling at Alpha Gold Corporations Cu-Au-Ag Lustdust property has hit significant intersections of copper-gold-silver mineralization hosted by sulphide-rich skarns (Oliver, 2002). Outstanding examples include drill widths of 15 m grading 24 g/t Au, 2.19% Cu & 80 g/t Ag (Hole 02-09) and 18.7 m grading 0.95 g/t Au, 1.62% Cu & 17 g/t Ag (Hole 02-01).

The property lies 210 km north of Prince George and 35 km east of Takla Landing in central B.C. It is readily accessible from Fort St James via a gravel, all-weather road and comprises 230 contiguous mineral claim units totaling 4800 hectares. The southern part of the property includes the exploratory tunnels of the "Takla Silver Mine" (BC MINFILE 093N 009), a developed prospect that contains Au-Ag-rich veins (Fig. 1; Ray et al., 2002).

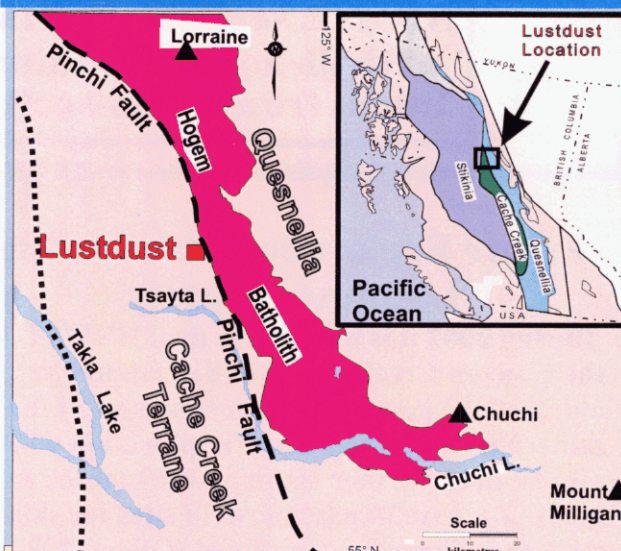


Fig. 1: Geology of the Lustdust-Takla Lake district (after Wheeler et al., 1991).

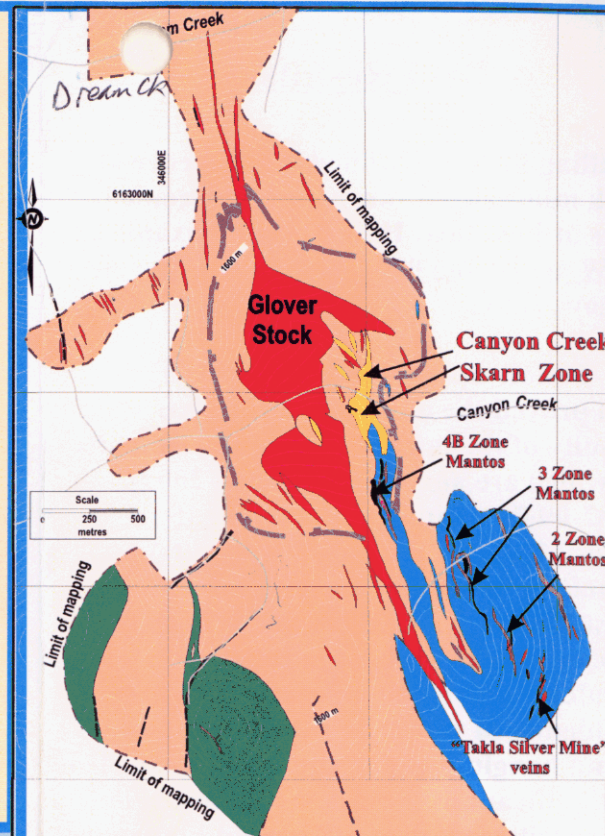


Fig. 2: Geology of the Lustdust property showing location of the skarns, mantos & veins (after Ray et al., 2002).

## Geology

Lustdust represents a well mineralized Cu-Au-Zn-Ag skarn-manto-vein system that is traceable over a 2 km strike length. It is related to an Eocene-age (51 million years) elongate intrusion, the Glover Stock and is hosted by Permian calcareous sediments of the Cache Creek Group only 1.5 km west of the major Pinchi Fault (Figs. 1 & 2).

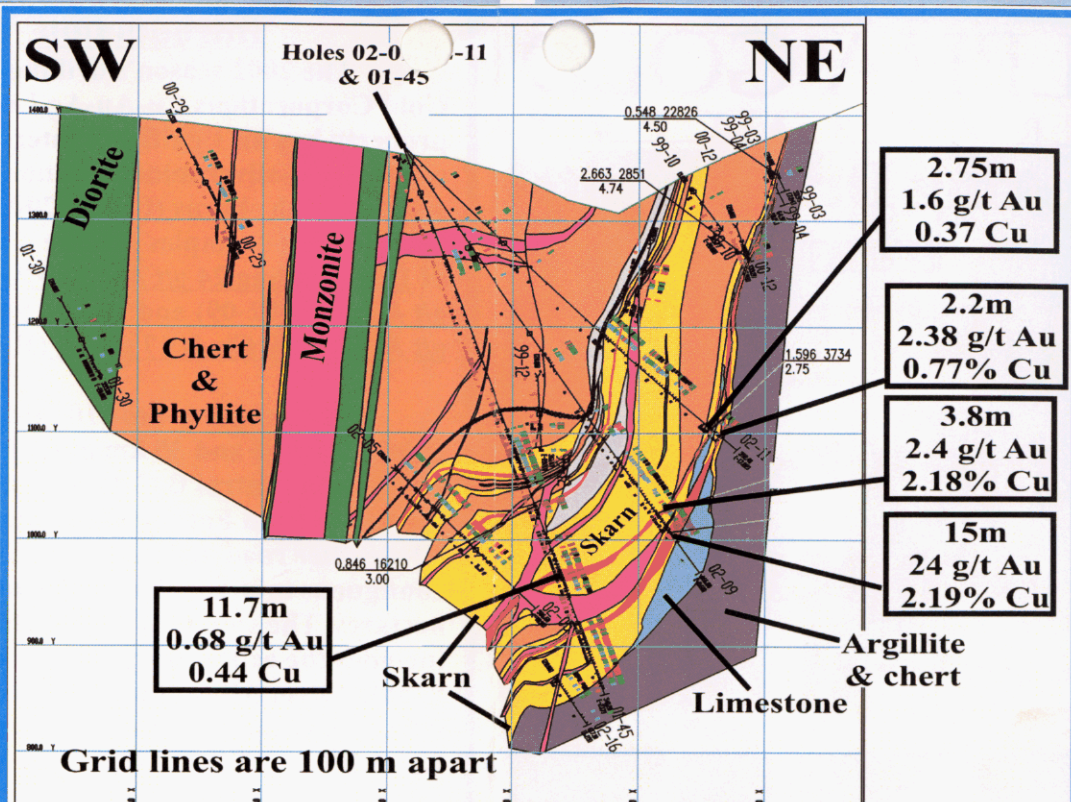
## Drill Results

Drilling in 2001 outlined the presence of thick mineralized skarn and replacement zones at Lustdust; Hole 01-44 for example cut 59 m grading 0.8% Cu and 0.67 g/t Au (Megaw, 2001).

Follow-up work during the 2002 season proved the down-dip and on-strike continuity of the mineralized zones, virtually all of which are auriferous (Oliver, 2002). Hole 02-09 for example intersected 15 m grading 2.19% Cu, 24 g/t Au & 80 g/t Ag. The main garnet-rich Canyon Creek Skarn has a strike length of 650 m and is open to the north. Two additional parallel mineralized skarn and replacement zones were identified which lie close to the foot-wall and hanging-wall of the main skarn. The most significant of these is the footwall zone. It has a strike length of 500 m and is open in three directions (Oliver, 2002).

Nineteen N diamond drill-holes totaling 7790m were completed during the 2002 season, and these reveal the good economic potential of the property. Some of the significant mineralized intersections as presented by Oliver (2002) include:

Hole	From (m)	To (m)	Length (m)	Cu%	Au g/t	Ag g/t
02-01	531.3	550.0	18.7	1.62	0.95	17.10
02-02	510.5	511.5	1.0	0.87	61.27	100.00
02-06	240.4	244.4	4.0	1.03	1.32	31.24
02-07	264.4	274.6	10.2	1.40	1.78	34.58
02-09	417.3	432.3	15.0	2.19	24.04	80.67
02-09	401.0	404.8	3.8	2.18	2.41	38.16
02-11	361.8	364.6	2.75	0.37	1.60	13.19
02-11	371.9	374.1	2.2	0.77	2.38	22.11



SW-NE section showing intersections by a number of drill-holes including 02-09 & 02-11. Taken from cross-section I-I, see Oliver (2002)

## Future Exploration Plans on the Lustdust Property

During 2003 it is planned to drill NNW of the Canyon Creek Skarn to determine the along-strike and down-dip extensions of the mineralized Cu-Au zones. Exploration will also be done further south on the mantos and veins. At least 30 possible drill sites for this next phase have been outlined (Oliver, 2002).

## References

- Oliver, J.L. (2002): Report on 2002 Exploration and Diamond Drilling, Lustdust Property, Omineca Mining Division, B.C. Unpublished report for *Alpha Gold Corp.*, November 15, 2002, 62 pages.
- Megaw, P. M. (2001): Report on 2001 Drilling and Geological study of Lustdust Property, Omineca Mining Division, British Columbia; unpublished report for *Alpha Gold Corporation*, 132 pages.
- Ray, G.E., Webster, I., Megaw, P., McGlassen, J., and Glover, . (2002): The Lustdust Property in central British Columbia: a Polymetallic Porphyry-skarn-manto-vein System. *British Columbia Ministry of Energy and Mines, Geological Filedwork 2001, Paper 2001-1*, pages 257-280.

This brochure was prepared for Alpha Gold Corp., by G.E. Ray, P.Geo., and J.L. Oliver, P.Geo.