

 **NEWCANTECH**  
VENTURES INC

**Corporate Presentation**

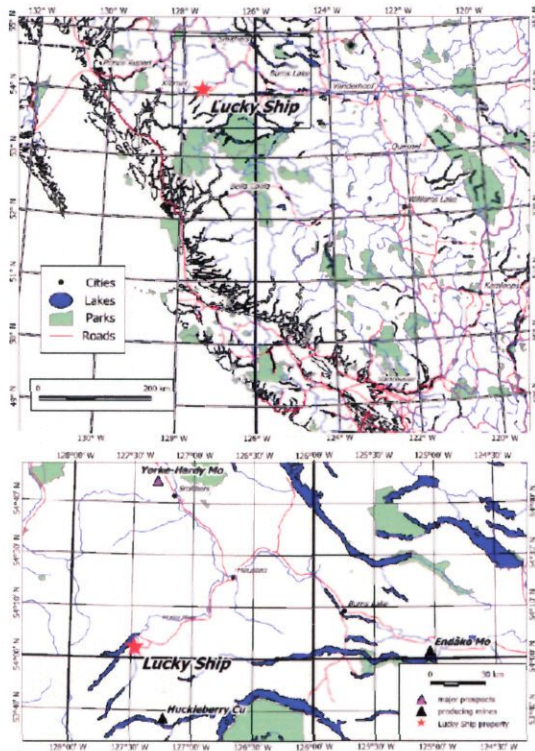


TSX.V: NCV

885151

→ LuckyShip  
CFX Mail  
Sep 15/03

## Lucky Ship Molybdenum Property Location



Location Map

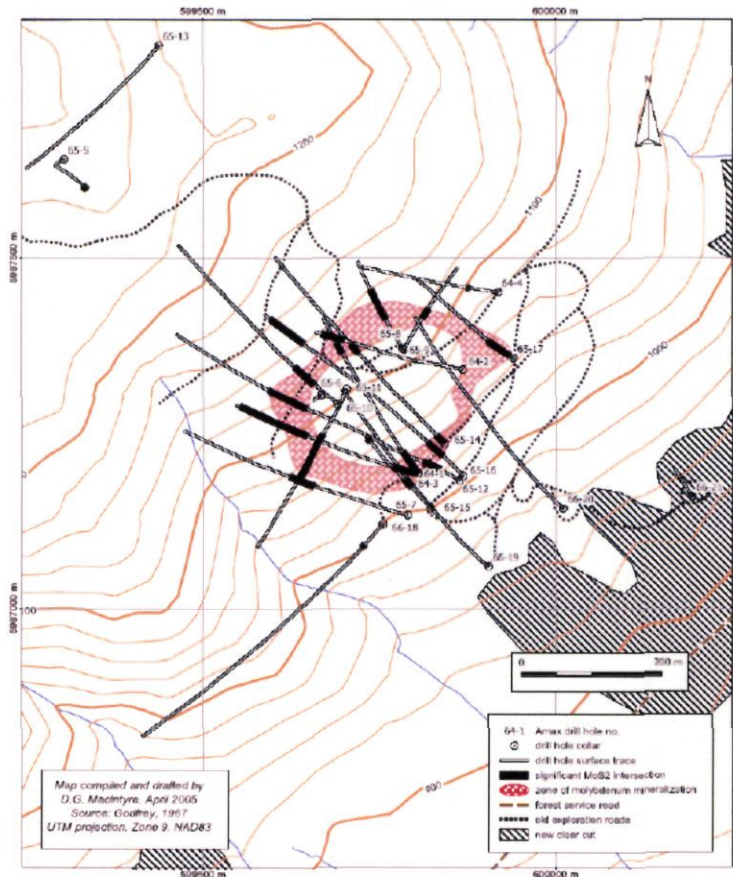
Fig. 1 Location of the Lucky Ship Property

- Property located near Houston, British Columbia
- Historical reserves 18 million tonnes (20 million tons) 0.1690 MoS<sup>3</sup> (Molybdenite)
- Upper portion grade 0.2090 MoS<sup>3</sup> estimates based on historical data, Amax Explorations data in mid 1960's \*
- Estimated recovery approx. 2 lbs Mo per ton
- Current market price molybdenum \$38.25 per lb.

*\*not National Policy 43-101 compliant*



## Lucky Ship Molybdenum Property Overview



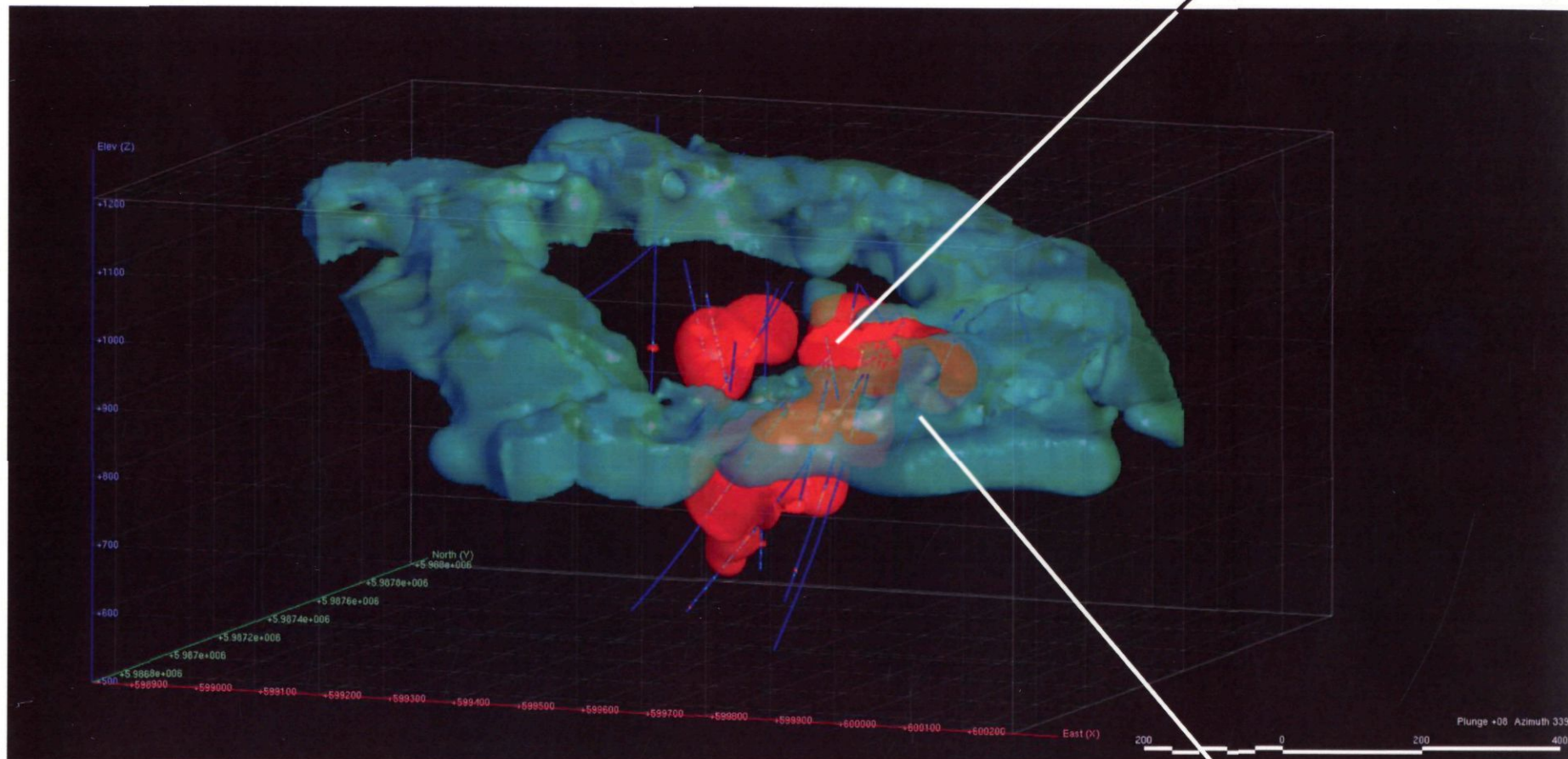
- 16,000 feet drilling Amax Exploration
- 10,000 feet drilling by New Cantech Ventures INC Summer 2005
- Drilling designed to confirm previous assay and outline 3-5 million ton open pit deposit

### Drill Hole Locations

Fig. 6 Drill Hole Locations – Lucky Ship Property (after Godfrey, 1967)

# Included Polarization Survey

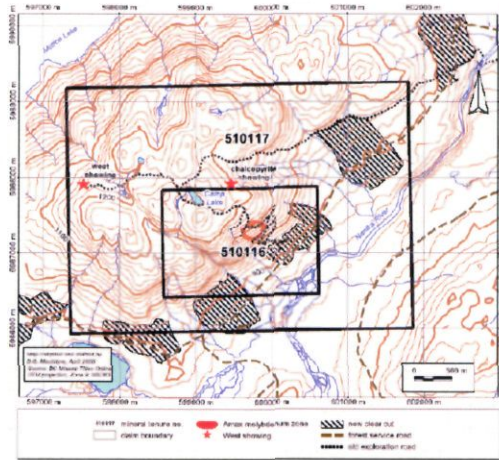
Molybdenite Deposit



Pyrite Halo



# Lucky Ship Molybdenum Property



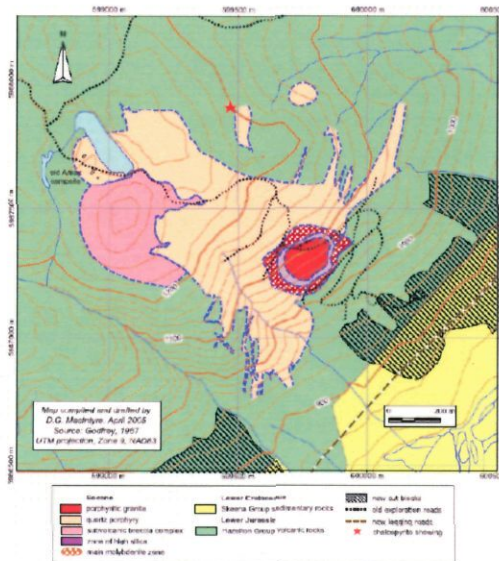
**Claim Map**

Fig. 2 Claim Map, Lucky Ship Property



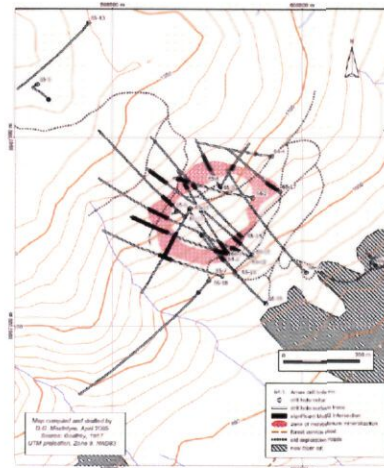
**Lucky Ship Location**

Fig. 1 Location of the Lucky Ship Property



**Geology**

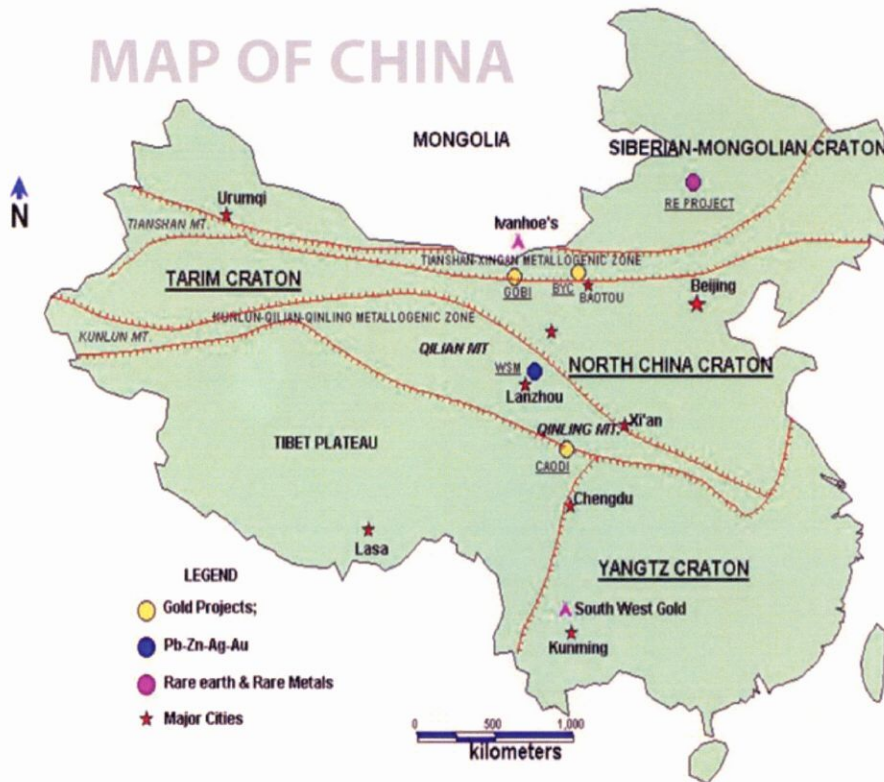
Fig. 4 Geological Map of the Lucky Ship Property (after Godfrey, 1967)



**Drill Hole Locations**

Fig. 6 Drill Hole Locations - Lucky Ship Property (after Godfrey, 1967)

## BYC Project Location



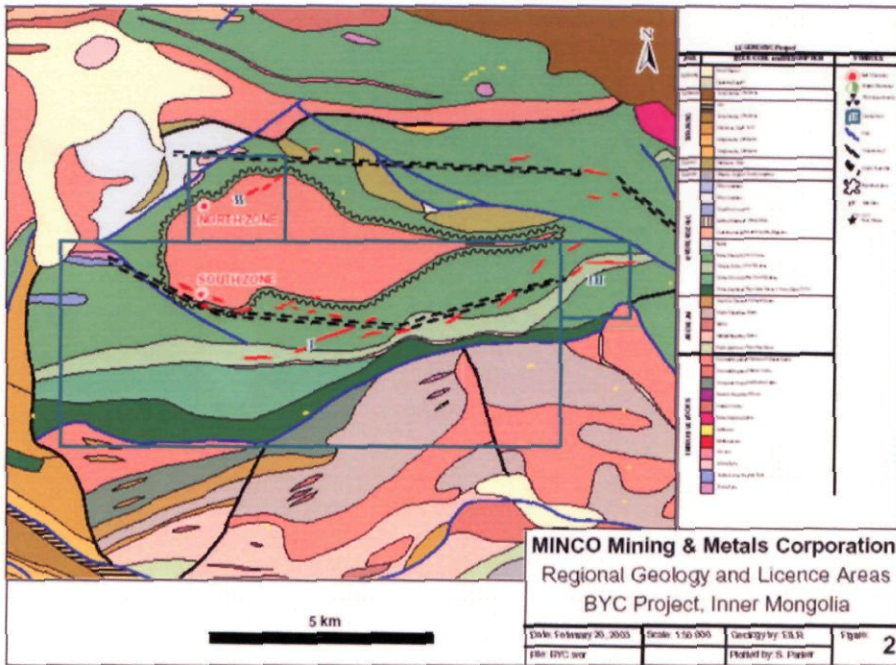
- Property located in Inner Mongolia, China, 150 km south of Ivanhoe Mines Tourquoise Hill project
- Road accessible

### Location Map

Figure 1. BYC Location and Tectonic Map (taken from Oliver, 2003)



## BYC Project Geology



- Property hosts 12 km of the Tian Shan gold belt which hosts the Maruntau (140 million ounce gold deposit)

### Regional Geology

Fig. 2 Regional Geology and Licence Areas (from Oliver, 2003)

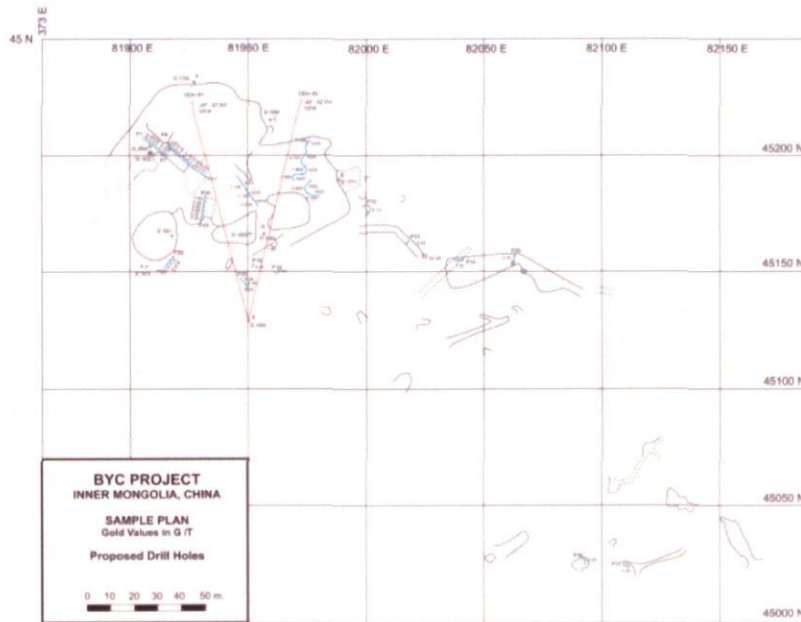
## **BYC Project North Pit**



- 400,000 tons mined illegally grading an estimated 3 grams of gold per ton
- Trench sample in pit 9 metres 71 grams of gold per ton
- Drilling down dip of open pit zone



## BYC – Drilling Results



### Proposed Drill Holes

Fig. 5. North Zone Sample Plan, by P. Folk, P.Eng

- Property under option from Minco Mining and Metals
- Hole #6 1.72 m 38.08 g gold per ton  
1.5 m 73.7 g gold per ton
- Hole #1 26.9 m 0.947 g gold per ton
- Hole #2 12.7 m 1.12 g gold per ton
- Hole #4 50.6 m 1.01 g gold per ton
- 3,000 m (10,000 foot) drill program planned 2005

OUTCROP SAMPLES							
Sample	Cu	Mo	Au	Ag	Pb	Zn	
231143	532	3	14	0.8	11	161	
231144	1,243	5	180	6.6	45	112	
231145	104	1	4	0.3	3	83	
231148	21	2	1	0.3	3	49	
231149	60	4	3	0.3	8	274	
272693	1,866	14	36	1.8	8	94	
560612	1,594	8	5	1.2	4	194	
560613	6,019	12	10	5.2	8	133	
560614	8,108	2	30	5.5	46	229	
560615	974	4	520	8.7	132	191	
560616	66	2	1	0.3	5	113	
560617	1,544	2	42	17.7	10	334	
560618	29	4	50	0.5	13	234	
560619	9.09%	10	220	41.3	13	260	
560620	50	1	1	0.3	14	88	
560621	434	1	445	4.7	46	913	
560622	17	10	5	0.3	4	71	
560623	31	19	21	0.3	5	152	
560624	8,601	13	25	15.9	20	177	
560626	40	1	1	0.3	9	305	
560633	6	2	1	0.3	7	86	
560634	14	4	1	0.3	4	31	

FLOAT SAMPLES							
Sample	Cu	Mo	Au	Ag	Pb	Zn	
231146	61	2	2	0.3	3	46	
231147	197	1	2	0.3	7	69	
231150	19	26	12	0.3	10	188	
272651	1,023	18	2	0.7	3	61	
560625	57	1	15	0.4	9	123	
560627	7	1	1	0.3	4	36	
560628	12	2	1	0.3	11	75	
560629	59	2	4	0.3	17	84	
560630	8	2	1	0.3	3	66	
560631	8	1	1	0.3	6	78	
560632	9	11	2	0.3	7	35	
560635	3	1	1	0.3	22	96	

Cu in ppm  
Outcrop Samples

▲ > 1,000  
▲ 500 to 1,000  
▲ 135 to 500  
▲ < 135

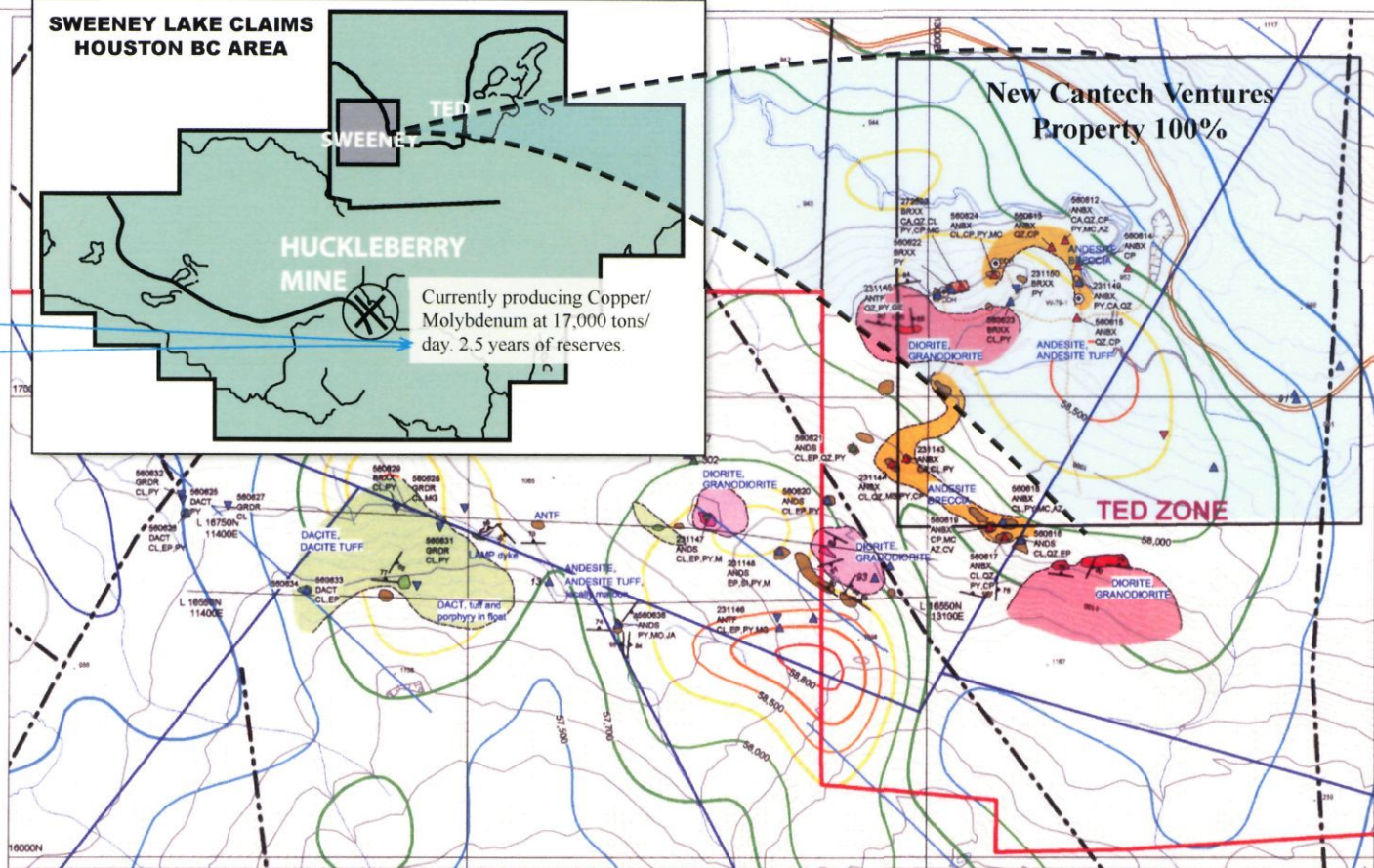
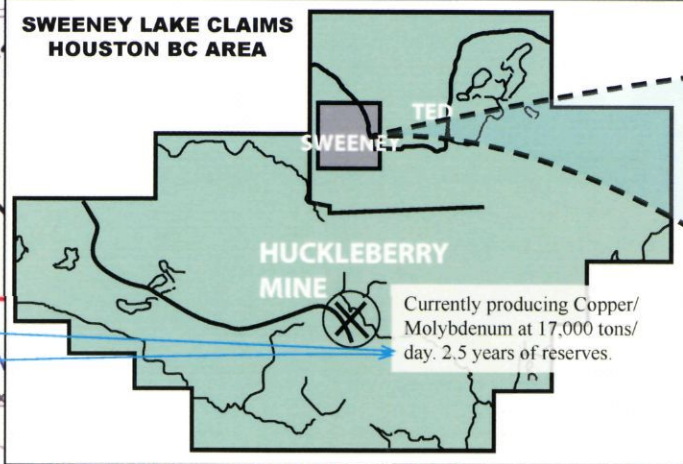
Float Samples

▼ > 1,000  
▼ 500 to 1,000  
▼ 135 to 500  
▼ < 135

560620 ANES CL EP PY ▲ 2001 Rock Sample (Sample No., Lith., Min)

25 ▲ Pre-2001 Rock Sample (ppm Cu)

### SWEENEY LAKE CLAIMS HOUSTON BC AREA



#### LEGEND

##### Upper Cretaceous to Tertiary

Lamprophyre Dyke

##### Upper Cretaceous

Bullseye Intrusions:

Granodiorite

Intrusive Breccia

##### Lower to Upper Cretaceous

Kasaka Intrusions:

Microdiorite and Andesite Porphyry

##### Middle Jurassic

Hazelton Group:

Telkwa Formation:

Andesitic Tuff

Smithers or Whissell(?) Formation:

Daocitic tuff

— Road, Trail

— Geologic Contact

— Fault or Topographic Lineament (Noranda, Kenno)

— Fault or Topographic Lineament (Imperial)

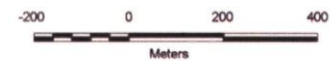
— Airborne Geophysical Lineament

87 Fault, with dip

87 Fracture, with dip

⊙ Diamond Drill Hole

57,500 Airborne Magnetic Contours (nanoteslas)

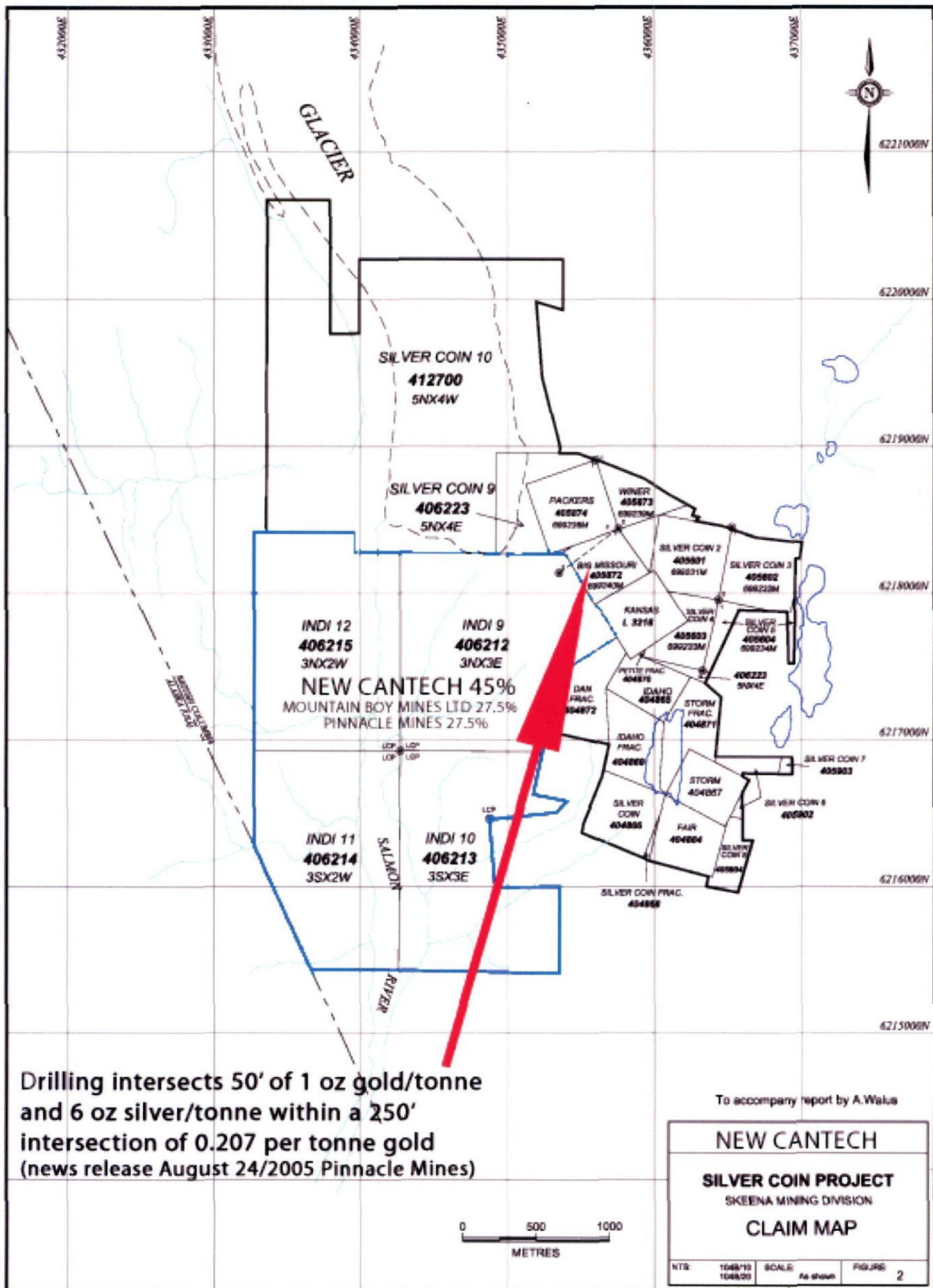


Huckleberry Mines Ltd.

### Ted Zone Geology and Geochemistry

Date: Sept. 2001 NTS Sheet: 93E/11E FIG  
Drawn By: KH,RS,SH Scale: 1:10,000 5





Drilling intersects 50' of 1 oz gold/tonne and 6 oz silver/tonne within a 250' intersection of 0.207 per tonne gold (news release August 24/2005 Pinnacle Mines)

To accompany report by A. Walus

<b>NEW CANTECH</b>		
<b>SILVER COIN PROJECT</b>		
SKEENA MINING DIVISION		
<b>CLAIM MAP</b>		
NTS:	1048/10 1048/20	SCALE: As shown
FIGURE:	2	

## **Management**

**Dalton Dupasquier**

**President & Director**

Former Stockbroker & Former Director, Manitoba Mineral Resources, former director Winspear Resources. Winspear was taken over by De Beers Diamonds for \$300 million cash.

**Ross Ronald Blusson, Geologist**

**Chairman & Director**

Discovered Equity Silver Mine deposit.

**Richard W. Grayston, PHD, MBA**

**Director**

**James D. Jacuta, LLB**

**Director**

**William Meyer, P.Eng. Geologist**

**Director**

Former Vice President Teck Corporation and Chairman of Minco Mining and Metals Corporation.



## Share Structure

### Share Capital:

Issued	22,000,000
Property Acquisition	2,000,000
Options	893,000
Warrants	5,599,371

Symbol: NCV  
Listed: TSX Venture Exchange