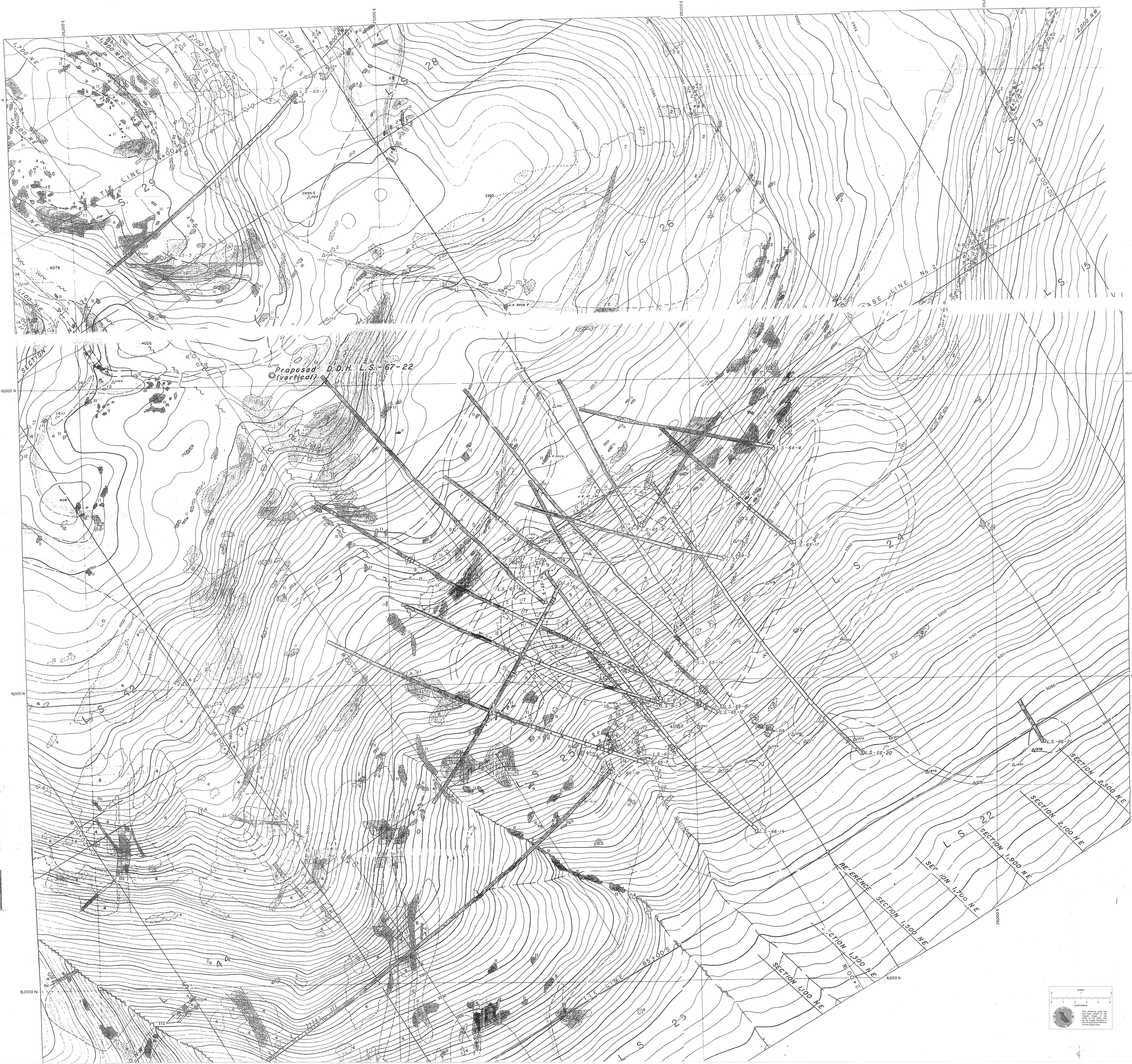
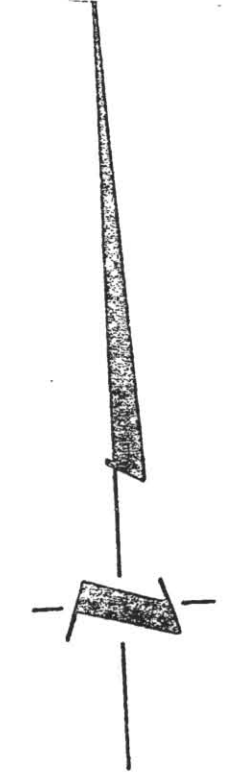


LUCKY SHIP
(Amax)
 Mar. 31/65
 (from New CanTech)



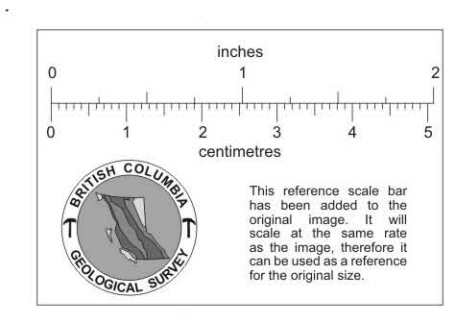
LEGEND

- EXTRUSIVE BRECCIA COMPLEX**
- 17 Sam Leucocratic Quartz Porphyry Breccia.
 - 14 Brown to Green Felsitic Breccia.
 - 11 Green Felsitic Breccia (andesite fragments).
 - 12 Andesitic and Magnetiferous Breccia.
- INTRUSIVE ROCKS**
- 10 Quartz Feldspar Porphyry: II Undifferentiated III Porcellaneous.
 - 11a Crowded Porphyry Dykes. 11c Quartz Porphyry Dykes.
 - 10 Felsite Dykes.
 - 9 Granite (formerly quartz diorite).
 - 8 Diabase.
 - 7 Silica Unit.
 - 6 Grey Cherty Unit.
- HAZELTON VOLCANIC SERIES**
- 5 Crystal Tuff.
 - 4 Andesitic Agglomerate, Lapilli Tuff, Breccias and Massive Intermediate to Basic Flows.
 - 3 Basalt.
 - 2 Fine Laminated to Massive Tuffs - includes some Agglomerate Sections.
 - 1 Grey Breccia.
- CRETACEOUS AND/OR TERTIARY**

SYMBOLS

- Generalized Geological Contact at Surface.
- Generalized Geological Contact of Main Molybdenite Zone projected from 3000' elevation.
- Interpreted Fault.
- Outcrop, Small outcrop, Float.
- Intermittent Stream.
- Road.
- Climb Post.
- Claim Location Line.
- Claim Boundary Line.
- Temporary Survey Station.
- Permanent Survey Station.
- Diamond Drill Hole (collar, geological contact projected to surface).
- Fault in Diamond Drill Hole.
- Fault Gauge Zone in Diamond Drill Hole.
- Breccia - Intensity of Symbols Indicates Intensity of Fragments. - Colour of Fragments Indicates Predominant Rock Type.
- Selected Assay Interval (Footage - % MoS₂).

NOTE -
 Drill hole geology of main molybdenite zone at 3,000' elevation is superimposed on outcrop geology. Outcrops in this area are numbered but uncoloured.



885149
 Lucky Ship
 93L053