

884815

TOS → Leduc
Silver**Schroeter, Tom EMPR:EX**

From: Stan Szary [stan.teuton@shawlink.ca]
Sent: Wed, October 4, 2006 12:04 PM
To: XT:EM Szary, Stanislaw P EM:IN
Subject: JK Zone Update
Attachments: Bell Resources Corporation News Release OC.04.06.pdf; LEDUC_SILVER4.jpg

Please find attached an excerpt from the Bell Resources News Release issued to-day updating their current projects, which include drilling of the JK Zone on Teuton's Leduc Silver property. The Leduc Silver (see map) property is under option to Bell whereby Bell can earn a 60% interest by spending \$1.5 million.

Bell has determined that the Granduc system is a Besshi type deposit and continuity of mineralization over 4 km would place it in the top percentile of these type deposits.

"The continuity of magnetite-pyrrhotite-chalcopyrite mineralization across a 4-kilometre strike length would place Granduc in the top percentiles of Besshi-style VMS deposits. Windy Craggy, located 200 kilometres north of the Granduc property in northwestern British Columbia is the largest known Besshi deposit to date" stated Dr. Tim Marsh, the Company's VP of Exploration."

Windy Craggy is said to contain between 210 and 320 million tonnes of ore grading 1.66% copper, 0.09% cobalt, 3.5 grams silver and 0.2 gram gold. (*The Northern Miner*)

Windy Craggy is by far the world's largest known Besshi-style deposit.

Stan Szary
Tel (604) 682-3680
Fax (604) 682-3992
Toll Free (800) 879-2333

www.teuton.com
stan.teuton@shawlink.ca

Excerpt from Bell Resources Corporation News Release – October 4, 2006

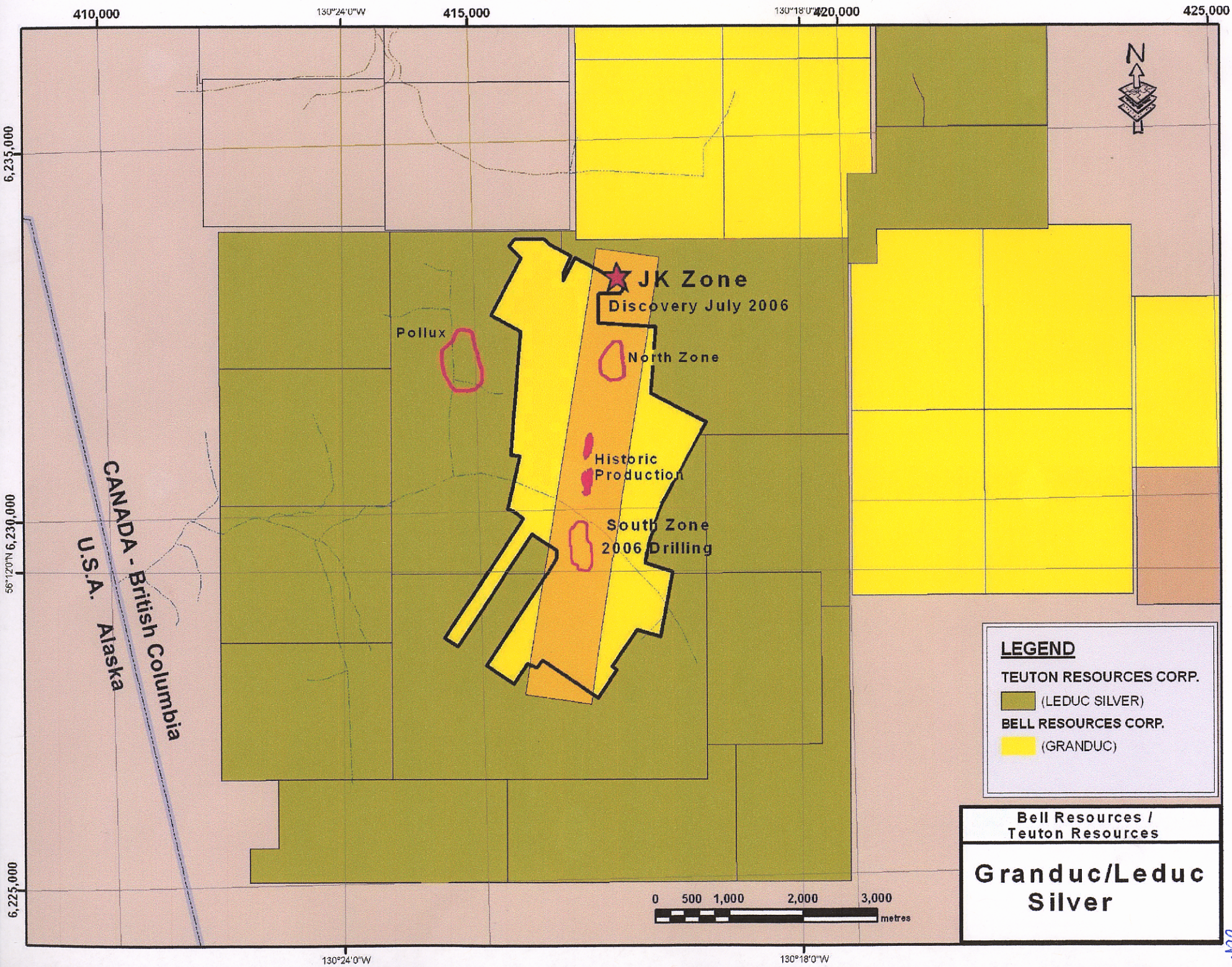
Granduc - British Columbia - Cu, Ag, Au

The past producing **Granduc Project** is a copper-rich VMS-Besshi deposit located 40 km northwest of Stewart in northwestern British Columbia. Significant high grade copper resources in the historically productive Granduc deposit remain in place. Bell is targeting along-strike extensions to the north and south of the zone of past exploration and mining and intends to grow a compellingly large mineral inventory to demonstrate the economics for a mine start up.

Update - August 15 - Assays from the recently completed the Phase II Drill Program, taken together with the 2005 Phase I drilling results, have demonstrated the extension of consistent thickness and grade for at least 770 meters (2500 feet) along strike to the south and extending at least 200 meters (650 feet) down dip from the historic mining at the Granduc.

During the month of August the Company also announced the discovery of a new mineralized zone, the "JK Zone", which was found during surface prospecting work in the North Zone target area of the Granduc project. The JK Zone is 4 kilometres north of the site of this spring/summer's Phase II diamond drilling program in the South Zone and is most likely the northerly strike continuation of the same rock unit that hosts the Granduc orebody. On September 6, 2006 the Company initiated a Phase IIB Drilling Program at the Granduc to drill test this newly discovered mineralized zone (JK Zone). Completion of this program is expected prior to the end of October.

"The continuity of magnetite-pyrrhotite-chalcopyrite mineralization across a 4-kilometre strike length would place Granduc in the top percentiles of Besshi-style VMS deposits. Windy Craggy, located 200 kilometres north of the Granduc property in northwestern British Columbia is the largest known Besshi deposit to date" stated Dr. Tim Marsh, the Company's VP of Exploration."



→ Leduc Silver
021.4/06