

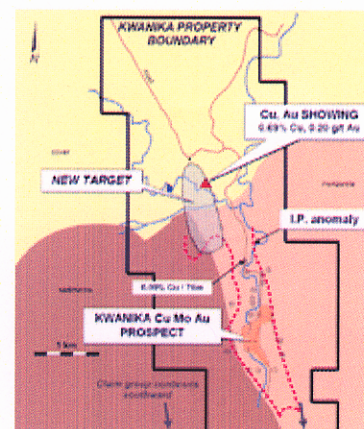
→ Kwanika

884725

KWANIKA PROPERTY

- 28 sq. km
- Road accessible, 85 km North of Mt Milligan
- Prior drilling outlined extensive copper mineralized zone with gold, molybdenum credits
- Recent airborne survey shows new high quality target
- 100% ownership

Encouraging new results have been obtained from the recently completed airborne geophysical survey and ground geochemical sampling program conducted on the Company's Kwanika copper-gold-molybdenum (Cu-Au-Mo) property located in the Quesnel Trough in north-central B.C. A total of 6 new target zones were identified, and one in particular outlined a much larger and stronger system than had previously been discovered on the property.



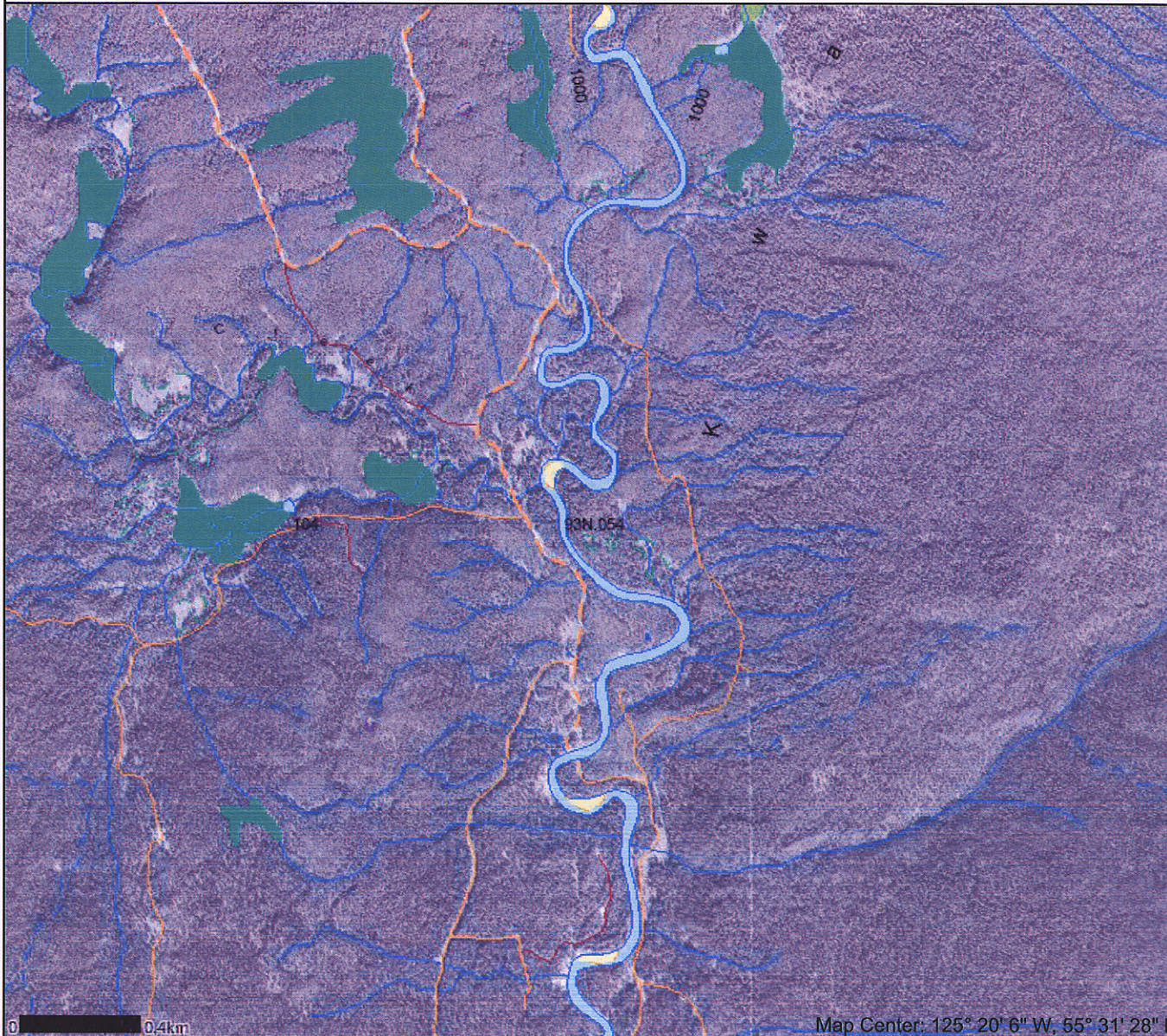
Kwanika Property Geology
click to enlarge

The Kwanika project encompasses approximately 28 sq. km., is road accessible and is situated in the northern portion of the Quesnel Trough, the largest copper-gold porphyry belt in Canada. Serengeti's helicopter geophysical survey confirmed the previously known mineralized occurrences on this project. However, a much more pronounced anomaly, of a sufficient size to reflect a large potential deposit, was identified in an overburden covered area 1.5 kms. north of previous workings. Of primary importance is that this geophysical signature was confirmed by geochemical sampling in this area, with grab samples running up to 0.69 % copper, 0.20 g/t gold and 0.41 % molybdenum from porphyry-style mineralization. Prior geophysical surveying has identified an 800 meter wide, open-ended IP anomaly associated with this target.

Historical work on the Kwanika project has taken place mostly on the southern

Map created Fri Dec 22 10:27:19 PST 2006

Legend



- Indian Reserves
- National Parks
- Parks
- Mineral Tenures Reserves (Sites)
- Placer Claim Designation
- Placer Lease Designation
- No Staking Reserve
- Conditional Reserve
- Release Required Reserve
- Surface Restriction
- Recreation Area
- Others
- Mining Divisions
- Integrated Cadastral Fabric
- BCGS Grid
- Annotation (1:20K)
- Transportation - Points (TRIM)
- Helipad
- Transportation - Lines (TRIM)
- Airfield
- Airport
- Airstrip
- Airport, Abandoned
- Ferry Route
- Road (Gravel Undivided) - 1 Lane
- Road (Gravel Undivided) - 2 Lanes
- Road (Gravel Undivided) - U/C - 1 Lane
- Road (Gravel Undivided) - U/C - 2 Lanes
- Road (Paved Divided) - Not Elevated - 1 Lane Each Way
- Road (Paved Divided) - Not Elevated - 2 Lanes Each Way
- Road (Paved Divided) - U/C - Not Elevated - 2 Lanes Each Way
- Road (Paved Undivided) - Not Elevated - 1 Lane
- Road (Paved Undivided) - Not Elevated - 2 Lanes
- Road (Paved Undivided) - Not Elevated - 4 Lanes
- Road (Paved Undivided) - U/C - Not Elevated - 4 Lanes
- Road (Unimproved)
- Cut (Roadway)
- Embankment/Fill (Roadway)
- Trail
- Bridge - Foot
- Bridge - Trestle
- Tunnel
- Bridge
- Rail Line (Double Track)
- Rail Line (Multiple Track)
- Rail Line (Single Track)
- Rail Line - Abandoned Track
- Spur
- Transportation - Airfield (EBM)
- Air Facility

Scale: 1:20,000

DO NOT USE FOR NAVIGATION

Map Center: 125° 20' 6" W, 55° 31' 28" N