

*Sumac*

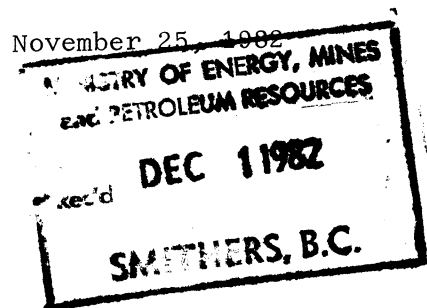
*Kutchok Cr.*  
*884698*

## SUMAC MINES LTD.

BOX 10150, PACIFIC CENTRE  
1650 - 701 WEST GEORGIA STREET  
VANCOUVER, B.C. V7Y 1C6

TELEPHONE  
B.C.  
685-6735

Mr. T. Schroeter, P. Eng.,  
District Geologist,  
B.C. Ministry of Energy, Mines and  
Petroleum Resources,  
Bag 5000,  
Smithers, B.C., V0J 2N0



Dear Tom,

Thank you very much for your letter dated November 15th, 1982.

As per our telephone conversation this afternoon, I will appreciate it if you could make the following corrections:

- Page 2, paragraph 1, line 3  
" ..... Sumac constructed a 20 Km → 12 Km "
- Page 2, paragraph 3

I will recommend as follows:

" Estimated reserves for Sumac portion of East Deposit are  
11.0 million metric tonnes grading 1.68% Cu, 2.14% Zn,  
0.89 oz/st Ag, 0.009 oz/st Au "

Because the figure which you cited has not yet been made public and only seen in newspapers.

Besides that, if you intend to make public, you need a permission from Esso Minerals.

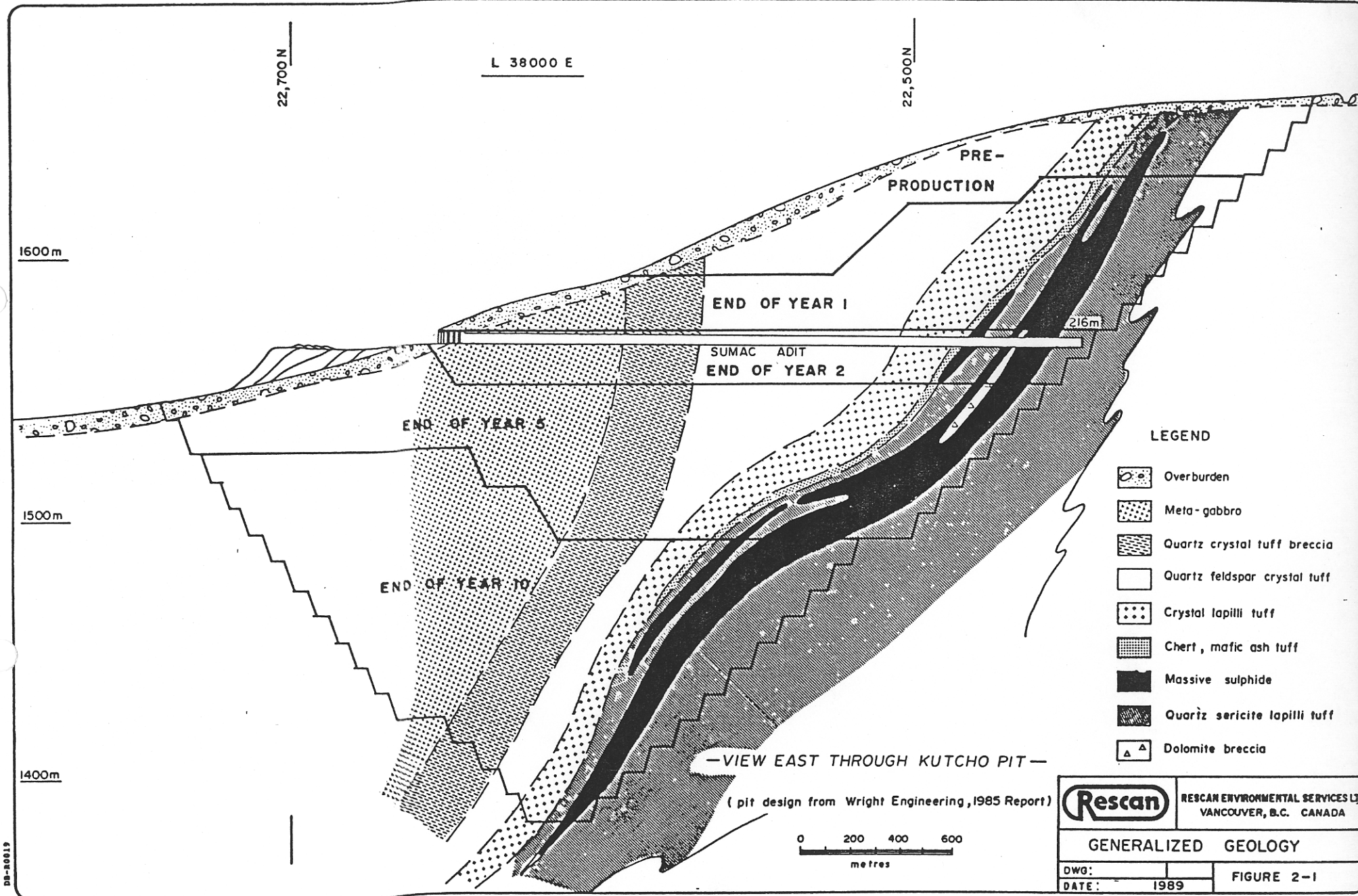
I herewith enclose a copy of a claim map.

Yours sincerely,

*Ryosichi Suzuki*  
R. Suzuki

Encl.

RS:aa



22,700 N

L 3800 E

22,500 N

1600m

1500m

1400m

END OF YEAR 1

SUMAC ADIT

END OF YEAR 2

216m

END OF YEAR 5

END OF YEAR 10

LEGEND

- Overburden
- Meta-gabbro
- Quartz crystal tuff breccia
- Quartz feldspar crystal tuff
- Crystal lapilli tuff
- Chert, mafic ash tuff
- Massive sulphide
- Quartz sericite lapilli tuff
- Dolomite breccia

—VIEW EAST THROUGH KUTCHO PIT—

(pit design from Wright Engineering, 1985 Report)



RESCAN ENVIRONMENTAL SERVICES LTD  
VANCOUVER, B.C. CANADA

GENERALIZED GEOLOGY

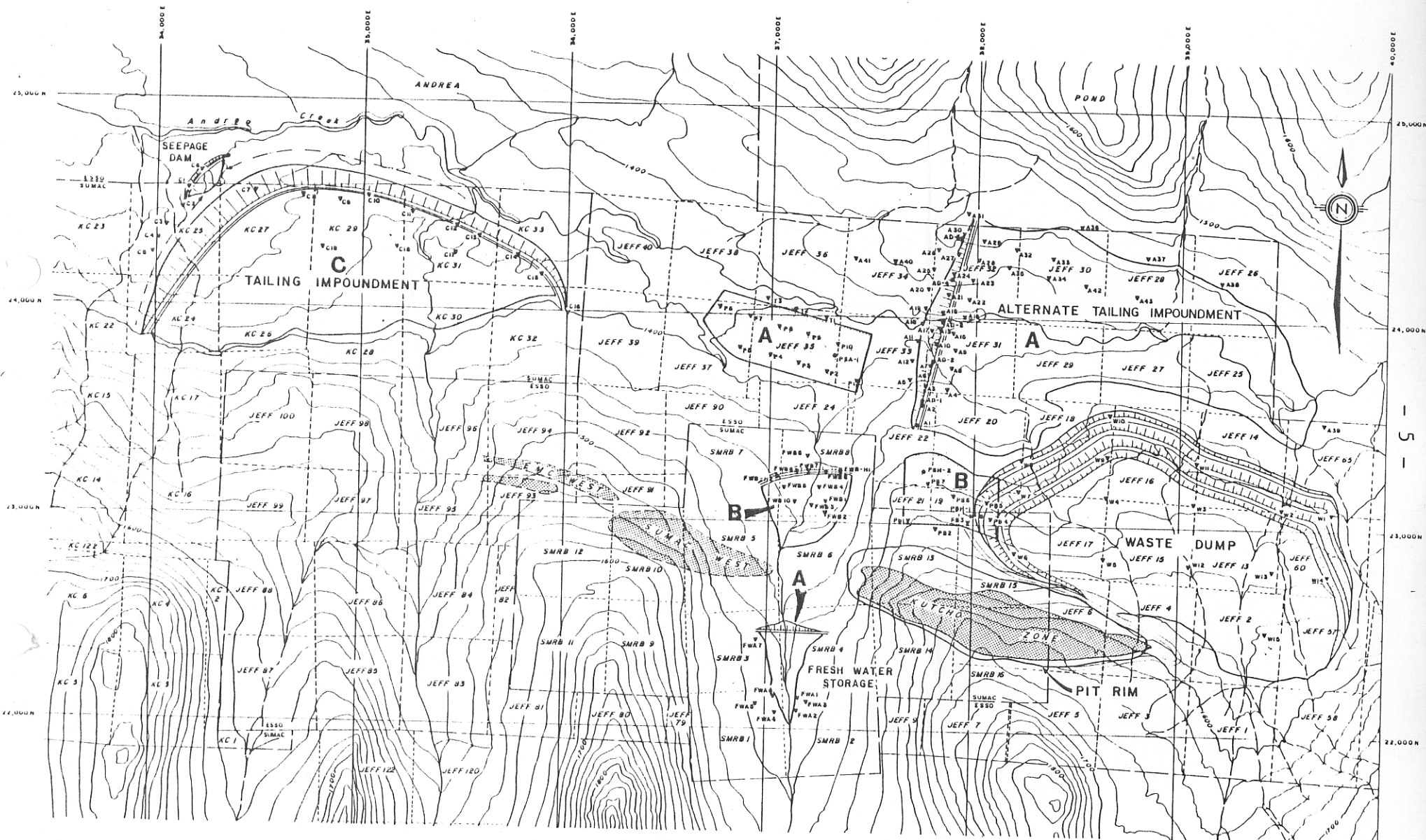
DWG:

DATE:

1989

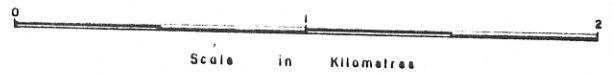
FIGURE 2-1

DB-00019



- Drill collar location
- ▼ Test pit location
- Boundary between Sumac and Esso claims
- - - Internal claim boundaries

KUTCHO CREEK PROJECT  
 1984 SOILS ENGINEERING PROGRAM  
**GENERAL SITE ARRANGEMENT**



- 5 -