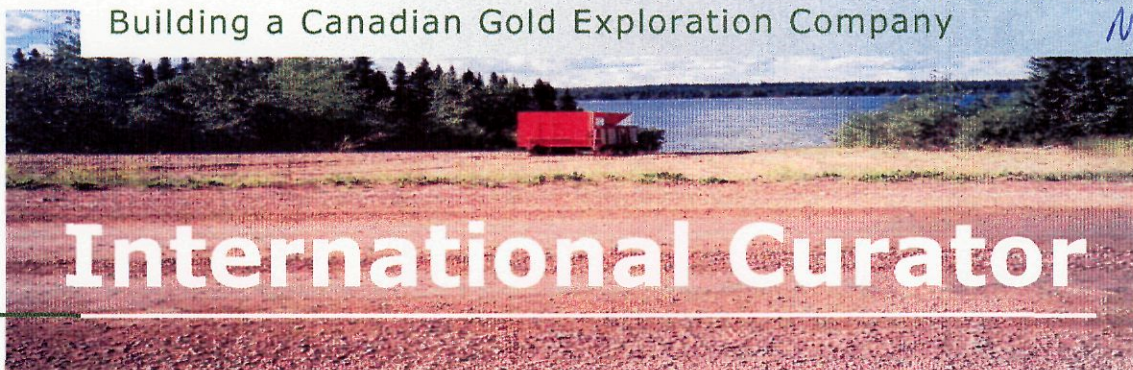


884607

Tom Schwartz  
Nov. 6/03

October, 2003

IC - TSX



→ Kinaskan

## Focus on Canadian Gold

Part of the Lundin Group of companies.

Lundin-Netolitzky team to explore for Canadian gold.

Professional management with +70 years of combined exploration experience.

Four active gold projects in Canada (post takeover):

- Assean Lake Project in Manitoba - shear hosted gold and gold in sulphide iron formation targets
- Kinaskan, Bob Creek and QCM in British Columbia - high grade gold veins, bulk gold rich copper porphyries, bulk gold/silver/zinc targets

Actively evaluating other gold opportunities in Canada and abroad.

**Mission:** Build Curator into one of Canada's leading gold exploration companies.

### International Curator

IC - TSX

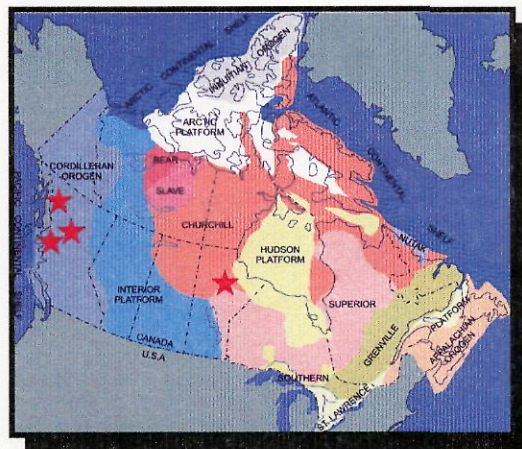
160 million shares o/s  
(33 million post roll back)

#### Management:

Lukas H. Lundin, Chair.  
 Richard J. Bailes, Pres.  
 Adolf H. Lundin, Dir.  
 Michael McInnis, Dir.  
 William A. Rand, Dir.  
 John H. Craig, Dir.  
 Jan Christoffersen, V.P.  
 Ron Netolitzky, Dir.  
 Mike Halvorson, Dir.

Name change soon to:

**Canadian Gold Hunter Corp.**



## Gold Prospect Inventory

- Four gold properties.
- 3 projects in B.C. (Kinaskhan, Bob Creek, QCM) and 1 in Manitoba (Assean Lake).
- High grade gold vein and bulk gold rich porphyry targets.

### High Grade Veins with Drill Intercepts

<u>Property</u>	<u>Zone</u>	<u>Highlight</u>
Assean Lake	1. Hunt	12.51 g/t Au/4.4 m
	2. Blowfish Lake	5.69 g/t Au/6.20 m
	3. Lindal	6.70 g/t Au/1.0 m
	4. Dunbrack	15.70 g/t Au/0.67 m
Kinaskhan	5. Gordon Vein	19.9 g/t Au/3.5 m
	6. Horn Silver	23.0 g/t Au/1.0 m
	7. Trevor Peak	18 g/t Au/1.5 m
Bob Creek	8. South	23.7 g/t Au/3.0 m
	9. Canyon	12.68 g/t Au/3.05 m

### Bulk Tonnage Prospects

Kinaskhan	1. GJ	1.9 g/t Au, 0.70% Cu/68 m
	2. QC	0.28% Cu/69 m
QCM	3. QCM	1.31 g/t Au/41.2 m
Bob Creek	4. 13 Zone	3.25 g/t Au, 30.89 g/t Ag/21.75 m
	5. Canyon	0.79 g/t Au, 5.40 g/t Ag/156.10 m

## Kinaskan Gold/Copper Project - B.C.

- Over 16 Minfile occurrences on the claims.
- Extremely anomalous in copper and gold in silts.
- Well located near the Stewart Cassiar Highway
- Jurassic/Triassic volcanics

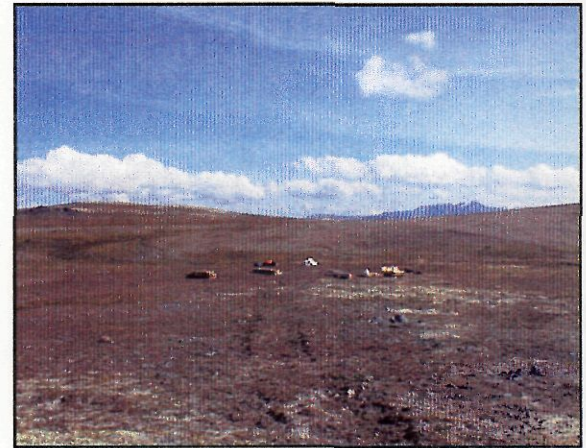
- host to high grade gold mines such as:

Eskay Creek - 2.7 million tonnes grading 43 g/t Au and 1,909 g/t Ag  
 Snip - 1.1 million tonnes grading 28.5 g/t Au

- and bulk tonnage gold-rich porphyries such as:

Galore Creek - 284 million tonnes grades 0.35 g/t Au, 0.67% Cu containing over 3.2 million ounces gold  
 Red Chris - 500 million tonnes grading 0.25 g/t Au, 0.32% Cu containing over 4 million ounces gold

- Claim package covers 28,000 hectares (20 km x 14 km) held in the late 1980's by Falconbridge, Noranda, Teck, Tenajon, Silver Standard, Ascot, Dryden and Curator. Now all owned 100% by Curator.



2003 IP Grid Area

### Kinaskan Highlights

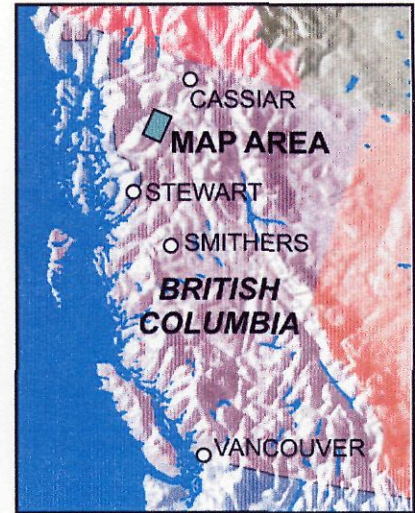
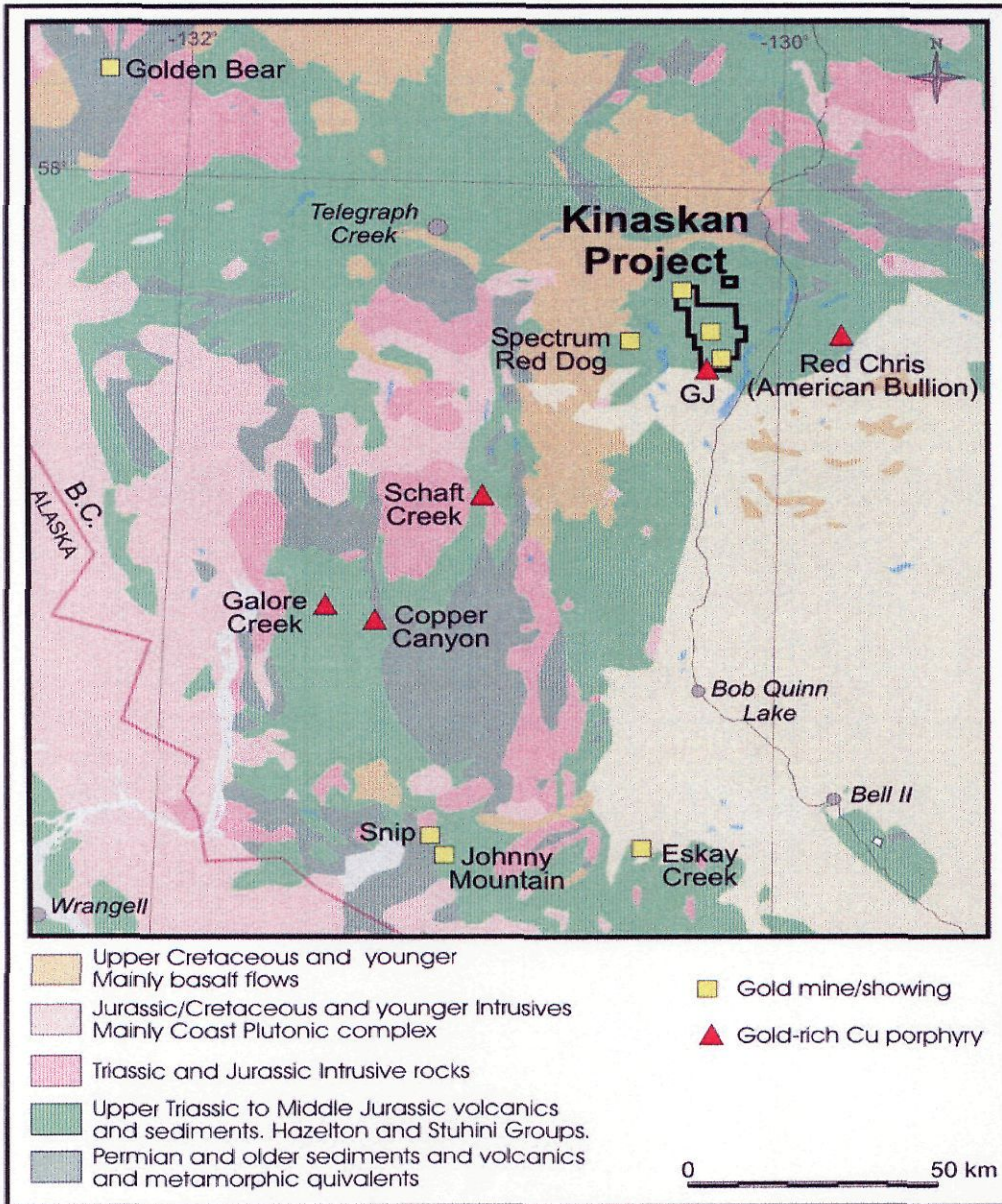
#### Gold Veins

- |                              |  |
|------------------------------|--|
| 1. Gordon Vein               | 19.9 g/t Au over 3.5 m in drill hole 91-4<br>Numerous showings and float boulders high in gold |
| 2. Horn Silver and Horn East | 23 g/t Au over 1 m<br>100 x 1000 m gold soil anomaly<br>Numerous high grade grabs              |
| 3. Trevor Peak               | 3 high grade gold showings<br>18 g/t Au over 1.5 m   |

#### Bulk Gold-rich Porphyries

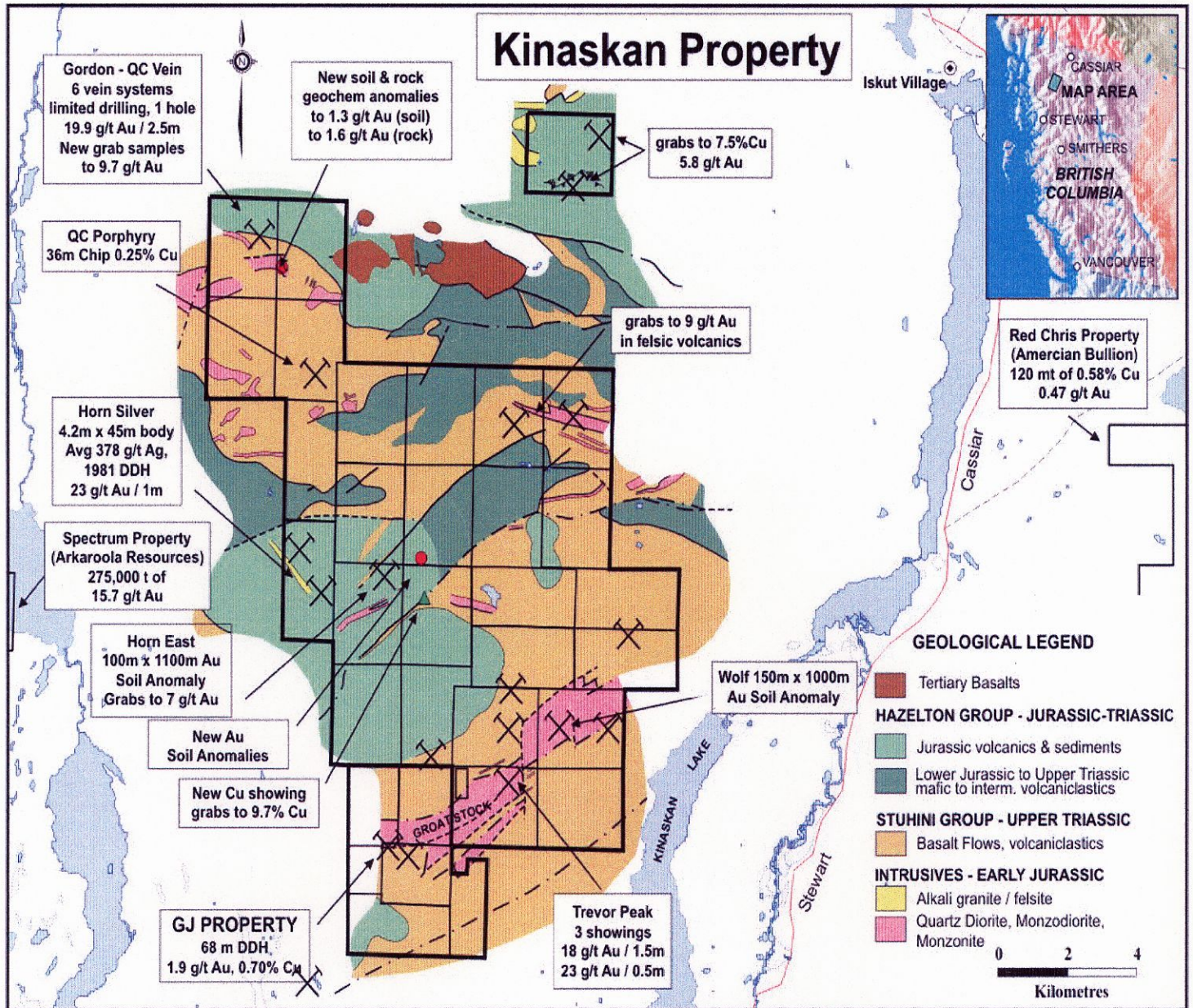
- |                |  |
|----------------|--|
| 1. GJ          | 68 m grading 1.9 g/t Au, 0.70% Cu                      |
| 2. Quash Creek | 69 m grading 0.28% Cu<br>High grade gold veins as well |

# Kinaskan Gold/Copper Project - B.C.



Blowdown Northend of Kinaskan

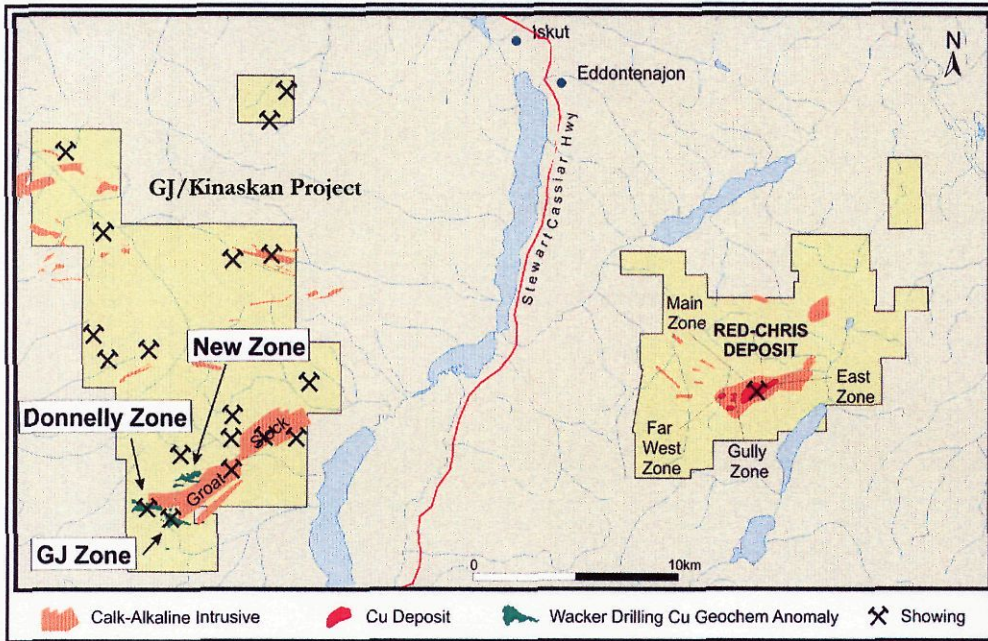
## Kinaskan Gold/Copper Project - B.C.



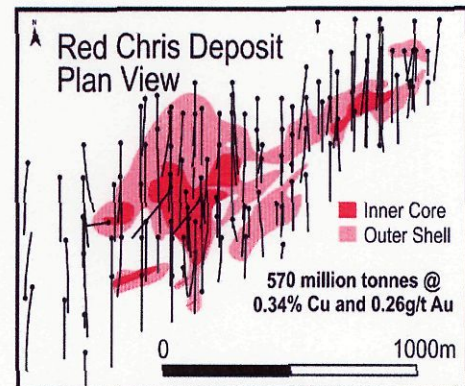
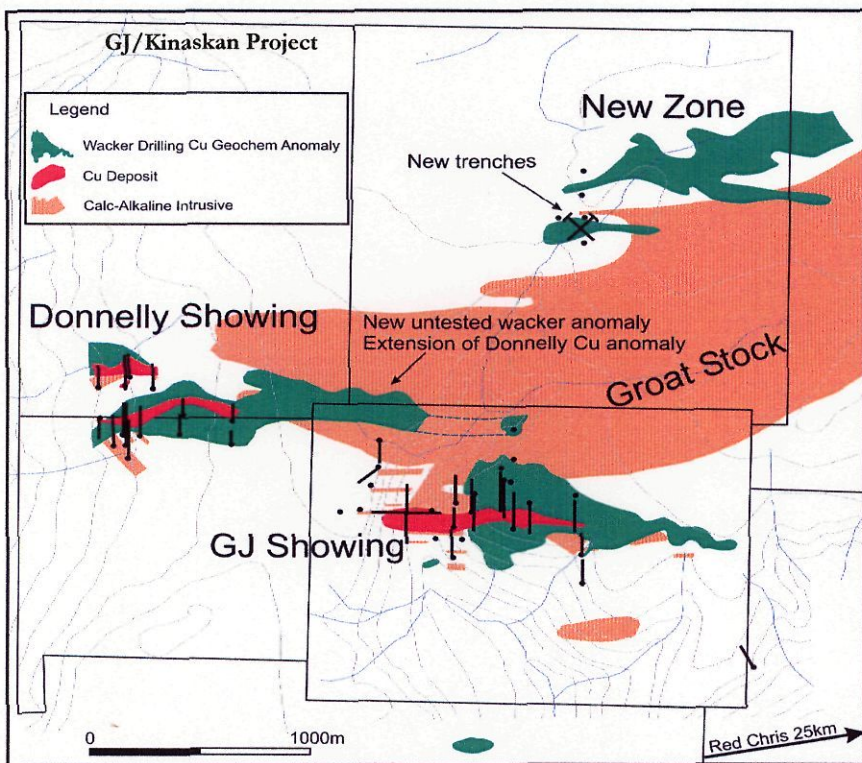
### 2003 Summer Work Program

- 18 km IP/Mag survey - new 1,100 m long IP anomaly
- Overburden sampling/drilling - new 1,500 m Cu/Au geochem anomaly coincident with IP + 700 m extension of previously discovered zone
- Trench sampling - 80.5 m grading 0.27% Cu, 0.31 g/t Au
- Reconnaissance geochem/prospecting
- Airborne mag survey
- New drill targets generated - drilling in spring 2004

# Kinaskan Gold/Copper Project - B.C.



Wacker Drilling



Comparison of the areal extents of the GJ copper anomalies and Red Chris

Note the contrast of drill hole density between the Red Chris deposit and the geochemical anomalies at GJ.