

1046033

884604

Kinaskan

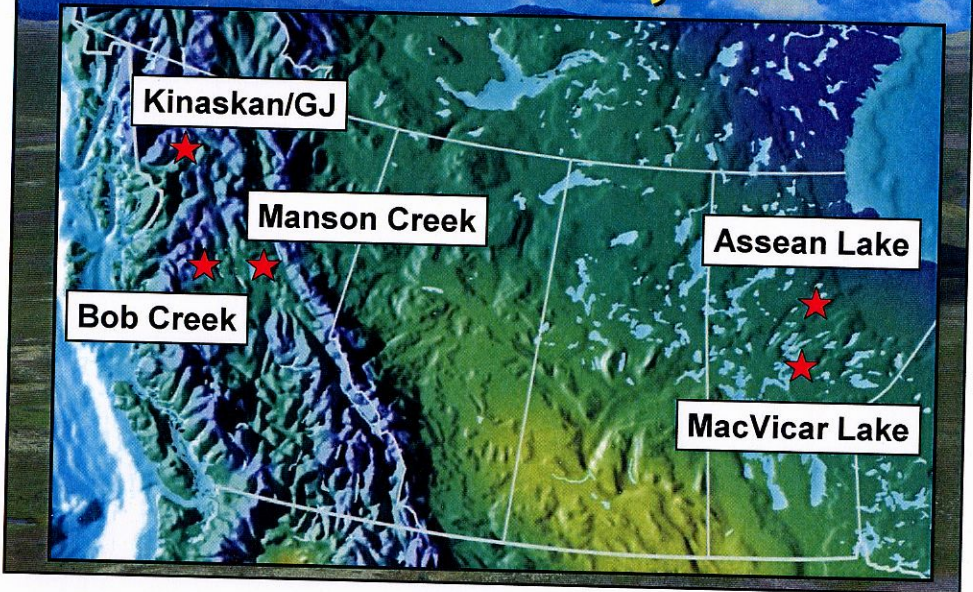
1046198

→ Kinaskan

Tom Schreeta
June 13/05
(Van. Inv. Conf.)

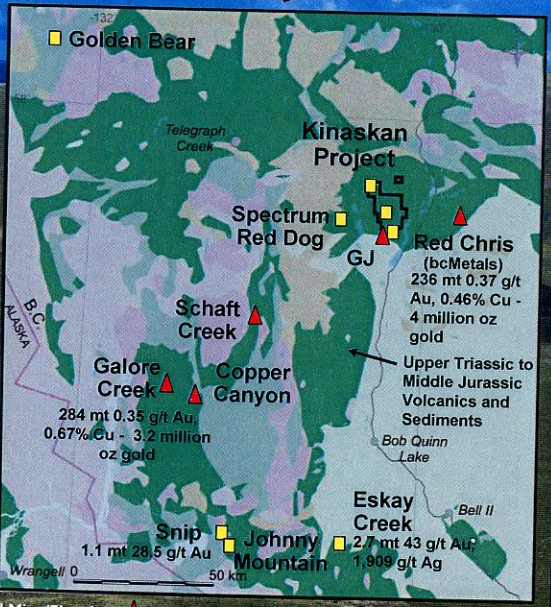


Five Gold Projects



GJ/Kinaskan Project

Prime
Exploration
Country



■ Gold Mine/Showing ▲ Gold Rich Copper Porphyry



GJ/Kinaskan - Disjointed Ownership in Past

Claimholders in 1990:

- ▶ **Falconbridge, Noranda, Teck, Silver Standard, Ascot, Intl. Curator, Triumph, Tenajon**

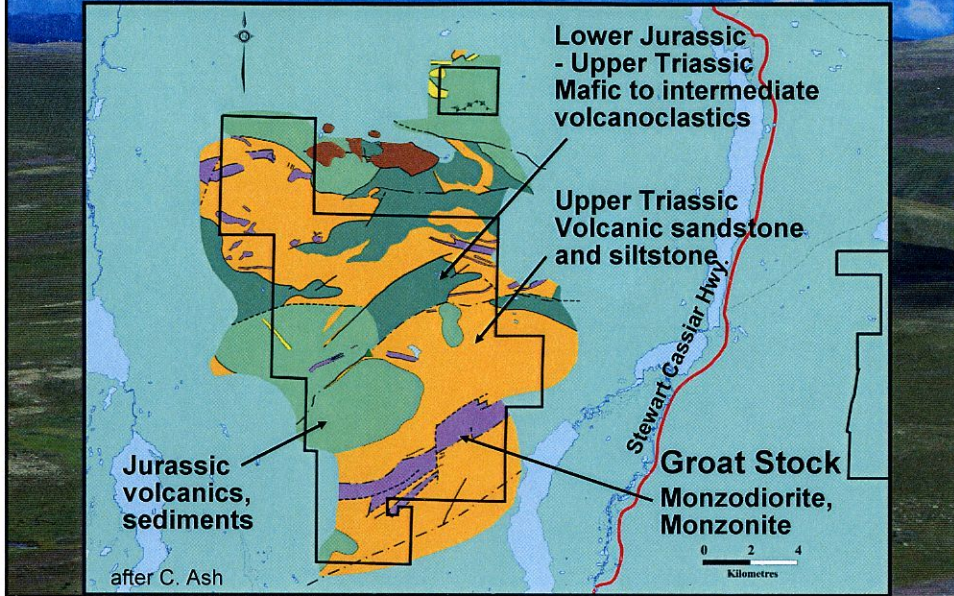
**All these claims are now
owned by CGH**



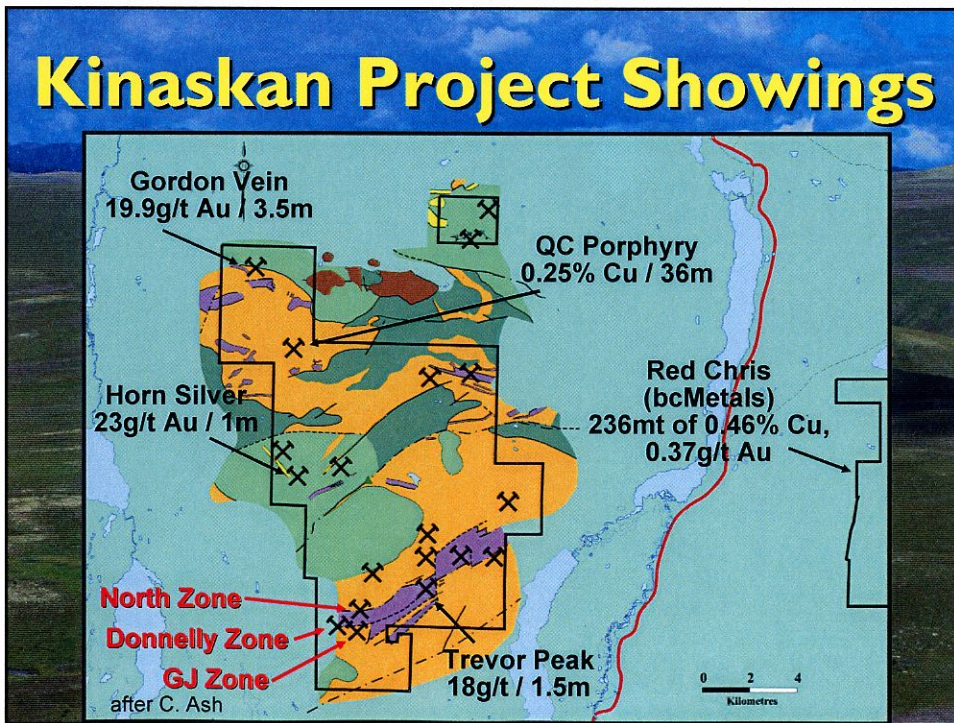
GJ History

- ▶ **1964** Conwest discovered Groat Creek showing
- ▶ **1970-90** Amoco, Texasgulf, Great Plains, Intl. Curator & Ascot drilled 50 holes totaling 10,083 m
- ▶ **1999** Texasgulf claims lapsed – staked by CGH
- ▶ **2003** CGH took over Royal County, unifying entire property under one owner

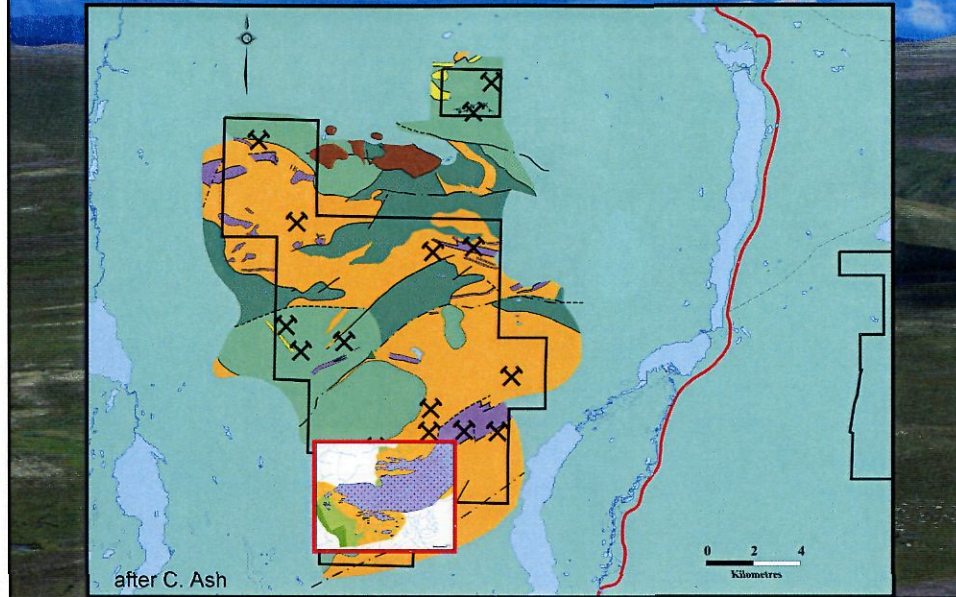
Kinaskan Project Geology



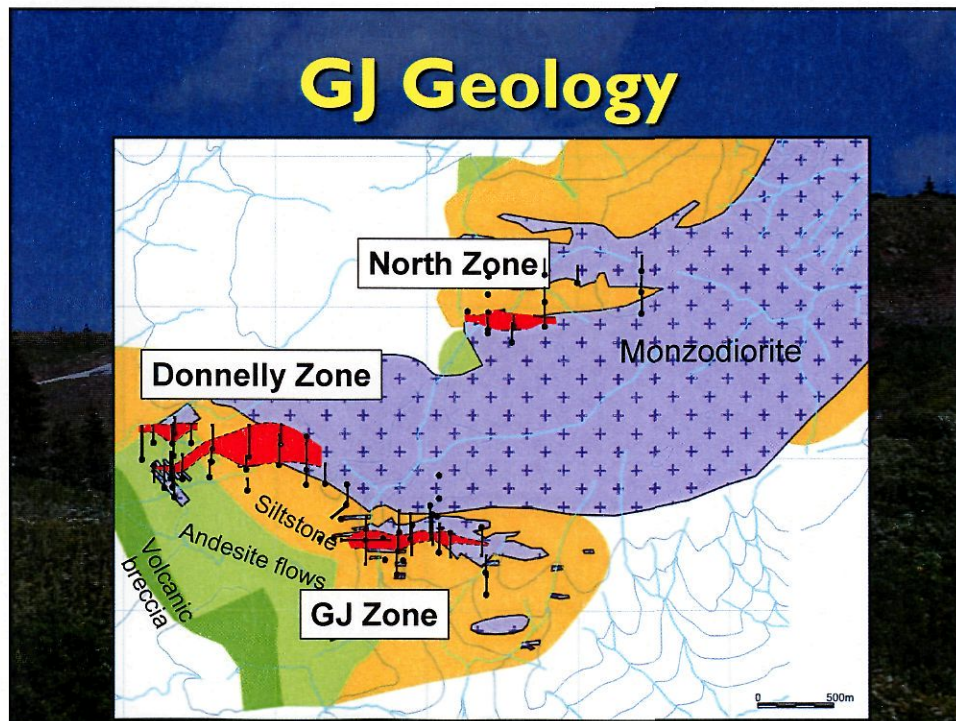
Kinaskan Project Showings

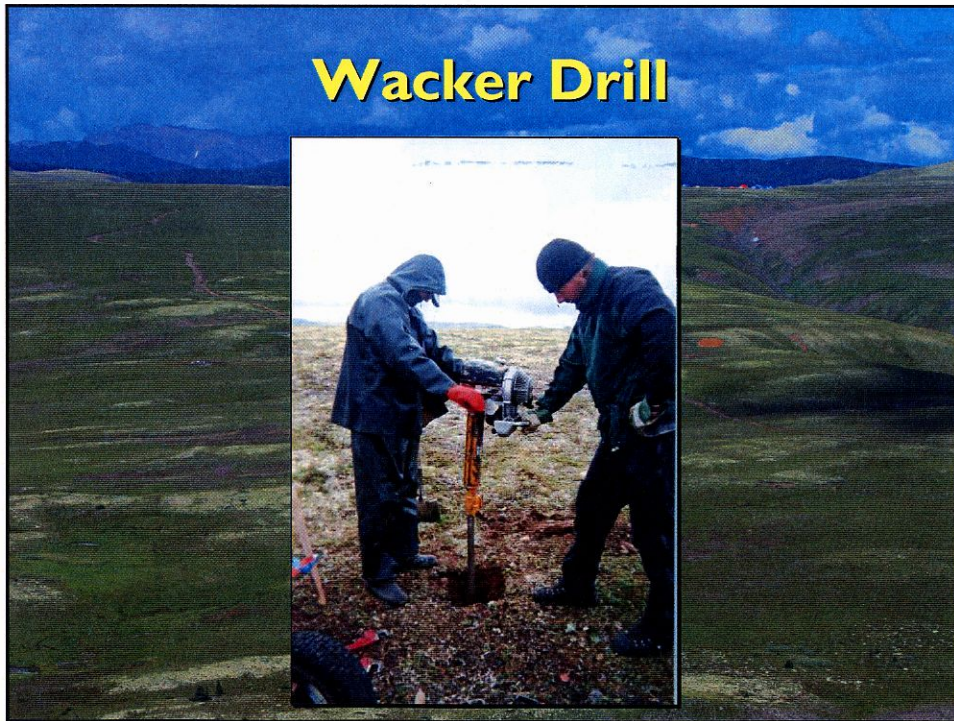
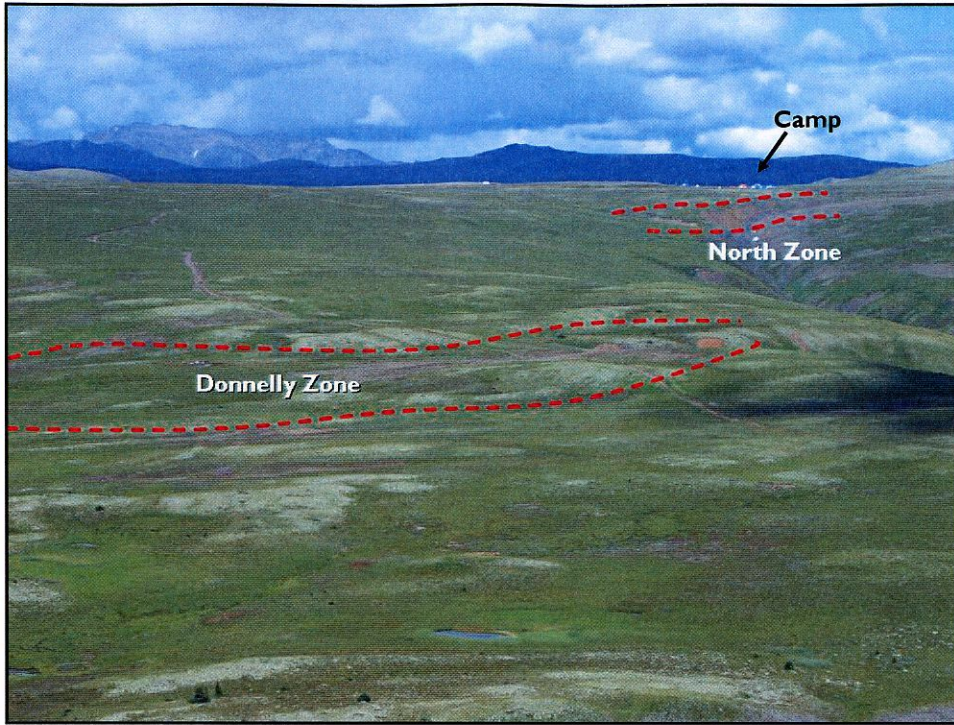


Kinaskan Project Showings

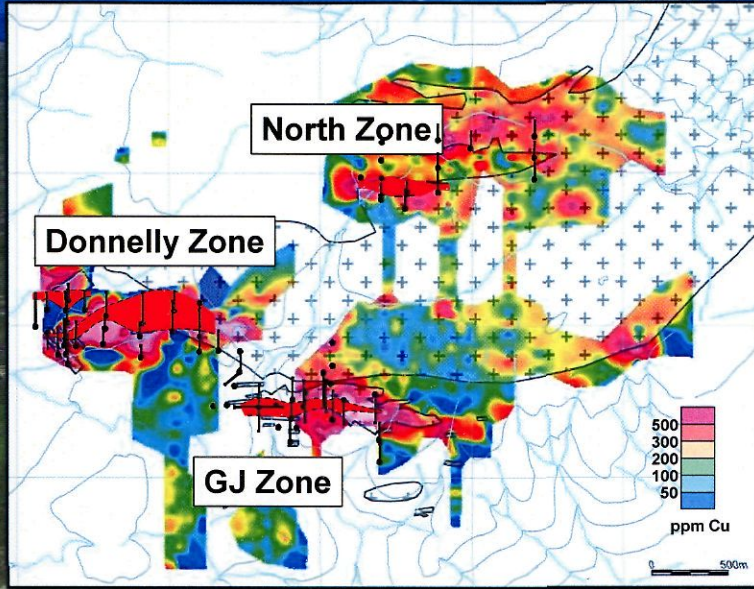


GJ Geology

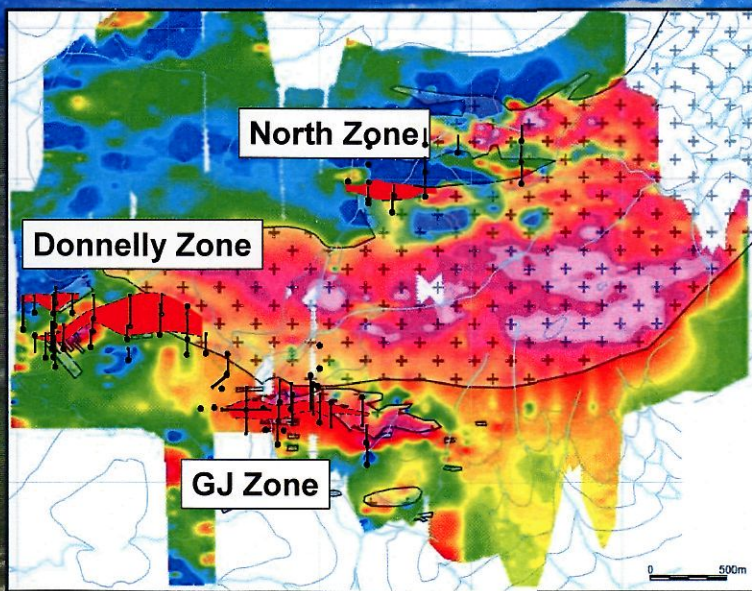




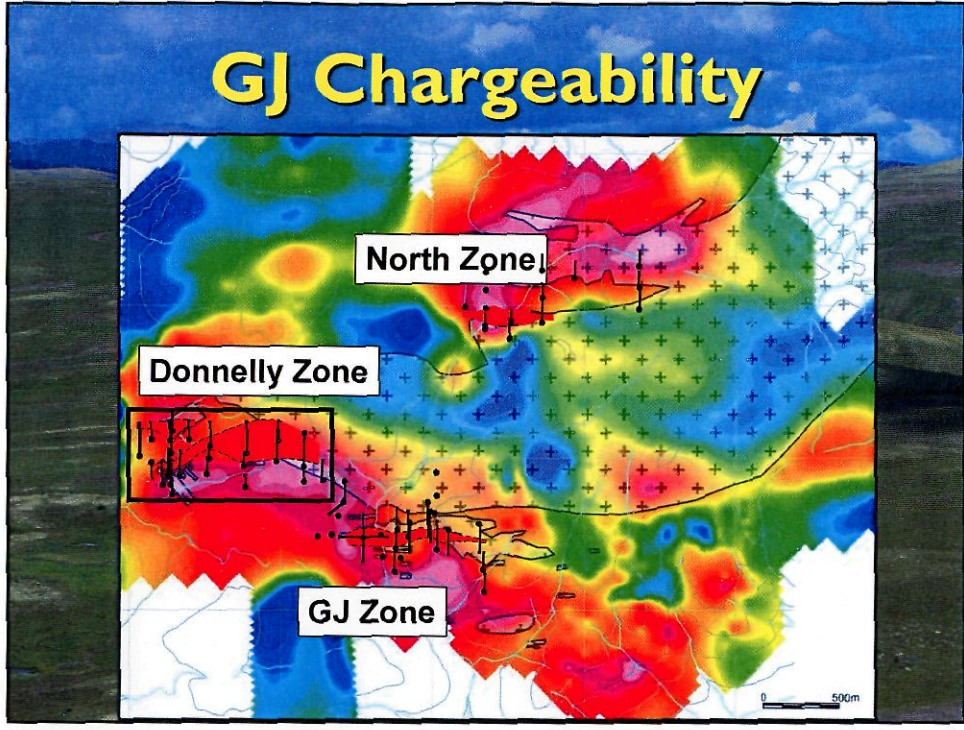
GJ Basal Cu Wacker



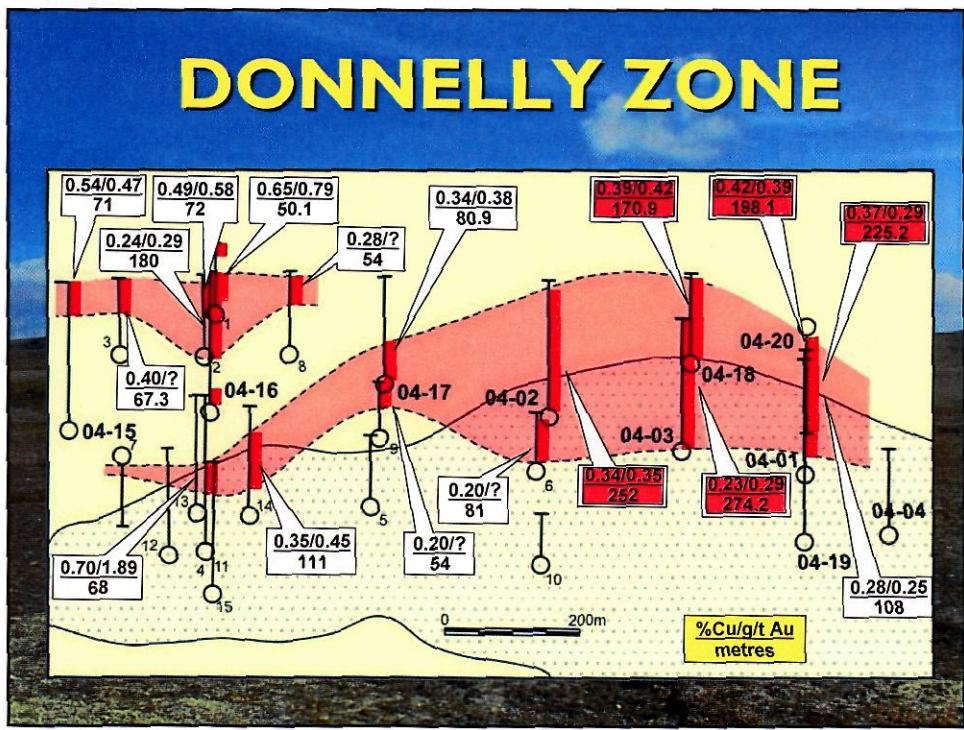
GJ T.F. Magnetics



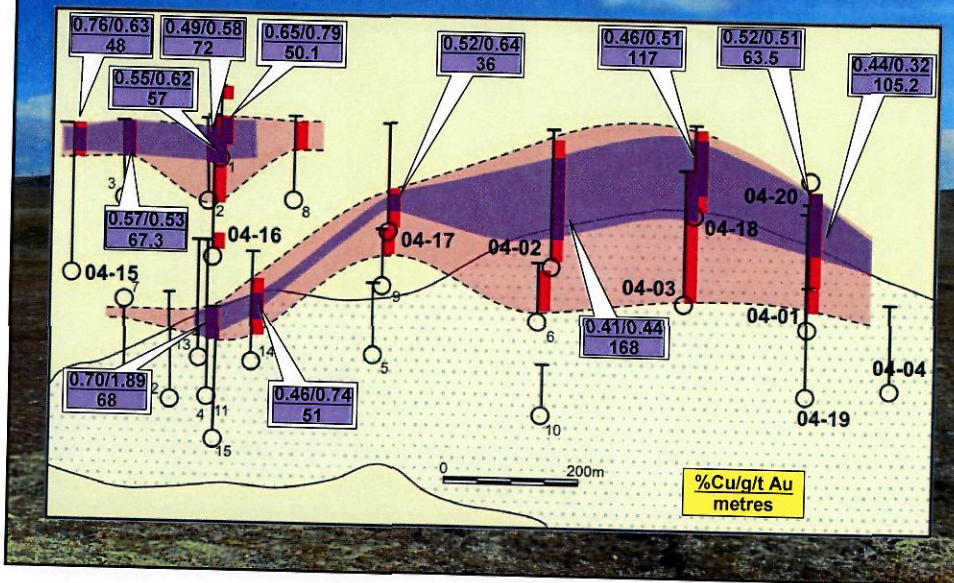
GJ Chargeability



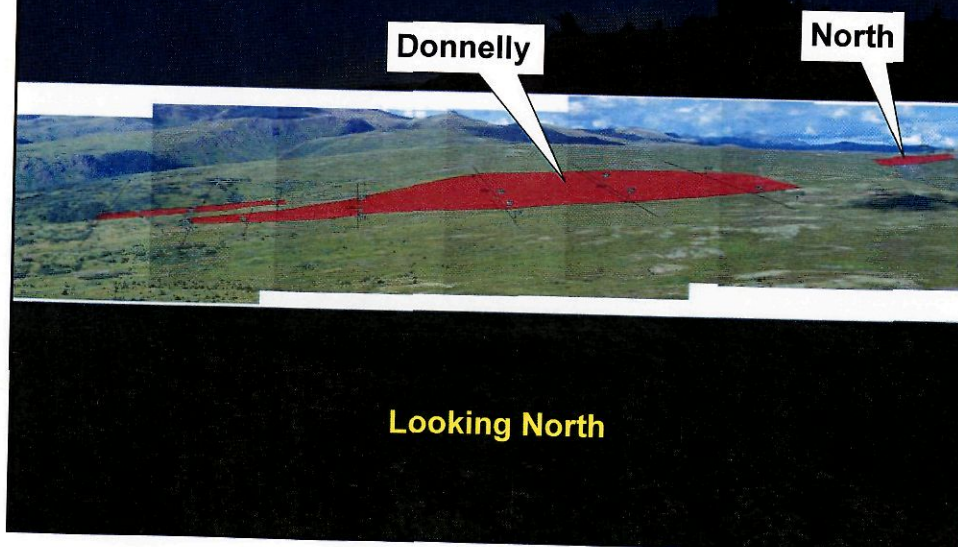
DONNELLY ZONE



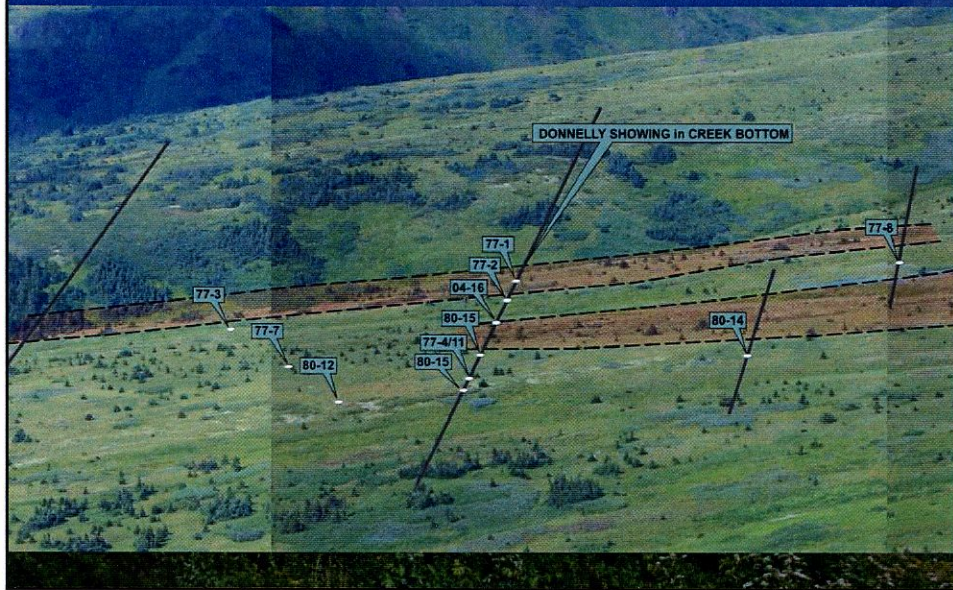
HIGHER GRADE CORE



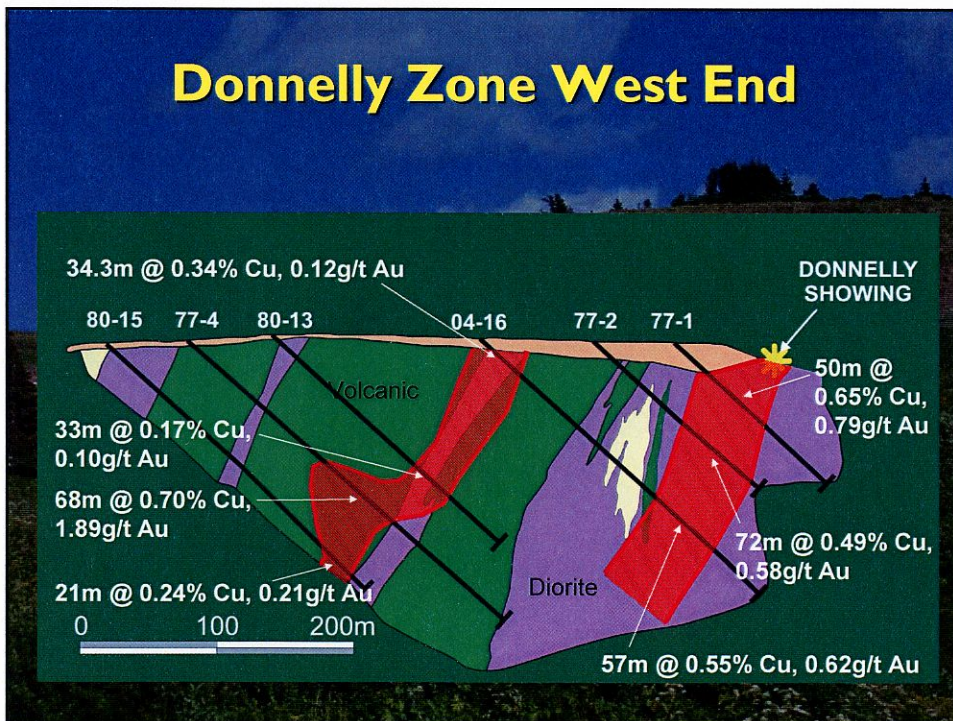
Donnelly and North Zones

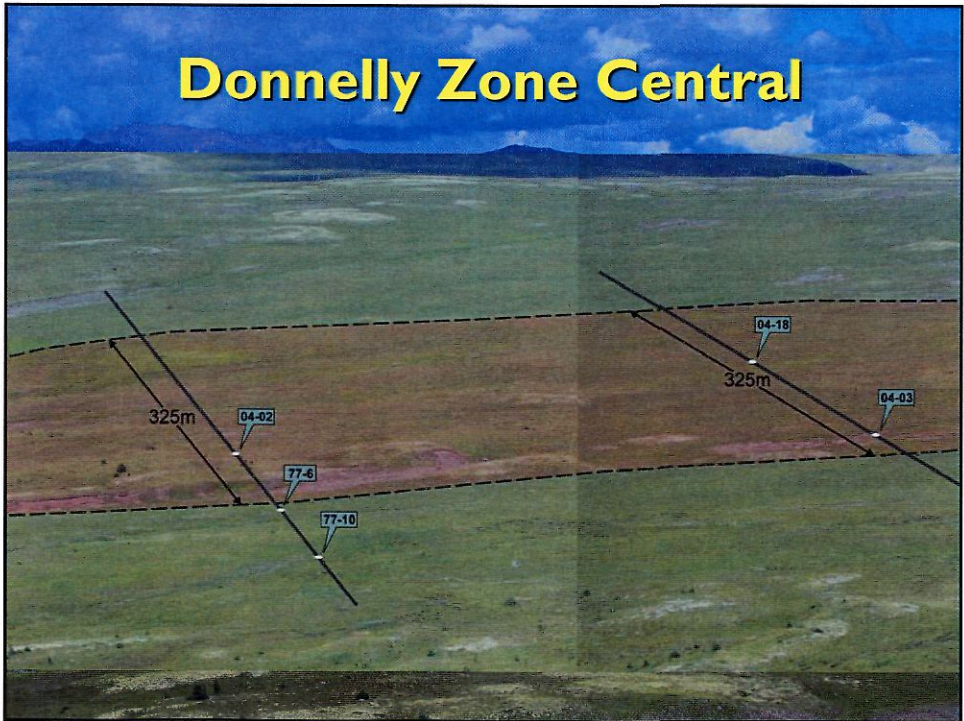
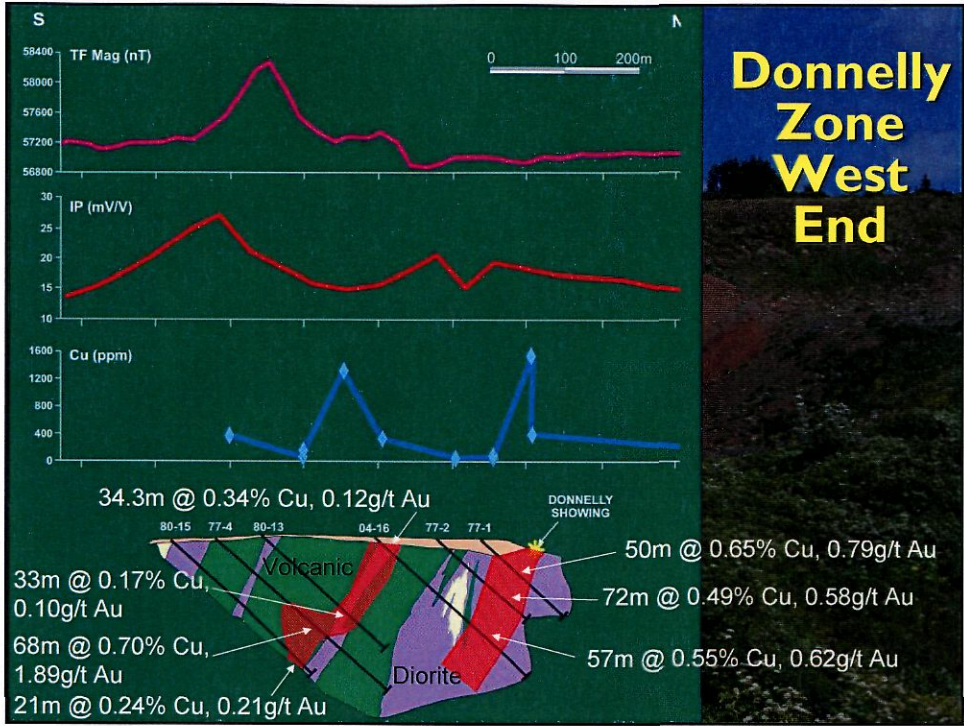


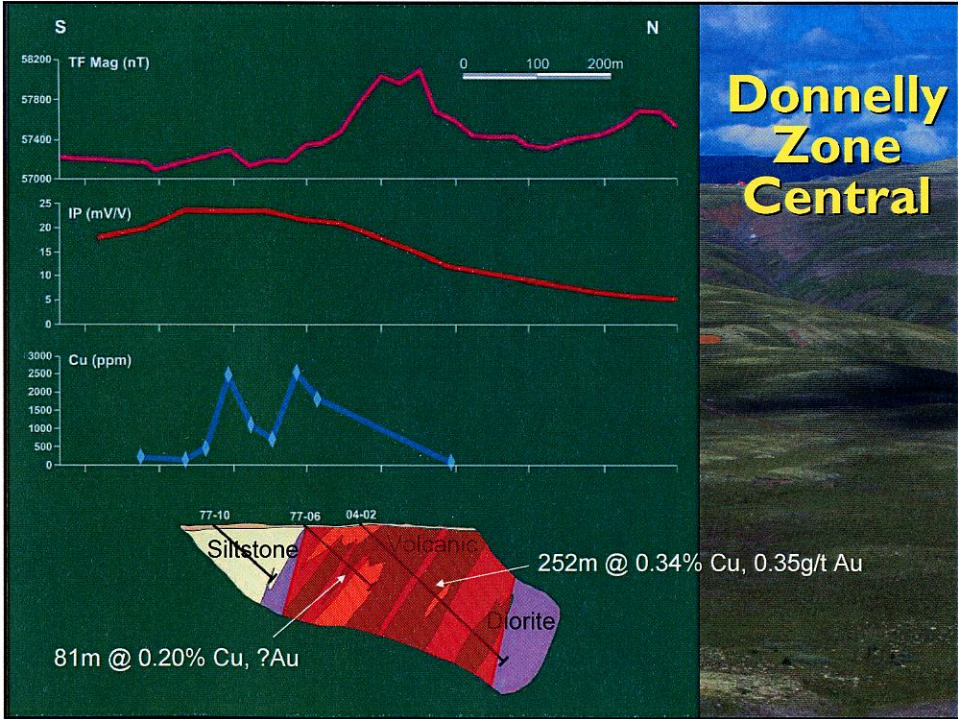
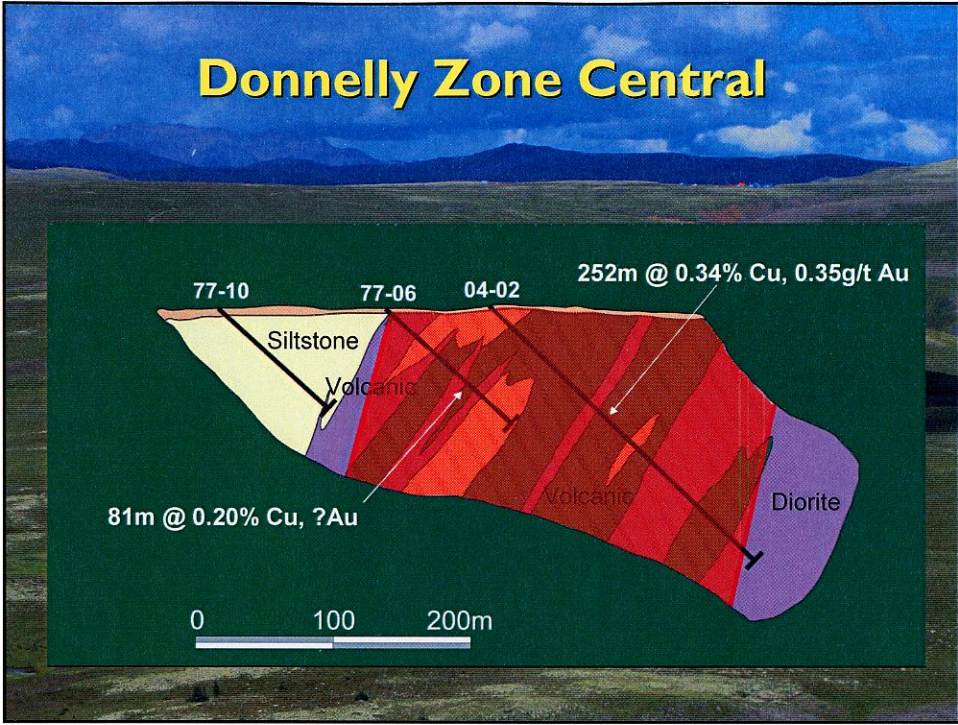
Donnelly Zone West End



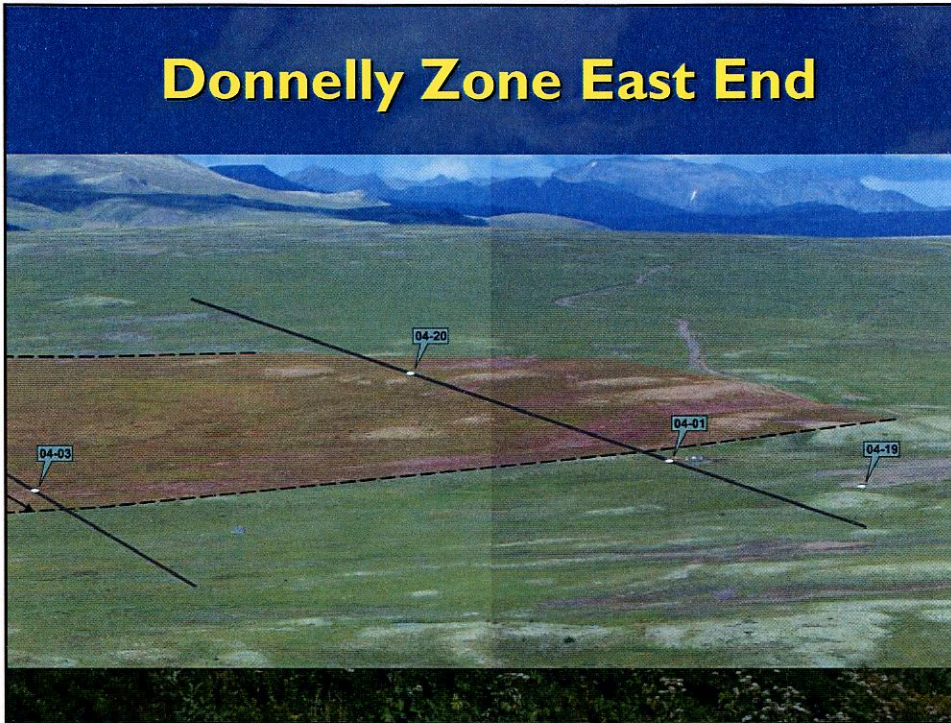
Donnelly Zone West End



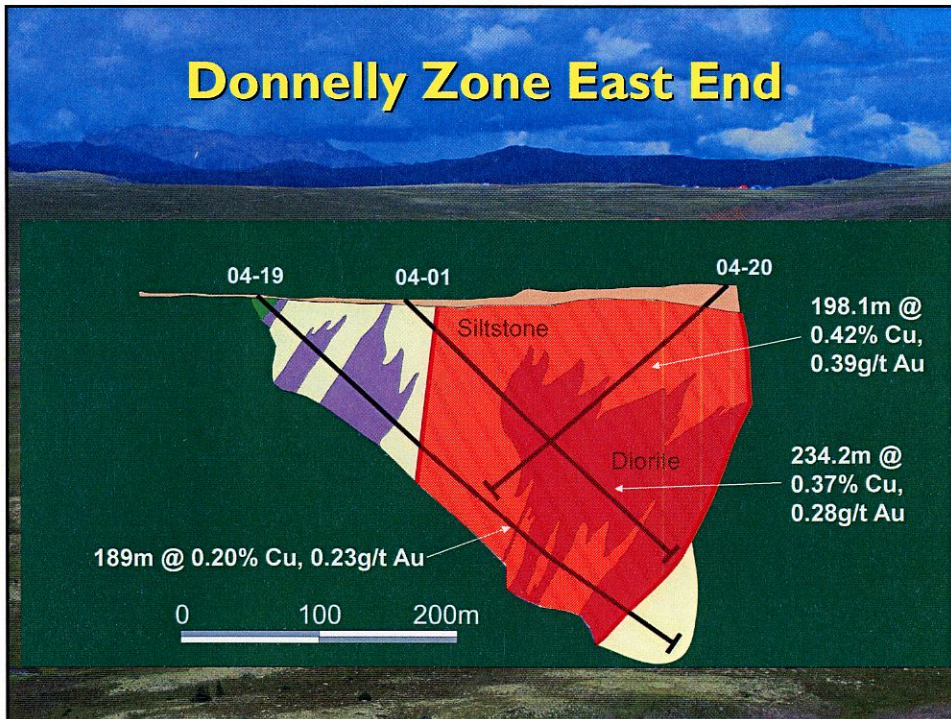


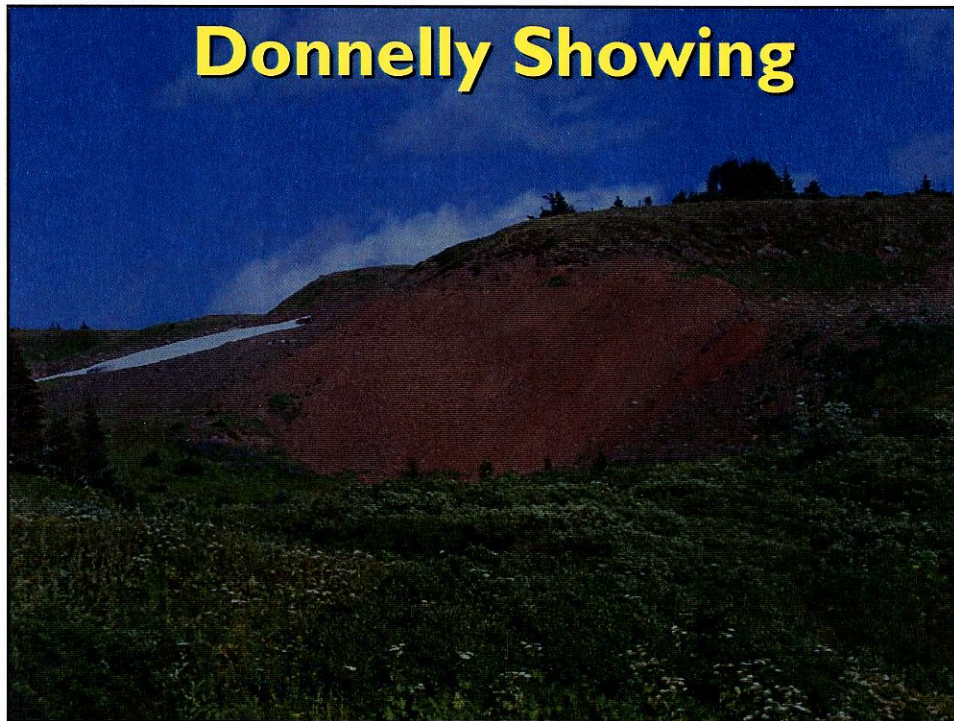
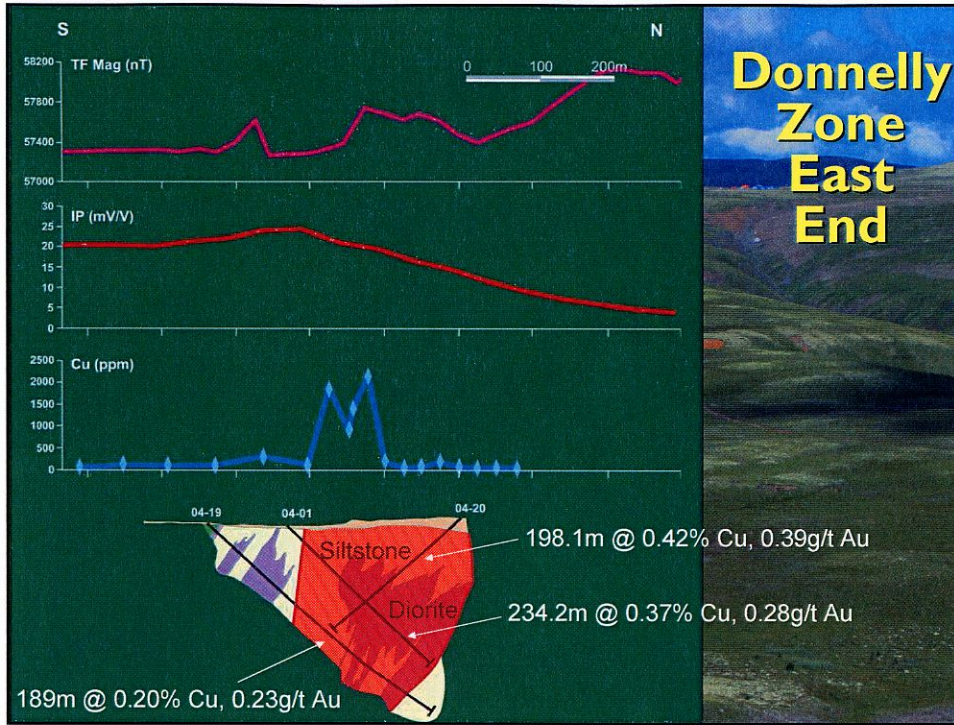


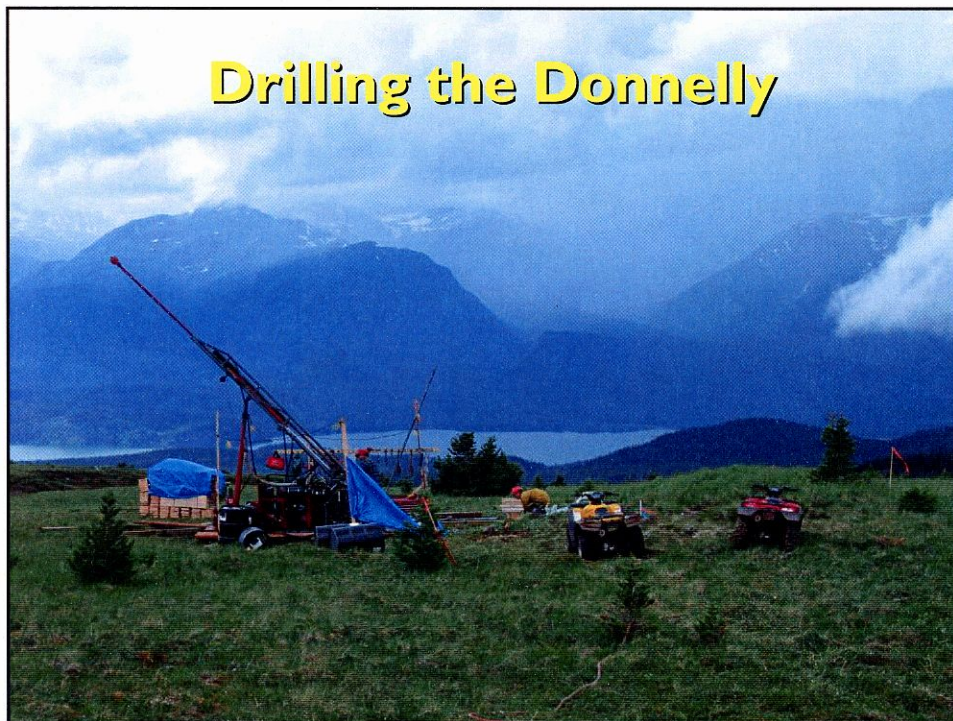
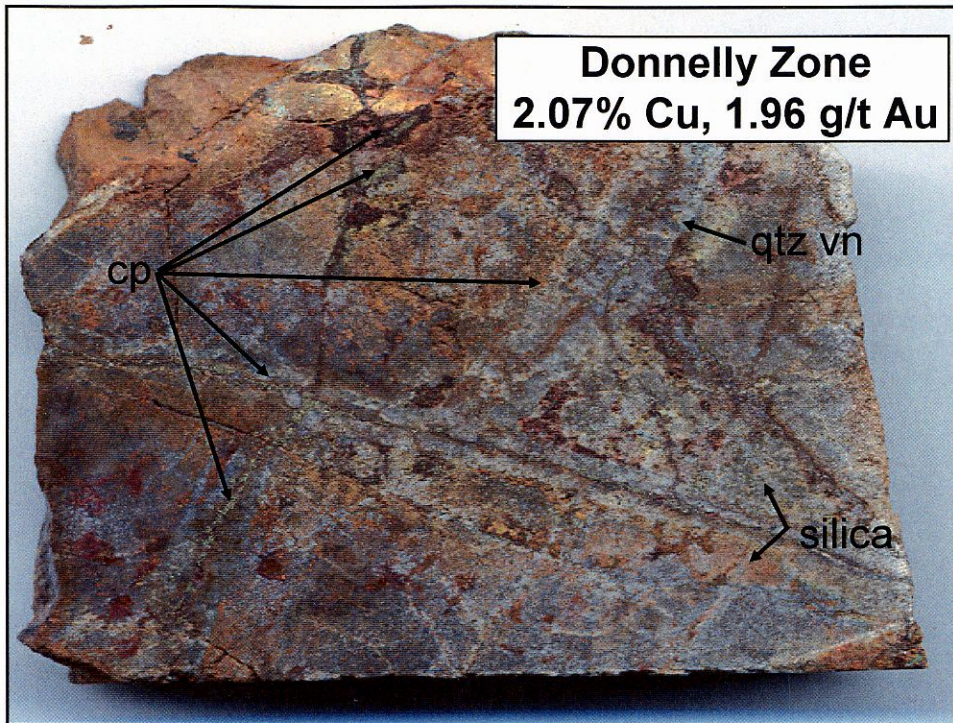
Donnelly Zone East End



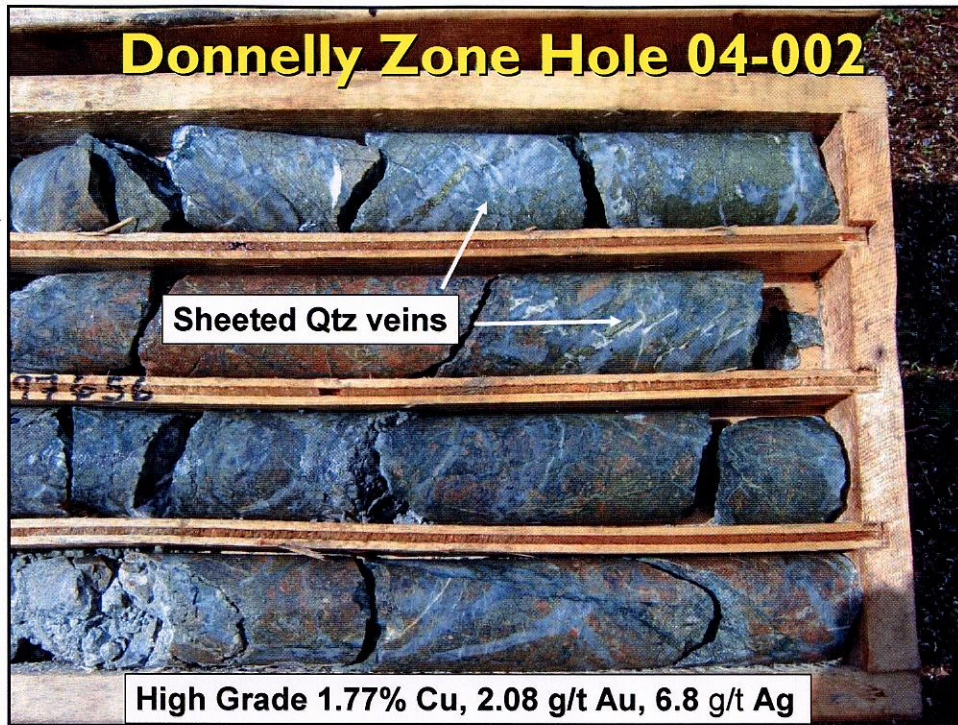
Donnelly Zone East End

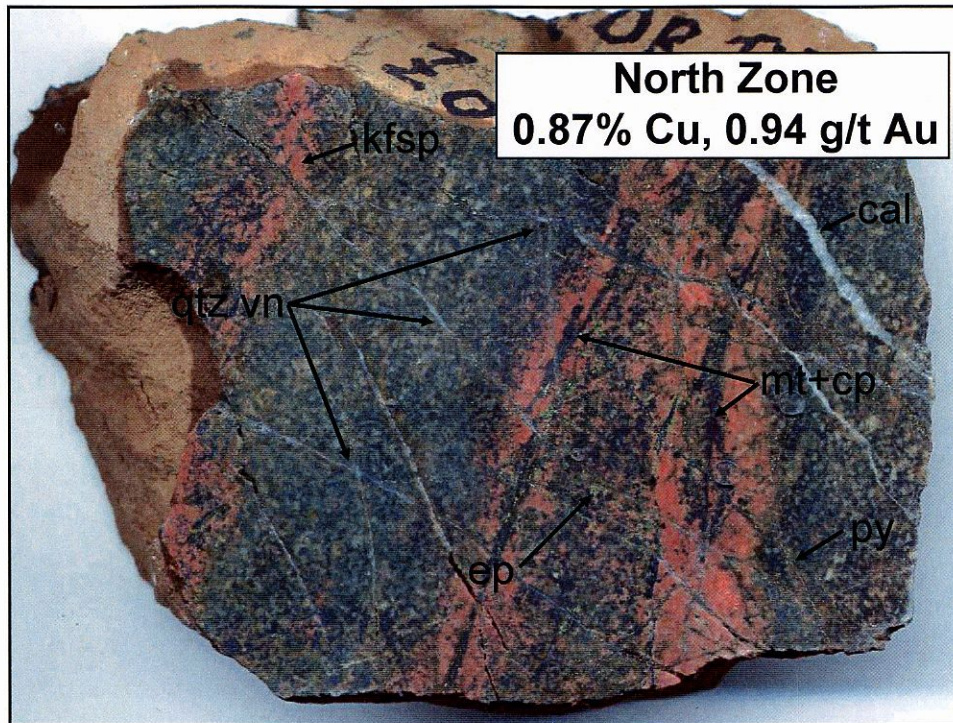








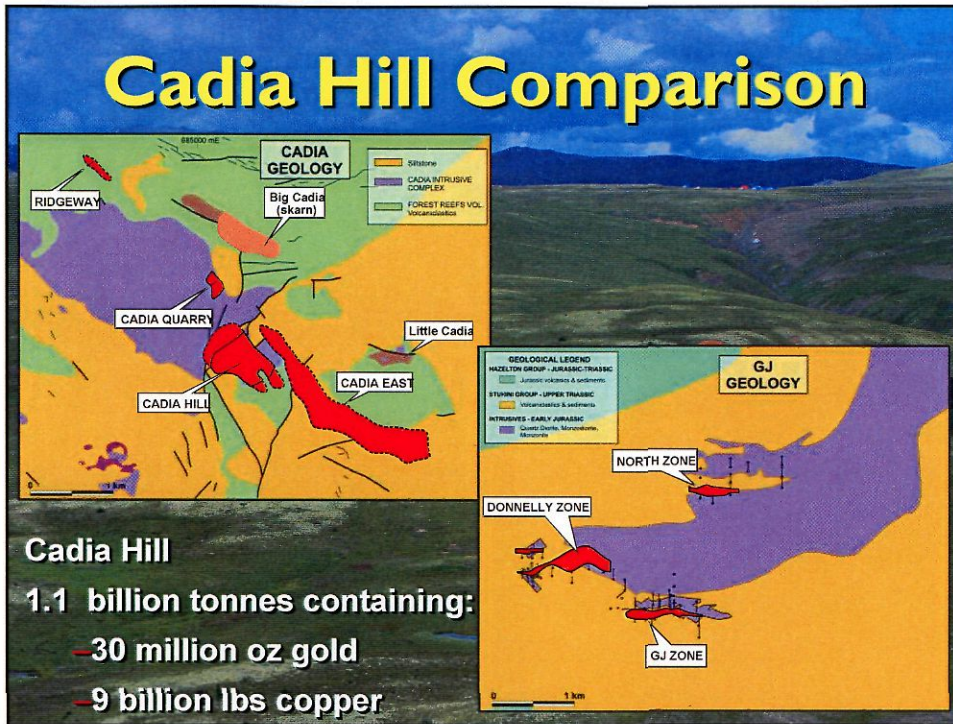




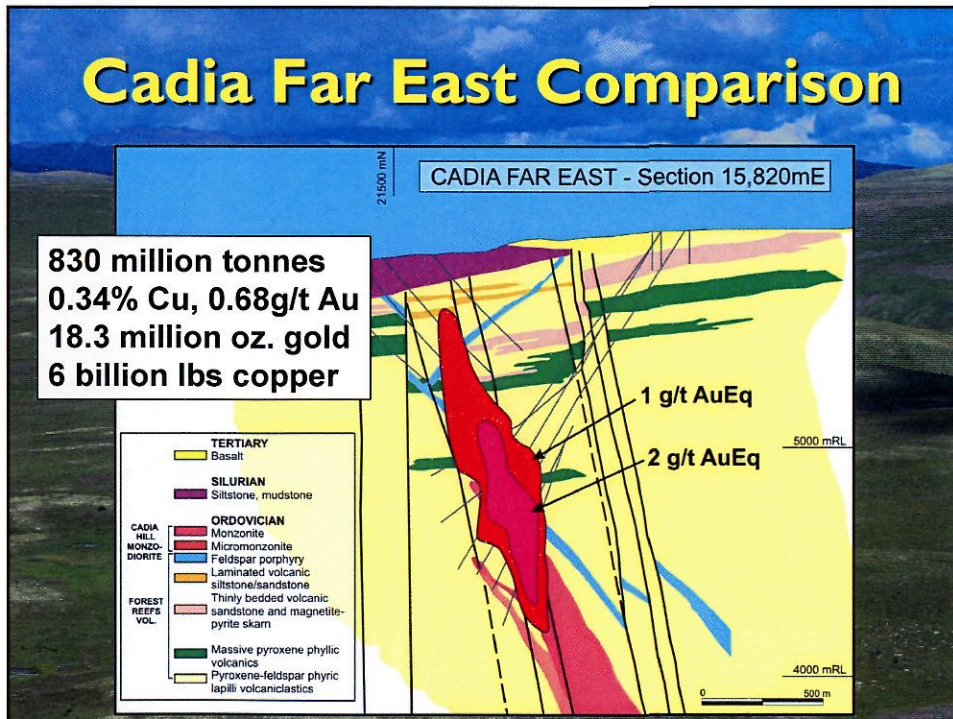
Gold-Rich Copper Porphyries

- ▶ Alkalic to calc-alkalic affinities
- ▶ Structurally controlled (elongate systems)
- ▶ Great depth extent
- ▶ High-grade cores (root systems)
- ▶ Transitional between classic concentrically zoned porphyries and copper-gold skarns
- ▶ B.C. examples
 - Galore Creek, Afton, Mount Polley, Kemess, Red Chris
- ▶ World examples
 - Oyu Tolgoi, Cadia Hill

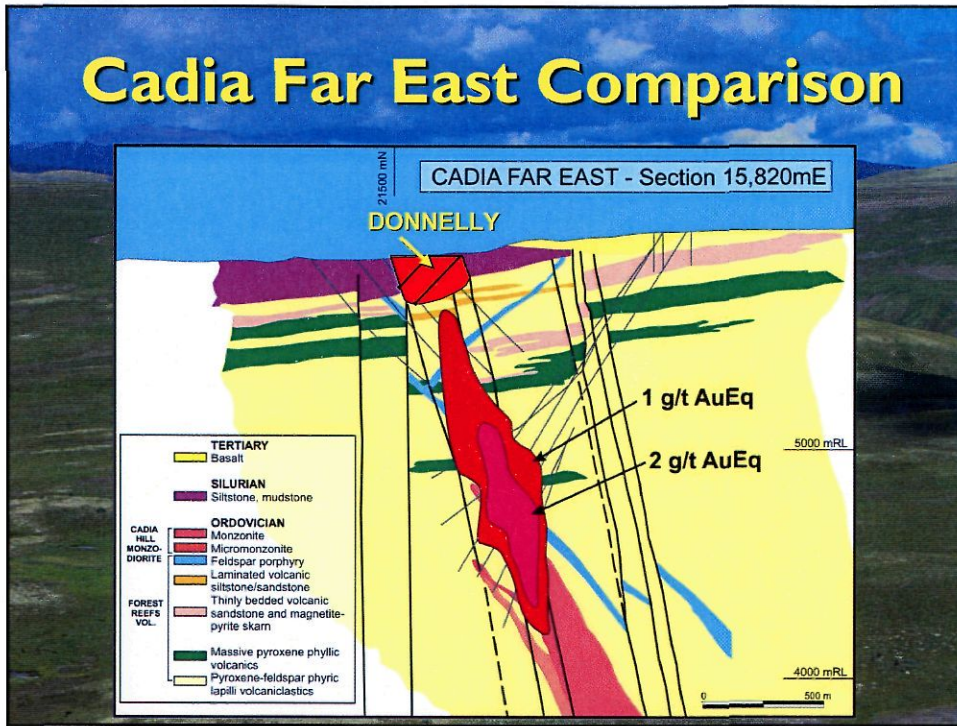
Cadia Hill Comparison



Cadia Far East Comparison



Cadia Far East Comparison



Donnelly Resource Estimate

Donnelly Inferred Resources (43-101)

Cu Cutoff	Tonnes x 1 million	Cu %	Au g/t	Gross Metal Value/t	Contained Cu Million lbs	Contained Au Million oz	Contained \$US Billions
0.10%	105.1	0.32	0.32	12.94	740	1.09	1.36
0.20%	71.2	0.40	0.40	16.04	623	0.91	1.14
0.30%	41.5	0.50	0.52	20.46	458	0.69	0.85
0.40%	24.5	0.61	0.67	25.29	330	0.52	0.62

Donnelly Resource Estimate

Donnelly Inferred Resources (43-101)

Cu Cutoff	Tonnes x 1 million	Cu %	Au g/t	Gross Metal Value/t	Contained Cu Million lbs	Contained Au Million oz	Contained \$US Billions
0.10%	105.1	0.32	0.32	12.94	740	1.09	1.36
0.20%	71.2	0.40	0.40	16.04	623	0.91	1.14
0.30%	41.5	0.50	0.52	20.46	458	0.69	0.85
0.40%	24.5	0.61	0.67	25.29	330	0.52	0.62

GJ/Kinaskan Project

- ▶ Donnelly mineralization open to expansion
- ▶ Numerous additional targets
- ▶ Amenable to low strip open pit
- ▶ 10 km from Stewart Cassiar highway
- ▶ Contained gross metal value compares favourably to producing mines
- ▶ Proposed power grid by B.C. government



2005 Summer Program

- ▶ 15,000 metres drilling in 50 holes
- ▶ 12,000 metres on Donnelly
- ▶ 2005 goal is to triple Donnelly resource and bring it to “drill indicated” for pre-feasibility
- ▶ Environmental baseline studies
- ▶ 3,000 metres on other targets



Corporate Info

- ▶ Lundin Group company
- ▶ 36 million shares outstanding
- ▶ CGH – TSX
- ▶ Directors: Lukas Lundin, Rick Bailes, Ron Netolitzky, Mike Halvorson, William Rand, John Craig, Mike McInnis