

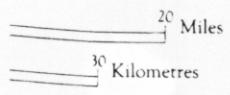
53
(1955)
(1969)
cpx in carbonate

1974 → Combed
1981 - Combed
1969 - Kelley M.
trenching
cpx in shen
massive py, zns, pbs, barite
in bx. dol, gnlite, slate, gsch
± 59

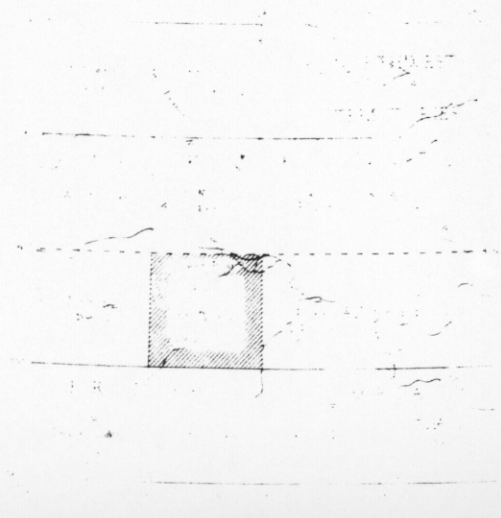
104P M/DAME

Hidden Valley
104P/028
883950

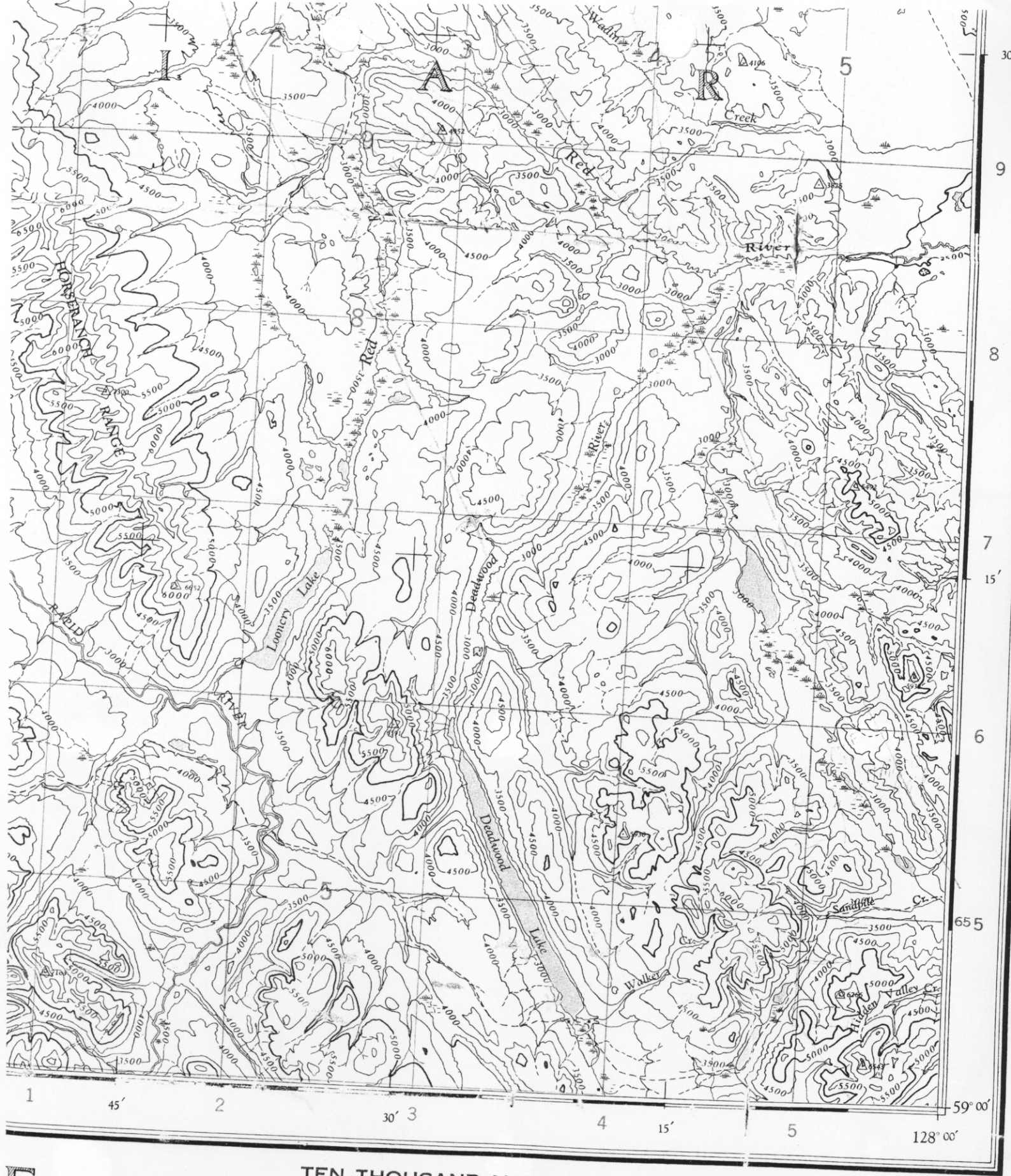
REFERENCE



| | | | |
|--------------------------------|-----|-------------------------|----------|
| Triangulation Station | △ | Spot Elevation in feet | 821 |
| Contours, Elevation | | Woods Areas | |
| Depression | | Swamp in Marsh | |
| Form Lines | | | |
| Stream: Intermittent | | Cut | R 1.671 |
| Dam | | Navigation Lock | |
| Falls | | Marsh | |
| Rapids | | Sand | |
| Airfield, Military, E. in feet | 765 | Navigation Buoy | |
| City | | Navigation Buoy | |
| Auxiliary | | Fire Extinguisher Tower | |
| Building | | Bench Mark | B.M. 762 |
| Church | | Triangulation Station | |
| School | | | |



104P (M)



E
 MCDAME
 104P

TEN THOUSAND METRE
 UNIVERSAL TRANSVERSE MERCATOR GRID
 ZONE 9

REFERENCE

| | | | | | |
|--------------------|-------|------|-------------------------|-------|-------|
| Inglu Station | | △ | Spot Elevation, in feet | | .821 |
| Contours Elevation | | 1500 | | | |

