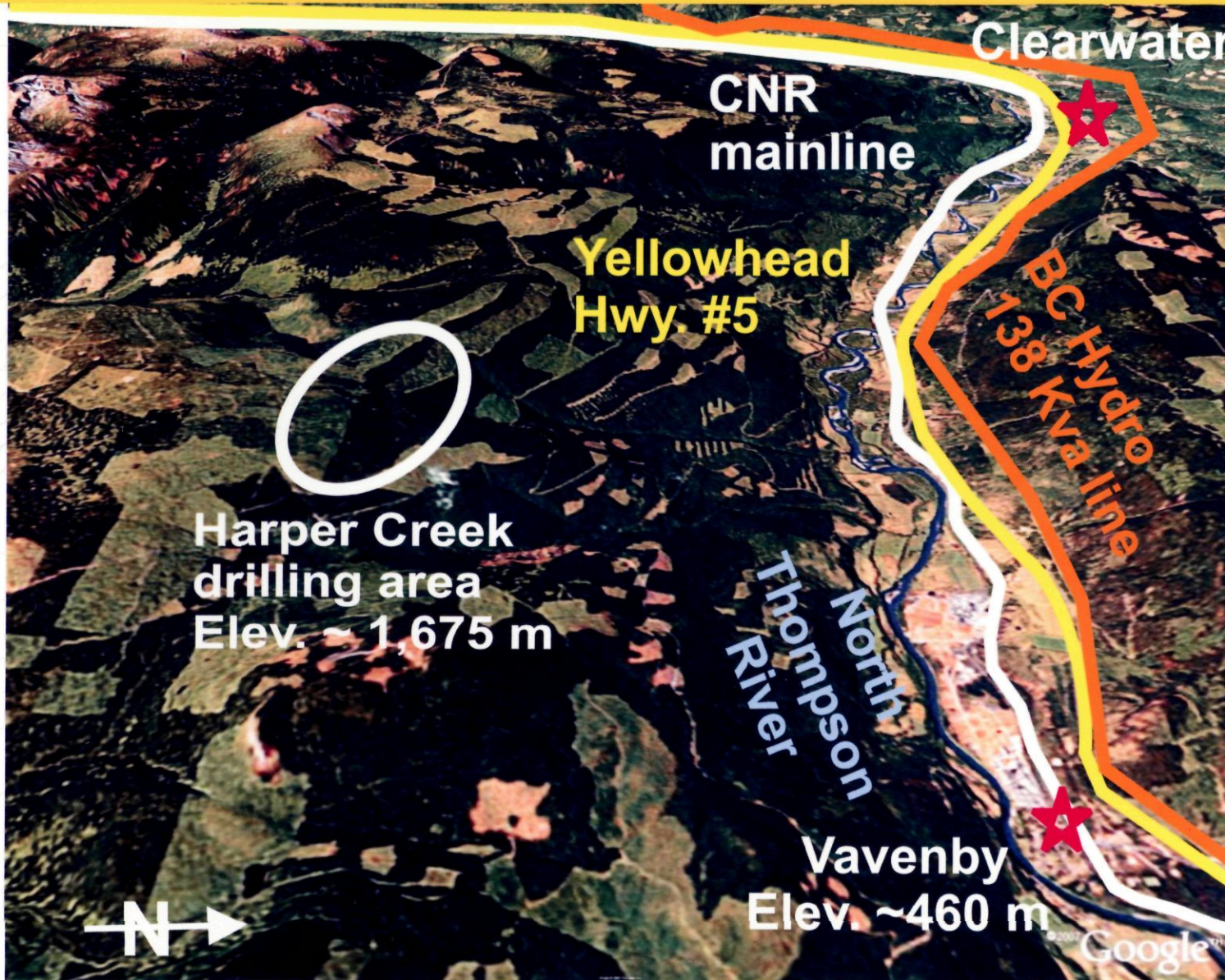


Harper Creek Project & Adjacent Infrastructure

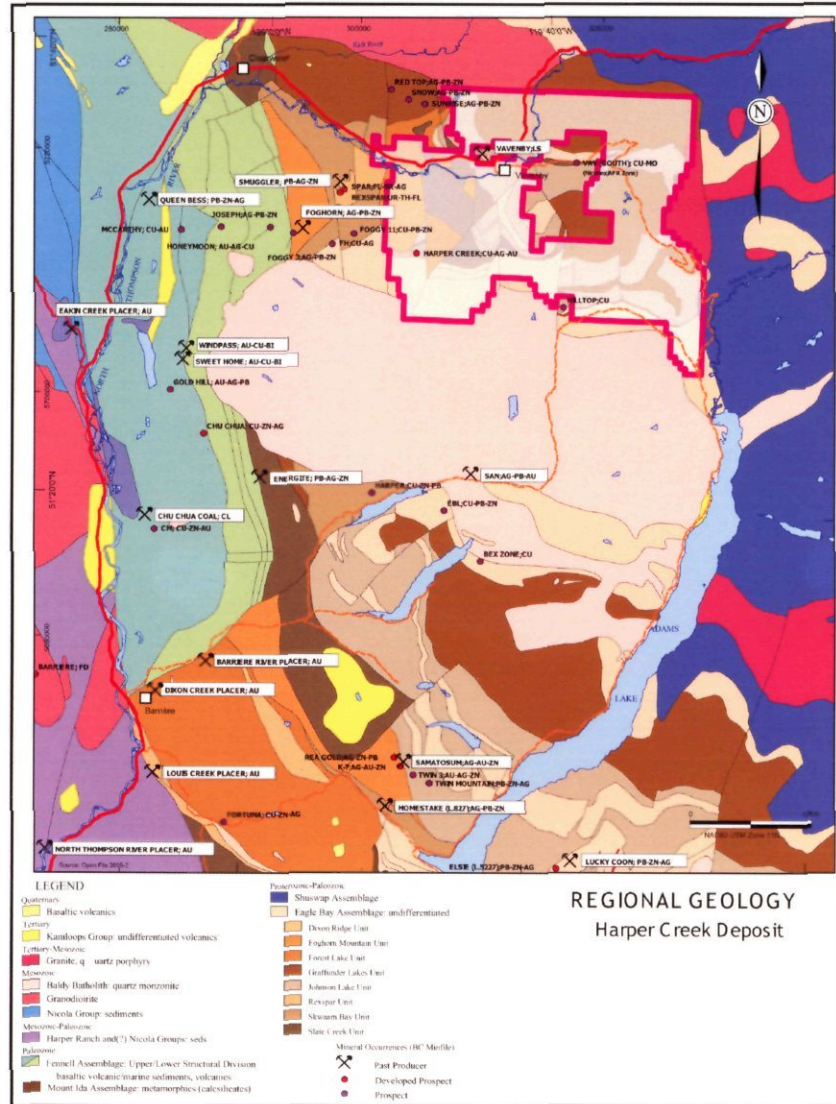
883772



YELLOWHEAD
MINING INC.

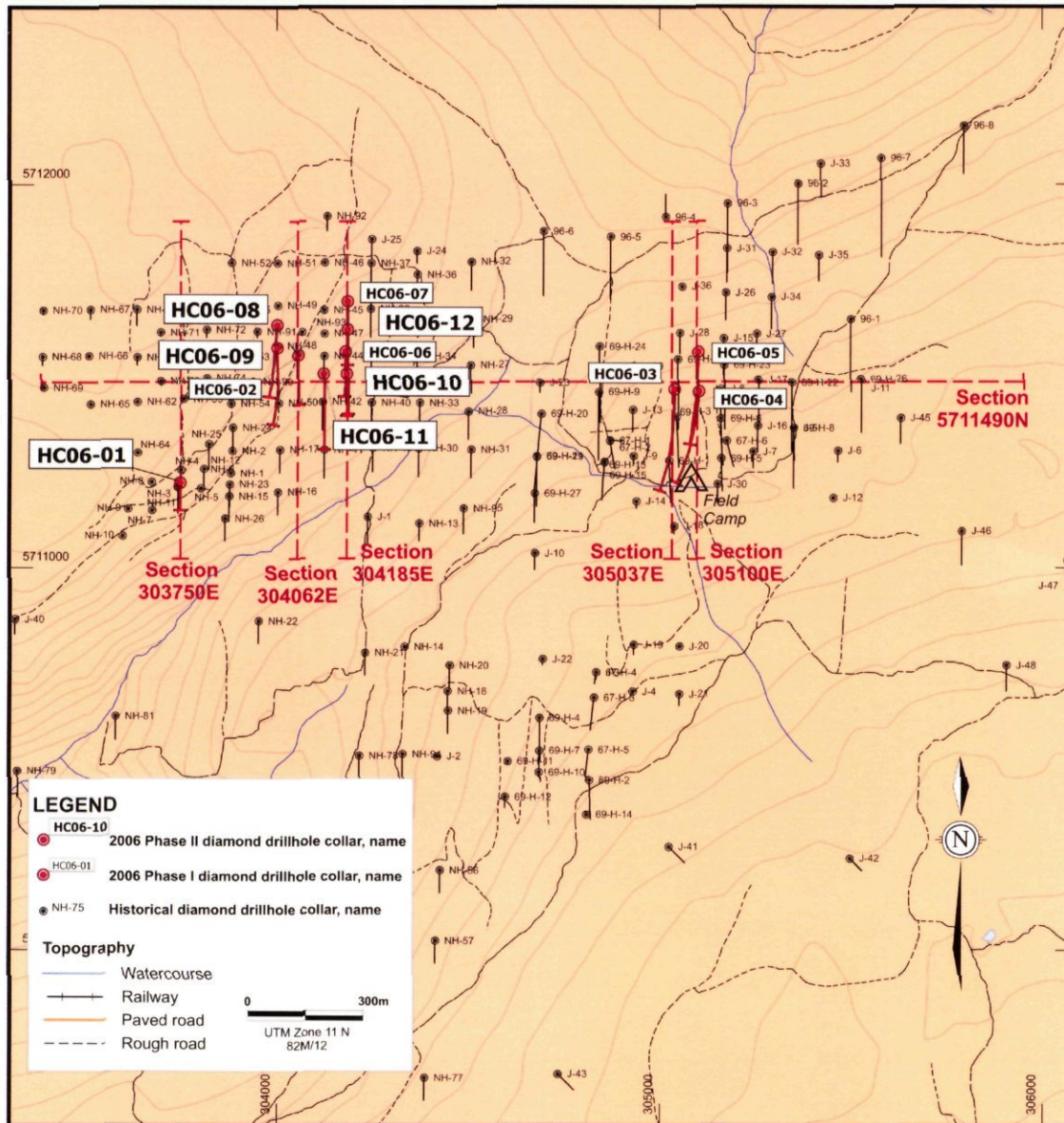
Handwritten signature: S. Harper
Handwritten signature: S. Harper
Handwritten signature: S. Harper

Regional Geology



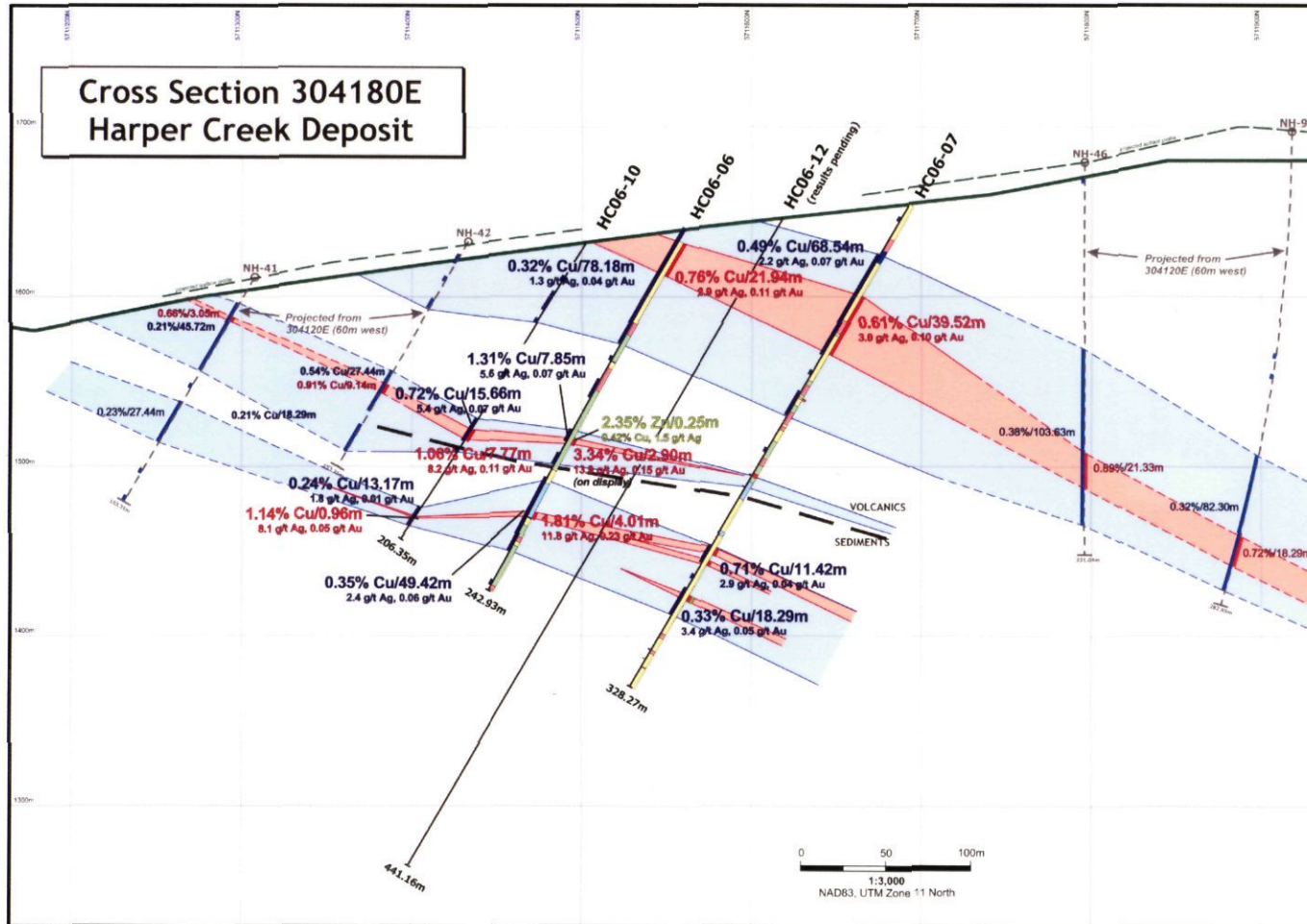
YELLOWHEAD
MINING INC.

YMI's 2006 and Historical Drill Plan



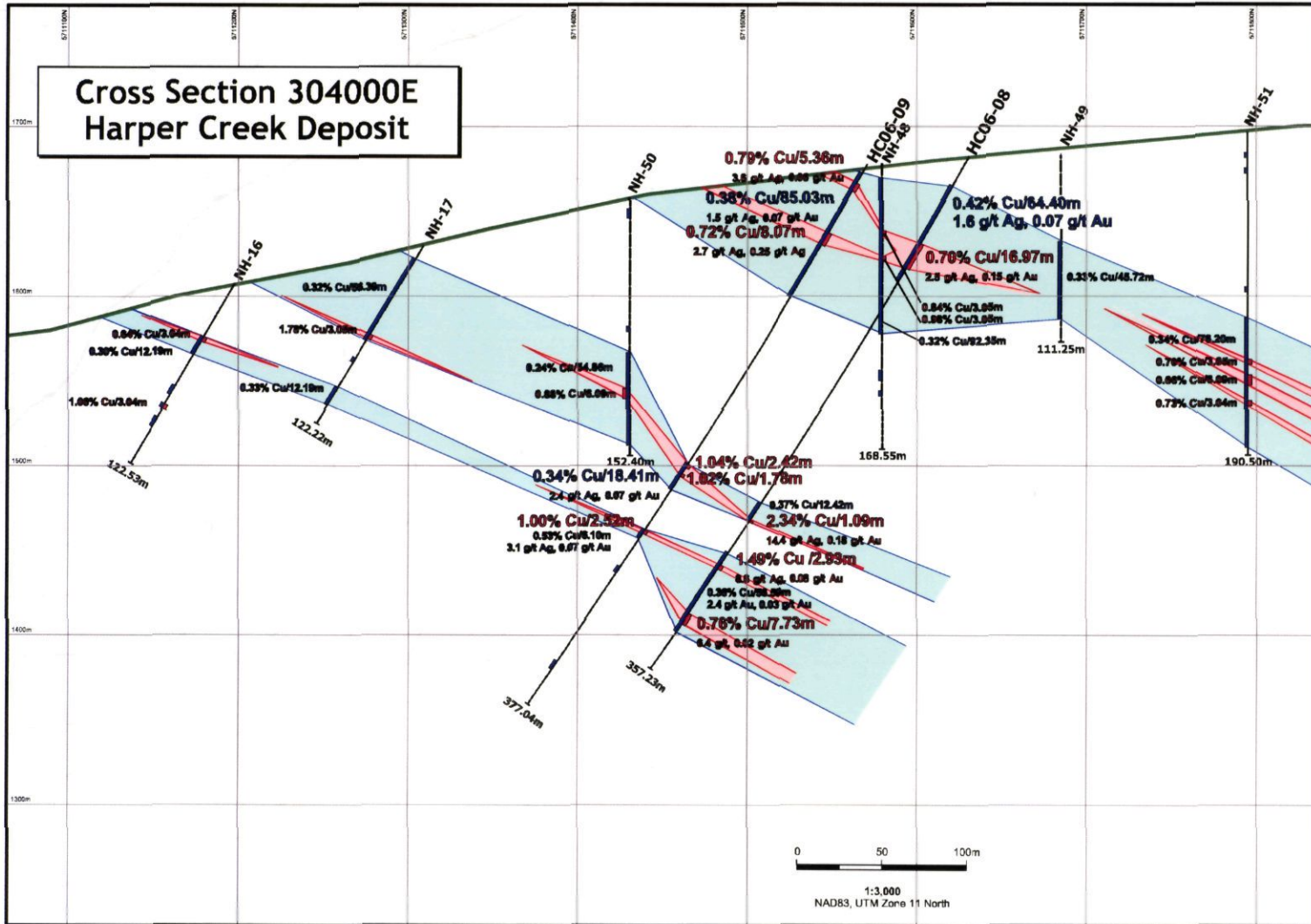
**YELLOWHEAD
MINING INC.**

Cross Section 304180E

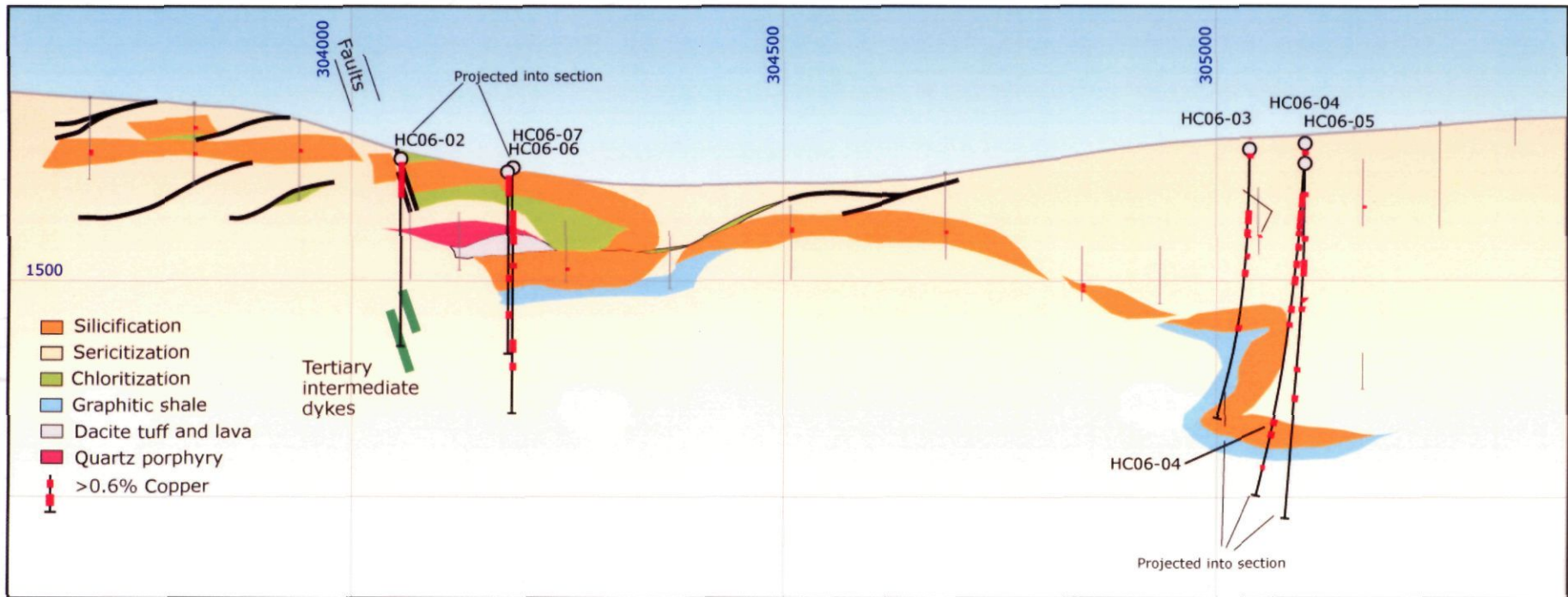


**YELLOWHEAD
MINING INC.**

Cross Section 304000E



2007 Geological Long Section



YELLOWHEAD
MINING INC.

Harper Creek Deposit Significant Intersections

Hole	Interval (m)			Grades			
	From	To	Length	Cu (%)	Ag (ppm)	Au (ppb)	Zn (ppm)
HC06-01							
	40.35	41.05	0.70	2.15	12.40	240	924
	46.60	47.05	0.45	2.47	11.70	340	608
	59.30	60.12	0.82	1.38	9.50	70	615
	79.20	79.74	0.54	0.81	5.30	75	194
	101.72	103.50	1.78	1.48	12.00	160	1300
	107.55	108.51	0.96	1.46	12.50	215	315

HC06-02							
	7.53	49.00	41.47	0.67	2.50	153	391
incl	21.12	27.78	6.66	1.10	3.10	0.23	390

HC06-03							
	3.05	222.70	219.65	0.35	1.20	42	106
incl	10.85	11.25	0.40	1.06	3.30	140	201
incl	96.75	110.20	13.45	0.63	1.80	102	195
incl	125.05	131.05	6.00	0.81	2.20	53	125
incl	186.70	190.60	3.90	0.91	3.40	68	237

HC06-04							
	12.55	295.85	283.30	0.31	1.10	42	126
incl	12.55	12.95	0.40	1.22	4.10	135	296
incl	92.75	101.75	9.00	0.67	1.90	117	170
incl	109.25	111.80	2.55	0.88	3.00	129	208
incl	119.80	120.70	0.90	1.11	3.00	60	57
incl	137.75	140.20	2.45	0.83	3.20	80	32
incl	160.30	163.70	3.40	1.21	5.00	106	100
	390.75	393.40	2.65	0.76	4.70	43	495

HC06-05							
	21.10	198.40	177.30	0.28	0.90	33	91
incl	132.25	148.25	16.00	0.66	1.90	86	117
	182.80	182.95	0.15	2.52	12.50	50	127
	275.24	275.50	0.26	2.37	19.50	560	1441

HC06-06							
	0.00	78.18	78.18	0.32	1.30	40	228
incl	8.23	30.17	21.94	0.76	2.90	111	367
	136.10	143.95	7.85	1.31	5.60	69	1117
	140.80	141.05	0.25	0.42	1.50	50	23500
incl	141.05	143.95	2.90	3.34	13.90	145	1121
	168.02	217.44	49.42	0.36	2.40	55	296

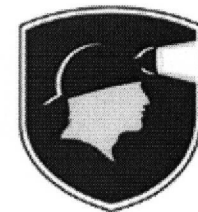
HC06-07							
	34.15	102.69	68.54	0.49	2.20	73	219
incl	60.50	100.02	39.52	0.61	3.00	105	309
	232.57	243.99	11.42	0.72	2.90	43	226
incl	232.57	237.09	4.52	1.25	4.20	40	380
incl	241.61	243.99	2.38	0.73	4.20	80	164
	264.00	267.92	3.92	0.62	8.30	95	4619

HC06-08							
	20.00	84.40	64.40	0.42	1.60	67	285
incl	58.89	75.86	16.97	0.70	2.50	148	407
	239.25	251.67	12.42	0.37	2.70	69	258
incl	250.58	251.67	1.09	2.34	14.40	175	735
	273.91	330.50	56.59	0.36	2.40	27	260
incl	282.36	285.29	2.93	1.49	8.60	76	818
and	316.89	324.62	7.73	0.76	6.40	20	579

HC06-09							
	6.10	91.13	85.03	0.38	1.50	66	252
incl	12.73	18.09	5.36	0.79	3.60	59	324
incl	46.63	54.70	8.07	0.72	2.70	251	308
	206.10	224.51	18.41	0.34	2.40	74	385
incl	206.10	208.52	2.42	1.04	8.70	147	1647
incl	212.65	214.43	1.78	1.02	4.70	155	142
	252.60	258.70	6.10	0.53	3.10	67	208
incl	252.60	255.12	2.52	1.00	6.00	119	396

HC06-10							
	122.10	137.76	15.66	0.72	5.37	74	264
incl	128.93	136.70	7.77	1.06	8.20	108	344
	190.48	191.44	0.96	1.14	8.10	45	528

Hole	Interval (m)			Grades			
	From	To	Length	Cu (%)	Ag (ppm)	Au (ppb)	Zn (ppm)
HC06-12							
	6.10	65.28	59.18	0.51	1.72	107	242
incl	18.20	22.20	4.00	0.81	2.40	77	137
incl	32.34	38.83	6.49	0.74	3.36	125	244
incl	44.83	56.64	11.81	0.88	2.42	293	429
	70.28	72.28	2.00	0.39	0.90	25	222
incl	71.28	72.28	1.00	0.64	1.30	25	266
	184.45	191.11	6.66	0.67	2.93	32	350
incl	187.42	191.11	3.69	1.12	4.68	45	497
	201.51	209.07	7.56	1.11	5.59	47	527
incl	201.51	206.88	5.37	1.41	6.92	55	671
and	205.80	206.88	1.08	3.02	13.60	55	542
	215.59	236.00	20.41	0.41	2.07	38	230
incl	217.44	218.05	0.61	0.95	3.80	30	333
incl	220.54	222.63	2.09	0.93	3.63	58	275
incl	226.38	227.82	1.44	0.90	3.60	55	716
incl	230.73	232.13	1.40	0.85	5.03	70	578
	253.12	254.12	1.00	0.81	8.58	21	1022
incl	253.12	253.47	0.35	1.79	19.50	40	891



**YELLOWHEAD
MINING INC.**

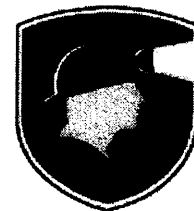
Selected Historical Drill Results

Showing Cutoff Grade Sensitivity

Cutoff (% Cu)	Hole #	Interval (m)	Length (m)	Cu (%)	Ag (g/t)	Au (g/t)
0.9	NH3	44.20 – 62.50	18.30	1.13	6.56	0.26
0.9	"	92.96 – 100.58	7.62	1.06	8.57	0.27
0.9	NH5	6.10 – 18.30	12.20	1.27	6.9	0.34
0.9	NH11*	36.58 - 48.78	12.20	1.32	7.25	0.11
0.6	J33 *	268.29 – 286.59	18.30	0.61	1.96	0.14
0.6	69H-23	225.65 – 252.98	27.43	0.70	n/a **	n/a
0.6	J-32	219.46 – 243.84	24.38	0.70	n/a	n/a
0.6	NH-93	48.77 – 79.25	30.48	0.72	n/a	n/a
0.6	NH-23	18.29 – 39.02	21.33	0.78	n/a	n/a
0.6	NH-46	170.67 – 192.02	21.33	0.89	n/a	n/a
0.3	J-8	30.48 – 280.42	249.74	0.37	n/a	n/a
0.3	69H-3	3.96 – 153.45	151.49	0.43	n/a	n/a
0.3	J-32	143.23 – 262.13	118.87	0.39	n/a	n/a
0.3	NH-46	27.43 – 146.30	118.87	0.36	n/a	n/a
0.3	96-3 *	192.00 - 315.00	123.00	0.37	1.2	0.04
0.3	"	228.00 - 276.00	38.00	0.50	1.7	0.08

* resampled by Yellowhead

** n/a: not analyzed



**YELLOWHEAD
MINING INC.**