

Goldstream

883529

Schroeter, Tom EM:EX

From: Schroeter, Tom EM:EX
Sent: Friday, January 09, 2004 3:56 PM
To: 'Gordon Gibson'
Subject: RE: Goldstream-Spire 3D

Thanks very much, Gord - looks great.

Tom

Tom Schroeter, P.Eng./P.Geol.
Senior Regional Geologist
Geological Survey and Development Branch
Mining and Minerals Division
Ministry of Energy and Mines

Direct Telephone 604 660-2812
Messages & Enquiries 604 660-2708
Facsimile 604 775-0313
email tom.schroeter@gems6.gov.bc.ca
Autotel 604 662-9091

-----Original Message-----

From: Gordon Gibson [mailto:ggassoc@telus.net]
Sent: Friday, January 09, 2004 11:21 AM
To: Schroeter, Tom EM:EX
Cc: Logan, Jim EM:EX
Subject: Goldstream-Spire 3D

Fri 9 Jan 2004 11:04 AM PST

Tom,

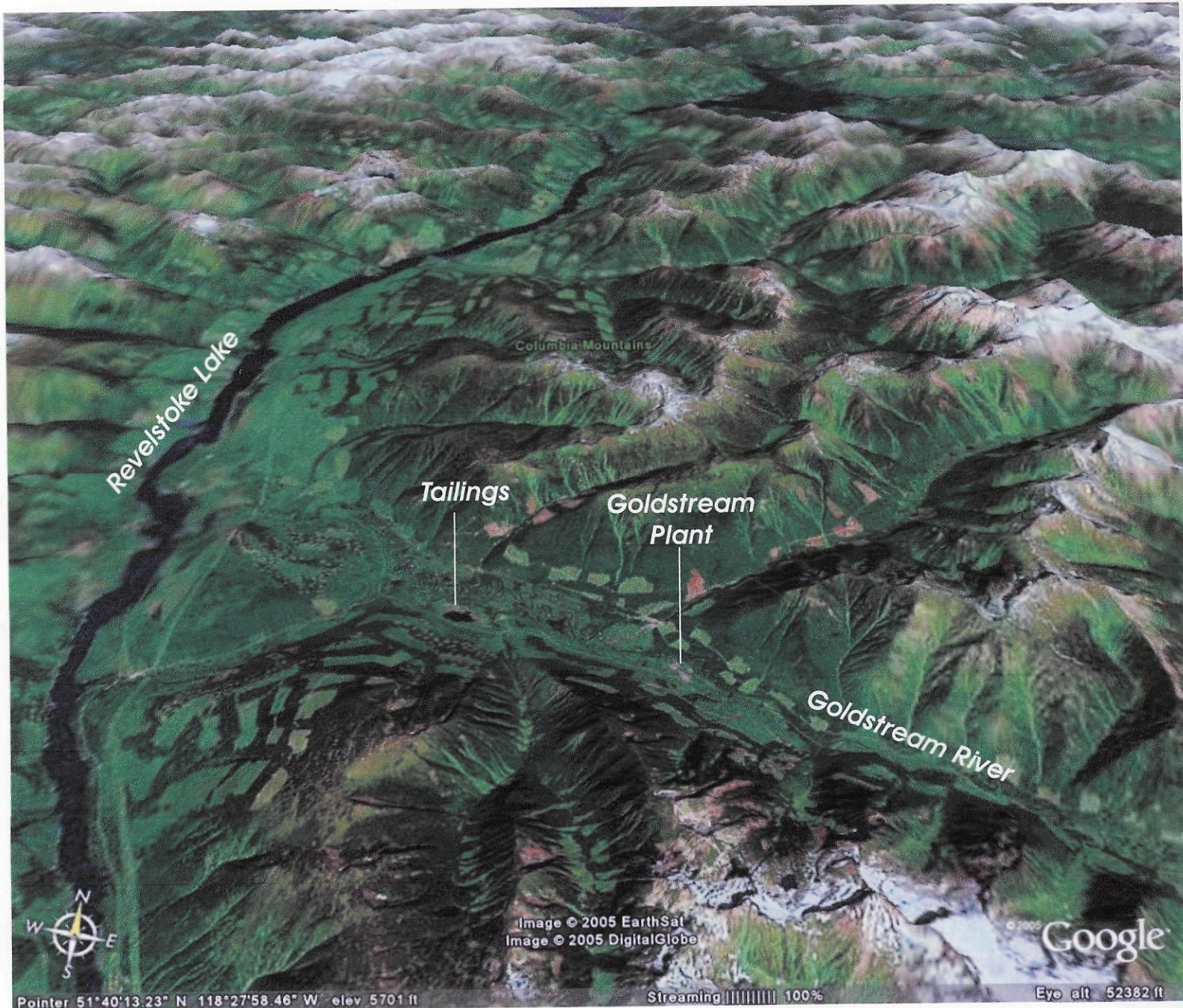
Re. ORPHAN BOY RESOURCES INC.

Just wanted to put this diagram into your hands.

An update of the Goldstream - Downie geological database is in prep, to include recent mapping west of Brewster Creek, the Spire and Boutwell discoveries, etc. Should have a continuous-color plot ready for Roundup and will get copies to Jim and yourself.

Best regards,

Gordon Gibson
G. GIBSON & ASSOCIATES
Suite 201 - 2020 West 2nd Avenue,
Vancouver, B.C. Canada V6J 1J4
Tel: 604-732-0218
Fax: 604-732-9113
mailto:ggassoc@telus.net



GOLDSTREAM

[From: John Chapman, July 11/05]

GOLDSTREAM MINE (Cu-Zn)

Orphan Boy Resources Inc.

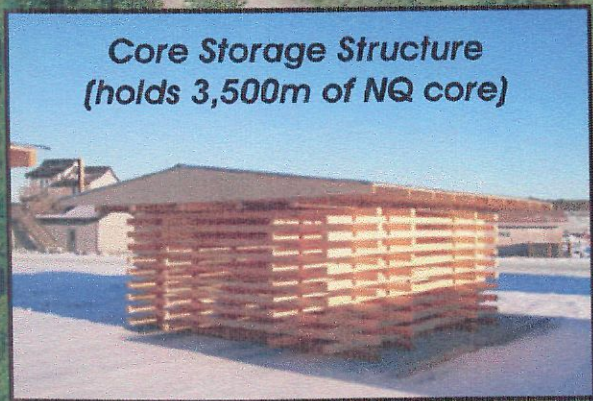
- 1000 tonne-per-day Cu-Zn mill on care and maintenance
- Purchased from Imperial Metals in 2002
- Evaluating feasibility of trucking copper-gold ore from **Willa** to Goldstream for processing (230 km)
- Drilling and surface surveys on numerous targets in 2004:
 - E.g. Spire, Rain, Boutwell and others.....



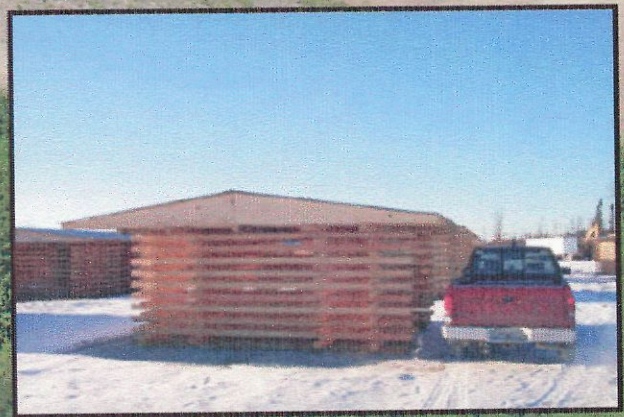
From Cathro (Sept. 13/04): On S1047 e MEM. SHR/Cathro (CIM Sept. 2004. p. 20)

Goldstream Mine Bethlehem Resources (1996) Corporation

Proposed Core Storage



Core Storage Structure
(holds 3,500m of NQ core)



By: J.Chapman, 2004/09/01

Looking N over GOLDSTREAM

AS → Goldstream

JCS → Goldstream

Schroeter, Tom EM:EX

From: Schroeter, Tom EM:EX
Sent: Thursday, September 02, 2004 9:03 AM
To: XT:Chapman, John Leader Mining International Inc EAO:IN; Ron Coombes
Cc: Gerald Carlson; Mark Brown; Bill Gilmour; David Makepeace; Gordon Gibson; Stephen Phillips; Bruce Watt; Jay Collins; Art Winckers; Red Daley
Subject: RE: Proposed Core Storage at Goldstream - 200409 Plan

Thanks, John - looks good!

Tom

Tom Schroeter, P.Eng./P.Geo.
Senior Regional Geologist
Geological Survey and Development Branch
Mining and Minerals Division
Ministry of Energy and Mines

Direct Telephone 604 660-2812
Messages & Enquiries 604 660-2708
Facsimile 604 775-0313
email tom.schroeter@gems6.gov.bc.ca
Autotel 604 662-9091

-----Original Message-----

From: John A. Chapman [mailto:jacms1@sprynet.com]
Sent: Wednesday, September 01, 2004 4:05 PM
To: Ron Coombes
Cc: Gerald Carlson; Mark Brown; Bill Gilmour; David Makepeace; Gordon Gibson; Stephen Phillips; Bruce Watt; Jay Collins; Art Winckers; Red Daley
Subject: Proposed Core Storage at Goldstream - 200409 Plan



Goldstream Mill (~2002)
[from John Chapman]