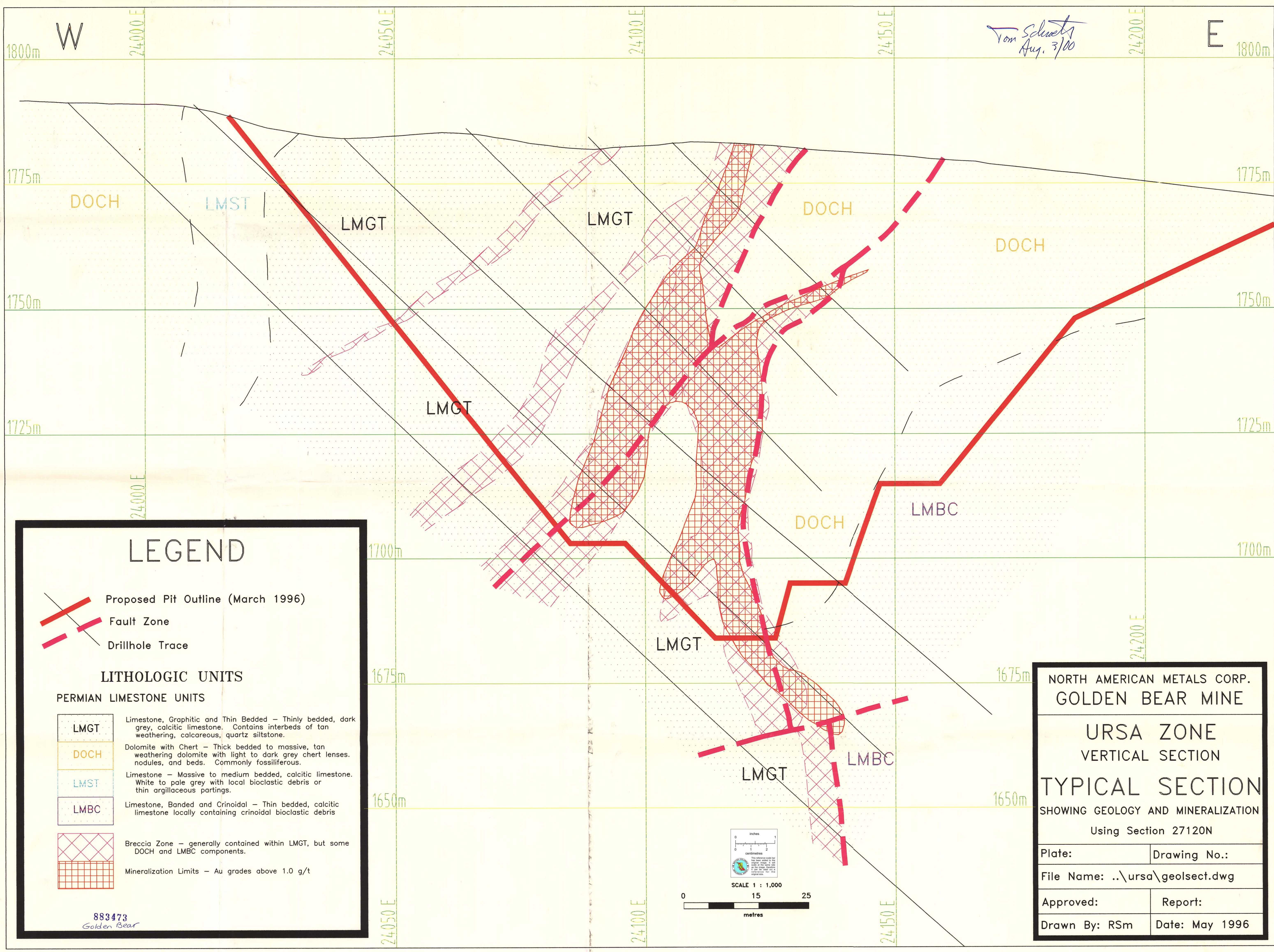


Tom Schwetsky
Aug. 3/00



LEGEND

- Proposed Pit Outline (March 1996)
- Fault Zone
- Drillhole Trace

LITHOLOGIC UNITS

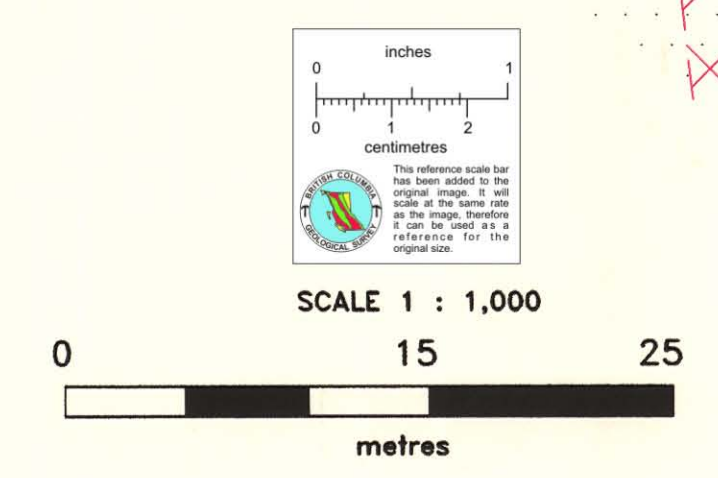
PERMIAN LIMESTONE UNITS

- LMGT** Limestone, Graphitic and Thin Bedded - Thinly bedded, dark grey, calcitic limestone. Contains interbeds of tan weathering, calcareous, quartz siltstone.
- DOCH** Dolomite with Chert - Thick bedded to massive, tan weathering dolomite with light to dark grey chert lenses, nodules, and beds. Commonly fossiliferous.
- LMST** Limestone - Massive to medium bedded, calcitic limestone. White to pale grey with local bioclastic debris or thin argillaceous partings.
- LMBC** Limestone, Banded and Crinoidal - Thin bedded, calcitic limestone locally containing crinoidal bioclastic debris
- Breccia Zone - generally contained within LMGT, but some DOCH and LMBC components.
- Mineralization Limits - Au grades above 1.0 g/t

NORTH AMERICAN METALS CORP.
GOLDEN BEAR MINE

URSA ZONE
VERTICAL SECTION
TYPICAL SECTION
SHOWING GEOLOGY AND MINERALIZATION
Using Section 27120N

Plate:	Drawing No.:
File Name: ..\ursa\geolsect.dwg	
Approved:	Report:
Drawn By: RSm	Date: May 1996



883473
Golden Bear