

① GOLD CORD

Mon. Aug 26/85  
Cloudy, warm

- Jan M. + self

Camp elev ~ 4600 ft. (Noranda)

Lake elev ~ 4700 ft.

Bearing  $150^{\circ}$  ~ 400 ft.

(1 k. to 1st pt. (1))

Pt. 1 to 'staked here' ~ 375 ft

Bearing  $160^{\circ}$  from LAKE to  
west end of Vein 'system'

~ 800 ft. Elev. 4705 ft.

- Bearing of Vein System ~  $110^{\circ}$

GC-85-1 Grab of Qtz. Vein 'dump'  
with mal. + ZnS

GC-85-2 Grab of Qtz. Vein

- shaft on SW of Vein

2 ft VEIN @  $120^{\circ}/40^{\circ}$  NE

Host rk. = Gd.

Texture - radiating qtz 'veins' in  
'rotten' qtz

Photo

114P67E 114P01S

883464

50

80

76

52

77

115

90

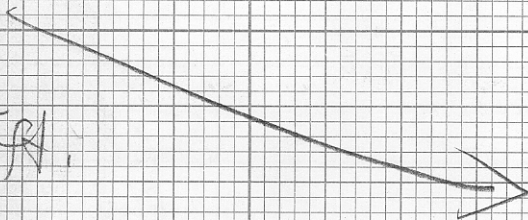
115

---

 655

ft.

350



135

240

95

85

130

40

160

---

 885

655

885

---

 1540

② GOLD CORD

START X



50 feet X

80 X

road  
81 100 to N  
98 + 50 F  
78 - 81 X

85-1 → 52 Pump

77 X  
40 ft  
START  
88  
85

115 ft  
COVERED  
PASS

SNOW

SNOW

SNOW

90 X

110° → To Stone Hill  
115 ft

655 feet →

③

GOLD CORD

mon, AUG. 26/85  
Cloudy, WARM

Ref. Noranda map (Assessment Rpt)

GC-85-3 Stone Hut

Elev. 4840 ft.

Photo VEM (2 ft.) @ 080°/35° NE

GC-85-3a Chip sq. across  
2 ft. (.75m)

- ccf. Noranda values

Note Native Gold (NG) on HW  
of VEM in gtz. (See M sample)

GC-85-4 Small pit ~ 135 ft.  
from stone hut @ 110°

GC-85-5 + 240 ft. to area of  
3 small rusty dumps

GC-85-6 + 95 ft. to small  
dump pile (4 ft. sq.)

+ 85 ft. to west end  
of 'crude road' (Nor. map)

GC-85-7 + 130 ft. QU dump

TOTAL LENGTH OF  
QUARTZ VENE TRACED

$$= 655' + 885'$$

$$= \underline{1540 \text{ feet}}$$

(4)

GOLD CORD

Aug. 26/85

+ 40 ft. to area of 'old claim  
Elev. 4850 ft' Posts (4)

GC-85-8

+ 160 ft. to old shaft

+ 87 ft. to Noranda trench  
- alt'd (veined) Granodiorite  
- No Qtz veining

NOTE Fault parallels vein  
on North side

Lincation (hbl'd) in hbl'd Gd  
= 110°

HOT RK. = Foliated hbl'd  
granodiorite with finer  
phases + 'digestion' frags. of  
grey Gd to diorite (foliated)

No other veining other than main  
Qtz vein.