

35 North
14 exploratory
South

Getty North

Oct. 9/96

17

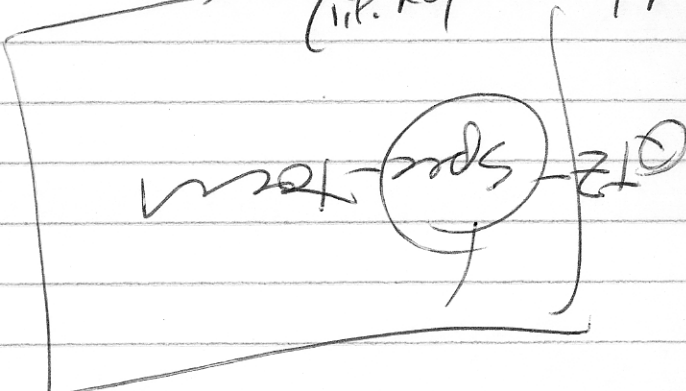
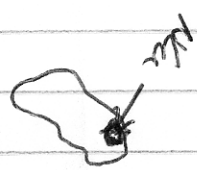
~ 20m fans @ .45% Cu

David Blm

Getty South

* Cominco owns ground between GS, GN + Trans and showing (imp. key to 'big' picture.)

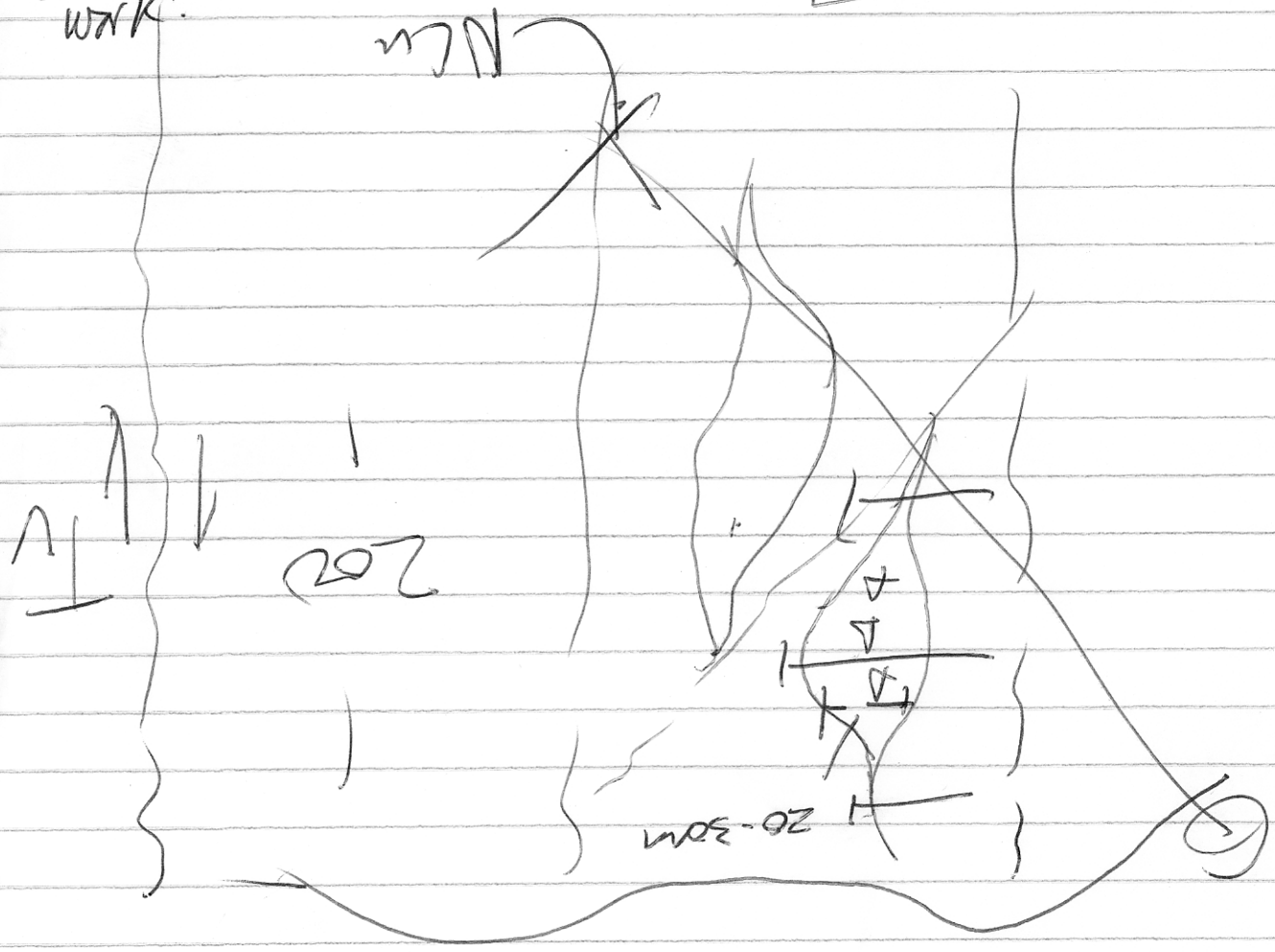
Previous (Steve Cower) reserves are 'baggy' (needs much more work.)



NLC

200

20-30m



Estay mine: 10,000m dth

Winstow Gold option (Bronson Ck.)

Atkie \$1M

Tellawa coal

Willow Ck. - dth

Wishaw granite - Ava Res.

Reed Lk. (Fullers Earth)

Ajax west - close in May

Kamloops - 22M '96 - 415,000 m dth

Fors 2400m in 5 sites in early '97

Target = Sullivan horizon at depth

'97 - 1500m decline e Bull River (Stuart Auld)

look at Cu-Au veins

Jersey - Emerald - w/o dth in '97

Silver Queen
Kettle River looks for option (A)

Linda Caron - Kettle River expects ~~battle~~ Echo Bay to option fall its holdings in the Greenwood camp (soon!), KEG '99

Call Gerry Carlson re-lunch with Doug Leishman (brokerage)

'input' at Pathways '98!

Estay Ck. 109 zone - colliform - Flotation - amenable
14,585m of expl'n dth in '96 (w/ 250,000 oz Au)
M.I. - 163 tpd

ESKAY Ck. - (Edmunds)
since Dec '91 to end '96
- 260,000 oz Au @ 66.6 tpd @ 352 Ag 70,000 oz eqv

'96 resource growth of 900,000 oz Au
120,000 oz Au eqv in NE (upper section of 100m N42E rh40/10)

July 11/94 - Greenwood Days - +

AUC - Lorne Band - no expl'n on site this yr. - mainly number crunching
- '96 additional res. is at NE part of Valley pit, adj. to major Lornex fault
- currently stripping north area (o/v) of Valley pit, plus east end of Lornex pit

Rmt Sally McMillan / Ross + Mona Blusson
- "bring sleeping bags"

Betty North ask for depth
16,200m (53,200 tpd) of dth - '89

\$3M Glossie zone
- Bethlehem style Woods Ck. zone into MAC + (gain)

10 dth 5 2nd in Camp zone into MAC + 0.9% Au
\$23M start 4 km - contact 13% Mo . 1200

4,000m dth completed since July '96
nearly completed program
1 1/2 m in Au, 4 1/2 m in Cu
(single holes) estimates in office
- then reserve

1m/100 - Steve Blavier - number crunching
waiting
MT POLLEN: done - production (kg)
48.3g / Au @ 27% Cu - concentrate
- high acid consumption