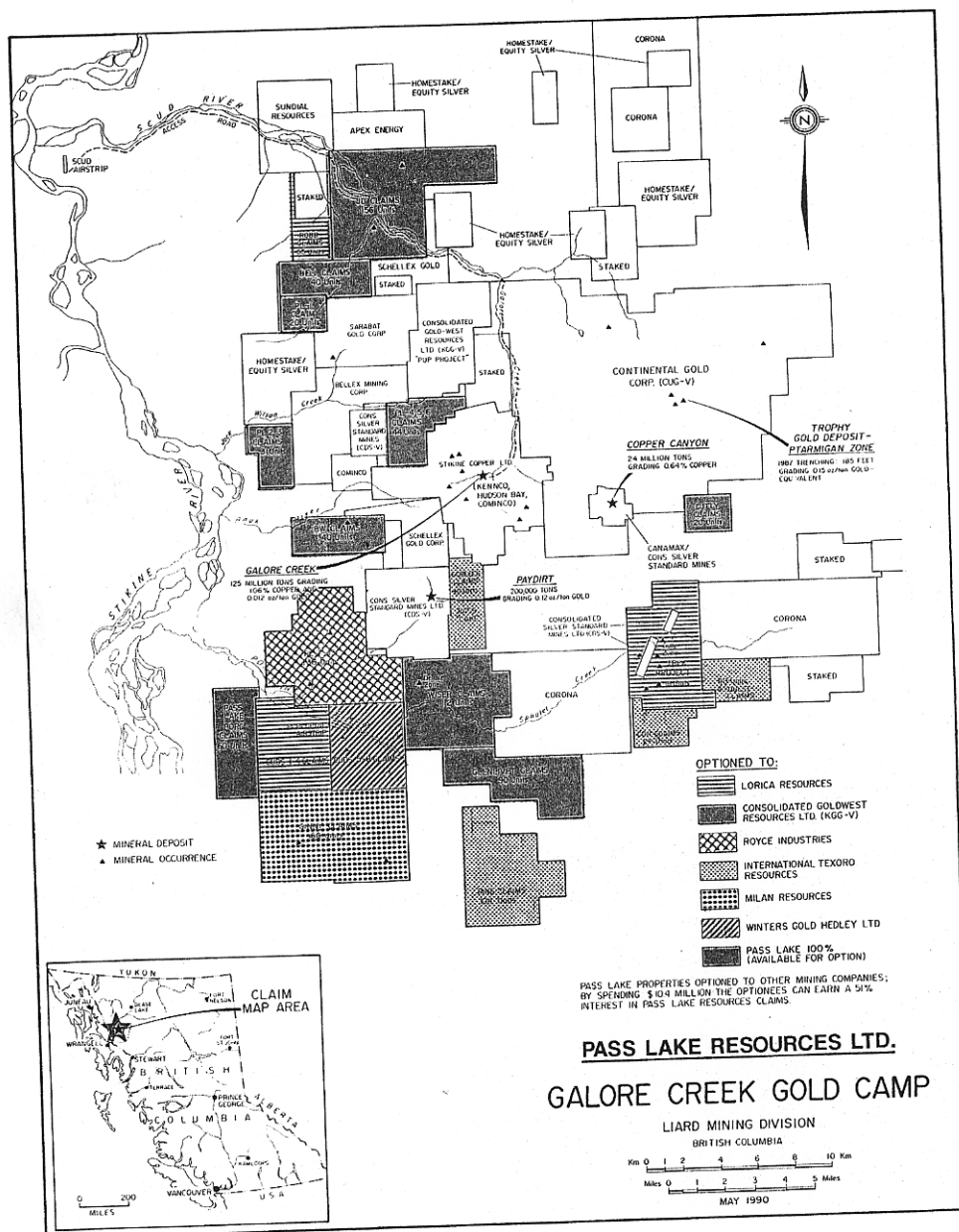


# GALORE CREEK UPDATE



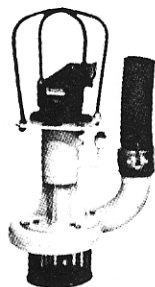
## Exploration expenditures at record levels

Overall exploration expenditures at Galore Creek in 1990 are forecast to be well in excess of \$5,000,000, which is believed to be a record for the camp. As this is written (mid-September), about \$3,600,000 is estimated to have been spent, with the remainder largely allocated to late-season drill programs. Field operations have been centered out of three main camps on the Porcupine River, Scud River and the old Galore Creek base, employing up to 80 crew in total.

## GREENACRES PUMPS & EQUIP. LTD.



Dust Suppression Big Gun



Pit & Dredge Pumps

**PHONE: 493-1215**  
**FAX: 493-3672**

2100 Dartmouth  
Penticton, BC V2A 7W7



**Van Alphen  
Diamond  
Drilling Ltd.**

Box 754  
Smithers, BC  
VOJ 2N0

**Diamond Drilling Contractors**

**Phone: (604) 847-2458**

**Fax: (604) 847-3543**

# HOMESTAKE

M I N I N G C O M P A N Y

HOMESTAKE MINING COMPANY (USA) (702) 331-6980 or (303) 277-0700  
HOMESTAKE MINERAL DEVELOPMENT COMPANY (CANADA) (604) 684-2345  
HOMESTAKE INTERNATIONAL MINERALS LTD. (604) 684-0755  
HOMESTAKE GOLD OF AUSTRALIA LTD. 011-61-8-332-7811  
HOMESTAKE MINERA CHILE S.A. 011-56-2-231-7103



## LORING LABORATORIES LTD.

- COMPLETE ASSAYING FACILITIES
- FIRE ASSAYING
- GEOCHEMICAL ANALYSIS
- UMPIRE ANALYSIS
- COAL ANALYSIS
- OIL & GAS
- WATER ANALYSIS
- CONSULTING SERVICES

**(403) 274-2777**  
**FAX: (403) 275-0541**

629 BEAVERDAM RD. NE  
CALGARY T2K 4W7

ALSO LOCATED IN GEORGETOWN, GUYANA

## D J DRILLING CO. LTD.

**CONTRACT DIAMOND DRILLING**

*Surface and Underground  
Bulldozer Services Also Available*

WHITE ROCK, B.C.  
2115 - 129th STREET  
V4A 8H6  
(604) 531-4134  
FAX: (604) 531-7885

WATSON LAKE, Y.T.  
BOX 331  
(403) 536-2611  
FAX: (403) 536-2617

DIAMOND  
DRILLING CONTRACTOR

SURFACE  
AND  
UNDERGROUND

**N. MORISSETTE**  
Canada Inc.  
EXPERIENCE PRODUCING RESULTS  
Member of **CDDA**

Head Office  
P.O. Box 789  
310 Niven Street  
Haileybury, Ontario  
POJ 1K0  
(705) 672-3311  
Fax: 672-2371

C.P. 729  
Val d'Or (Qué.)  
J9P 4P6  
(819) 825-8661  
Fax: 825-0194

C.P. 340  
Chibougamau (Qué.)  
G8P 2K7  
(418) 748-6471  
Fax: 748-4726

P.O. Box 40  
Cochénoir, Ontario  
POV 1L0  
(807) 662-6191  
Fax: 662-6281

Suite 215, 2nd Floor  
2366 Ave. C. North  
Norplex Bldg.  
Saskatoon, Sask.  
S7L 5X5  
(306) 665-1414  
Fax: 244-4084

Drilling programs completed or underway include Mingold (Galore Creek), Gigi (Trophy), Bellex (Jack Wilson Creek), Akiko Lori (Scud Glacier) and Consolidated Rhodes (Copper Canyon). Total footage drilled to date probably exceeds 20,000 feet (6 000 metres), with probably at least another 10,000 feet (3 000 metres) planned.

Pass Lake expects to see over \$1,300,000 spent this year on its Galore Creek properties, all of which are under option to third parties. Although many of the company's claims are at an early exploration stage, requiring extensive surface exploration, about \$400,000 will be destined for drilling on two properties in mid-September and early October.

The first program will be undertaken on the Deluxe Zone, a wide (50 - 100 m) two-kilometre-long gold-bearing structure found by optionee Consolidated Goldwest Resources in late 1989. Goldwest has funds allocated to drill 3,300 feet (1 000 metres) initially once extensive geological, geochemical and geophysical data are compiled and interpreted. Samples containing up to 8.25 oz./ton gold have been collected from the zone.

The second drill program will be on the Trek property, under option to Lorica Resources. Up to 2,500 feet (800 metres) have been set aside to drill the Gully Zone, a gold-copper massive sulphide body (5.3 per cent Cu, 0.26 oz./ton Au) found in 1988. The Trek claims totally surround eight two-post claims held by Silver Standard, on which porphyry-style copper of the "Galore Creek type" was found during drilling in the 1960s.

Other Pass Lake ground on which significant work has been undertaken to date includes the PL 7-13 claims (Royce Industries option) and Ginny claims (Milan Resources option) where follow-up has focused on several gold occurrences found in 1989.

#### North Iskut

Preliminary exploration is currently underway on the Bull claims under option to High Frontier Resources. The property is underlain by Lower Jurassic strata equivalent in age to the Eskay Creek succession. Several other companies are active in the general

vicinity based on the same geological analogy.

#### Telegraph Creek

Reconnaissance programs are underway or planned on numerous properties in the area, including several on Pass Lake properties under option to Sundial Resources (Rattle and Roll claims), Lorica Resources (Glen), High Frontier (Don) and Canadian Patricia (Bar, Ring and Ton). Pass Lake has initiated modest programs on a number claim groups

held 100 per cent by the company or jointly with Golden Sitka Resources. Total expenditures are anticipated to be about \$225,000 on Pass Lake properties.

Highlights from prior work include the discovery of high-grade gold up to 4.0 oz./ton on the Don group by BCGS mapping crews in 1989. The claims are underlain in part by rocks equivalent to Eskay Creek facies. □

— J.E. Christoffersen  
President,  
Pass Lake Resources Ltd.

## Ens Toyota Ltd. INDUSTRIAL DIVISION

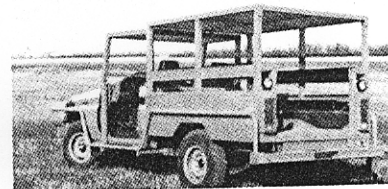
Mine Service Vehicles & Personnel Carriers  
Surface & Underground Application.

**CANADA'S LARGEST SUPPLIER OF TOYOTA  
PARTS FOR THE MINING INDUSTRY**

**Parts Direct Line  
(306) 242-0636**

**Sales, Parts & Service.  
Toll Free 1-800-667-1132**

- Diesel Power • Customized Application • Heavy Duty
- 4-Wheel Drive • Toyota Durability • Excellent Serviceability
- 1 Ton Capacity • Offroad Specs



### INDUSTRIAL DIVISION

822 - 56th St. E., Saskatoon, SK S7K 5Y8

**TEL: (306) 242-4441**

**FAX: (306) 934-1150    TELEX: 074-2869**