

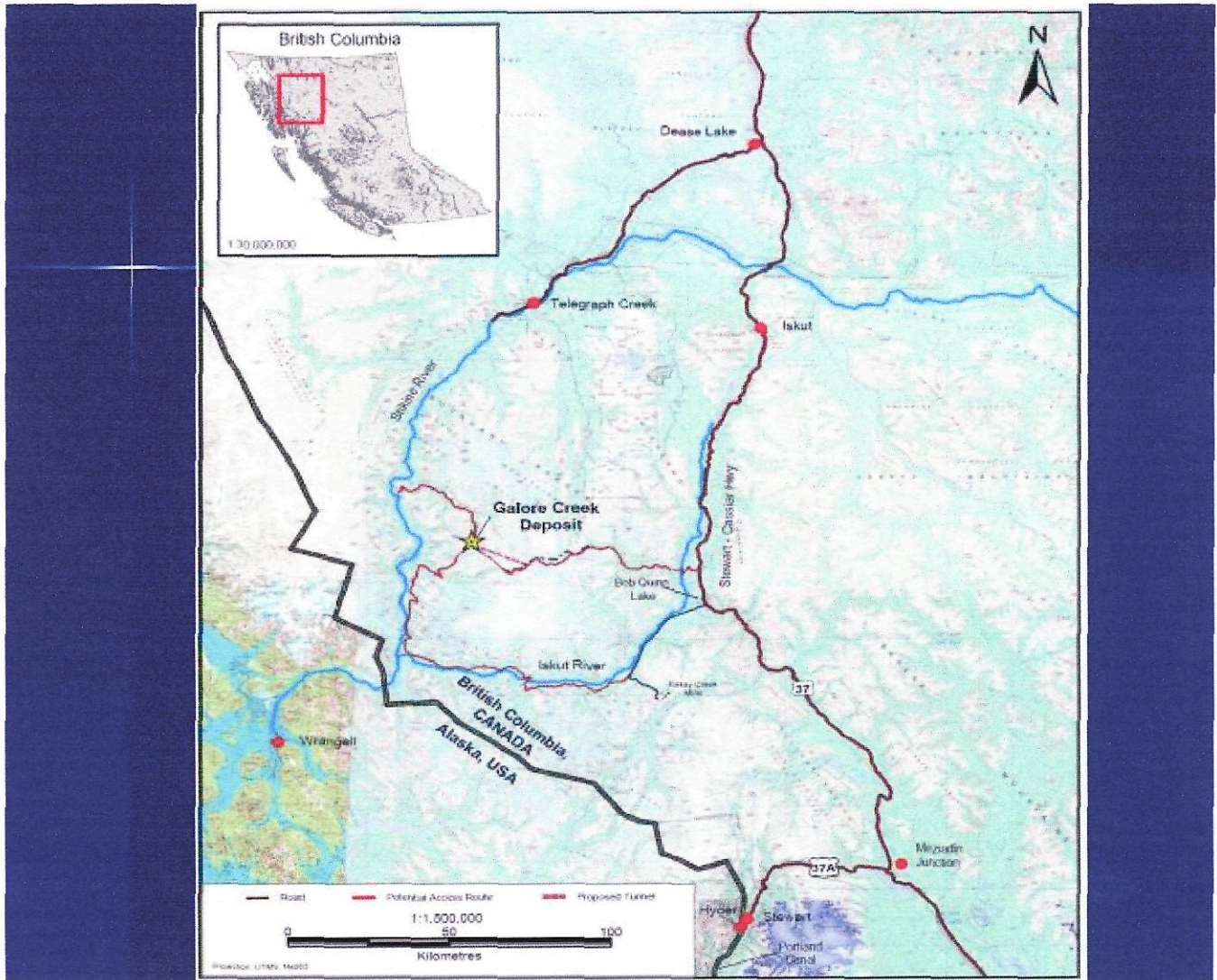


Galore Creek
Gold-Silver-Copper System

NovaGold Resources Inc.

October 2004

[First Page](#) | [Previous](#) | [Next](#) | [Last Page](#) | [Slide 4/20](#) | [Close this window](#)



[First Page](#) | [Previous](#) | [Next](#) | [Last Page](#) | [Slide 4/20](#) | [Close this window](#)

Galore Creek Activities: Sept 03 - present

- Resource update and scoping study
- 25,000m drill program
- Building relationships with Tahltan First Nation and local communities
- Discussions with BC/Alaskan Governments
- Working closely with regulators
- Baseline environmental studies underway
- 2004 budget +/- \$15 million

Galore Creek Aerial View Looking North



Galore Creek Project Timeline

- 2004 field season: drilling, technical and environmental baseline studies underway

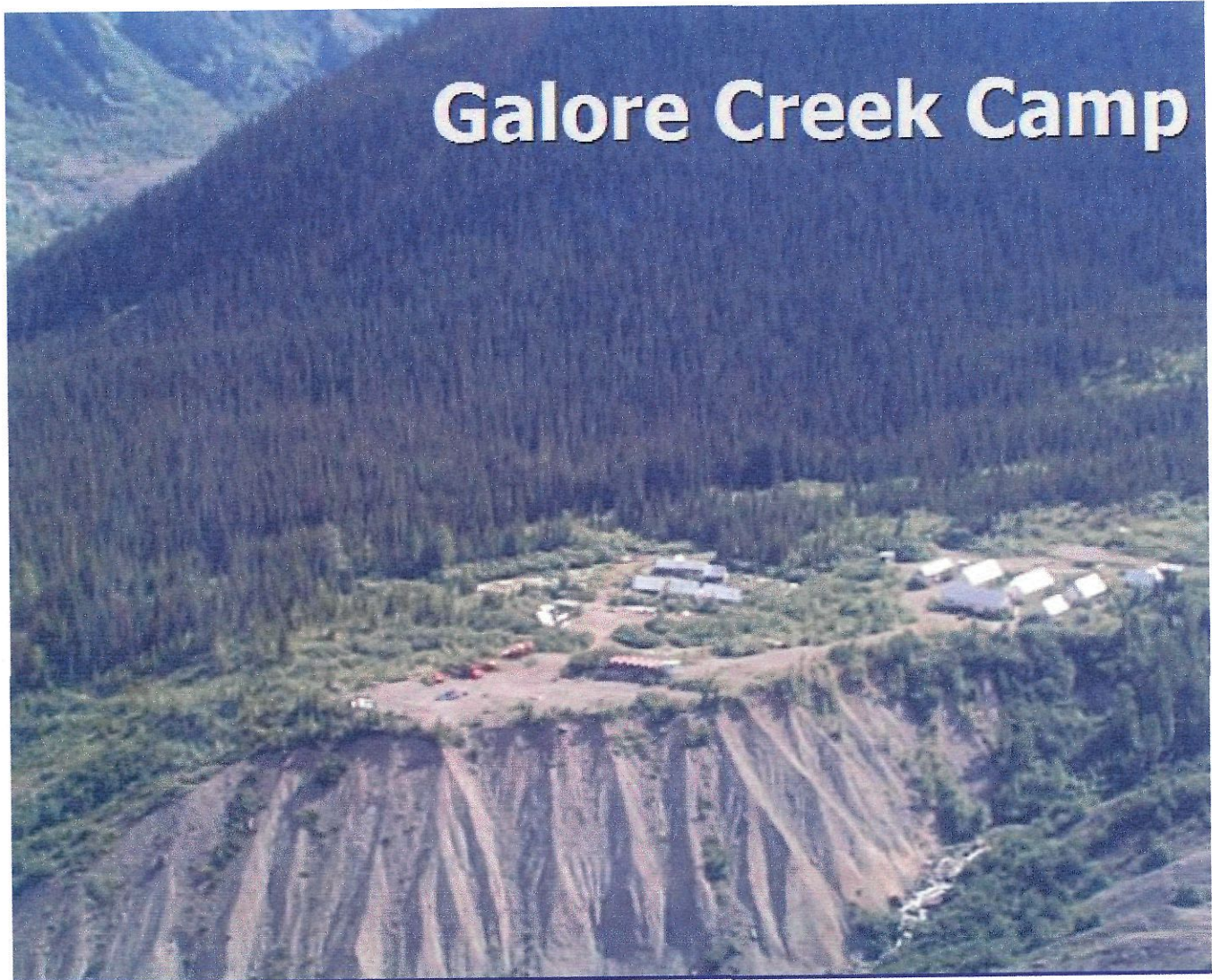
Project Targets:

- | | |
|-------------------------|------------|
| ■ Resource update | Q1 2005 |
| ■ Pre-feasibility study | Q2 2005 |
| ■ Submit EA documents | Q4 2005 |
| ■ Final Feasibility | Early 2006 |
| ■ EA/permit approval | Late 2006 |
| ■ Construction underway | Early 2007 |

Galore Creek – EA Process

- Feb 2004 – Section 10 order
- April 2004 – All agencies kickoff
- May 2004 - draft terms of reference + comments on baseline program
- May 2004 – Alaska/US meetings
- June 2004 – open house meetings
- June 2004 – Joint US/Canada meeting
- July/Sept 2004 – site tours

[First Page](#) | [Previous](#) | [Next](#) | [Last Page](#) | [Slide 10/20](#) | [Close this window](#)



[First Page](#) | [Previous](#) | [Next](#) | [Last Page](#) | [Slide 10/20](#) | [Close this window](#)

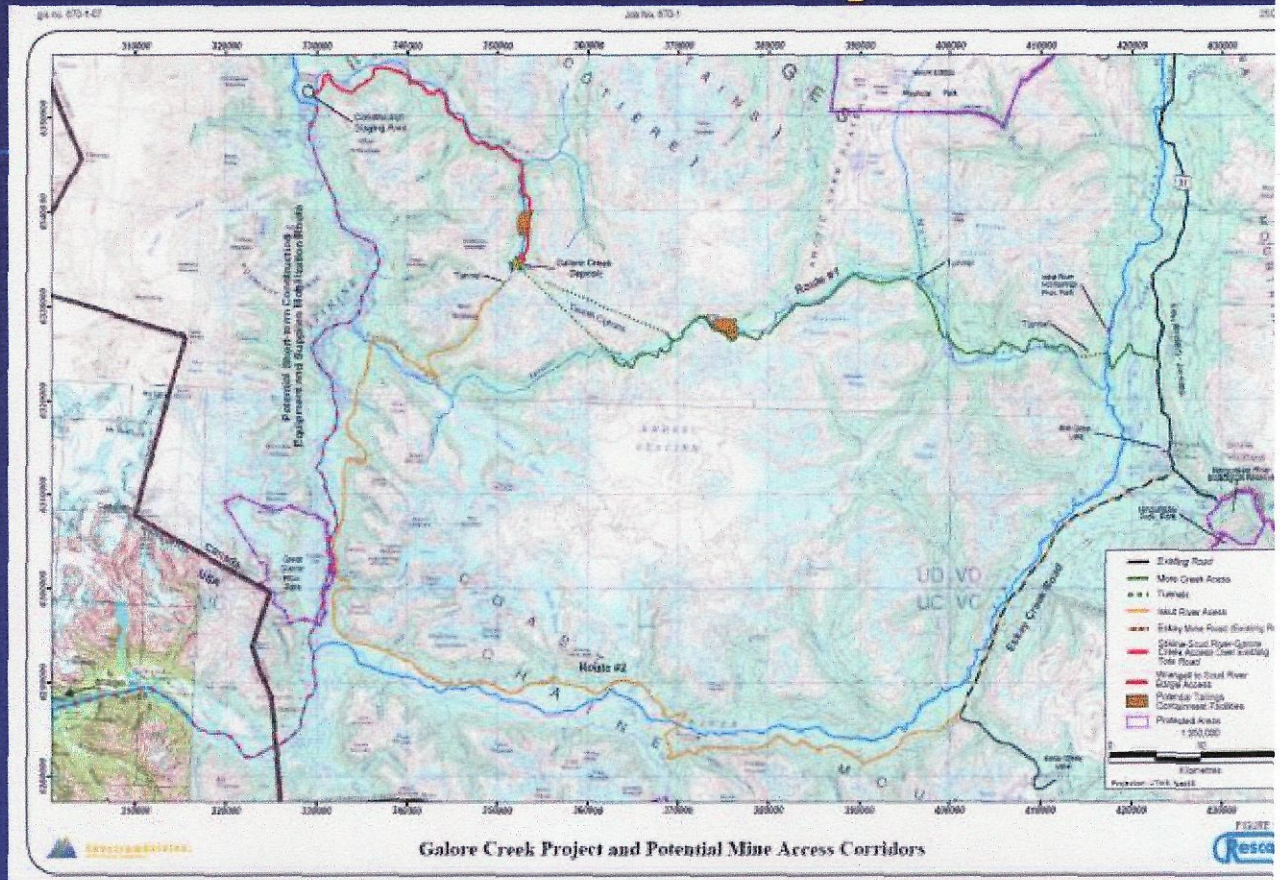
[First Page](#) | [Previous](#) | [Next](#) | [Last Page](#) | [Slide 11/20](#) | [Close this window](#)

Galore Creek Development Concepts

- Mining method: open pit at 30-60,000 tpd rate – 1.7:1 waste:ore strip ratio
- Processing: conventional copper flotation
- Product: copper concentrate w/precious metals – shipped through Stewart deepsea port
- Infrastructure: two access road options to Highway #37, link to hydropower grid (Forrest-Kerr),
- Initial Capital Cost: US\$499-621M
- Project life: >25 years based on current resource
- Employment: 400 (direct) + contractors.

[First Page](#) | [Previous](#) | [Next](#) | [Last Page](#) | [Slide 11/20](#) | [Close this window](#)

Infrastructure Options



[First Page](#) | [Previous](#) | [Next](#) | [Last Page](#) | [Slide 13/20](#) | [Close this window](#)

Galore Creek 2004 Scoping Study Financial Results: Access Comparison

All results in US Dollars

	Southern Access ⁽¹⁾	Northern Access ⁽¹⁾
After-tax NPV		
@ 0%	\$ 372 million	\$319 million
@ 5%	\$ 104 million	\$ 25 million
After-tax Payback	3.4 years	4.0 years
Project IRR		
Pre-Tax	12.6%	8.3%
After-Tax	9.1%	5.7%

1) At long term average metal prices of \$0.90/lb copper, \$375/oz gold, \$5.50/oz silver

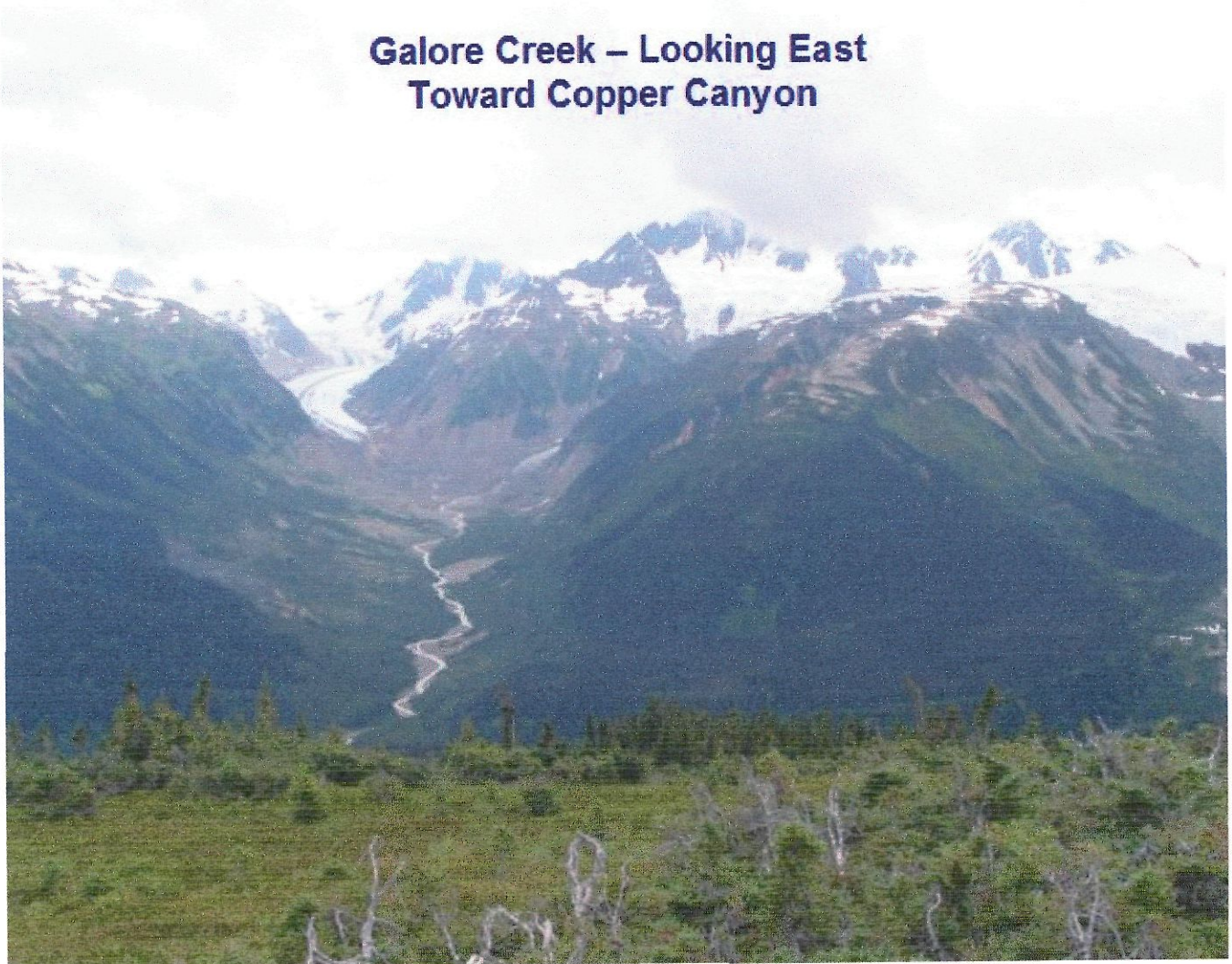
[First Page](#) | [Previous](#) | [Next](#) | [Last Page](#) | [Slide 13/20](#) | [Close this window](#)

The Tahltan First Nation – our strengthening partnership

- NovaGold has been actively engaged in a dialogue with the Tahltan since the fall of 2003.
- We have agreed with the Tahltan to work closely in project definition, to share information and plans, and to:
 - Support existing TNDC enterprises where possible
 - Encourage our key service providers to establish JV businesses and training programs with the Tahltan
 - Jointly hire a Senior Tahltan Project Coordinator and open an office in Dease Lake
 - Financially support training programs
- A formal Participation Agreement is being drafted.
- Over 50% of our 2004 field workforce is Tahltan

[First Page](#) | [Previous](#) | [Next](#) | [Last Page](#) | [Slide 15/20](#) | [Close this window](#)

Galore Creek – Looking East Toward Copper Canyon



[First Page](#) | [Previous](#) | [Next](#) | [Last Page](#) | [Slide 15/20](#) | [Close this window](#)

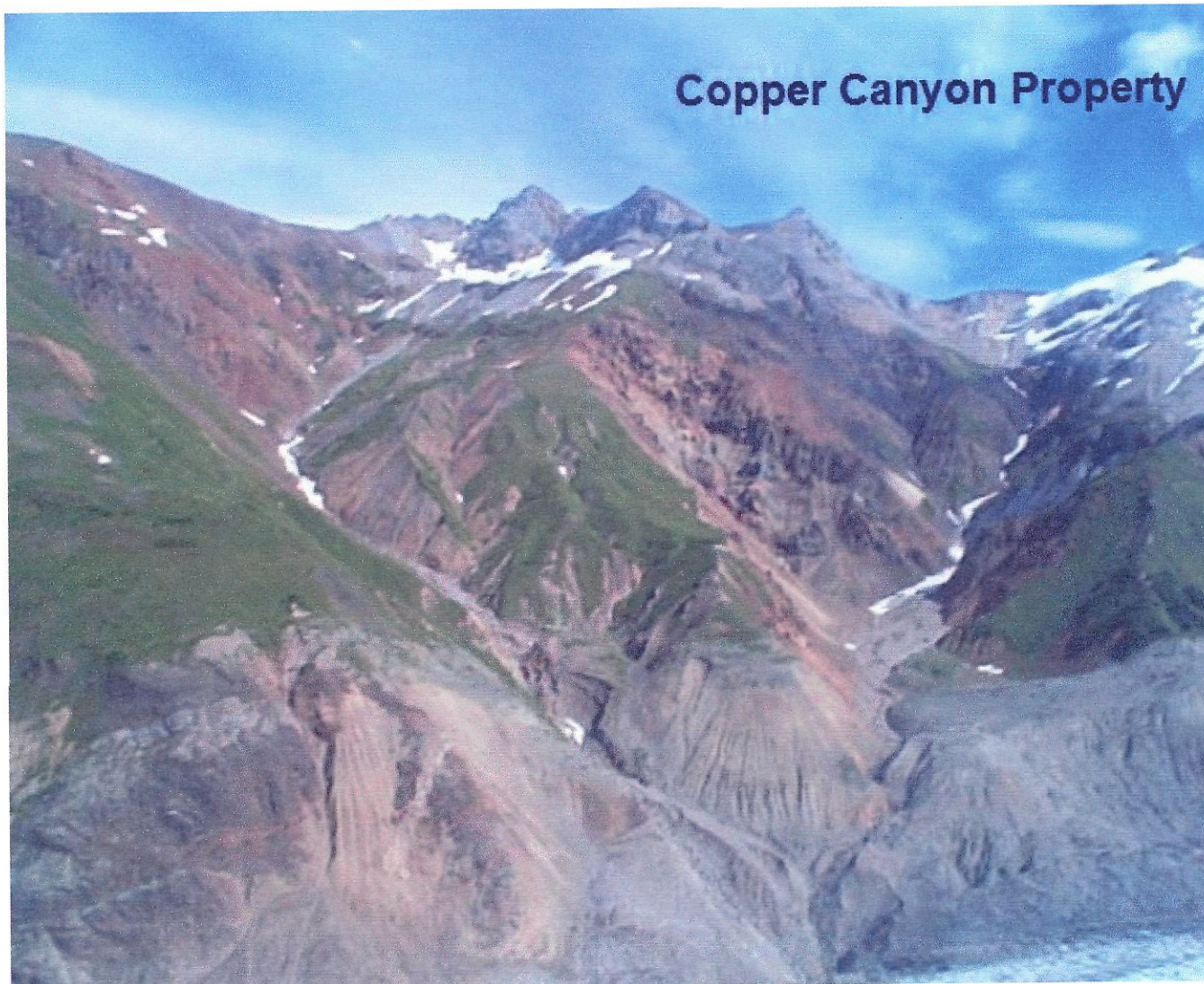
[First Page](#) | [Previous](#) | [Next](#) | [Last Page](#) | [Slide 16/20](#) | [Close this window](#)

Galore Creek - Central Zone Drill Core



[First Page](#) | [Previous](#) | [Next](#) | [Last Page](#) | [Slide 16/20](#) | [Close this window](#)

[First Page](#) | [Previous](#) | [Next](#) | [Last Page](#) | [Slide 17/20](#) | [Close this window](#)



[First Page](#) | [Previous](#) | [Next](#) | [Last Page](#) | [Slide 17/20](#) | [Close this window](#)

The Galore Creek Project Team

- NovaGold:
 - **Doug Brown** – Overall co-ordination
 - **Sue Craig** – Land use, permitting and environmental review
 - **Dean Lindsay** – Engineering studies
 - **Ann Fraser** – Tahltan Project Coordinator
 - **Scott Petsel** – Senior Geologist
 - **Jim Muntzert** – Planning and direction of field activities

- Advisors and Consultants:
 - **Rescan-Tahltan Environmental Consultants (RTEC)** – Environmental Baseline Studies
 - **Hatch Engineering** – Scoping study direction
 - **BGC Engineering** – Geotechnical and tailings
 - **McElhanney Engineering** – Road design