



DRAFT

**LEGEND**  
**Lithologic Units**

**QUATERNARY**



**TERTIARY**



Paleocene: Granodiorite, tonalite, granite

**LATE TRIASSIC and/or OLDER**



Hbl-d-bio and bio-granodiorite, and quartz diorite. Metamorphosed equivalents in Nicola horst.

**LATE TRIASSIC**

**NICOLA GROUP**



Western volcanic facies(W): mafic to felsic, plagioclase-phyric flows, pyroclastic and epiclastic breccias, tuffs. Local felsic centres (?). Eastern volcanic facies(E): mafic hornblende- and augite phyric, epiclastic breccia

**PALEOZOIC (?) or MESOZOIC**



Quartzite metaconglomerate, black mica schist.

**SYMBOLS**

★ New Discovery: Massive sulphides (sphalerite, chalcopyrite, tetrahedrite, galena, barite)

⊗ Minfile occurrences

●● Assessment Reports

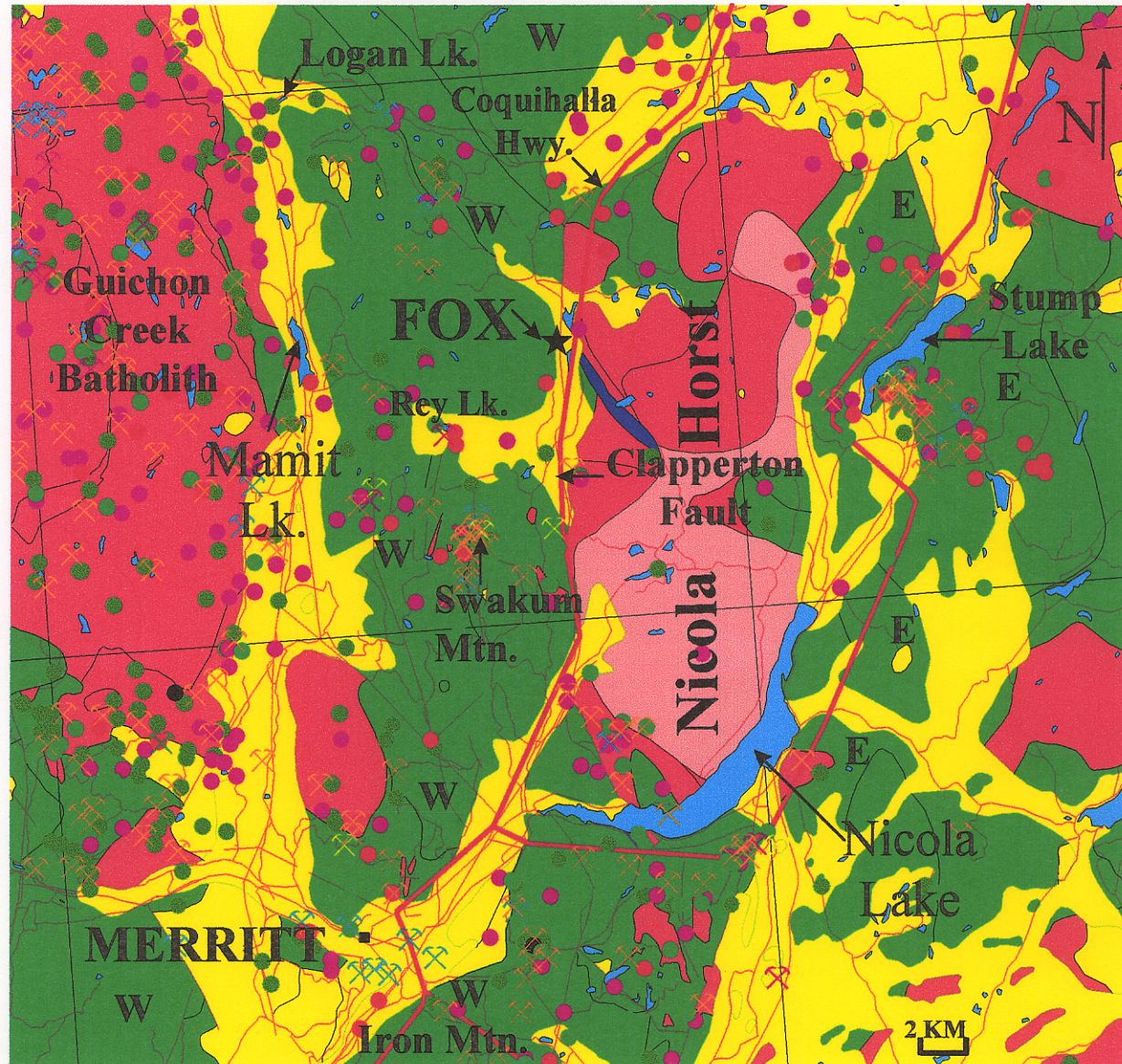
— Roads

**Sources of Information**

GSB Open File 1990-29

The MapPlace (MEM)

Vancouver Mineral Development Office



*Fox Area 'Play'*  
883135

Oct. 24, 2000