



DRAFT

LEGEND
Lithologic Units

QUATERNARY



TERTIARY



Paleocene: Granodiorite, tonalite, granite

LATE TRIASSIC and/or OLDER



Hbl-d-bio and bio-granodiorite, and quartz diorite. Metamorphosed equivalents in Nicola horst.

LATE TRIASSIC

NICOLA GROUP



Western volcanic facies(W): mafic to felsic, plagioclase-phyric flows, pyroclastic and epiclastic breccias, tuffs. Local felsic centres (?). Eastern volcanic facies(E): mafic hornblende- and augite phyric, epiclastic breccia

PALEOZOIC (?) or MESOZOIC



Quartzite metaconglomerate, black mica schist.

SYMBOLS

★ **New Discovery:** Massive sulphides (sphalerite, chalcopyrite, tetrahedrite, galena, barite)

⊗ Minfile occurrences

●● Assessment Reports

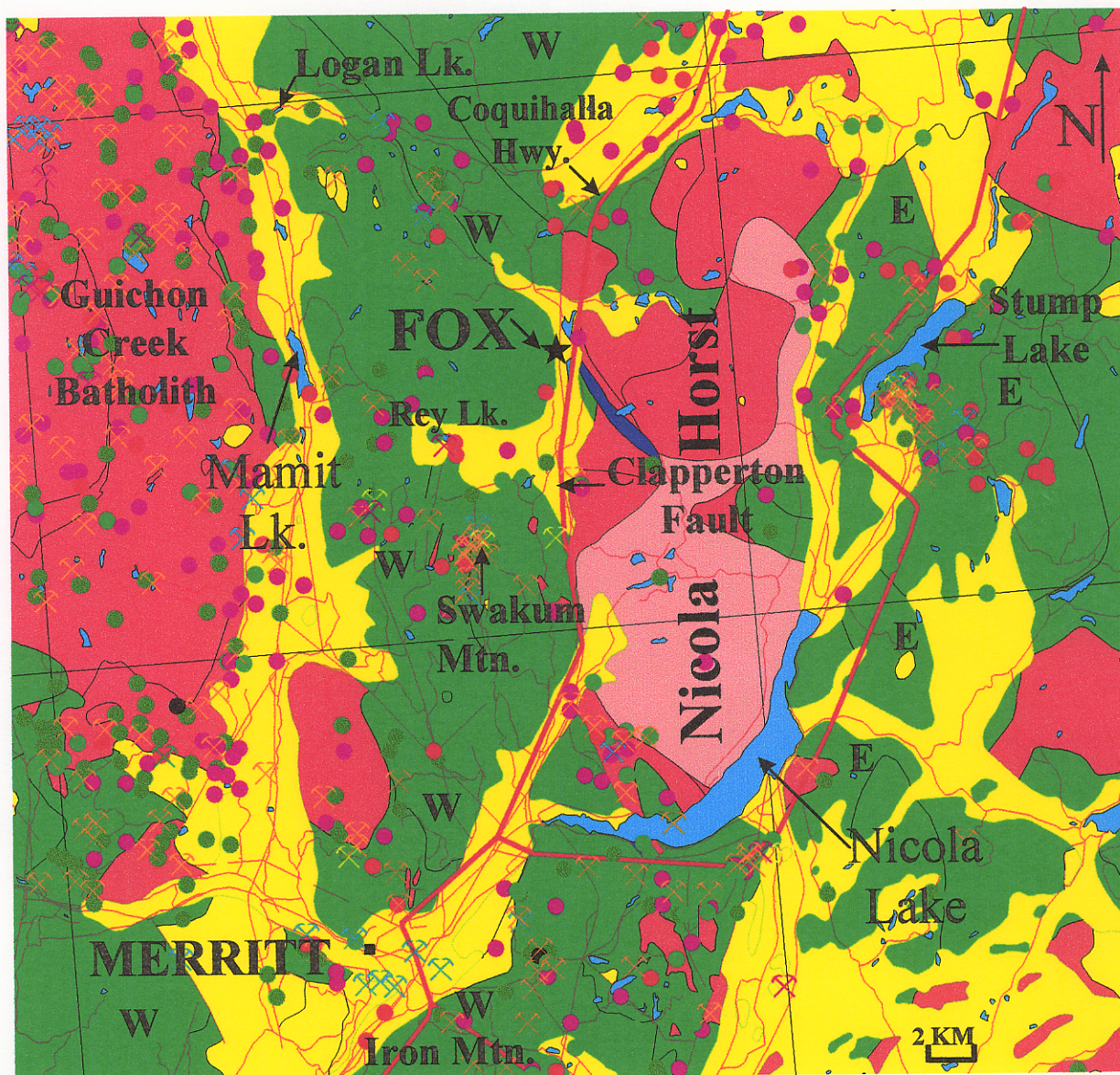
— Roads

Sources of Information

GSB Open File 1990-29

The MapPlace (MEM)

Vancouver Mineral Development Office



883078

FOX Oct. 24, 2000