

L A K E

F O R E S T

F O R E S T

P R O V I N C I A L

SATURB-5

SATURB-4

SATURB-3

SATURB-10

to Johnson

Bay

7583

7599

7615

7578

7577

7576 Pendleton

7575 Bay

7550

7579

7581

7584

7582

7580

7586

7585

6684

BLK C

6731

BLK A

BLK B

7631

Pendleton

Bay

7574

7629

Dump

Creek

7580

7586

7585

6684

BLK C

6731

BLK A

BLK B

7631

Bullerfield

Lake O.

PROVINCIAL FOREST

4000

4100

3700

3400

883062 FORT

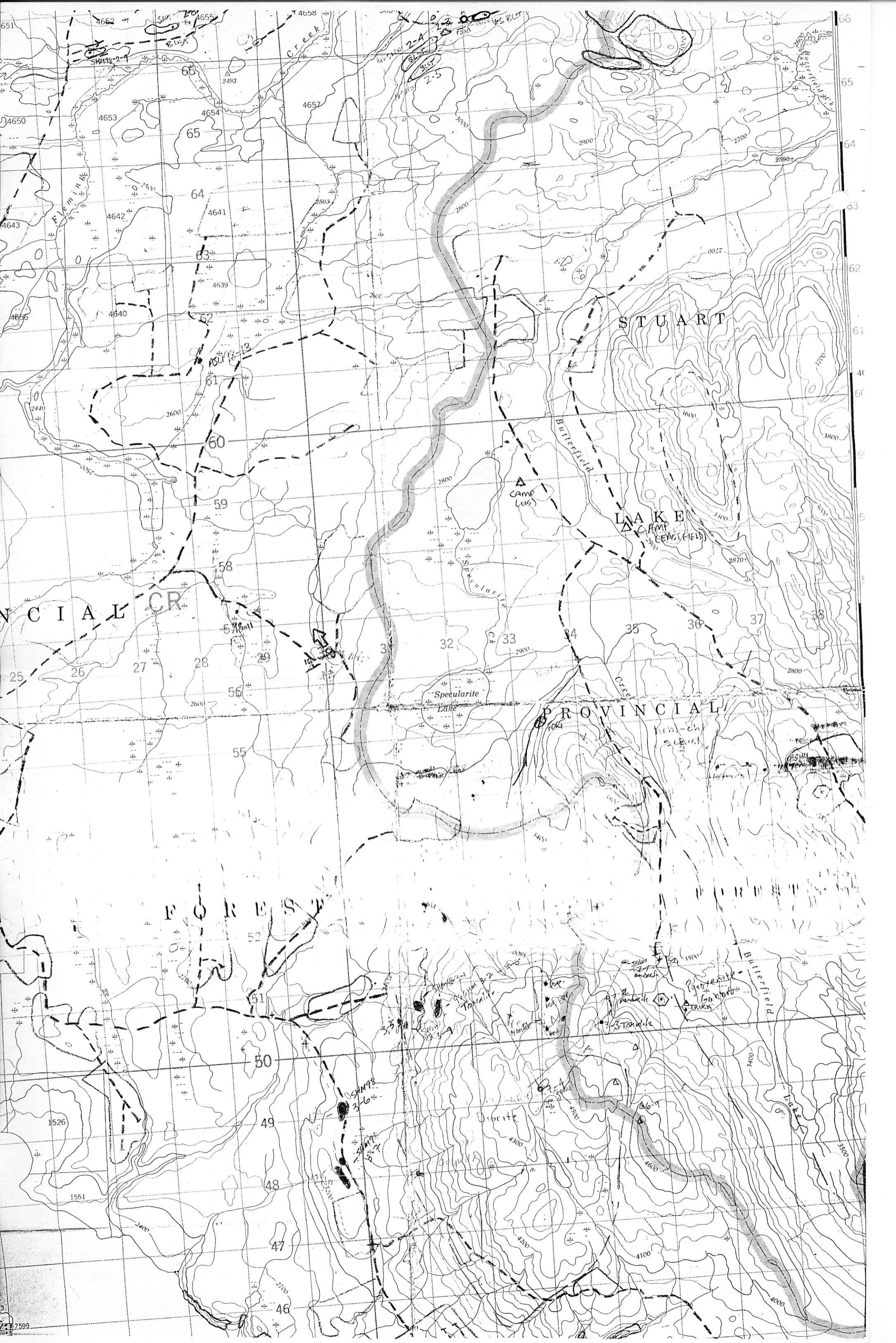
726000m. E.

125°30'

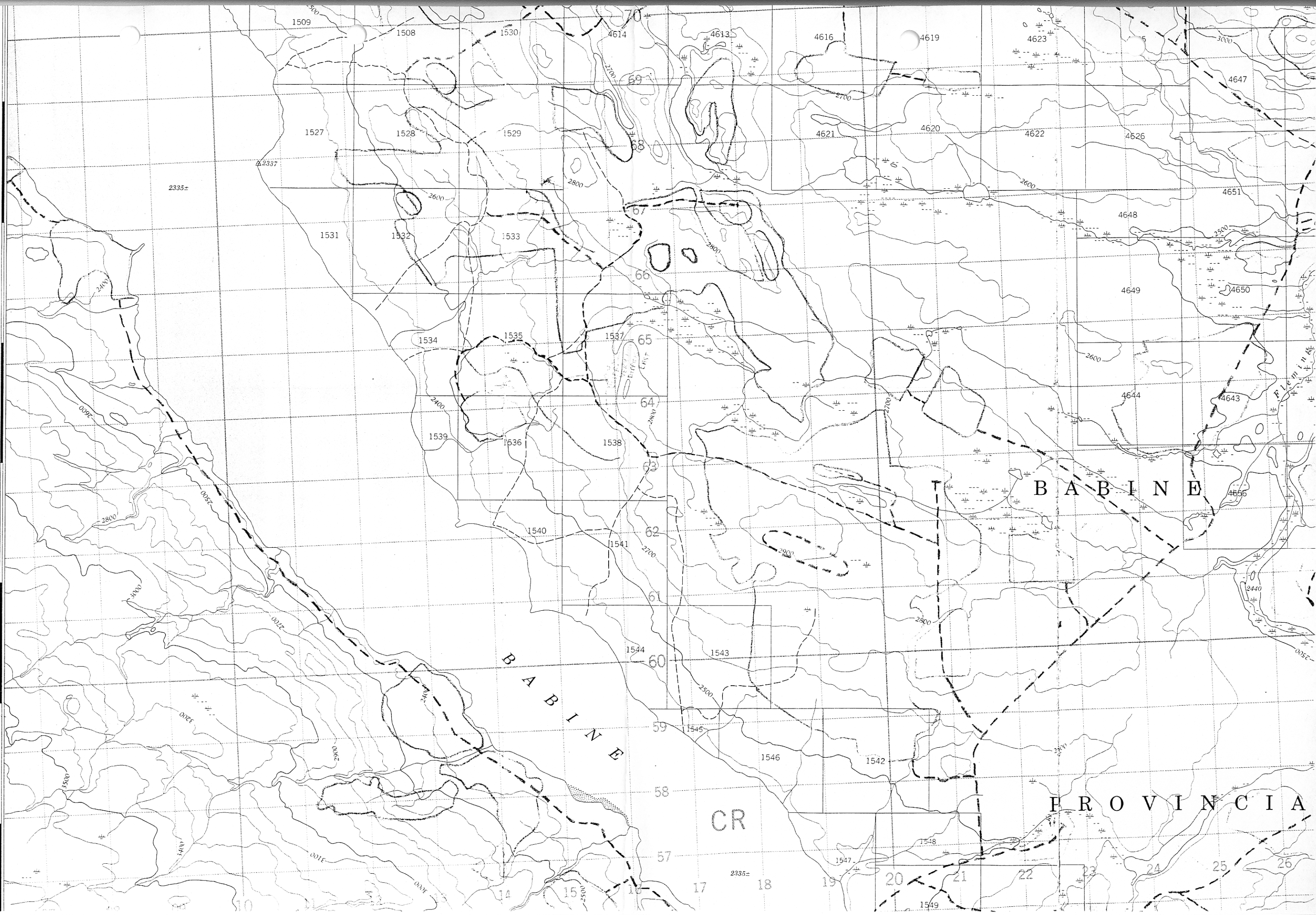
6046000m. N.
6043000m. N.

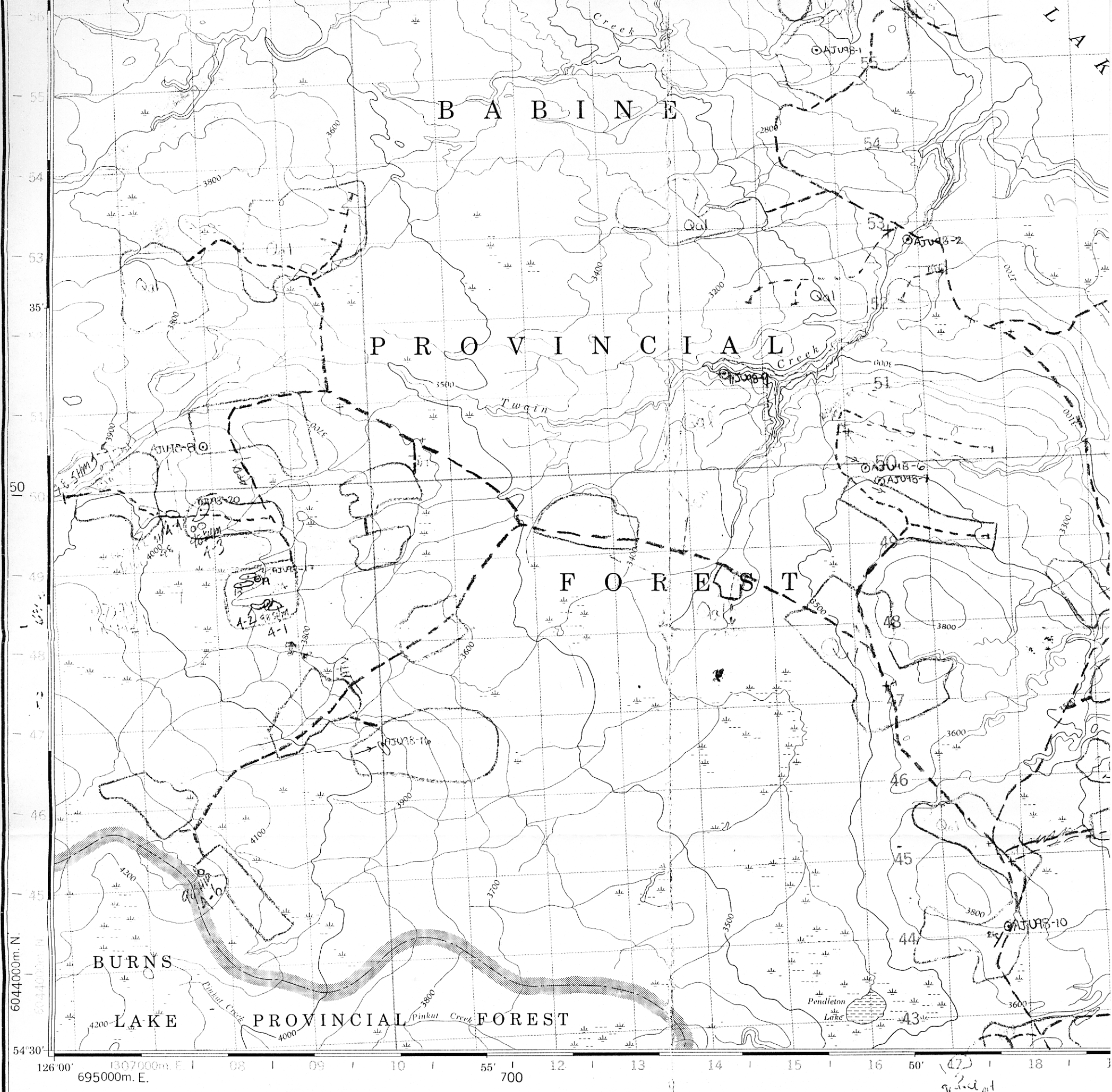
18 19 20 21 22 23 24 25 26 27 28 29 30 31 32 33 34 35 36
10 40'

Burn's Lake 37 km



6070000m. N
6070000m. N
69
68
67
66
65
64
63
62
40
61
60
59
58
57





Produced by the SURVEYS AND MAPPING BRANCH,
 DEPARTMENT OF ENERGY, MINES AND RESOURCES.
 Updated from aerial photographs taken in 1974. Culture check
 1976. Information current as of 1976.

Copies may be obtained from the Canada Map Office,
 Department of Energy, Mines and Resources, Ottawa,
 or your nearest map dealer.

© Canada Copyrights Reserved 1978

Roads:	Routes:
loose or stabilized surface, all weather	gravier, aggloméré, toute saison
loose surface, dry weather	de gravier, temps sec
unclassified streets	rues hors classe
cart track	de terre
trail, cut line or portage	sentier, percée ou portage

2 lanes or more	less than 2 lanes
2 voies ou plus	moins de 2 voies

FOR COMPLETE REFERENCE SEE REVERSE SIDE POUR UNE LISTE COMPLÈTE DES SIGNES, VOIR AU VERSO

Miles 1
 M

