

TGS → FIRE MTD.

bcMetals corporation

**London Mining Investment Mission
September 22 - 24, 2003**

Trading Symbol: C : TSX-V

#488 - 625 Howe Street Vancouver, BC Canada V6C 2T6 Tel: +1 604 683 0140 Fax: + 1 604 682 4456 Email: info@bcmetalscorp.com

Fire Mountain

882046

Tom Schwartz

bcMetals

Founders - Bob Buchan and Carl Zuber

DIRECTORS

- Bob Buchan - President and CEO, Kinross Gold Corp
- John R.W. Fox - President, Laurion Consulting Inc
- Barry Hassen - President, Hassen Technologies
- David Kotula - past President, Prophet Minerals Corp
- Doug M. MacLellan - Torch Energy Advisors
- Ian Smith - President and Chief Operating Officer
- Jay Sujir - Partner, Anfield Sujir Kennedy & Durno
- Carl Zuber - Chairman and Chief Executive Officer

bcMetals

Red Chris Mine Advisory Committee

- **Project Co-ordinator - Ian Smith, B.E. (Mining), - Founding Partner and past President, MRDI; Mining Division, Fluor**
- **Environmental Co-ordinator - Peter Campbell, B.Sc.**
- **Geology and Drilling - John Bellamy, P.Geol.**
- **Metallurgy, Plant- John Fox, P.Eng.**
- **Open Pit, Mining - Ian Smith; James Smith**
- **Mineral Reserve/Resource Audit - Gary Giroux, P.Eng.**

bcMetals

bcMetals. . .

- **Red Chris
Copper-Gold Porphyry Deposit
British Columbia, Canada**

- *Advanced project - Resources currently being
Infill Drilled for Detailed Feasibility Study in '04*
- *Measured: 11.8 Mt grade 0.85% Cu and 0.76 gpt Au*
- *Indicated: 37.5 Mt grade 0.68% Cu and 0.57 gpt Au*
- *Inferred: 28.2 Mt grade 0.62% Cu and 0.50 gpt Au*
- *\$20,000,000 spent thru 2003*

- **Fire Mountain Molybdenum porphyry Prospect - Drilling Spring '04**

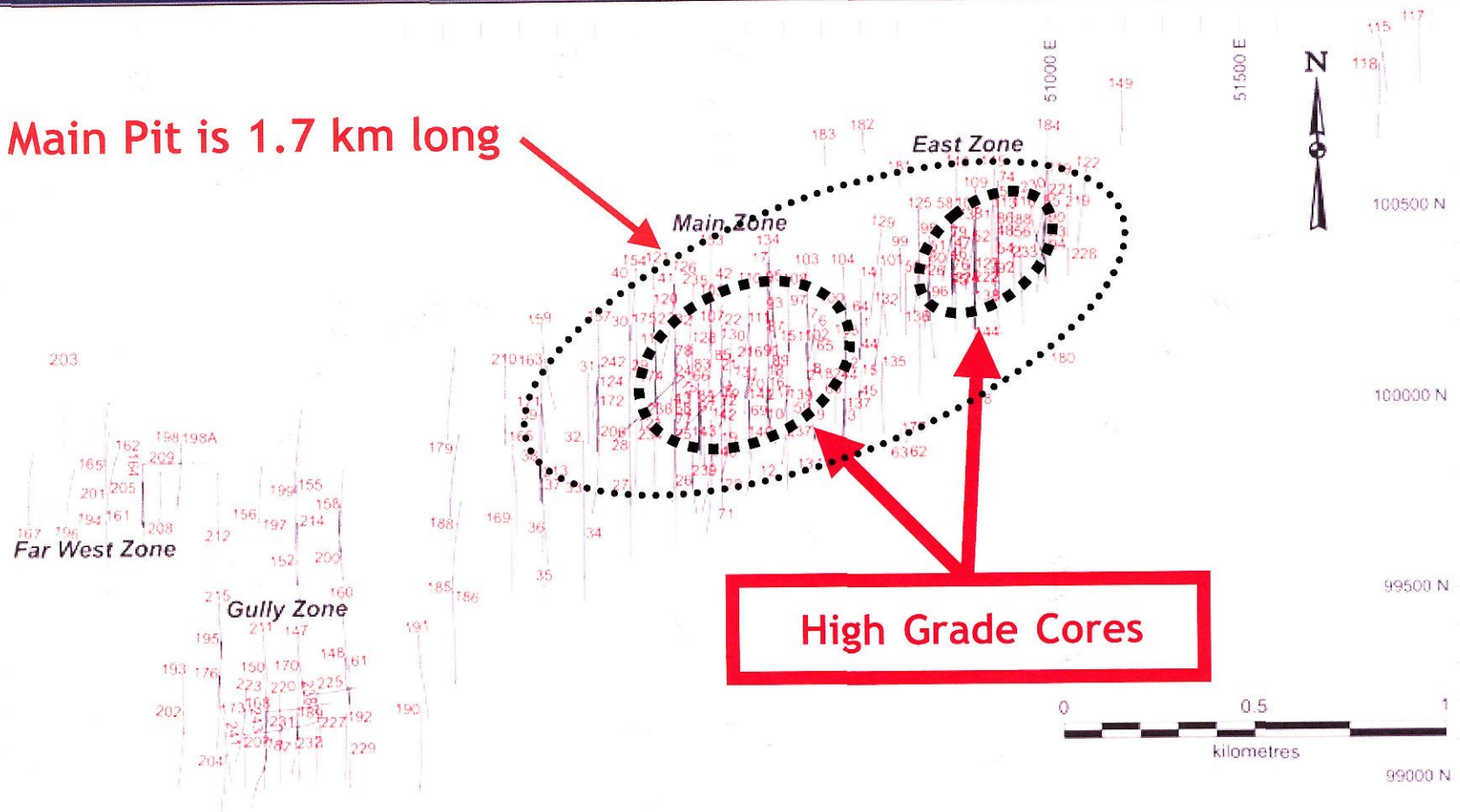
bcMetals

Red Chris: \$20 Million in exploration. . .

- *74,782m of drilling in 288 holes completed*
- *494 Mt Established Resource - 1996 pre Feasibility proposed 279,000 tpd mine with 90,000 tpd plant*
- *77.4 Mt in two high grade open pits require confirmation*
- *\$3.6M program is now drilling 41 infill confirmation DDH's*
- *Detailed Feasibility Study to commence in January '04*
- *4-year environmental base line studies*

bcMetals

Main Pit is 1.7 km long



bcMetals Corp.	
DIAMOND DRILL HOLE PLAN	
Red-Chris Property Liard Mining Division, British Columbia	
Drawn By: JDB	Scale: As Shown
Date: Nov, 2002	Figure No. 5

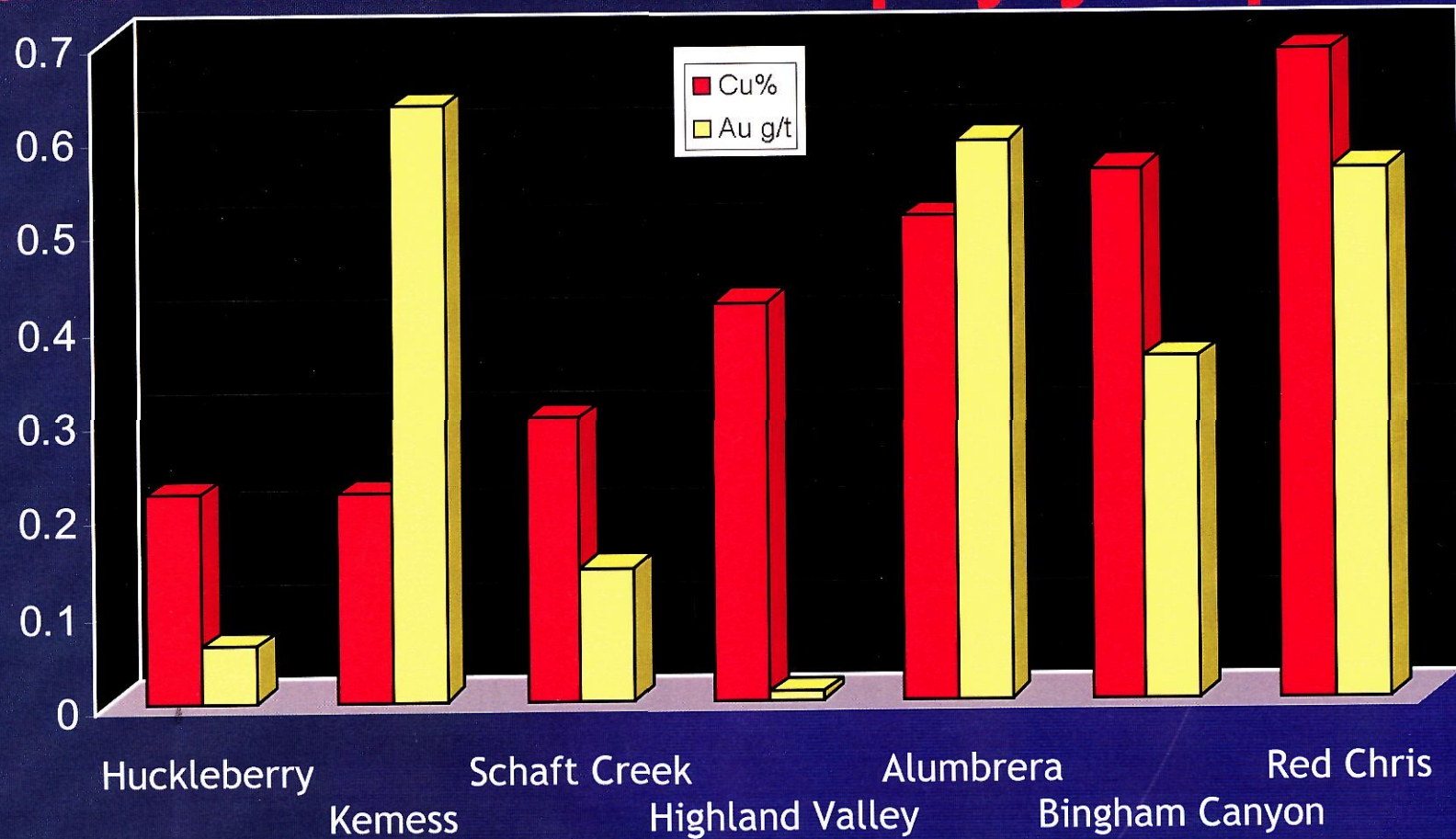
To Accompany Report By G. Giroux, P. Eng., et al., 2002

bcMetals

**Red Chris camp and location of
proposed Main Zone O/P site**



Copper and Gold Grades for B.C. and International Porphyry Deposits



bcMetals

Red Chris Acquisition Terms

bcMetals purchased an 80% interest in Red Chris for \$2,000,000 plus a 30% carried back-in and issued 2,000,000 bcMetals shares

Optioned 20% from Teck Cominco for \$300,000 plus 1.5M bcMetals shares with 1.5M warrants to buy bcMetals shares at up to 150% premium to the market when issued, 3 year term

The back-in reverts to a working interest only after bcMetals recovers 100% of investment from production

Red Chris Resources

MEASURED PLUS INDICATED				
ZONE	Cu % Cutoff	Tonnes	Cu (%)	Au (g/t)
MAIN	0.50	20,600,000	0.648	0.442
EAST	0.50	28,600,000	0.780	0.750
TOTAL	0.50	49,200,000	0.726	0.618
INFERRED				
ZONE	Cu % Cutoff	Tonnes	Cu (%)	Au (g/t)
MAIN	0.50	27,900,000	0.614	0.500
EAST	0.50	250,000	0.600	0.550
TOTAL	0.50	28,150,000	0.614	0.500

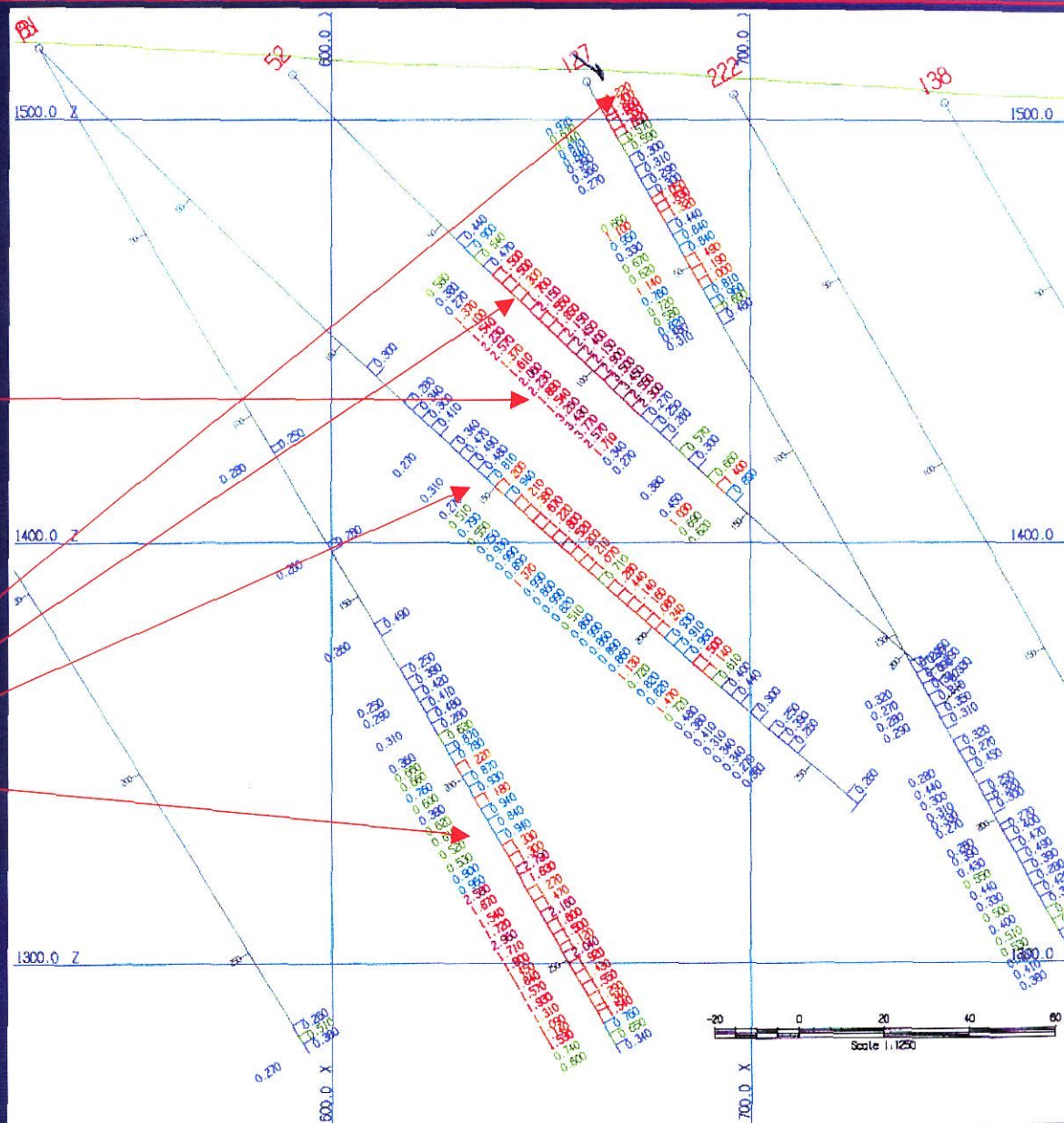
bcMetals

East Zone

1.4% Cu - 1.3 gpt Au

91.4 metres

Near Surface
High Grade Zones



bcMetals

EAST ZONE Section 50750

High-grade intersections

DDH #106

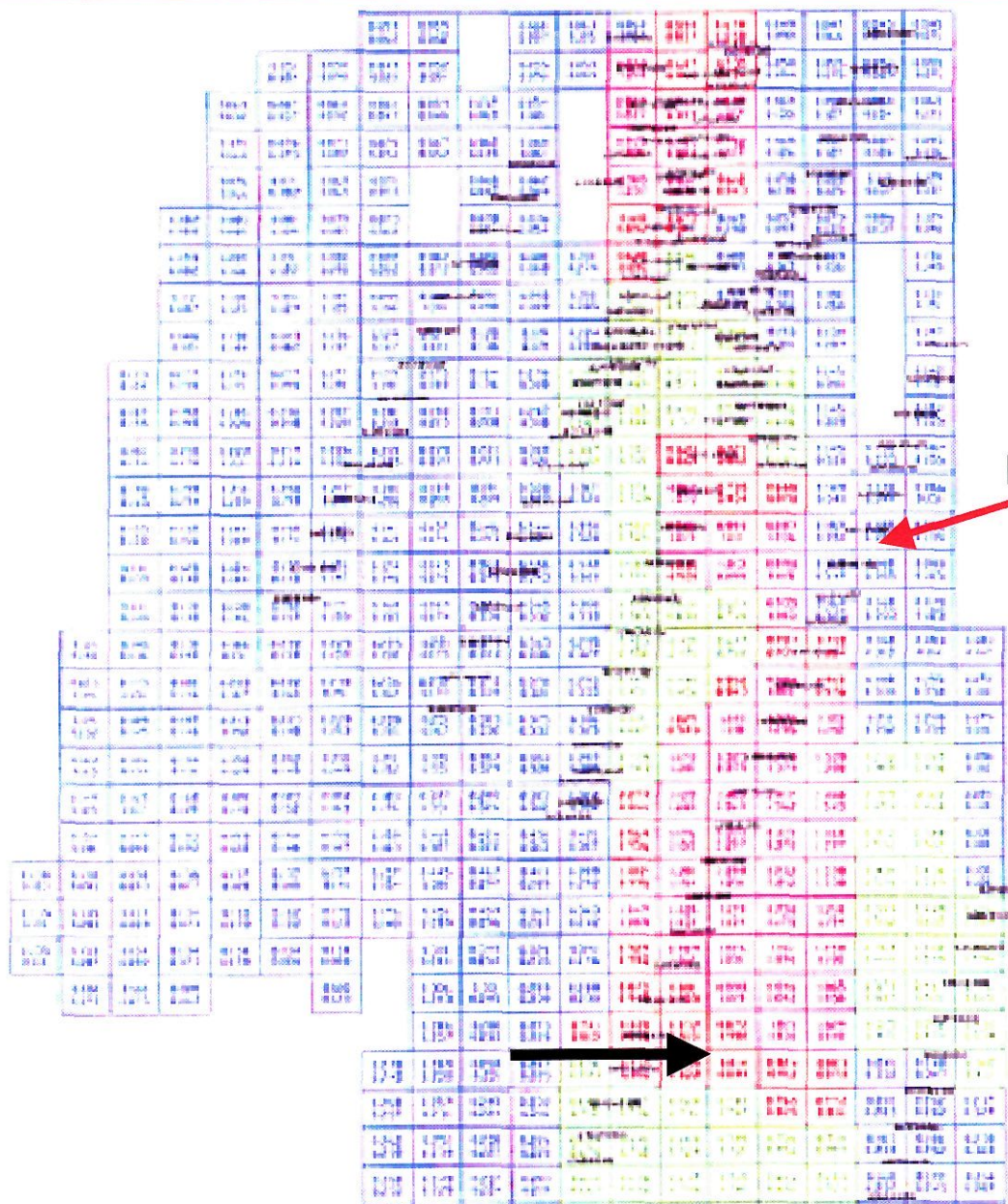
DDH #106 1% Cu - 1 gpt Au
225.8m (740')

DDH #109

.9% Cu 1 gpt Au
225.5m (739')

These are parallel holes - 60m apart.

Current infill drilling program designed to improve level of confidence



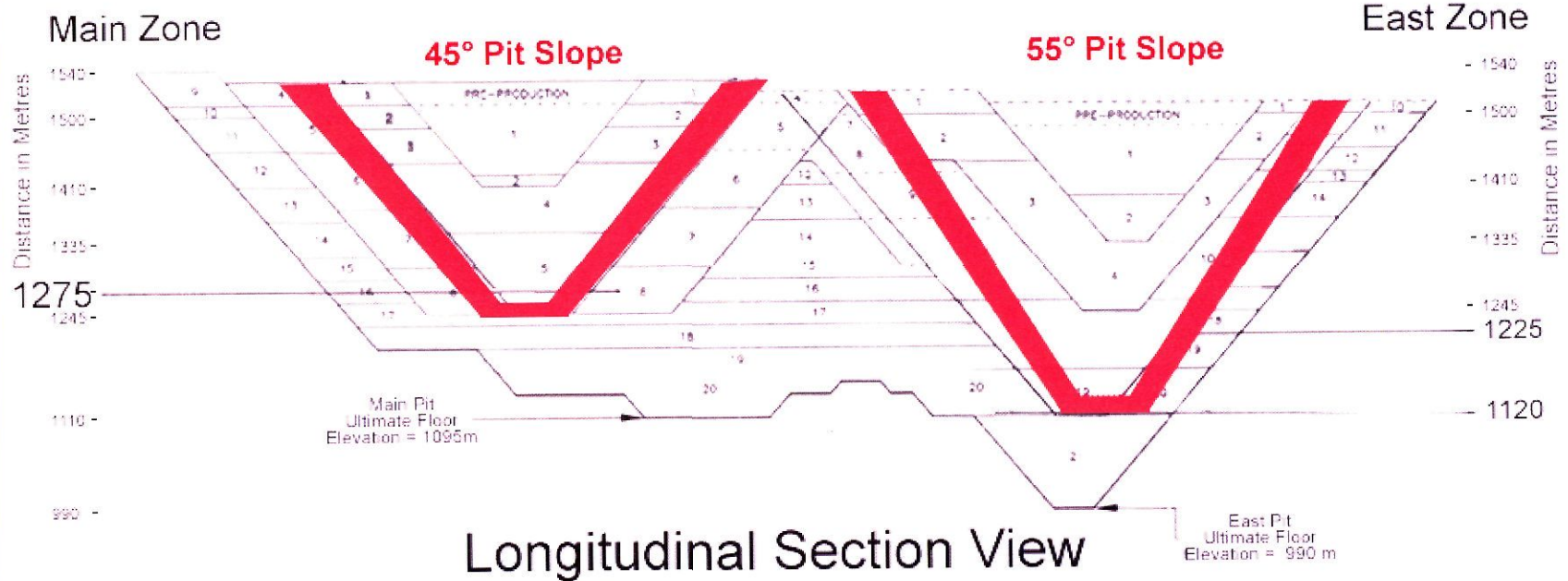
bcMetals

Bench Level	DDH #106		DDH #109	
	Cu %	Au gpt	Cu %	Au gpt
1215	1.68	2.02	1.38	1.91
1200	1.64	1.67	0.91	1.01
1185	1.31	1.68	1.08	1.07
1170	1.16	1.17	1.39	2.01
1155	1.08	0.91	1.19	1.49
1140	0.69	0.61	1.37	1.62
1125	1.07	1.09	1.06	1.08

Bottom of open pit – 105m vertical Section averages ~ 1.2% Cu with 1.3 gpt gold

2003
20,000 Metre Infill
Drill Program

A major target is East Zone
between EI 1215 - 1110m



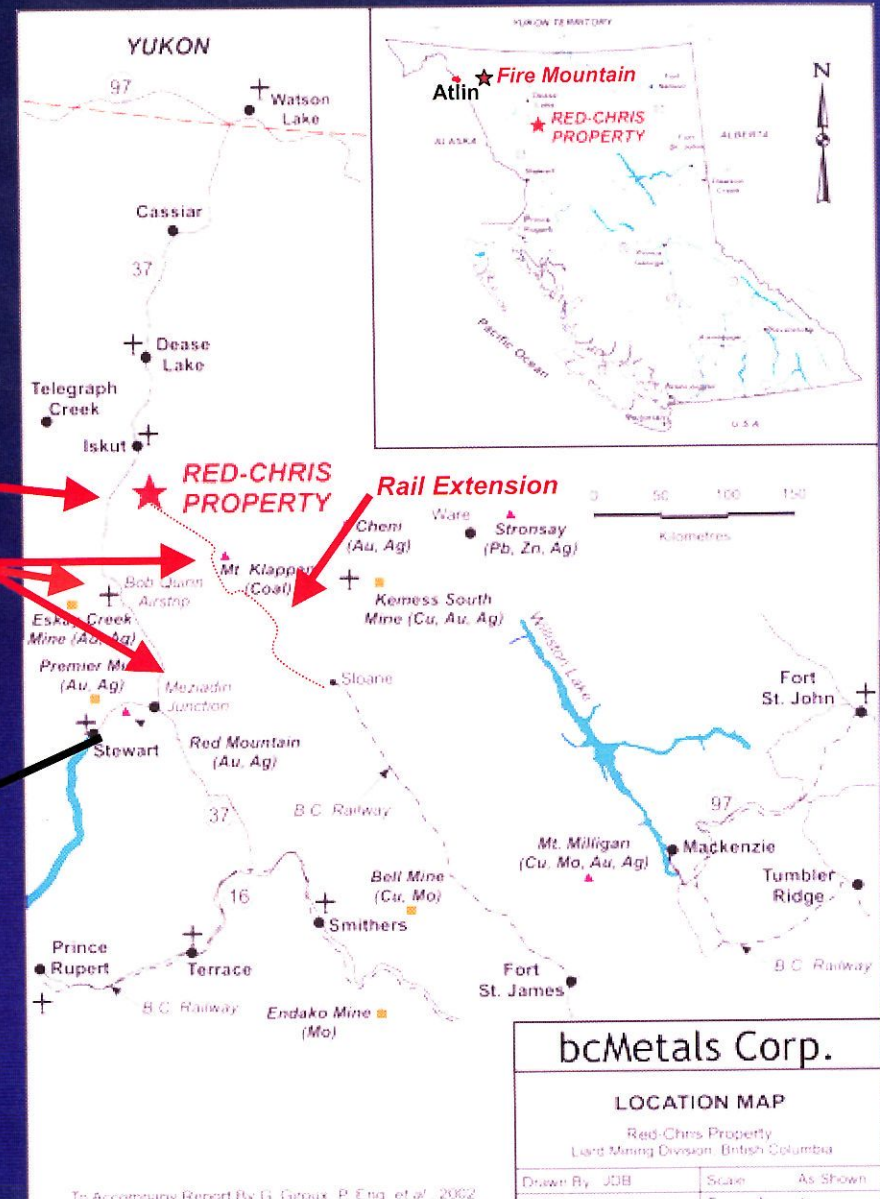
bcMetals

Available Infrastructure

- Access to property area through BC Highway 37
- Easy shipping from port of Stewart, equipped with concentrate storage facilities

Highway
Power/Hydro

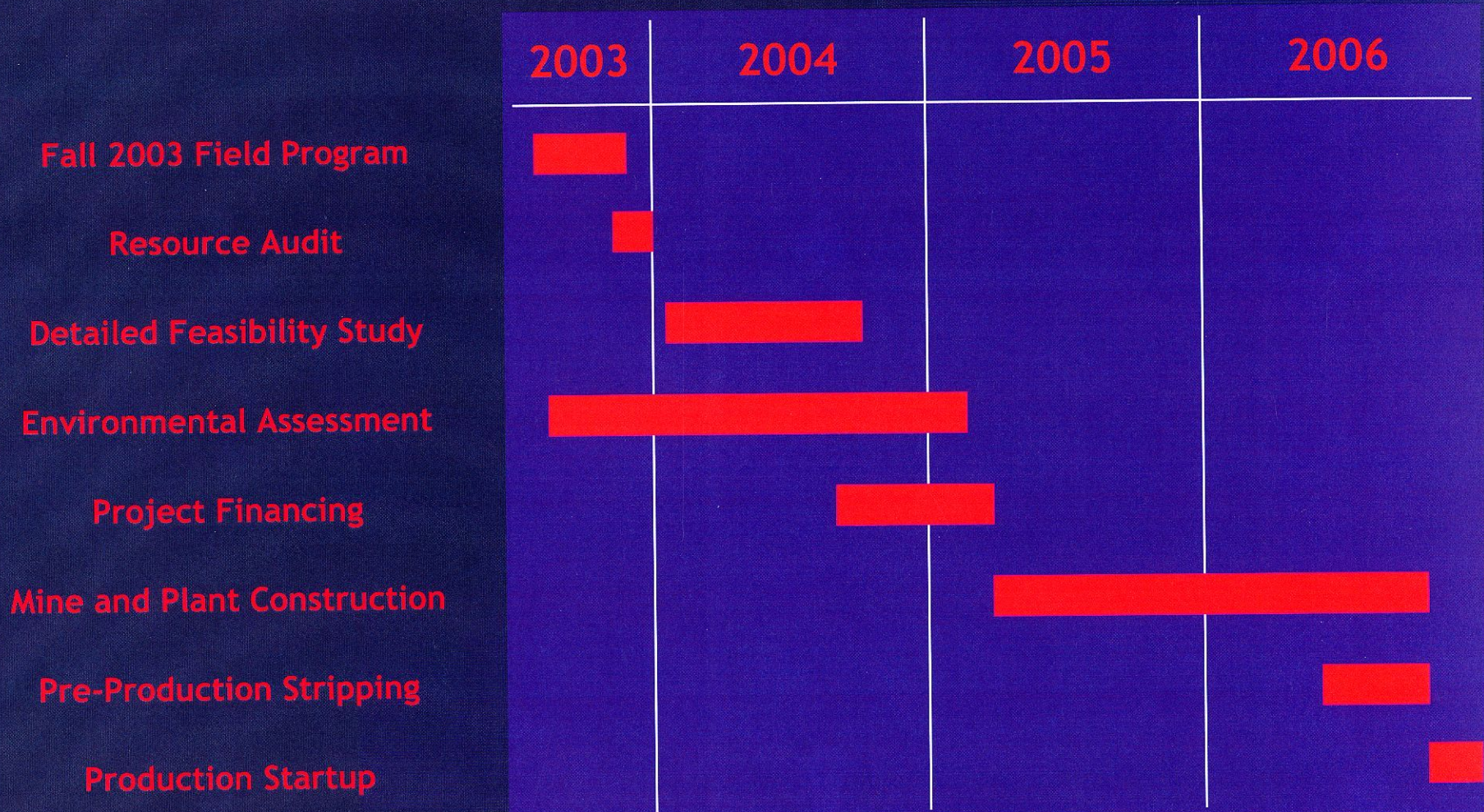
Ocean Concentrate Shipments to Japan, Korea, China, India and rest of world



Production Targets

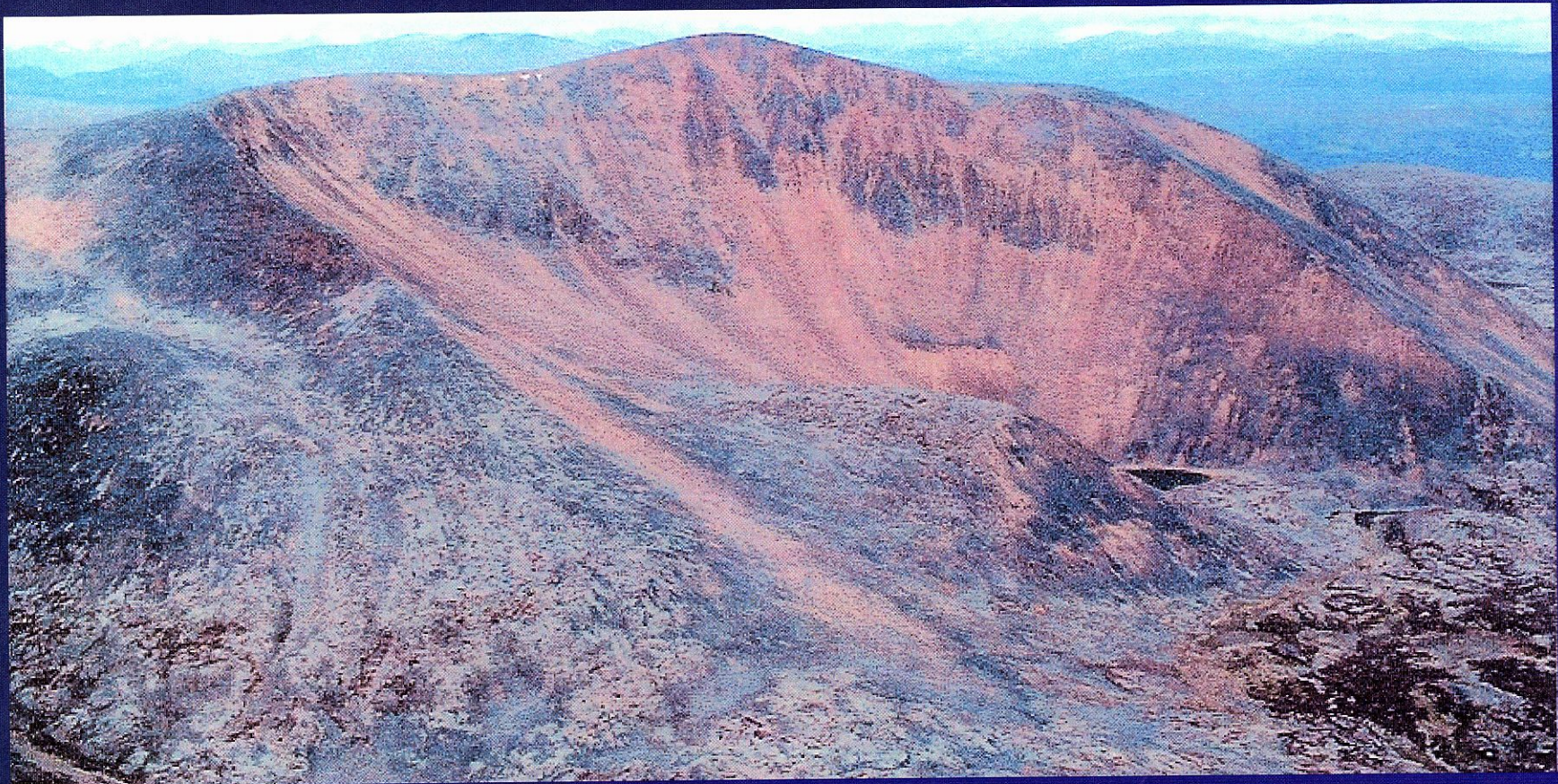
- Mill 25,000 tpd ore through standard floatation plant
- Annual production for initial nine years will average:
 - 119 million lbs of Cu with 92% recovery of Cu
 - 116,000 oz of AU with 73% recovery of Au
- Cash production cost estimate:
 - under US\$0.10 lb Cu with Au credit basis US\$0.75 lb Cu and US\$310. ounce Au
- Concentrate grade is 27% Cu and 19 gpt Au with no smelter penalties

Red Chris Development Schedule



bcMetals

**Fire Mountain Molybdenum Prospect
52 km East of Atlin – 1 km deep DDH**



bcMetals

Fire Mountain Porphyry molybdenum prospect

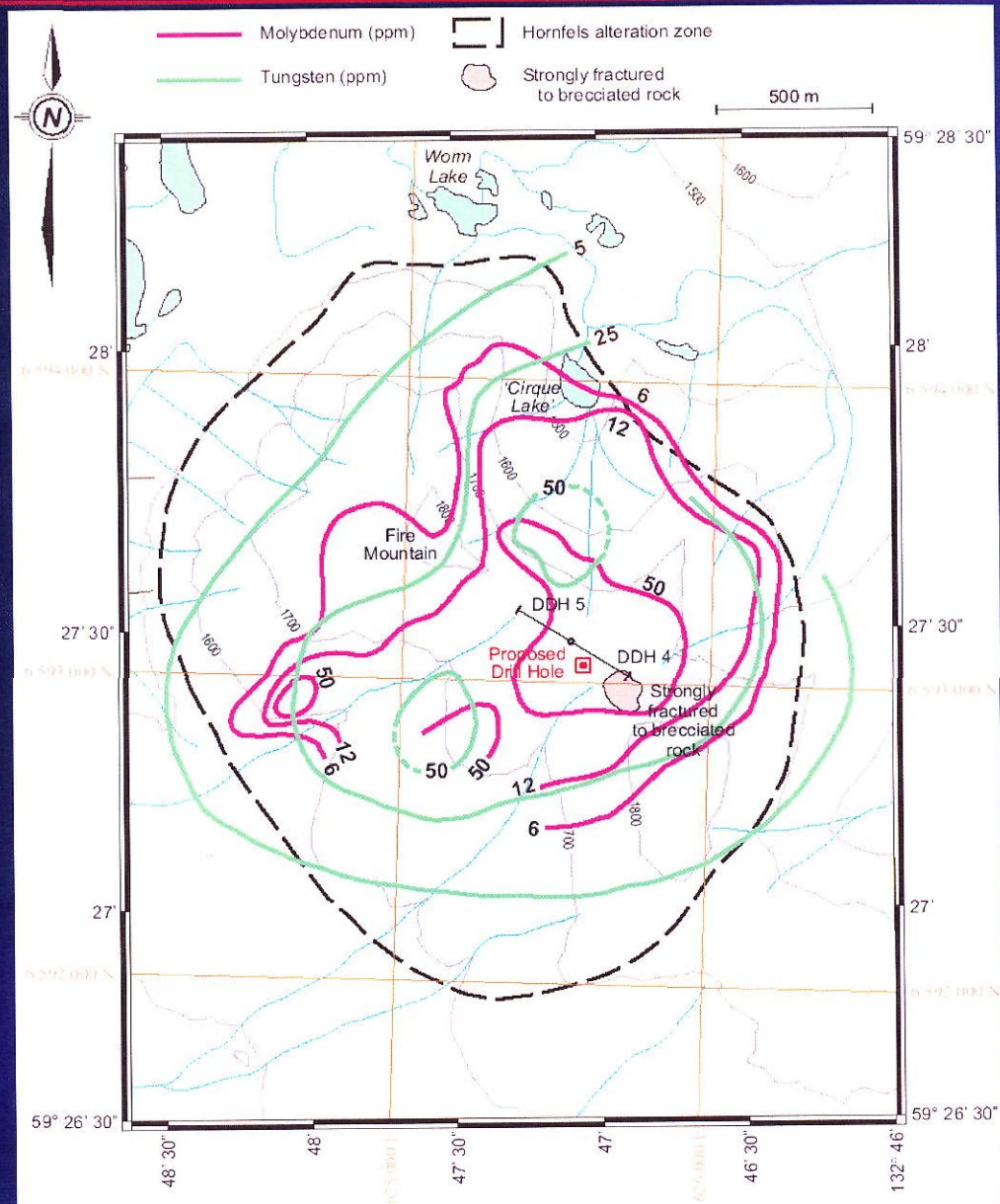
- Fire Mountain is the largest untested porphyry molybdenum prospect in America
- Drill ready, all other exploration completed
- Modeled on world's largest MoS_2 mines
- Molybdenum prices are over US\$5 / lb
- High risk - high reward exploration
- 1 km deep DDH results in Spring 2004

bcMetals

Fire Mountain

~
**Molybdenum
and
Tungsten
in PPM in
Rock Samples**

~
anomaly is two square km



Fire Mountain 1km deep DDH - cross section

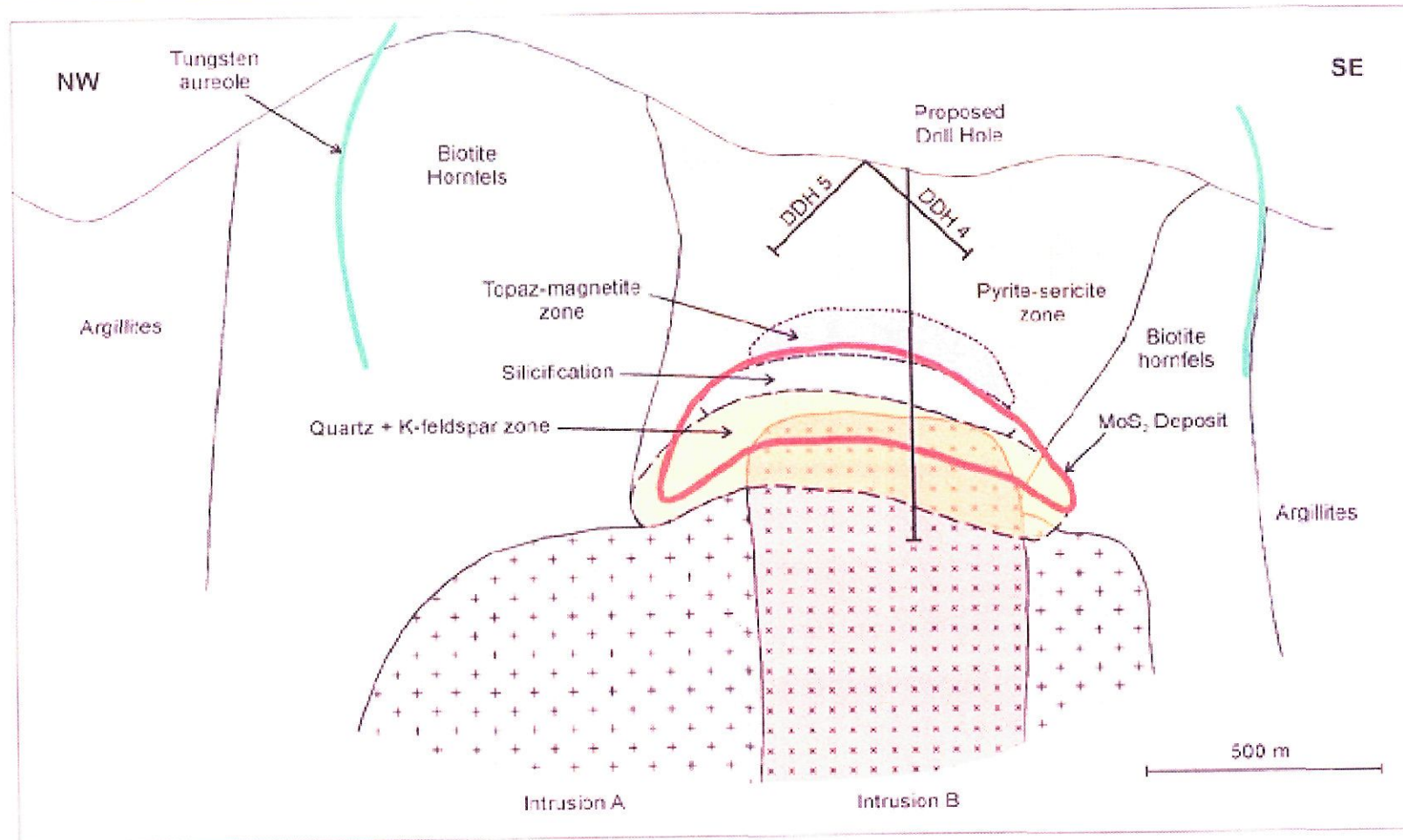


Figure 9: Fire Mountain hypothetical section NW-SE along diamond drill hole 4 and 5 section with depth to intrusion as indicated by modeled geophysical data, modified from Woodcock, 1995

bcMetals

Share Structure

Number of Shares

Management (Escrowed) 5,214,833

Free Trading 11,158,501

Current Shares o/s 16,373,334

Red Chris property shares purchases

Teck Cominco 20% of Red Chris* 1,500,000

Evanton Limited consolidation* 2,400,000

20,273,334

Options and warrants outstanding which may or may not be exercised

Fully diluted 33,534,584

* Teck and Evanton granted bcMetals 2 year and 4 year Voting Trusts respectively

bcMetals

Warrants and Options o/s

	CASH
Directors options, 1,635,000 and Teck Wts, 250,000 @ \$0.60;	\$ 1,131,000
Unit wts, 3,429,167 and Agents Wts, 1,647,083 @ \$0.70;	\$ 3,553,375
Evanton 'A' Wts 2,400,000 @ \$1.00	\$ 2,400,000
Evanton 'B' Wts 2,400,000 @ \$1.75	\$ 4,200,000
Teck Wts, 1,500,000 @ up to 150% premium on each 500,000 Shares tranche to be issued on March 31; July 31; Dec 31,2004	