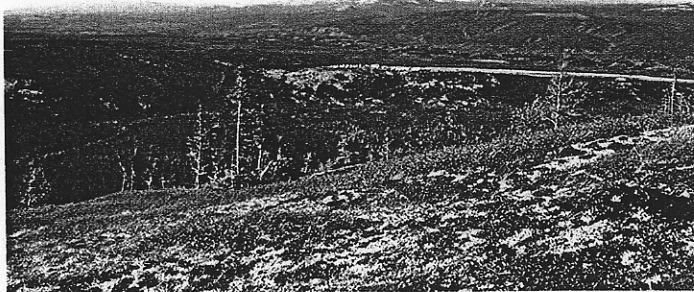


An overview of  
Donlin Creek

882942  
FIR



## Donlin Creek resources rise

GOLD contained within measured and indicated resources at the Donlin Creek gold deposit in Alaska, a joint venture between NovaGold Resources Inc and Placer Dome Inc (MJ, March 5, 2004, p11), has increased by 33% from the 2003 estimate, to 14.8 Moz.

Gold contained within additional inferred resources is close to the previous estimate of 14.3 Moz, but is calculated within a slightly larger, but lower-grade tonnage. The new resources, tabulated in full on the right, were based on a 3D model integrating 221,838 m of drilling,

using a 1.2 g/t Au cut-off grade.

Placer Dome is the manager of the JV, and currently owns a 30% interest. It has the right to earn an additional 40% by spending US\$32 million; completing a bankable feasibility study; and making a positive decision to construct a mine on the property producing at least 600,000 oz/y by November 2007.

Category	Tonnage (Mt)	Au (g/t)
Measured	16.1	2.84
Indicated	151.1	2.75
Inferred	156.0	2.72

## Enterprise deposit extended

DRILLING at Albidon Ltd's Munalu project in southern Zambia has extended the Enterprise nickel-sulphide deposit.

Some five of seven holes drilled in the southern portion of the deposit intersected mineralisation below the indicated resource.

The resource was estimated late last

Hole	From (m)	Intercept (m)	Ni (%)	Cu (%)	Co (%)	Pt+Pd (g/t)
MAD170A	337.6	8.34	2.25	0.43	0.14	1.10
MAD172A	359.1	6.65	1.24	0.22	0.07	0.87
MAD182	397.4	3.75	2.61	0.40	0.14	0.99
and	439.0	5.45	1.04	0.11	0.05	0.20

year (MJ, December 16, 2005, p10).

Further drilling is planned to test Enterprise to the north and down dip, which remain open. The continuity of the newly-discovered southern extension will also be tested.

Highlights from drilling are tabulated below:

### COMMERCE'S FIR CARBONATITE RESULTS

Commerce Resources Corp has intersected further carbonatite mineralisation at its Fir tantalum property in British Columbia. The discovery assays come from holes testing the Upper Fir zone, about 1.2 km from the main zones at Fir. Dave Hodge, Commerce's president, said results indicate that the new zone has similar mineralogy and chemistry to the Fir deposit, and may be a faulted extension.

Hole	From (m)	Intercept (m)	Ta <sub>2</sub> O <sub>5</sub> (g/t)	Nb <sub>2</sub> O <sub>5</sub> (g/t)
CF05051	69.86	20.60	210.9	2,095.0
CF0506	48.58	8.77	172.8	1,967.6
CF0508	63.09	14.51	232.8	1,450.0

### KANMANTOO COPPER INTERCEPTS

Hillgrove Resources Ltd has intersected new copper mineralisation during a drilling programme testing zones adjacent to a planned open-pit at the Kanmantoo project in South Australia. The mineralisation was discovered during testing of known targets and newly-identified geophysical anomalies. Hillgrove is considering developing Kanmantoo, and last year agreed an A\$8 million debt and equity deal with commodities trader Sempra Metals to assist the project. The better of the recent holes are as follows:

Hole	From (m)	Intercept (m)	Cu (%)	Au (g/t)	Ag (g/t)
KTRC084	157	17	2.45	0.42	7.74
KTRC093	23	17	0.83	—	—
KTRC094	19	4	1.74	0.94	8.60
KTRC021	34	37	2.89	0.34	—

### FILIPINA GRANDE IOCG RESULTS FOR LATITUDE

Initial holes in Latitude Resources plc's drilling programme at the Filipina Grande iron-oxide copper-gold (IOCG) property in Chile have intersected wide zones of mineralisation. The company's management is "encouraged" by the results, which indicate the presence of an iron-rich body overlying copper-gold mineralisation. The better of the recent results are as follows:

Hole	From (m)	Intercept (m)	Cu (%)	Au (g/t)	Fe (%)
FG-19	52	72	—	—	36.67
and	200	24	1.07	0.32	24.02
FG-15	0	126	—	—	30.00
FG-16	248	10	1.30	0.33	33.20
FG-7	214	8	2.48	0.71	10.21

### TOURNIGAN'S SLOVAKIAN URANIUM ASSAYS

Tournigan Gold Corp reports assay results from a short confirmation diamond-drilling programme at its Jahodna uranium deposit in Slovakia, a site of historical production. The holes are designed to confirm values from historical intersections in the deposit. Tournigan this week said it is raising C\$40 million (p15). The better results from the recent drilling are as follows:

Hole	From (m)	Intercept (m)	U <sub>3</sub> O <sub>8</sub> (%)	Mo (%)	Cu (%)
KG-J-1	406.9	2.4	0.24	0.04	0.04
KG-J-2	449.6	5.7	0.26	0.08	0.06



Helping you to add Value

- Stockmarket Valuations
- Due Dilligence
- Mine Design
- Pit Optimisation
- Pilot Plant Testwork
- Environmental Management
- Environmental / Social Impact Assessment
- Environmental Health & Safety Audit
- Mine Waste Disposal Design / Audit

