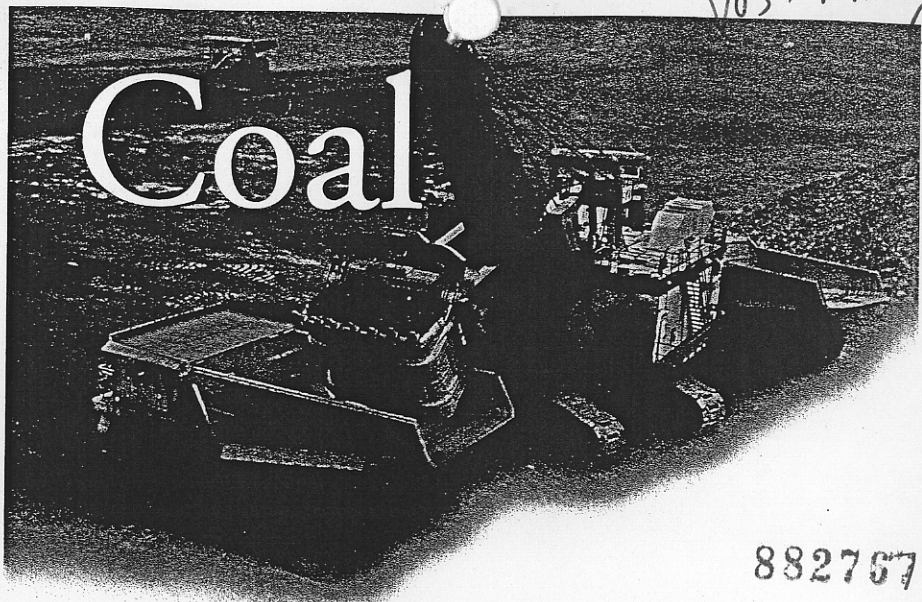
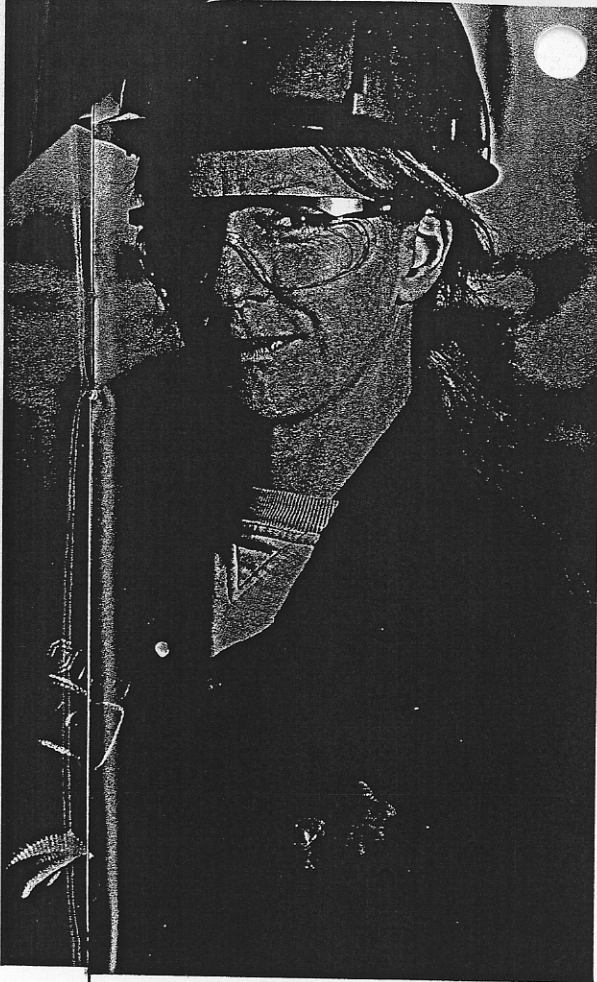


1168 → Elk Valley Coal



Coal

882767

Teck Cominco Limited is a diversified mining, smelting, and refining group, a world leader in the production of metallurgical coal and zinc and a major producer of copper and gold.

The company has a 38% direct interest in the Elk Valley Coal Corporation, increasing to 40% by 2006.

Elk Valley Coal is the world's second largest producer of metallurgical coal, capable of producing more than 25 million tonnes per year, generating annual revenues in excess of \$1.5 billion and producing about 20% of the world's supply of high-quality seaborne metallurgical coal.

accommodate the surging demand for coking coal.

Western Canadian Coal's Dillon/Brule mine project, located between Chetwynd and Tumbler Ridge, commenced production in 2004. It's the company's most advanced project and is expected to produce 700,000 tonnes of coal in 2005. The company has applied for a mining permit for its Wolverine Mine, which should start production in 2005 or 2006.

The Trend property, owned by Northern Energy and Mining, with an estimated resource of 60 million tonnes, has submitted its application for a mine permit. The company raised \$10 million in 2004 for its projects.

The two above mentioned companies have joined together to explore the Saxon and Belcourt sites, both south of the former producer, the Quintet Mine.

Cline Mining Corporation's Lossan project, 15 kilometres southwest of Willow Creek mine, is in the early stage of development. The company has an exploration budget of \$300,000 and is in negotiations

teckcominco

600-200 Burrard Street
Vancouver, B.C. V6C 3L9
Visit our website at
www.teckcominco.com

- Regulatory Expertise
- Biophysical Inventories
- GIS Mapping
- Environmental Assessment
- Geotechnical Evaluation
- Permafrost Expertise
- Earthwork Designs
- Tailings Disposal
- Remediation/Reclamation

edmonton vancouver yellowknife whitehorse calgary



www.eba.ca

CREATING AND DELIVERING
BETTER SOLUTIONS

EBA ENGINEERING
CONSULTANTS LTD.