

[EAGLE JOY]  
EAGLEHEAD

AM Tue. Aug. 15/08  
Clouds/Sun +16°C

- with Paul Wojcik + Jill Ardoo  
(Jim Reid, Pacific Western)

- DJ Drilling

- Host: Johnny Poloni (Carmax Expl'n)  
\$590k (incl. <sup>8 km</sup> road connection to main road)

Budget

Depth ~ 2200m (\$70k)

- on 4th hole on East zone  
(I planned on Barnite zone below hole #40)

(previous hole #55)

→ then on Far East zone

3-D <sup>Inversion</sup> IP survey in 2005 down to ~300m [SS Geophys]  
(previous drilling 'missed' best IP target) → 'bullseye'

East zone

eg. 60m @ .47% Cu + Mo

152m @ .454% Cu

63m @ .51% Cu (bottomed in)

104m @ .4% Cu

+ .052% Mo

> some Au showing up eg. .2 g/ton

Eaglehead  
882556  
1047008

East Zone target ~ 100m west =  
(hole @ 150m)

01H #55: 6.87% Cu over 6.3m  
1.23 g/t Au

East zone  
06-60A eq. 0.41% Cu - 18m  
0.41% Cu - 11m  
average ⇒ .5% Cu over 138m

Far East Zone - 5 lines 3-Ø IP  
- plan 2 ddh - target 'bullseye'

- see new (2006) Ass. Rpt.

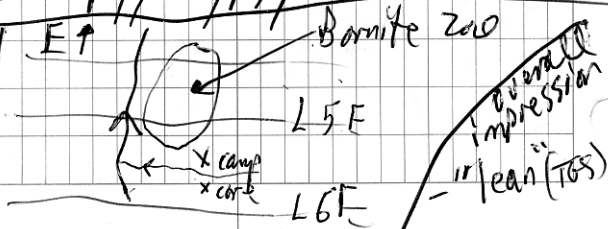
Core Photos: Hole #06-63  
no core racks (just stacked); no sawing

Host Rk.: Granodiorite + Qtz 'eyes'

Alt'n: ksp + saussurite

ore: cpy/bn/py/mo<sub>2</sub>

Land at  
drill site  
on East  
zone  
(valley)

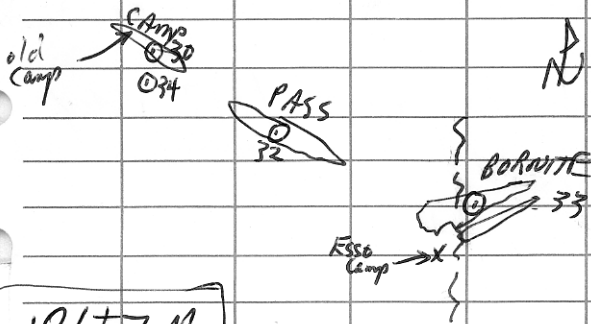


MI 1041 008

# EAGLEHEAD

Sept. 9/96

- with Wojdak



$186 \pm 7 \text{ Ma}$

- soda-rich intr. phases; calc-alkaline

Bornite Zone ← east of 6.3m @ 7.13% Cu  
in massive cpx + minor br.

- strong k-spar-sericite alt'n

[Note: Ref. - CIM SV 46,  
pp. 467-472]

Geol. Resources:

Camp Zone:	2.72 m tonnes @ 0.45% Cu
Pass Zone:	11.8 m tonnes @ 0.52% Cu
Bornite Zone:	16 m tonnes @ 0.65% Cu eqwt (+1%)

examine Esso 1976 camp  
+ core area - rocks. Galley  
over (but salvageable)

- stop at "west" (1973) camp  
+ core - worse shape needs  
cleanup.

Apr. 13/02

EAGLE HEAD

- 'open'  
(Dick Billingsley)

EAGLEHEAD

Aug. 21/76

76-30 30 → 1012

(7)

76-31 41 → 602

76-32 20 → 507

76-33 40 → 617

76-34 80 → 590

---

Mon. Aug. 23/76

Eagle Property  
(Imperial Oil)

AH'd QM to get eye  
with cpy + bn + MoS<sub>2</sub> in  
shears.

76-30 Flt'd GO → QM (2)

str. alt'n - sauss + chl.

at ~ 400' - compl. sauss. QM + minor  
with gtz eyes PY

- mag. blebs

~ 600' - increase in Kspar alt'n  
with corresp. decr. in sauss

635-665 - volc. inclusions?

→ QM

---

76-31 Same as 30

100 → 126 - Strong

Sauss alt'n + minor  
frac  $MoS_2$  + PY.

170-185 - Strong Kspar + chl alt'n  
PY

290-7299 Well min. (cpy)

Sheared (flt'd) QM

Minor  $MoS_2$  smears

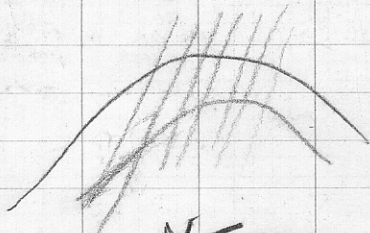
436 - ~~476~~ Frac. + gtz vein cpy

mod. sauss. + Kspar. (Not flt'd)

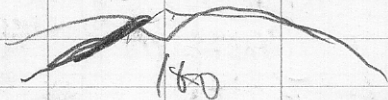
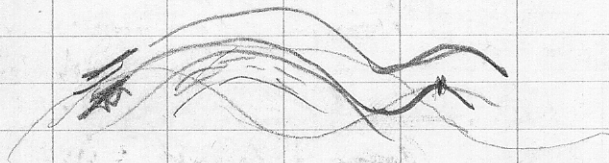
→ stronger chloritic alt'n

521 → 530 cpy in frac in gtz eye QM

KC East - creek showing.



N ←



76-31 (cont'd)

(B)

530 → 553 Kspar alt'd  
zone + cpy in gtz veinlets

---

76-32 Fn. gr. di. with  
barren gtz. veinlets

114' - Fault<sup>(shear)</sup> contact with "QM" <sup>typical</sup>

137' → Typical Kspar alt'd  
gtz eye QM

475-497' - Lt. brown intr. dyke

497' → Alt'd QM

- minor cpy assoc. with  
chl. alt'n (shear)

---

76-33 Good QM (lacks  
gtz-eye  
look)

402' - cpy + mag in frac.  
in Kspar-rich QM

361-365 - Shearing with MoS<sub>2</sub> smears

342-360 - cpy + bn + shear MoS<sub>2</sub>  
in Kspar-chl.-rich alt'd QM



588-597 - Minor frac. cpy + MoS<sub>2</sub> in kspars + chl. alt'd QM

563-588 ↑ good min. section of cpy + MoS<sub>2</sub> on frags. in kspars - chl. alt'd QM

542<sup>1-563</sup> - Mag + cpy + bn + MoS<sub>2</sub>(frac) - dissemin in kspars-rich

521-542 - Good sec. of frac. cpy + bn + MoS<sub>2</sub> (best yet) in kspars + chl. alt'd QM

497' > 10% over 2 to 3ft. → cpy + MoS<sub>2</sub> in frac. in chlorite rich flt'd

478' - 499' - Good cpy + MoS<sub>2</sub> min

600  
34  
560  
Min zone = 342' to 602' ~ 260ft.

76-34 Fr. gr. flt'd dio. with minor dissem. cpy - minor QM dykes only trace cpy.

556 → 579 Typical alt'd QM with frac. cpy + MoS<sub>2</sub>

QM 320 LY-2011-05-15-10:00 525-535 - cpy + MoS<sub>2</sub> in glt vein