

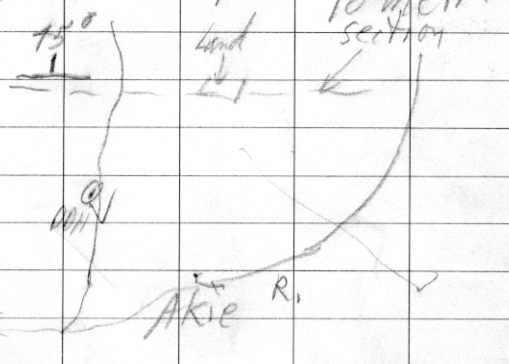
July 29/80

# CYPRUS ANVIL AREA ①

Cirque  
881772

800718  
94F/11E  
94F008

- pic. of iron seeps east of ELK
- ELK prop.
- visit (showing up on ridge)
- drill in ckt.



[Note: Revisited  
July 23/96]

- 10 m bed of PbS + grey barite  
in Dev. shales

- stop at BCMM camp on east  
side of Pretzle Ck.

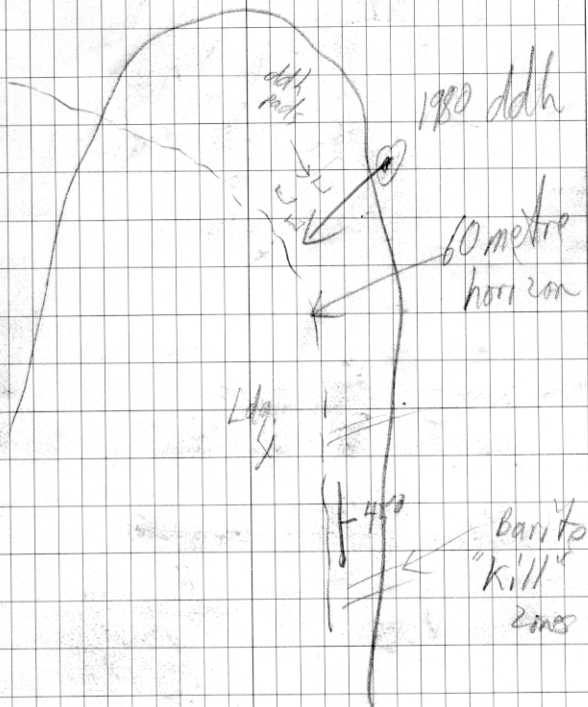
Visit CIRQUE deposit

- Discovery showing
- barite kill zone

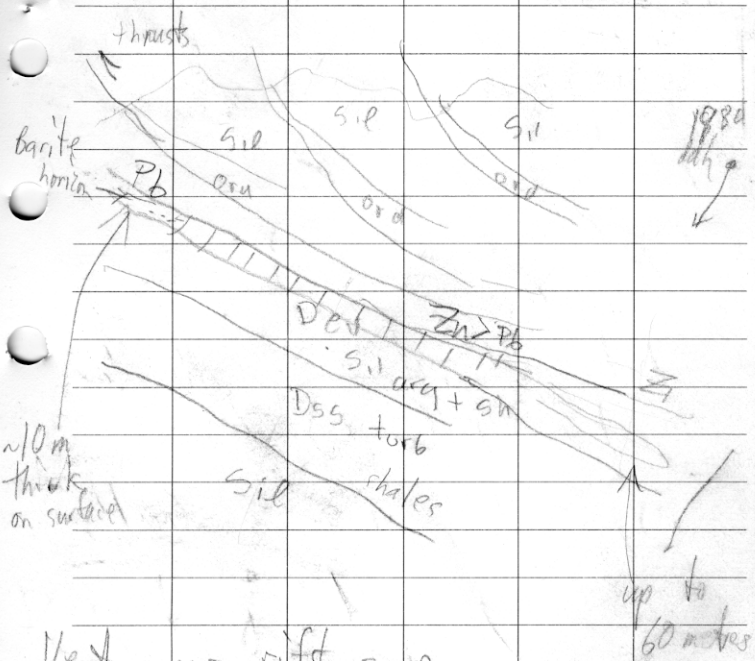
CIRQUE

[94F008]

\$



CIRQUE SECTION



Vent area = rift zone  
 parallel to veic. fault in Ord.  
 = lateral facies changes

Reserves  
 30m tons @ 7.9% Zn  
 2.3% Pb  
 1.5 g/ton Ag

higher Pb:Zn ratio = closer to vent

Stop at FIN-BOW camp  
+ talk with - Wayne Roberts,  
- Charlie Jeffries

Hit 1st good intersec. this  
yr. (145 ft. of MS)

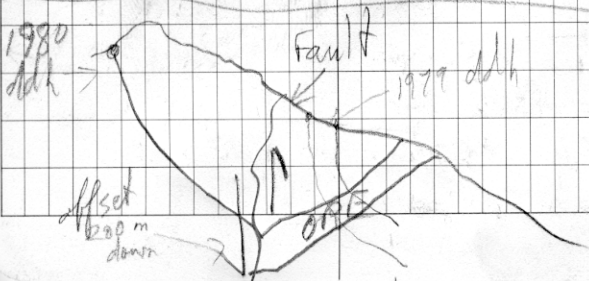
- last yr - up to 250 ft.,

- Holes deviate strongly due  
to bedding (geol.)

- major steep reverse faults

- Orebody cut off to west  
- 1980 dth try to find offset  
which is at least 200 meters

- other good targets on Cirque.  
- 3 drills at work



94F008 CIRQUE July 4/16  
+ 28°C

- 9:00am - 9:15am - with Bob Lane (MET, R. Gen)
- Cirque Operating Co. Pilot - Marty (NMH)
- (Teck Corp. - watch person) (Don Fipson)

Visit dumps + portal ('rough' ground)  
10:03 - 10:15am

highly oxidized dump material  
- good massive barite  
- pyrite + ZnS + PbS

Note: most aerial shots taken looking  
ENE to Northerly  
i.e. camp/dump/portal in foreground left  
and barite kill zone over ridge  
in bkgd/to right, Barite Kill Zone (backside)

