



**LEGEND**

**TRIASSIC**

**KARMUTSEN FORMATION**

- 3** MAFIC VOLCANICS
  - 3a PILLOW BASALT
  - 3b MASSIVE FLOWS
  - 3c LAPILLI TUFF, BRECCIA: INTERMEDIATE IN COMPOSITION
  - 3d FELDSPAR PORPHYRY SILLS? FLOWS? GLOMEROPORPHYRITIC TEXTURE
  - 3e VERY FINE GRAINED FLOWS (?)

**UPPER PALEOZOIC-EARLY TRIASSIC SEDIMENT-SILL UNIT**

**2 SILLS (MAY BE COGENETIC WITH UNIT 3)**

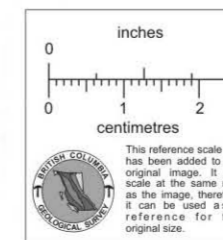
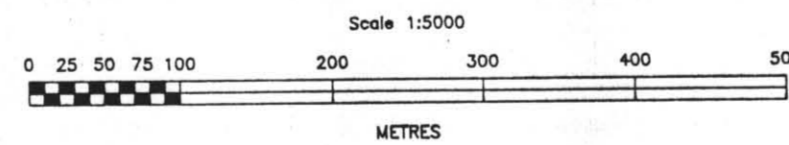
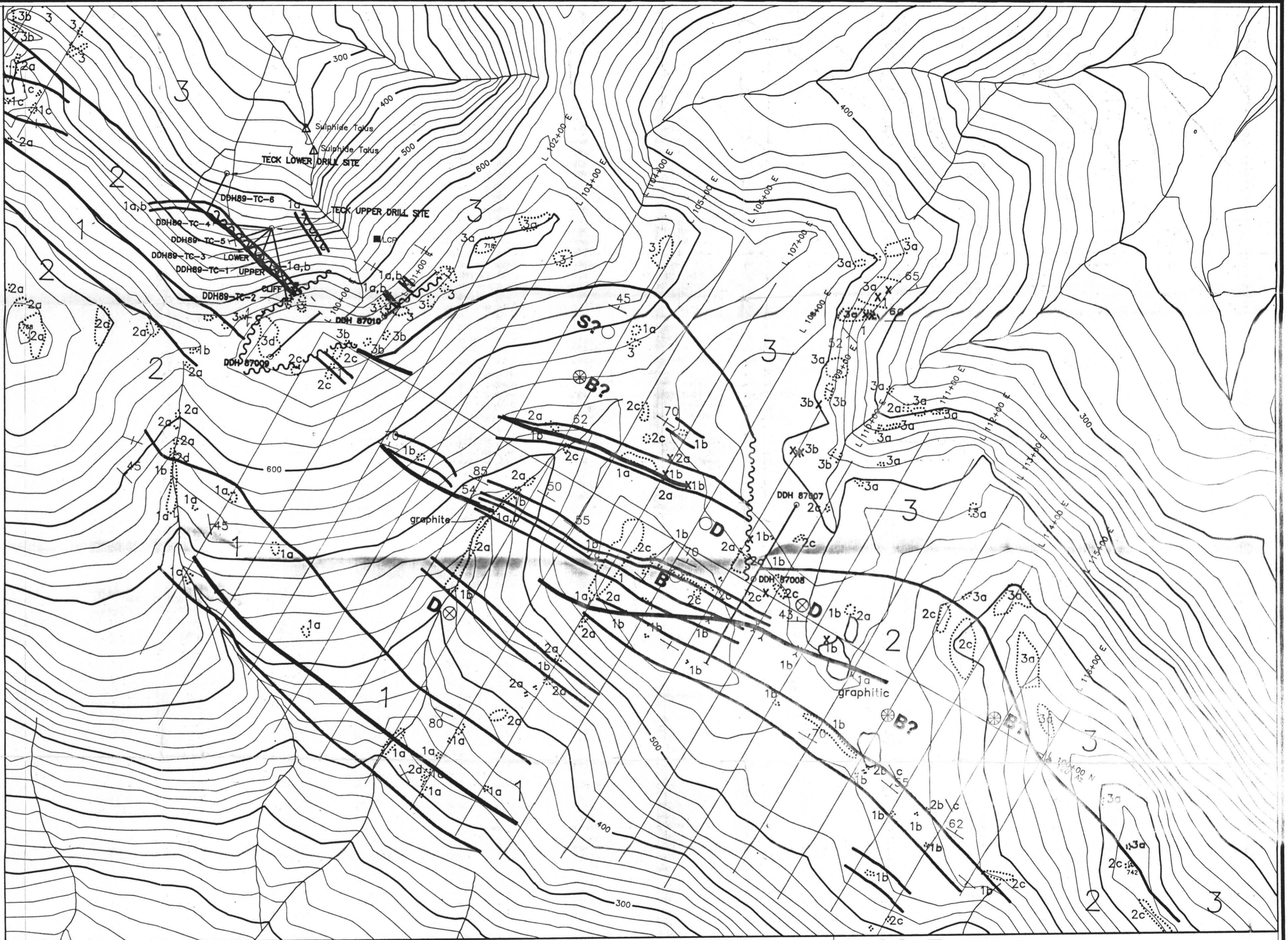
- 2a GABBRO, DIORITE: MEDIUM GRAINED
- 2b DIORITE: FINE GRAINED WITH GLOMEROPORPHYRITIC TEXTURE
- 2c DIABASE: FINE TO VERY FINE GRAINED
- 2d LEUCOCRATIC DYKES: GREY, BUFF VERY FINE GRAINED LEUCODIORITES

**1 SEDIMENTS, TUFFS**

- 1a BLACK CHERT, CHERTY ARGILLITE, SILTSTONE
- 1b WHITE, LIGHT GREY, BUFF CHERT
- 1c TUFFACEOUS CHERT: PALE TO MEDIUM SEA GREEN
- 1d DACITE (?) TUFF: MEDIUM GREEN, MODERATELY SOFT, SERICITIC
- 1e Limestone: LIGHT TO MEDIUM GREY
- 1f INTERBEDDED LIMESTONE, CHERT, LIMY CHERT: WHITE TO LIGHT GREY
- 1g BLACK LIMESTONE
- 1h CALC SILICATE: VUGGY WEATHERING

**SYMBOLS**

- OUTCROP
- SMALL OUTCROP
- SULPHIDE TALUS
- BEDDING
- FOLIATION
- CLEAVAGE
- CONTACT
- FAULT
- STREAM
- HAND TRENCH
- AEM ANOMALY
- VLF CONDUCTOR
- DIAMOND DRILL HOLE (1993)
- 1989 TECK DRILL HOLES
- GRID LINES 1991



**INCO EXPLORATION AND TECHNICAL SERVICES INC.**

Vancouver, B.C.  
V6C 2X8

Project: CIMADORO PROPERTY		Area: PRINCE RUPERT, B.C.	
Supervisor: Cam Bell		Instrument:	
Compiled by: Cam Bell		Survey date:	
Scale: 1:5000		Date drawn: 04/28/93	Revised: 06/28/93
File: CIM015.DWG		N.T.S. 103 H/12	
DRILLHOLE LOCATION; GEOLOGY AND GEOPHYSICS MAP		SHEET 1	FIGURE 4

881766