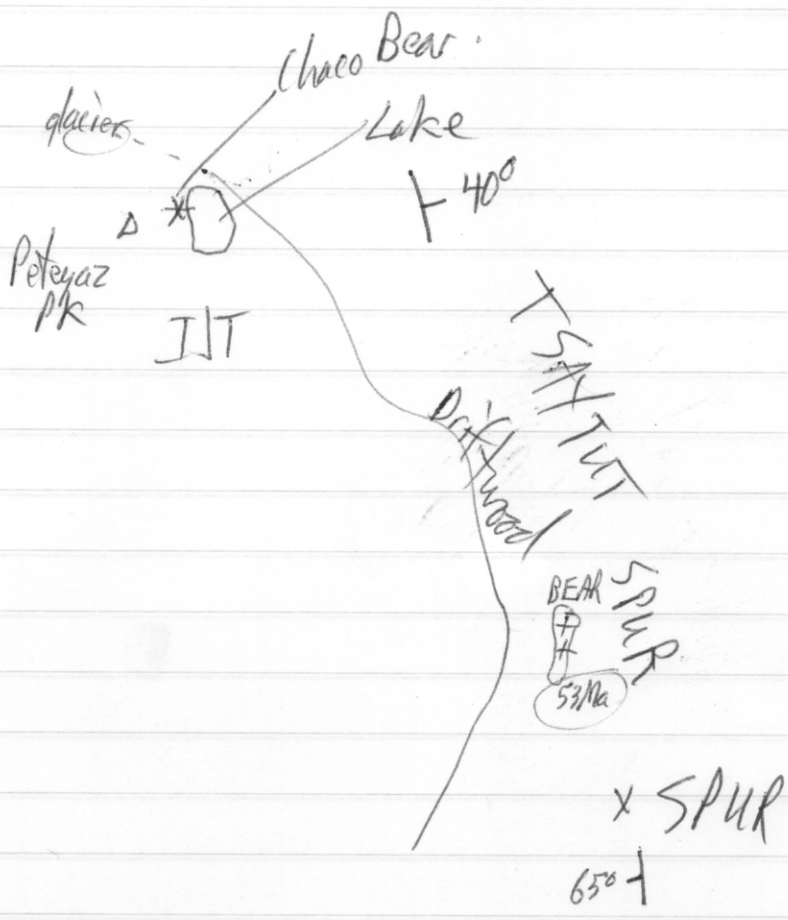


881716 94D

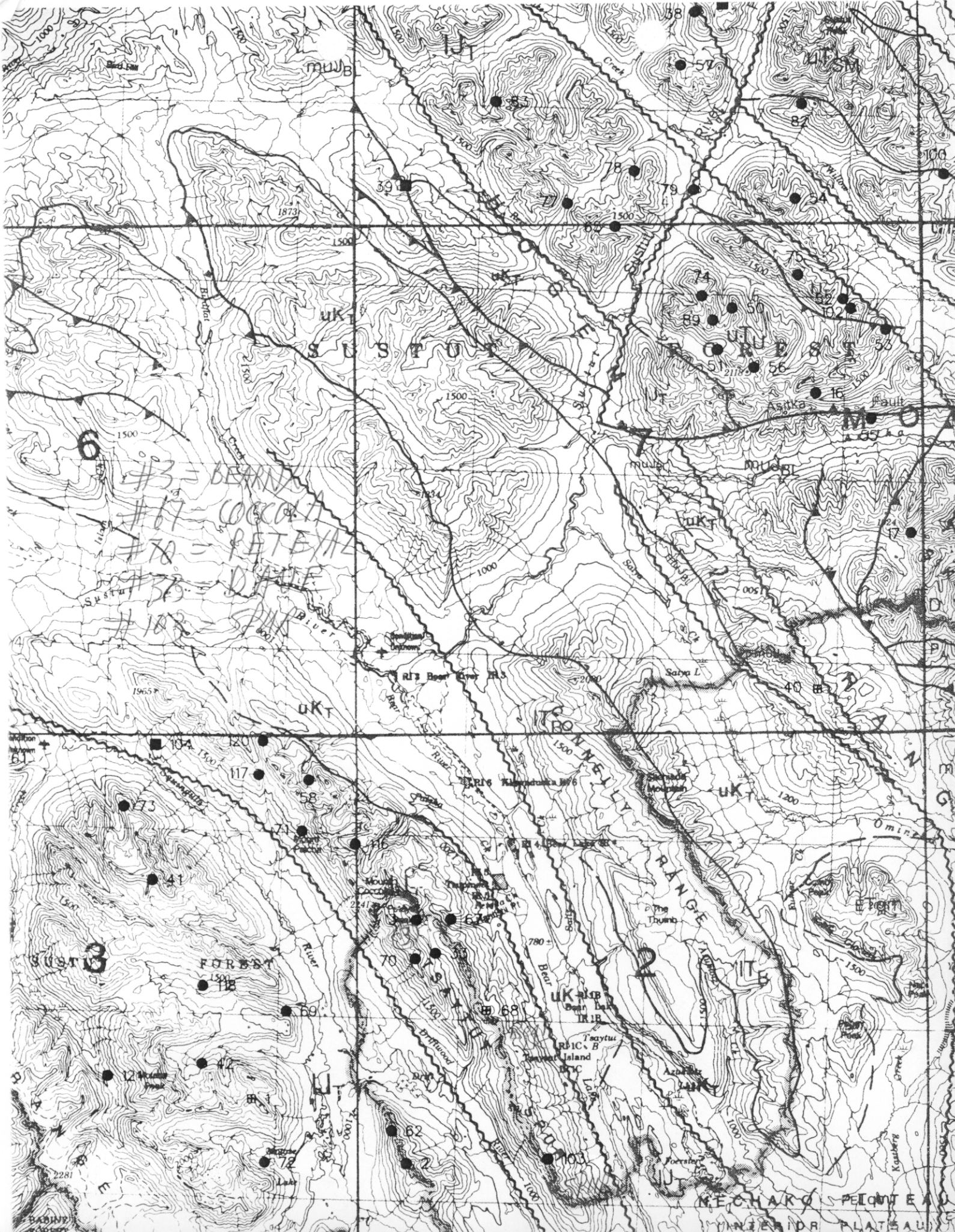
May 2/97

Wes. Raven  
David Cole

- CHACO BEAR - W. of Bear Lk. Imperial Metals  
 Jack Ashton (Peteyaz Park) - Tsaytut Spur  
 option.
- Suncor - early '80s - to drill stage
  - Subvolcanic Ag-Cu-Au porphyry-type
- Katsberg Intr (50Ma)



TS suggests 'local tour' (eg. Spur, Skuttsil knobs, etc.)  
 (+Lane)

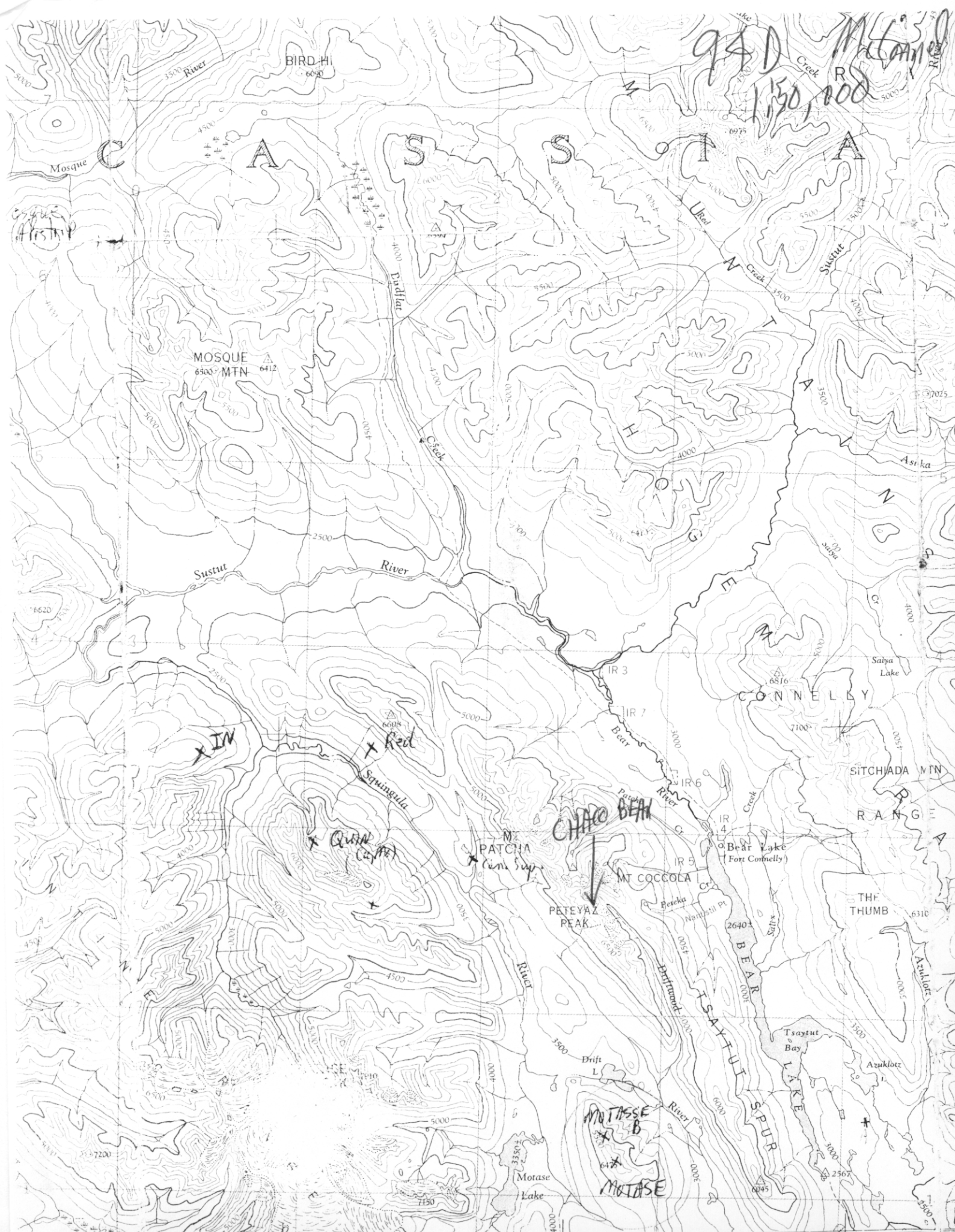


#6  
#3 = DEANNA  
#17 = COCOA  
#70 = PETEXIL  
#75 = DUFF  
#103 = [unclear]

3

2

NECHARD PELOTEAU  
INTERIOR PLATEAU



94D  
1,130,000  
McLean

CASSIN MOUNTAINS

MOSQUE  
6500 MTN  
6412

CONNELLY

CHAO BEAN

MT COCCOLA

PETEYAZ  
PEAK

MOTASSE  
B

MOTASSE

Sustut  
River

Dufflar  
Creek

IR 3

IR 7

IR 6

IR 4

IR 5

SITCHIADA MTN

RANGE

THE  
THUMB

Bear Lake  
(Fort Connelly)

2640

BEAR  
LAKE

Tsayut  
Bay

LAKE

SPUR

LAKE

LAKE

LAKE

LAKE

LAKE

7200

Motase  
Lake

4000

4000

6045

2567

2500



00°

GSC Map 962A

1" = 4 miles

30'

15

1949

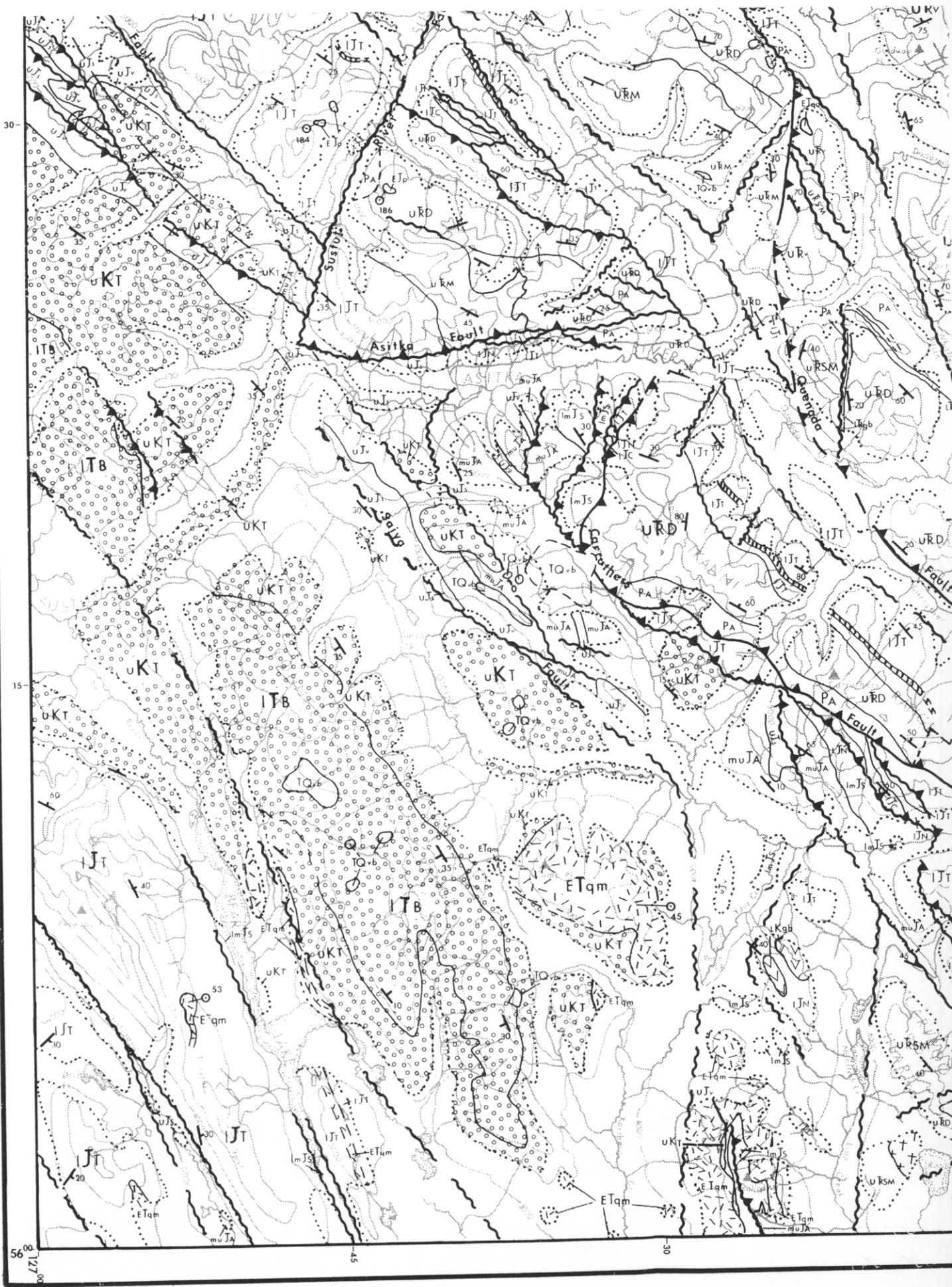
179487

MAP 962A

Takla G.



McCONNELL CREEK 94 D McConnell C



OF. 342 (GSC) 5 km

MCCONNELL CREEK MAP-AREA  
(94D/E)

[1975]