

WSW

ENE

ELEV. 1360 m.

ELEV. 1320 m.

ELEV. 1280 m.

ELEV. 1240 m.

ELEV. 1200 m.

ELEV. 1160 m.

ASSAY TABLE: DDH 86-10

| From (m) | To (m) | Width (m) | Au oz/t | Ag ppm | Interval (weighted oz/t Au) |
|----------|--------|-----------|---------|--------|-----------------------------|
| 40.84    | 41.76  | 0.92      | 0.026   | 2.7    |                             |
| 44.50    | 46.02  | 1.52      | 0.125   | 4.1    |                             |

ASSAY TABLE: DDH 86-15

| From (m) | To (m) | Width (m) | Au oz/t | Ag ppm | Interval (weighted oz/t Au) |
|----------|--------|-----------|---------|--------|-----------------------------|
| 41.15    | 42.98  | 1.83      | 0.284   | 5.8    |                             |
| 43.74    | 44.20  | 0.46      | 0.065   |        |                             |
| 50.29    | 51.82  | 1.53      | 0.022   |        |                             |

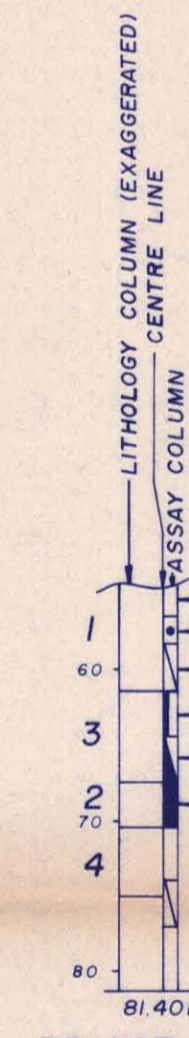
ASSAY TABLE: DDH 88-62

| From (m) | To (m) | Width (m) | Au oz/t | Ag ppm | Interval (weighted oz/t Au) |
|----------|--------|-----------|---------|--------|-----------------------------|
| 52.20    | 53.15  | 0.95      | 0.030   | 2.8    |                             |
| 71.90    | 72.35  | 0.45      | 0.002   | 3.2    |                             |
| 108.70   | 110.20 | 1.50      | 0.077   | 4.8    |                             |
| 110.20   | 111.70 | 1.50      | 0.160   | 3.4    | 3.00m @ .119 oz/t           |
| 116.10   | 117.15 | 1.05      | 0.026   | 2.0    |                             |
| 117.15   | 118.25 | 1.10      | 0.029   | 1.4    |                             |
| 121.50   | 123.00 | 1.50      | 0.023   | 2.3    |                             |

ASSAY TABLE: DDH 88-73

| From (m) | To (m) | Width (m) | Au oz/t | Ag ppm | Interval (weighted oz/t Au) |
|----------|--------|-----------|---------|--------|-----------------------------|
| 138.20   | 139.40 | 1.20      | 0.074   | 15.5   |                             |
| 139.40   | 140.65 | 1.25      | 0.059   | 2.6    | 2.45m @ .066 oz/t           |
| 151.50   | 152.75 | 1.25      | 0.008   | 6.0    |                             |
| 152.75   | 153.95 | 1.20      | 0.010   | 6.6    |                             |
| 153.95   | 155.35 | 1.40      | 0.168   | 3.5    | * oz/t Ag                   |
| 155.35   | 156.75 | 1.40      | 0.014   | 10.1   |                             |
| 156.75   | 158.15 | 1.40      | 0.032   | 13.4   |                             |
| 158.15   | 159.55 | 1.40      | 0.086   | 1.17   |                             |
| 159.55   | 160.80 | 1.25      | 0.053   | 1.72   |                             |
| 160.80   | 162.15 | 1.35      | 0.029   | 0.84   | 5.40m @ .050 oz/t           |

LEGEND



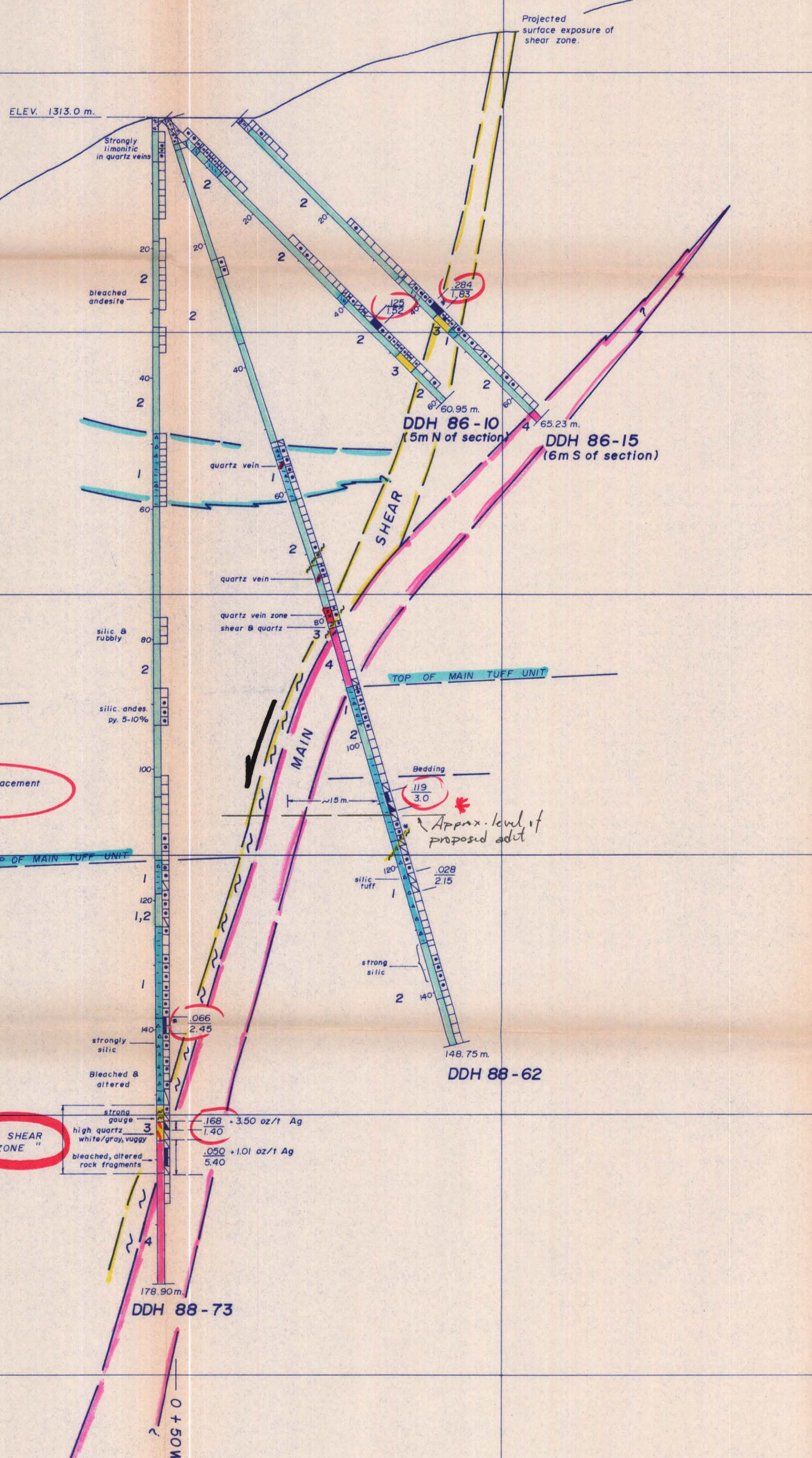
ASSAY CATEGORIES

|   |                           |
|---|---------------------------|
| 1 | < .001 oz./ton GOLD       |
| 2 | .001 to .009 oz./ton GOLD |
| 3 | .010 to .049 oz./ton GOLD |
| 4 | .050 to .099 oz./ton GOLD |
| 5 | .100 to .199 oz./ton GOLD |
| 6 | > .200 oz./ton GOLD       |

\* Sample has been screened and found to contain coarse gold.

DDH 87-28 LITHOLOGY

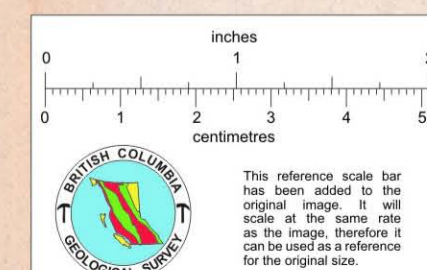
- 4 FELDSPAR PORPHYRY DIKE
- 3 SHEAR ZONE
- 2 ANDESITE FLOWS, MINOR BASALT
- 1 TUFF, FINE (LOCALLY BEDDED) TO COARSE GRAINED
- ~ SHEAR / FRACTURE



Vertical Displacement ≈ 25 m

"MAIN SHEAR ZONE"

Main Shear Zone



HUNTINGTON RESOURCES INC. / CORONA CORP.

**BRETT CLAIMS SECTION 9+24N**

VERNON MINING DIVISION, BRITISH COLUMBIA

TECHNICAL WORK BY: GEOQUEST CONSULTING LTD. SCALE: 0 25 50 100 metres  
1:500

DRAWN BY: DBM TECHNICAL SERVICES DATE: DEC., 1988

REVISION: FIG. NO.: 881398