

GEOLOGICAL MAP OF THE SALMO LEAD-ZINC AREA

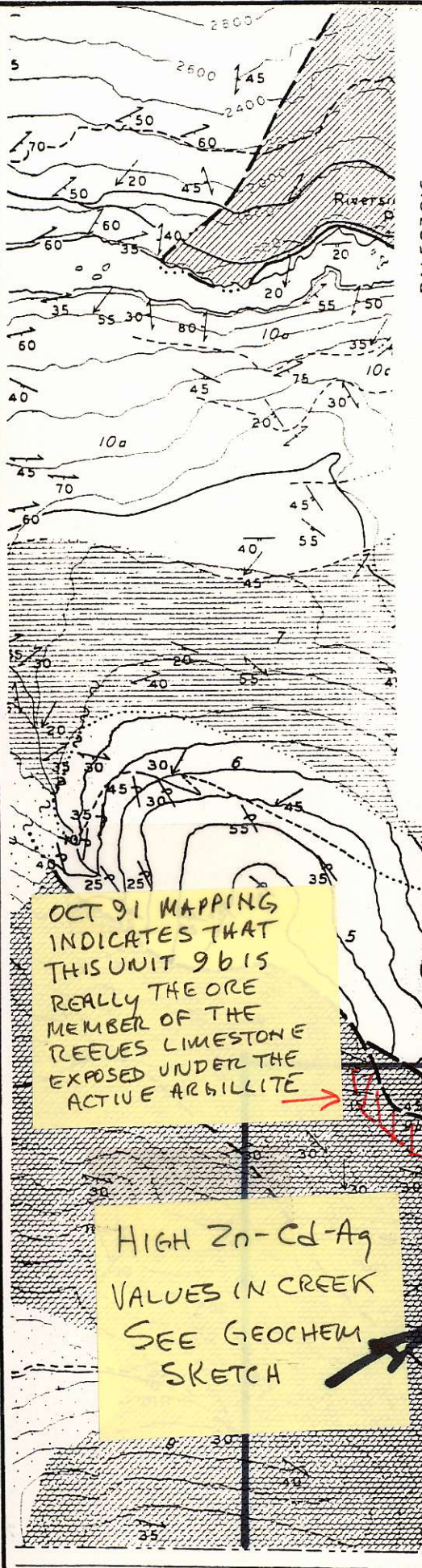
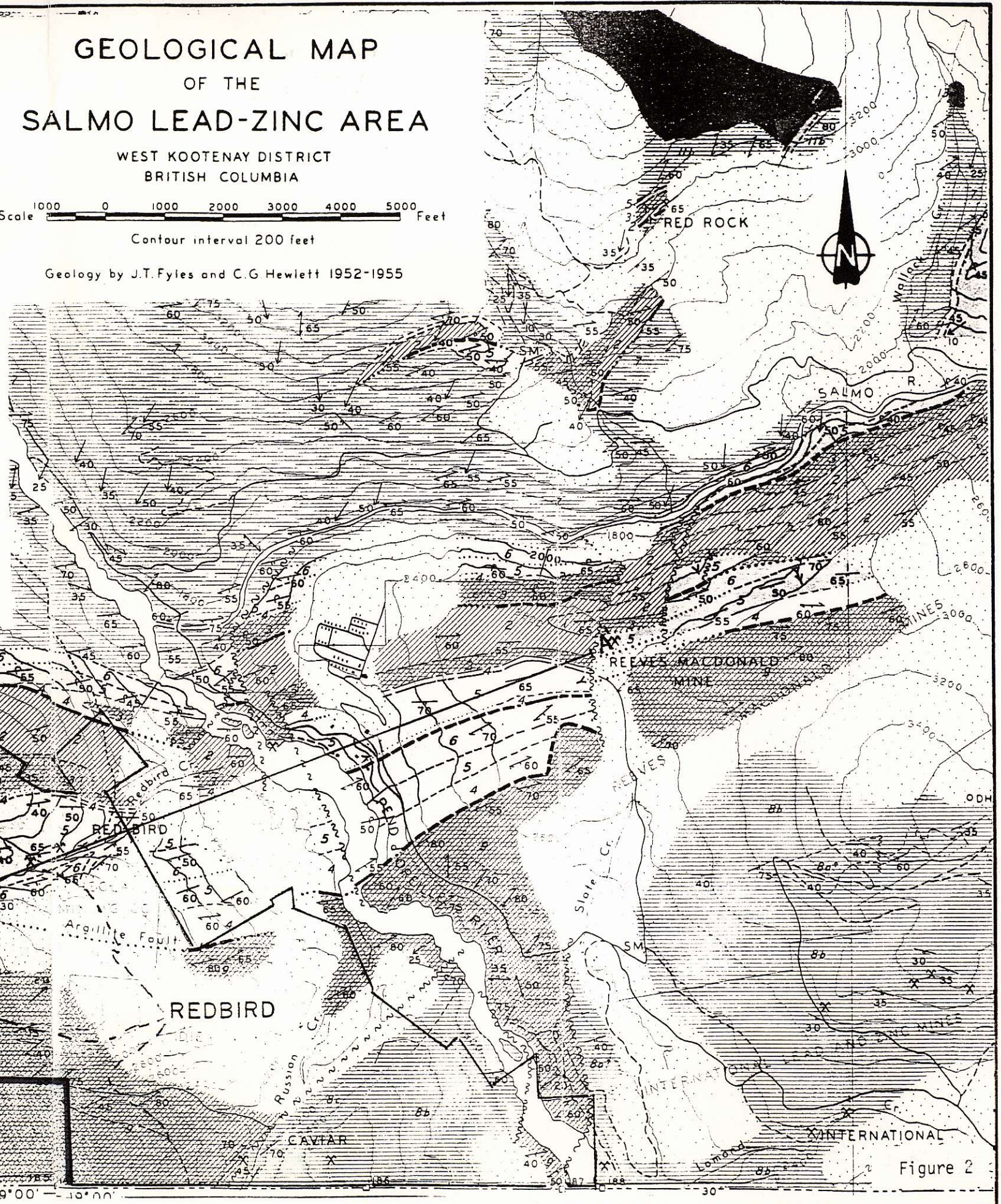
WEST KOOTENAY DISTRICT
BRITISH COLUMBIA

Scale 0 1000 2000 3000 4000 5000 Feet
Contour interval 200 feet

Geology by J.T. Fyles and C.G. Hewlett 1952-1955

- ORDOVICIAN**
- ACTIVE FORMATION: mainly black argillite but including:
 - 9a- grey limestone and argillaceous limestone
 - 9b- dolomite, dolomite breccia, and limestone
 - 9c- silicified and silicated argillite and limestone
- CAMBRIAN**
- NELWAY FORMATION: limestone and dolomite
 - 8c- upper grey limestone
 - 8b- dark and light grey dolomite
 - 8a- lower limestone and argillaceous limestone
- LAIB FORMATION**
- UPPER LAIB UNDIVIDED: phyllite, schist, micaceous quartzite, and minor limestone
 - EMERALD MEMBER: black phyllite and argillite
 - REEVES MEMBER: grey limestone, minor dolomite
 - TRUMAN MEMBER: phyllite and argillite with lenses of limestone
 - RENO FORMATION: grey blocky and grey micaceous quartzite
- QUARTZITE RANGE FORMATION**
- NAVADA MEMBER: white quartzite and brown micaceous quartzite
 - NUGGET MEMBER: white quartzite

To accompany B.C. Department of Mines Bulletin 41. "Stratigraphy and Structure of the Salmo Lead-Zinc Area." 1959

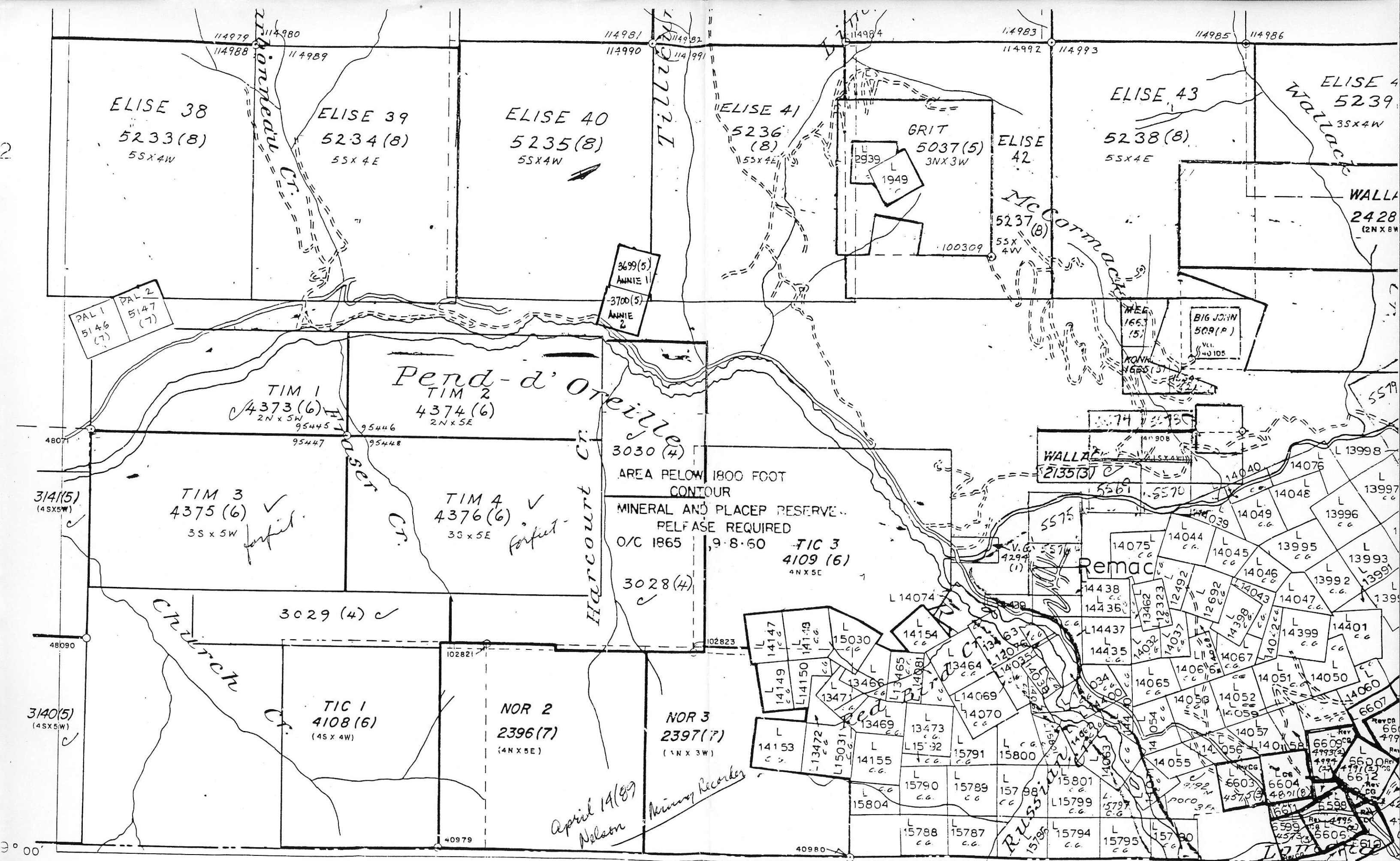


OCT 91 MAPPING INDICATES THAT THIS UNIT 9b IS REALLY THE ORE MEMBER OF THE REEVES LIMESTONE EXPOSED UNDER THE ACTIVE ARGILLITE

HIGH Zn-Cd-Ag VALUES IN CREEK SEE GEOCHEM SKETCH

NOR 2 NOR 3

Figure 2



3699(5)
ANNIE 1
3700(5)
ANNIE 2

PAL 1
5146 (7)
PAL 2
5147 (7)

Pend-d'Oreille
TIM 2
4374(6)
2N x 5E

AREA BELOW 1800 FOOT
CONTOUR
MINERAL AND PLACER RESERVE
RELEASE REQUIRED
O/C 1865 9-8-60
TIC 3
4109(6)
4N x 5E

Church Cr.

Harcourt Cr.

McCormack Cr.

*April 14(89)
Nelson
Mining Recorder*