

862473



EQUITY
SILVER MINES
LIMITED

FACSIMILE TRANSMITTAL FORM

DATE: 16 FEB 94

TIME: _____

ATTENTION: ROB PEASE

FROM: BOB BAASE

TOTAL PAGES INCLUDING THIS TRANS. FORM: 4

MESSAGE:

ATTACHED ARE G. KLEIN FLOAT SAMPLE
LOCATIONS AND GRADES ON THE ALLIN CLAIMS.

ROB

NUMBER FAX SENT TO: 372-7784

FURTHER QUERIES CONTACT EITHER NUMBER LISTED BELOW

N

- 5 1 0 0 - 5

2 7 2 - 6 2 4 0 0 - - - -

1 0 0 0 4 0 -

30 BCB 91178 No. 174



NORTH SHEET

10543

10541

10542

10569

10573, 10570, 71, 72, 80, 74

10545

10540, 10579

10544

10539, 10578

10577

10576

10538

10537, 10549, 10550

10536, 10548, 10547

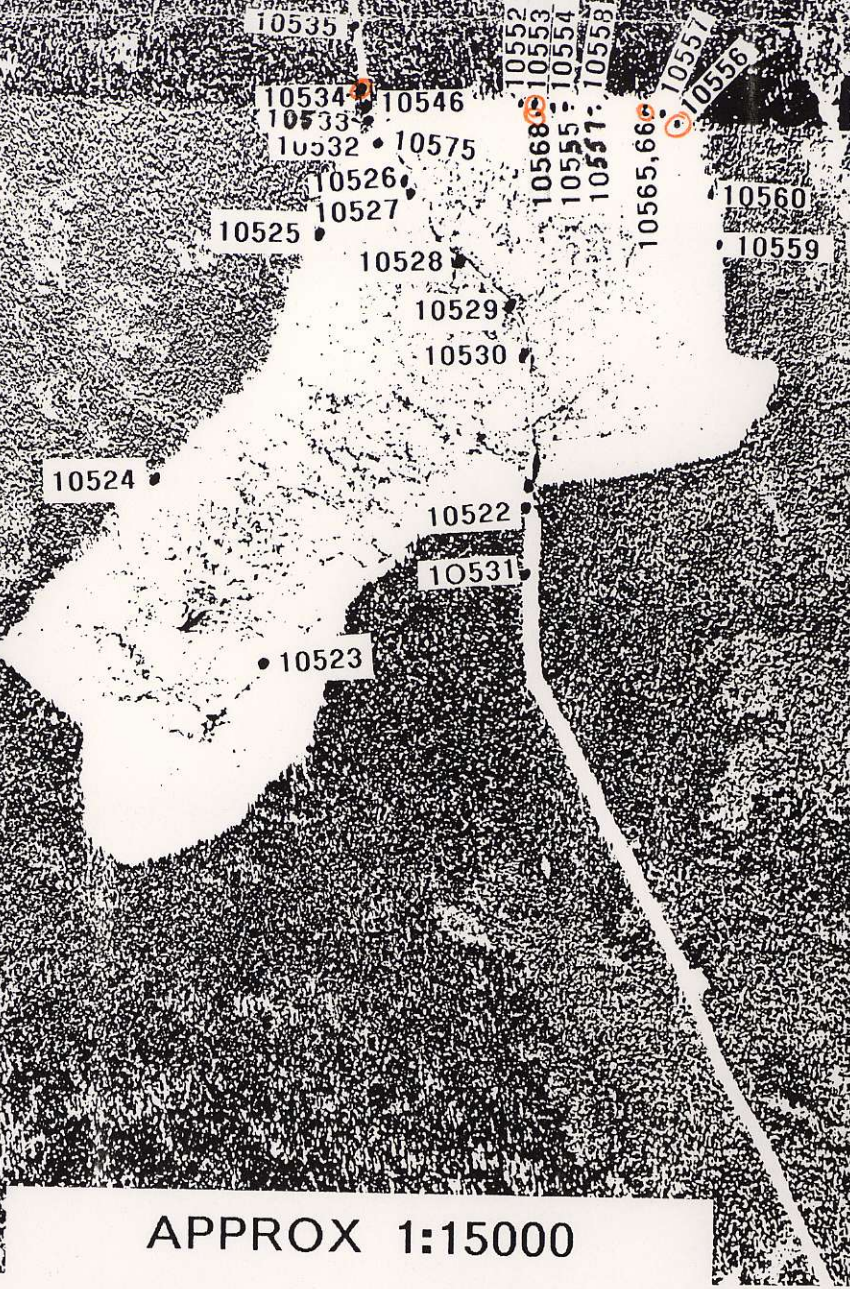
ALLIN CREEK

0 0 0 0 0

22

SOUTH STREET

B



APPROX 1:15000
EQUITY AREA FLOAT SAMPLE LOCATIONS

30 BC8 91178 NO. 169

- 0 4 0 0 0 1 - - - - 0 0 4 - 2 9 - 2 1 2 5 - 0 0 1 5 -

<u>Samp. #</u>	<u>%Cu</u>	<u>%Zn</u>	<u>ppm Ag</u>	<u>ppb Au</u>	<u>Remarks</u>
10534	1.78	0.21	145.1	780	90% pyrite
10547	10%+	1.32	505.1	5090	60% chalco 15% mag
10553	1.15	0.04	79.1	505	20% pyrite
10556	0.63	1.48	136.0	1562	15% pyrite
10566	1.23	1.14	53.8	480	10% pyrite
10568	1.26	0.05	257.5	2610	10% pyrite
10569	0.02	4.53	27.0	170	8% ZnS 10% pyrite
10571	13 grams, not assayed, sim to 10534				70% pyrite
10572	0.48	0.01	23.3	1240	20% pyrite
10577	2.36	2.99	119.6	2050	5% py 5% chalco
	2.10	1.31	149.6	1610	

A few more samples taken, not
yet assayed July 12/53 GK