

Sampling was done mid-Summer. 1961 - MORNING STAR  
862456

Upper tunnel was not sampled.

#7 1.0 ounce

Gold, @ 35<sup>00</sup>/<sub>100</sub>

#8 1.0 "

Silver ?

#8 3.5 "

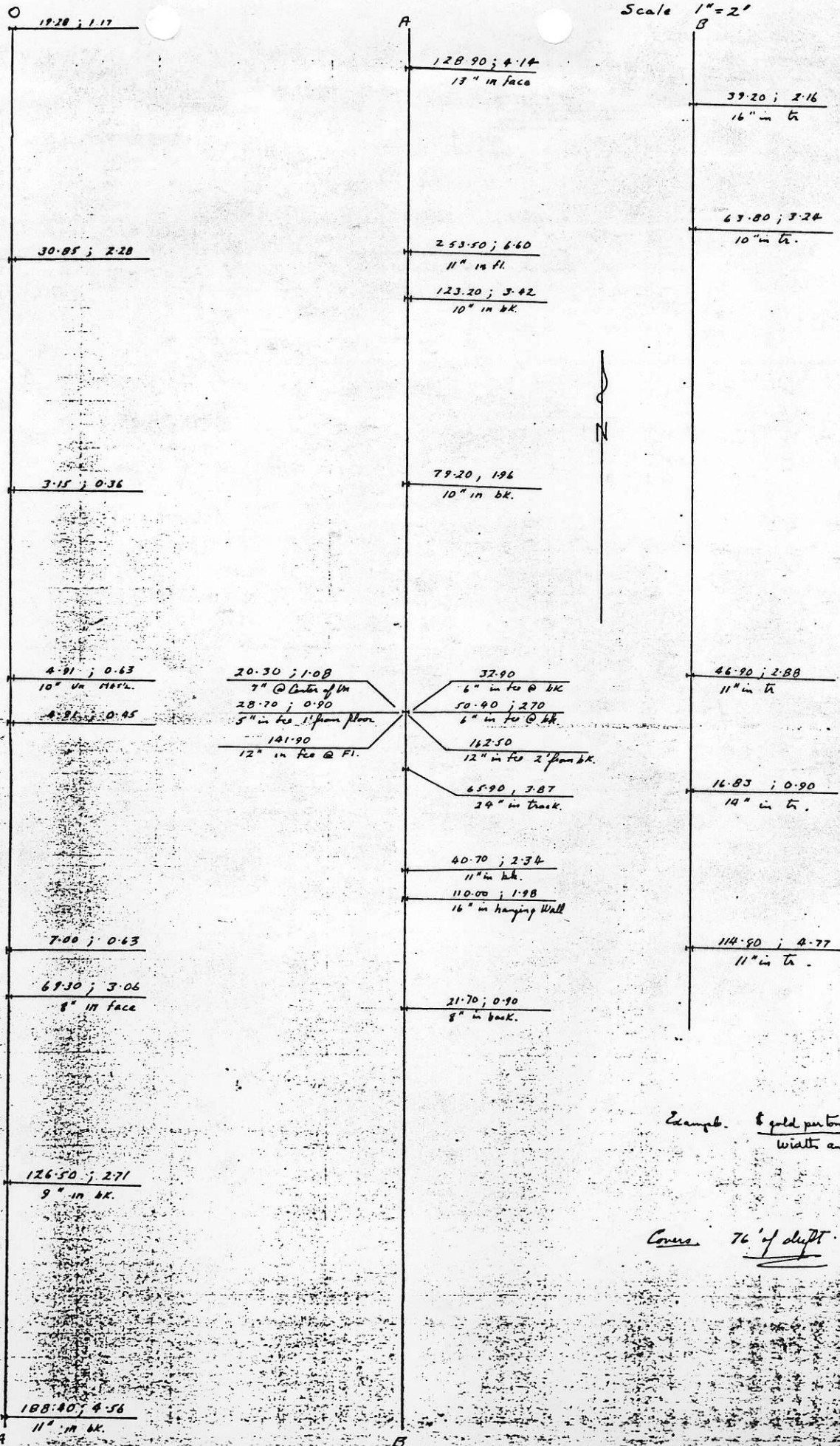
#9 5.0 "

#10 3.5 "

#11 7.0 ounces-

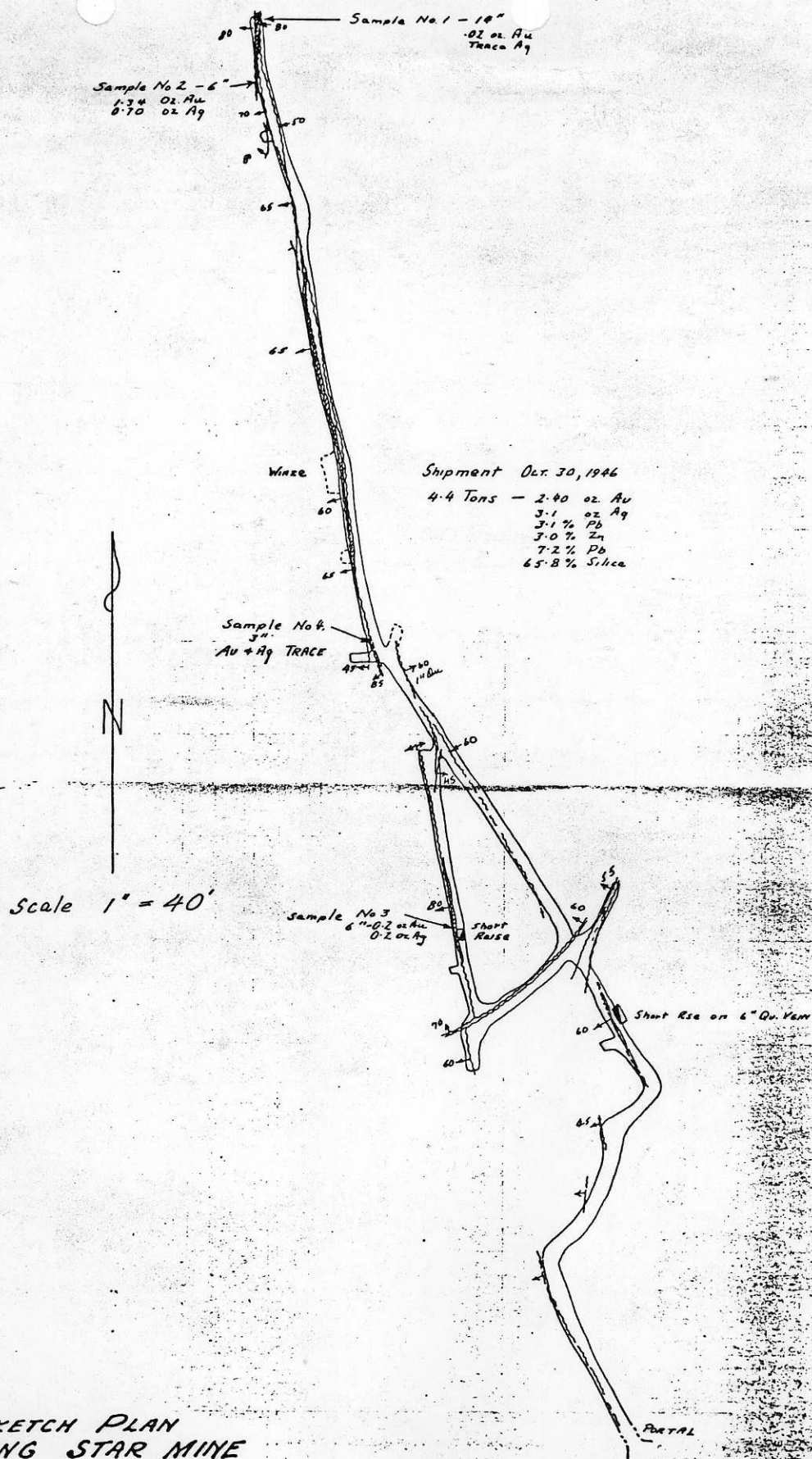
etc.

MORNING STAR MINE  
 Location ? - near face ?  
 Scale 1" = 2'



Example. \$ gold per ton ; \$ Silver/ton  
 width and location.

Covers 76' of shaft.



SKETCH PLAN  
 MORNING STAR MINE  
 SLOCAN CITY — B. C.  
 TAPE & COMPASS SURVEY — J. J. Reddy  
 Oct. / 1961