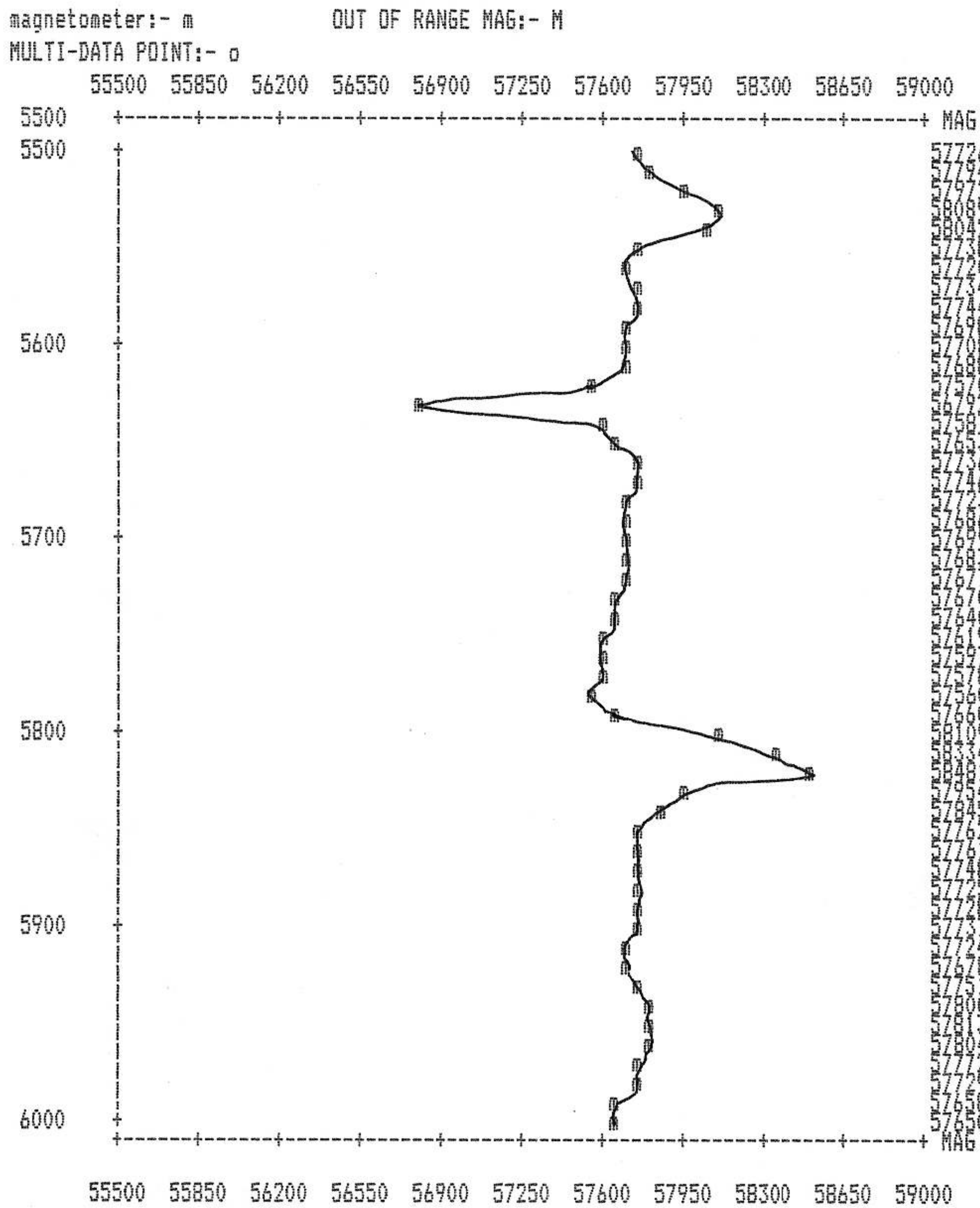


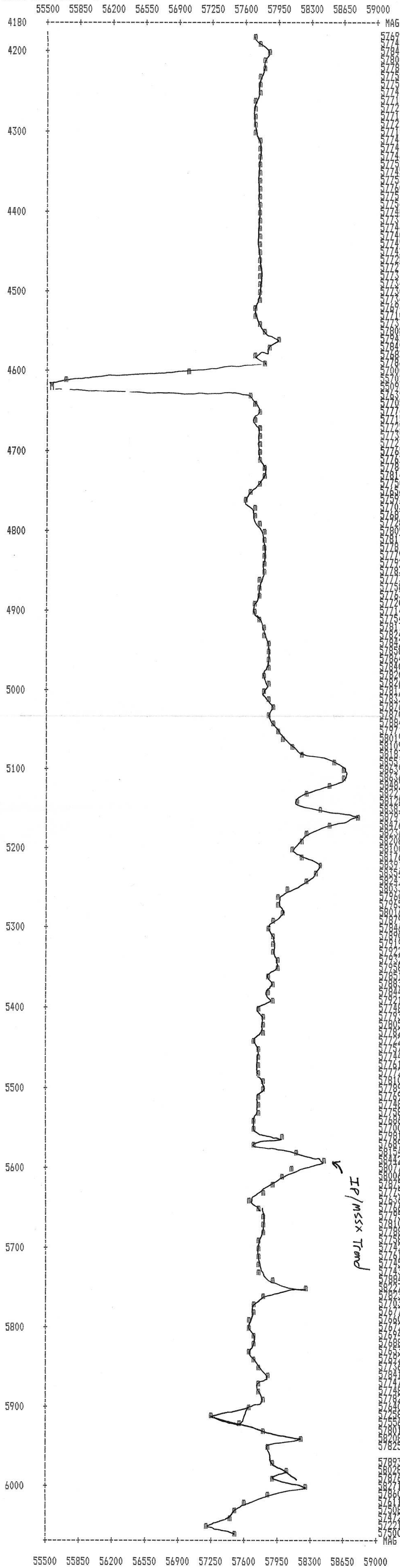
NOBLE PROPERTY
Line: 6600 E
Date: 89/06/14
Station interval = 1 print position

862344



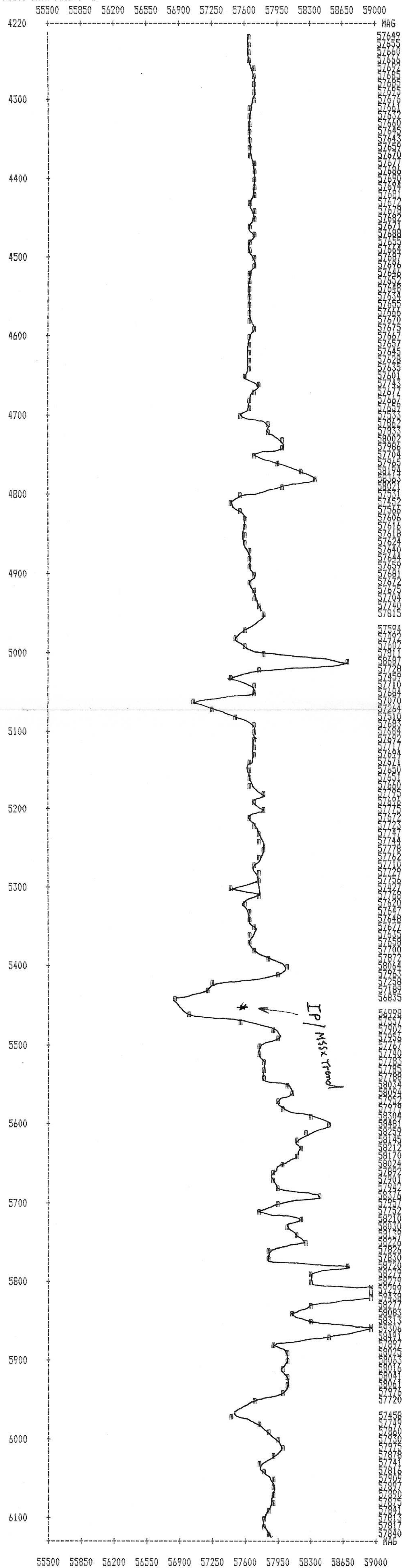
NOBLE PROPERTY
Line: 6700 E
Date: 89/06/14
Station interval = 1 print position

magnetometer: - m OUT OF RANGE MAG: - M
MULTI-DATA POINT: - o



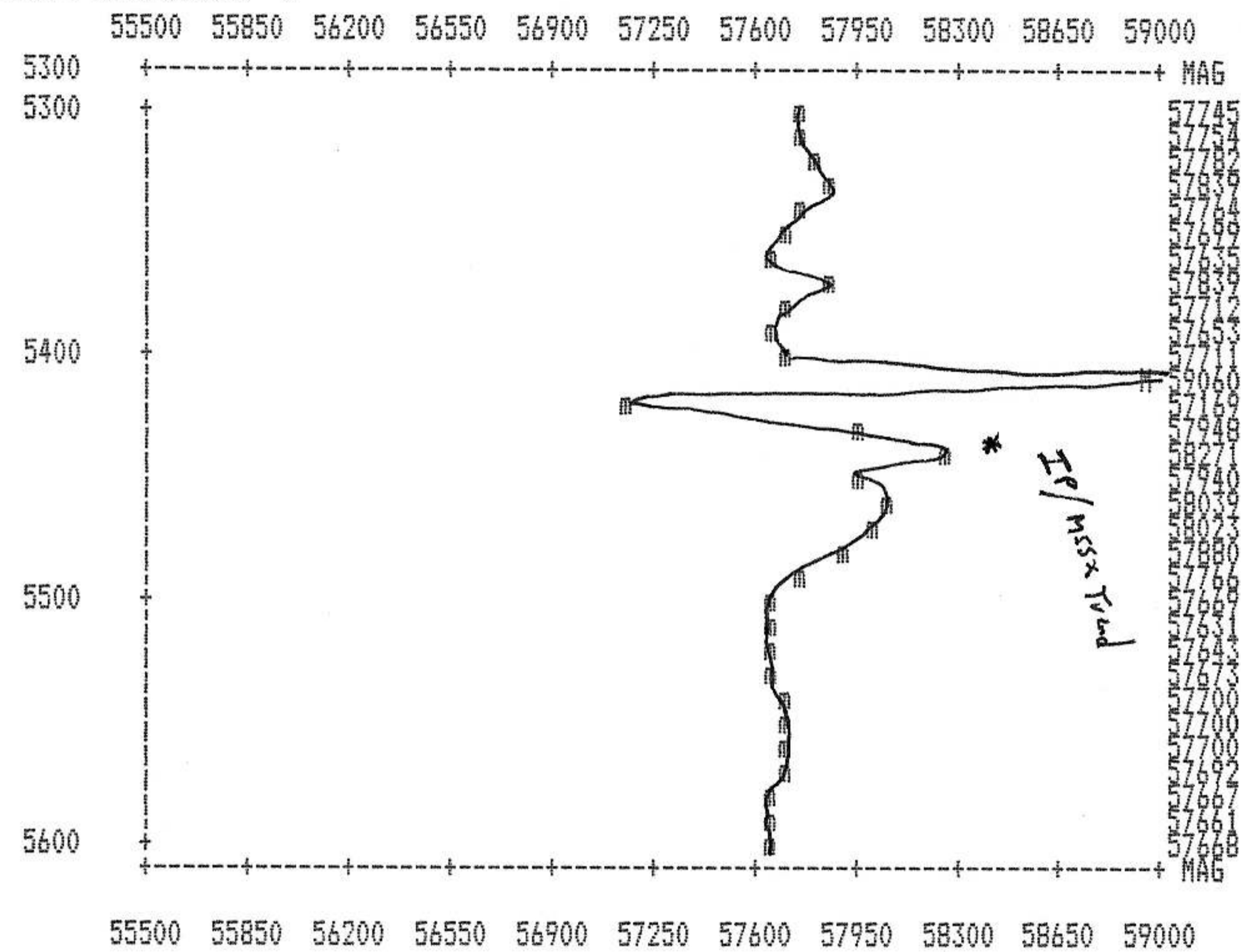
NOBLE PROPERTY
Line: 6900 E
Date: 89/06/14
Station interval = 1 print position

magnetometer:- m OUT OF RANGE MAG:- M
MULTI-DATA POINT:- D



NOBLE PROPERTY
 Line: 7000 E
 Date: 89/06/14
 Station interval = 1 print position

magnetometer:- m OUT OF RANGE MAG:- M
 MULTI-DATA POINT:- o



NOBLE PROPERTY

Line: 7200 E

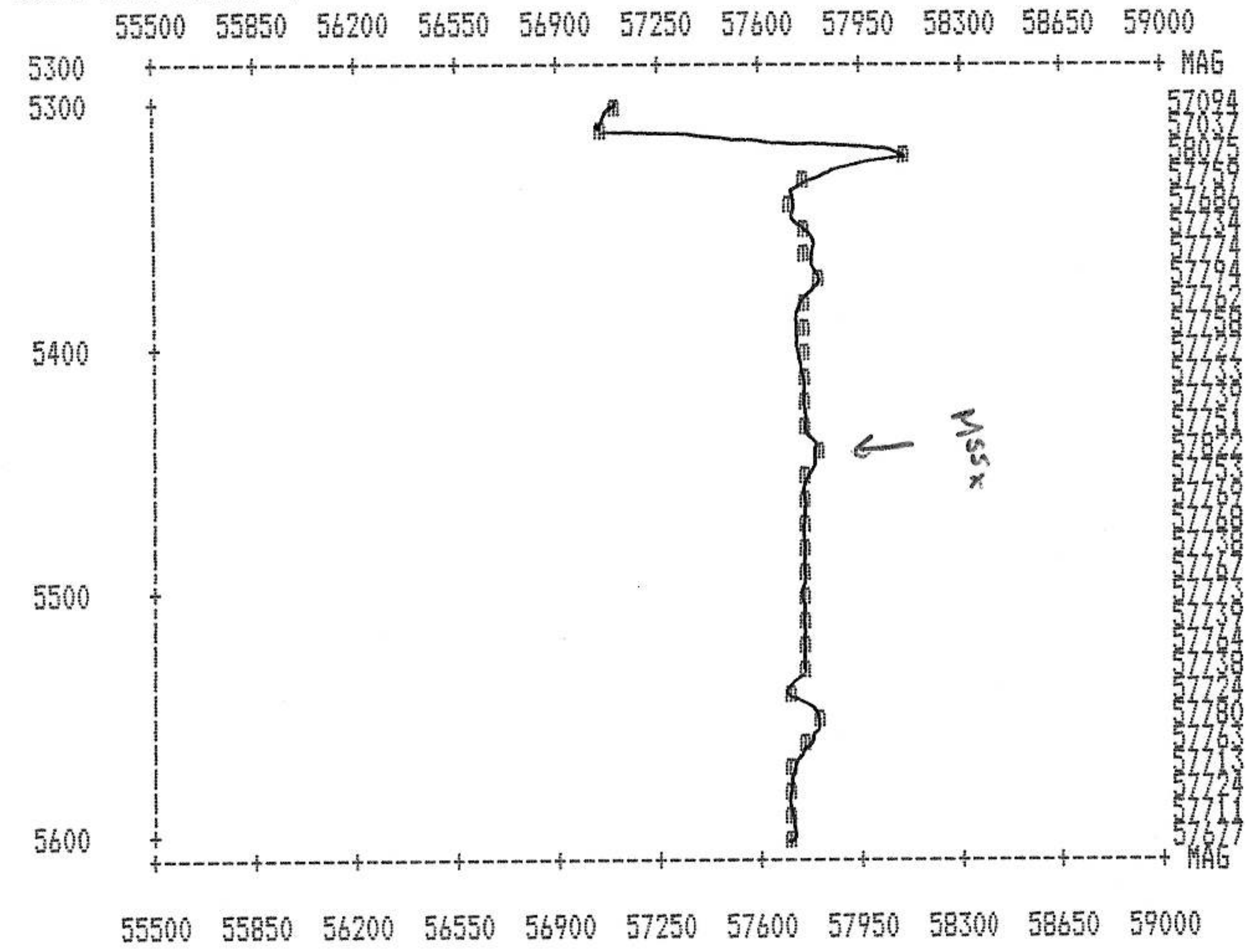
Date: 89/06/14

Station interval = 1 print position

magnetometer:- m

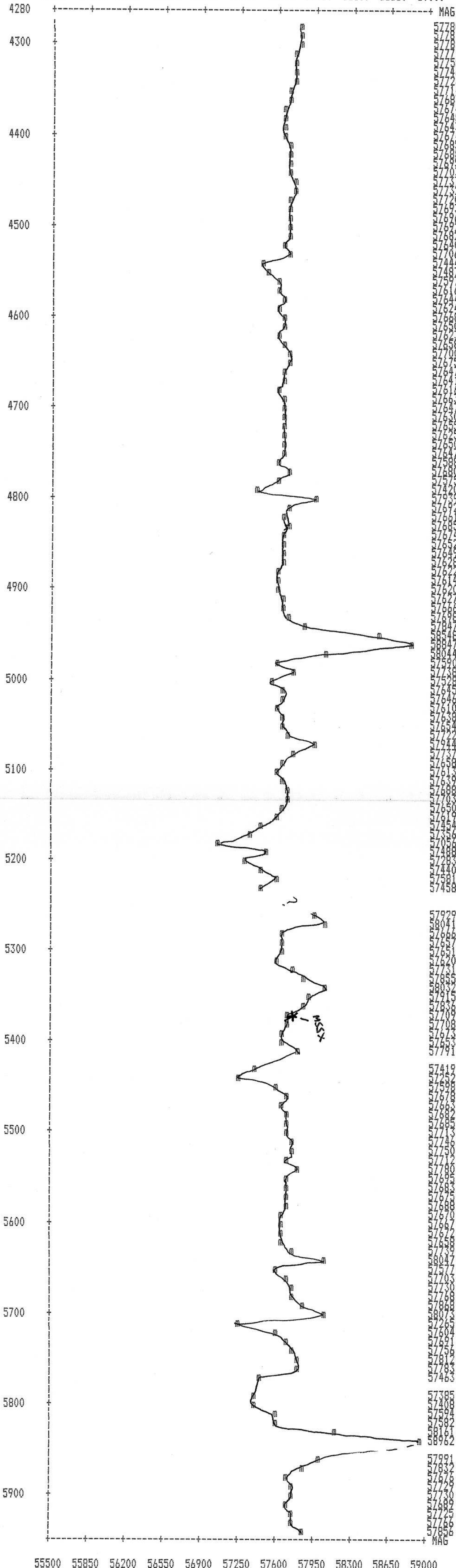
OUT OF RANGE MAG:- M

MULTI-DATA POINT:- o



NOBLE PROPERTY
 Line: 7300 E
 Date: 89/06/14
 Station interval = 1 print position

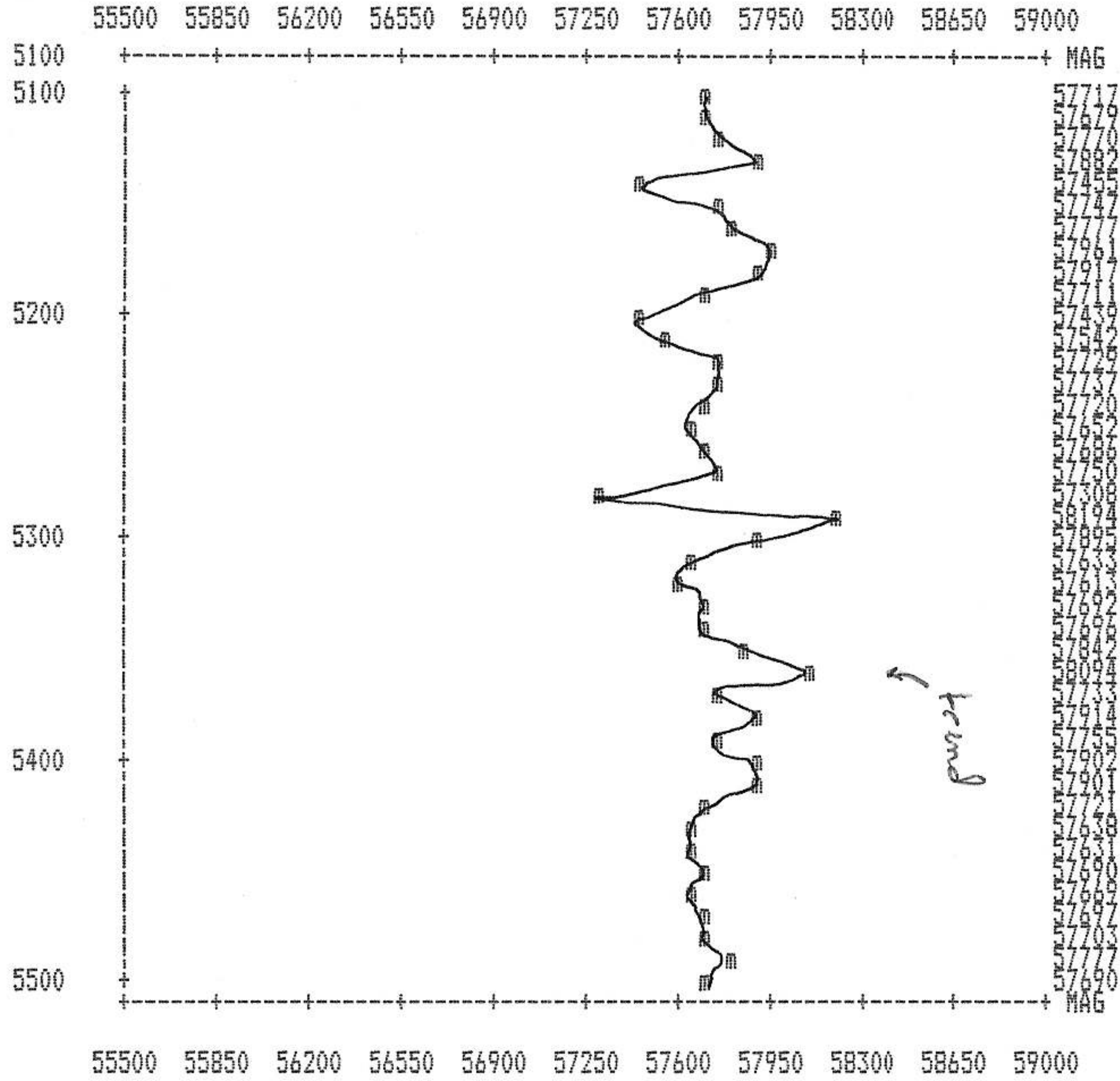
magnetometer:- m OUT OF RANGE MAG:- M
 MULTI-DATA POINT:- o
 55500 55850 56200 56550 56900 57250 57600 57950 58300 58650 59000



55500 55850 56200 56550 56900 57250 57600 57950 58300 58650 59000

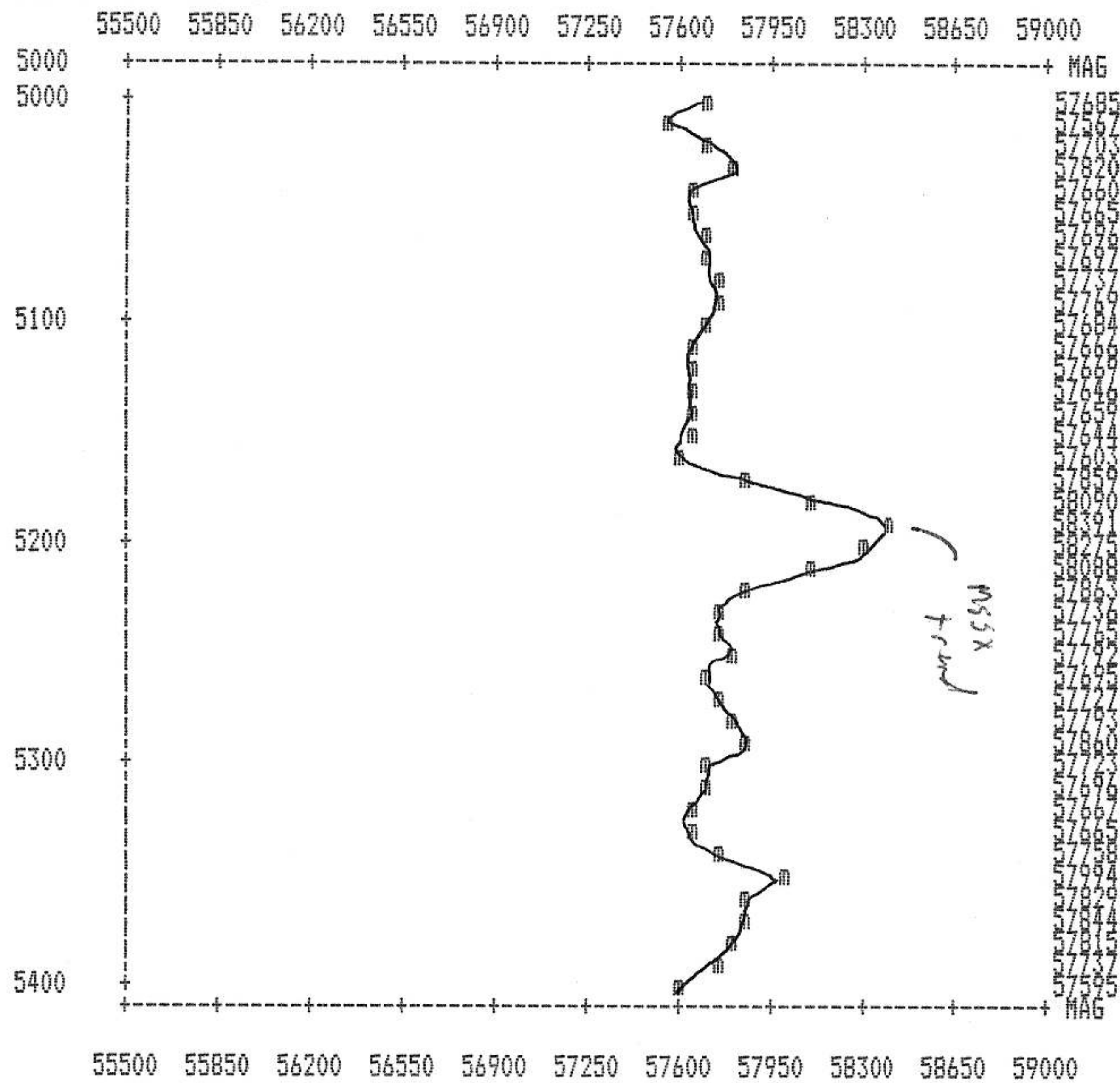
NOBLE PROPERTY
Line: 7400 E
Date: 89/06/14
Station interval = 1 print position

magnetometer:- m OUT OF RANGE MAG:- M
MULTI-DATA POINT:- o

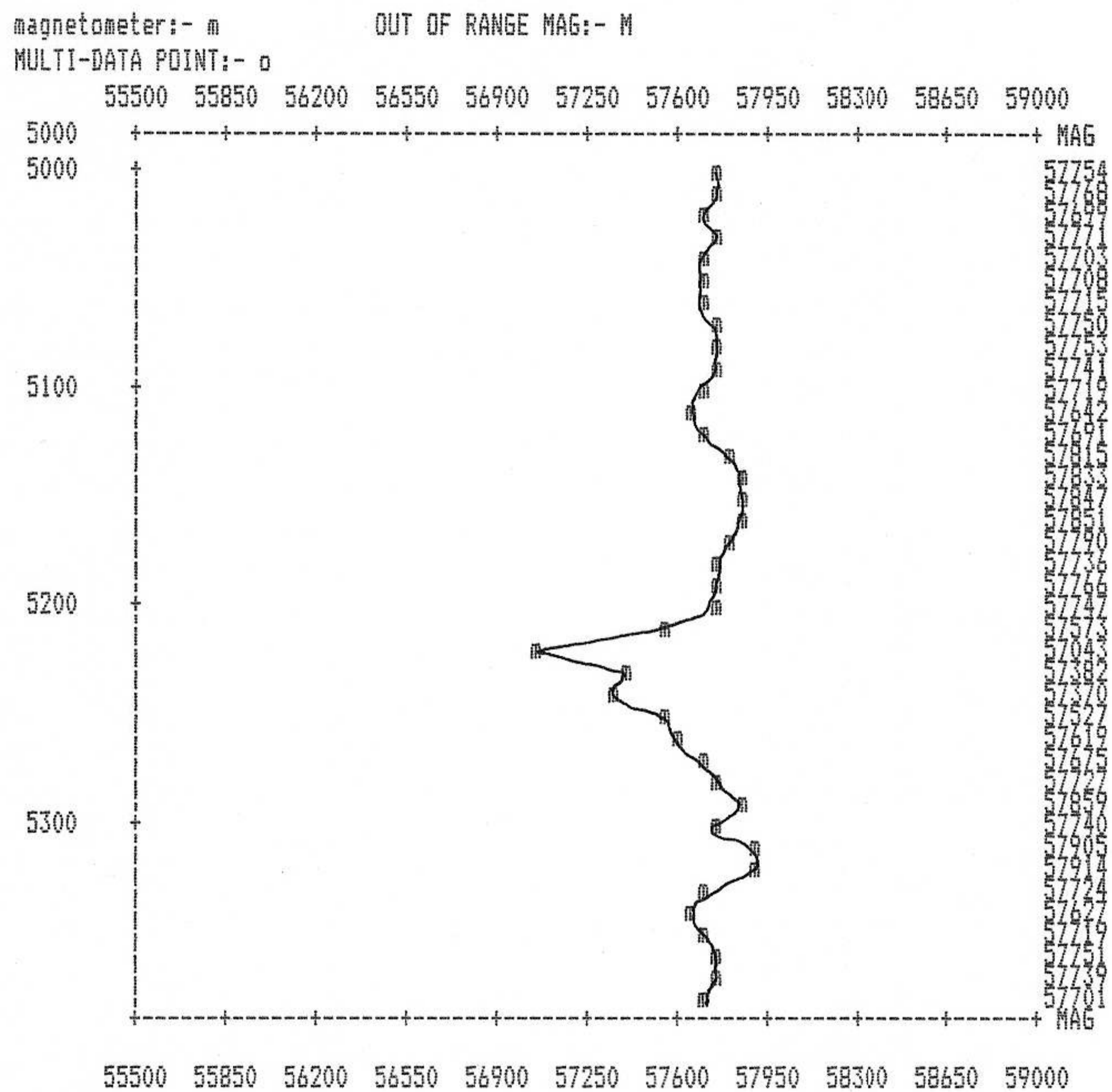


NOBLE PROPERTY
 Line: 7600 E
 Date: 89/06/14
 Station interval = 1 print position

magnetometer:- m OUT OF RANGE MAG:- M
 MULTI-DATA POINT:- o

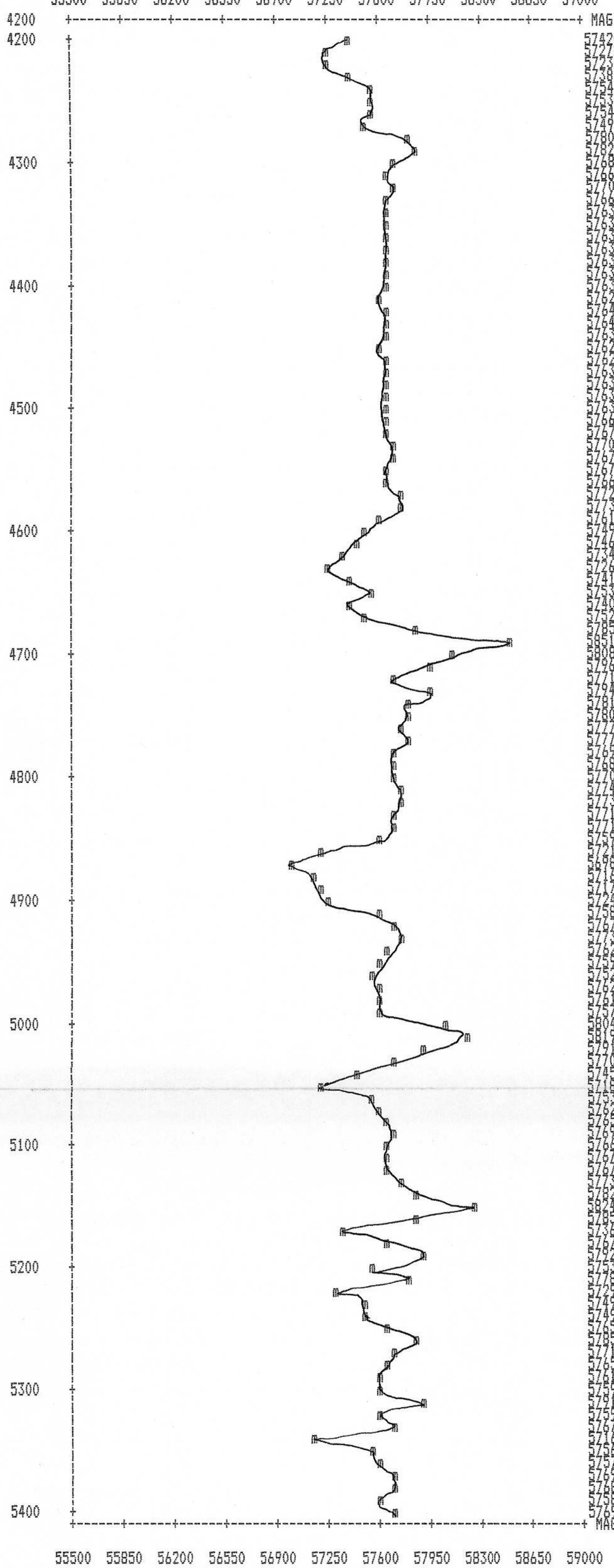


NOBLE PROPERTY
 Line: 8200 E
 Date: 89/06/14
 Station interval = 1 print position

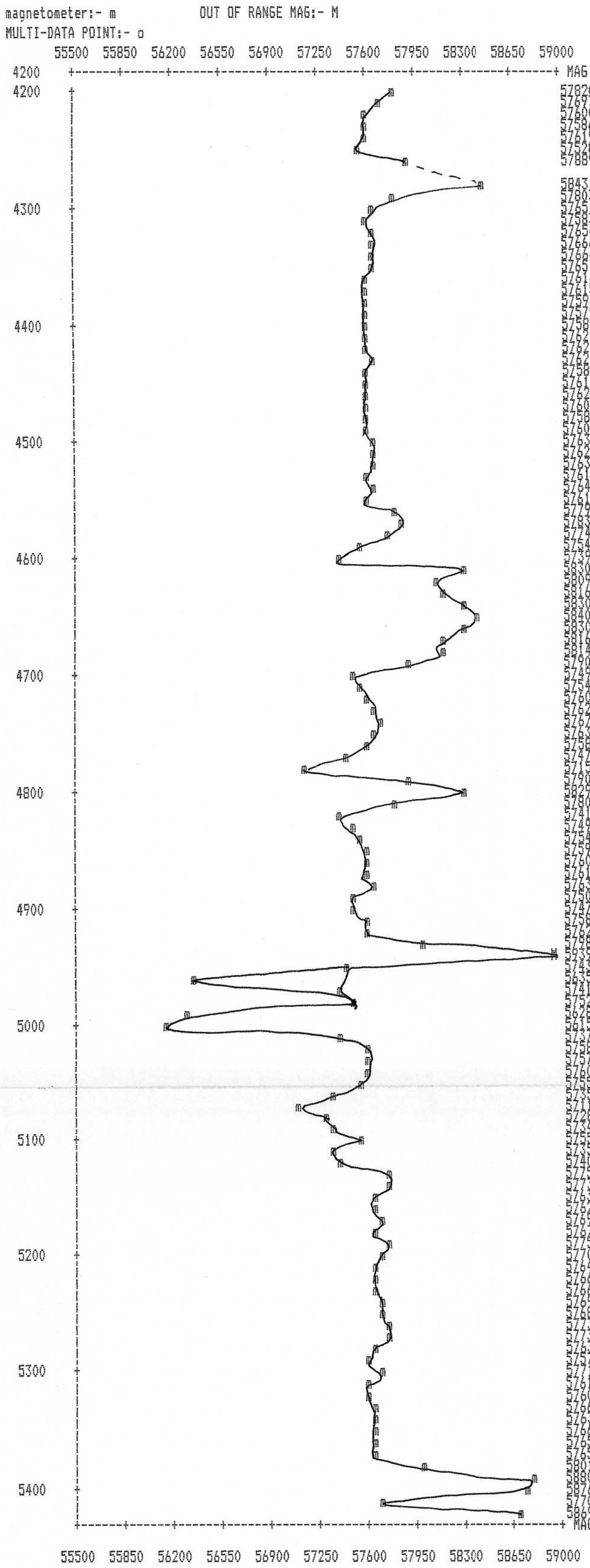


NOBLE PROPERTY
Line: 8300 E
Date: 89/06/14
Station interval = 1 print position

magnetometer:- m OUT OF RANGE MAG:- M
MULTI-DATA POINT:- o
55500 55850 56200 56550 56900 57250 57600 57950 58300 58650 59000

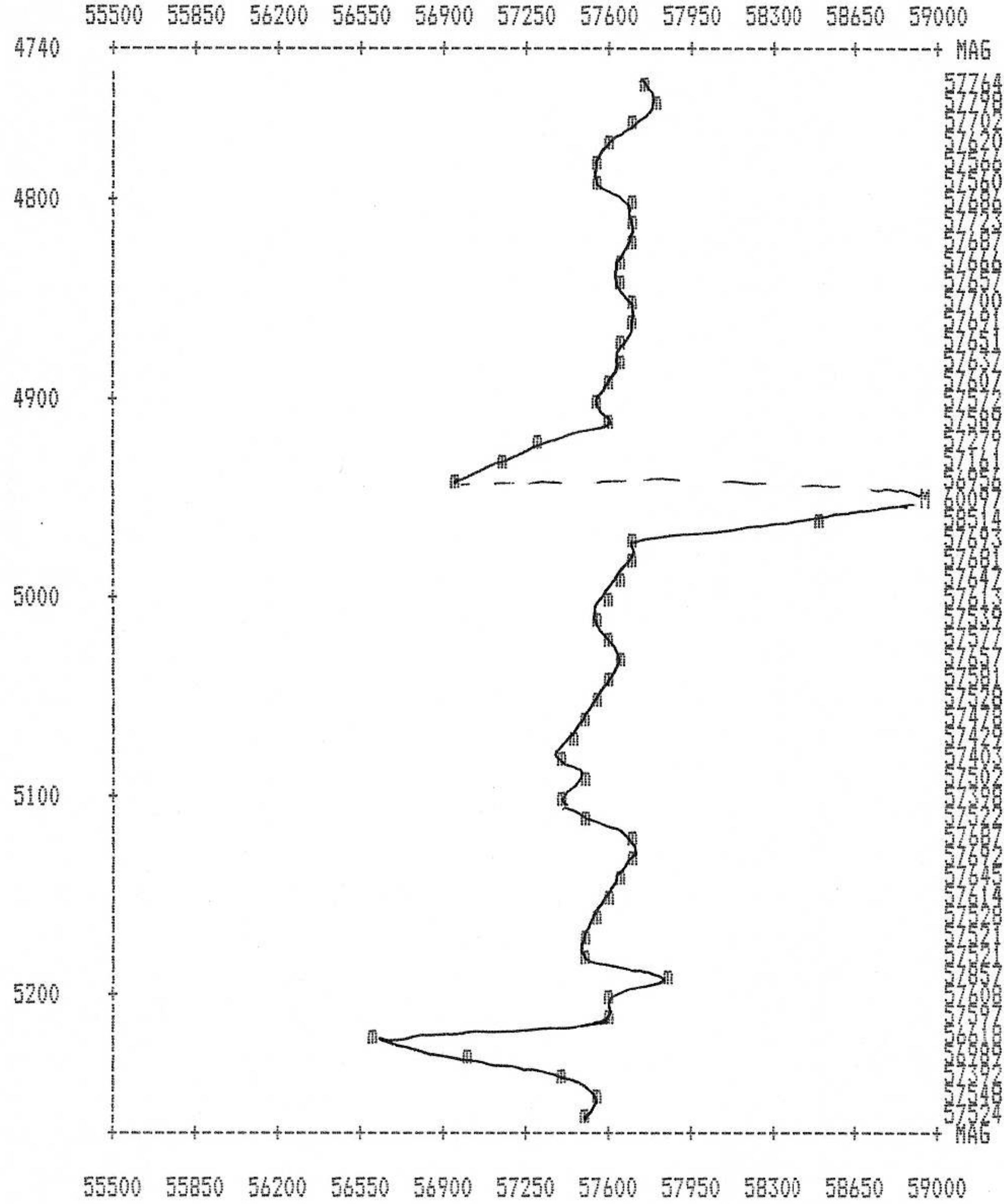


NOBLE PROPERTY
Line: B500 E
Date: 89/06/14
Station interval = 1 print position



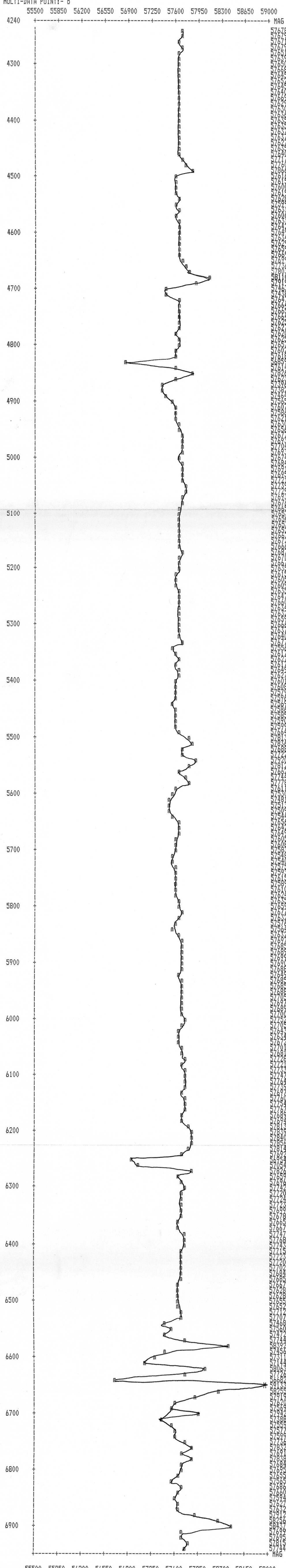
NOBLE PROPERTY
Line: 8600 E
Date: 89/06/14
Station interval = 1 print position

magnetometer:- m OUT OF RANGE MAG:- M
MULTI-DATA POINT:- o



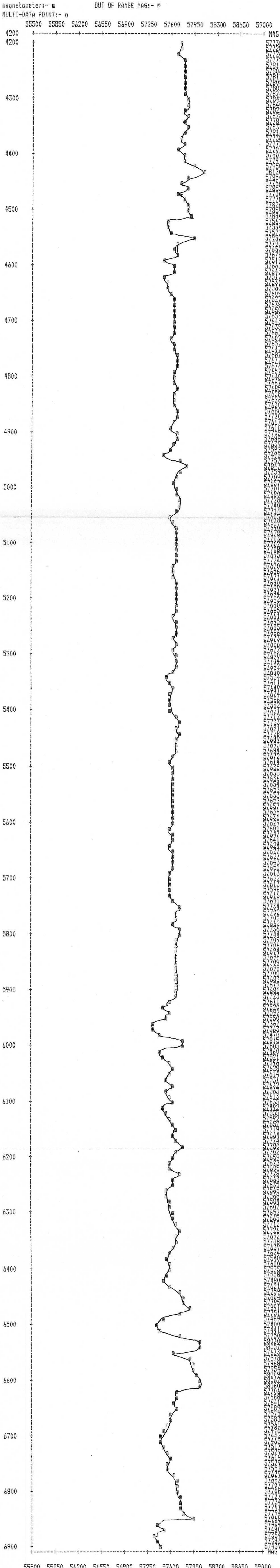
NOBLE PROPERTY
Line: 5100 E
Date: 89/06/14
Station interval = 1 print position

magnetometer:- m OUT OF RANGE MAG:- M
MULTI-DATA POINT:- o



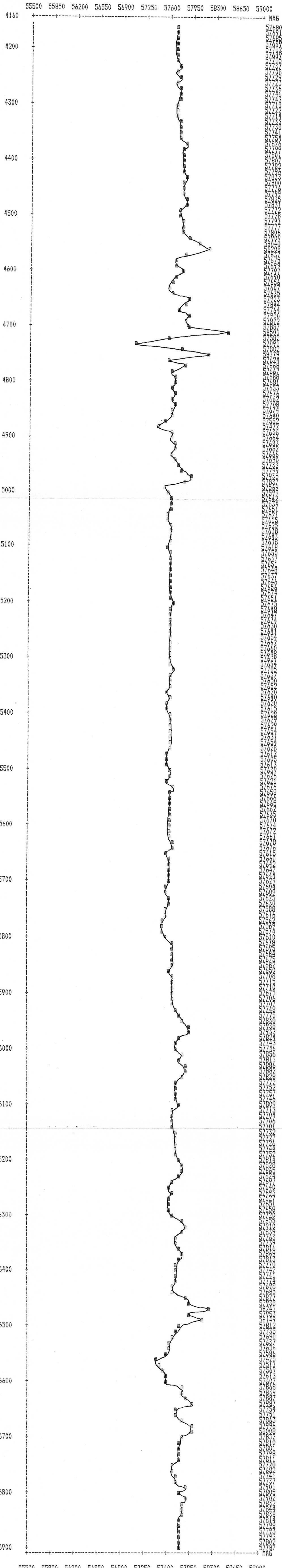
55500 55850 56200 56550 56900 57250 57600 57950 58300 58650 59000

NOBLE PROPERTY
Line: 5300 E
Date: 89/06/14
Station interval = 1 print position

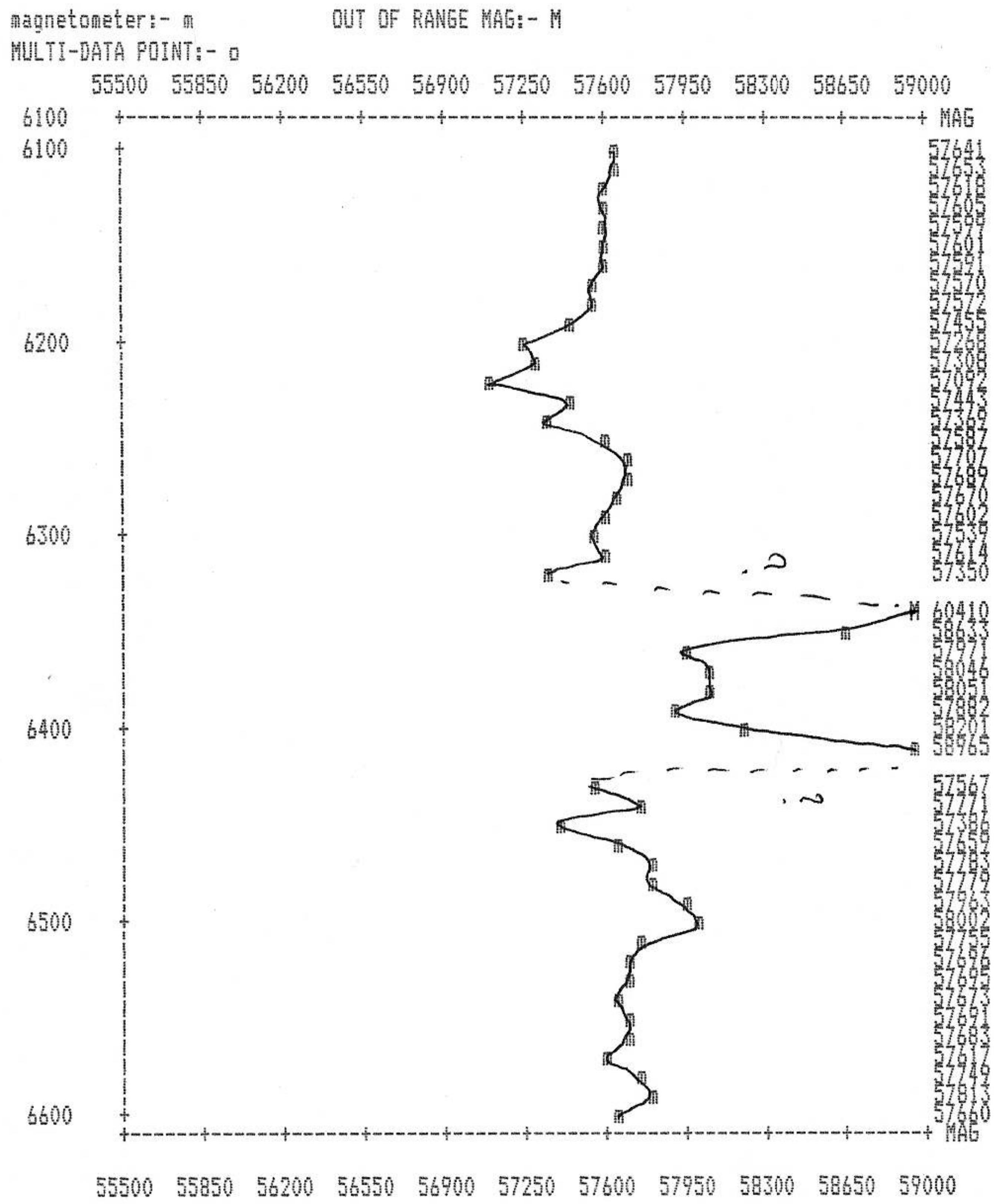


NOBLE PROPERTY
Line: 5500 E
Date: 89/06/14
Station interval = 1 print position

magnetometer:- m OUT OF RANGE MAG:- M
MULTI-DATA POINT:- o

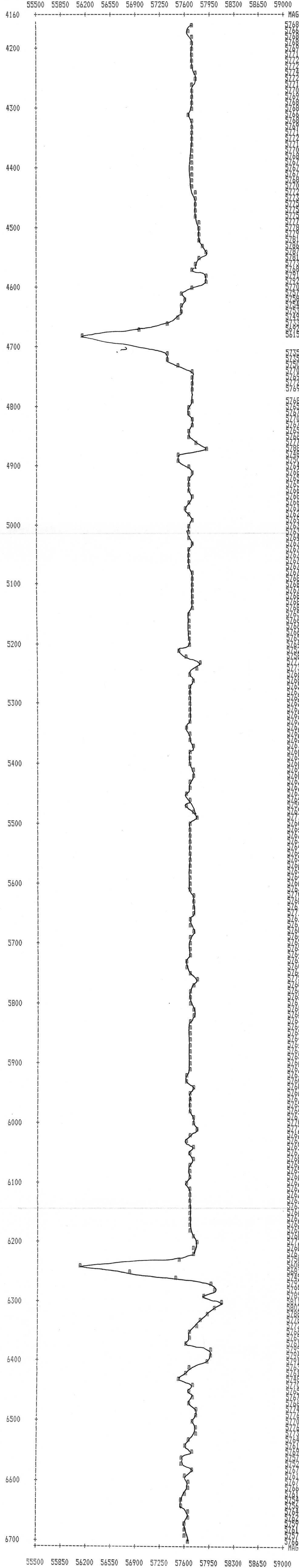


NOBLE PROPERTY
 Line: 5600 E
 Date: 89/06/14
 Station interval = 1 print position



NOBLE PROPERTY
Line: 5700 E
Date: 89/06/14
Station interval = 1 print position

magnetometer:- m OUT OF RANGE MAG:- M
MULTI-DATA POINT:- o

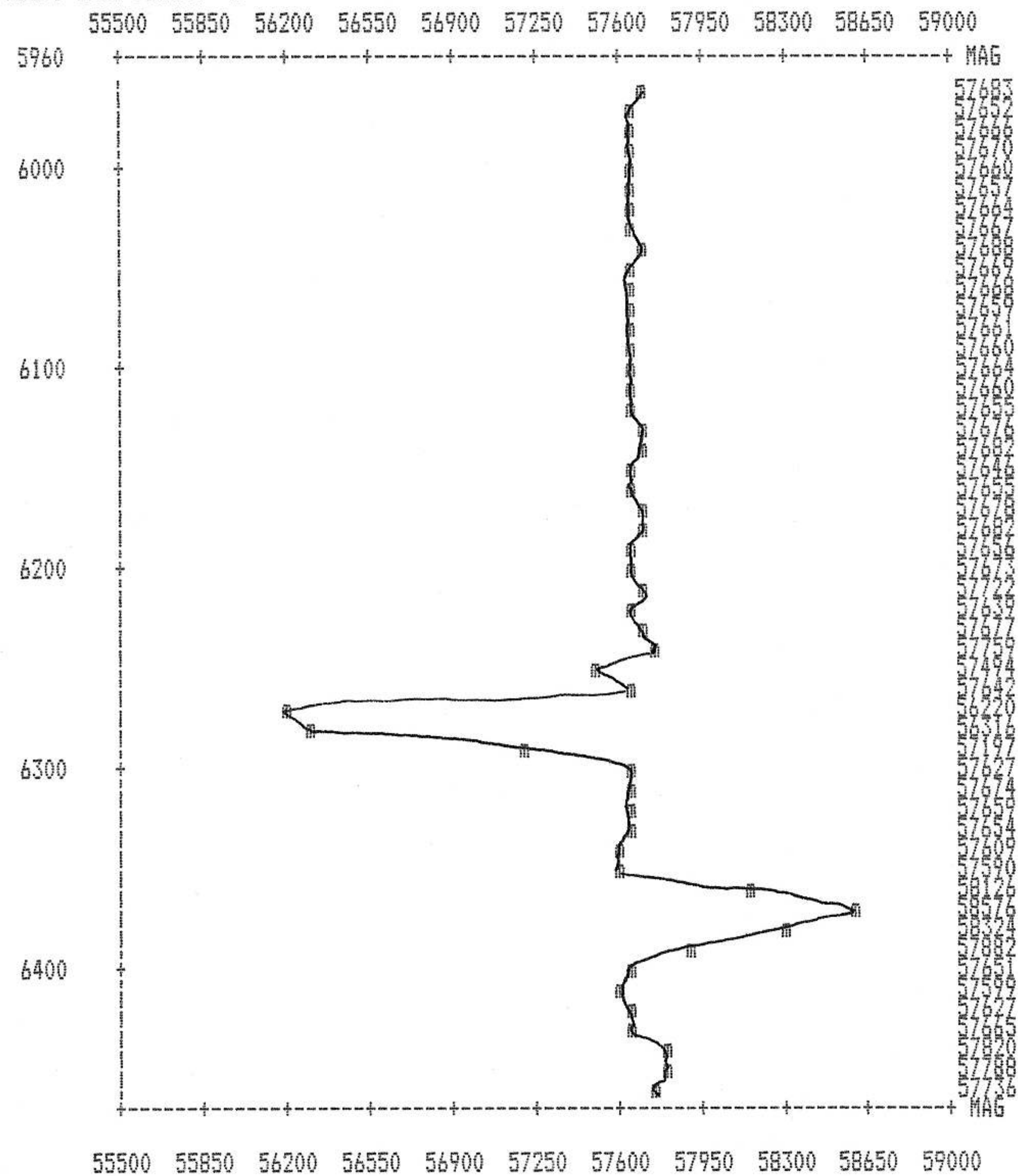


57683
57686
57689
57692
57695
57698
57701
57704
57707
57710
57713
57716
57719
57722
57725
57728
57731
57734
57737
57740
57743
57746
57749
57752
57755
57758
57761
57764
57767
57770
57773
57776
57779
57782
57785
57788
57791
57794
57797
57800
57803
57806
57809
57812
57815
57818
57821
57824
57827
57830
57833
57836
57839
57842
57845
57848
57851
57854
57857
57860
57863
57866
57869
57872
57875
57878
57881
57884
57887
57890
57893
57896
57899
57902
57905
57908
57911
57914
57917
57920
57923
57926
57929
57932
57935
57938
57941
57944
57947
57950
57953
57956
57959
57962
57965
57968
57971
57974
57977
57980
57983
57986
57989
57992
57995
57998
58001
58004
58007
58010
58013
58016
58019
58022
58025
58028
58031
58034
58037
58040
58043
58046
58049
58052
58055
58058
58061
58064
58067
58070
58073
58076
58079
58082
58085
58088
58091
58094
58097
58100
58103
58106
58109
58112
58115
58118
58121
58124
58127
58130
58133
58136
58139
58142
58145
58148
58151
58154
58157
58160
58163
58166
58169
58172
58175
58178
58181
58184
58187
58190
58193
58196
58199
58202
58205
58208
58211
58214
58217
58220
58223
58226
58229
58232
58235
58238
58241
58244
58247
58250
58253
58256
58259
58262
58265
58268
58271
58274
58277
58280
58283
58286
58289
58292
58295
58298
58301
58304
58307
58310
58313
58316
58319
58322
58325
58328
58331
58334
58337
58340
58343
58346
58349
58352
58355
58358
58361
58364
58367
58370
58373
58376
58379
58382
58385
58388
58391
58394
58397
58400
58403
58406
58409
58412
58415
58418
58421
58424
58427
58430
58433
58436
58439
58442
58445
58448
58451
58454
58457
58460
58463
58466
58469
58472
58475
58478
58481
58484
58487
58490
58493
58496
58499
58502
58505
58508
58511
58514
58517
58520
58523
58526
58529
58532
58535
58538
58541
58544
58547
58550
58553
58556
58559
58562
58565
58568
58571
58574
58577
58580
58583
58586
58589
58592
58595
58598
58601
58604
58607
58610
58613
58616
58619
58622
58625
58628
58631
58634
58637
58640
58643
58646
58649
58652
58655
58658
58661
58664
58667
58670
58673
58676
58679
58682
58685
58688
58691
58694
58697
58700
58703
58706
58709
58712
58715
58718
58721
58724
58727
58730
58733
58736
58739
58742
58745
58748
58751
58754
58757
58760
58763
58766
58769
58772
58775
58778
58781
58784
58787
58790
58793
58796
58799
58802
58805
58808
58811
58814
58817
58820
58823
58826
58829
58832
58835
58838
58841
58844
58847
58850
58853
58856
58859
58862
58865
58868
58871
58874
58877
58880
58883
58886
58889
58892
58895
58898
58901
58904
58907
58910
58913
58916
58919
58922
58925
58928
58931
58934
58937
58940
58943
58946
58949
58952
58955
58958
58961
58964
58967
58970
58973
58976
58979
58982
58985
58988
58991
58994
58997
59000

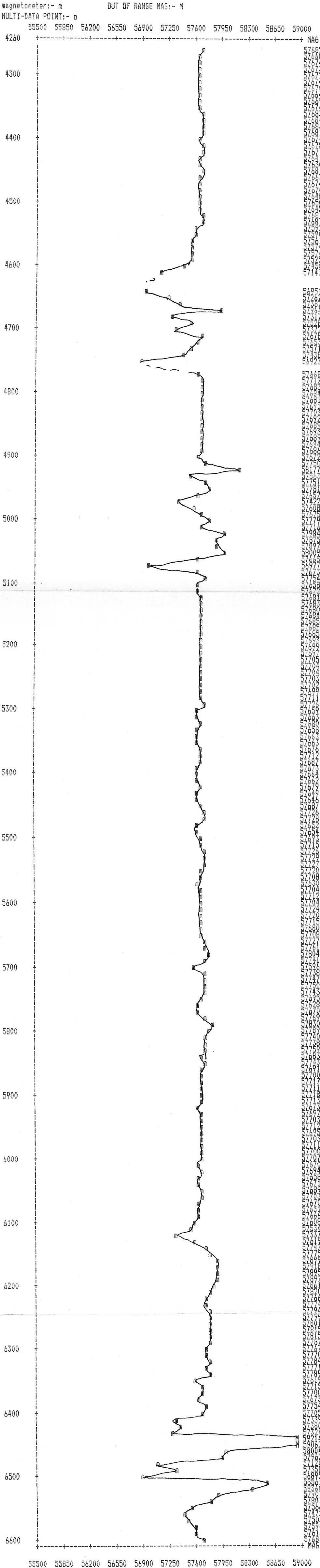
55500 55850 56200 56550 56900 57250 57600 57950 58300 58650 59000

NOBLE PROPERTY
 Line: 5800 E
 Date: 89/06/14
 Station interval = 1 print position

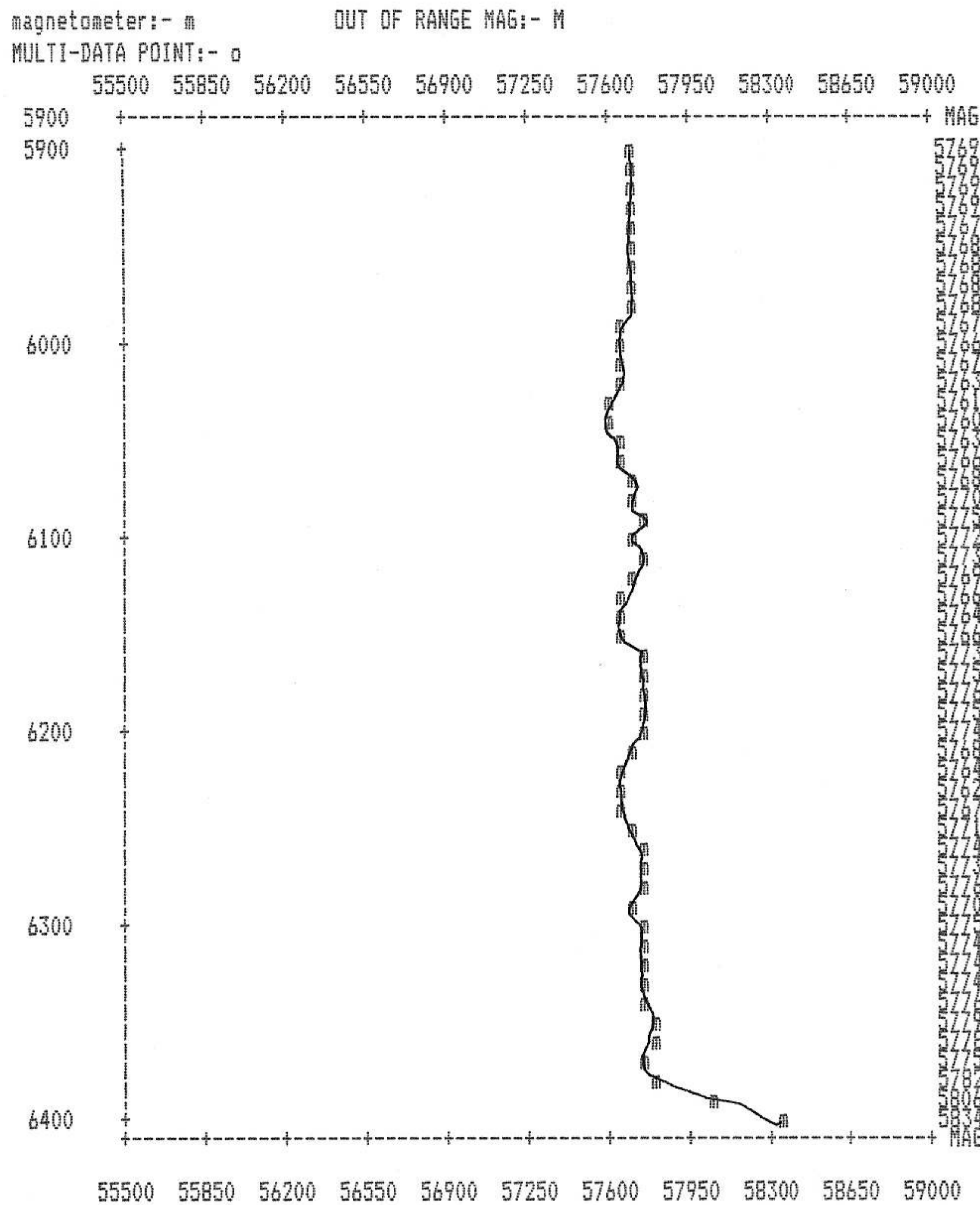
magnetometer:- m OUT OF RANGE MAG:- M
 MULTI-DATA POINT:- o



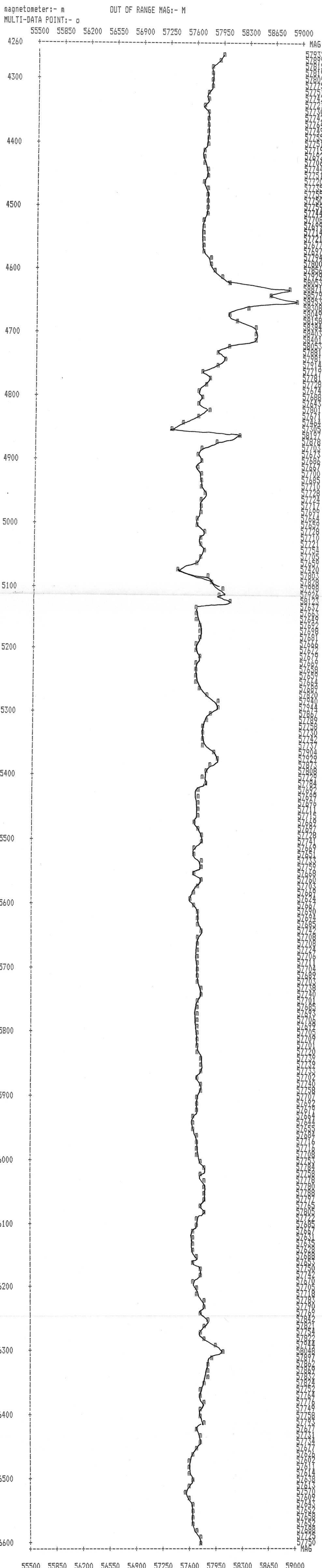
NOBLE PROPERTY
Line: 5900 E
Date: 89/06/14
Station interval = 1 print position



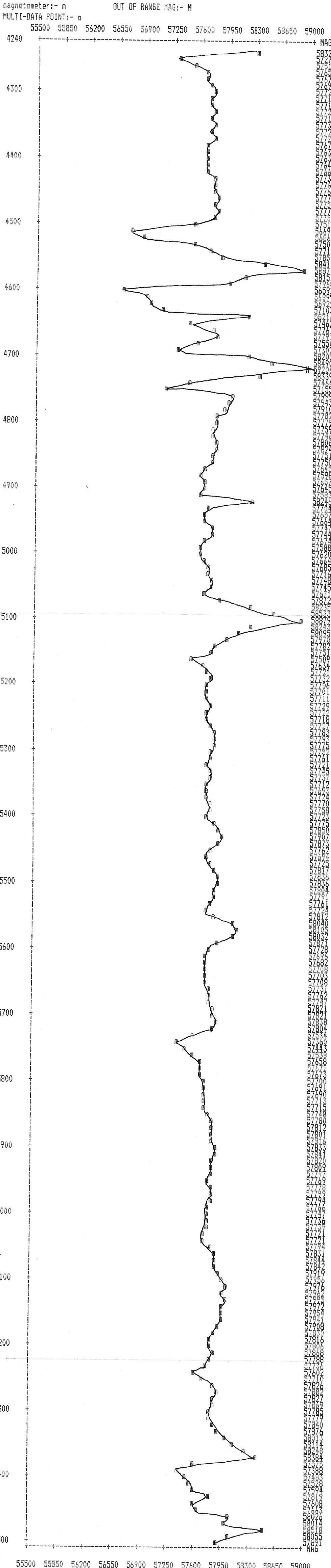
NOBLE PROPERTY
Line: 6000 E
Date: 89/06/14
Station interval = 1 print position



NOBLE PROPERTY
Line: 6100 E
Date: 89/06/14
Station interval = 1 print position

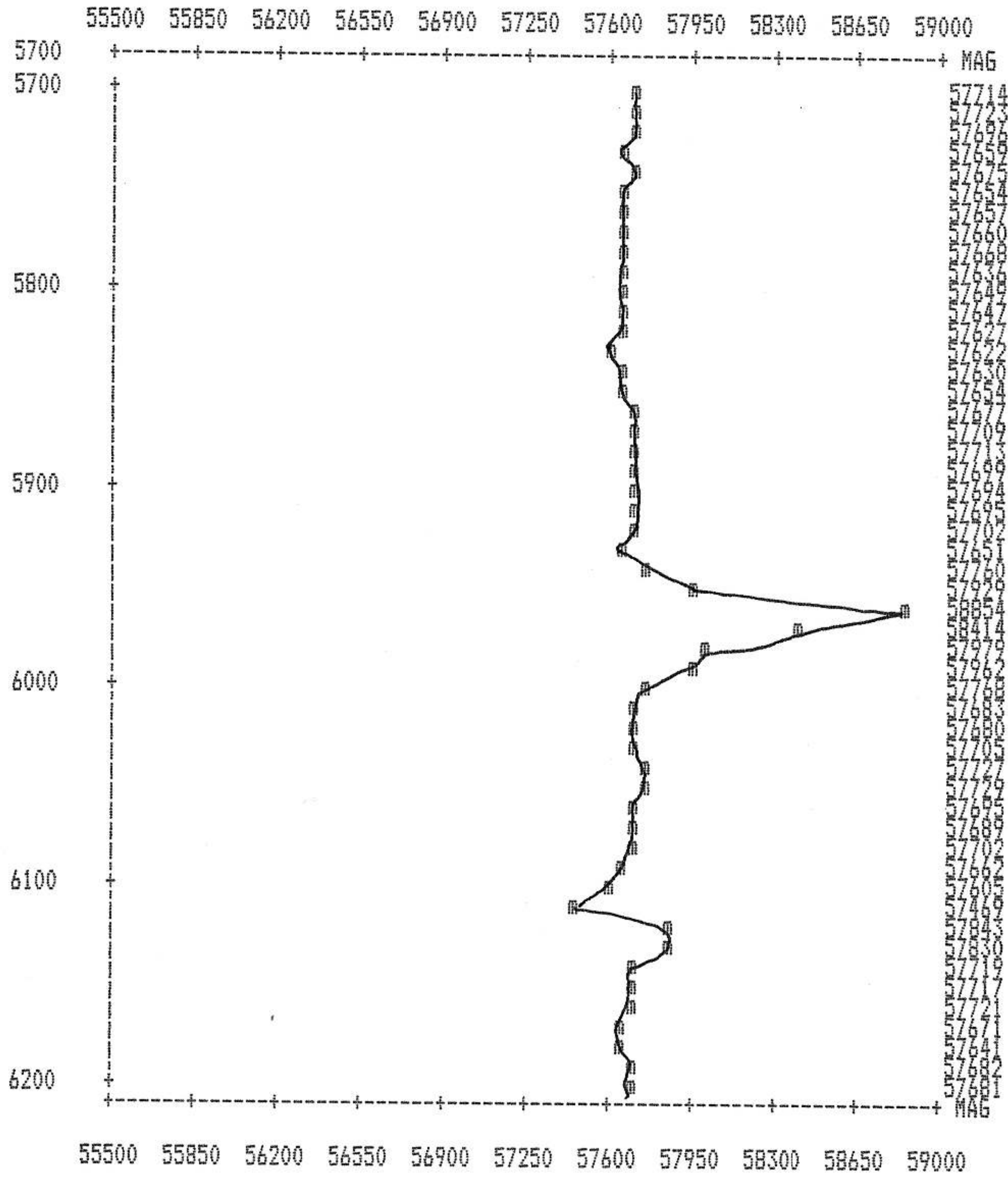


NOBLE PROPERTY
Line: 6300 E
Date: 89/06/14
Station interval = 1 print position



NOBLE PROPERTY
 Line: 6400 E
 Date: 89/06/14
 Station interval = 1 print position

magnetometer:- m OUT OF RANGE MAG:- M
 MULTI-DATA POINT:- o



NOBLE PROPERTY
Line: 6500 E
Date: 89/06/14
Station interval = 1 print position

