

Noble

862338

June 17

Outcrop (FERSENMEER)

L 83+20E 51+30N

Angular Subcrop in uprooted trees
 Fine grn - black, laminated Graphitic
 phyllite, Geophysical anomaly
 occurs in area. Possibly due to
 graphite. Specimen # 11 taken

Outcrop # 34008

L 8225E

5035N

Bull Quartz .5 x 2 in.
 Rusty, no visible sulphides

Outcrop L 8225E

5025N

along Road

Dety Quartz Sericite schist
 with Quartz, Magnetite

2-5' deep, no orientation

Flat, due to construction?

34009

696.83

1.7
/ 2
=

Outcrop (Mineralization)
on Road ~~START~~ 0.305
Approximately 2.3 km
from turn off to Lake Road.

June 18/87

Outcrop L8900E 5076 N

dark-gray - Black Phyllite, fresh surface is Black

Trending 058° ?
dip 28° South

Size .2 x .2 m Subcrop

fn grn, fn laminated, minor calcite

& minor graphic sections

Specimen # 12

Outcrops L8900E 5120-5138 N

80% mafic Tuff 20% felsic

MASSIVE, dark green-gray, minor white
sections, finer grained

trend 090° dip 05° \rightarrow North

Subcrop - Outcrop

Specimen # 13

Outcrop L8900E 5110 N

Massive / Poorly Foliated Felsic

Tuff or Sandstone, no orientation

.3 x 2.0 m, light gray, minor

preferred orientated mica

95% Qtz 22 mica

Spec # 14

Outcrop L 88+95E 54+97N

Black, fine laminated phyllite
minor graphitic sections
2m x 20m, trend 110 dip 20 N.

Outcrop L 89+00E 52+20N

Banded dirty Limestone
with Black phyllite sections

90% Ls / 10% phy

Trend 124° dip 7 NE

2 small outcrops under tree roots.

SPEC # 15

Outcrop L 89+00E 52+90-5300N

Felsic Tuff / SS

MASSIVE - Poorly foliated

medium gray - white, preferred
orientation of micas with fibrous

98% Quartz / 2% mica

Size - SP-Hy 10m x 3m

SPEC # 16

June 19

Outcrop 89100 E
53+35 N

2m x 5m

Fine gr. - laminated? (fabricated)
dark grey Matrix Tuff
grading into phyllite?
found 0640 clip 2 North

Outcrop 8900E
53+75N

SPEC # 17 Graphitic Phyllite

Intermediate Tuff with Graphitic
interbedded phyllite
found 0650 Dip 70 N
Large outcrops along top of Ridge

Outcrop 8900E
5410 N

Intar tuff, fine bed
sections / minor graphitic

R. D. PENHALL LTD. MADE IN VANCOUVER, CANADA
DUKESBAK WATERPROOF

June 18

Outcrop L 87+20E

54+10 N

Black Phyllite Bedded

Graphitic Phyllite, Laminated
in gn, trend 100° Dip 12° N
1 x 1 m. Spec # 18

Outcrop L 87+10E

53+30 → 53+95 N

metalic → felsic Tuff

Trend 110° Dip 23° N

metalic at Bottom → felsic Top

felsic (Darker Tuff?)

with felsic fragments (reworked)

Outcrop L 86+95E 52+95 N

Limy metalic Tuff

dark from black, massive →
partly foliated, in green

Spec # 19

Outcrop L87+00E 52+35 N

Very fine grained mafic Tuff 90%
Phyllite 10%

Dark green-black

trond 110° dip 2 N

.5 x 2 m

Outcrop L87+00E

52+10 N

Black Phyllite, fine, foliated

1m x 2m, matrix Tuff

Trond 1095° dip 20° NNE

Jelsenmeer

20 x 50m

Black Phyllite

graphitic sections

Angular, tree roots

8700 E

5075 N

June 18

Subcrop Crystalline limestone

bluish-grey-white, crystalline
Limestone .5 x .5 m, Fe surface
4990N 8710E

Subcrop - Along Road

Sample # 34010

L8715E 4882N

Massive Quartz - Chlorite schist, 5-10% py
rock is poorly foliated, surrounding
country rock is felsic - garnet schist
- rock is med green - white

Spec #20

Outcrop L 8802E 4865N

Sericite Quartz - chlorite schist
well foliated, rusty surface
no sulphides

Outcrop 8810 E

4862N

Chlorite schist

well foliated

trend 100° dip 2° south

Outcrop 8858E 5023N on Trail

Brown surface, white fresh

recrystallized limestone trend

122° dip 0°

adjacent to med-dark grey

Phyllite trend 122° dip 15° S

line in. 4m x 10m

Outcrop on Trail

5010 N

8840E

Fn qtz - dark green - black, Quartz

eyes, Matrix Tuff 2m x 5m

Spec # 21

mine Int. Fel sections

Trend 100° dip 20° E

Subcrop Black Phyllite
Rubble, in situ, finely
laminated
R 5000N 8838E

Outcrop Location 8840E
4950N

Beau surface, white fresh
teocrystalline Limestone surrounded
by highly brittle, incompetent grey
phyllite

Outcrop Sericite-Quartz Sch
Trend 020° Dip 12° E
Location 4900N
~ 8840E

1m x .5m
Rusty surface, no sulphides

June 19

Sample 34011

Outcrop 2x1 m along Road

102m west of Line 81+00E

Rusty Quartzite; Quartz
schist 5% pyrite, well
foliated.

Trend 150° dip 10° E-st

Road at L 85+00E

49+57N

* Outcrop 1m x 2m

L 85+00E

49+64N

Brown Red Quartzified Surface
Bright white, med-coarse
crystalline limestone

Trend 156° dip 20° E

fair Exfoliation

* Outcrop in Pit L 85+05E

49+75N

Trend 124° dip 25° NE

White Quartz schist - outcrop
of Silicious white-blue limestone
massive limestone
foliated schist

LEVEL

R. D. PENHALL LTD. MADE IN VANCOUVER, CANADA
DUKSBAK WATERPROOF

Road at 85+00 E
49+97 N

— Line 85+00 E

51+15 N - 51+60 N

felsitic, Angular dark grey
→ black phyllite under
tree roots

— Ravine at 85+05 E

51+65 N

trending 087° flow to
East (dry)

— Outcrop Line 85+02 E

52+45

Stair } Limestone, multi-bed
slope } fractured, crystalline, beddy
Looking trend 094° dip
40° N, 2 x 1 m

— Outcrop Line 85+02 E 2 x 5 m

52+50 N

finely laminated Arg. sh.
black trending 098° dip 42° N

June 19

X Outcrop L05+00E
53+00N

Base of Slope

2 x 5 m

(MASSIVE)

mafic Tuff with quartz
augers felsic fragment
inter bedded ^{Basalt} ~~Basalt~~ → Rhyolite

composition trend ~ 102°
dip 15° North

Spec #22 Felsic Tuff
dark grey - black) with white

X AT approximately
52+90N

85+00E

Mafic Tuff (felsic
bits of Amphibole)

X Outcrop - Middle of steep slope

53.10 - 53+30

20m x 30m

trend 102° dip 24° N

well foliated mafic
to felsic Tuffs

(Better than above
rock but same
composition)

LEVEL

* Outcrop L8500E

5340 - 5365N

Foliated Dacitic Tuffs

50% with minor mafic sections
25m x 50m, near top of
Ridge

trend 110° dip 22° North

* Outcrop L8500E

5370 - 5375N

5m x 100m

trend 095° dip 20° NNE

mafic-Intermediate Tuff

50% Foliated

dark iron-black section

50% Dacite - Dirty Dacite

* Outcrop L8500E

5382N

1m x 50m

Argillite well defined
trending 084° dip 22° N

Spec # 23

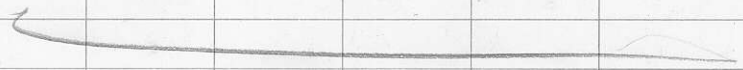
Top of Ridge

June 19

L 850VE

5340 - 5360N

Swamp with water
Quite extensive continues
for probably 100m



Outcrop Top South Side of Ridge

X L 83+00E 5410N - 5370N

SPEC # 24 Contacted Mafic-Int Tuff
Rock Geochron 34012 - Qz vein
3cm x 10cm

mafic, fine grained with / to
intermediate tuff. Contacted
to trend 098°. Dip 20-85°

Quartz vein in 112°
a remnant with feldspar
good feldspar. Black, Arg. White
Angular float just above
outcrop.

R. D. PENHALL LTD. MADE IN VANCOUVER, CANADA
DUKSBAK WATERPROOF

◁ 8300N

5370-5350E

Dacitic Tuff with
minor mafic sections

80% Dacite

spotty outcrop along
gentle slope

trend 090 d. 28 N

massive / foliated sections

◁ 8300N

Trend 080° dip 26° N

5320 - 5340E

20% } Dacitic Tuff

80% } mafic Tuff

gentle slope } felsic top / mafic bottom

foliated top / massive

bottom

dark green-black below, grey-white
top. in sin

20m x 50m

◁ 8305E 53+02N

Felsic Tuff, massive

1 x 2 - green-white

poor foliation

June 19

B 83+10 =

5000 N

well foliated Quartz
sericite schist, rusty
surface, no silicates visible
Trending 135° dip 10° NE
approx 5m x 2m length (w-e)

Road at L 83+00 E

4985 N

Outcrop at Road

L 83+00 E

4985 N

5m x 2m

Same as above
Qty - ser sch. Ox. sized
weathered, rusty, more
sericite.

Hand Trench trending North

5m long x 1m wide

at 4980 N, 8302 E

R. D. PENHALL LTD. MADE IN VANCOUVER, CANADA
DUKSBAK WATERPROOF

HAND TRENCH 4m x 1m

4944N

∠ 83 12E

Rx Geoch 34013 GRAB

Spec # 25

Quartz-chlorite Schist
Dip Foliation 57° Sulphide

To, Top of Nose in
antiform structure
(at the axis)

rocks dip from 5° to East

to 5° west axis trend = 99°

Plunge to North at 05°

* Hand Trench due North

4m 4m x 1m

more of a Quartz Sericite
composition slightly better
foliation, ~~dip~~ at 7°?

Strike - 50° dip 5' S.

axis & plunge

Sheet 17

Line 8100E

50+90N Main Road

50+82N Catrail

L 8100E

52+85N

Dirty limestone, Banding, in beds of
Mafic tuff dark grey - black.

Wend 804 dip 14° N

overlain by Mafic Tuff

fine grain

5m x 35m - thin

Limestone dark grey - grey

some white bands

X Line 8100E

53+15N

1m - 2m

mafic - intermediate schist

Quartz, Angers, Foliated

fold 102° dip 18° N

R. D. PENHALL LTD. MADE IN VANCOUVER, CANADA
DUKESAK WATERPROOF

108 31N

* L 81+00E

53+70 - 53+50N

INTERMEDIATE Tuffs

alternating mafic to felsic

sections generally mafic

Diabase, fr. fin, MASSIVE

(poor foliation)

trending 108° Dip 31N

* L 81+00E

1m x 5m

53+81N

Spec # 26

MAfic schist more inter section

grad. up to Ag. Mt? more

foliation fine last outcrop

fr. fin dark green - black

trend 090° Dip ~~32~~ 32° N

L 81+00E

53+90N

foliated fr. fin mafic Tuff

1m x 2m dark green - black

June 19

X L 8100E 3m x 20m
54+18N
Trend 120° dip 20° N

felsic-Dacitic Tuff with
granitic dykes overlain
back for 9m, whitish
Basic Tuff - massive

X L 8100E 4x40m
54+32N

Trend 106° dip 28° N
Dacitic Tuff
NEAR Top of Ridge
grey, massive, (less whitish)

2 81+50 54+22N
Matrix well stratified

Tuff 1x2m
dark grey-black for 9m

L 81+10E 5438N Top of Ridge S

1m x 1m Basic (cap) -
phyllite for 9m, black
Trend 092° dip 28° N

R. D. PENHALL LTD. MADE IN VANCOUVER, CANADA
DUKSBAK WATERPROOF

L 8100E

55+40N

Dry Gully trending 094°
Drainage to East

Outcrop L 81+00E

55+50N

trend 094° dip 30 North
Very fine grained mafic
tuff almost argillite

Cabin Line 79+00E
56+10N

Outcrop 7895E

x

55+95N

2 x 5m

Trend 126° ~~2~~ dip 26° N

Limy fine grained mafic Tuff
alternating grey - black, foliated.

June 17

Outcrop L7905E 1m x 5m

55+07N

Diaty Banded Limestone overlain
by Argillite

Trend 100° ~~25~~° N

Top of Ridge - South side

⊗

* Outcrop L7902E

54+85N

Trend 169° dip 30° NE

Well foliated Black

Argillite in grn

Gully trend 150° from 5460

Outcrop L7900E

54+50N

* Limest. Matrix Tuff, very
fine grained, foliated

trend 100° dip 34° N

10m x 50m limy bottom, similar
to best bluff on line. (8100E)

L 7900 E 2m + 1m

52+95N

Basic Tuff (massive part of interbed)
Trend 106° Dip 18° N
White color

Road Main L 7900 E
52+70 N

NOBLE

June 20

Main Trail L 77+00E
53+30N

✓ Outcrop L 77+00E Trend 104
55+35N Dip 21°N
5x7m 10x5m

fol - Mafic Tuff, very fine gr (Arg) → dark, calcareous

fol - Limestone dark grey-black det.

MASSIVE felsic Tuff, Quartz Bull, crystalline, mica with
grey white calc.

✓ Outcrop L 77+00E Trend 104°
55+42N Dip 23°N

Limestone

grey white - white in xlm

✓ Outcrop L 77+05E 55+60N

Trend 106° dip 19° N

Fine grained Mafic Tuff, dark grey-black, good - well foliation.

✓ Outcrop L 77+00E
56+42N

Grey felsic Tuff 1m x 1m
MASSIVE, dirty felsic tuff

✓ Outcrop L 77+01E
56+52N

Cleaner Grey-White felsic Tuff
MASSIVE, minor folding, contact
Trend 122° dip 20° N

✓ Outcrop L 77+00E
56+76N

Foliated chloritic Mafic Tuff,
~~med gray~~ - dark greenish blocks
Trend 132°, 15° dip N

Small quartz auger
1m x 2m

✓ Outcrop L 77+00E Trend 135° dip N
56+94N 1m x 10m

Foliated Mafic Tuff
med gray - dark gray.

✓ Outcrop L 75+00E
57+55N
Trend 124° dip 23° N

7m x 25m
Foliated, fine gr., Mafic Tuff
dark gray-black almost
Aq. like (is more arg. like)
more graphitic sections

Outcrop L 75+00E
57+36N

✓ 10m x 30m spotty outcrops
Massive less foliated felsic
Tuff light gray-white
Kinked for dip 20° N

✓ Outcrop L 75+00E
57+27N

80% Mafic, foliated, dark gray-black
20% Felsic, more massive, Btm
of outcrop. Felsic is drab, whitegray

✓ Outcrop L7500E 1x2m
57+13N

Dirty-Clean Qtz ser schist
well foliated Trending
106° dip 35° N, (Fe mine)
med gray color

✓ Outcrop L7500E 1x10m
56+75N

Massive, fractured, light gray, felsic
Tuff Trend 106° dip 25° N, Bull
Quartz

✓ Outcrop L7500E
55+58-55+73

20m wide spotty limestone ^{+50m} quite extensive
light gray-white banded
Trend 112° Dip 25° N

✓ Outcrop L7500E 1m x 1m
5505N Weardip
Spec #27
Rock 34014 SCARN

✓ Ch-Ep 88 (Fe in mm) Limestone
Massive no structure 2% s/p

✓ L 7500E 2m x 5m
5464N

well foliated Fe, Quartz, Ser,
Quartz Ser ch. S. list up to 1/2 m
trend 106 dip 16N
Spec # 28 # 31015

Road L7500E
5410N Road

✓ L 7300E 3m x 100m

56+30 N ← 56+38 N

Banded white, gray limestone
trending?

✓ L 7325E 56+40 N 2m x 5m

Black Graphitic Argillite
in pm,

Qtz veins trending ~170° dip
vertical 50 east of L 7300E

✓ 79+30E Sample #34016
51+60N Spec #29
Qtz vein? in old trench
along road by, slope gal, po

✓ 79+32E Rubby Quartz-Smelt
51+58N minor chlorite chert
2m x 1m trending 088°
dip 35° N. well
foliated.

Trench Ends at

79+12E
49+85N

DYKE AT 5000N 79+12E

✓ mafic-Intermediate
Gabbro-Dioritic Dyke 113°
SPEC#30 Dyke trending
with rubby Sericite, Fe schists
well foliated, minor chlorite
Sections trending 090°
dip 10° N

June 20

✓ L79+12E Subcrop
50+14N

Quartz vein / Stringer, Sericite
abundant, 120 ps

Sample # 34020

Creek - 5090NE 7900E

Road at 5090N L79+20E

7900

OLD Trench at

5140

L1920E 5140N

20

✓ well foliated Sericite
Quartz string

trend 132° dip 8° NE

Sample # 34017

SPEC # 31

Trench 25m x 1m weathered
outcrop

OLD DRILL HOLE AT
L7735E 5142N

END of Trench

Outcrop L 7735E
5142N

2x2m
Rusty Quartz-Sericitic schist, numerous
Quartz boulders. Mn stain?

Spec # 32.

Sample # 34018 Schist

Sample # 34019 Quartz boulders

Rusty Ser: sch, v minor pyrite

NOBLE

June 21/88

Working on Trench/Road between
lines 8100 & 8300E

* approximately 110 m below road
subangular - subrounded MASSIVE
Type - fine coarse crystalline, magnetic
∴ Po. Sulphides look to be replacement

Above rocks are highly altered and
friable probably due to shear/fault zone

Sample 34021

Sulphide

Spec #33

Sulphide

* approximately 95 m below rock
highly fractured & altered Black

Graphitic Argillite

Trend 118° dip 12 South

Spec #34 1m x 1m

* approximately 80 m below rock

highly sheared outcrop 1m x 1m

Black graphitic Argillite / Sericitic

schist, (bleached matrix)

dirty volcanic schist.

Outcrop 3m x 1m

53m west of Line 8100E on
the South (Skene) Road

Quartz vein / Bull Quartz largest
Quartz system seen yet. Rusty,

Apparently surrounded by
Dark Sericite Rusty Schist.
Apparent trend 130° Dip 85° west?

Sample of Quartz Vein 34022

SPEC # 35

* Outcrop approximately 10m
west of last outcrop:

63m west of L 8100E

outcrop is 1m x 5m

Black graphitic Phyllite
trending 100° Dip 11° South

* Note Mafic Dike rocks

Float: Subangular only in this
area suggests fault / shear zone.

Outcrop L 7900E 49+12W

TYPICAL mafic Dyle

2m x 5m

Sub Outcrop L 7700E 4950W

Diety Quartz, Surtite Shist

Sub Crop L 7910 E 4932W

TYPICAL mafic Dyle

✓ TRENCH BETWEEN ~104' length
L 7100 E - 7300 E

Trends 200° Top Ends by
Creek with good flow in water
Trench on North Road just
~45 m past turn off

~30m from Top of Trench

Spotted Phyllite - Surtitized →

very fine grain mafic Tuff

rubbly outcrop

approximately 25m below last outcrop

Spotted Quartz Sericite Schist

Trend 118° dip 13° South

$2m \times 1m$, minor Quartz, Bull

$\approx 25m$ from bottom end of Trench
dark grey - black graphitic Arg. like.

LINE 7100E 48+50N Road

outcrop at Turn in Road

located at ~~8~~ 5000N

7040E

trend 129° dip 8° South

well foliated Sericitic Quartz

Sericite Schist

$2m \times 2m$ same rock

20m on Strike to west

$5 \times 4m$, minor Bull Quartz

rusty, 1 Pyrite Cube, cubic pyrite $\ll 1\%$

In country rock, all cubic

Road crosses line at 710DE
501-80N

Outcrop same location

1m x 1m well bedded

Highly Sericitized yet less
fractured, S. dipping mafic

Intermediate Tuff, minor
pyrite cubes

trend 090° dip 10°S

Jointed 150° vertical prominent
020° vertical

Outcrop along Road

L 71+4DE 5240N

trend 094° dip 2° north

Roughly bedded S. dipping mafic

Intermediate Tuff

Same outcrop at

2 x 2 m

L 71+05E 5240N

June 22 1988

Sample #34023 4.5m in

Trench

Top location 85+25E

Spec #36

49+60N

L 85+25E 49+56N

Sample #34024 Fe, Pt₃-Ser-Ch, py massive

located on Road at

6.5m West & 2 1/2 m North

of trench bottom

85+17.5E 49+43.5N

Sample # 34025 Same

5.5m west of Trench Bottom

on Road

85+18 SE 49+35 N

Sample # 34026 Same

1 meter south of Trench

85+24E

49+40 N

ADIT?

Sample # 34027

Massive B

34028

String

85+29E

34029 +

Spec 37 Re St

49+54 N

83 + 24, 49 + 41

L 85 + 45E

49 + 90N large E. exposure

of Limestone / Dolomite type

Banding structures

dark bluish grey - white

white - dolomitized (more typical)

minor Sensitive zones with Limestone

confused orientations (contortions)

~ 140° dip; 20° NE

Sample # 34030

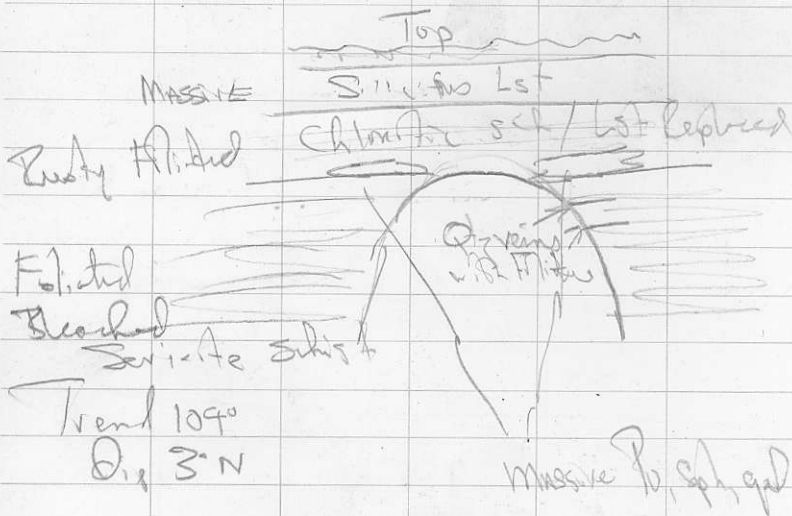
Spec # 38

85 + 29E

49 + 44.5N (1.1m)

Rest of less to, con, sh, K3

Location



Sample Location LB461E
 # 34031 49+49N

Location #34032 84+70E
 # x l m on 49+60N
 Crevice of Road (west side)
 massive Po, minor sph, gal

Location # 34033

L 84+160 E

49+58N

curved Road east side
Same Rock as at 34032

Mine Rusty (Py) SW SW at

L 84+160 E 49+39 N

Top of Trench located at

49+51 N

84+30 Trench 180°

Length 16m → South

1 meter wide

Sample 34034 Grab

Massive to, m. m. schalinite 1/2

Location 49+60 N 84+30 E

Sample # 34035 Spec # 39

50 Py, 50 schalinite

Location 84+30 E 49+51 N

Notes about Trench

Recrystallized Lot 3 at top
of trench generally massive.
Underlain by Sericite schist
underlain by Muscovite
mineral pyrite, sphalerite.

(Very confused orientation)

at Top end of trench massive
P₀ at least in thickness
to the south it pinches
out (at ~ 49+56 N)

the py & sph are underlain
by ~ 30 cm of Sericite-ch.
sch. which contains

The contoured schists are under
lain by large bull Quartz
veins (no sulphide) with no
preferred orientation in Sericite schist
sch. s.t. This is similar
to last trench (Ad. 4) and
the road sample above.

TRENCH

Top at 84+11E

49+63

approximately 13m long trending

40° for first 7 meters

then 130° for last 6 meters

add at top end

Geology Somewhat as others

Pe - Lts cap / sur sch / Massive sph /
massive Po, minor cap / sur sch /
thin

Samples 34036 - Massive sph / b

34037 - Massive Po / cap

Spec # 40 Massive sph

TRENCH Bottom at

84+00E 48+60N

extends 14m north

trend 130°

5m from bottom Massive

sph / b 5cm wide

in crystalline host with

5% combined Pb-Zn

LEVEL

Sample taken # 34038

↳ 84+00E

49+64N ↓

54 L 20N
1100E

June 23/80

Spec #40 last Sample

OPEN TRENCH GENERAL TREND 102°

D. N. Trend 100° dip 45°

11+38E 54+66N

Outcrop at

11+05E 54+25N 3m x 10m

Highly FRACTURED Re-crystalline
Lst. Numerous Qtz veins / stringers with
random orientation, sulphides (massive
Py, Sp_2 , gal) contained along with Qtz
stringers. Re-crystallized, massive reddish
brown surface, marble grey white
interior.

Massive Py, Sp_2 , gal ~ 3cm thick
on north side of outcrop
sulphides have steeper dip than
rock

Rock dipping 8° N trend 100°
Sulphides dipping ~ 40° N
in vein structures

Massive sulphides in fork
found with white

Small outcrop at

70+95E 54+25

Same as last outcrop

3x3m

Sample # 34039 Qtz-Ser sch, limy

✓ 60% Py, lesser Sph, gal
L 71+05E 54+25N

SPECIMEN # 41 Same location
Same rock

Sample # 34040 Qtz-Sch, 2-5% sulphide
well foliated, Subcrop.

⊗ Subcrop

Sample # 34041 7100E

54+30N

✓ ⊗ Subcrop MASSIVE sulphides
Py, Sph, gal

Sample # 34042 7100E

54+30N

✓ Qtz-Ser sch - Py cpy in
fractures 2-5%, small stain
⊗ Subcrop

Outcrop on Road to Drill site
of OPEN trench

2m x 1m

Massive - foliated Qtz - Ser
sch trending 118° dip 10° North

Outcrop is ~ 090 \pm 71m from
drill hole. minor chlorite
alteration

~ 81m from drill hole on Road
Rubbly outcrop of which may
be massive (Spec # 42)
minor Qtz veins,
3m x 3m

Road at L7300E STATION
Hitchhiker Road 120 m

Outcrop at L7300E
STATION

along Road to west for 10m x 1m
Skarn - Ep-chlorite, massive

June 3 '80

Outcrop ^{AD} in trench at

L 72+56 E

54+30 N

Skarn Ep, Ch, Mag (very magnetite)

Spec # 43

Sample # 34043 same location

Qtz veining, north, adjacent to
skarn, Random Orientation.~~73+10 E~~Trench starts at Road and
Runs due North for 25m

5m from North End Magnetite

Skarn 2m x 1m

Ep - Ch - Mag Calc Silica

Dark grey - green color

From 0-10m (Road to north)

Ep - Ch Calc Silicate Skarn

less magnetite << 1%

Both Skarns are massive in Skarn
w. about magnetite is somewhat
isolated.

Skarn continuous across Road

June 23/88

Pit with numerous Angular
Rocks from Pit

Location 73+10E
54+00N

⊗ Subcrop

Sample # ~~34044~~ Spec # 44
Buff white Marble ± Quartz
with 5% talena (massive)

⊕ Subcrop

Sample # 34045 Spec # 45

⊙ Exp. ch - v minor Mg. Sph
Pyrite 2-3% (massive)

⊗ Subcrop # 34046 Spec # 46

Dull green gray brown, minor
fibrous Quartz. Ser. Lim.
Schist. 50% Sulphides
sol. pyrite, sph, gal

Trench at 70+98 E
5'4+05N

trend 100° 5 meter long to North
Locks trend 124° dip 4° N
Massive Qtz-Schist = Limy
Replaced Lst?

Big Trench Southend at
72+90E 53+45N at extends

on a bearing of 0140 for 40 meters

Middle of Trench, big pit with
sericite schists overlying

Replaced Lst with skarned
Ep-cr Calc-Schist at Top
Schists trend 090° dip 5° N

Sample of Massive Sulfide
from pit

34047 Massive Sulfide
L 72+90E 53+70N

Spec # 47 same

34048 Re Lst L 72+90E
53+80N

Spec # 48 same
Py 47

L 73+50E 54+20N Junction of
fore Road, N Trail only 20m
to Swamp

AT This Location a series
of small outcrops of Fe-Cr
in a magnetite skewer, massive
more foliation and Qtz veins

AT END of Road 160 m
Location 73+40E 52+60N

Outcrop at this location is
a Quartz - Fe sch. Mostly Quartz
with Sp sch. with foliation
trend 16-20 dip $\approx 14^\circ$

Sample # 34049
Spec # 49

Publicly outcrop sch. is
surrounded by Sp sch. Qtz-sch
Sch. 2 T5.

R. D. PENHALL LTD. MADE IN VANCOUVER, CANADA
DUNSBRAK WATERPROOF

June 25 1988

290m From Start of Road
trend 142° dip 18° NE

Outcrop on Road 2x3m
Well foliated Ch. Ser. Gschist

Outcrop on Road 70-80m
From top Atz-Ser (5 pitted)

Subst massive to well
foliated, trend 084° dip
 3° N $\frac{1}{2}$ minor cubic break

60-70m on Road from Top

Same as above minus quartz
chill white gray, about 1/2 white
gray, blue rocks are bleached
trend 084° dip 9° NW

.10m from Top of Road, P. 7

1m x 1m

Dark gray Limy Shales show

W.P.P., P. 7, mapped to 078° dip
trend 078° dip 4° W.

June 24/88

Red Top Showing

Trench at End of Road

Trend 220°

Road & trench at 56+50E

64+50N

Limestone - Limy Qtz Ser Contact

at 64+58N trend of limestone

112° dip 32° North

Subsidiary bands near Contact in

Limestone generally massive

Sample # 34050

Spec # 50

10-15 py 10% sph, cpy?

58-59 Lim Qtz Ser sch

trend 112° dip 39° N

68-69m Qtz vein, milk white,

rusty surface trending 114°

dip? Pyritic Sections

Sample # 34051

Spec # 51

75-83m Very well foliated
Bleached Qtz-Sr, minor chl
Schist trend 112° dip 27°N

83m - 98m Foliated - Massive
Qtz 95 - Sr, schist
Rusty, 5% sulphide (py)
In one location generally
1% or less Sample 34052
Spec # 52

99-104 Stanniferous

Qtz-Sr, massive, epibole/ch
altering, typical of Stann
was very limy rock
Sample 34053
Spec # 53

109 - 112m Mafic schist
chlorite bands with Qtz eyes
fine grain dark grey
trend 098° dip 55°N
Jointed

20 N trend towards westwards
for 15m

125N Qtz vein or quartz
fracturing with foliation
d ~ 104° dip 42° has
sphalerite 10%, minor pyrite?
Sample # 34054
SPEC# 34055

Adjacent to Qtz vein brecciated
Qtz - Ser - sch zone 4cm
with 40% sphalerite
Sample # 34055
Spec # 55

Rockets north are dirty
Qtz - Ser, silicates, schists
same or interstr.

Crossed Road

Massive Crinoid Fossiliferous
Limestone slightly Scarned,
minor chert bands.

Limestone ENDS at 28m in
trend 108° dip 28° North

Quartz set sch, very limy with
Limestone sections, contains 5% pyrite
Sample # 34056
Specs 56

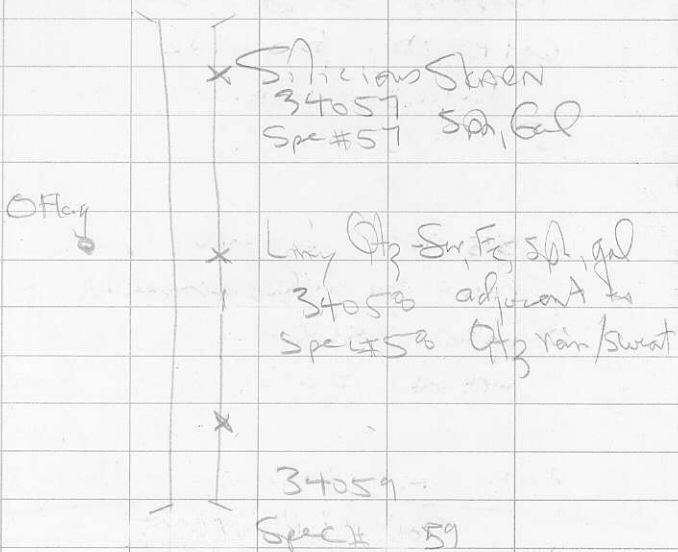
10m First Pit

Modestly Scarned Limestone
Ch-Epidote Banded Calc-Schist
minor clts of Pyrite

Quartz vein adjacent trending
with foliation

trend 110° dip 38° N

Narrow Trench 1m by 10m



NARROW 4pt. 10cm independent zones of sph, gal, ~~qtz~~ in narrow section of Qtz-sw sch adjacent to Qtz vein

Flout Qtz vein sph/gal 40%
came from trench

Sample # 34060
SPEC # 61

June 24

Start of Second Trend
North Part Located at
64+50N 55+90E
trends 180°

Mafic Dyke at
55+90E 64+48N

Trending North-South

Dyke is surrounded on west and
possibly east side of Quartz
Carbonate Alterationuggy with
extensive zoning + Quartz crystals
+ Qtz Veining

Highly altered ~~Qtz~~-Carbonate + Galena
Subcrop at 55+88E 64+47N
Sample # 34061
Spec # 61 Galena 15%

64+35N 55+88E small outcrop
west side of Trend
generally foliated → massive Silurian
Limestone, low grade serpen.
Qtz Veining common

55+90E

64 30N - 6415N

MASSIVE, fractured with
open Qtz veins. Strainy limestone
with minor Qtz. See sketch
trend 106° dip 39° North

6413 - 6403N 55+90E

west side of trench

Limy Qtz-Sericit schist

see sketch

trend 110° dip 34°

Larger Qtz vein with
mineralization adjacent to it

sample taken at

6413N 55+92

Limy Qtz-Sr 10-20 py

Sample # 34062 Spec # 67

Sample Composite over
1.3m Quartz Sericit with
pyrite in foliation and
Qtz veins / stringers with py

Galena
Sample A 34063

AT 6407N 55+92 E

LEVEL

R. D. PENHALL LTD. MADE IN VANCOUVER, CANADA
DUKSBARK WATERPROOF

6395-6403

Silicious - Massive - poorly
foliated Limestone. Grades into
Limonite - Sph - last 3 meters to south.
Trench 100° dip 44° N

Trench ends at 6380N

Mafic Dyke runs thru center of
trench with Qtz - Carbonate
alteration surrounding it
Road at end of trench

NEXT TRENCH Trends 210°
Starts at 6370N 5610E

Line Cross Trench at 6330N
5540E

At this location Black Argillite
graphitic approximately 2m
wide trend 110° dip 39° N

~~X~~ 2 meters west of Argillite - Mafic
Dyke trending ~ 180°
dip? SPEC # 63

5615Z .. 63+65N ← Sample location

AT outcrops Above Jersey P₀

Applite and Lmy Qtz-Ser
schists, minor sulphide
zone 2m from top

Sample # 34064

trend 108° dip 30° N

outcrop 5m wide below

Applite Brecciated & well

foliated; Quartz Ser S-R

d disseminated pyrite 2-3%

Dinky

trend 114° dip 32° N

Outcrop 30m below Applite

Qtz-Ser Sch / Applite

" brecciated 50% Ser

outcrop is 10m up to 5

downhill

Outcrop

6270

5560

trend 112° dip 28° N

50m below Applite

Dinky Quartz Ser Massive
5m up 5m down

LEVEL

Outcrop in trench

6270 N

5560 E

Qtz-Ser sch, well foliated
from this station to E end
of trench 30 m SW

First outcrop 2m wide

End outcrop 2m x 2m

Qtz bands, minor sulphide, bleached
114° dip 21° N

NEXT TRENCH 58+00 E
64+00 N

TRENCH Trends 220°

ENDS 140 m bearing 220°-180°

from 57+90 E 64+00 N

140-130m Arg. Qtz, black fine grained
ground 104° dip 48° N

minor Qtz veins

125-74m Rusty Quartz Ser slummy
schist trend 114° dip 54° N

well-moderately foliated

minor sulphide P. 120

minor Qtz veins 120
S. 34065 P.

74-54m Massna - well foliated
Qtz-Ser schist
trend 140° dip 50° N

Black Amphibole (Graphtolite)
54m trend 118° dip 60° N
2m wide

Mn - 42m

Moderately foliated quartz
sericite schist with
gray color - dull white for
more chloritized or sericite
sections. S. foliation 21°
trend 110° dip 54° N

4100N - 11N

weakly foliated Quartz-Ser-Schist
schist / Limestone contact
at 4100N, Limestone (North)
1m wide, pale white
highly siliceous

6395-65N

Shale 116' dip 45°N
Chlor-Epi-Calc Shale
minor sulfides < 1% mt

6350 2m in RB

Shale - same as above
trend 110' dip 30°N

6338 Road

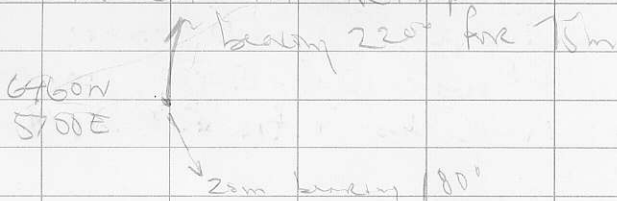
6338-45 Qtz-Sr ~~shaly~~ schist

Trunk END

6310N Road → Down Road
consisting of well ~~fractured~~
Qtz-Sr schist, Rusty

June 25

TRENCH AT Reatop



Sample taken at 57^(N) location
in trench

#34066 Qtz ± cpy ± mt
Spec# 64 Same as above

Spec# 65 # 34067 Dirty Qtz-Ser sch
poorly - moderately foliated,
Rusty Sections trend 104° dip
42° N minor Ch Abrahim

This outcrop extends from
75m - 45m

38-32 m med-dark greenish gray
Poorly foliated Qtz-sch sch
Siliceous Rich
trend 114° dip 38° N
Ch bands

R. D. PENHALL LTD. MADE IN VANCOUVER, CANADA
DUKSBAK WATERPROOF

26m-17 Rusty Qtz ser sch
mod-well foliated minor
pyrite near Qtz sweets minor
irregular band trend 113° dip 42° - 62°

14-

6458-6454

Massive-foliated Qtz-ser schist
Rusty - clear, more foliated to south
~~with more blushing~~

6452 - small outcrop

well foliated Qtz-ser with
blushing and Qtz flooding
trend 112° dip 45° N

6448 small outcrop in x/m

Rusty-poorly foliated Slavery - Qtz
Sericitic schist, py - mt, 47°

34068 SPEC# 66

6425 N - Road 6415 Slavery limestone

French Tiers south-westward
last 15m

Small Trench 3m x 10m

centered at 5660E

5390N

Lst / Qtz Schist (Lmy) minor
rusty and pyrite

fracture 220°

outcrop from trench extends
to Line 1 - 5700E (3m wide)

569+00E

57+08N

Mt. Dike

Small outcrop 1 x 1m

569+00E

(1 x 1)m

57+32N

Qtz Schist

well fractured

fracture 122°, 130°

L6900E

57+80N (Center)

Limestone Bluff

~ 10m wide trend 113° dip 24° N

White-banded Limestone

Mafic Dyke at 57+80N

6895E \approx 6910E

Apparent trend N/S dip vertical?

Limestone extends 50m East

2m west, immediately above

Limestone, Black Fine-grained pyllite

~ 2m wide 5m length from Station

Swamp (pond) at 6850E

58+50N (50 x 50m)

L71+00E 5725-32

Limestone Bluff -

094° Dip 24° N

Intermediate Tuff - felsic

7100E 5720 trend 122° dip 24° N

2m x 5m

L7100E 57+15 - 57+05

trend 094° dip 25° N

Matz - Intermediate tuff

Extends 30 m East

1/2 more 5670N

Qtz - Ser sch st well

Adapted Trend 114° dip 24°
1m x 1m

Shiv Trench strata at Pond
Location 55+10 N 1300E

TRENCH bearing 180°
50m long center
at L7353 5540

Sample at 5542N, Qtz ser

sch 2m x 5m

trend 116° dip 19° North

Sample # 34069

SPEC # 61

Trench at Top of Trench

Trench enters Trench at
55+70N 74+15E

Top of Trench at
55+80N 74+25E

Bottom of Trench at
55+40N 74+15E

Limestone at 74+25E
55+95N

INTRENCHA AT 55+72N
74+20E

Limy, poorly foliated, Qtz-Sch schist
5% pyrite, coarse-fine pyrite
disseminated, planar preferred
orientation with foliation
or fracture surfaces.

Sample# 34070

Spec# 68

Trend 102° dip 20°N

55+75N-55+60N

55+60N-55+43N - well foliated

Qtz-Sch schist, bleached, more schist
than above levels.

Sample 34071

June 26

Spec # 69

Sample taken at 55+44N

74+13E

Qtz-Ser sch 1% py
trend 106° dip 18° N

Wrench at 74+28E
55+40N.

1m x 10 up hill x 15 downhill
trending 024°

Qtz-Ser sch well foliated

Ferricrete Cap

Trending 094° dip 18° N

Two Samples from Dump
Ferricrete Too Extensive

Now

Qtz Ser sch + Qtz Ser sch

Ry + mt 30%

Spec # 70 Sample 34072

34073 Qtz-Ser sch 2-5%

Spec # 71 Pyrite

Wrench at 74+28E

55+40N

LEVEL

June 26

✓ Swamp - water flow → east
located at 61+50E

44+35 N
END of Trail → as well

✓ Line Crosses Road at
~~63+00E 45+15 N~~

✓ LINE on trail at
~~65+00E 43+80 N~~

✓ L46+00N 63+00E

✓ Outcrop on Road

5m x 5m

Rusty Ductile Andesite
v. poorly foliated

med-pl granish gray, pyrite as smac
and along fractures

trend 084°

Dip 8° South

Sample A 34074

Spec # 12

Outcrop on Road

6288E 46+25N

1m x 1m Dirty v. low grade Slaren

✓ Acid test → more Limestone

massive, Bluff white-gray, white
minor chert

Outcrop on Road

6287E 46+45N

Band Chert - Quartz schist

✓ only v. minor Lime when well
powdered (massive)

Outcrop on Road and Extends

15m west at 630E

47+05 - 47+12 N

✓ Highly Altered Quartz-Chert
schist (massive) Rusty, pyrite
seams + dissemination, minor slaren
affect.

Sample # 34075

Spec # 73

63105

47+80 - 4900. along Road

Dirty Limestone

Fine grained Arg. like in situ
with mud part Limestone - Fresh well

tand 110° dip 30° S

minor Sandstone inter layers.

Outcrop at junction of
Two roads, (where Truck is Parked)

10 x 4 m

✓ Qtz-ser siltst (Dirty)

Andesite - Dec. but not Phyl. like

Described? trend to road dip 85

minor Qtz veinings

Top of French Road at

61 x 15 E 511+60 N

Mafic Dyke 1-2 m wide

trending N-S, middle
of road

AT 51+20 N
61+07 E

SPOTTED Qtz sch. sch.
well foliated, banded
on west side of Dike
trend 099° dip 8° S

Spec # 74
Sample # 34076
less than 170 g. like
Cub. 2 g. to blank out

AT 61+00 N on road

50.75 small outcrop
1m x 1m Sericitized
Argillite minor Qtz Swartz No
Sulphides well foliated
101° Dip 21° S

AT 60+90 E on road

50.55 N
Massive Qtz-Ch schist py, pr rubble
1m x 1m
adjacent to Dike located on
west side
Sample # 34071
Spec # 75

Outcrop on Road at

5020N 6080E

Rusty. - Sericite Quartz porph
foliated schist weathered
outcrop Py 41%
minor chl, Dirty rock

Outcrop on Road AT

4980N

tand 80° dip 11° South
Massive, Quartz - Ser - ch
schist Dirty
Qtz 70 Ch 5 Ser 5

Outcrop L 6085E

4960N - 70N

Blocky Qtz - Ser - ch, ch
alteration

Same outcrop 4940-500N
on Road. Tand 090° Dip 15° S

Two outcrops on Road

L 6082E 4920N 2m x 2m

4930-40N 10m x 2m

Qtz-Ser schist, Qtz veins/
sweets. No mineralization
found. 112° Dip 12° South.
massive - moderately foliated.

Summit of Three Rocks at

L 6055E

4830N

Two Ponds between here
and where truck is parked.
on map

Small RAVINE with water
nearby. Truck parked at
Road Curve

June 26

✓ L 65+05E on Road

48+58N

two small outcrops

2x1m med gray Sinterized Limestone

Poorly foliated → massive

thin 0.5m dip 10° S

adjacent to east of site

1m x 1m

6900E

Outcrop at

47+80N

on Road SW of 50

Skarn

Epichale

68+80E

2x5m

Silica + Qtz veins

outcrop at

47+80N

Skarn + Qtz veins

68+50E

Spec #16

Two Samples

34078

Skarn py

34079

Qtz vein py

Spec #17

47+80N

69+60E

Small outcrops of Skarn
on Road - Some as previous

Small outcrop of Skarn
30m passed last outcrop in
Road (Road is starting to
bend southwards)

7100E - 50m along Road
47+50N

Sample 34080

No Specimen

Highly Altered

Epi-Ch Calc-Skarn

5-10% pyrite

on North side of Road

20m x 1m

Jan 26 1984

Spec # 78

Sample 340%

700E - 71+20E

46+45 - 46+60N

Shale - fgs - ch Calc - silica
+ Dec. fgs 57% pyrite

Creek 73+40E

48+00N on Road

outcrop at 73+20E
48+00N

1m x 1m on Road

tend. 120° dip 20'S

Dirty - Altho

Qtz - Ser Sil.

Rubby outcrop at

85+50E 47+50N

Brecciated ~~sh~~

Microton Limestone

Spec # 79

"Skaen Zone"

June 27 1988

Road at Top of Ridge at
60+40E 47+10N

* Small outcrop at
60+40E 47+39N on trail

1m x 2m

Highly Altered, chlorite alteration
of ~~Ductile~~ ^{Wilmiz?} Skaenfin
Trend 107° Dip 35° S.

med-dark green color

no sulphides, mod-fractured

* Small outcrop at 60+40E
47+36N on trail

same as above + Qtz flocding
no sulphides, massive.

60+40E 47+28N

* Outcrop 2m x 2m on trail

Intensely altered "Skaen"

Chlorite - Epidote - Calc Silica Massive

with ↓

Spec# 80

Sample# 34082

Silicious, Rusty zone
adjacent to Skaen
5-10 lumpy, Bu or MB?

* Small outcrop at 64+40E
47+10N

1m x 1m

Poorly foliated Quartz schist
minor Sericite

milkily white, greenish tinge
(Ancient Dike?)

very minor Magnetite

* Small outcrop at 60+40E
47+13N on Trail

Pyrite, 15%, white dike
schist generally massive, no Polymt

Sample # 34083

Spec # 81

* Outcrop at 60+40E 47+05 →

10 N Same as above except

stronger attraction to skarn &

less sulphides

47+02 60+40E

Strong Ferr. Crust

✓
✓
46+90 → 47+02E 60740 N
Ferris Crete / Skarnit py
beneath?

✓
+ 60740E 46+72 → 85 N

trond 072° dip 20° South
(Skarny) Ch Qtz Ser sch
more foliated than above
outcrop. Subhedral Cubic Pyrite
170

Trail Turns from South to West
130 m From LINE 57+00E
46+15 N

Outcrop at 43 m Pass

57+00E 4615 N

outcrop extends via zone (63)
Chloritized Dolomite - Anhydrite
Dolomite trond 0820
dip 20° S
Camber up hill 10m

Jan 27

105 west of Line 57+01E

✓ on Trail

Rusty - massive poorly foliated
Ch - Skarn in ch

Trail at 46+38 N L57+00E

41m west along Trail (43+38 W 57+00E)

✓ Magnetite, Skarn, Silica
Froding + malachite stain?

Sample # 34084

Spec # 82

Magnetite - malachite etc. seen
enclosed in Ep-Ch - Calc Silica

115m west of Line 57+00E

✓ Road branches to due
North (Truck Road

(55+74E 4660N)

55+74E

47+70N

June 21

Top (North) END of Trench at

55+74E 48R 5N

47+70N

AT 55+77E (East side of Trench) cut dug over Top of Unit

Dirty Recrystalline limestone bluish white + silica flooding intercalated with dark grey black phyllite, mineralization of ~5% pyrite in Recrystalline limestone outcrop .5 x 2m

Sample # 34095

Spec # 83

~~Start~~ Subcrop at

47+40N

55+74E

Sample # 34096

Spec # 84

Black schist 50% magnetite (pyrite) 2%

fine grained pyrite

June 21

Outcrop on Road (Tank) at
L 55+74E 4725-15N

Clear well foliated Qtz sericite
schist surrounded by
less foliated Cr Pt schists
trend 110° dip 40° South
✓ Cr-Qtz schist here (Mo.?)
in with foliated

✓ L 55+74E

4710-4690N

MASSIVE, highly chloritized massive
epidote alteration, similar to
other N-S road geology (this
massive (Calc-Rich Dike)
trend ~ 090° dip 30° S

Typical Nob

5500E 46+00W

Shony Dike ChE_p + Qtz
sweats/Veins

20m wide - extend to Road
cut (Eastward)

Ends ~ 20m w of L5500E

Outcrop ~~at~~ ~~most~~ East

at 46+00N (Outcrop 10m N/S)

20m wide

55+54E along Road

Qtz-Sericitic schists, well
foliated, Kynoh trending 162°

dip 35° W - 7

Overlain by Shony Dike
+ Qtz Sweet Veins

June 28/06

5140N 5940E

Cat Trail WNW Trend



L 5940E 55440-56450N

Swamp with water running
-115°

L 5940E 5630-5610 N

Swamp, some trend
Drier than previous swamp

L 55400E 6280N

Creek flowing NW
good flow

L 5500E 6060-6080

along small Ridge

✓ fine gr. m.c. Tuff - Arg. Mte
Trend 130° d.p. 45° N

✓ dark grey - black

Massive moderately fractured

LEVEL

R. D. PENHALL LTD. MADE IN VANCOUVER, CANADA
DUKSBAK WATERPROOF

L 5500E

58+50N

Outcrop mxlm
Slicious Mohic Tuff - v fine m
banded (laminated)
dark grey - black

L 5500E Creek flow WNW

55+82N

Swampy firm
58+10 → 530N

L 5500E

5205-5215N Small Ridge

Rubbly outcrop

✓ v fine grained dark grey mica
green (chlorite) laminated
hard 080 or dip 5° South?

L 5500E 5100N

Small Ridge

Rubbly outcrop

Dip 70° N
well foliated massive

fine grained mafic schist mica
chlorite

June 28

L 57+00E

51+10 - 51+30

58A

dirty, well foliated fibrous schists

+ mafic, fine grained
tuff 0800 dip 10° S

L 57+00E

56+40N

Small Creek

L 57+00E

59+70N - 25-35

lime v. fine grained
Tuff, Rubby outcrop ~ 1m wide

L 57+00E

61+70N

Creek

Good flow WNW

R. D. PENHALL LTD. MADE IN VANCOUVER, CANADA
DUKSBAK WATERPROOF

Small outcrop

3m x 1m

Mafic Tuff / Q_2 veins

55+40E

61+70N

Small outcrop 3x2m

trend 122° dip 20° N

Mafic Tuff w fine gr

dark gray - black

~~Trend~~ Location

55+60E

61+70N

Outcrop

61+10E

5310-20N

Rubbly outcrop along small

Ridge Top


Mafic Tuff - felsic

Kraymuth

* Spectra 35

Partly tilted

trend 090° dip 4° South



Outcrop

53+50N

ln + ln

65+20E

Oxidized Qtz Ser sch

trunk 142 = Dip 4° N

Well foliated

Outcrop ln + ln

massive oxidized, Ch, Bx?

~~5500E 53+45N~~

~~Shrine Rd~~

* Spec A 86

high. Sh. rns, Almot

Qtz-Cor Alteration (Poor Show)

R. D. PENHALL LTD. MADE IN VANCOUVER, CANADA
DUKSBK WATERPROOF

ln 3/100

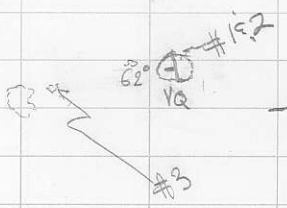
Reel Top Trench, long southern
one, bluish white to dull gray
limestone apparently 0-10m
pass end of trench, rubble

Drill hole located at 19m
South of B at 8432 E
trend 210° dip 60° South

R. D. PENHALL LTD. MADE IN VANCOUVER, CANADA
DUKSBAK WATERPROOF

R. D. PENHALL LTD. MADE IN VANCOUVER, CANADA
DUKSBAG WATERPROOF

L57400E



4700 N

LEVEL