

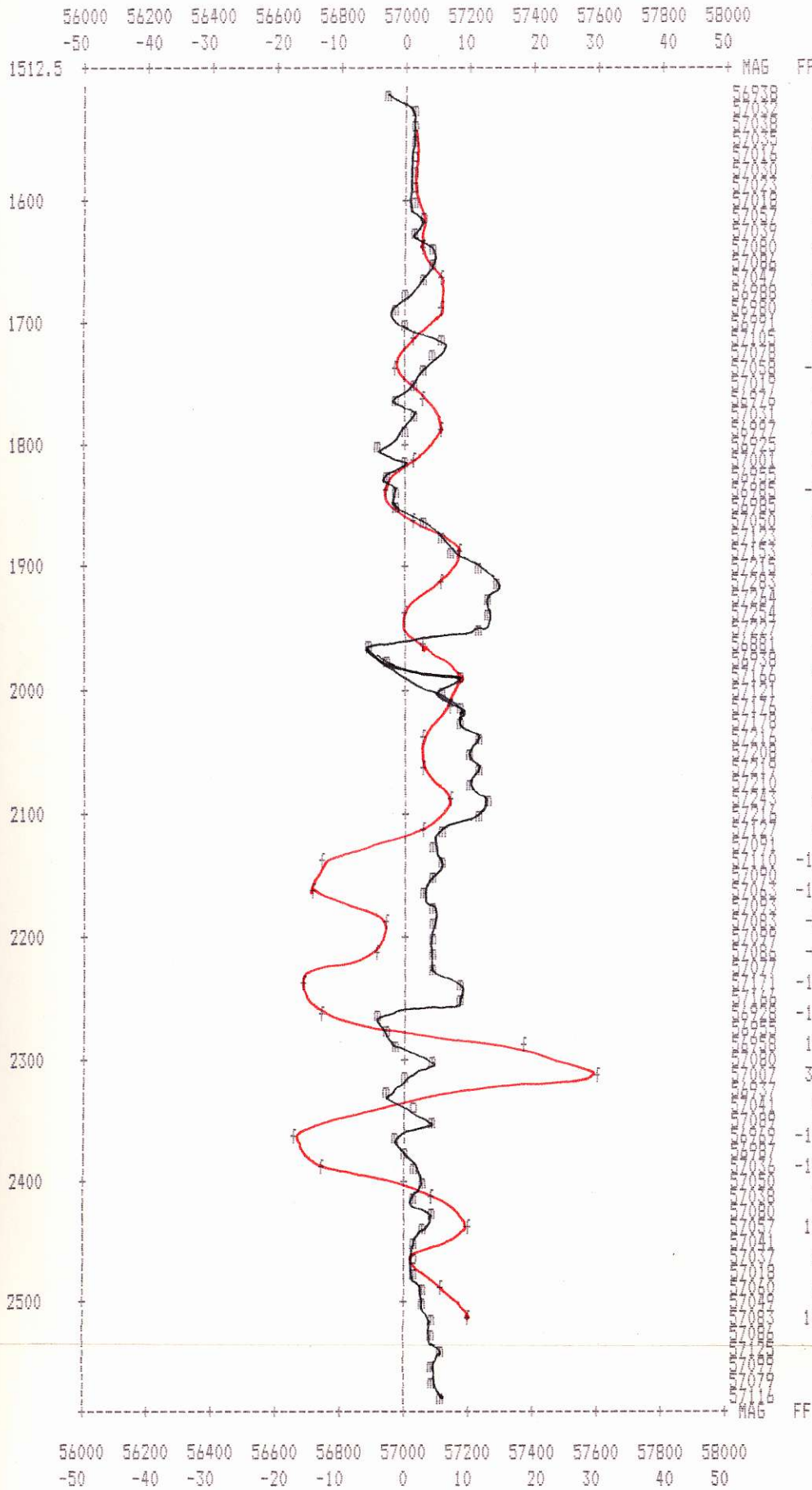
Spring Property Magnetometer & Fraser Filter (1989)

Line: 2568 E

Date: 89/06/19

Station interval = 1 print position

magnetometer:- m           OUT OF RANGE MAG:- M  
vlf ff:- f           OUT OF RANGE FF:- F  
MULTI-DATA POINT:- o



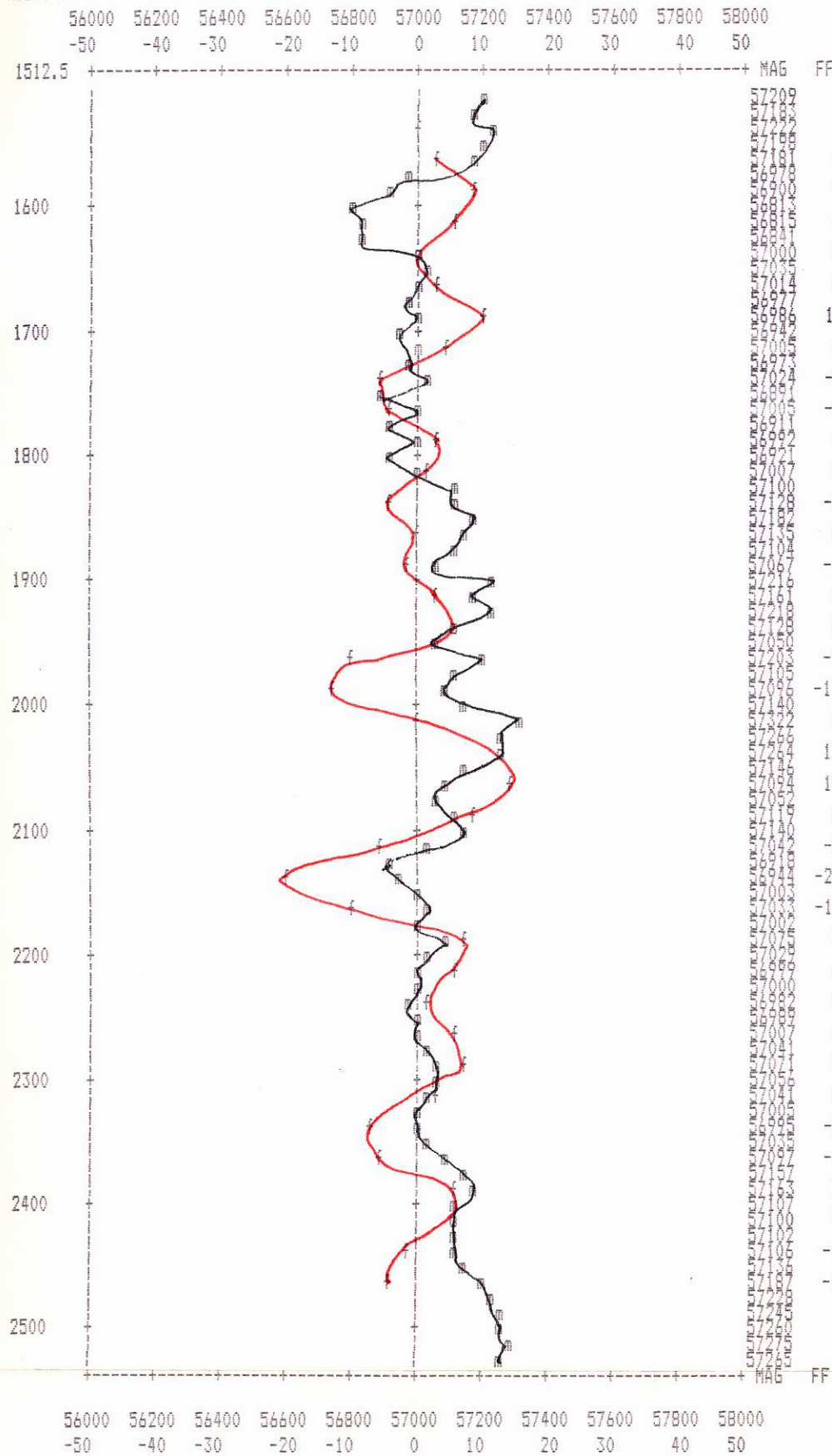
Spring Property Magnetometer & Fraser Filter (1989)

Line: 2363 E

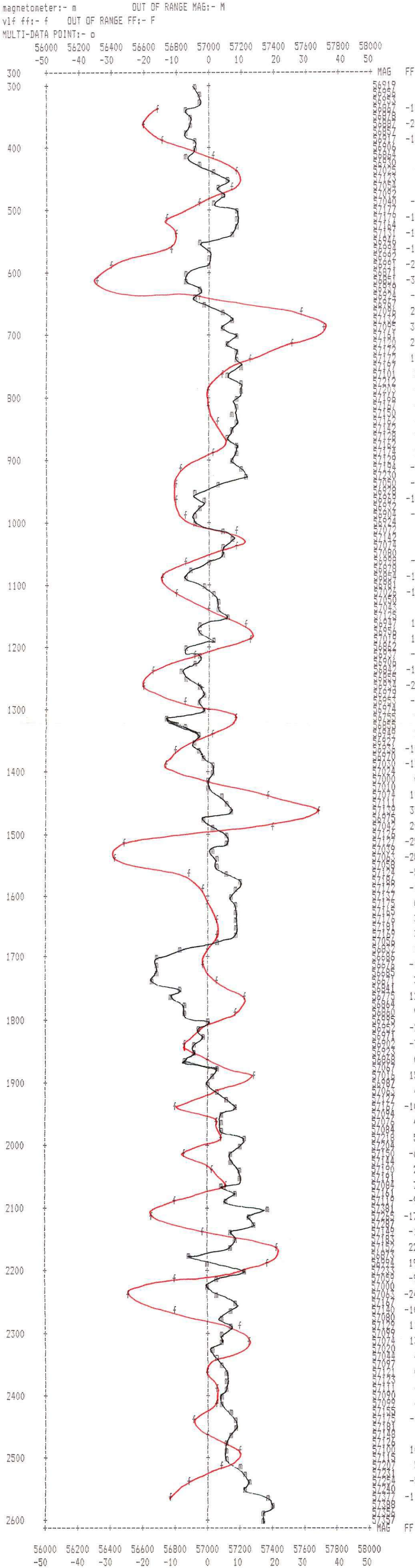
Date: 89/06/19

Station interval = 1 print position

magnetometer:- m           OUT OF RANGE MAG:- M  
 vlf ff:- f           OUT OF RANGE FF:- F  
 MULTI-DATA POINT:- o

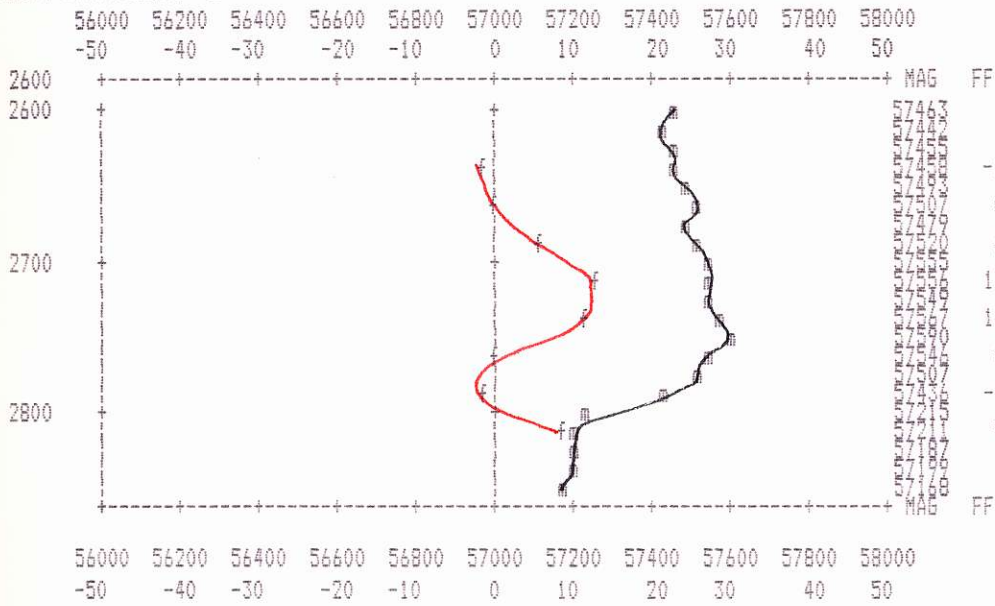


Spring Property Magnetometer & Fraser Filter (1989)  
 Line: 2200 E  
 Date: 89/06/19  
 Station interval = 1 print position



Spring Property Magnetometer & Fraser Filter (1989)  
 Line: 2001 E  
 Date: 89/06/19  
 Station interval = 1 print position

magnetometer:- m           OUT OF RANGE MAG:- M  
 vlf ff:- f           OUT OF RANGE FF:- F  
 MULTI-DATA POINT:- o



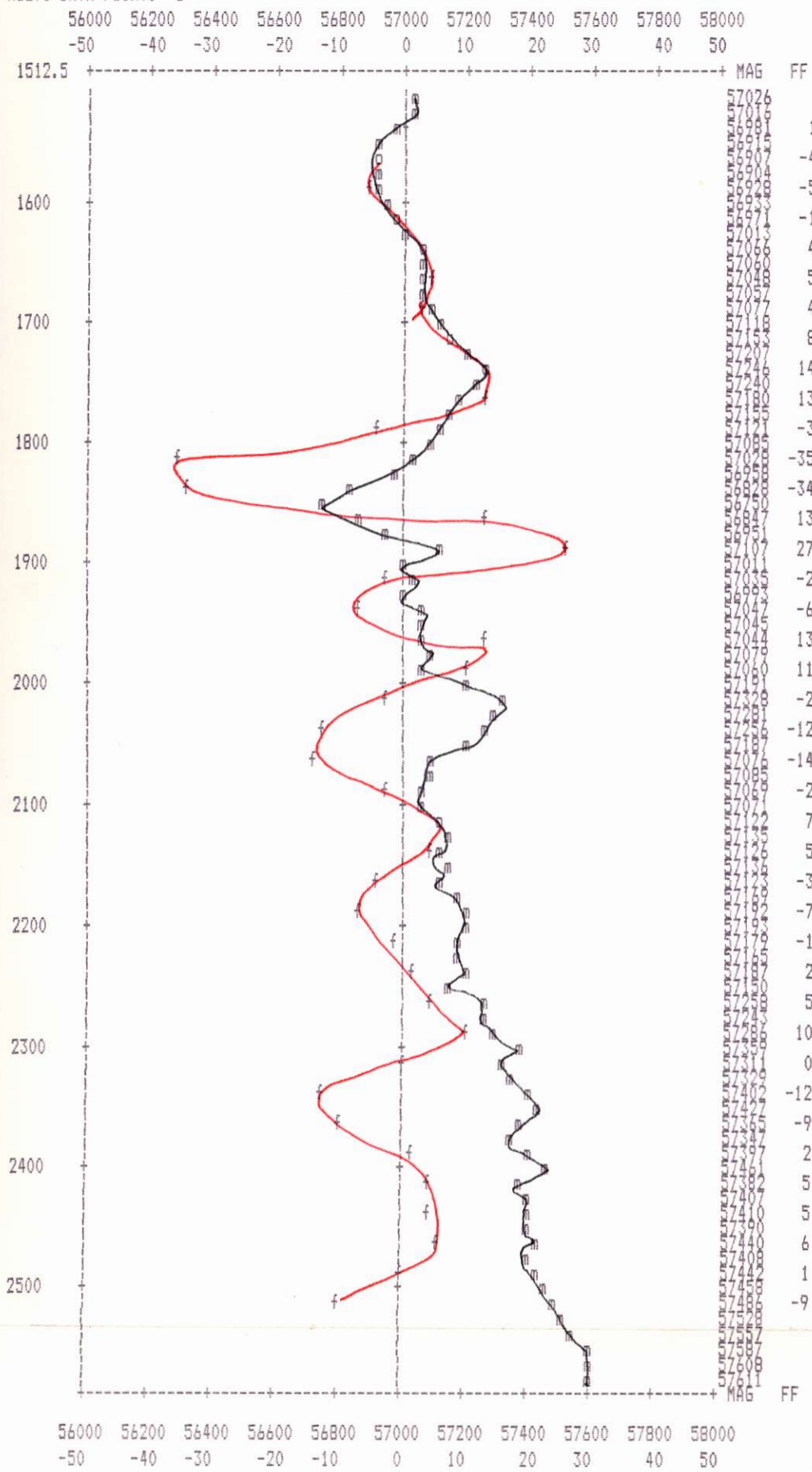
Spring Property Magnetometer & Fraser Filter (1989)

Line: 2000 E

Date: 89/06/19

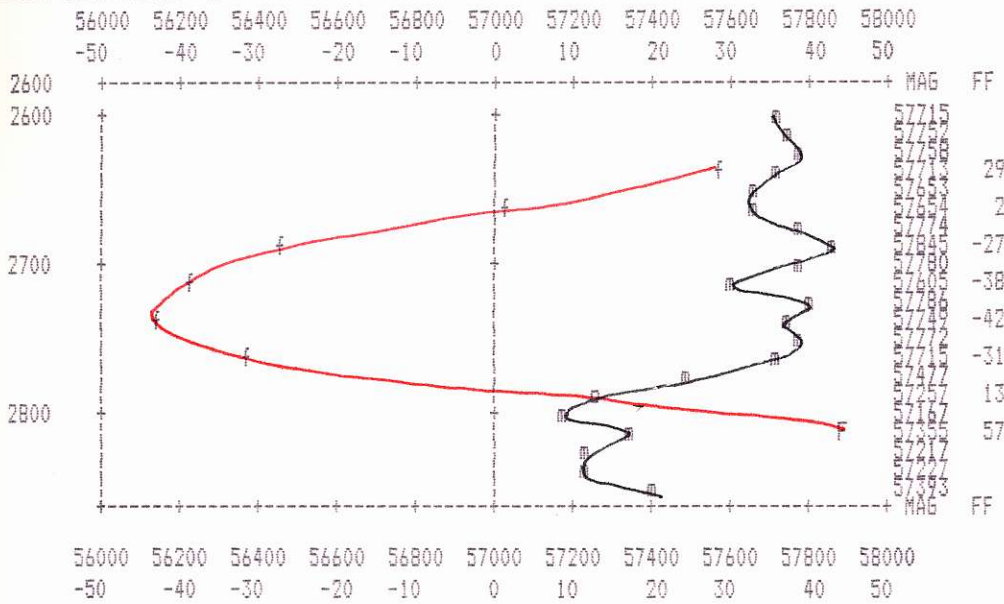
Station interval = 1 print position

magnetometer:- m      OUT OF RANGE MAG:- M  
vlf ff:- f      OUT OF RANGE FF:- F  
MULTI-DATA POINT:- o

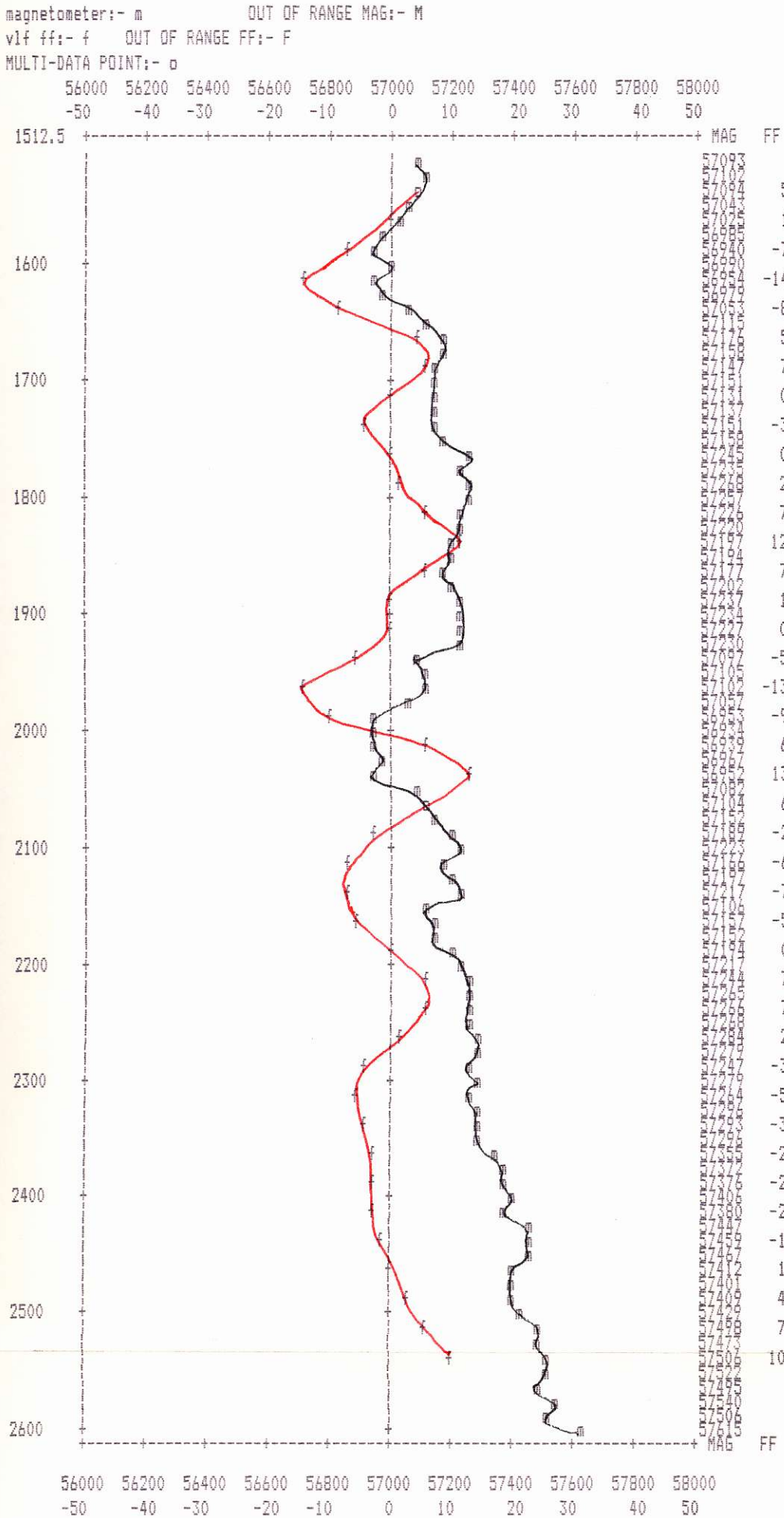


Spring Property Magnetometer & Fraser Filter (1989)  
Line: 1801 E  
Date: 89/06/19  
Station interval = 1 print position

magnetometer:- m           OUT OF RANGE MAG:- M  
vlf ff:- f       OUT OF RANGE FF:- F  
MULTI-DATA POINT:- o

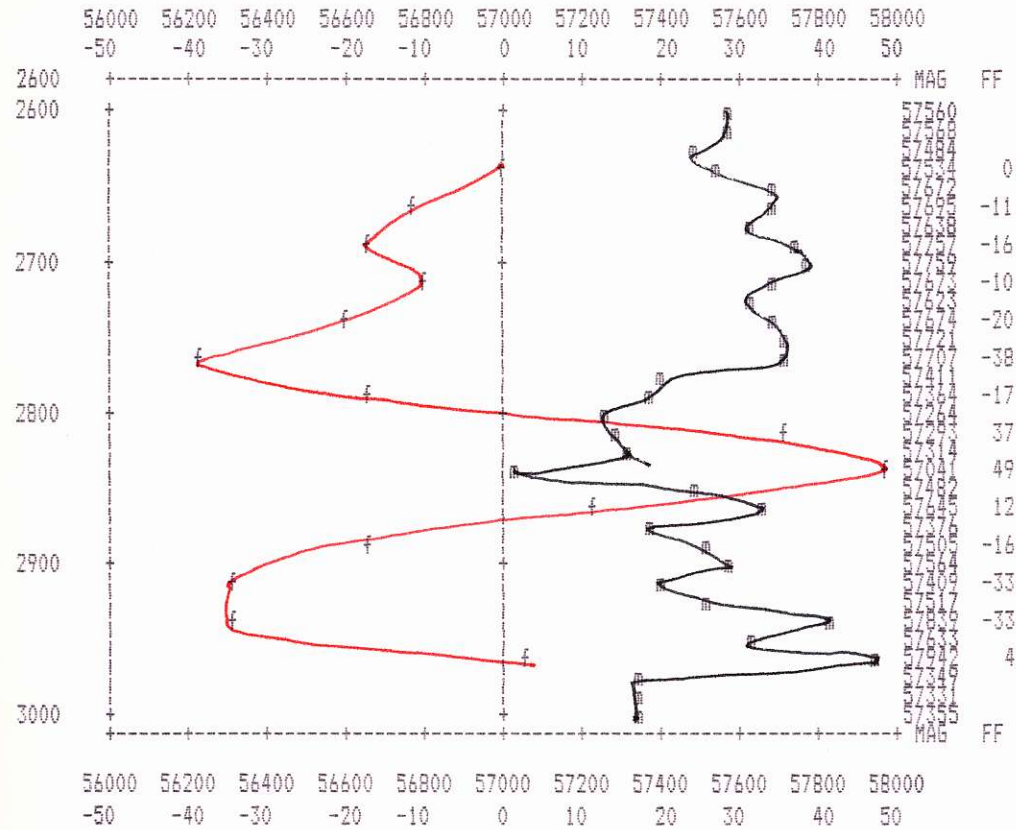


Spring Property Magnetometer & Fraser Filter (1989)  
 Line: 1800 E  
 Date: 89/06/19  
 Station interval = 1 print position



Spring Property Magnetometer & Fraser Filter (1989)  
 Line: 1601 E  
 Date: 89/06/19  
 Station interval = 1 print position

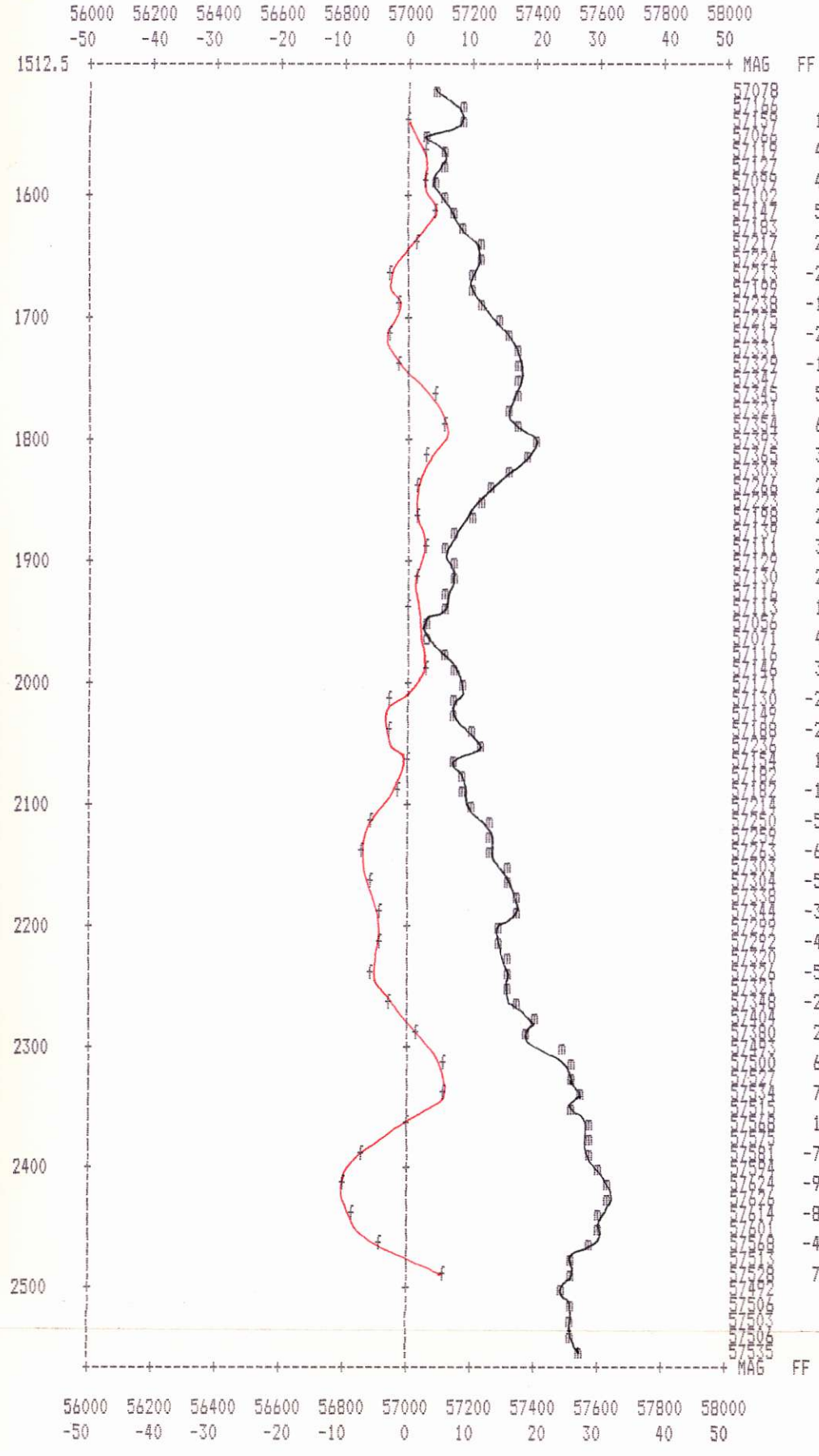
magnetometer:- m           OUT OF RANGE MAG:- M  
 vlf ff:- f           OUT OF RANGE FF:- F  
 MULTI-DATA POINT:- o





Line: 1600 E  
Date: 89/06/19  
Station interval = 1 print position

magnetometer:- m           OUT OF RANGE MAG:- M  
vlf ff:- f           OUT OF RANGE FF:- F  
MULTI-DATA POINT:- o



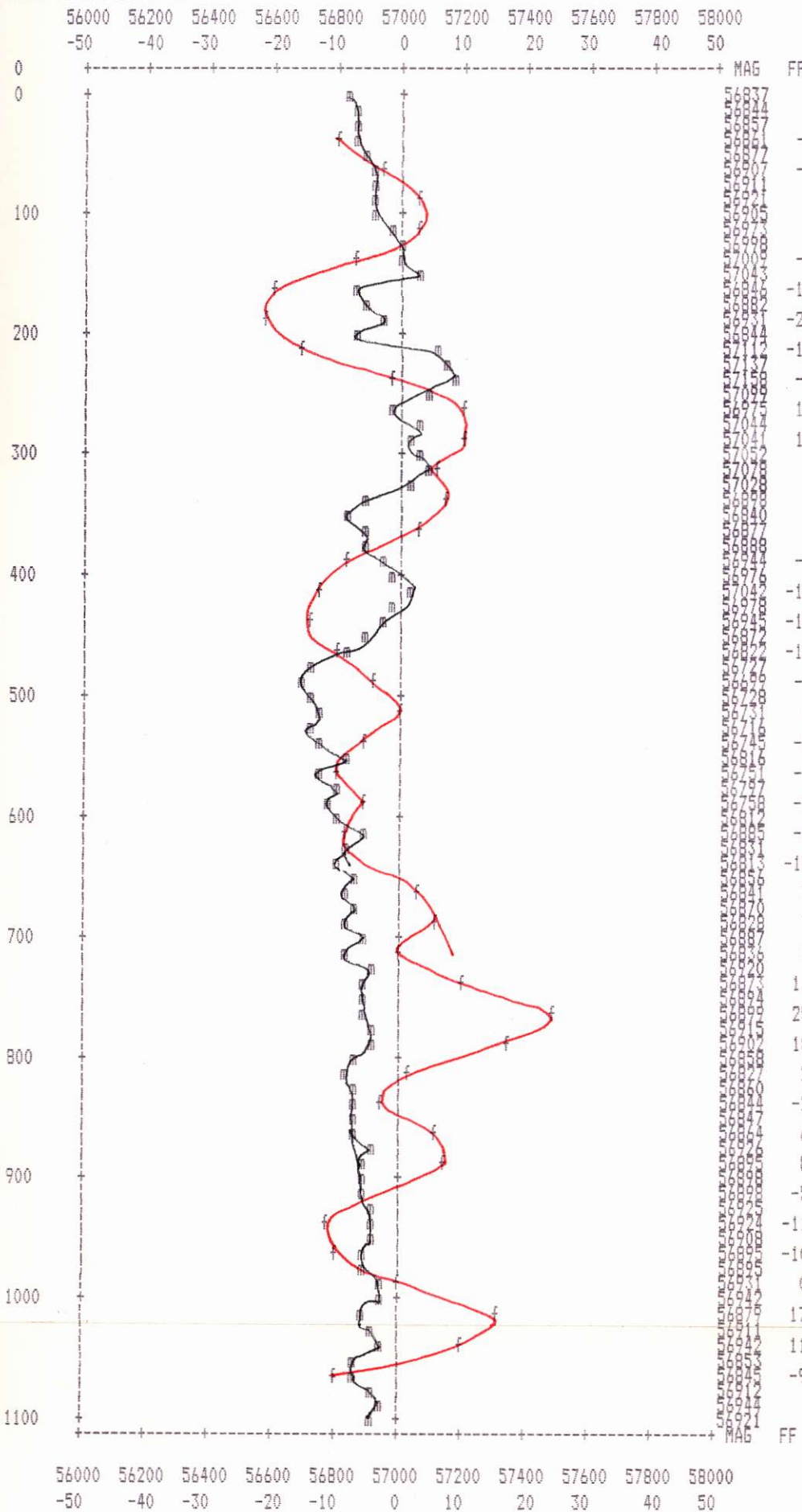
Spring Property Magnetometer & Fraser Filter (1989)

Line: 1500 E

Date: 89/06/19

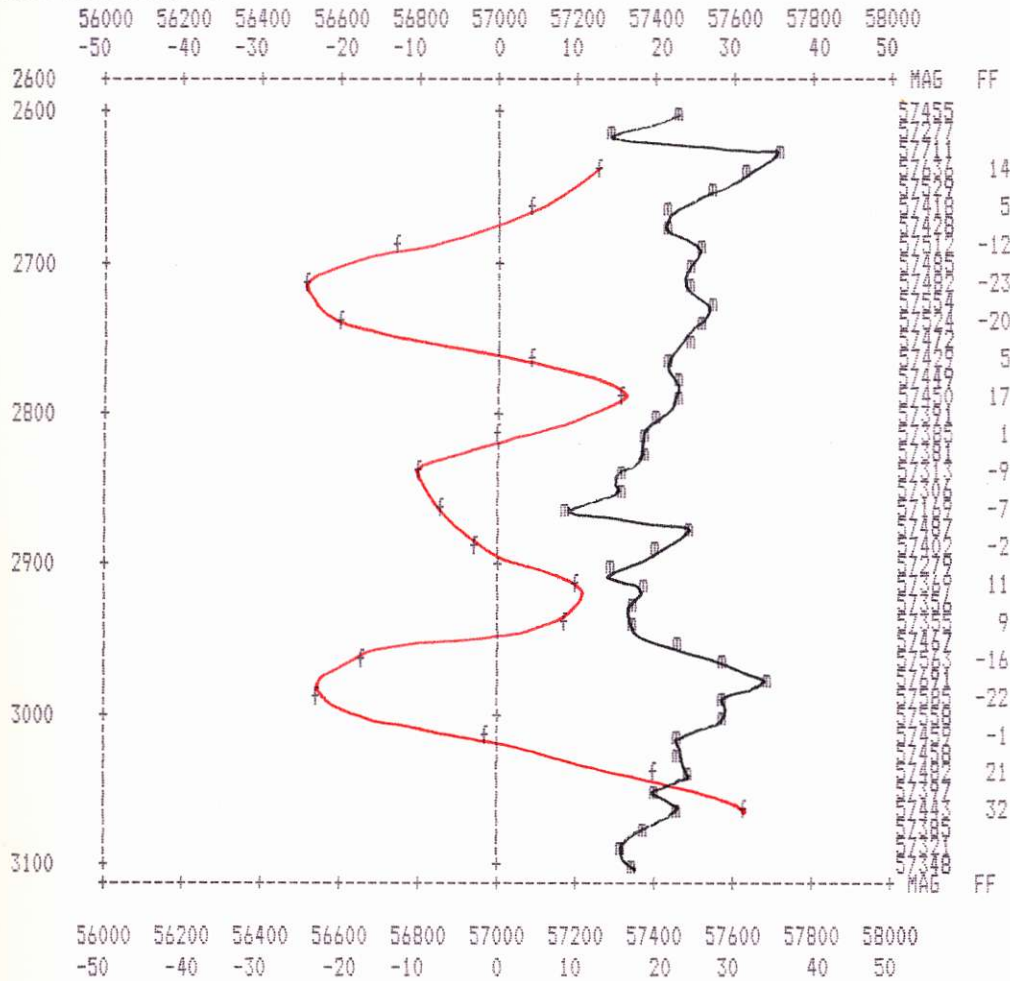
Station interval = 1 print position

magnetometer:- m           OUT OF RANGE MAG:- M  
vlf ff:- f           OUT OF RANGE FF:- F  
MULTI-DATA POINT:- o



Line: 1401 E  
 Date: 89/06/19  
 Station interval = 1 print position

magnetometer:- m           OUT OF RANGE MAG:- M  
 vlf ff:- f           OUT OF RANGE FF:- F  
 MULTI-DATA POINT:- o



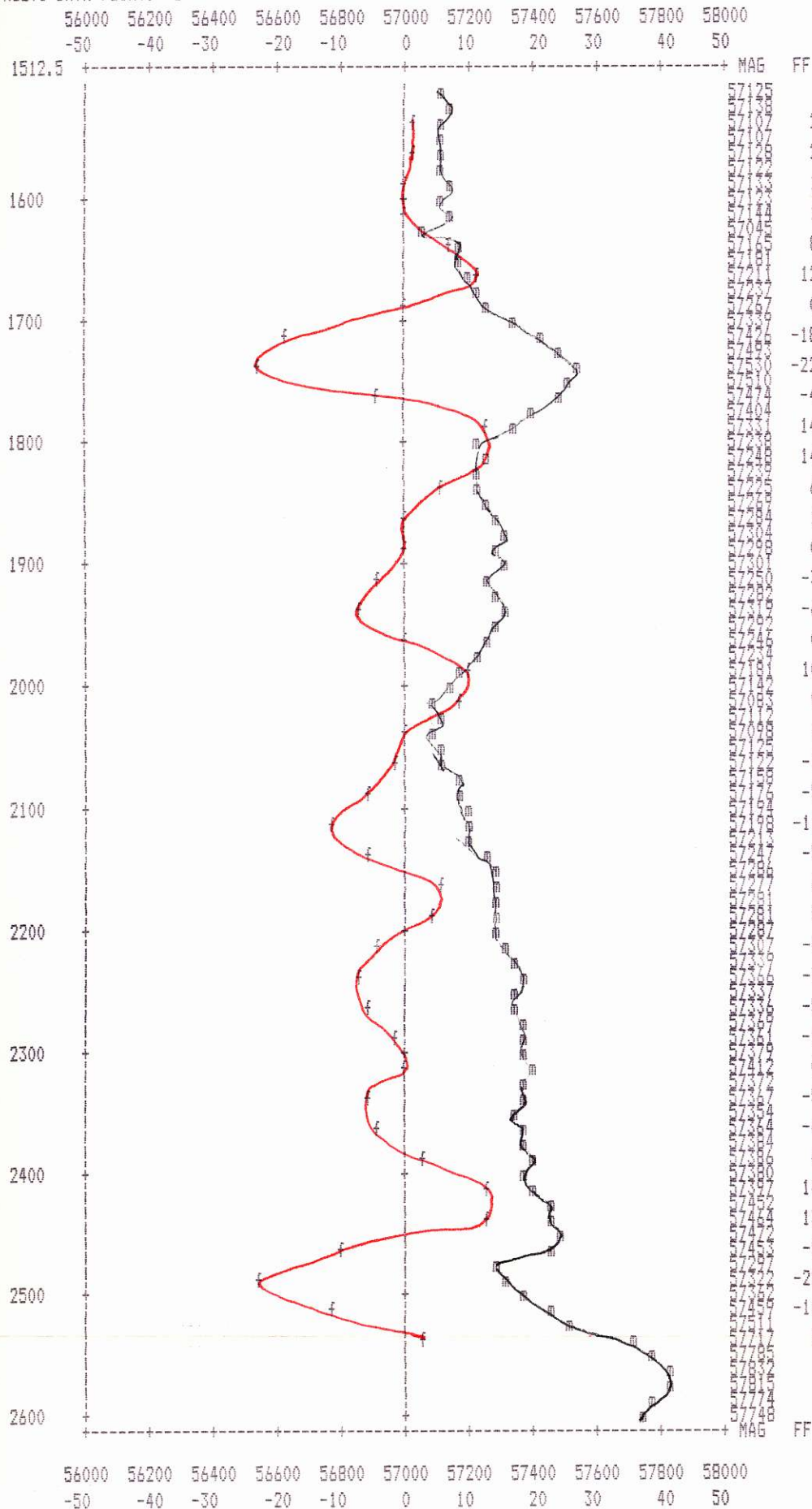
Spring Property Magnetometer & Fraser Filter (1989)

Line: 1400 E

Date: 89/06/19

Station interval = 1 print position

magnetometer:- m           OUT OF RANGE MAG:- M  
 vlf ff:- f           OUT OF RANGE FF:- F  
 MULTI-DATA POINT:- o



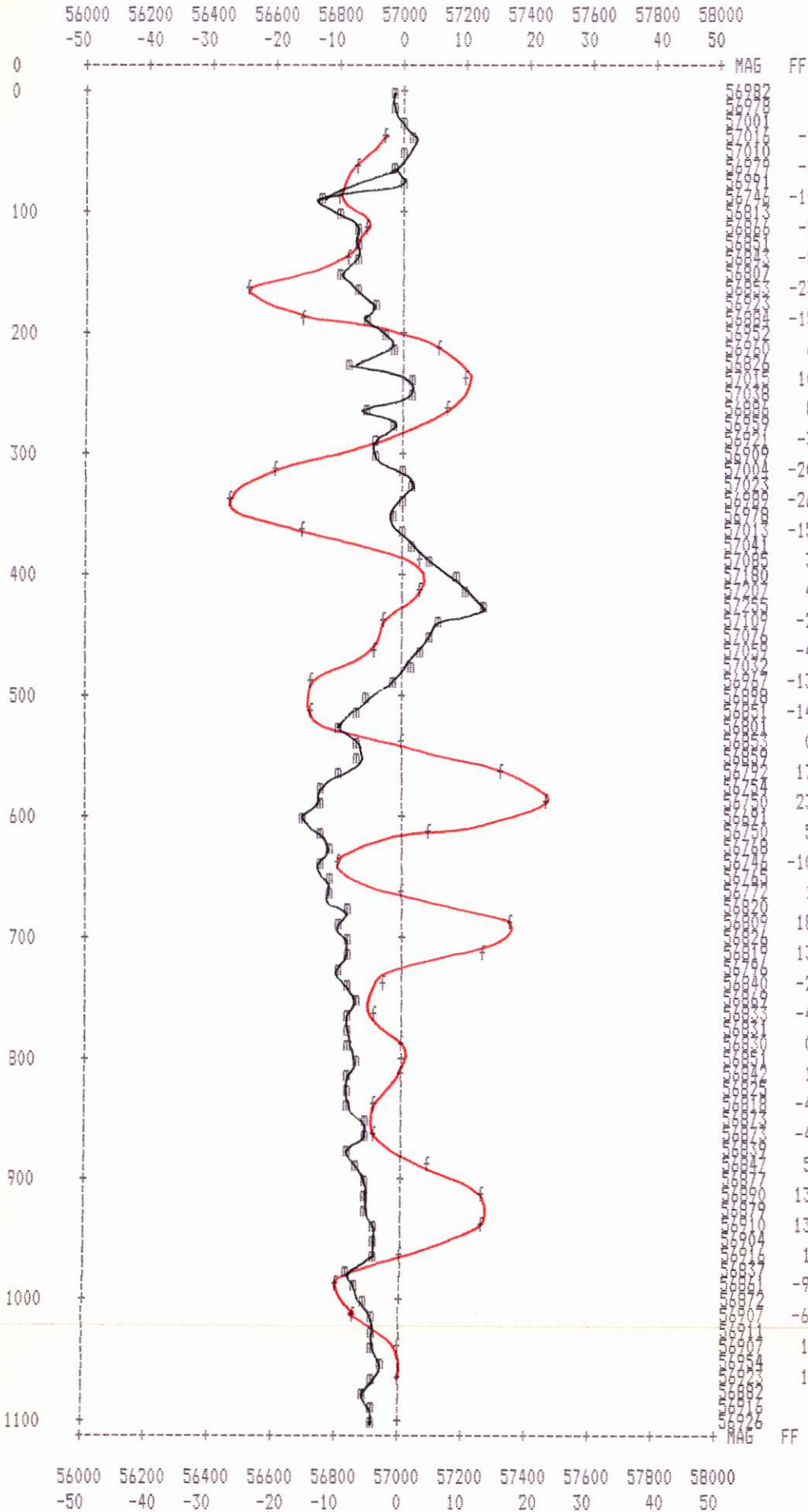
Spring Property Magnetometer & Fraser Filter (1989)

Line: 1300 E

Date: 89/06/19

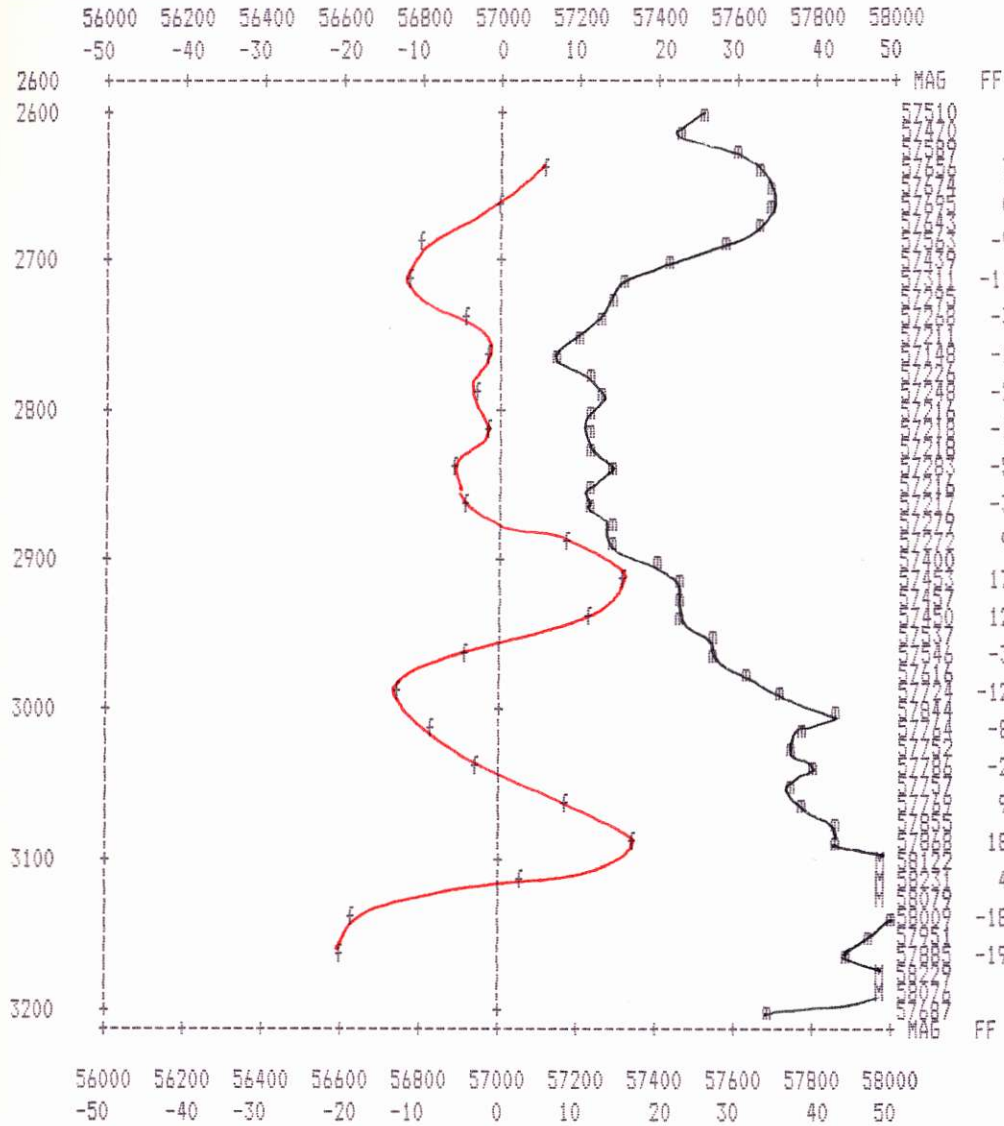
Station interval = 1 print position

magnetometer:- m            OUT OF RANGE MAG:- M  
 vlf ff:- f            OUT OF RANGE FF:- F  
 MULTI-DATA POINT:- o



Spring Property Magnetometer & Fraser Filter (1989)  
 Line: 1201 E  
 Date: 89/06/19  
 Station interval = 1 print position

magnetometer:- m           OUT OF RANGE MAG:- M  
 vlf ff:- f           OUT OF RANGE FF:- F  
 MULTI-DATA POINT:- o



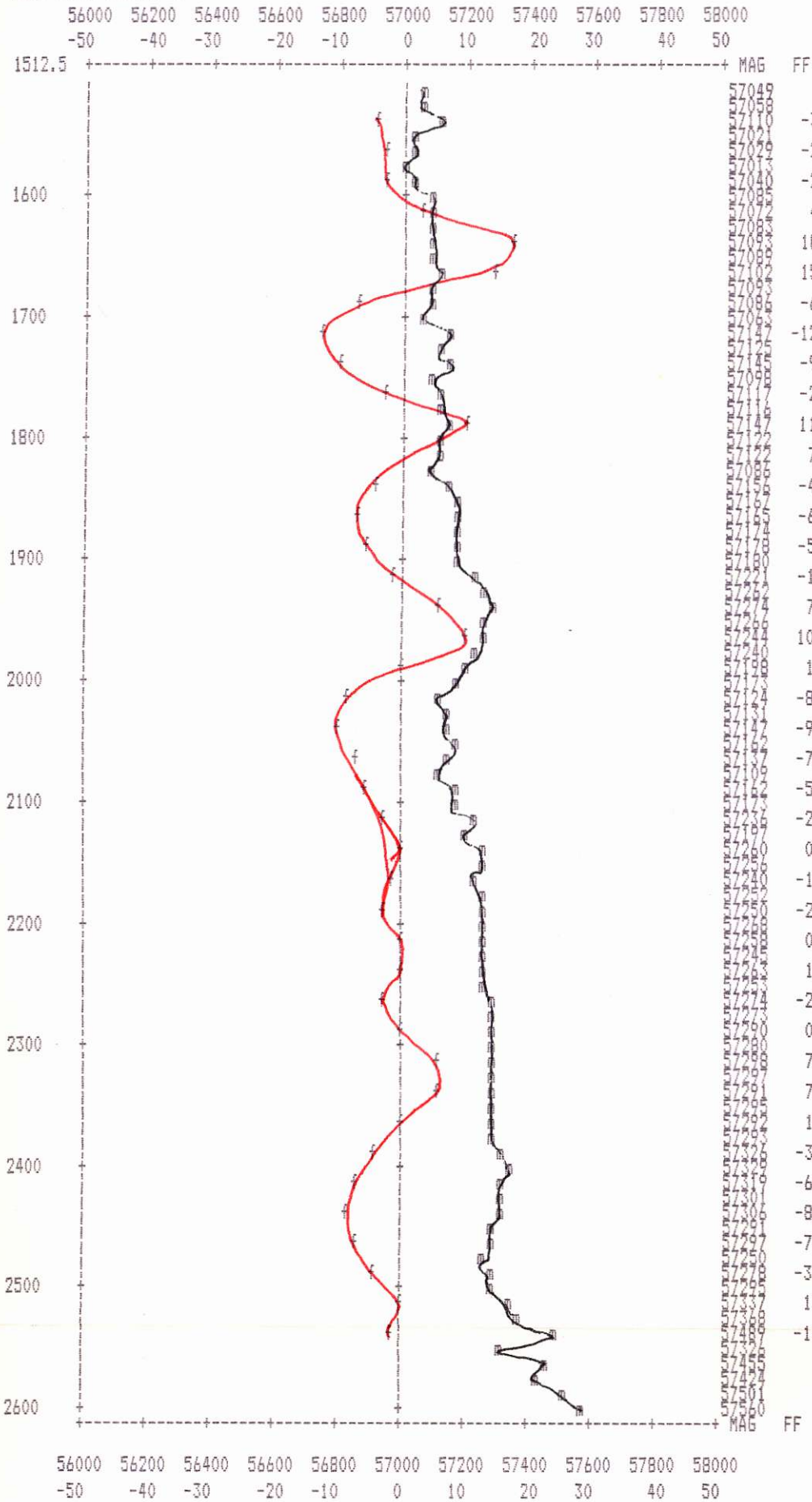
Spring Property Magnetometer & Fraser Filter (1989)

Line: 1200 E

Date: 89/06/19

Station interval = 1 print position

magnetometer:- m           OUT OF RANGE MAG:- M  
 vlf ff:- f           OUT OF RANGE FF:- F  
 MULTI-DATA POINT:- o



Spring Property Magnetometer & Fraser Filter (1989)

Line: 1100 E

Date: 89/06/19

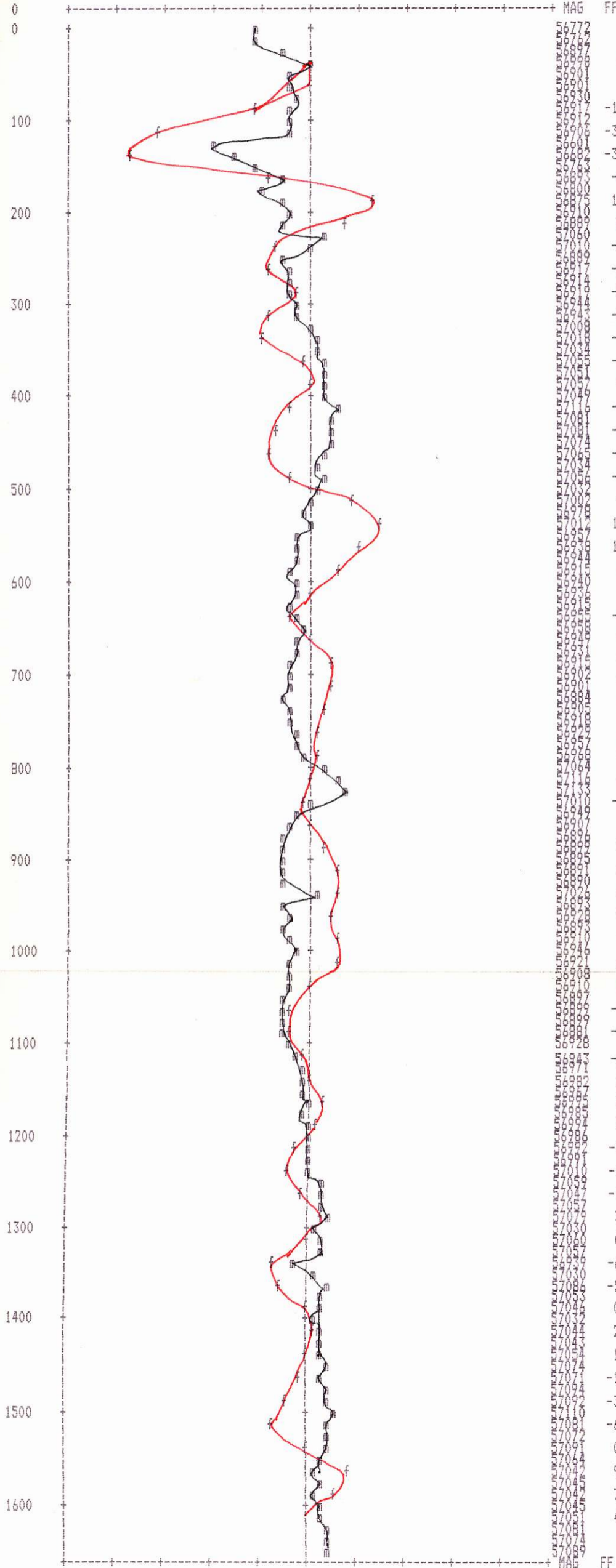
Station interval = 1 print position

magnetometer:- m           OUT OF RANGE MAG:- M

vlf ff:- f           OUT OF RANGE FF:- F

MULTI-DATA POINT:- o

56000 56200 56400 56600 56800 57000 57200 57400 57600 57800 58000  
 -50   -40   -30   -20   -10    0    10    20    30    40    50



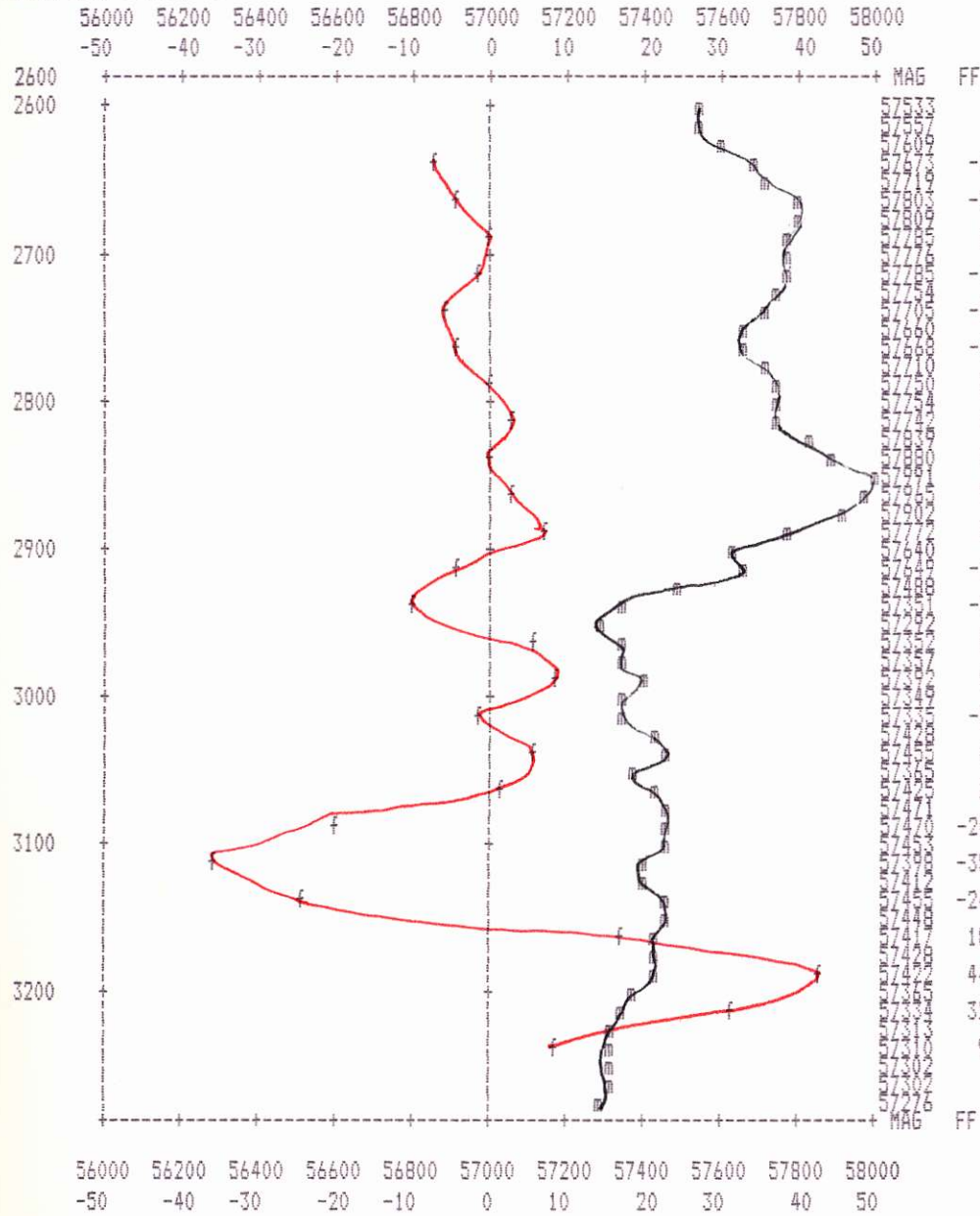
MAG	FF
6772	0
6771	1
6770	-11
6769	-31
6768	-36
6767	-8
6766	13
6765	8
6764	-6
6763	-8
6762	-2
6761	-8
6760	-9
6759	-1
6758	0
6757	-4
6756	-6
6755	-8
6754	-4
6753	9
6752	15
6751	11
6750	6
6749	1
6748	-3
6747	0
6746	5
6745	5
6744	3
6743	2
6742	2
6741	0
6740	-1
6739	1
6738	3
6737	6
6736	6
6735	5
6734	7
6733	6
6732	1
6731	-4
6730	-4
6729	-1
6728	1
6727	3
6726	2
6725	-2
6724	-4
6723	-1
6722	3
6721	0
6720	-6
6719	-5
6718	0
6717	2
6716	1
6715	-1
6714	-3
6713	-6
6712	0
6711	9
6710	7
6709	4
6708	4
6707	9

56000 56200 56400 56600 56800 57000 57200 57400 57600 57800 58000  
 -50   -40   -30   -20   -10    0    10    20    30    40    50



Spring Property Magnetometer & Fraser Filter (1989)  
 Line: 1001 E  
 Date: 89/06/19  
 Station interval = 1 print position

magnetometer:- m          OUT OF RANGE MAG:- M  
 vlf ff:- f          OUT OF RANGE FF:- F  
 MULTI-DATA POINT:- o



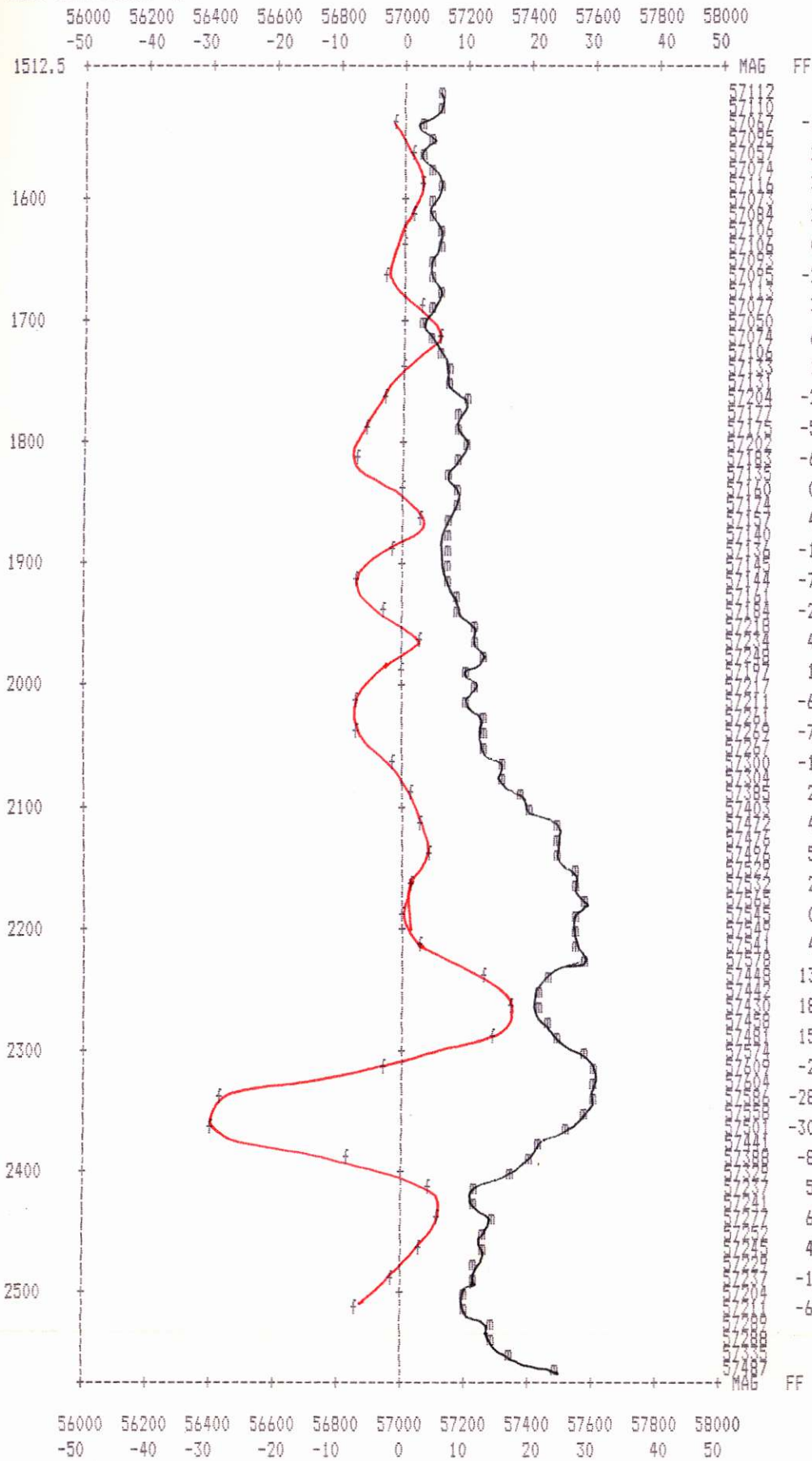
Spring Property Magnetometer & Fraser Filter (1989)

Line: 1000 E

Date: 89/06/19

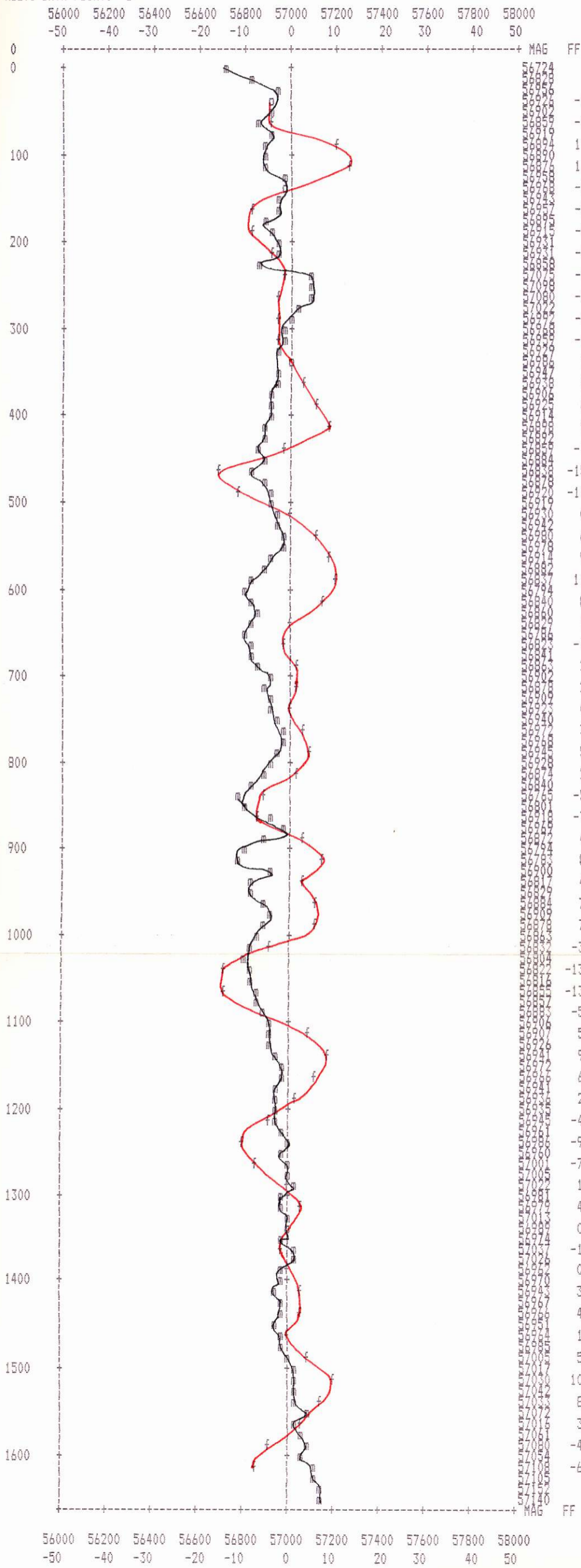
Station interval = 1 print position

magnetometer:- m      OUT OF RANGE MAG:- M  
 vlf ff:- f      OUT OF RANGE FF:- F  
 MULTI-DATA POINT:- o



Spring Property Magnetometer & Fraser Filter (1989)  
 Line: 900 E  
 Date: 89/06/19  
 Station interval = 1 print position

magnetometer:- m           OUT OF RANGE MAG:- M  
 vlf ff:- f           OUT OF RANGE FF:- F  
 MULTI-DATA POINT:- o



Spring Property Magnetometer & Fraser Filter (1989)

Line: 800 E

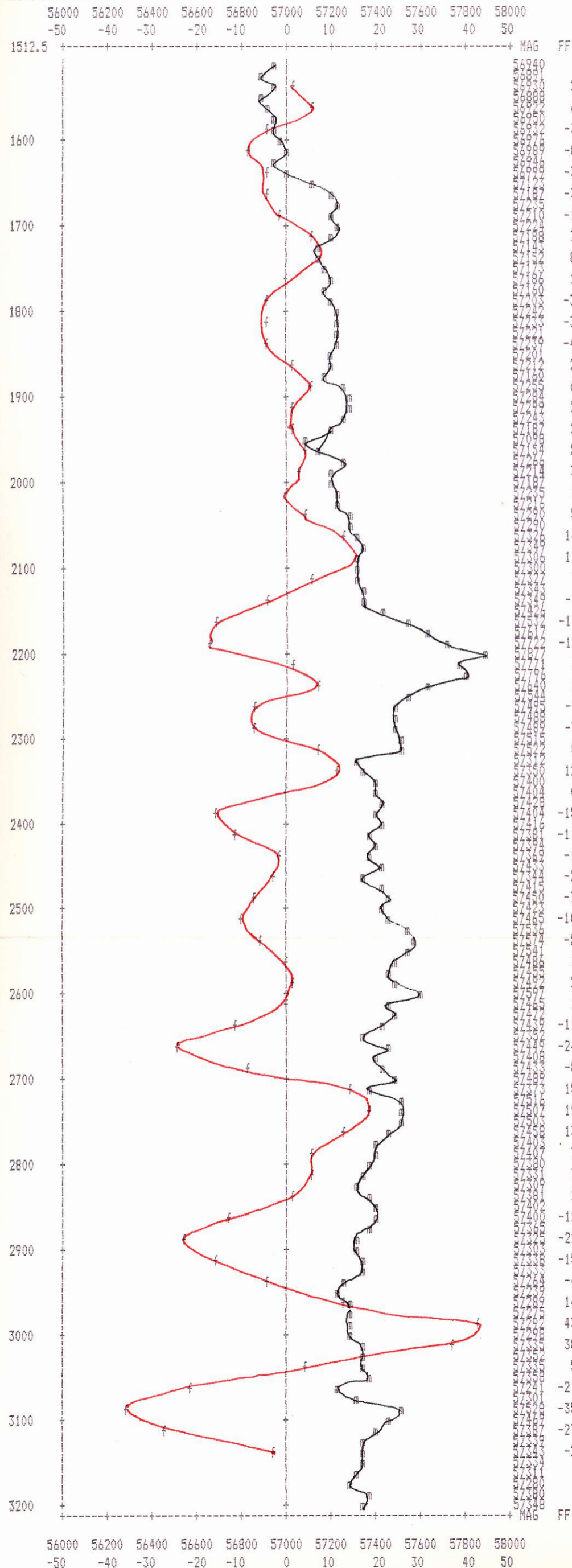
Date: 89/06/19

Station interval = 1 print position

magnetometer:- m           OUT OF RANGE MAG:- M

vlf ff:- f           OUT OF RANGE FF:- F

MULTI-DATA POINT:- o



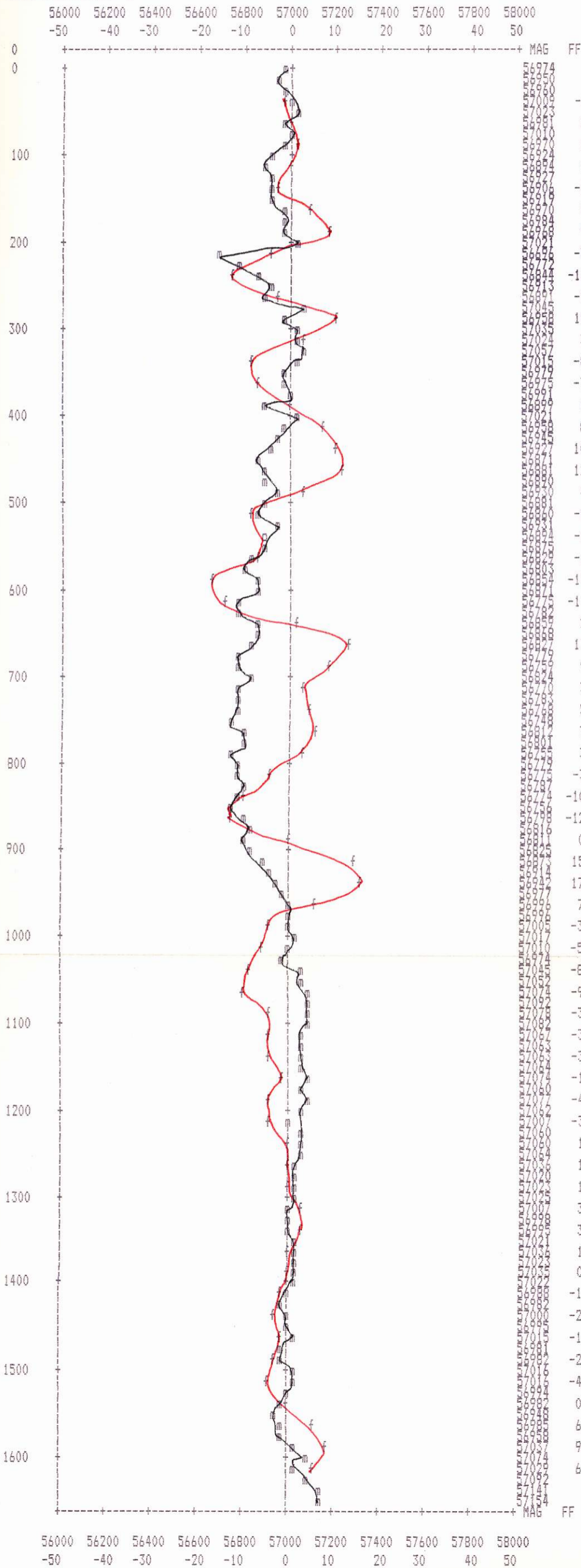
Spring Property Magnetometer & Fraser Filter (1989)

Line: 700 E

Date: 89/06/19

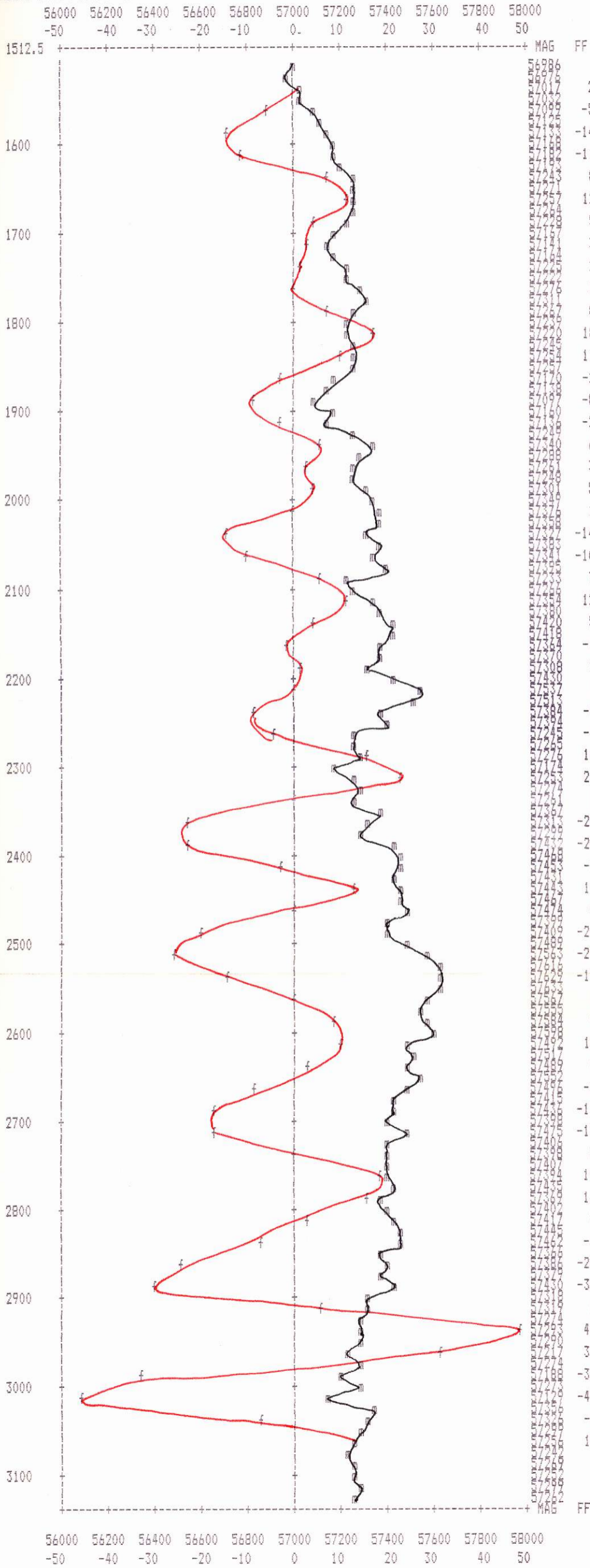
Station interval = 1 print position

magnetometer:- m          OUT OF RANGE MAG:- M  
 vlf ff:- f          OUT OF RANGE FF:- F  
 MULTI-DATA POINT:- o



Spring Property Magnetometer & Fraser Filter (1989)  
 Line: 600 E  
 Date: B9/06/19  
 Station interval = 1 print position

magnetometer:- m      OUT OF RANGE MAG:- M  
 vlf ff:- f      OUT OF RANGE FF:- F  
 MULTI-DATA POINT:- o



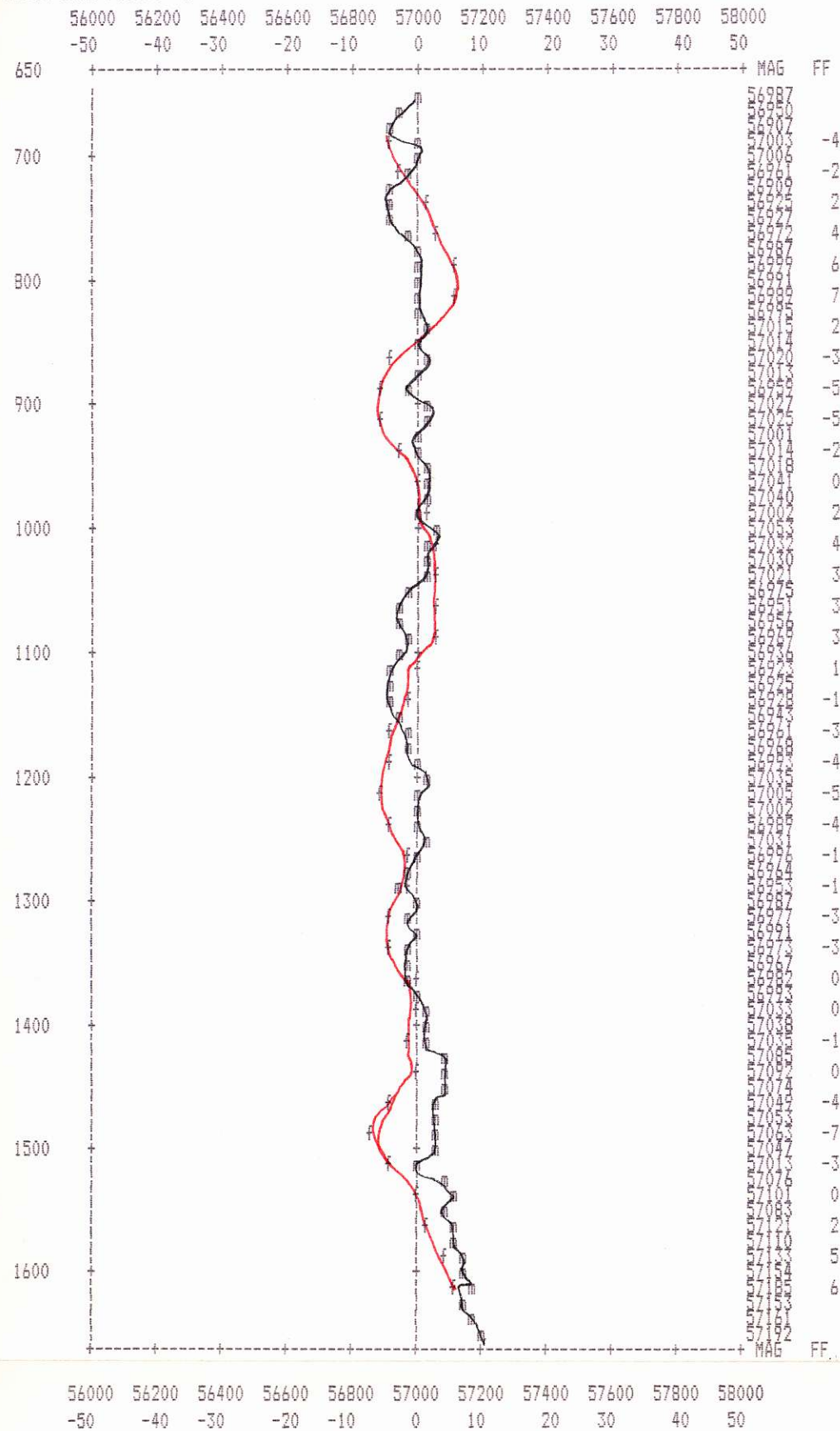
Spring Property Magnetometer & Fraser Filter (1989)

Line: 500 E

Date: 89/06/19

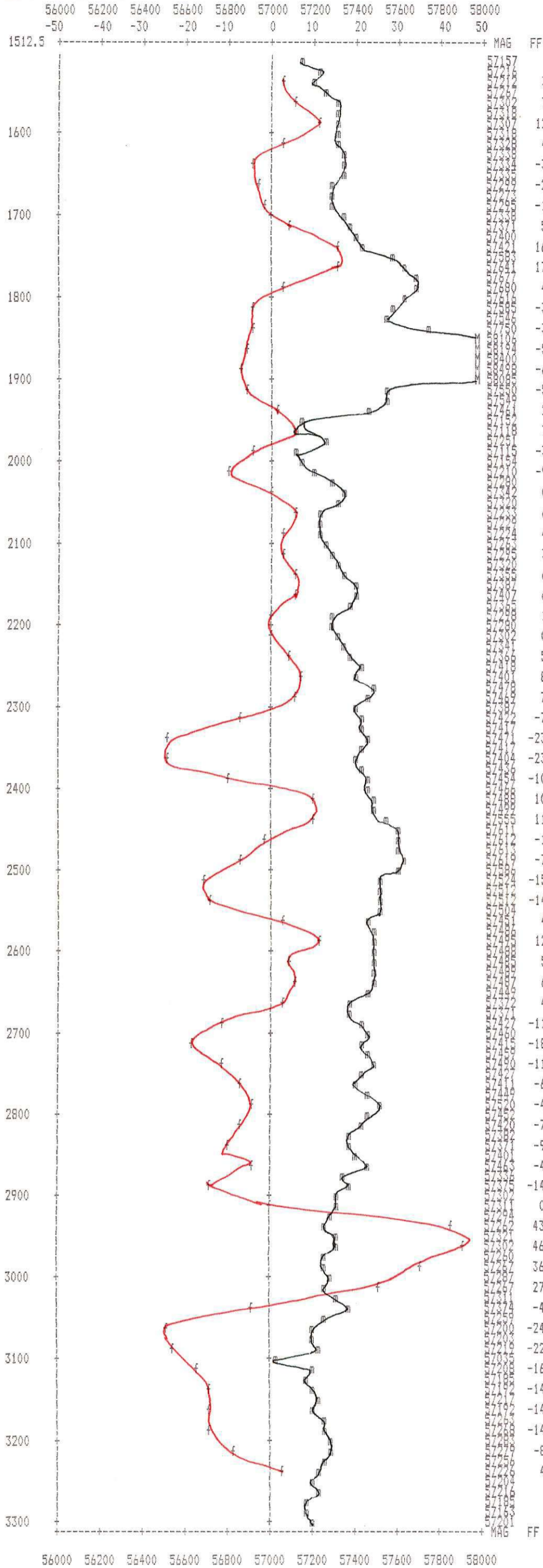
Station interval = 1 print position

magnetometer:- m           OUT OF RANGE MAG:- M  
 vlf ff:- f           OUT OF RANGE FF:- F  
 MULTI-DATA POINT:- a



Spring Property Magnetometer & Fraser Filter (1989)  
Line: 400 E  
Date: 89/06/19  
Station interval = 1 print position

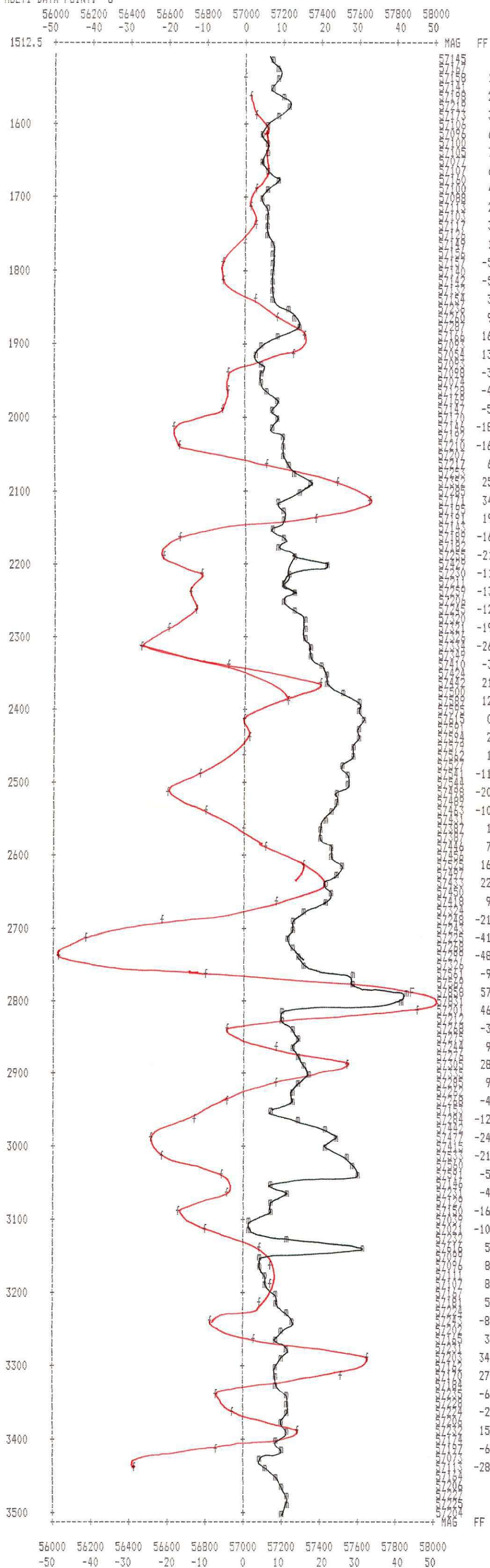
magnetometer: - m OUT OF RANGE MAG: - M  
vlf ff: - f OUT OF RANGE FF: - F  
MULTI-DATA POINT: - o



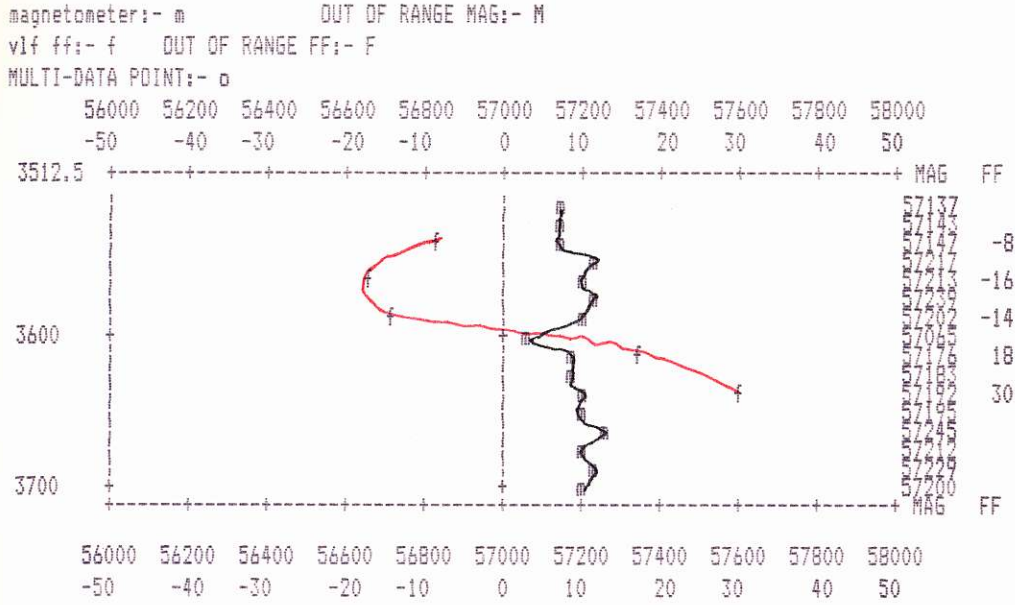


Spring Property Magnetometer & Fraser Filter (1989)  
 Line: 200 E  
 Date: 89/06/19  
 Station interval = 1 print position

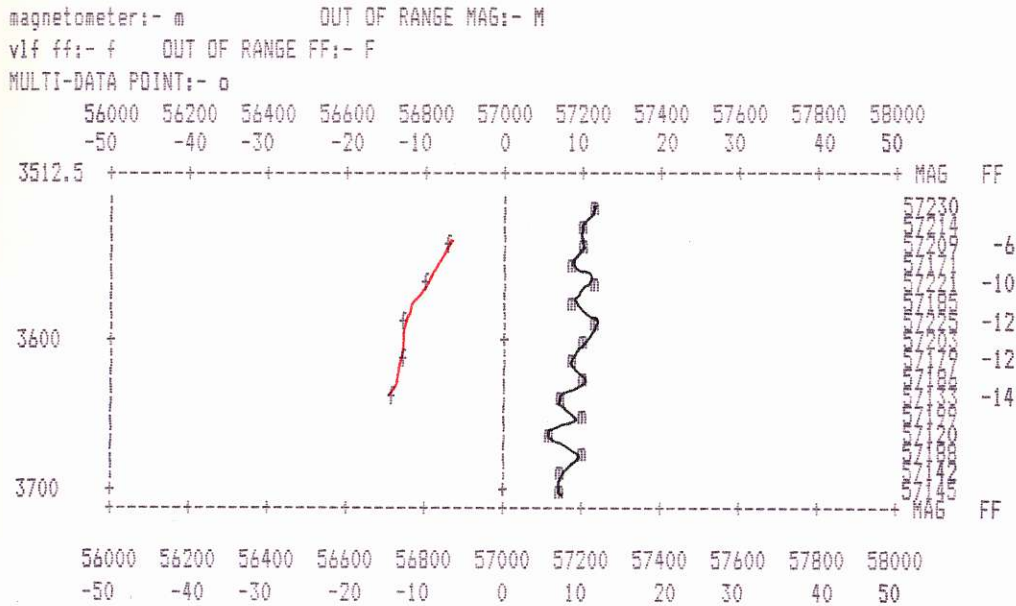
magnetometer:- m           OUT OF RANGE MAG:- M  
 vlf ff:- f           OUT OF RANGE FF:- F  
 MULTI-DATA POINT:- o



Spring Property Magnetometer & Fraser Filter (1989)  
 Line: 0  
 Date: 89/06/20  
 Station interval = 1 print position

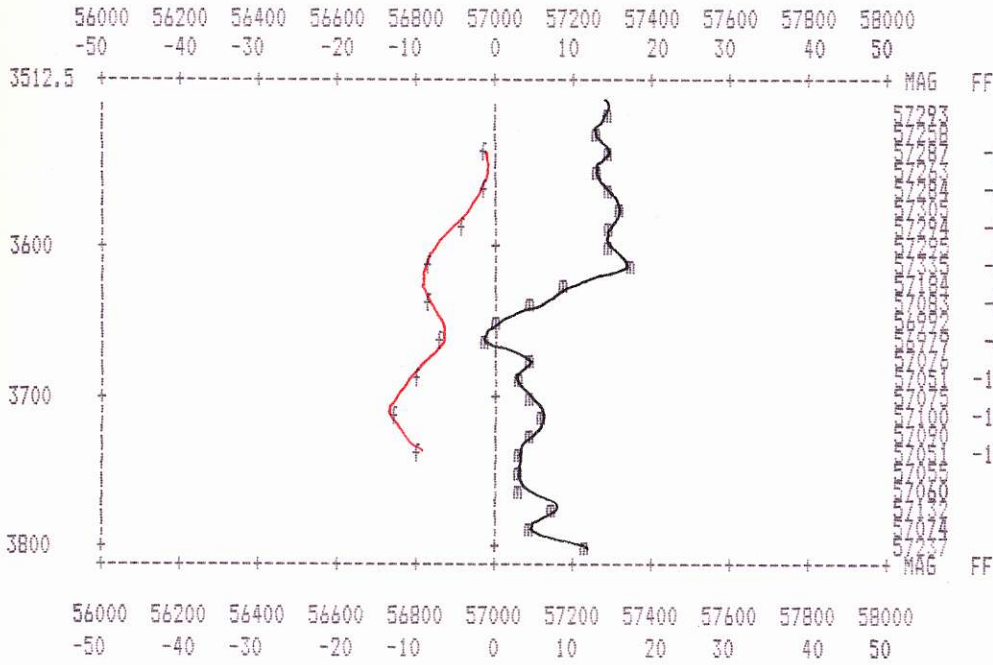


Spring Property Magnetometer & Fraser Filter (1989)  
 Line: 200 W  
 Date: 89/06/20  
 Station interval = 1 print position



Spring Property Magnetometer & Fraser Filter (1989)  
 Line: 400 W  
 Date: 89/06/20  
 Station interval = 1 print position

magnetometer:- m           OUT OF RANGE MAG:- M  
 vlf ff:- f           OUT OF RANGE FF:- F  
 MULTI-DATA POINT:- o



Spring Property Magnetometer & Fraser Filter (1989)

Line: 600 W

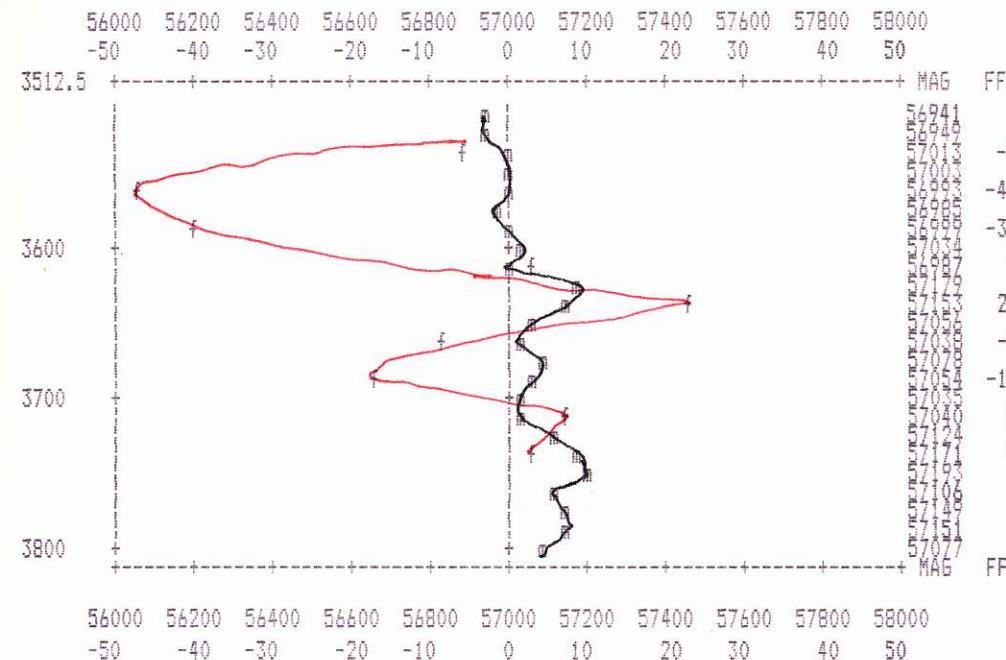
Date: 89/06/20

Station interval = 1 print position

magnetometer:- m           OUT OF RANGE MAG:- M

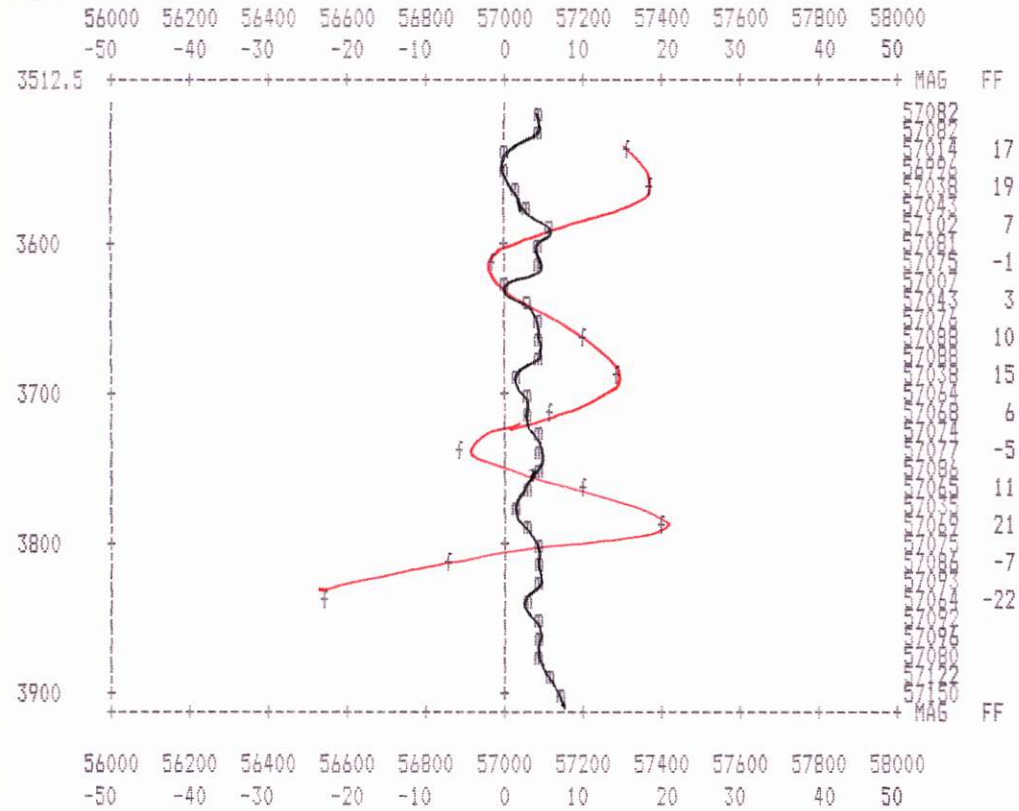
vlf ff:- f           OUT OF RANGE FF:- F

MULTI-DATA POINT:- o



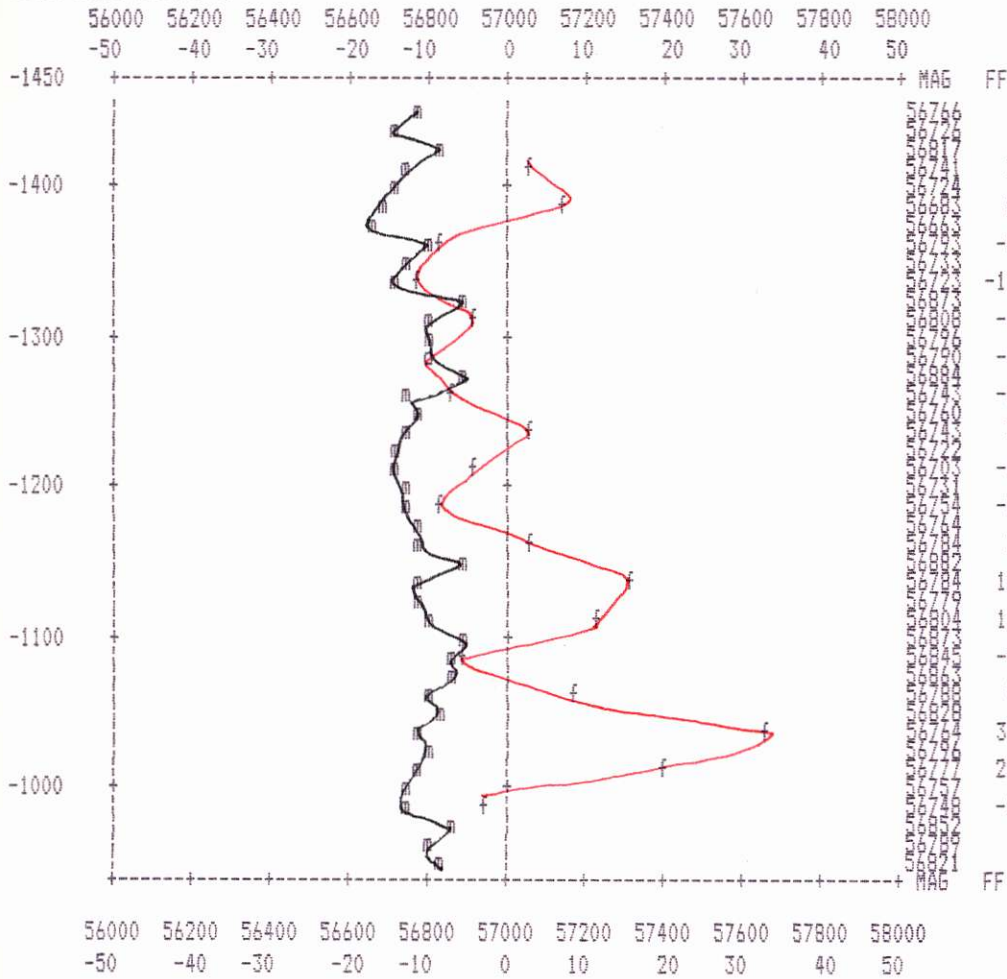
Spring Property Magnetometer & Fraser Filter (1989)  
 Line: 800 W  
 Date: 89/06/20  
 Station interval = 1 print position

magnetometer:- m            DUT OF RANGE MAG:- M  
 vlf ff:- f            DUT OF RANGE FF:- F  
 MULTI-DATA POINT:- o



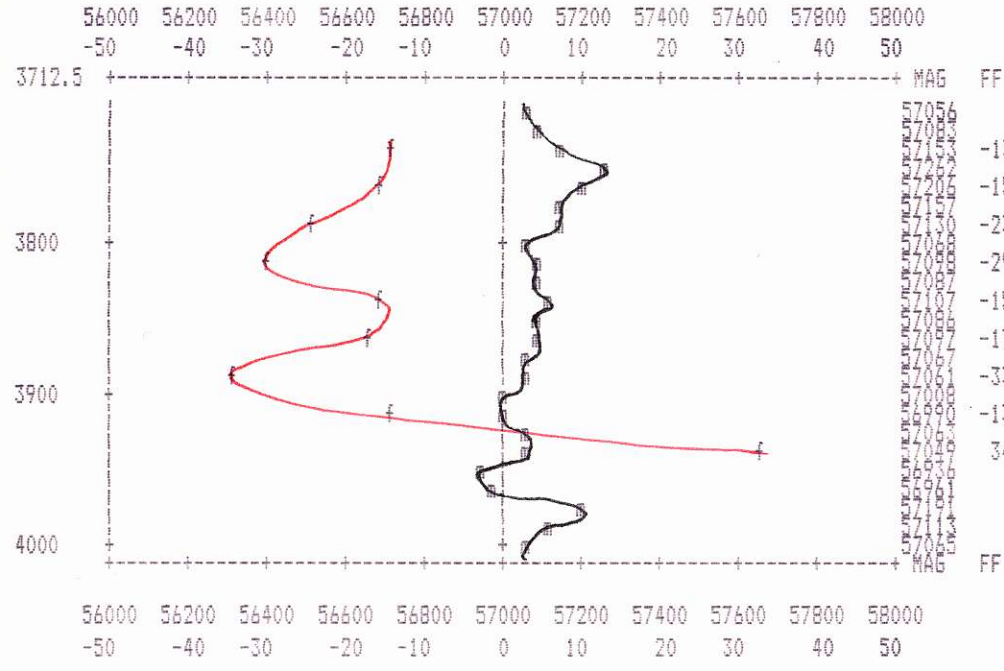
Spring Property Magnetometer & Fraser Filter (1989)  
 Line: 900 W  
 Date: 89/06/19  
 Station interval = 1 print position

magnetometer:- m           OUT OF RANGE MAG:- M  
 vlf ff:- f           OUT OF RANGE FF:- F  
 MULTI-DATA POINT:- o



Spring Property Magnetometer & Fraser Filter (1989)  
 Line: 1000 W  
 Date: 89/06/20  
 Station interval = 1 print position

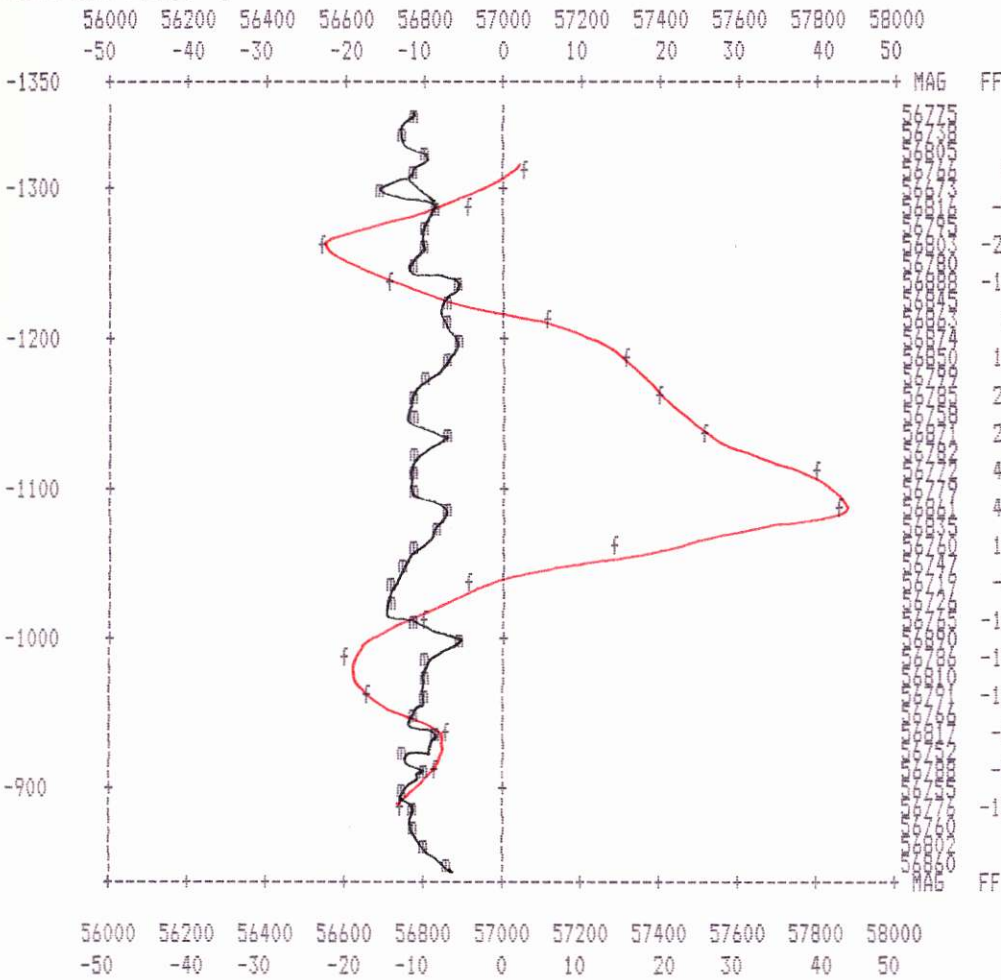
magnetometer:- m           OUT OF RANGE MAG:- M  
 vlf ff:- f           OUT OF RANGE FF:- F  
 MULTI-DATA POINT:- o





Spring Property Magnetometer & Fraser Filter (1989)  
 Line: 1100 W  
 Date: 89/06/19  
 Station interval = 1 print position

magnetometer:- m           OUT OF RANGE MAG:- M  
 vlf ff:- f       OUT OF RANGE FF:- F  
 MULTI-DATA POINT:- □





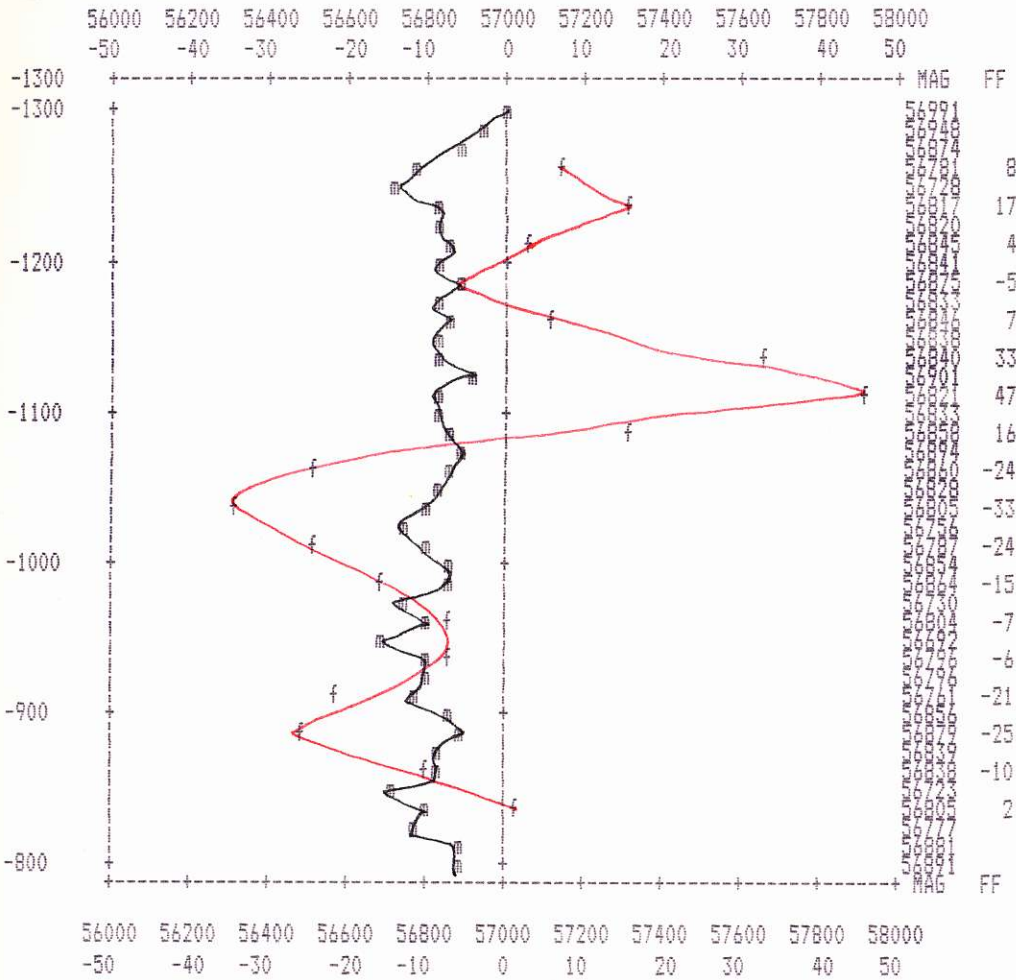
Spring Property Magnetometer & Fraser Filter (1989)

Line: 1275 W

Date: 89/06/19

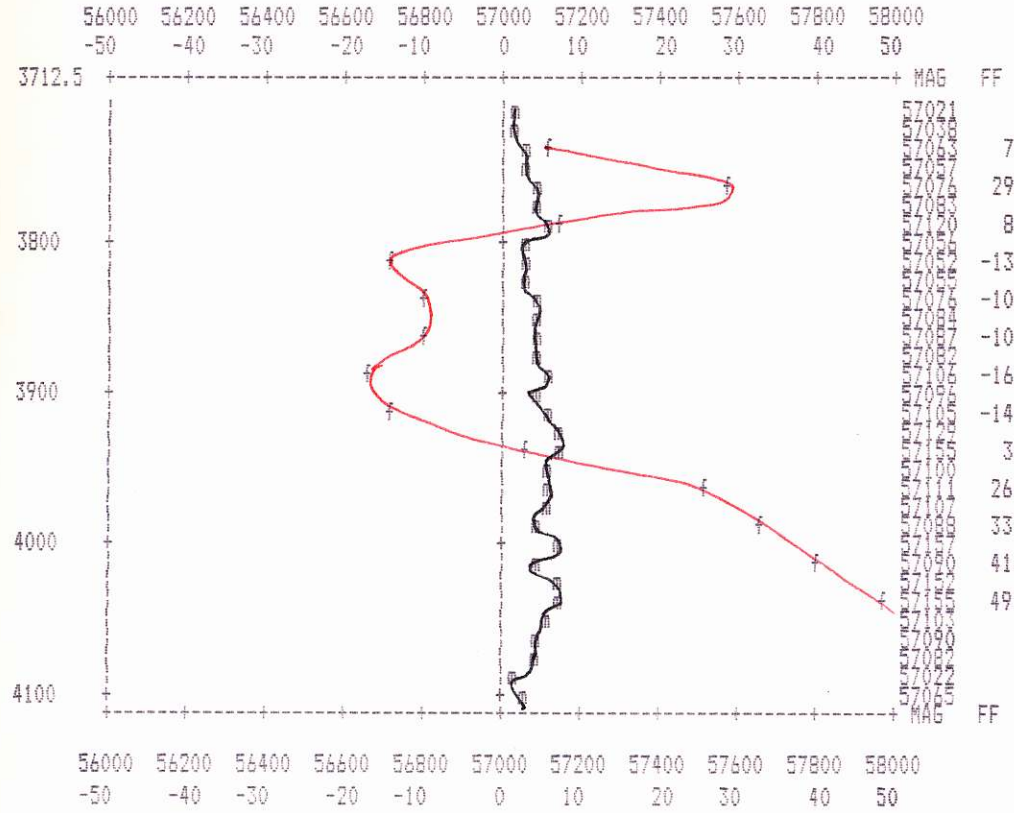
Station interval = 1 print position

magnetometer:- m           OUT OF RANGE MAG:- M  
 vlf ff:- f           OUT OF RANGE FF:- F  
 MULTI-DATA POINT:- o



Spring Property Magnetometer & Fraser Filter (1989)  
 Line: 1400 W  
 Date: 89/06/20  
 Station interval = 1 print position

magnetometer:- m           OUT OF RANGE MAG:- M  
 vlf ff:- f           OUT OF RANGE FF:- F  
 MULTI-DATA POINT:- o



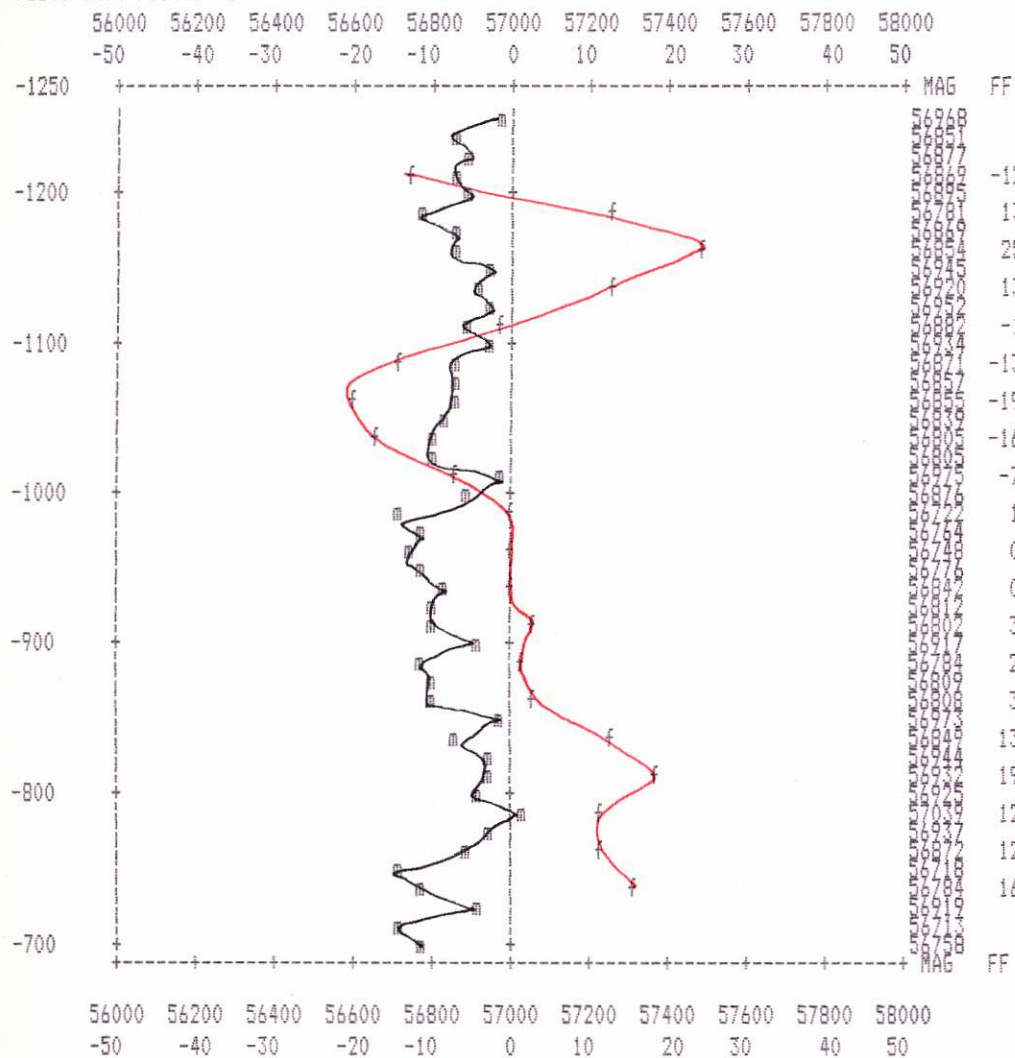
Spring Property Magnetometer & Fraser Filter (1989)

Line: 1450 W

Date: 89/06/19

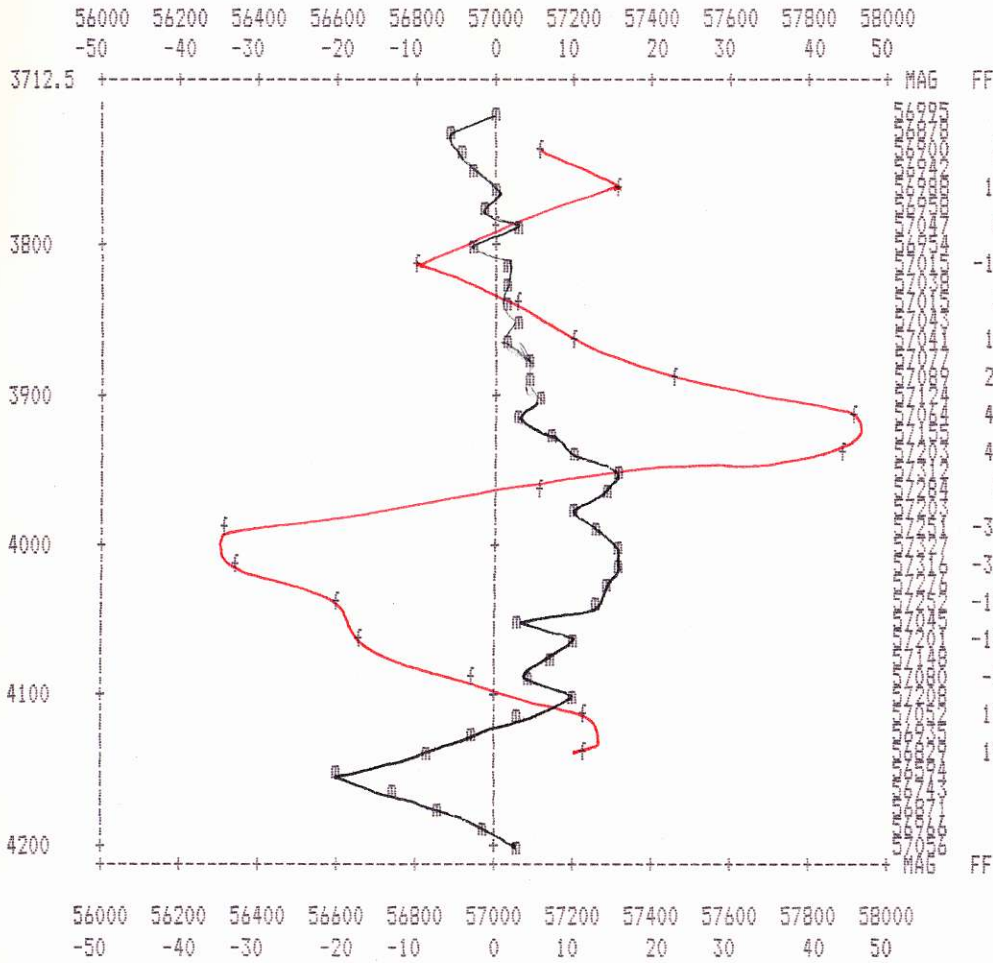
Station interval = 1 print position

magnetometer:- m           OUT OF RANGE MAG:- M  
 vlf ff:- f           OUT OF RANGE FF:- F  
 MULTI-DATA POINT:- o



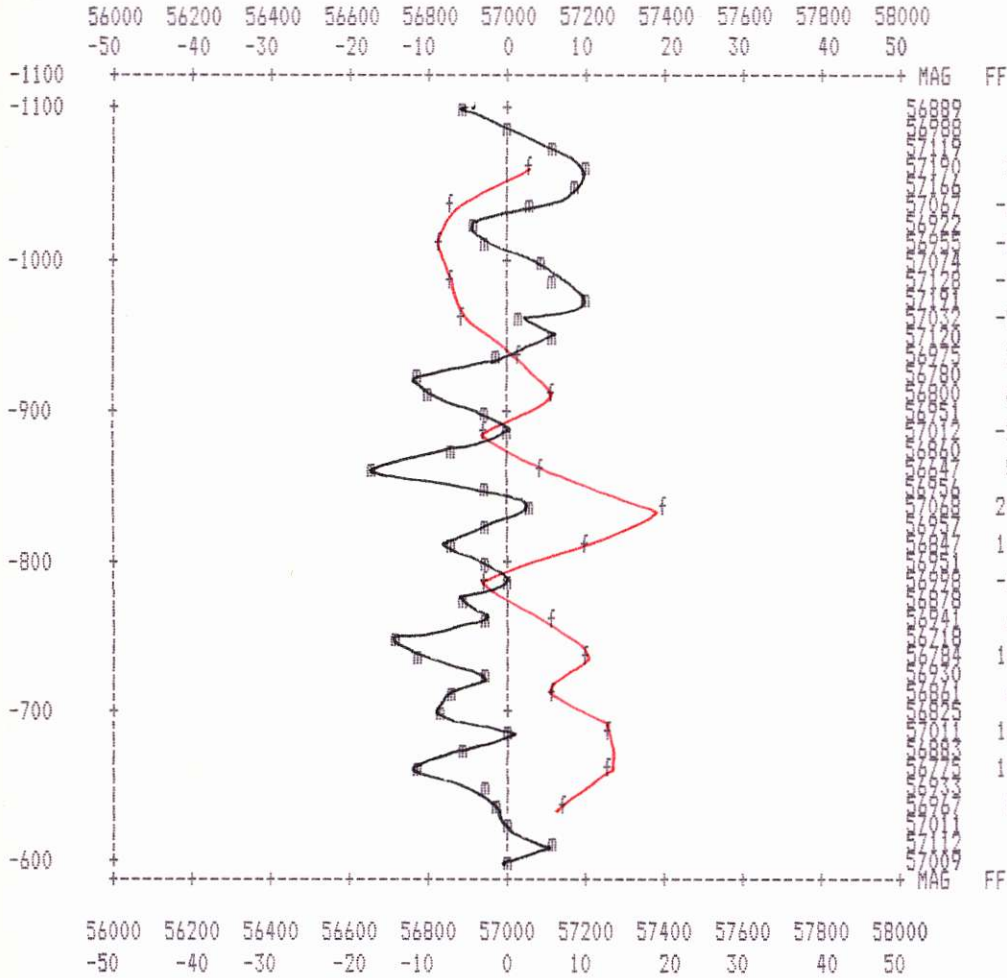
Spring Property Magnetometer & Fraser Filter (1989)  
 Line: 1600 W  
 Date: 89/06/19  
 Station interval = 1 print position

magnetometer:- m           OUT OF RANGE MAG:- M  
 vlf ff:- f           OUT OF RANGE FF:- F  
 MULTI-DATA POINT:- o



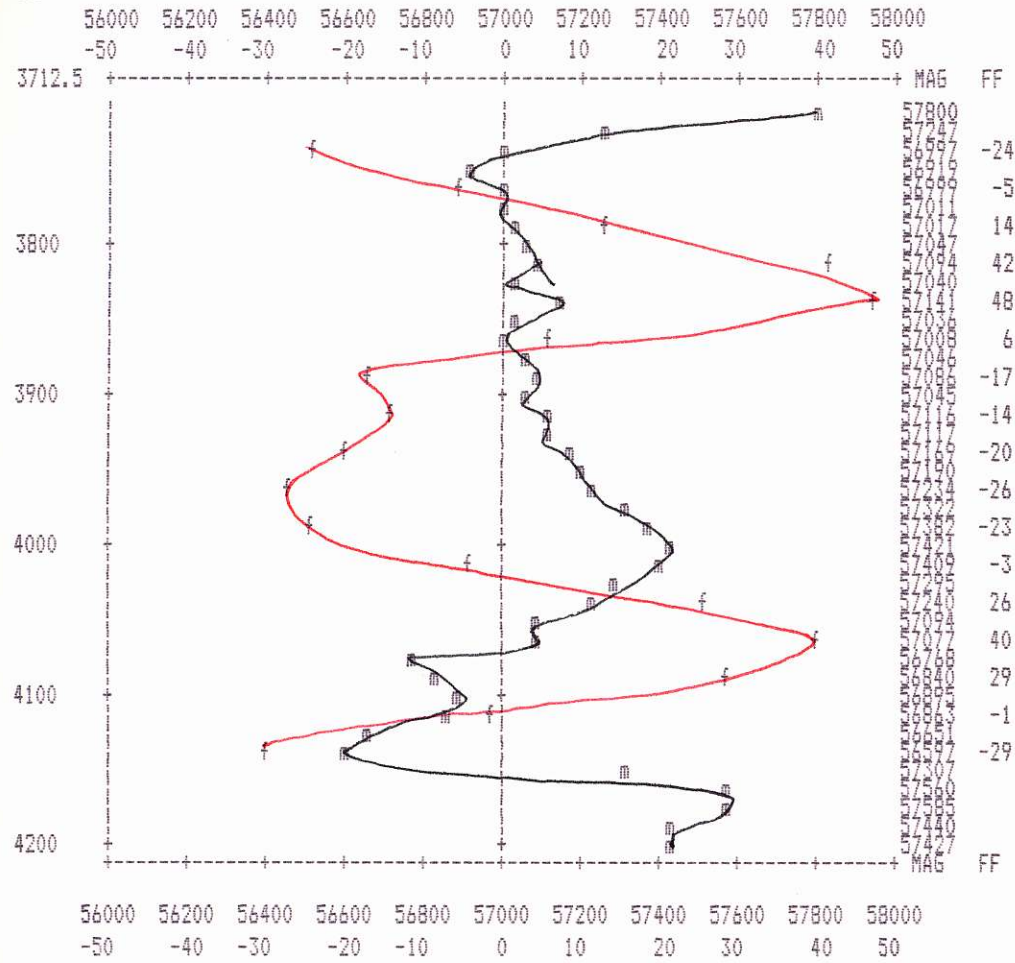
Spring Property Magnetometer & Fraser Filter (1989)  
 Line: 1675 W  
 Date: 89/06/19  
 Station interval = 1 print position

magnetometer:- m           OUT OF RANGE MAG:- M  
 vlf ff:- f           OUT OF RANGE FF:- F  
 MULTI-DATA POINT:- o



Spring Property Magnetometer & Fraser Filter (1989)  
Line: 1800 W  
Date: 89/06/19  
Station interval = 1 print position

magnetometer:- m      OUT OF RANGE MAG:- M  
vlf ff:- f      OUT OF RANGE FF:- F  
MULTI-DATA POINT:- o





Spring Property Magnetometer & Fraser Filter (1989)  
 Line: 2000 W  
 Date: 89/06/19  
 Station interval = 1 print position

magnetometer:- m           OUT OF RANGE MAG:- M  
 vlf ff:- f           OUT OF RANGE FF:- F  
 MULTI-DATA POINT:- o

