

861953

NUMERICAL FILING SYSTEM

LOCATION

(1) New Westminster Mining Division, British Columbia
(2) Harrison Lake Area, B.C.

N.T.S. 92-G-9E

NAME

(1) Sun God Resources Ltd.
(2) Harrison Lake Property
(3)

REMARKS: see below.

N.T.S. FILING SYSTEM

N.T.S. # 92-G-9E

FILE # 5193

LOCATION:

Lat 49°46'N

Long 122°11'W

Prov B.C.

Twp _____

NAME:

Property Harrison Lake

Company Sun God Res. Ltd.

B/F By _____

Date 22/10/84 Oct., 1984

D. REMARKS Exploration work indicates an anomalous Au-Ag-Pb-Zn target in a highly altered shear zone in volcanics. Gold values may be associated with Kuratka-type massive sulphide zones. Pending

TYPE:

Office Study _____

Field Exam _____

Co. Project _____

STATUS:

Recommended _____

For Record _____

Other Pending

FOX GEOLOGICAL CONSULTANTS LTD

410 - 675 W. Hastings St.,
Vancouver, B.C.
Canada V6B 1N2

Tel. (604) 669-5736

November 8, 1984

Mr. G.S.W. Bruce
Dome Exploration (Canada) Limited
P. O. Box 270
1 First Canadian Place
Toronto, Ontario
M5X 1H1

GSWB LBH DRS EAP
PROJECT _____
FI NOV 1 1984 LE
 PROPERTY DRILLING
 L CUTTING LEGAL
 TECHNICAL FINANCIAL
 OTHER _____

Dear Wally:

Re: Sun God Prospect, Harrison Lake Area, B.C.

Herewith are sampling results from our trip to Harrison Lake on October 30th. Samples were taken from the sample intervals reported by Sun God and the same sample numbers are used.

The showing, some 45 metres in length, is a sheared, quartzo-feldspathic biotite gneiss containing small amounts of disseminated pyrite (1%), quartz stringers, and several schistose zones up to several metres across. The best assay, 84GHR-164, returned 3.05gpt over 2 metres of massive gneiss. The remaining values are low.

Our sampling did not confirm the 9 metres of 0.67opt gold previously reported by Sun God from this showing. The sampling did, however, confirm the latest results reported in their news release of October 5th.

Attached are some photos that provide general views of the showing and sampled area.

Yours truly,

FOX GEOLOGICAL CONSULTANTS LTD.


P. E. Fox, Ph.D., P.Eng.

PEF/af

Encl.

ACME ANALYTICAL LABORATORIES LTD.
852 E. HASTINGS, VANCOUVER B.C.
PH: (604)253-3158 COMPUTER LINE:251-1011

DATE RECEIVED OCT 31 1984

DATE REPORTS MAILED

Nov 6/84

GEOCHEMICAL ASSAY CERTIFICATE

SAMPLE TYPE : ROCK - CRUSHED AND PULVERIZED TO -100 MESH.
Au, Ag, Pd, Pt - 10 GM FIRE ASSAY CONCENTRATION, HNO₃ LEACHED,
AQUA REGIA DIGESTION, GRAPHITE FURNACE AA ANALYSIS.

ASSAYER *D. Toyne* DEAN TOYE, CERTIFIED B.C. ASSAYER

FOX GEOLOGICAL PROJECT# 138 FILE# 84-3222

PAGE# 1

SAMPLE		Au** ppb
84GHR-158	3m	245
84GHR-159	2	140
84GHR-160	3	40
84GHR-161	2	35
84GHR-162	2	18
84GHR-163	2	8
84GHR-164	2	3050
84GHR-165	2	56
84GHR-166	2	27
84GHR-167	1	575
84GHR-168	1	32
84GHR-169	1	12
84GHR-170	1	4
84GHR-171	1	10
84GHR-172	1	14
84GHR-173	1	12
84GHR-174	1	10
84GHR-175	1	8
84GHR-176	1	10
84GHR-177		8
84GHR-178	1	20
84GHR-179	1	16
84GHR-180	1	21
84GHR-181	1	11
84GHR-182	1	16
84GHR-183	2	17
84GHR-184	2	10
84GHR-185	2	12
84GHR-186	2	15

FOX GEOLOGICAL CONSULTANTS LTD

410 - 675 W. Hastings St.
Vancouver, B.C.
Canada V6B 1N2

Tel. (604) 669-5736

October 26, 1984

Mr. G.S.W. Bruce
Dome Exploration (Canada) Limited
P. O. Box 270
1 First Canadian Place
Toronto, Ontario
M5X 1H1

GSWB	LBH	DRS	EAP
PROJECT _____			
FI	NOV 2 - 1984		LE
<input type="checkbox"/>	PROPERTY	<input type="checkbox"/>	DRILLING
<input type="checkbox"/>	L. CUTTING	<input type="checkbox"/>	LEGAL
<input type="checkbox"/>	TECHNICAL	<input type="checkbox"/>	FINANCIAL
<input type="checkbox"/>	OTHER	_____	

Dear Wally:


Re: Sun God Resources, Harrison Lake Prospect

Enclosed are location maps, prospectus data and recent news releases describing Sun God's Harrison Lake gold prospect. The reports are not particularly informative and discussions between Sally Topham, a potential "investor", and Stu Stubbs of Sun God were even less revealing. In any event, all assays reported in Sun God's October 5th news letter seem to have been taken from the same outcrop.

The property is readily accessible from Vancouver, hence a quick visit and sampling job will probably answer most questions. I will try to make an unofficial visit Tuesday/Wednesday of next week.

Yours truly,

FOX GEOLOGICAL CONSULTANTS LTD.



P. E. Fox, Ph.D., P.Eng.

PEF/af

Encl.

For File data

Pending

Sun God.

Harrison Lake.





SHEAR
ZONE





← 3m →



Dome Exploration (Canada)

sl god resources ltd.

Fourth Floor,
535 Howe Street,
Vancouver, B.C.
Canada V6C 2C2
(604) 669-4544

NEWS RELEASE

October 5, 1984

Results from a sampling and mapping program on the Harrison Lake Property indicate an anomalous gold target in a highly altered shear zone. Initial rock chip samples over a 9 metre (30 feet) width indicated 0.67 oz/t Au, 0.22 oz/t Ag, 0.55% Pb and 0.19% Zn.

Follow-up mapping and sampling established the probable source as sulfides, associated with narrow irregular quartz veining, which pokes through the complexly mineralized and altered zone. The follow-up sampling consisted of one to three metre continuous channel samples with the following results.

Dome Mines Limited

Sample #	Au (ppb)	Width (m)
84HVT 158	260	3
159	50	2
160	65	3
160A	130	2
161	95	2
162	35	
163	25	
164	45	
165	770	2
166	250	2
167	110	
168	170	

The gold mineralization coincides with an underlying VLF-EM conductive anomaly and is spatially located on the flank of a discreet magnetic anomaly (which has been interpreted as an intrusive body at depth). The altered zone may well represent the top of an important gold bearing hydrothermal system at depth.

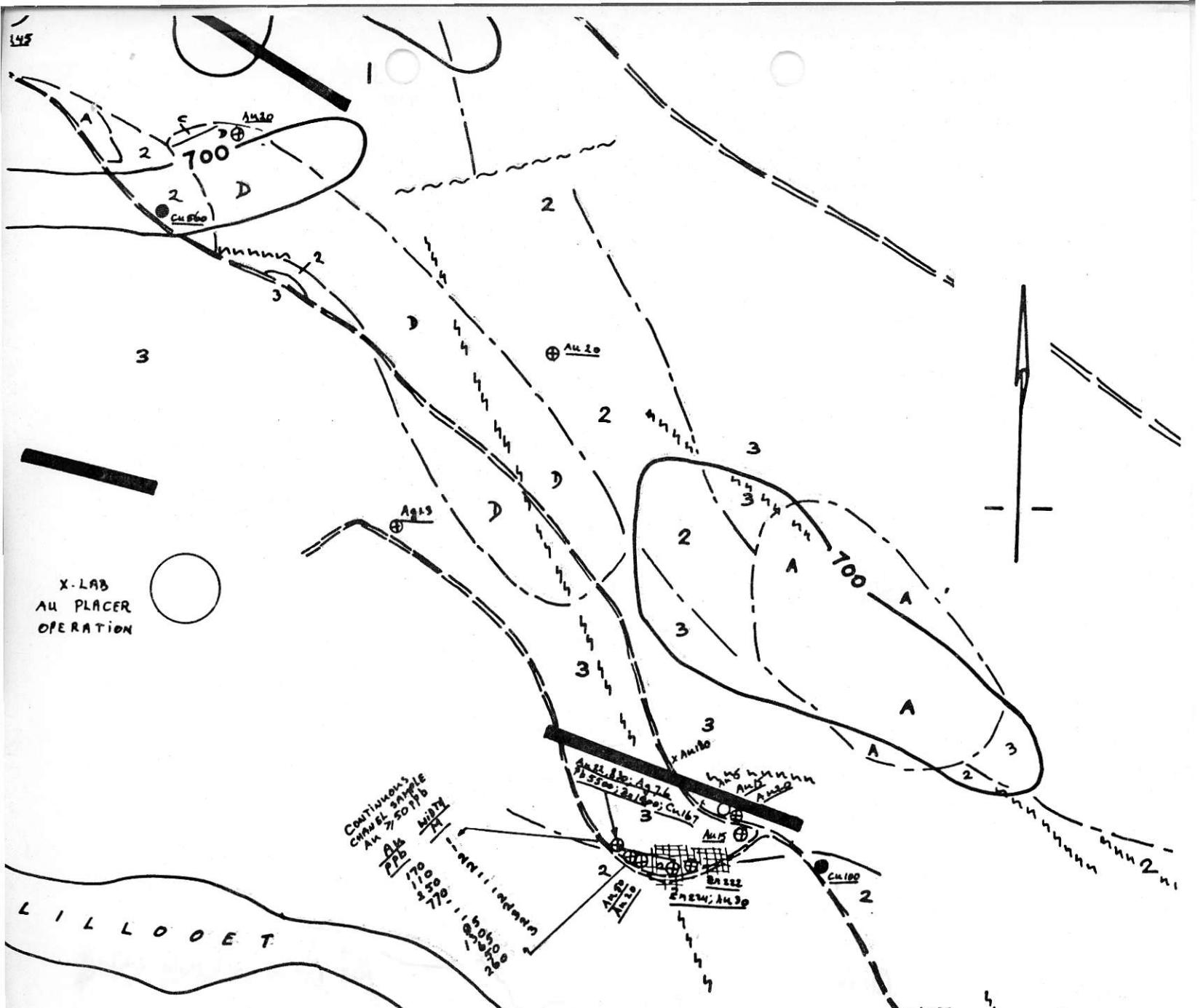
The Harrison Lake Property is 100% owned by the Company and is located at the north end of Harrison Lake, British Columbia. In addition to conducting further work on Harrison Lake, the Company is actively looking at other properties, the merit of which will be reported upon shortly.

DOMES MINES (CANADA) LIMITED

This news release has been prepared by the undersigned who claims responsibility for its factuality. The Vancouver Stock Exchange has neither approved nor disapproved the information contained herein.

W. S. W. Bruce

[Handwritten signature]
J. Casey Forward
President



X-LAB
AU PLACER
OPERATION

LEGEND

Twin Island Camp

- 1 biotite schist Conglomerate
- 2 biotite gneiss & schist; >20% mafics
- 3 hornblende gneiss & felsic gneiss

Coast Plutonic Complex

- A Diorite
- B Hornblende Monzonite
- C Quartz Monzonite
- D Hornblende Granite Gneiss

--- FAULT

X 1983 Anomalies

●●● 1984 Anomaly: panned stream sediment; soil; rock chip; panned soil
 Au >15 ppb; Ag >1 ppm; Cu >100 ppm; Pb >50 ppm; Zn >200 ppm

--- Ecological Contact

○ 600 MAGNETOMETER ANOMALY

█ VLF-EM ANOMALY

HARRISON LAKE PROPERTY

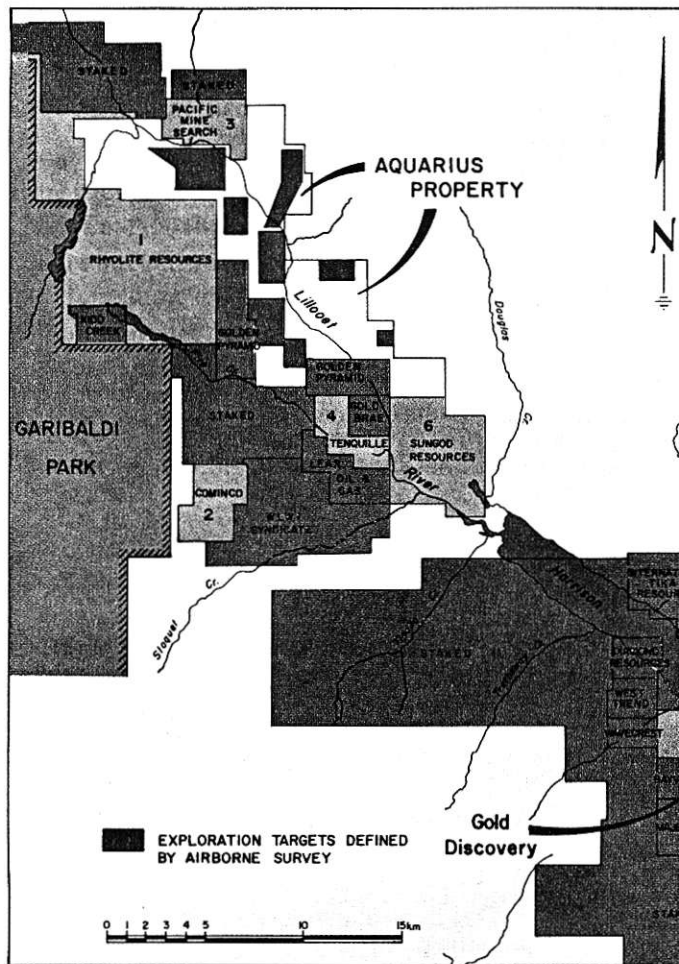


FIGURE 5

The Company staked several thousand acres of mining claims in the Harrison Lake Gold Camp, Harrison Lake B.C., in early 1983 (Fig. 5). The claims cover favourable gold-bearing volcano-genic formations of the Fire Lake Group near the north end of Harrison Lake. Within this general area, many interesting gold-bearing occurrences have been found over the years by limited prospecting activity. Recent age dating work by government surveys has placed the age of favourable gold-hosting rocks of this area with those of the famous Britannia Mine, near Vancouver.

Discoveries in the area include important gold indicators such as hot spring deposits, placer gold accumulations and anomalous gold values associated with volcanic and sedimentary rocks. They strongly suggest that not only might gold be associated with massive sulfide deposits of the

area, but that gold is present in numerous (epigenetic) structures that cross-cut the formations as well.

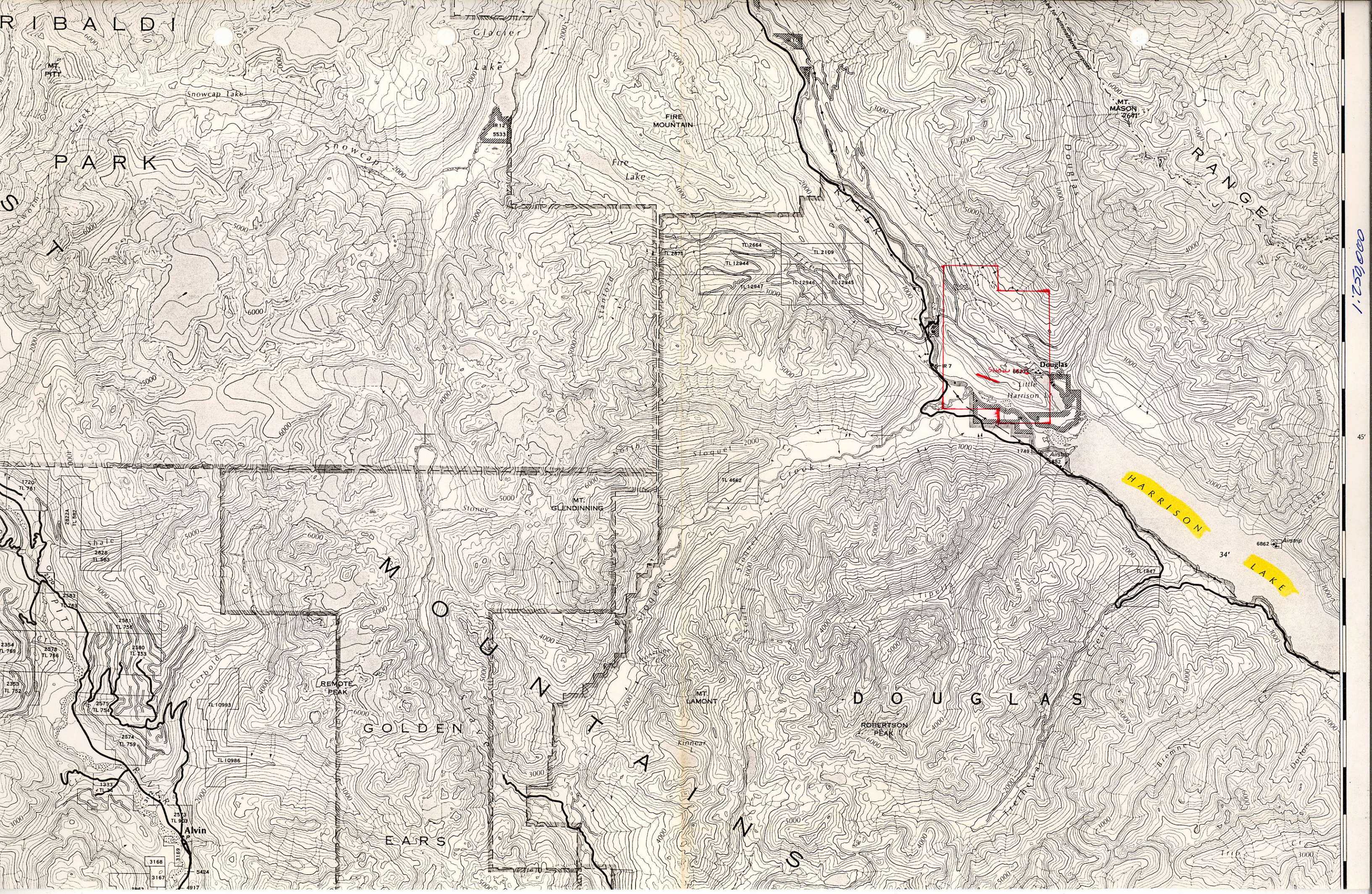
Gold in quartz was first discovered in 1896, on the Money Spinner property on Fire Mountain (Area 1). Horizons hosting gold-bearing massive sulfide mineralization are present on Cominco's Slo property (Area 2) and on the Skookum and Chuck claims (Area 3). The Hades-Brimstone claims of Tenquille Resources include a 1,000 x 350 metre anomalous gold zone of pyritic sericitic schists which have values in gold to 1950 ppb (0.057 oz./ton) (Area 4).

On the main property of Rhyolite Resources (Area 5), considerable drilling was carried out in 1983 and a drill indicated reserve of 250,000 tons of 0.1 oz./ton gold has been reported. Airborne magnetometer work on the property has reportedly indicated a close association between areas of high magnetic intensity and the areas of gold accumulation.

Recent exploration work on the Sun God property (Area 6) comprising an airborne magnetometer and VLF-EM survey, has identified magnetic anomalies and conductive zones which, with ground prospecting and geological follow-up, have been found to be closely associated with zones of intense alteration, and sulfide zones carrying massive pyrite and anomalous gold values.

The first stage of exploration on the Aquarius ground, comprising a similar airborne magnetometer and VLF-EM survey, has been completed. Very exciting data have resulted, including magnetic anomalies of the types found close to gold and associated alteration zones on the Rhyolite, Sun God and Tenquille properties. In addition, strong conductor zones, which on Fire Mountain super-impose upon gold-bearing vein systems located on the old, crown granted mineral claims, and which cross the Aquarius ground, conform to and follow the major northwest-southeast structural system that controls the location of Harrison Lake and the Lillooet River and Fire Creek valley systems. Key exploration targets on the Aquarius ground resulting from the airborne survey are shown on the accompanying map (Fig. 5).

Aquarius plans an aggressive ground follow-up exploration program to check these airborne targets and is actively seeking joint venture partners for this promising venture which can be explored on a year-round basis.



RIBALDI

PARK

S

RANGE

MT. MASON 7641'

FIRE MOUNTAIN

DOUGLAS

Douglas

Little Harrison

R7

SNOW 6630'

HARRISON

LAKE

34'

Airstrip

MT. GLENDINNING

M

O

N

GOLDEN

A

DOUGLAS

MT. LAMONT

ROBERTSON PEAK

REMOTE PEAK

EARS

N

S

Alvin

3168
3167

000252:1

45

