

AUG 15 1974

WORK REPORT
FOR THE
QUIL CLAIMS
QUILCHENA CREEK COPPER PROSPECT
BY
C.M. REBAGLIATI, B.Sc., P. ENG.
NEWCONEX CANADIAN EXPLORATION LTD.
VANCOUVER, B.C.
AUGUST 13, 1974
92-H-15

861637

#4513

WORK REPORT
FOR THE
QUIL CLAIMS
QUILCHENA CREEK COPPER PROSPECT
BY
C.M. REBAGLIATI, B.Sc., P. Eng.
NEWCONEX CANADIAN EXPLORATION LTD.
VANCOUVER, B.C.
AUGUST 13, 1974
92-H-15

LOCATION

The Quil Claims are centred along the Quilchena Creek valley approximately 14 miles southeast of Merritt and 2 miles north of Pothole Lake.

ACCESS

Access to the property can be gained, with a 2 wheel drive vehicle, by travelling 14 miles southward on Highway #5 from Merritt and thence onto an old logging road that leads eastward away from the highway to Quilchena Creek.

INTRODUCTION

Two copper occurrences separated by a 1,000 foot wide gravel-filled valley are located on the east and west banks of the Quilchena Creek valley. In the past, other parties who held the ground cut approximately 3,000 feet of bulldozer trenches. Copper mineralization occurs in all of the trenches on both sides of the valley, and in one trench 1,000 feet of more or less continuous mineralization is exposed. Chalcopyrite is the principal copper mineral present. It occurs as very fine-grained disseminations, as fracture filling or as thin sheets along fracture planes and as coarse blebs within narrow east-west striking quartz veinlets.

The rock is a highly-fractured, chloritic, epidotized and partly-recrystallized Nicola Group pyroclastics. Some

sections have undergone weak skarnification.

Two prominent directions of fracturing are exposed in the trenches. Strong fractures and shear zones strike east-west perpendicular to the north-south set of fractures that parallel the northern extension of the Summers Creek Fault along which the Quilchena Creek valley lies.

MAGNETIC SURVEY

The aeromagnetic maps published by the government show a relatively weak but well defined magnetic anomaly centred in the Quilchena Creek valley. This anomaly lies between the two showings on opposite sides of the valley.

It was considered that this magnetic feature might represent a mineral deposit hidden below the gravels in the valley bottom and that the widespread but low grade copper values in the trenches might represent fringe mineralization.

The purpose of the ground magnetic survey was two fold:

- (1) To accurately locate and define on the ground the magnetic anomaly indicated on the aeromagnetic maps.
- (2) To run a detailed profile over the peak of the anomaly to determine the depth of overburden to the top of the magnetic body.

RESULTS

It was found that the aeromagnetic anomaly was mislocated some 600 feet to the east. This placed the apex directly over the showing on the west bank of the valley in an area of outcrop and rock exposed in trenches. It was, therefore, not necessary to carry out the detailed profile.

It is apparent that magnetic minerals accompany the copper mineralization in the showings on both sides of the valley. There is no indication, however, that a magnetic body with associated copper mineralization lies in the valley floor or that one is continuous between the two showings.

CONCLUSION

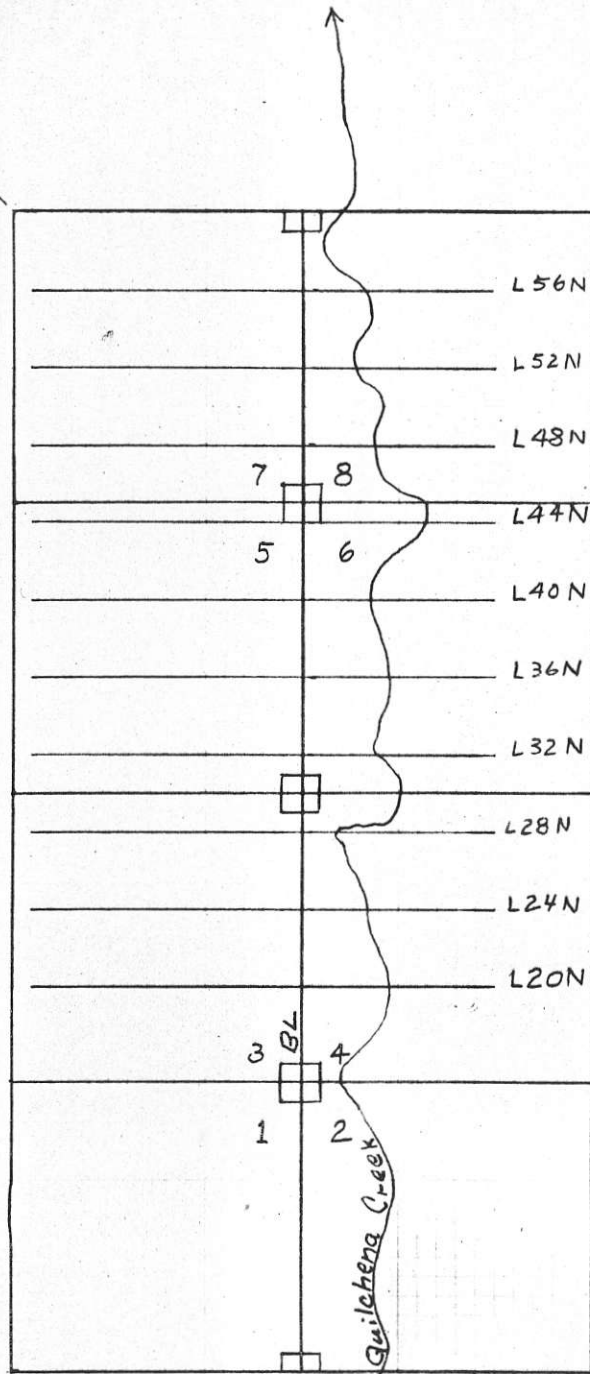
Since no strongly magnetic rocks are indicated, along the Summers Creek Fault in the valley between the two copper showings, the potential of the prospect has been greatly diminished. No other areas within the property warrant further exploration.

RECOMMENDATIONS

No further exploration activities should be undertaken and the claims should be allowed to expire.

[Handwritten signature]

14 miles to
Meritt



2 miles to
Patrole Lake

Quil Claims

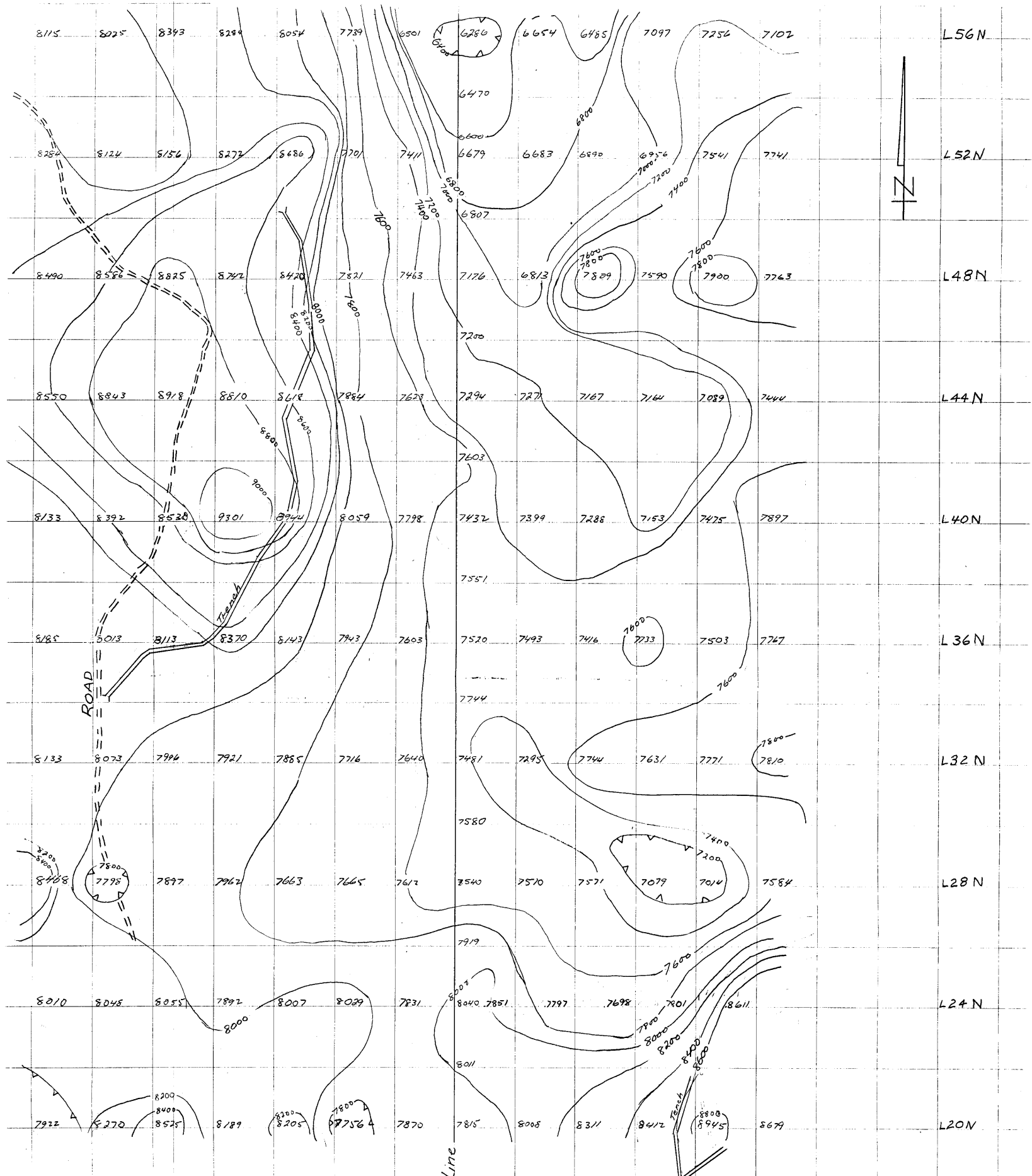
Grid and Claim Location Map

Scale 1 in = 1000 Ft

92-H-15

August 13, 1974

W. R. Reboyle



The base line is located in the valley bottom

Base Line

Instrument
 geoMetrics Model G 816
 Portable Proton Magnetometer

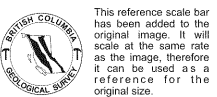
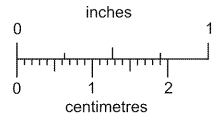
Magnetometer Survey
 Quil Claims
 Quikchena Creek
 92-H-15

Note 50,000's have been subtracted from each reading

August 9, 1974



[Handwritten signature]



This reference scale bar has been added to the original image. It will scale at the same rate as the image, therefore it can be used as a reference for the original size.