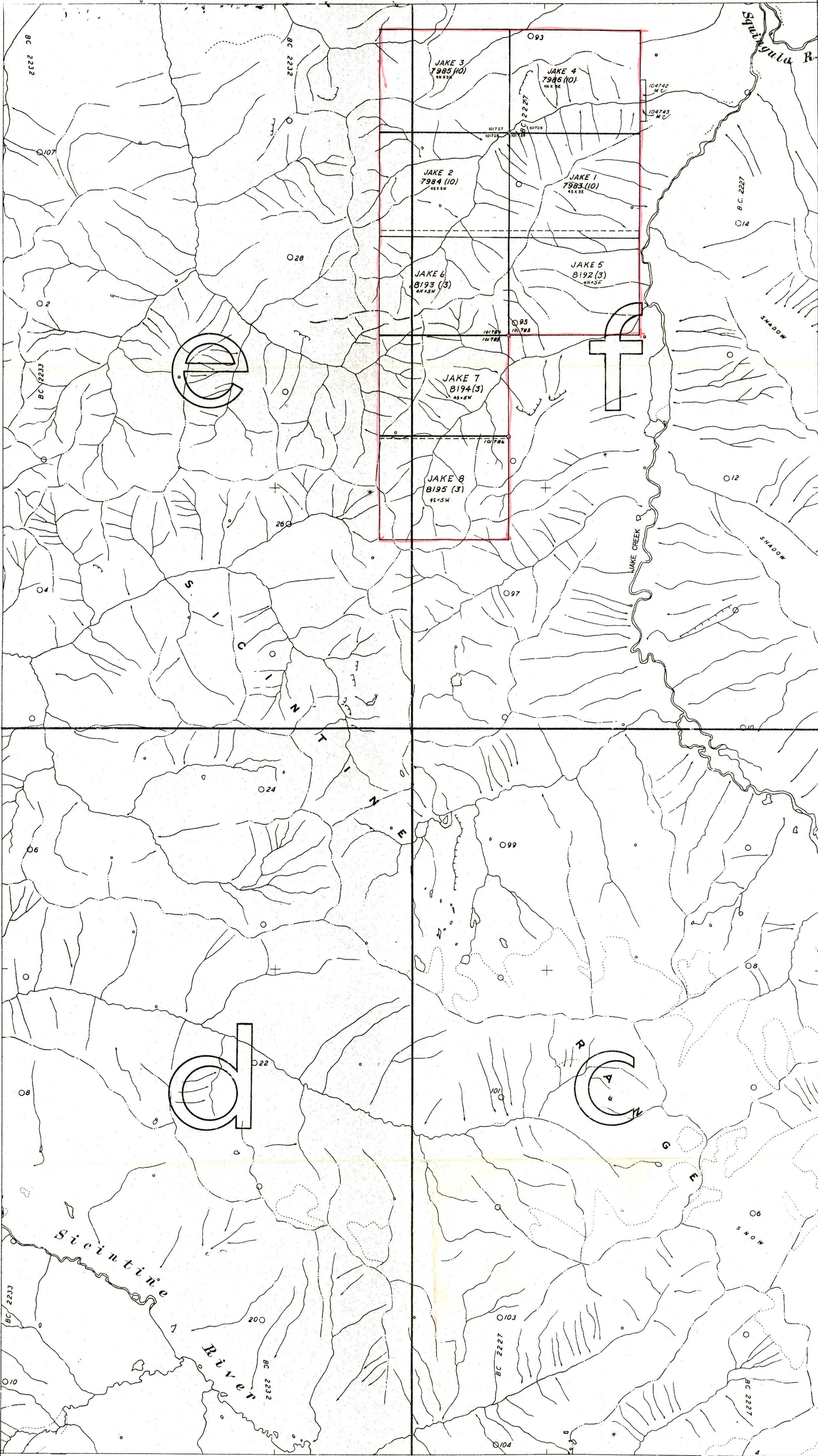
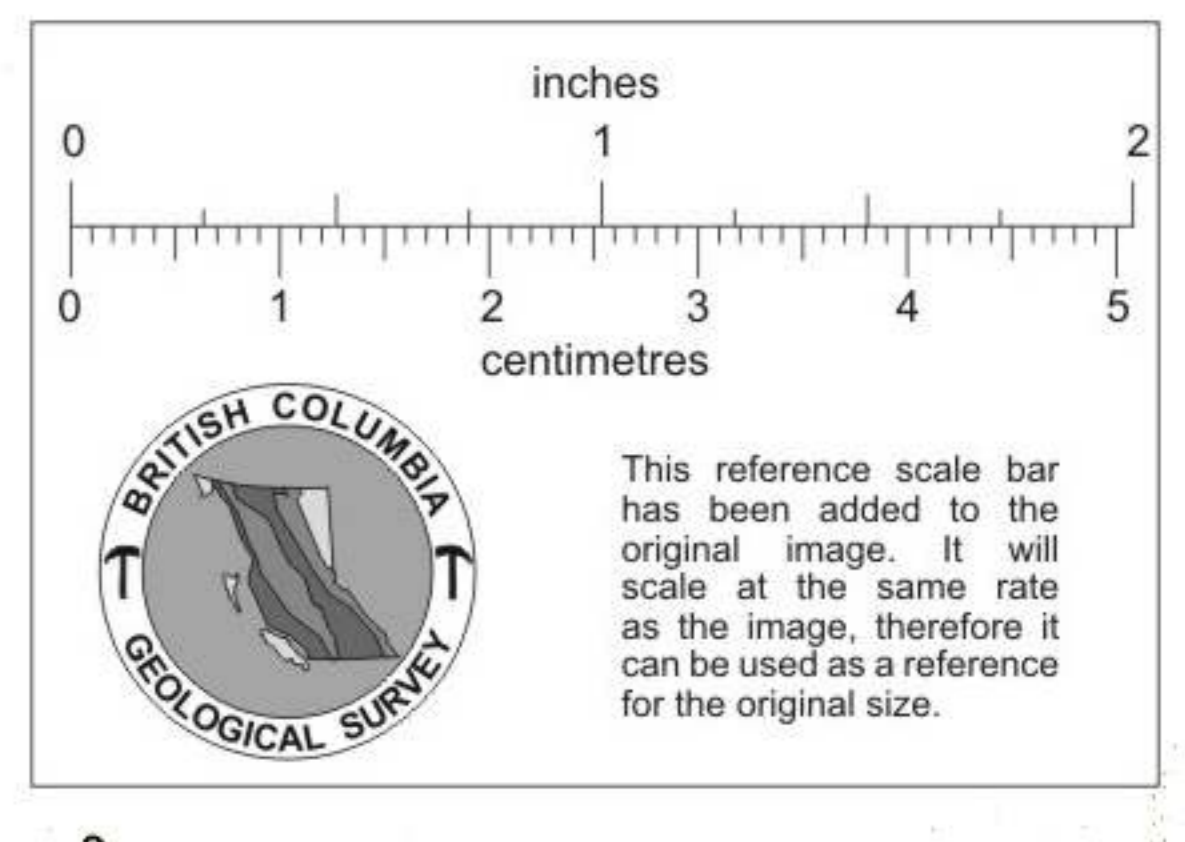


M 94D/3W



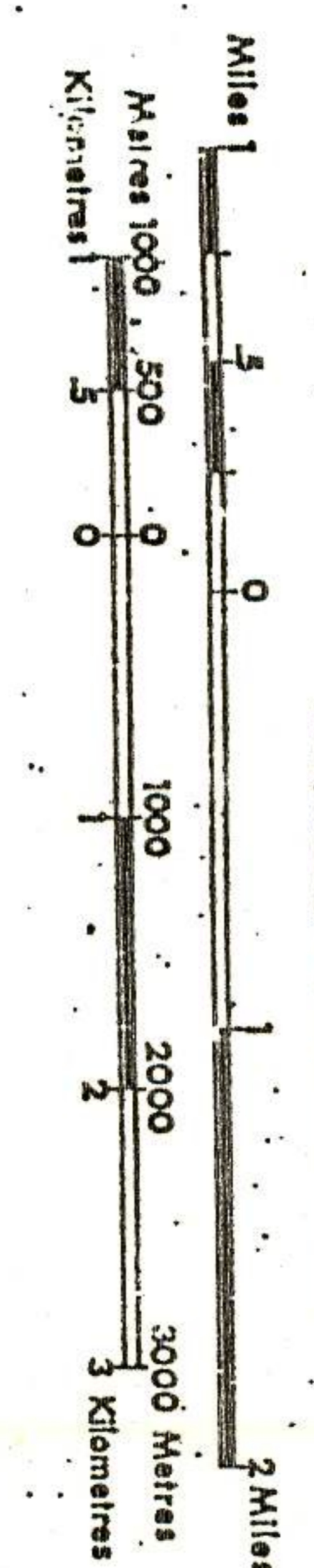
TO WEST SEE MAP 94 D/4 E

TO EAST SEE MAP 94 D/3 E



LEGEND

—	CROWN-GRANTED MINERAL CLAIM
—	PLACER MINING LEASE
—	PROSPECT CLAIM
—	VERIFIED LEGAL CORNER POST
—	LEGAL SURVEY
—	LEGAL CORNER POST - THE NUMBER GIVEN



UNLES VERIFIED OR SURVEYED, THE MAP POSITION OF A LEGAL CORNER POST IS BASED ON THE LOCATOR'S SKETCH FOR PLACEMENT. THIS INFORMATION APPLIES TO THE OFFICE OF THE MINING DIVISION. DATE OF MICROFILM: 87.09.11

THIS MAP IS PREPARED TO SERVE AS A GUIDE ONLY. POSITIONS OF UN-SURVEYED CLAIMS AND PLACER LEASES ARE PLOTTED FROM LOCATOR'S SKETCHES AND ARE NOT GUARANTEED. LETTERS C.G. INDICATE CLAIM IS CROWN-GRANTED. SYMBOL "C" INDICATES CLAIM HAS FORFEITED. MINISTRY OF ENERGY, MINES AND PETROLEUM RESOURCES

127°30' OMINECA MINING DIVISION

—	International Boundary	—	Bridge
—	Provincial Boundary	—	Tunnel
—	Mining Division Boundary	—	Power Transmission Line
—	City or Municipal Boundary	—	Pipeline
—	Indian Reservation	—	Stream... perennial
—	Surveyed Boundary	—	Stream... indefinite
—	Unsurveyed Boundary	—	Intermittent, dry
—	Mineral and Placer Reserve	—	Ditch, canal, flume
—	Ecological Reserve	—	Dam
—	Park Boundary	—	Rapid, Falls
—	Recreation Area Boundary	—	Boundary... swamp, flat, snow

DEPARTMENT OF MINES AND PETROLEUM RESOURCES
 JAKE CLAIMS
 VICTORIA B.C.
 SCALE 1/2 MILE = 1 INCH

This map is prepared only as a guide to the location of mineral claims and Placer Mining Leases as shown on the locator's sketches. For current or more specific information, application should be made to the Mining Division concerned.

861628

M9

JAKE