

ECO-TECH LABORATORIES LTD.

ASSAYING - ENVIRONMENTAL TESTING
10041 East Trans Canada Hwy., Kamloops, B.C. V2C 2J3 (604) 573-5700 Fax 573-4557

EASY CLAIMS

861529

June 29, 1988

CERTIFICATE OF ANALYSIS ETK 88-239
=====

Placer Dome Inc.
401, 1540 Pearson Place
KAMLOOPS, B.C.
V1S 1J9

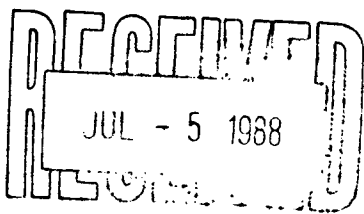
SAMPLE IDENTIFICATION: 4 rock samples received June 23, 1988

ET#	Description	Au (ppb)	Ag (ppm)	Cu (ppm)	Pb (ppm)	Zn (ppm)(%)
239 - 1	30951	30	.5	21	23	34
239 - 2	30952	20	1.1	408	10	55
239 - 3	30953	15	.6	49	8	36
239 - 4	30954	15	.6	83	11	>1000 .13

NOTE: > = MORE THAN

ECO-TECH LABORATORIES LTD.
Frank J. Pezzotti, A.Sc.T.
B.C. Certified Assayer

SC88/PLACER01



June 22nd -

Haden Lamminch Property : close to Trail, Castelgor -

Sample #1 Tag # 30951

Easy Mine dump. Vein is reportedly 4 m wide.
At mine portal - of incline shaft.

Disseminated pyrite 5-10% in quartz vein -
limonite -

Sample #2 Tag # 30952

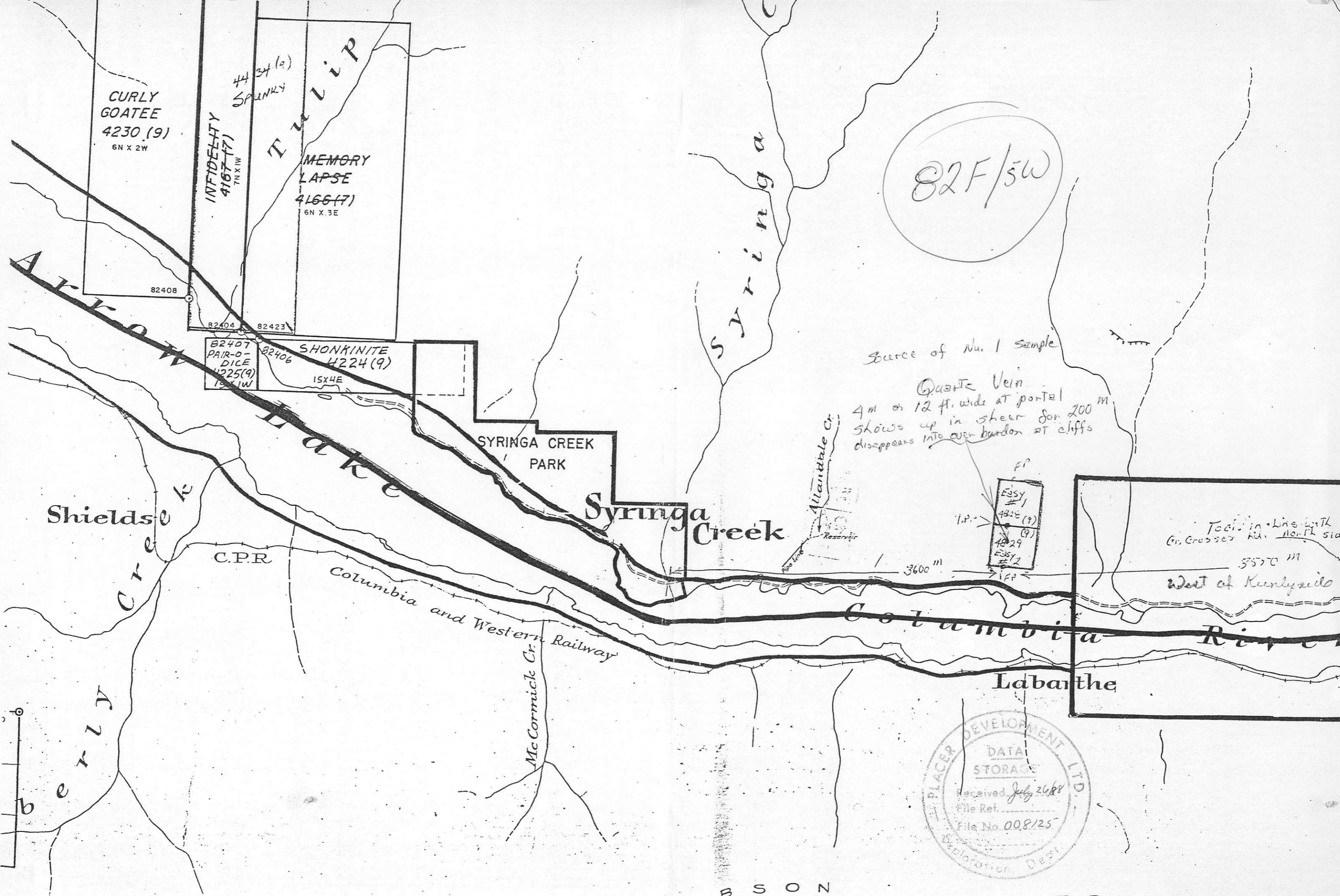
Golden vein II from pit on Side Hill
Rusty, fine grained - 5-10% pyrite, ~~Thin~~ Thin bands -
may be sedimentary? oxidized. Strongly - contains some
Abz veins -

Sample #3 Tag 30953.

Golden vein 5*6 line - To Egg ball -

Silicified, fine grained volcanic, Rusty -

Sample #4 Tag 30954. Where water met -
cut, + pit, black, aphanitic to fine grained
volcanic, (basalt?), 20% disseminated pyrite silicified -
chiefly in place - limonite - sericite bands -



CURLY GOATEE
4230 (9)
6N X 2W

INFIDELITY
4167 (7)
TN X IW

44 34 (a)
SPANKY

TULIP
MEMORY LAPSE
4166 (7)
6N X 3E

82408

82404

82423

82407
PAIR-O-DICE
4225 (9)
1S X IW

82406

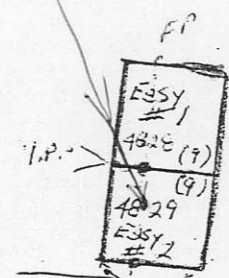
SHONKINITE
4224 (9)
1S X 4E

SYRINGA CREEK PARK

Syringa Creek

82F/5W

Source of No. 1 sample
Quartz Vein
4m or 12 ft. wide at portal
shows up in shear for 200 m.
disappears into over-burden at cliffs



Location line with dip
Cr. crosses rd. north side of
3550 m
West of Kurlygoat down

Shields Creek

C.P.R.

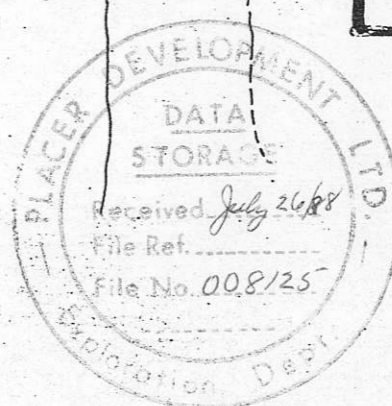
Columbia and Western Railway

Columbia River

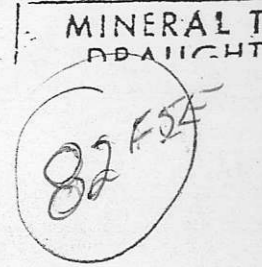
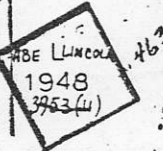
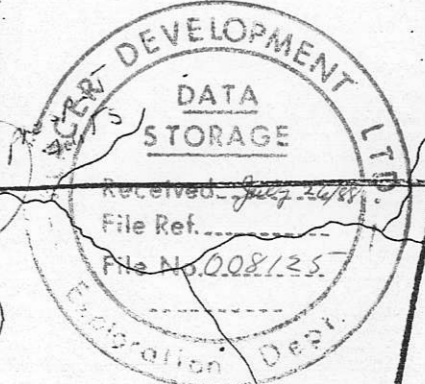
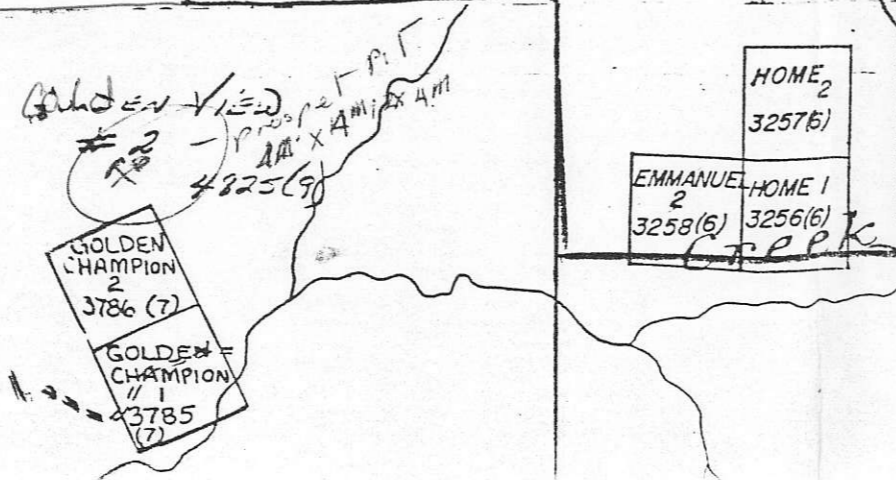
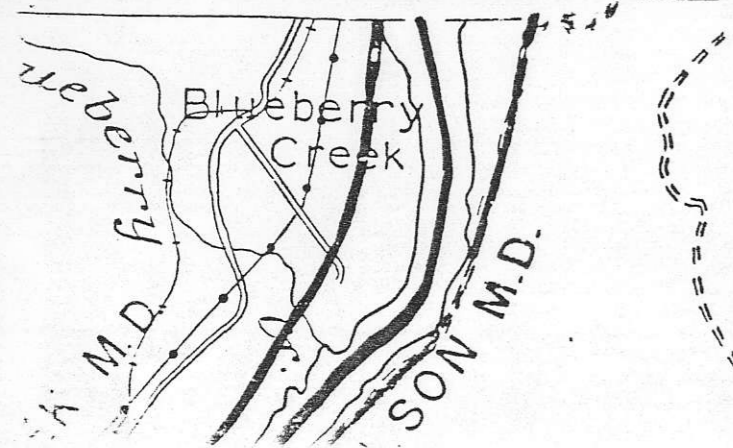
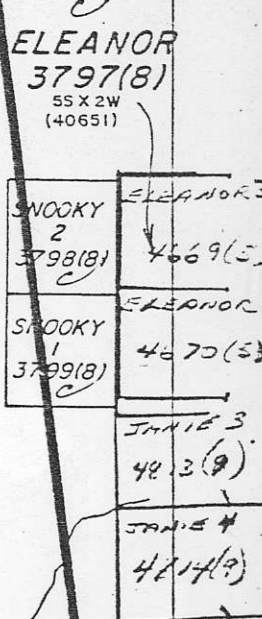
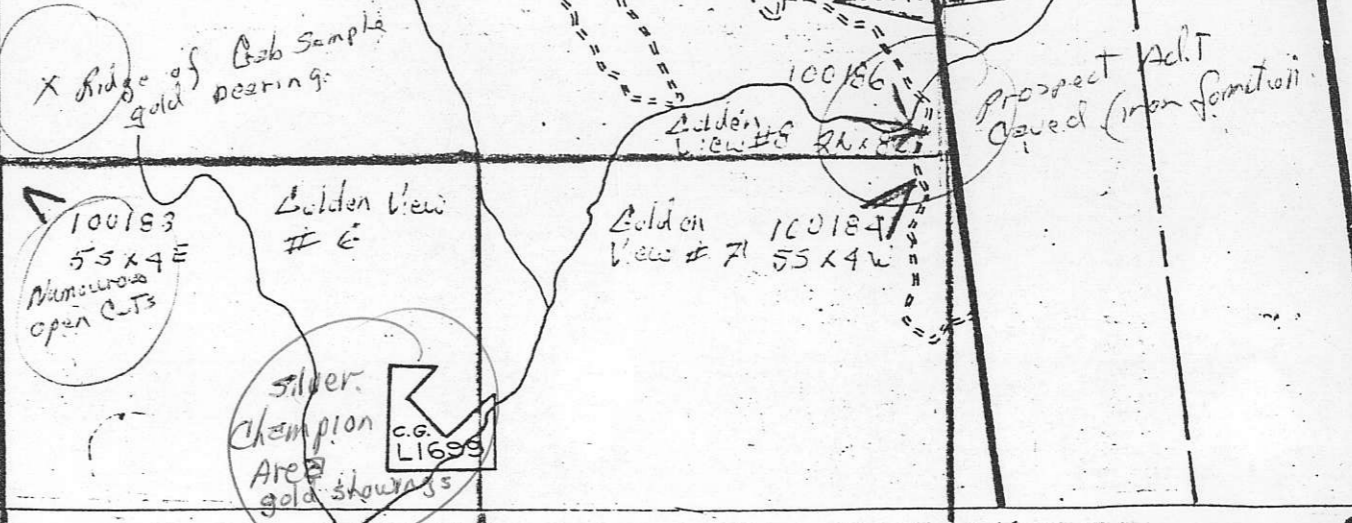
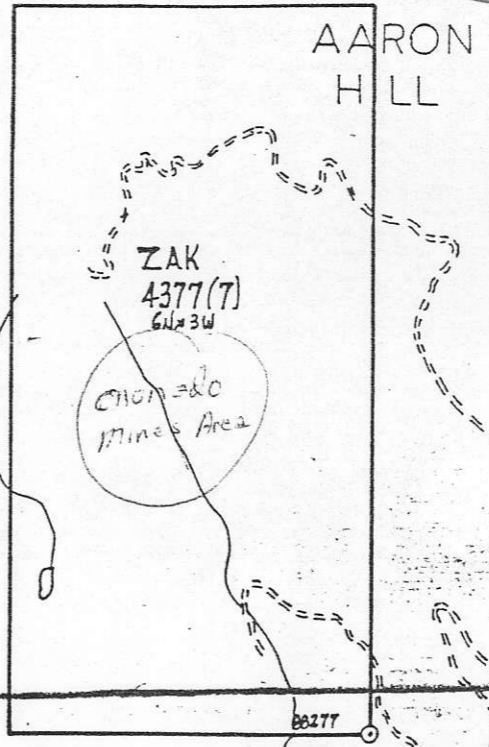
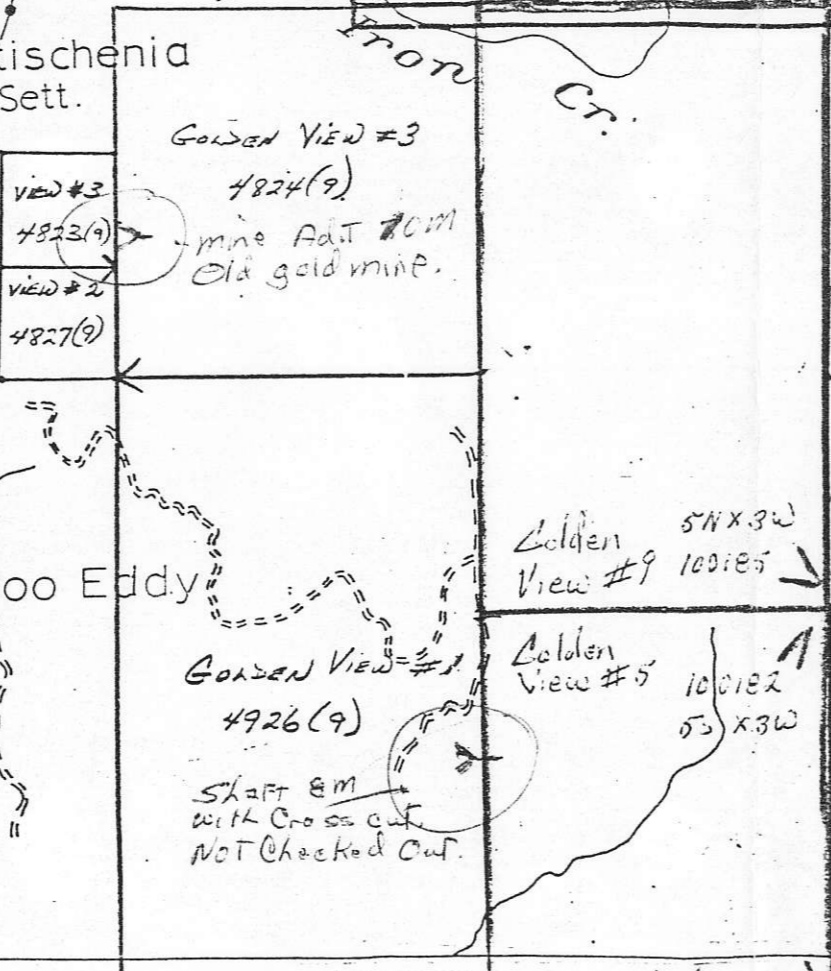
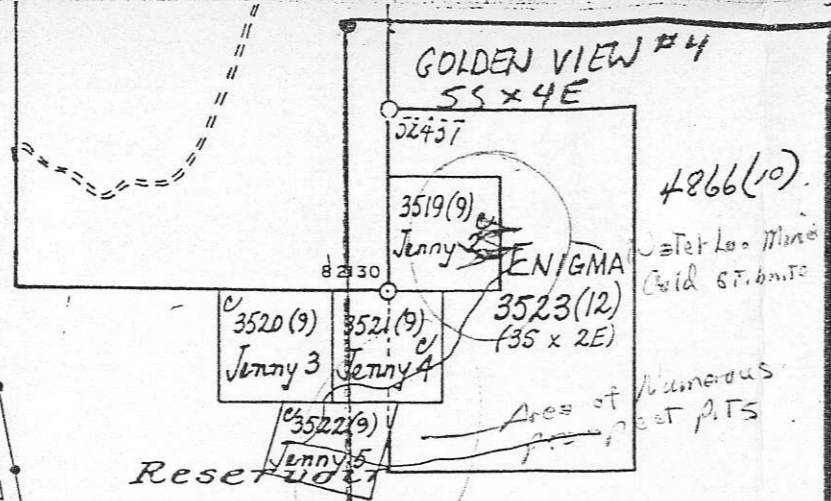
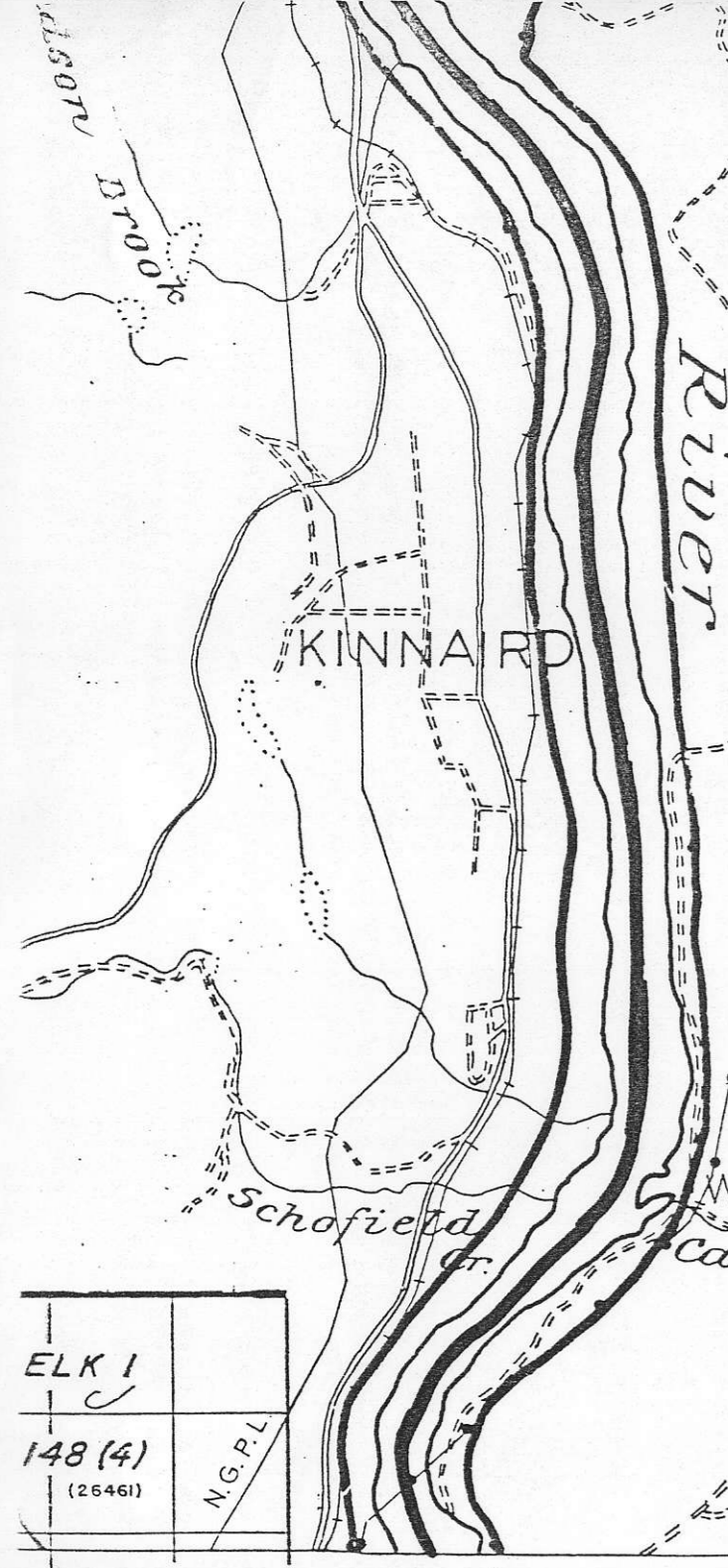
Labarthe

Beryl

McCormick Cr.



B S O Z



MINERAL T...
DRAUGHT...