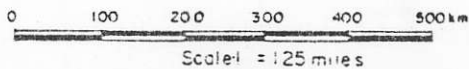




Figure 1



UNICORN RESOURCES LTD.	
GENERAL LOCATION MAP	
SKY GROUP	
SIMILKAMEEN MINING DIVISION, B.C.	
Project No. V III	By: G.H.
Scale: 1" = 125 mi.	Drawn: J.S.
Drawing No: 1	Date: Sept. 1983.
 MPH Consulting Limited	

861528

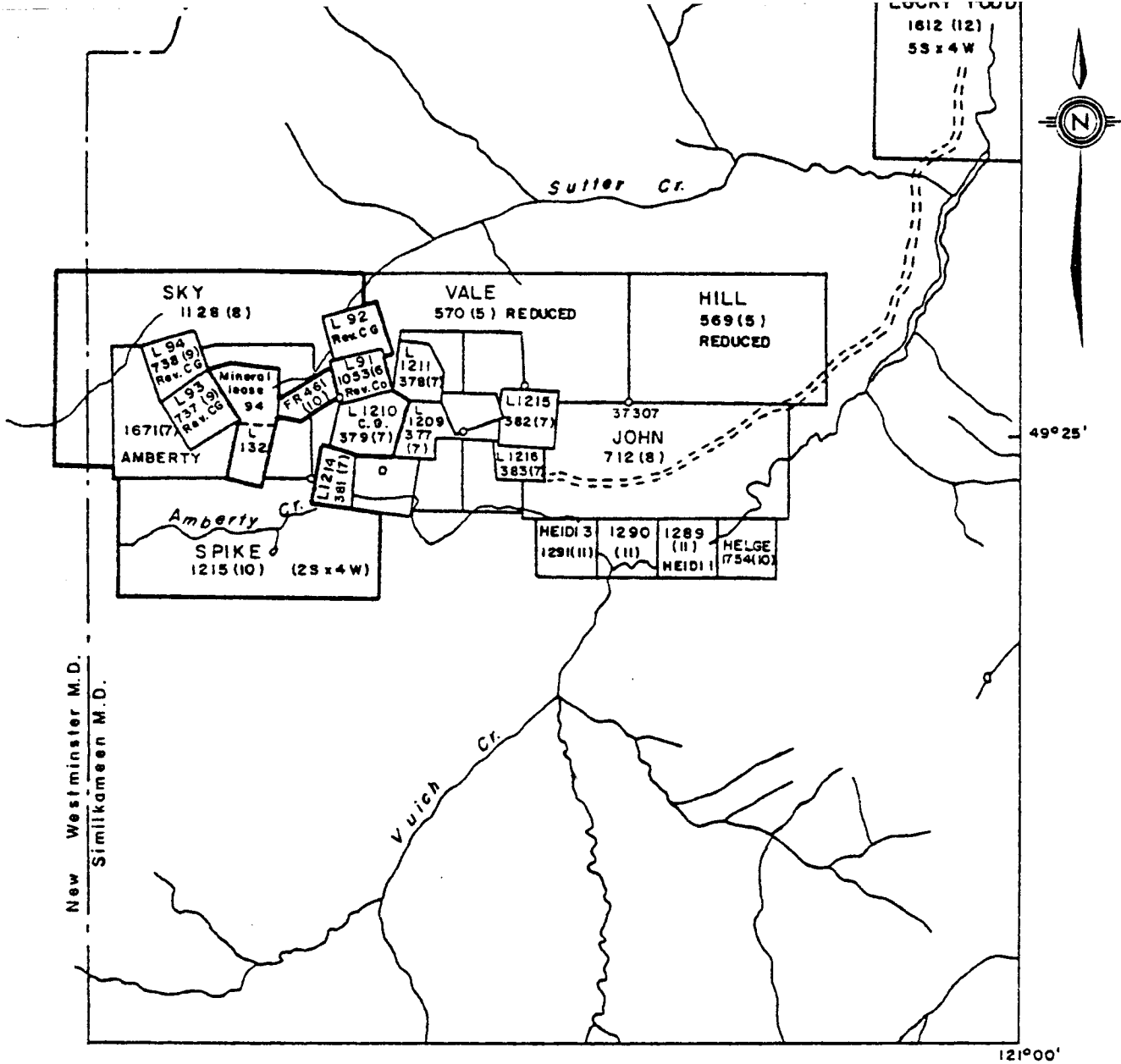



Figure 2

Reference: N.T.S. 92 H 9 E

UNICORN RESOURCES LTD.	
DETAILED LOCATION MAP	
SKY GROUP	
SIMILKAMEEN MINING DIVISION, B.C.	
Project No.	V 111
By	G. H.
Scale	1 : 50,000
Drawn	J. S.
Drawing No.	2
Date	Sept. 1983.


MPH Consulting Limited

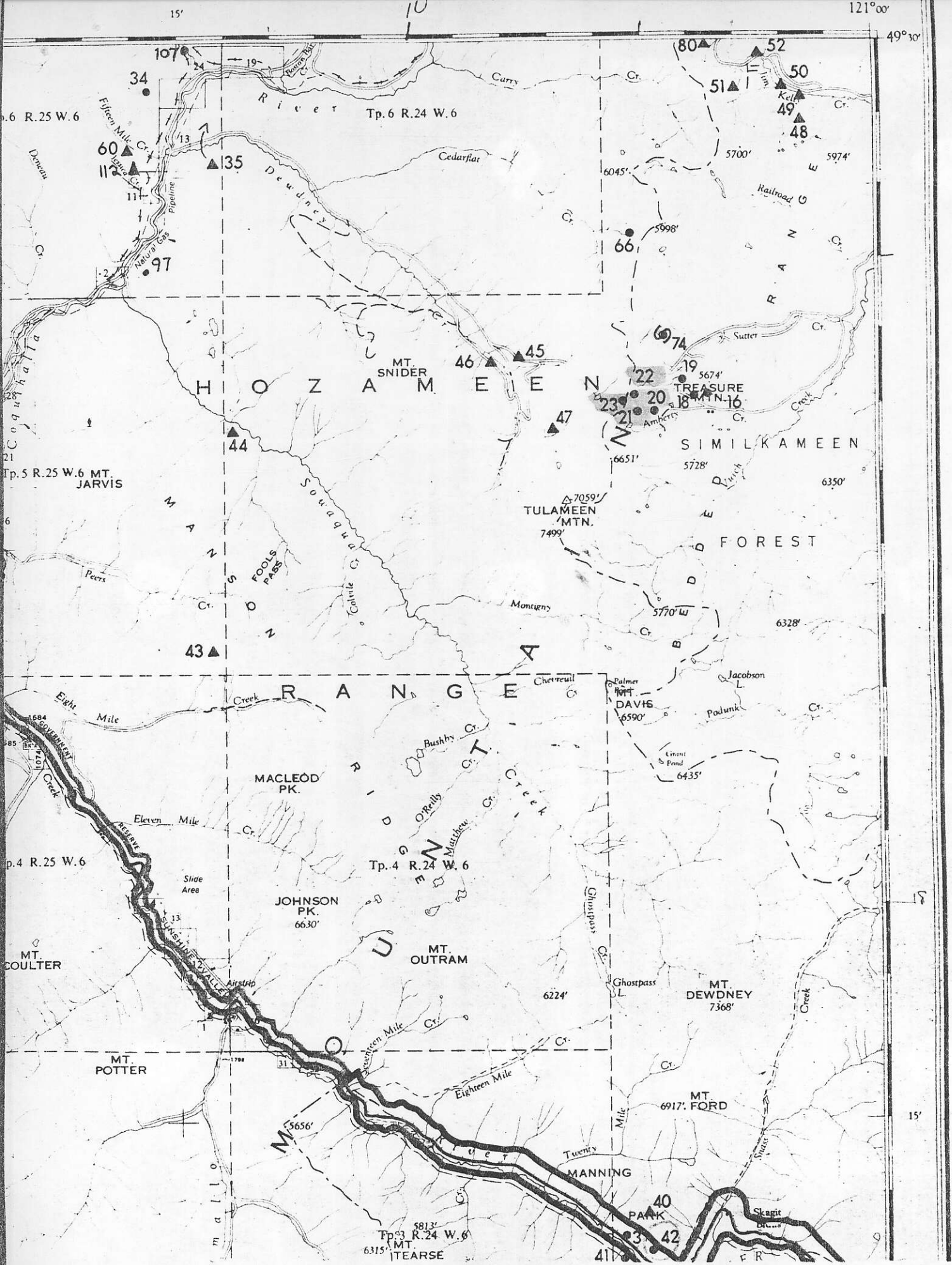


Figure 3

NO. 92H/SW-	NAME	PRODUCT (S)
1	A M	Cu, Ag, Mo
2	INVERMAY (NORWEGIAN)	Ag, Au, Pb, Zn, Cu
3	MAMMOTH	Ni, Cu, Zn, Mo, W, Ag
4	PRIDE OF EMORY	Ni, Cu
5	BEA	Cu, Ni
6	MURPHY	Ag, Cu, Au, Pb, W
7	LUCKY FOUR	Cu, Mo, Ag, Au
8	EMPRESS	Cu, Mo, Ag
9	POPKUM	Limestone
10	---	Mo
11	EUREKA - VICTORIA	Ag, Cu, Pb
12	D & J (DIAMOND; SILVER BELL)	Cu, Au, Ag
13	HARRISON (LUCKY JIM; SENECA)	Cu, Zn, Ag, Au, Pb, Ba
14	GOLD COIN (NORTH STAR)	Au, Ag, Cu, Pb, Zn
15	VALLEY VIEW (PF - MIDNIGHT)	Cu, Ag
16	SILVER CHIEF	Ag, Zn, Pb
17	BLUE CHIP (DIANE)	Au, Ag, Pb
18	EUREKA	Ag, Pb, Zn
19	SOUTHERN B FR.	Ag, Pb, Zn, Sb
20	BLUEBELL	Ag, Pb, Zn
21	QUEEN BESS	Ag, Pb, Zn
22	INDIANA	Ag, Pb, Zn
23	SUMMIT	Ag, Pb, Zn
24	IDEAL GOLD	Au, Ag
25	SILVER DAISY	Au, Ag, Cu, Pb, Zn
26	FAITH (DOLLY VARDEN; SILVER CHIEF)	Au, Ag, Cu, Pb, Zn
27	JULY	Au, Ag, Cu, Zn
28	SUNRISE	Zn, Au, Ag, Pb
29	SUNSET (SILENT FRIEND; HOPE)	Zn, Cu, Ag, Au, Pb
30	GRANDVIEW - INTERNATIONAL	Au, Ag, Cu, Pb
31	FAIRPLAY	Cu
32	SLEESE CREEK	Au
33	ANNA (CONTACT)	Au, Ag, Cu
34	EMANCIPATION	Au, Ag, Cu
35	MORNING (BROKEN HILL)	Au, Pb
36	AUFEAS (JUMBO)	Au, Ag, Cu, As
37	MARYJANE - ANNIE LOU	Mo
38	LAST CHANCE	Mo, Au, Ag, Cu, Ni
39	STAR 1	Au, Ag, Cu
40	FORKS	Ni
41	DEFIANCE	? Fe
42	B B (RAINBOW, HORSESHOE)	Au, Ag, Cu, Pb, Sb
43	MASTER ACE	Au, Ag, Cu, Mo
44	ST. PATRICK	Au
45	U. S. RAMBLER (ABE)	Au, Ag, Pb, Zn
46	BLACKJACK (ABE)	Au, Ag, Pb, Zn
47	HALL'S (TULA)	Au, Ag, Zn
48	GOLD MOUNTAIN	Au, Ag, Cu, Pb
49	SUPERIOR	Au, Ag, Cu, Pb
50	JOHN BULL	Au, Ag, Cu
51	MARSELLAISE	Au, Ag
52	SPOKANE - VANCOUVER	Au
53	QUEEN	Au, Ag
54	KING	Au
55	STEAMBOAT MOUNTAIN	Cu
56	YELLOW JACKET	?
57	ELLA	?
58	UTAH	Cu
59	DUNDEE - JOSEPHINE	Au, Ag
60	PACIFIC MINES (BRETT)	Au, Ag

61	IRON MOUNTAIN	Fe
62	SILVER KING	Au, Ag, Pb
63	MOUNTAIN GOAT (PIERCE MOUNTAIN)	Au, Ag
64	JUMBO	Ag, Au
65	MOUNT CHEAM 2	Cu
66	RAINY	Zn, Cu
67	CLOVER LEAF	Talc, Au, Ag, Ni, Cu
68	JON	Cu, Mo
69	LOV, STONEY, DS	Cu, Zn
70	ARANY, EMILE (RYE)	Cu, Pb, Zn, Ag, Au
71	NIK	Ni, Cu
72	ASCOT (FEW)	Cu, Zn
73	TA	Mo, Cu
74	MORNING STAR	Ag, Pb, Cu, Au
75	SKAGIT GIANT	Cu, Fe, Au
76	NORTH STAR	Ag, Pb, Zn
77	BILLICAN (CLEAR CREEK ?)	Ag, Pb, Zn, Cu, Sb, Au, Fe
78	ELK HORN	Ag, Pb, Zn
79	LUCKY FOUR - EAST ZONE	Cu
80	DAVID	Cu
81	NI	Ni
82	SWEDE	Cu, Ni
83	I A M	Cu, Pb, Zn
84	F A B	Cu, Zn
85	TAN	Cu, Zn
86	SKU	Cu
87	SF	Cu, Zn
88	CHILLWACK RIVER 1	Limestone
89	CHILLWACK RIVER 2	Limestone
90	MT. THURSTON	Ornamental stone
91	T O P	Pb, Cu, Zn
92	GEO	Au
93	STAR OF EMORY 3	Ni, Cu
94	BIGFOOT (SASQUATCH)	Cu, Ag, Pb, Zn
95	KU	Cu, Zn, Pb
96	ROBYN	Cu, Zn
97	STEVEN	JADE, TALC
98	FOST CK	Au
99	WAHLEACH CREEK	Asbestos
100	HILTON 1 & 2	Cu, Ni
101	GREENDROP LAKE	Pb, Zn, Ag
102	CHAPMAN & WORT	Cu, Ag, Pb, Zn
103	---	Au
104	VALLEY GRANITE QUARRY	GRANITE
105	AGASSIZ GRANITE	GRANITE
106	CHEAM MARL PRODUCTS	LIMESTONE
107	CAMP	Au
108	CHANNEL BAR	Au, Ag
109	E. R. ...	Au, Ag, Cu
110	BEE	Cu, U
111	CHILLWACK RIVER	Pb
112	COQUILLALLA	Pb
113	---	Ag, Au, Cu

TERTIARY
MIOCENE AND EARLIER

24 Granodiorite, quartz diorite

EARLY TERTIARY AND/OR LATE
CRETACEOUS

20 Foliated granodiorite, quartz diorite

CRETACEOUS
UPPER CRETACEOUS OR(?) OLDER

19 Quartz diorite

LOWER CRETACEOUS
KINGSVALE GROUP

18 Basalt, andesite, agglomerate, tuff

PASAYTEN GROUP

17 Sandstone, conglomerate, pelite

JACKASS MOUNTAIN GROUP

16 16a, sandstone, pelite and conglomerate, 16b, sandstone, minor conglomerate.

JURASSIC AND/OR LOWER CRETACEOUS

13 Foliated granodiorite

JURASSIC

UPPER JURASSIC
DEWDNEY CREEK GROUP

12 12a, sandstone, pelite;
12 b, tuff, pelite

LOWER AND MIDDLE JURASSIC
LADNER GROUP

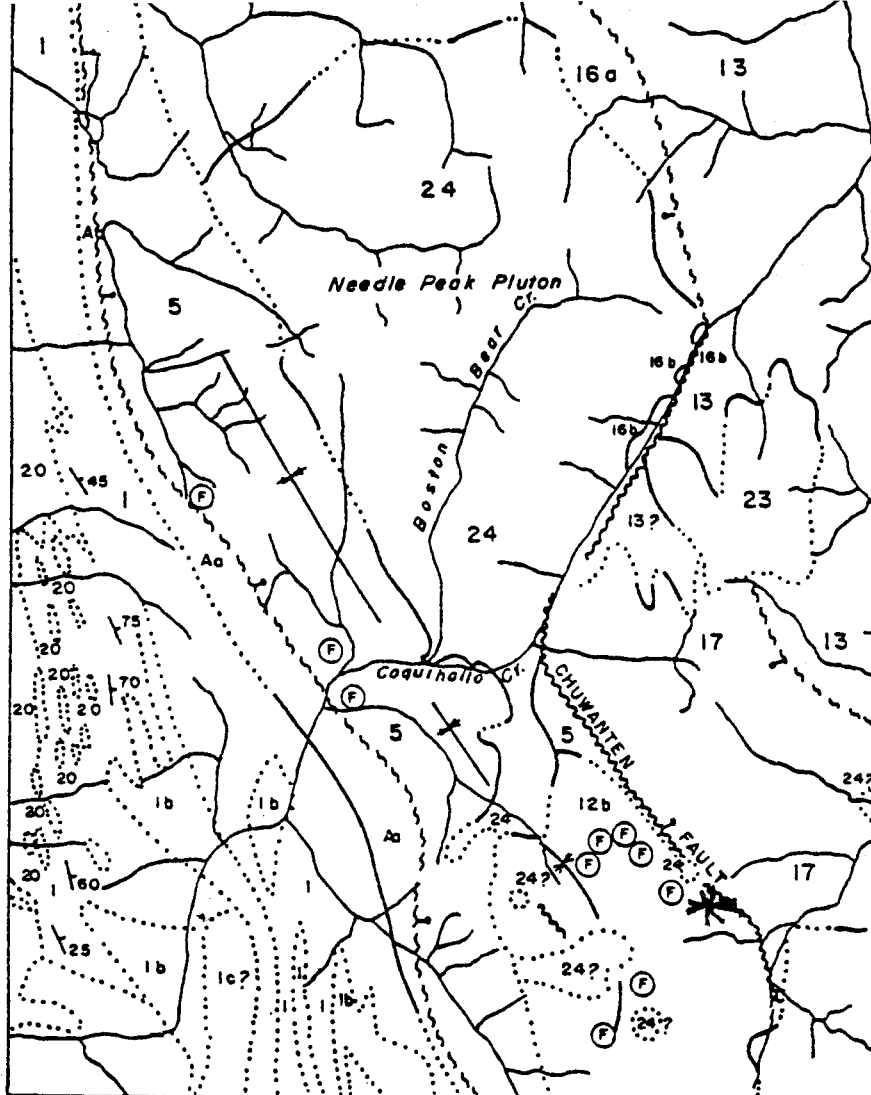
5 Pelite, volcanic sandstone

DEVONIAN(?), CARBONIFEROUS(?) AND PERMIAN(?)
HOZAMEEN GROUP

1 1, pelite, chert, basic volcanic rock, minor limestone;
1a, chert, basic volcanic rock, 1b, basic volcanic rock;
1c, chert, pelite; 1d, basic volcanic rock, chert, pelite;
1e, limestone.

ULTRAMAFIC ROCK

A Aa, serpentinite, serpentized peridotite, includes some
Upper Paleozoic volcanic rocks in broad belt northeast
of Hope; Ab, pyroxenite; Ac, hornblendite.



Reference G.S.C. Map 12-1969

UNICORN RESOURCES LTD.

GENERAL GEOLOGY MAP
SKY GROUP

SIMILKAMEEN MINING DIVISION, B.C.

Project No.	V-111	By	S. H.
Scale	1:250,000	Drawn	J. S.
Drawing No.	3	Date	Sept. 1982



MPH Consulting Limited

Figure 4