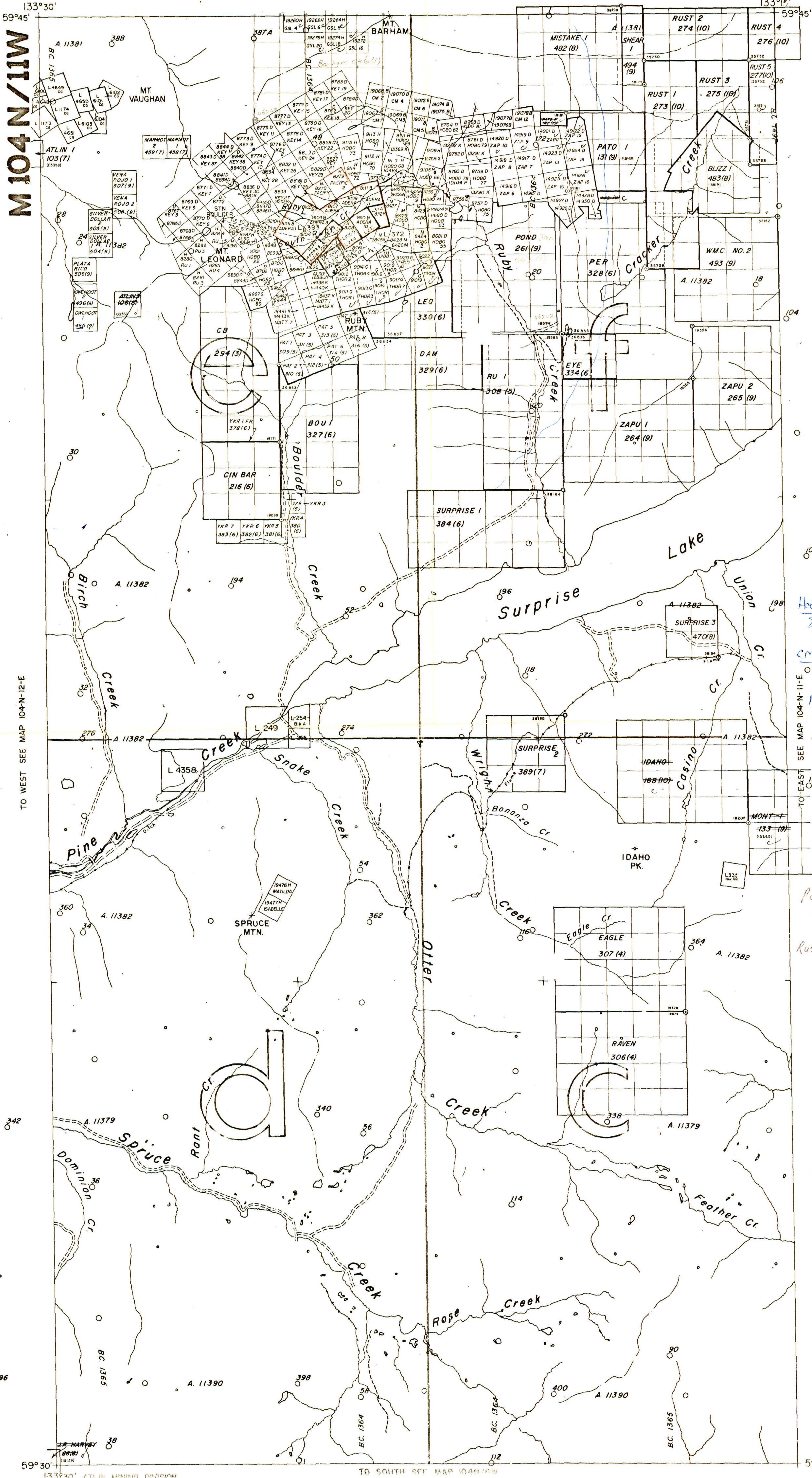


TO NORTH SEE MAP 104-N-14-W



*Pacific 112 - Adawac
Exp July 25/84*

*Adera - Adawac
Exp Feb 14/84*

*Lee - Comasco
Exp June 8/79*

*Key 13 - Adawac
Exp April 84*

*Key #17 - Adawac
Exp - April 84*

*Mt. Leonard 112 - R.E. Coe
Exp July 11/79*

*PAT 178 - M. Cloutier
Exp April 28/79*

*Bill of Sale cont. Sp. 1
To Yukon Revenue M. Mac, 1981*

*Ruby - Adawac
Exp July 26/84*

*Thon #2 - Adera Ross Group
Exp June 26/83*

*Zap - Adawac
Exp April 9/83*

*Hobo - Adera
Exp July 10/84*

*CM - Adawac
Feb 1/84*

*MISTAKE #1 -
D. Jennings
Union Oil
Exp July 16/78*

*Yukon Revenue
M. Mac
Exp March 11/79*

Land Exp Sept 20/79

*Per. 8/6/79
Comasco*

*RUST 1
5/10/1980
T.S. Liske*

LEGEND

- BROWN - GRANTED MINERAL CLAIM
- GREEN - VERIFIED MINERAL CLAIM
- RED - FORFEITED MINERAL CLAIM
- BLACK - LEGAL SURVEY
- LEGAL CORNER POST
- TAG NUMBER CLAIM

Miles 1 2 3
Kilometres 500 1000 1500 2000 3000

UNLESS VERIFIED OR SURVEYED, THE MAP POSITION OF A LEGAL CORNER POST IS BASED ON THE LOCATOR'S SKETCH FOR FULL-TIER INFORMATION APPLY TO THE OFFICE OF THE MINING DIVISION, CONCORDIA.

DATE OF MICROFILM: 78-10-26

BRITISH COLUMBIA GEOLOGICAL SURVEY

inches 1 2
centimetres 1 2 3 4 5

This reference scale bar has been added to the original image. It will scale at the same rate as the image, therefore it can be used as a reference for the original size.

861508

M1

TO SOUTH SEE MAP 104-N-14-W