

861491

PROPERTY SUMMARY - NAT CLAIMS

Land

16 two-post claims

Ownership

Gordon Richards of Ruanco Enterprises Ltd.
5700 Forsythe Cres.
Richmond, B.C., V7C 2C3
(604) 270-6862

Location and Access

Approximately 175 km north of Prince George; in N.T.S 930/5, on the west side of the Nation River. Access is from Mackenzie located on the east side of Williston lake. A ferry can be taken from Mackenzie that connects to logging roads on the west side of the lake.

Target Type

Gold; associated with pyrite and silicification in a major fault structure.

Geological Setting

Slide Mountain Group argillites and phyllites of Mississippian age. A 50 m wide, altered and mineralized, northwest-trending fault zone is coincidental with an elongated (NW) magnetic low which is located on the northeast side of a magnetic high. Some ultramafic rocks occur within the fault. There are known "placer" gold and platinum occurrences in the region.

Previous Work (Others)

1. Prospecting and claim staking by Ruanco Enterprises. Discovery of the altered and pyritized fault zone in outcrop. Rock samples from the zone are anomalous for arsenic (up to 460 ppm) and some contain detectable gold up to 0.14 ppm. A silt sample from an east-west drainage across the northern projection of the fault returned 0.17 ppm Au.

PDI's Involvement

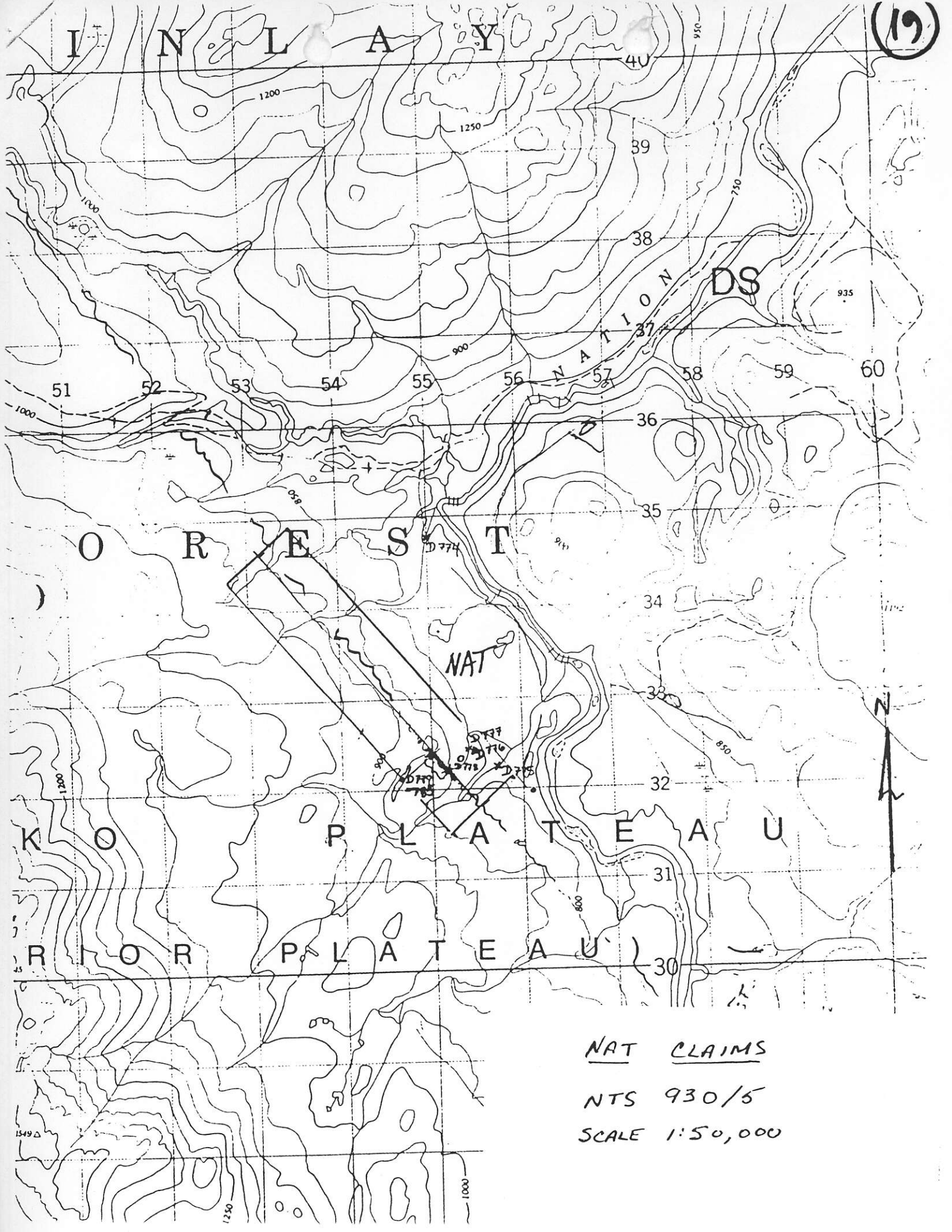
1. "First right of refusal" from Ruanco on the Nat Claims for providing analytical services.

Proposed Work

1. Establish a grid perpendicular to the fault strike; 200 m line spacing.
2. Systematic ground VLF-EM and magnetics to trace the fault.
3. Soil and rock chip sampling to test for mineralization along the fault.

M.B. Gareau

MBG/lea
12.30.87



NAT CLAIMS
 NTS 930/5
 SCALE 1:50,000