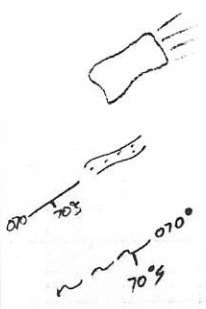


LEGEND.



Trench outline

Vein; strike & dip

Fault; strike & dip.

• A2(20

Survey Picket (elevation)



Diorite



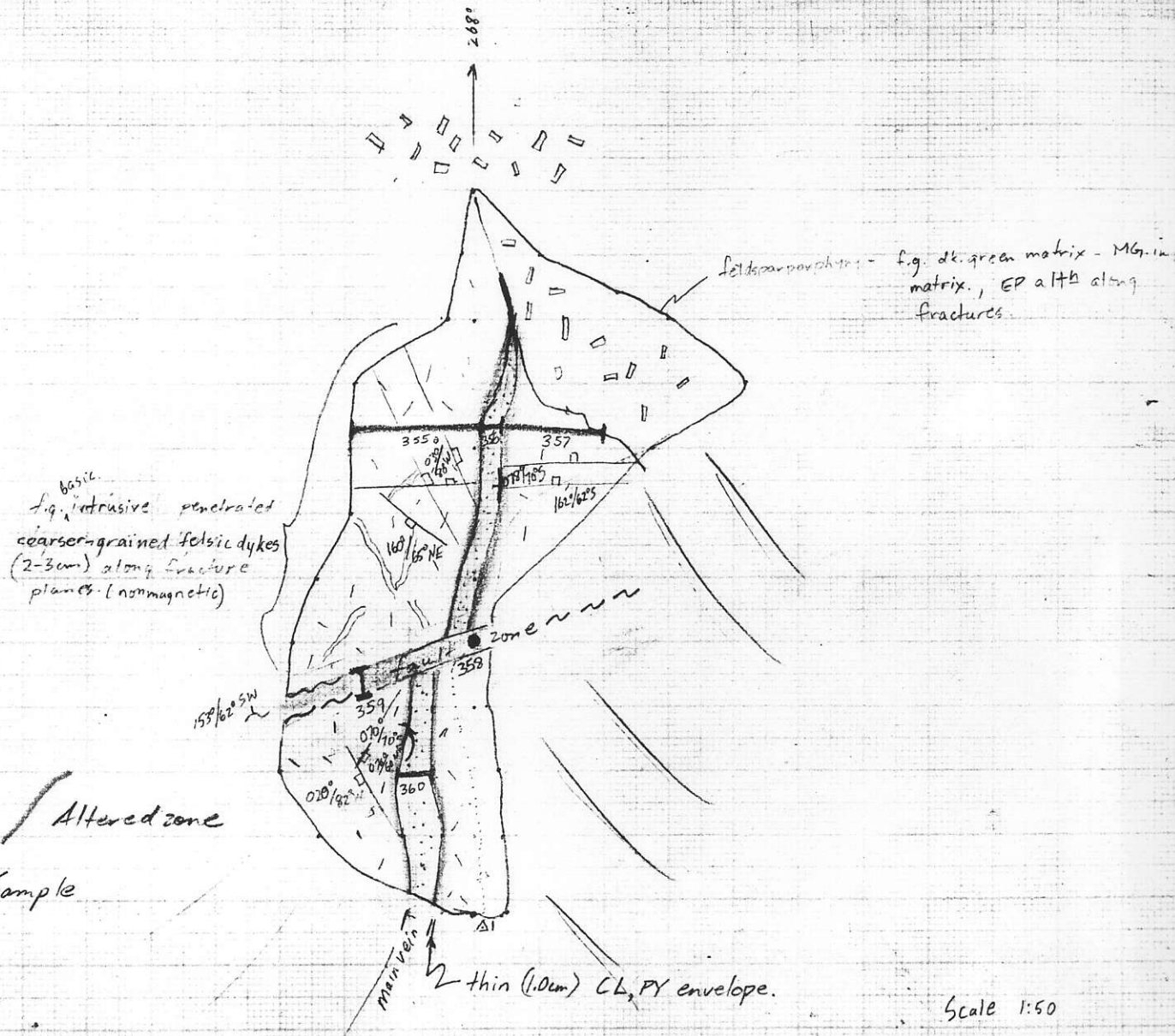
Feldspar porphyry

Scale 1:250

WARATAH PROJECT
GOLDEN ARROW VEIN
LOCATION MAP
TRENCHES 19,20,21

861384

Sept/87
DAC.



LEGEND

- Vein
- Altered zone
- Chip Sample
- Grab

SAMPLE NO.	SAMPLE WIDTH	T WIDTH ZONE	Au ^{oz} /ton
15355	1.20 m	1.20 m	0.008
56	0.23 m	0.23	4.431
57	0.87 m	0.87	0.036
58	Grab	0.30	0.032
59	0.36 m	0.36	0.012
15360	0.25 m	0.25	0.194

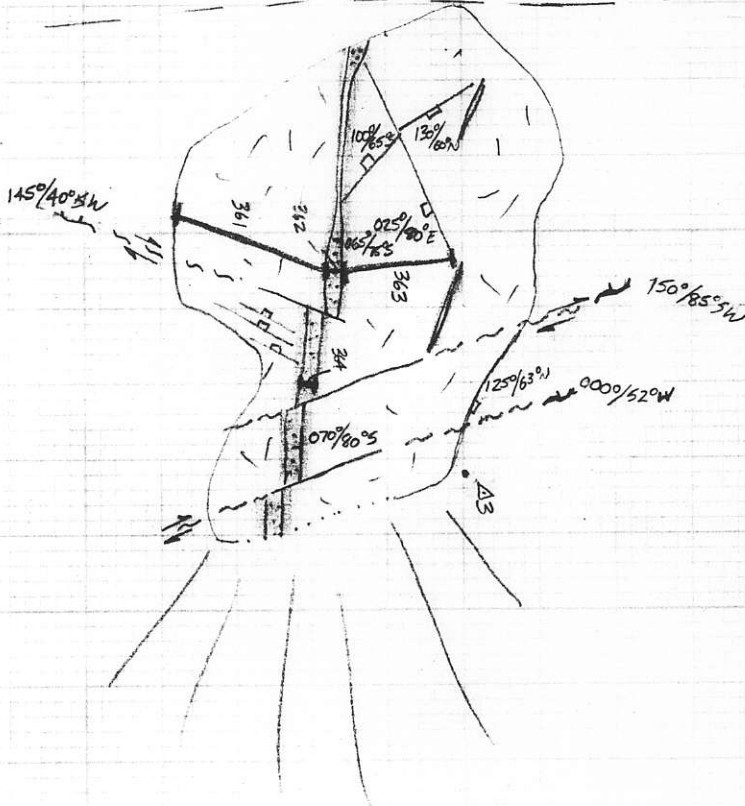
WARATAH PROJECT
 GOLDEN ARROW VEIN
 INCLINED (-35°) VIEW
 TR # 19

Sept. 1987
 DAC

• Δ2

VIEW FACING. 259°

EDGE OF BLUFF



LEGEND

Vein

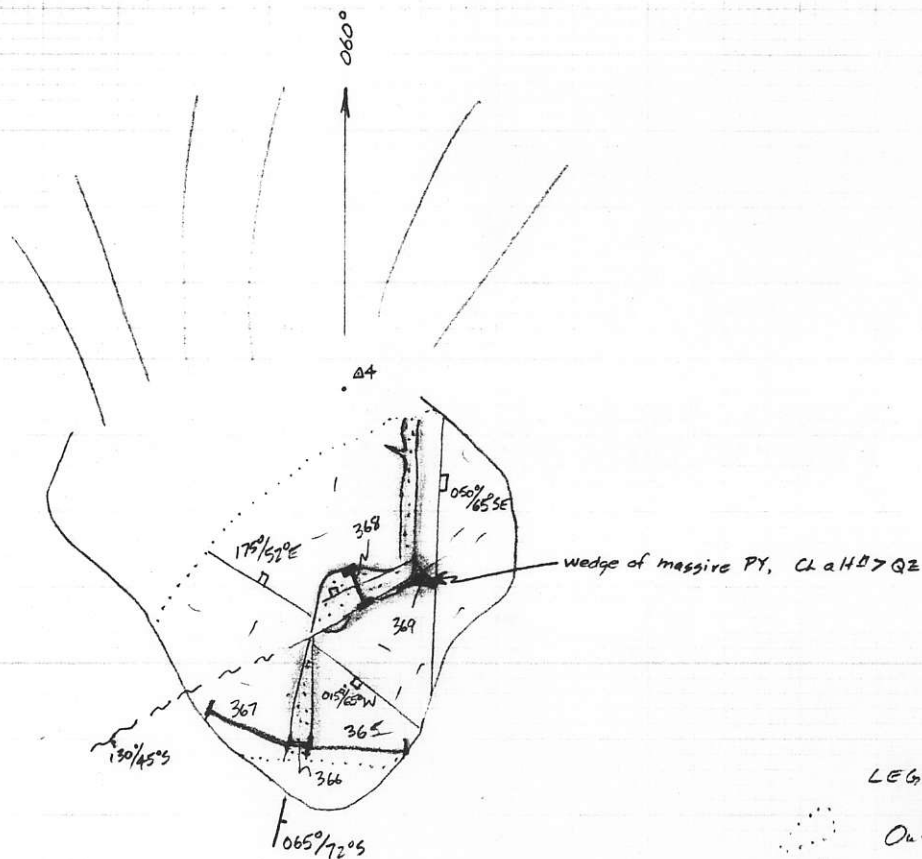
Altered zone

Scale 1:50

SAMPLE NO.	S. WIDTH	T. WIDTH ZONE	Area $\frac{m^2}{ton}$
15361	1.20 m	1.20 m	2.005
62	0.10 m	0.10 m	0.106
63	0.95 m	0.95 m	0.006
15364	0.15 m	0.15 m	2.335

WARATAH PROJECT
 GOLDEN ARROW VEIN
 INCLINED (-50°) VIEW
 TR# 20

SEPT/87 DAC.



LEGEND

- Outcrop Limit
- Vein
- Altered zone
- Fracture
- Chip Sample
- Grab Sample

Scale 1:50

SAMPLE NO.	S. WIDTH	T. WIDTH	ZONE	Au oz/ton
15365	0.81m	0.81m		0.024
66	0.13m	0.13m		0.986
67	0.60m	0.60m		0.018
68	0.33m	0.33m		1.554
15369	Grab	?		0.248

WARATAH PROJECT
 GOLDEN ARROW VEIN
 PLAN VIEW
 TRENCH # 21

Sept./87 DAC.