

Property of Joyce Clouston

A.B.C.
LTD.

A.B.C.
LTD.

A.B.C.
LTD.

861320

COPPER PASS MINES LTD.

PHOTOGRAPHS

OF

STIKINE PLATEAU PROPERTY

BRITISH COLUMBIA

GEOSURVEY EXPLORATION LIMITED
GEOLOGY - GEOPHYSICS - ECONOMICS

Photographs taken by J. C. Kurdryk

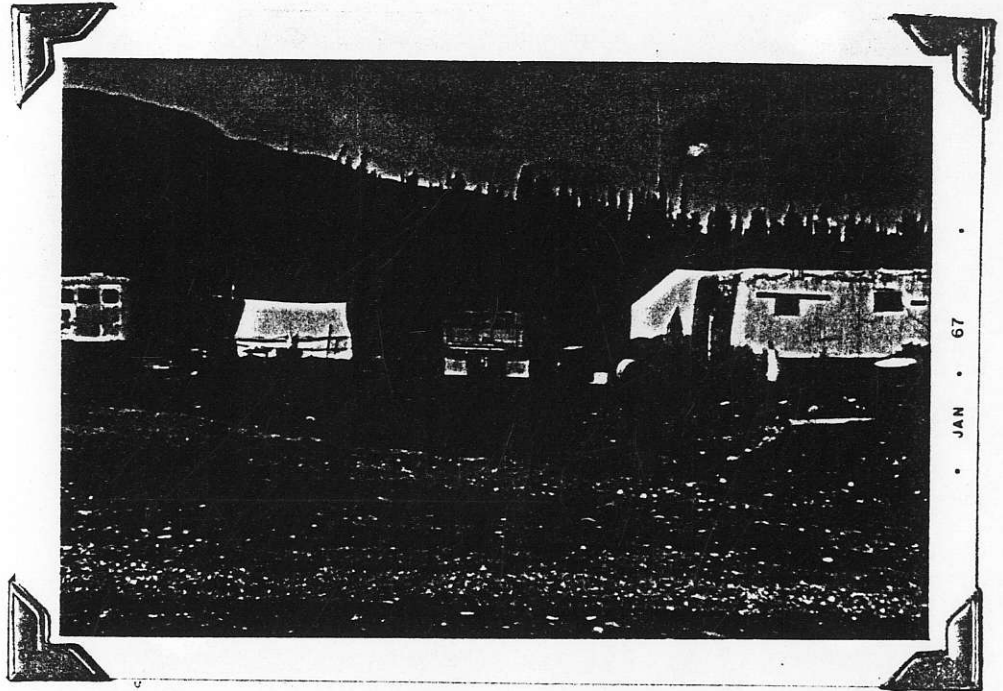


Figure 1.

Camp of Copper Pass Mines Limited along Stewart-Cassiar highway at Upper Gnat Lake, British Columbia.

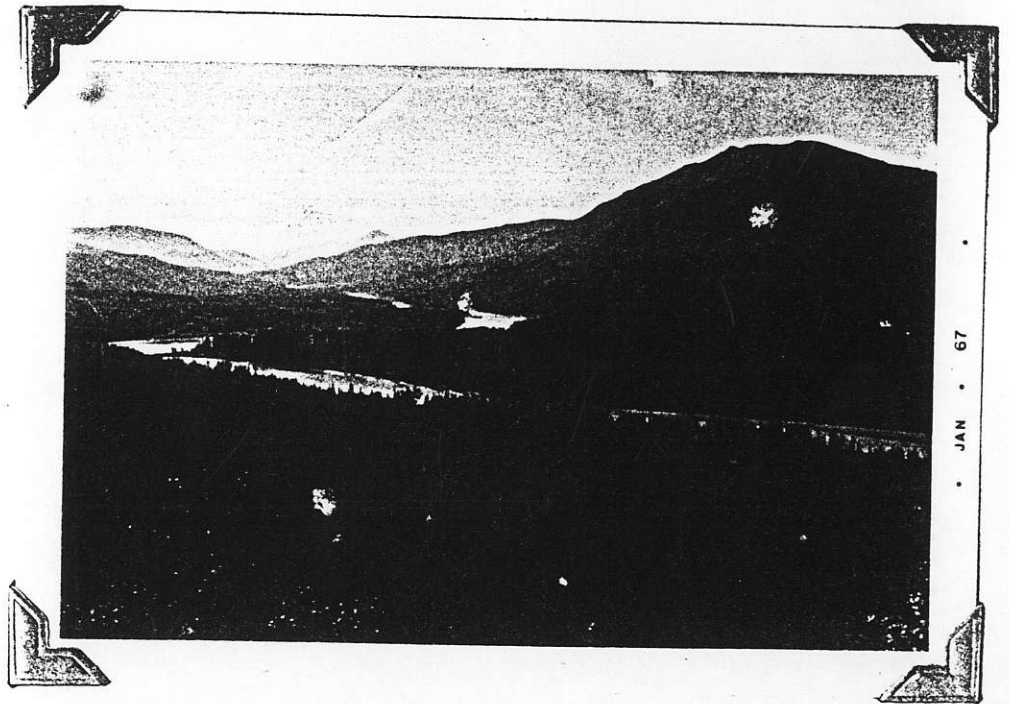


Figure 2.

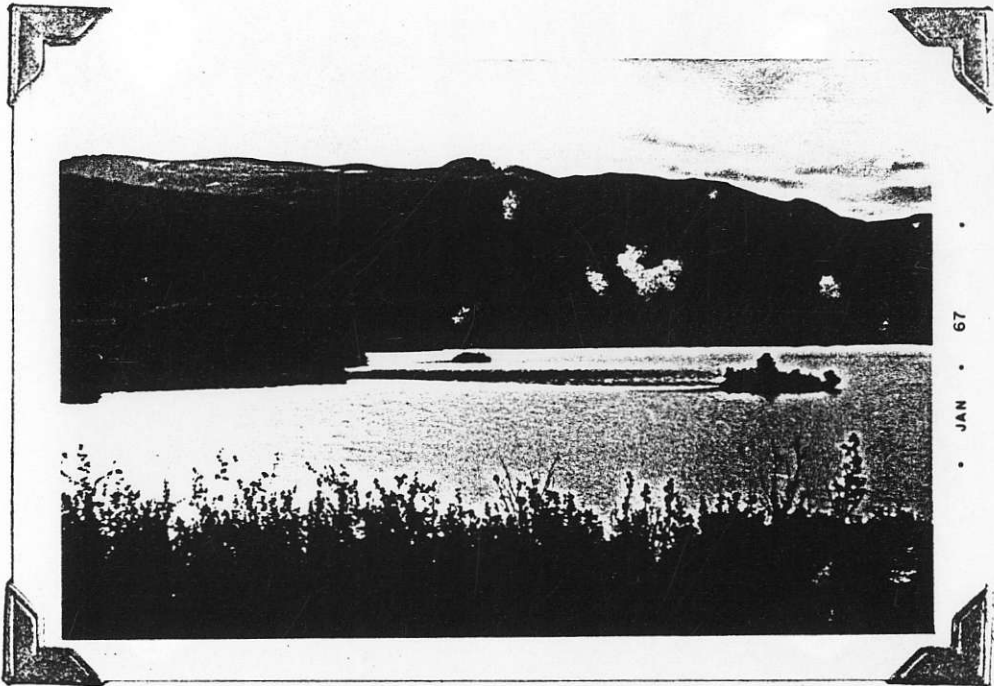
View of Stikine River east of ferry. Approximately 15 miles south of Copper Pass Mines Ltd. Property.

A.B.C.
LTD.

A.B.C.
LTD.

A.B.C.
LTD.

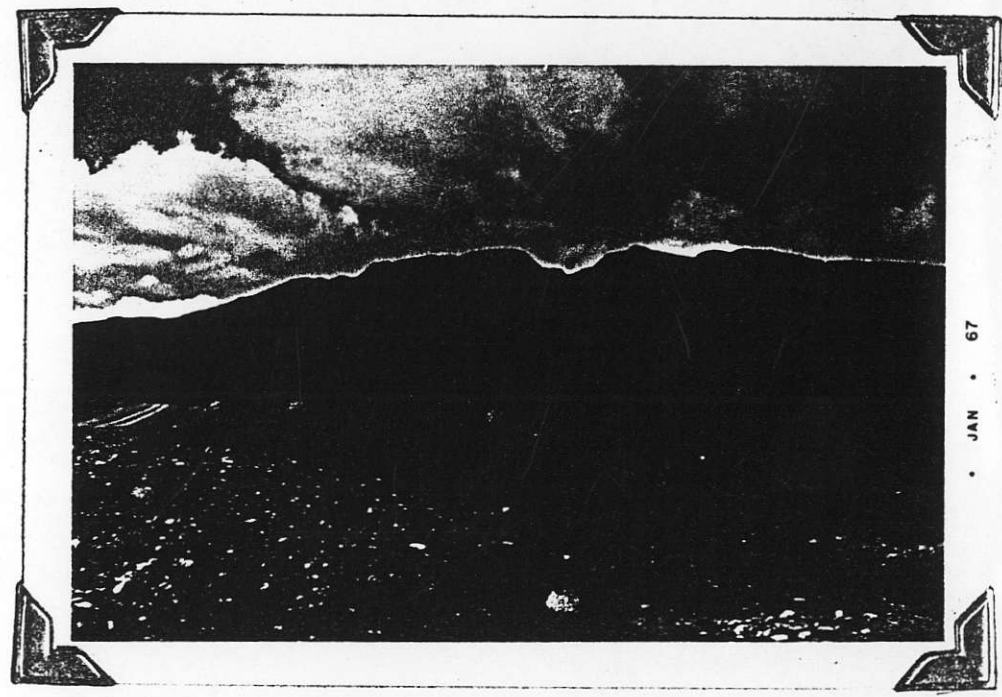
103
113



• JAN • 67

Figure 3.

Upper Gnat Lake at Sunset; looking southeast from Camp.



• JAN • 67

Figure 4.

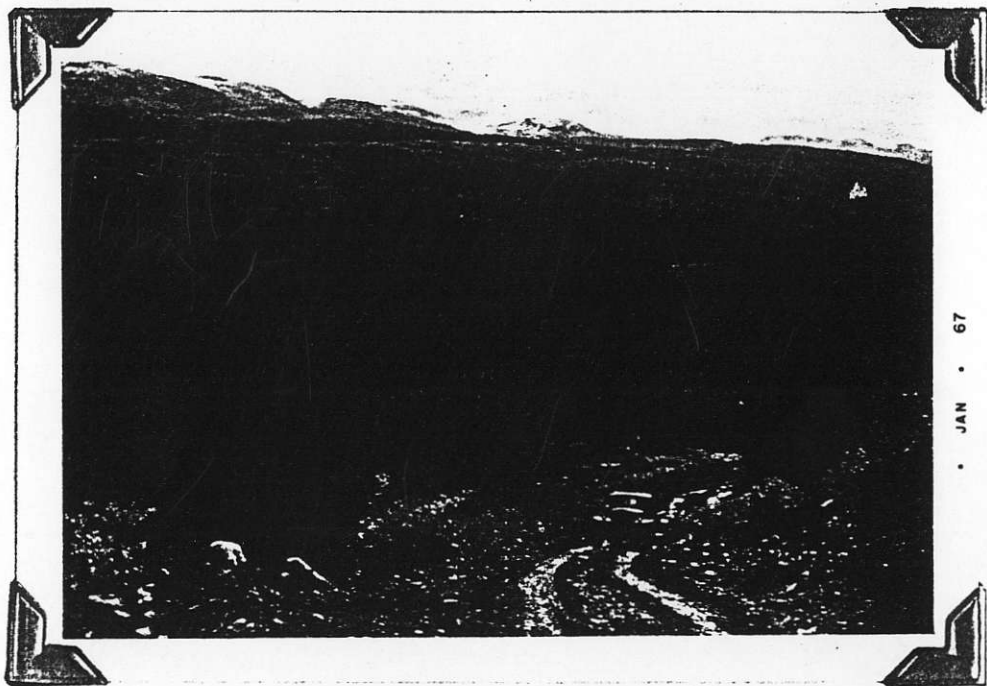
Copper Pass Mines Ltd. property on east flank of mountain; photo taken looking southwest from camp. Note north-south trending depressions, probably representing fault zones.



• JAN • 67

Figure 5.

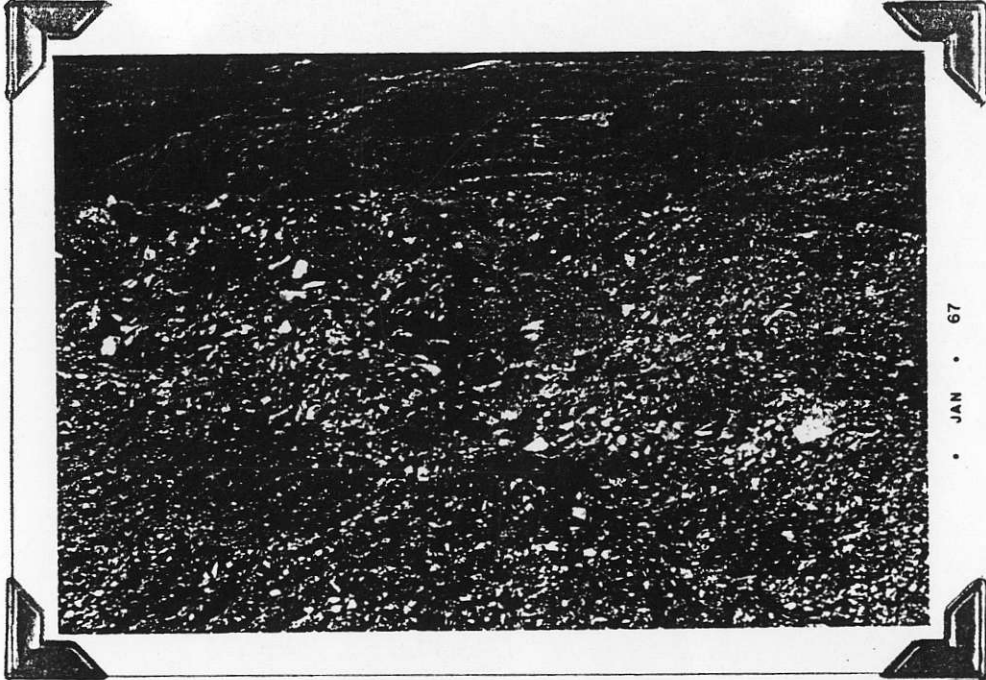
Portion of tote road with Upper Gnat Lake in the background; looking northeast.



• JAN • 67

Figure 6.

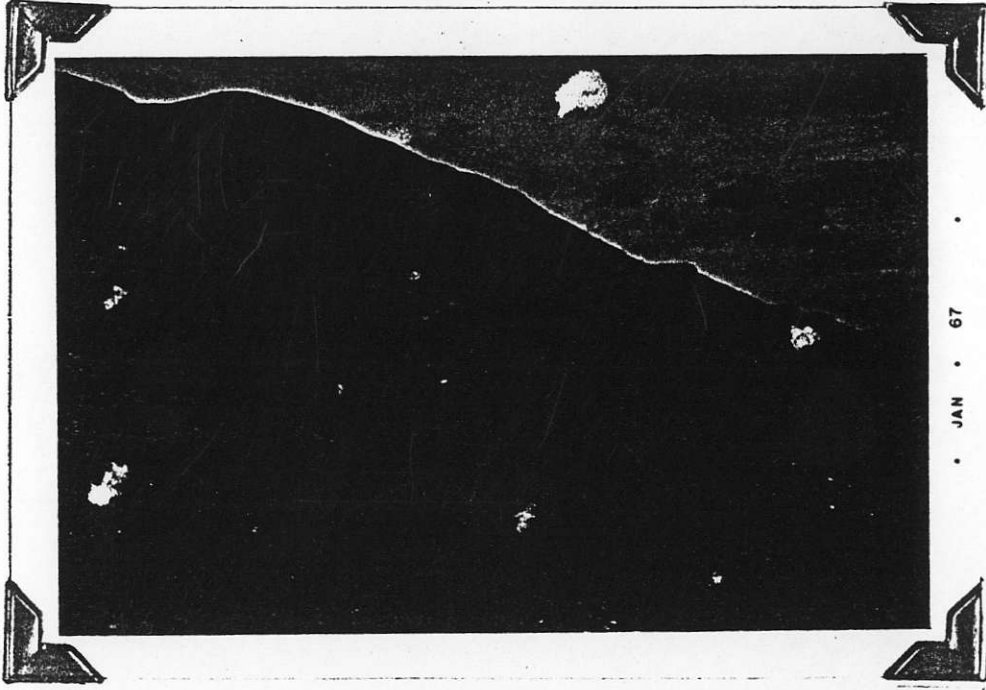
View of tote road connecting property with Stewart-Cassiar highway; looking southeast.



• JAN • 67

Figure 7.

Trench No. 1 (1.03% Cu. over 41 feet); photo looking west.



• JAN • 67

S

Figure 8.

Trench No. 7 in vicinity of showings; photo looking northwest from south end of the trench; south end of I.P. anomaly begins the the right-centre part of the photo and extends past the hills of metasediments in the far right of the photo.

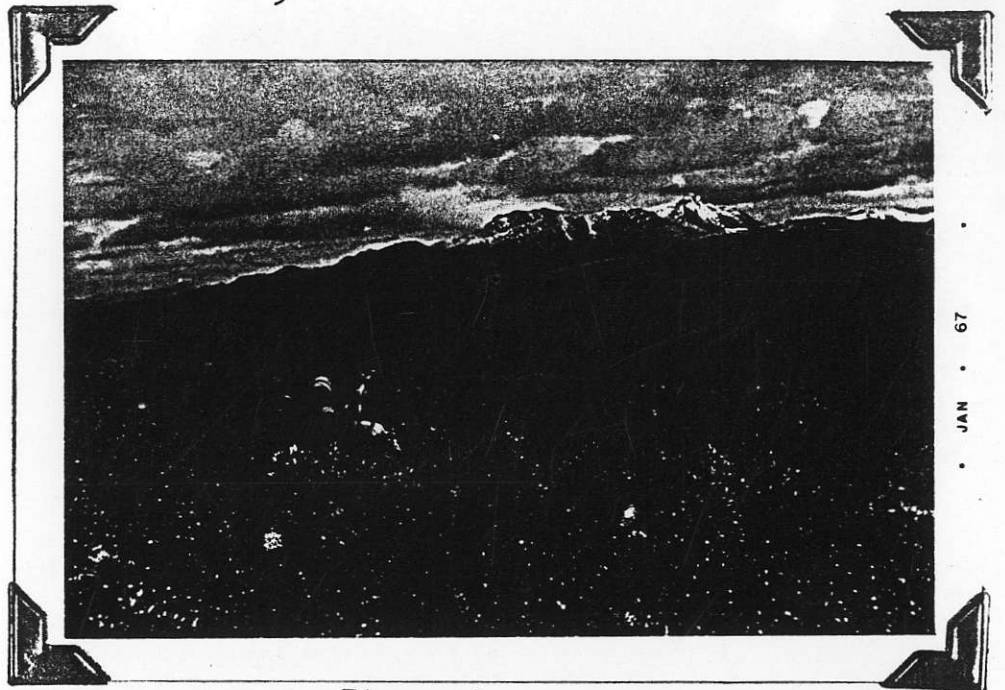


Figure 9.

Geochemical soil sampling on property; Upper Gnat Lake in the background; looking northeast.

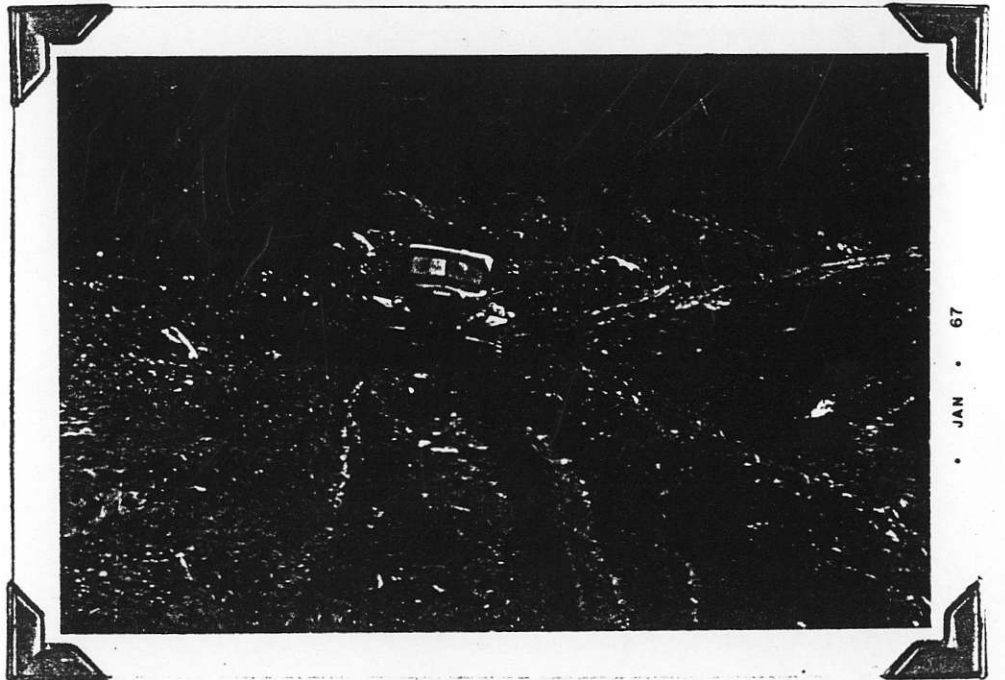
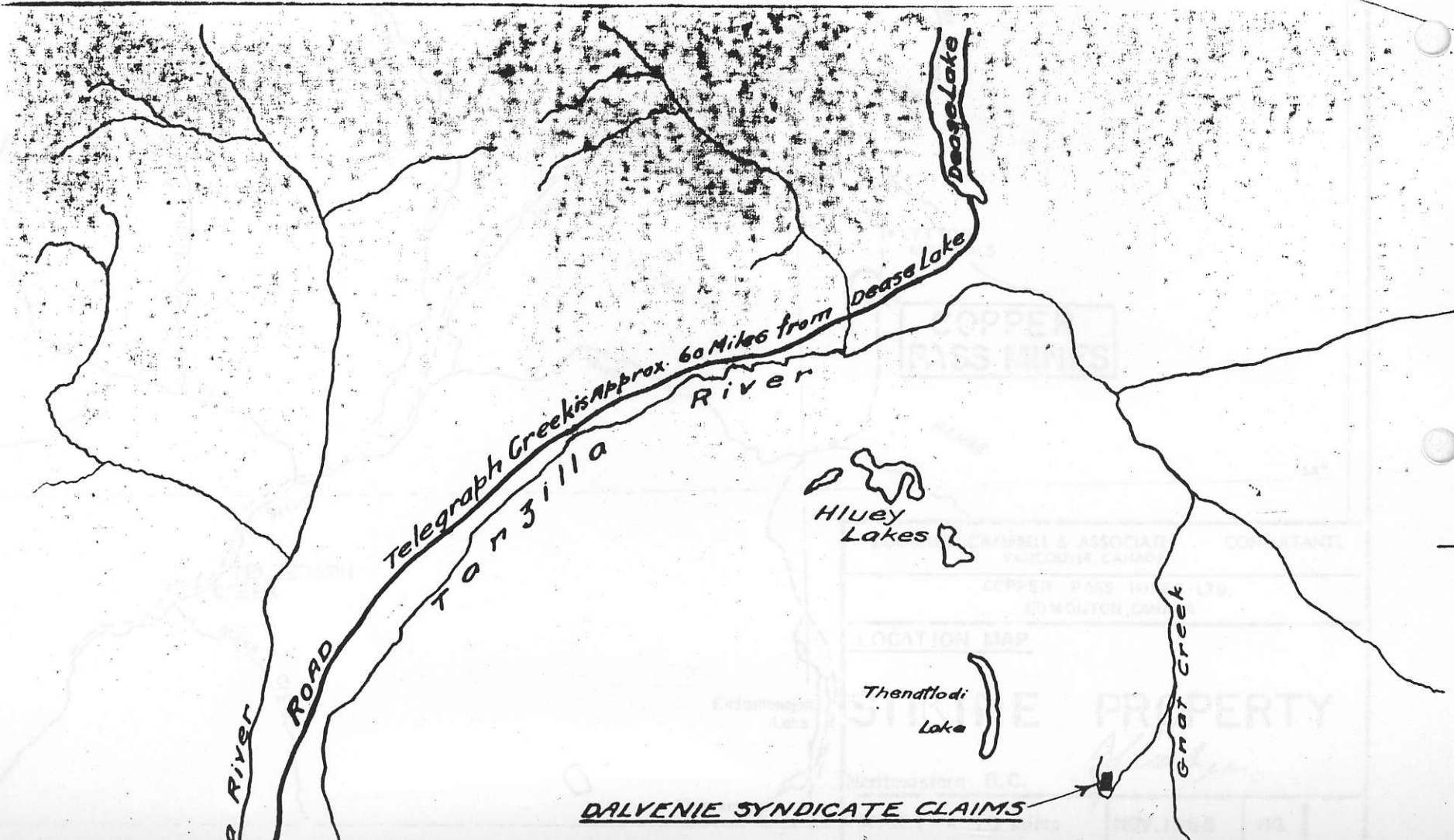


Figure 10.

Road during rainy period still navigable by four-wheel drive vehicles; photo looking east down the tote road. In vicinity of downhill line Induced Polarization Anomaly.



Dease Lake

Dease Lake

Telegraph Creek is approx. 60 Miles from Dease Lake

River

Tanjilla

Hiuey Lakes

Thendfodi Lake

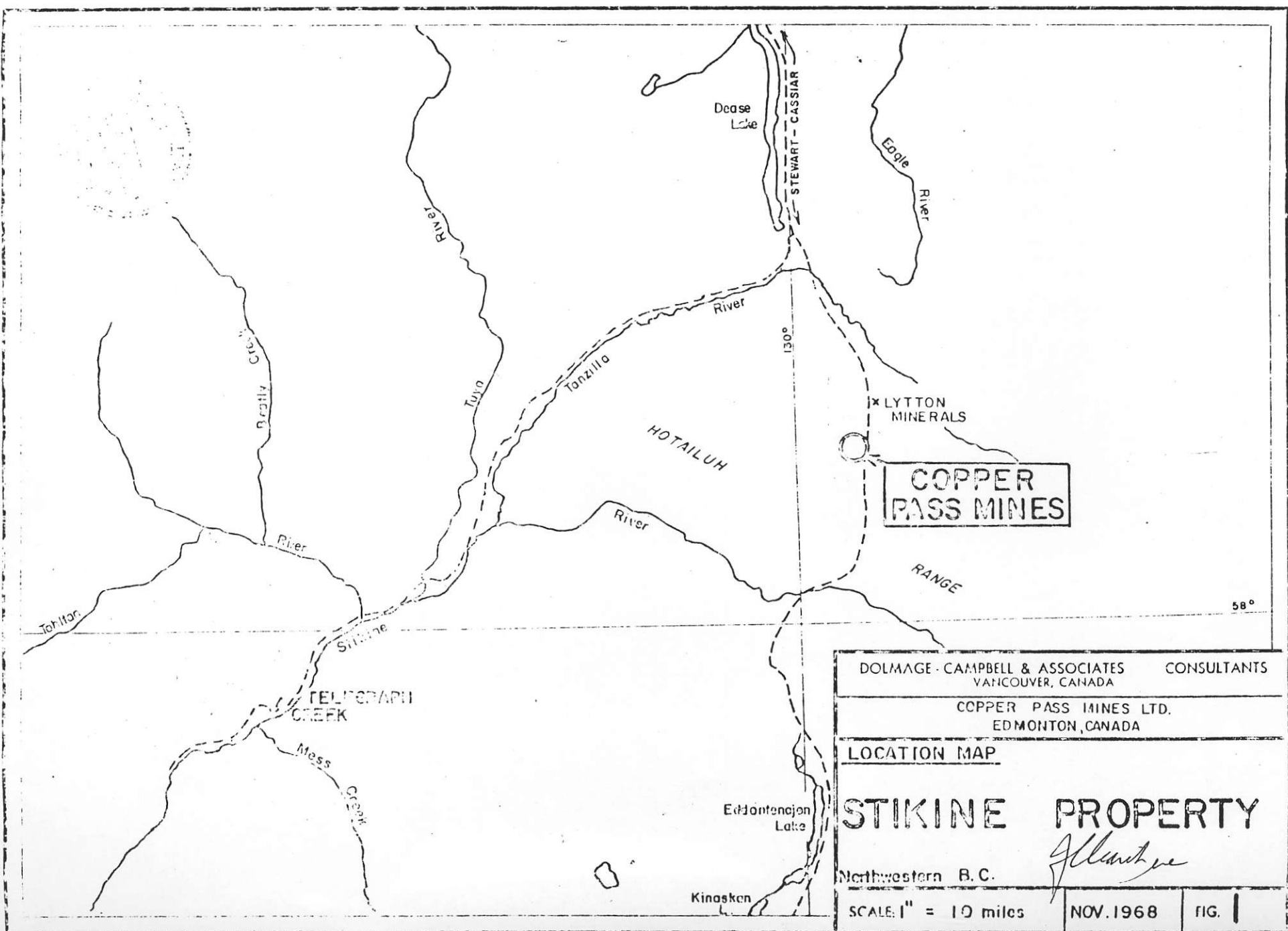
Gnat Creek

la River

ROAD

DALVENIE SYNDICATE CLAIMS





DOLMAGE - CAMPBELL & ASSOCIATES CONSULTANTS
VANCOUVER, CANADA

COPPER PASS MINES LTD.
EDMONTON, CANADA

LOCATION MAP

STIKINE PROPERTY

Northwestern B.C.

SCALE: 1" = 10 miles

NOV. 1968

FIG. 1