

ELK  
PHONE REPORT

17 Apr. 76

861223

Fist hole

AT 37+50W, 8N

Some sp & cp in andesitic tuffs 110 to 390'  
 Hole stopped 15 May @ 483'

Second hole

Now on, at 44W 9 to 10N

Actinolite replaced by po & some po appears  
 to be replaced by minor cp?

Rate of progress

150' per day (2 shift(3)) on good days  
 100' " " " " bad "

G.L. → P.A.

8:00  
Fri  
D.A.  
Planned in

24 Elk Project - Dan McKechnie  
Samples - gnochem

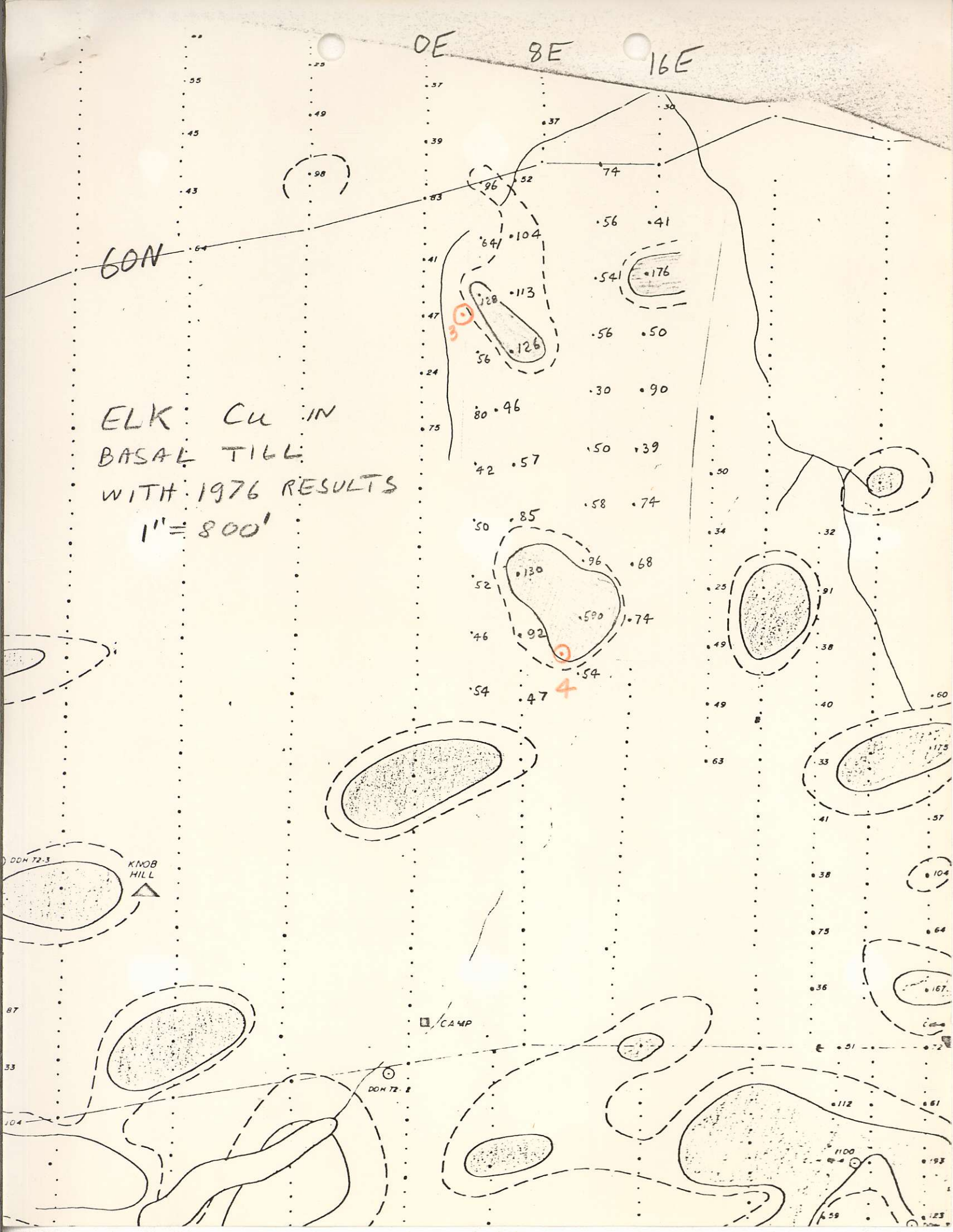
No	Cu-pdm	Znppm	Mo ppm
6BR-3001 12E 24N	54	130	3
* 3002 28N	590	120	31
3003 32N	96	75	7
3004 36N	58	103	3
3005 40N	50	54	7
3006 44N	30	29	2
3007 48N	56	91	2
3008 52N	54	60	1
3009 56N	56	74	1
3010 60N	74	86	3
3011 4E 60N	96	87	9
3012 56N	64	43	10
3013 52N 128	138	90	

		<u>Cu ppm</u>	<u>Zn ppm</u>	<u>Mo</u>
3014	4E 48N	56	270	26
3015	4E 44N	80	42	15
3016	4E 40N	42	46	3
3017	4E 36N	50	150	2
[	4E 32N 3018 - 80 mesh	52	88	2
	fresh. 3018 - rock portion	40	2550	4
3019	4E 28N	46	62	3
3020 - rock	4E 24N	54	110	12
3021 -	20W 8S	68	110	4
3022 -	20W 4S	80	138	2
*→ 3023	36 to 00W. B.L.	66	97	3

0E 8E 16E

60N

ELK CU IN  
BASAL TILL  
WITH 1976 RESULTS  
1" = 800'



GE SE 16E

CON

11/20/78  
11/20/78  
11/20/78  
11/20/78



- 2.8
- 4.8
- 9.6
- 19.2
- 38.4
- 76.8

72-3  
KNOB HILL  
▲

■ CAMP

○ DOM 12

○ DOM 12

OE 8.E

124 60N

ELK

Zn in BASAL TILL  
INCLUDING 1976  
RESULTS.  
1" = 800'

KNOB  
HILL  
▲

□ CAMP

○ DGM 72-8

Case Point

○ DGM 72-1

