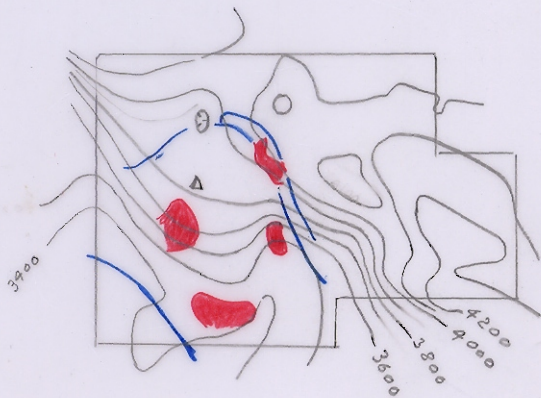


1" = 2 miles

● Anomalies
~ Geolog. cts
≡ Airmag, ♂



Elk claims
861212

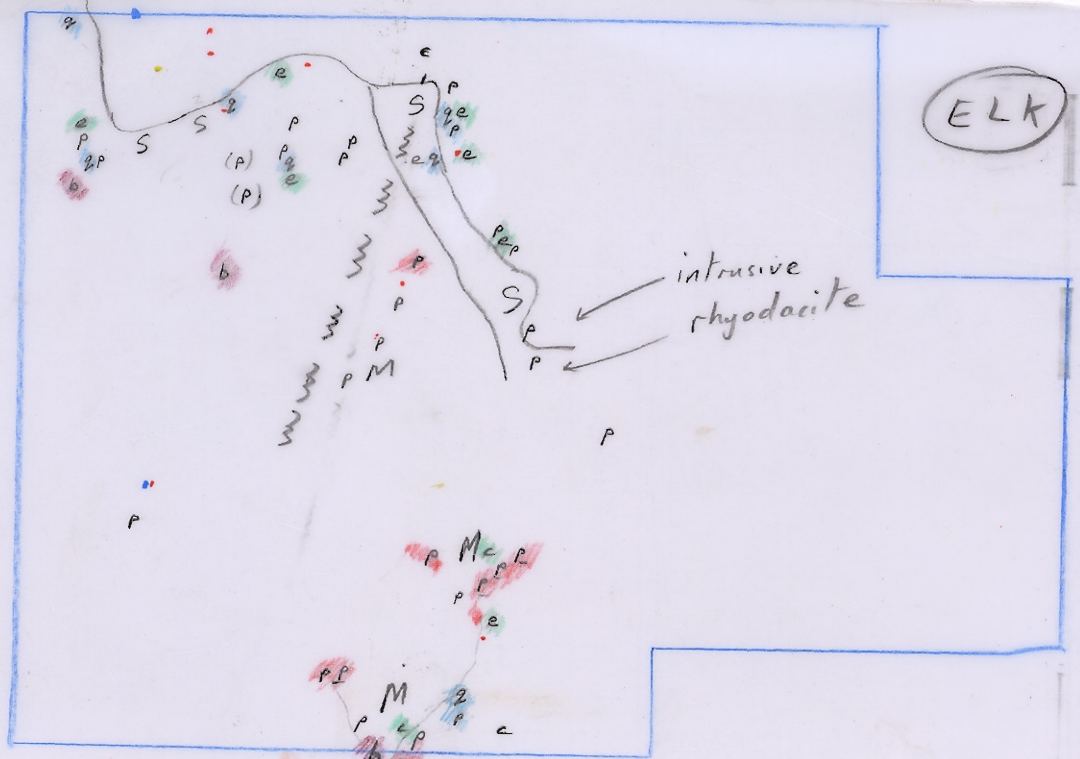
• CP
• MO

a, p etc. = alt

• bio
• z & zP

• c e d.
& cp ep
c_g e_g p_g

• heavy py.



~ S +17.

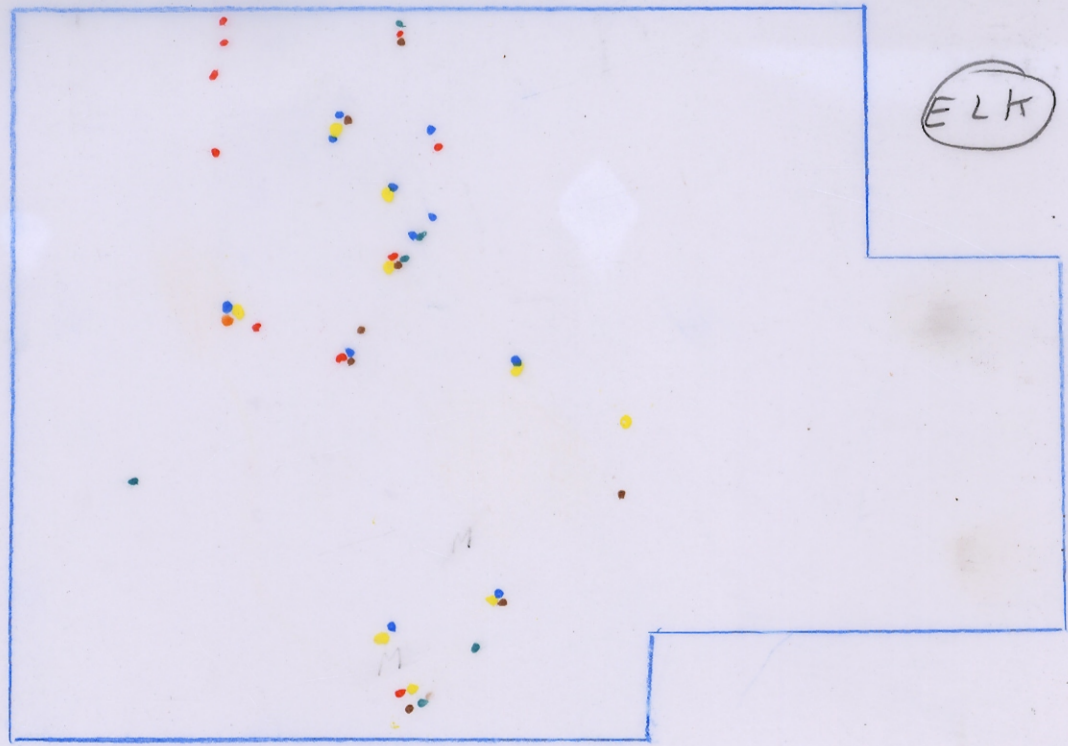
~ Cu +100

~ Mo +4

~ Ag +1.5

~ Zn +150

~ Pb +50



ELK

reg. mag

800 scale mag

