

Cross section - Trench 92-1  
- East Wall

NE

Au (ppb)  
372

313

495

680

948

570

728

412

Au (ppb)  
160

385

215

225

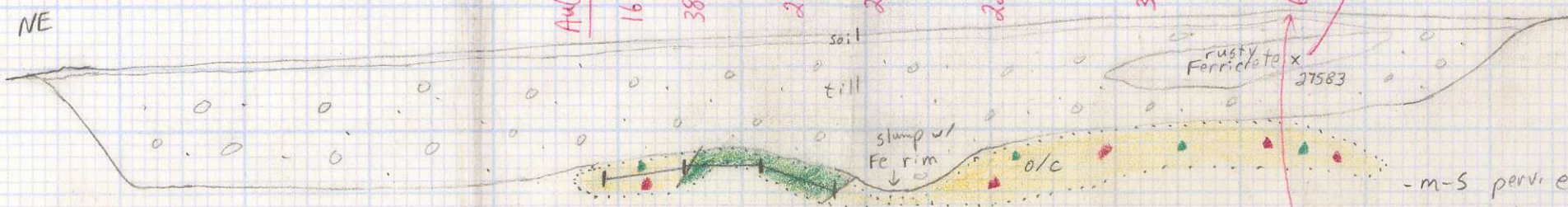
220

37

60

26

SW



o/c: - diorite to monzonite bx w/ less than 5% syenite clasts; becomes more dioritic matrix to NE; py occurs as disseminated blebs b/w 2 to 10% (<4mm blebs); minor Fe py; ep blebs (2-3% avg) (3-4mm); chlorite patches (1-2%) (3-6mm); no mal seen

25582

25581

25580

25579

25578

25577

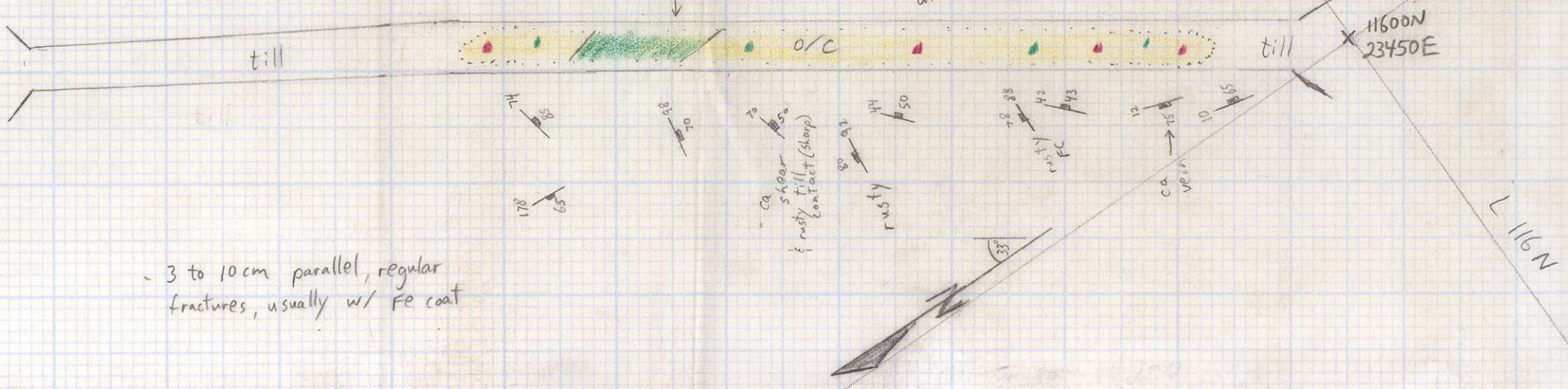
25576

- m-s perv. ep. blebs in bx  
- blebby py - mod

area of intensely sheared, friable, crumbly oxidized, ca altered rock for 50 cm below till

- cl volc forms a more resistant ridge - altered aug. porph flow (or very large clast)

Plan - Trench 92-1



- 3 to 10 cm parallel, regular fractures, usually w/ Fe coat

Placer Dome Inc	
Trench 92-1	
Big Kidd Area	
drawn by: Paul Turnbull	NTS: 92 H 15/E
date: May, 1992	Scale: 1:200

861144  
Shear

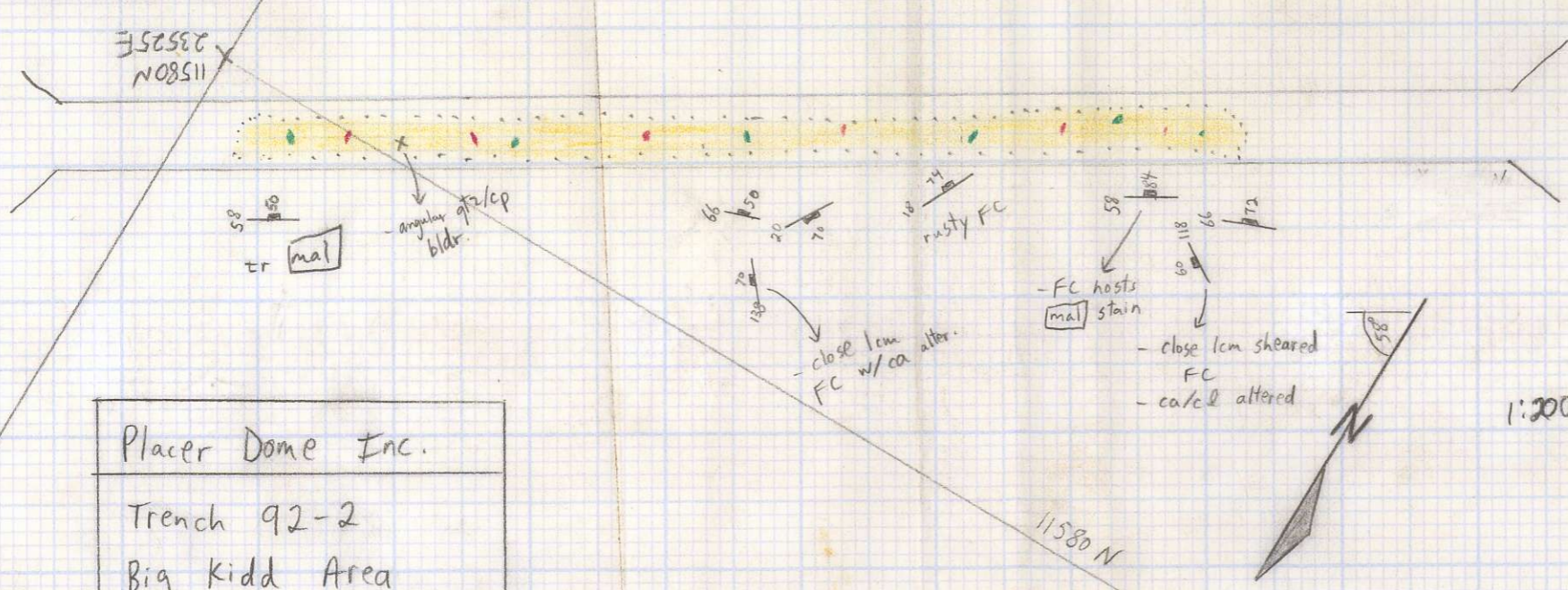


Cross section - Trench 92-2 - Eastern Wall



- intrusive bx: diorite matrix w/ 15% m2 clasts (submg), 5% syenite (pink) clasts, and about 5% ang. porph. flow clasts; clasts range b/w 1cm → 5cm  
 - blebby py and ep (disem) (2-3%)  
 - some cl patches  
 - perv. carb. and silica

Plan - Trench 92-2

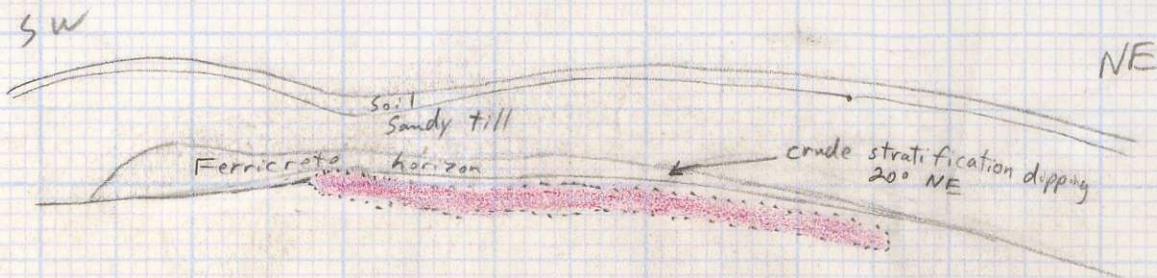


Placer Dome Inc.	
Trench 92-2	
Big Kidd Area	
drawn by: Paul Turnbull	NTS: 92 H15/E
date: May, 1992	Scale: 1:200

1:200



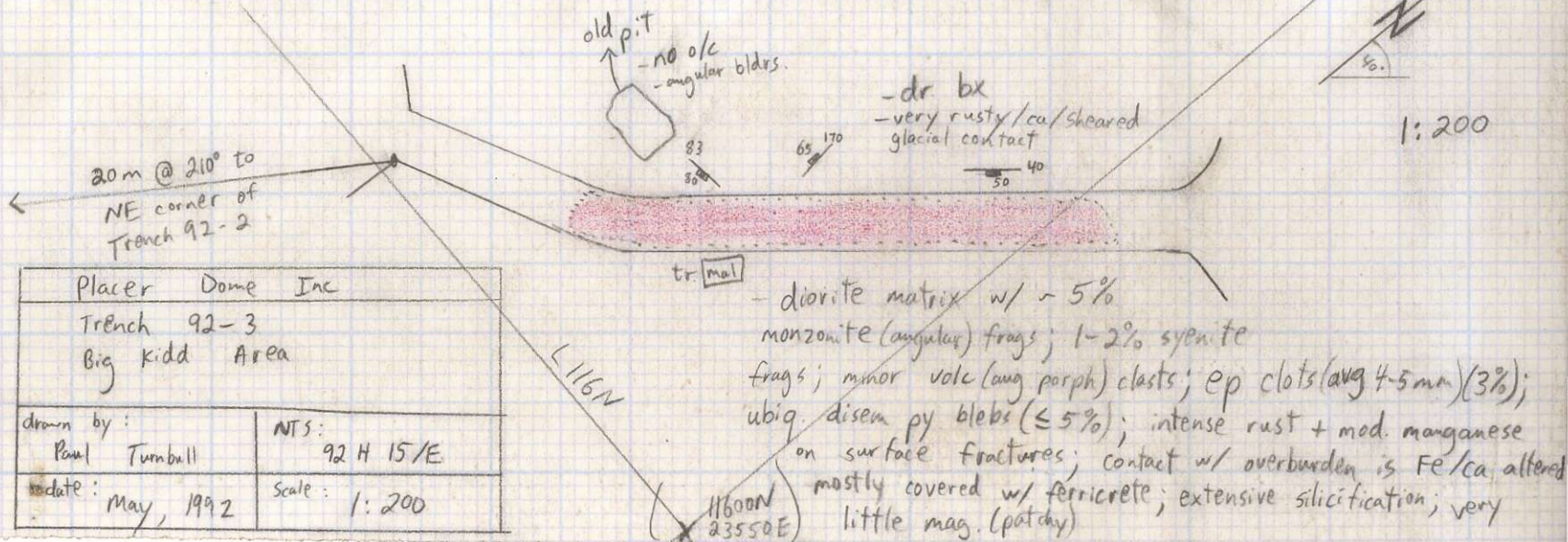
# Cross Section - Trench 92-3 - West wall



- samples may have some ferricrete contamination, but boulders are very local

	25610	25609	25608	25607	25606
Au (ppm)	1133	1073	608	570	545
Cu (ppm)	31	41	20	24	25

## Plan - Trench 92-3



Placer Dome Inc	
Trench 92-3	
Big Kidd Area	
drawn by:	NTS:
Paul Turnbull	92 H 15/E
date:	Scale:
May, 1992	1:200

tr. mal  
 - diorite matrix w/ ~ 5% monzonite (angular) frags; 1-2% syenite frags; minor volc (aug porph) clasts; ep clots (avg 4-5 mm) (3%); ubiq. disem py blebs ( $\leq 5\%$ ); intense rust + mod. manganese on surface fractures; contact w/ overburden is Fe/ca altered mostly covered w/ ferricrete; extensive silicification; very little mag. (patchy)

11600N  
23550E



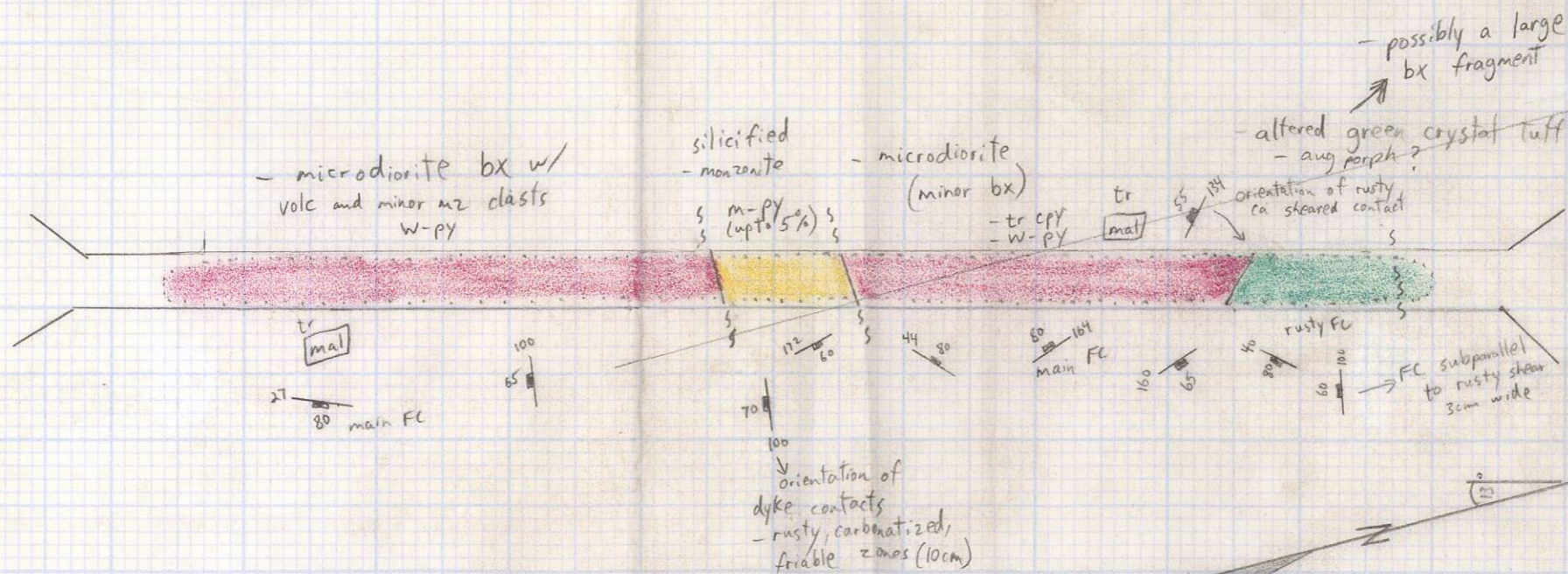
Cross Section - Trench 92-4 - East Wall



(Samples painted on west wall)

	25599	25598	25597	25596	25595	25594	25593
Cu (ppm)	148	332	311	258	448	215	277
Au (ppb)	24	81	68	58	59	43	67

Plan - Trench 92-4



11400N  
23750E

1111N

Placer Dome Inc	
Trench 92-4	
Big Kidd Area	
drawn by: Paul Turnbull	NTS: 92 H 15/E
date May, 1992	Scale 1:200

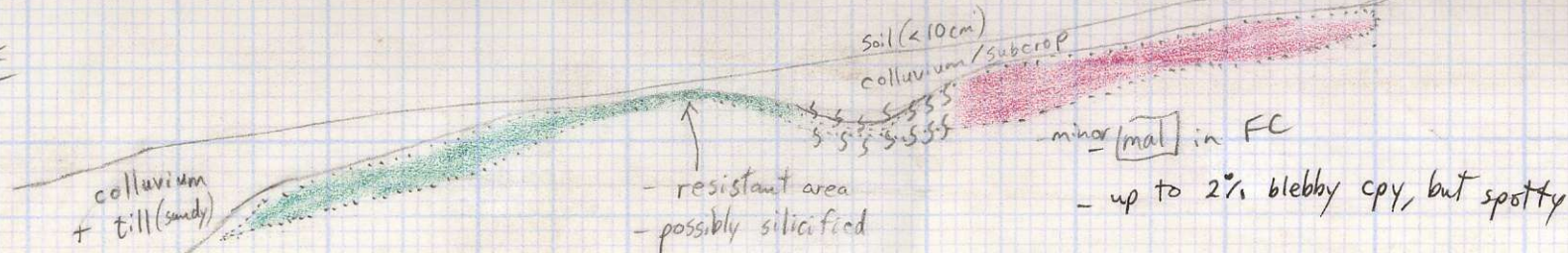
1:200



Cross Section - 92-5 Trench - South Wall

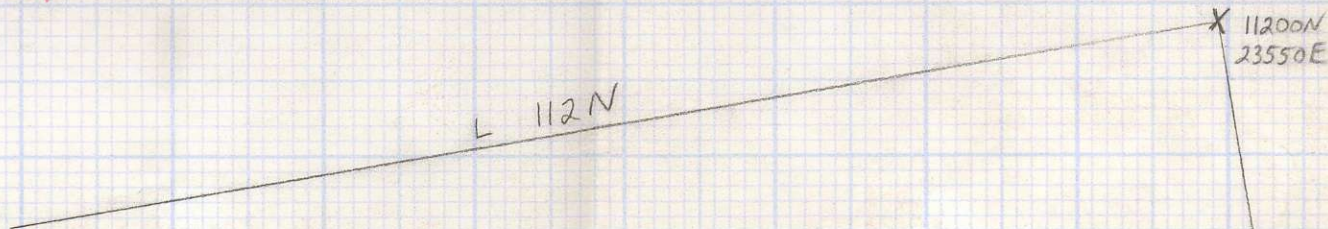
E

W o/c

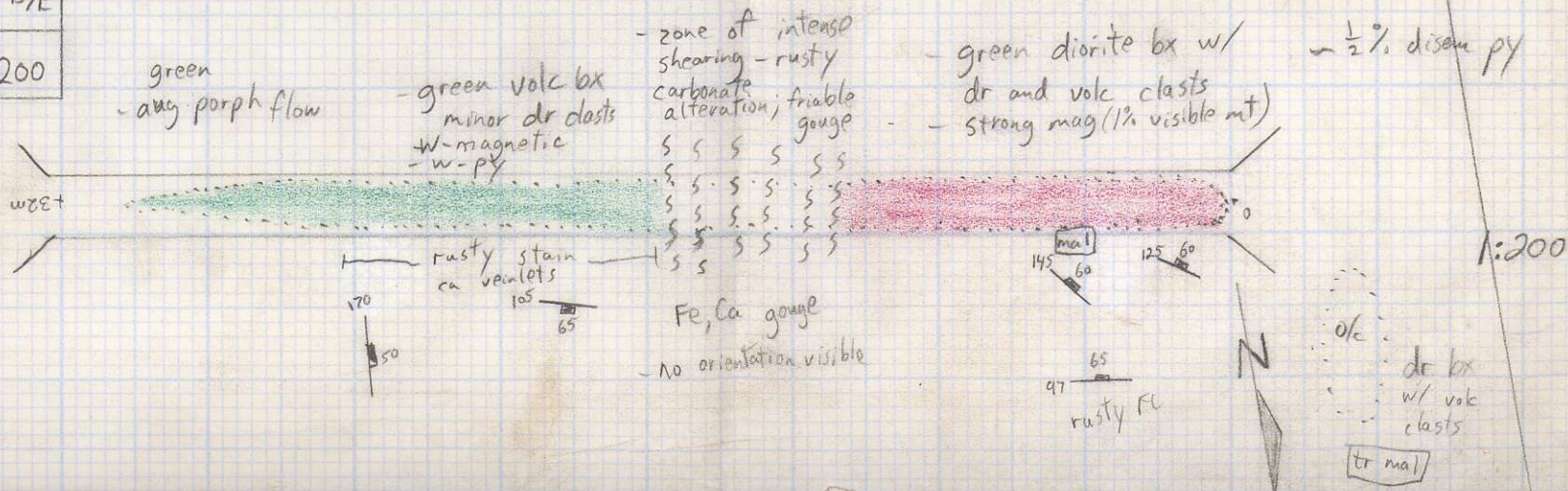


	25605	25604	25603	25602	25601	25600
<u>Cu (ppm)</u>	725	1000	1938	1638	7211	1150
<u>Au (ppb)</u>	28	31	37	35	91	28

Plan - Trench 92-5



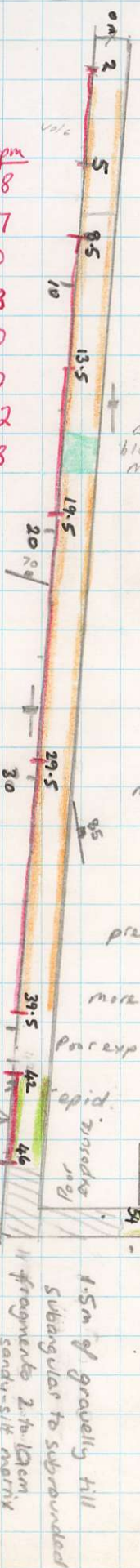
Placer Dome Inc.	
Trench 92-5	
Big Kidd Area	
drawn by: Paul Turnbull	NTS: 92 # 15/E
date May, 1992	Scale: 1:200





# Trch 6

No's	SAMPLE METRES		WIDTH	Au(ppb)	Cu(ppm)
	From	To			
27570	2	5	3m	19	228
27571	8.5	13.5	5m	3	167
27572	13.5	19.5	6m	1	160
27573	19.5	29.5	10m	1	153
27574	29.5	39.5	10m	3	200
27575	42.0	46.0	4m	2	140
<del>27626</del>	54.0	59.0	5m	12	402
27627	59.0	63.0	4m	5	148



fine microdiorite fine epidote veinlets.

med green moderately fractured, fm grained equigranular microdiorite, variable epidote veining med to mps magnetic

Predominant jointing 10-20cm E-W subvertical

more strongly epidotized & epid veined microdiorite

~2m block of feldspar porphyritic andesite. med green, med fractured mps magnetic. disseminated to bleby med grained Py. (1-3%)

more massively jointed fm grained microdiorite weak perv and veinlet epidote, local fine pyrite. Sections of finer andesite? (xenoliths?)

more closely jointed (5-10cm) microdiorite, v. weak epid. local fine carbonate veins sparse fine Py.

predom. fm. microdiorite

more epidote.

Por exp

epid.

Trinodite

Py

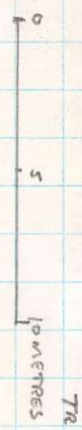
1.5m of gravelly till subangular to subrounded fragments 2 to 10cm sandy-silt matrix

Andesite Breccia Sub angular fragments 1-2cm mostly altered in fm Epidote 3rd matrix Epid veins common sparse Py section of strongly fractured epid and andesite and less epid and microdiorite

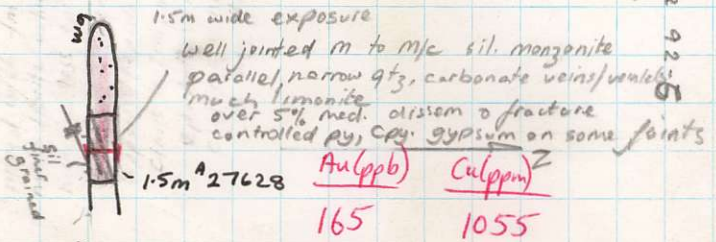
Strong - med fractured, mixed andesite > microdiorite. Andesite is locally feldspar porphyritic. Local carbonate veinlets. Fracture controlled fm Py upto 1-2%

11820N

GRID COORD 11850N 13600E



1:250

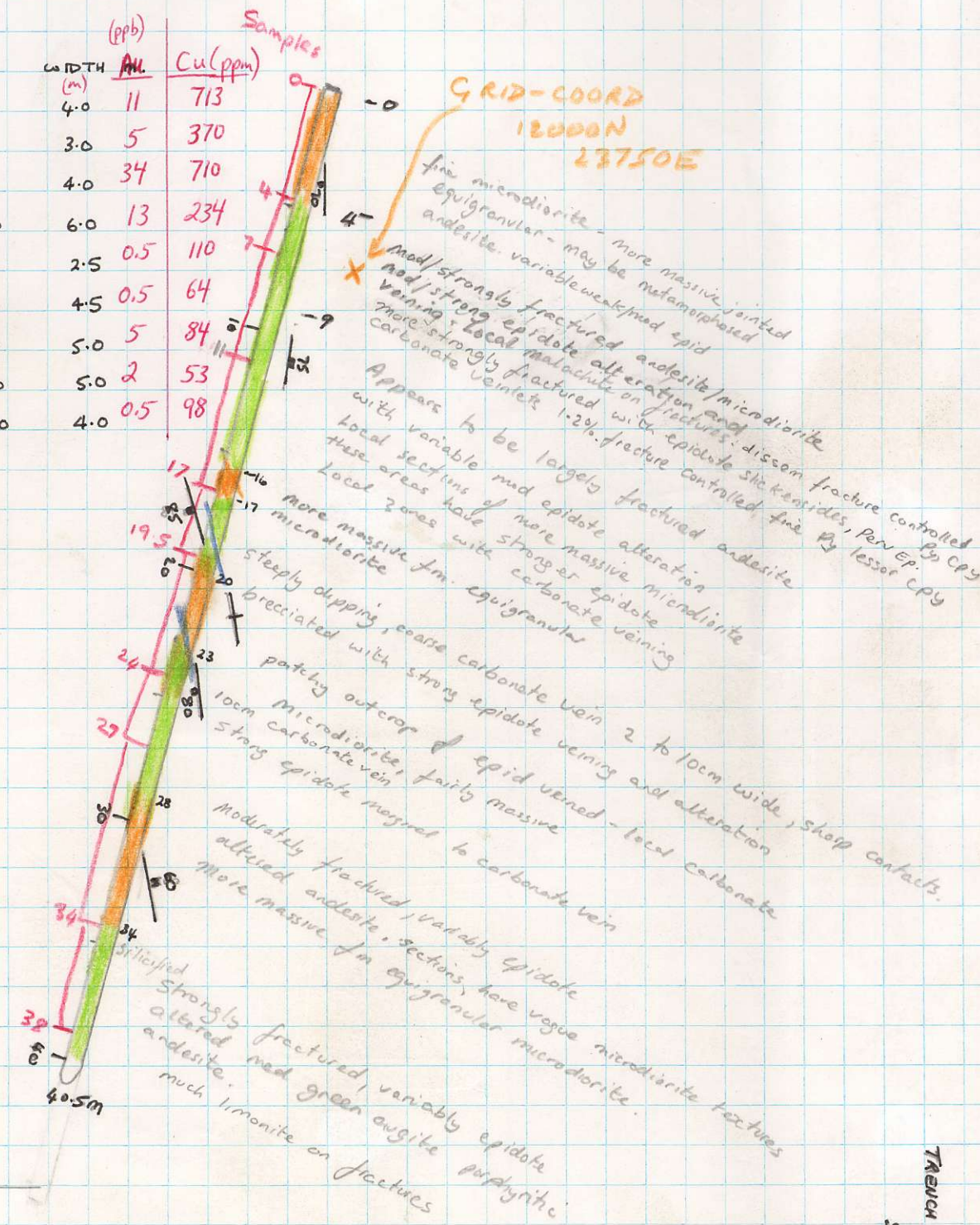


ROAD



# Trench 7

NO	SAMPLES metres		WIDTH (m)	Samples	
	FROM	TO		ANL (ppb)	Cu (ppm)
A 27629	0	4.0	4.0	11	713
27630	4.0	7.0	3.0	5	370
27631	7.0	11.0	4.0	34	710
27632	11.0	17.0	6.0	13	234
27633	17.0	19.5	2.5	0.5	110
27634	19.5	24.0	4.5	0.5	64
27635	24.0	29.0	5.0	5	84
27636	29.0	34.0	5.0	2	53
27637	34.0	38.0	4.0	0.5	98



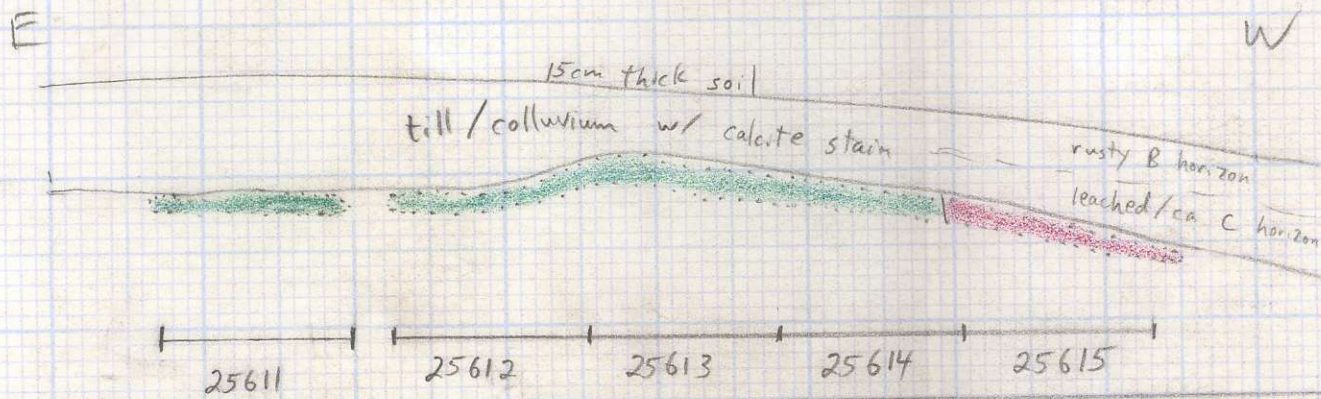
1:250

TRENCH 7  
SCALE 1:250 N



Placer Dome Inc.	
Trench 92-8	
North of Big Kidd	
drawn by: Paul Turnbull	NTS: 92 H15/E
date: May, 1992	Scale: 1:200

Cross section - Trench 92-8 - South wall



	25611	25612	25613	25614	25615
<u>Au(ppm)</u>	122	164	202	805	223
<u>Cu(ppm)</u>	6	3	1	0.5	0.5

Plan - Trench 92-8

