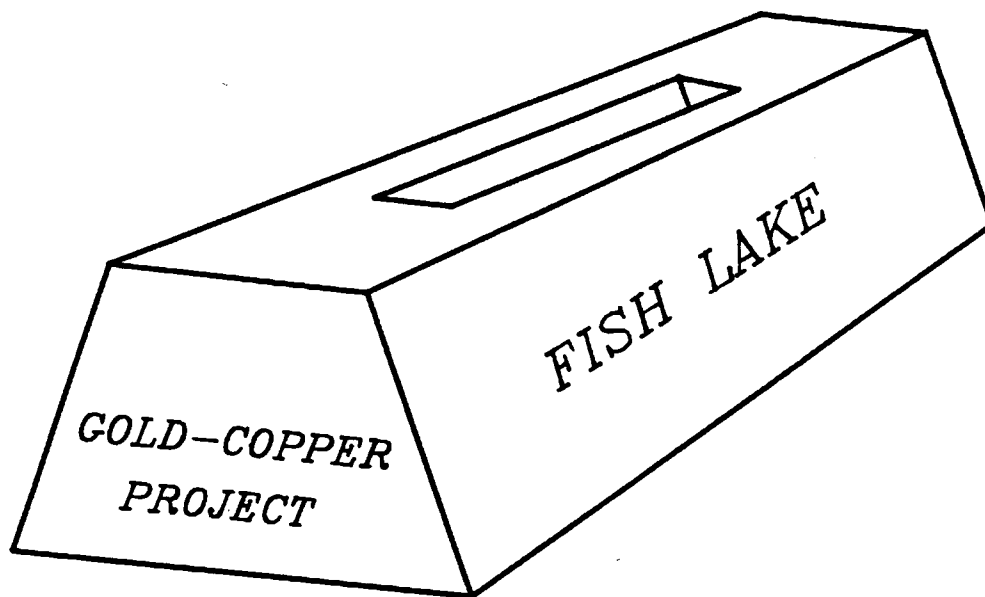
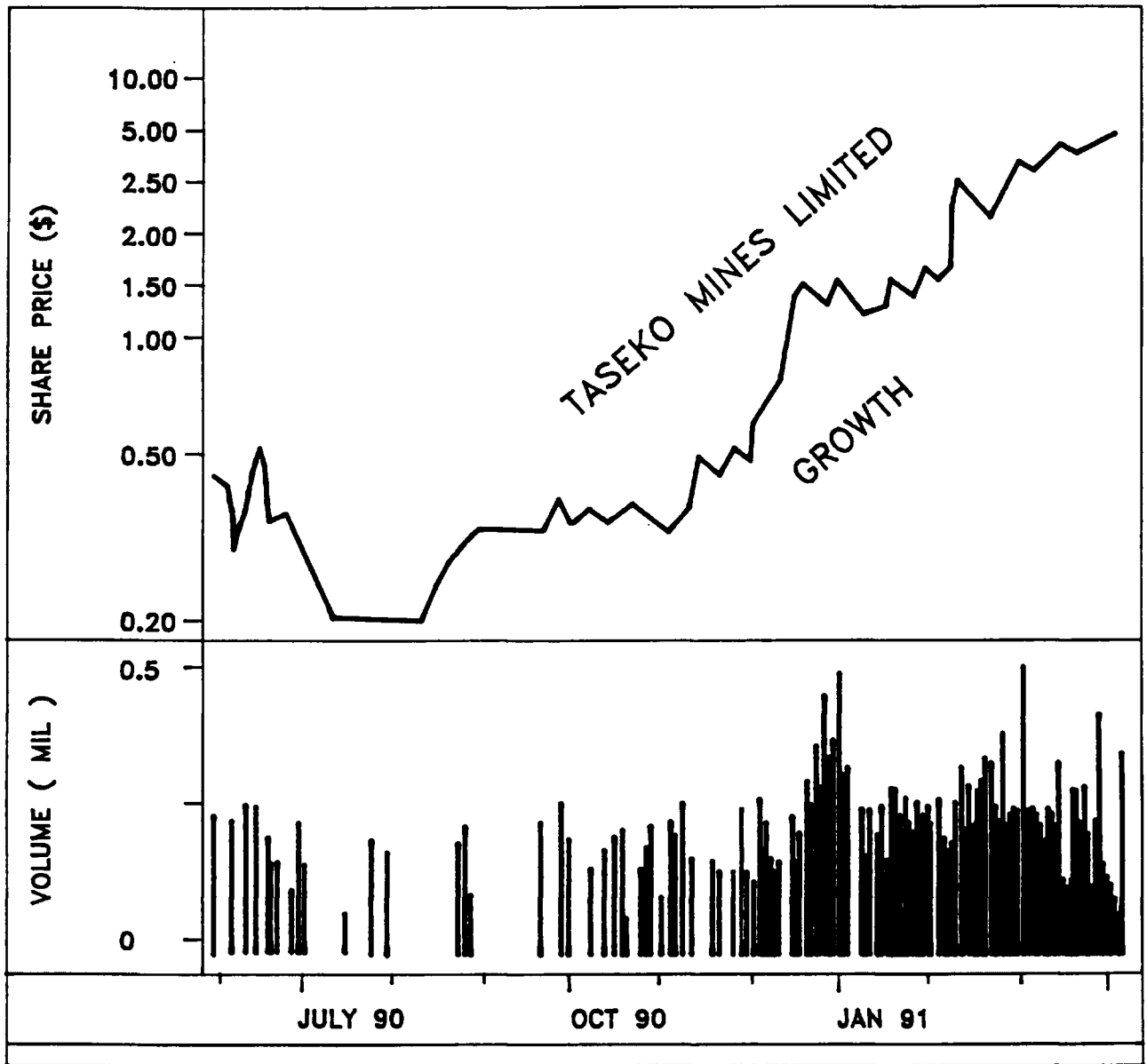


860946

TASEKO MINES LIMITED



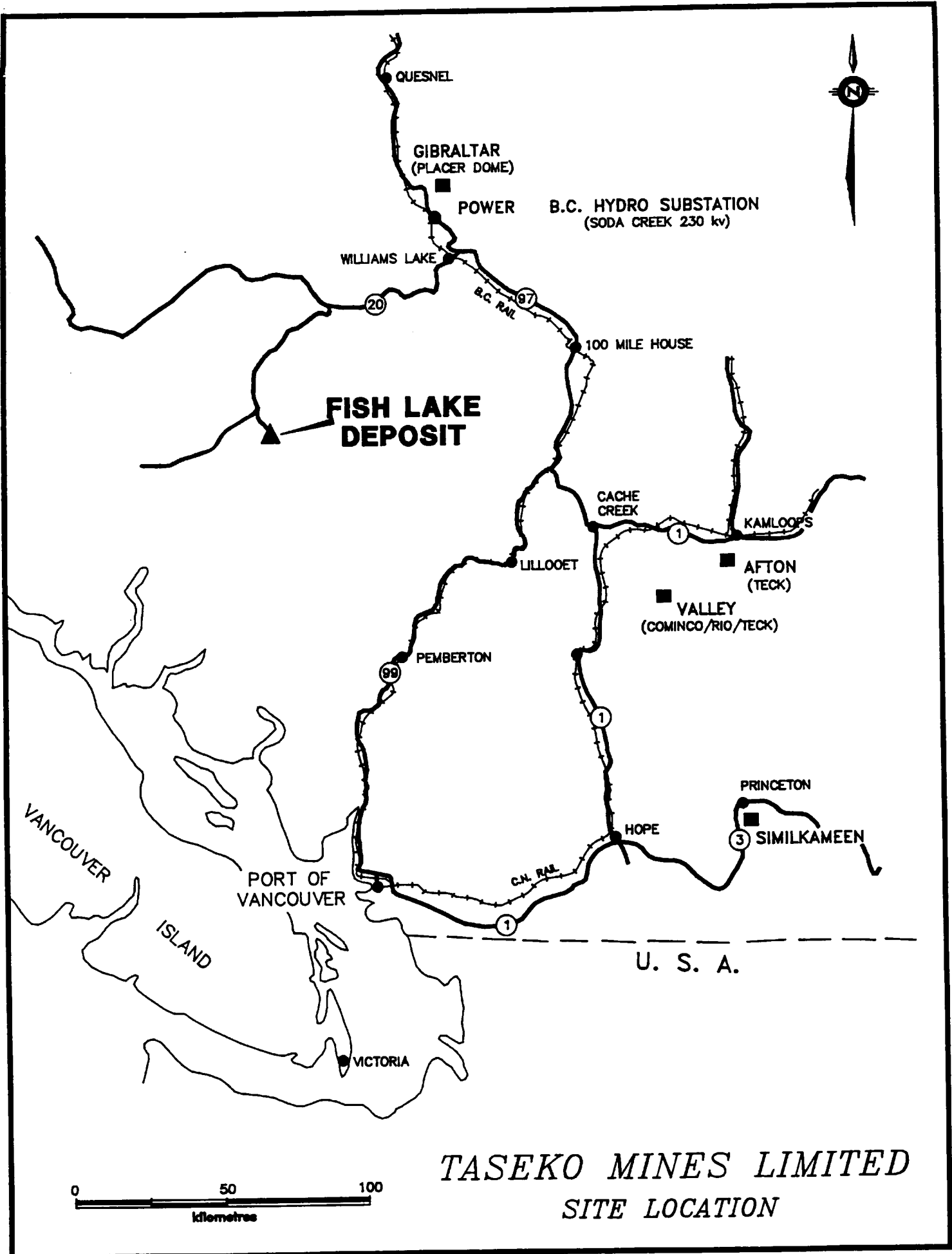


TASEKO MINES LIMITED

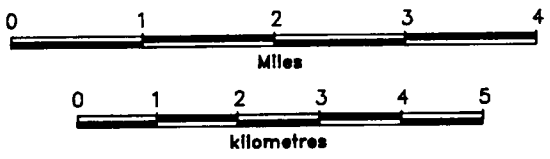
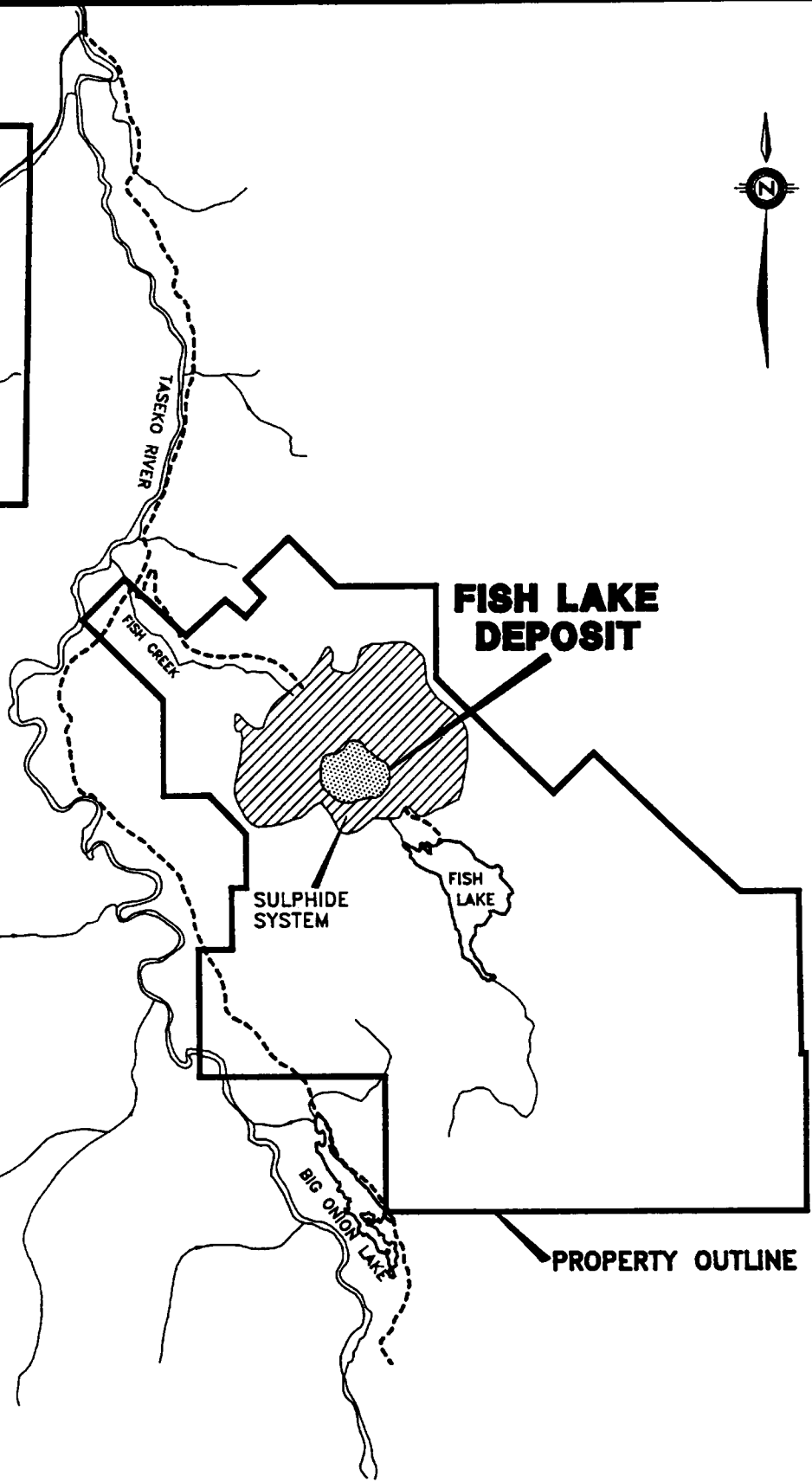
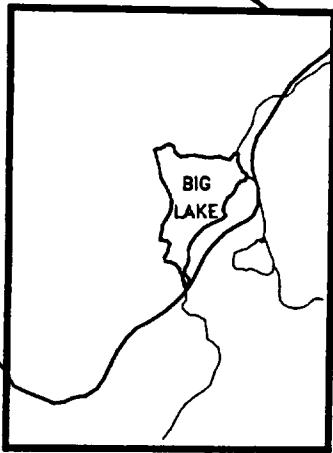


■ OPEN PIT MINES (TONS PER DAY)

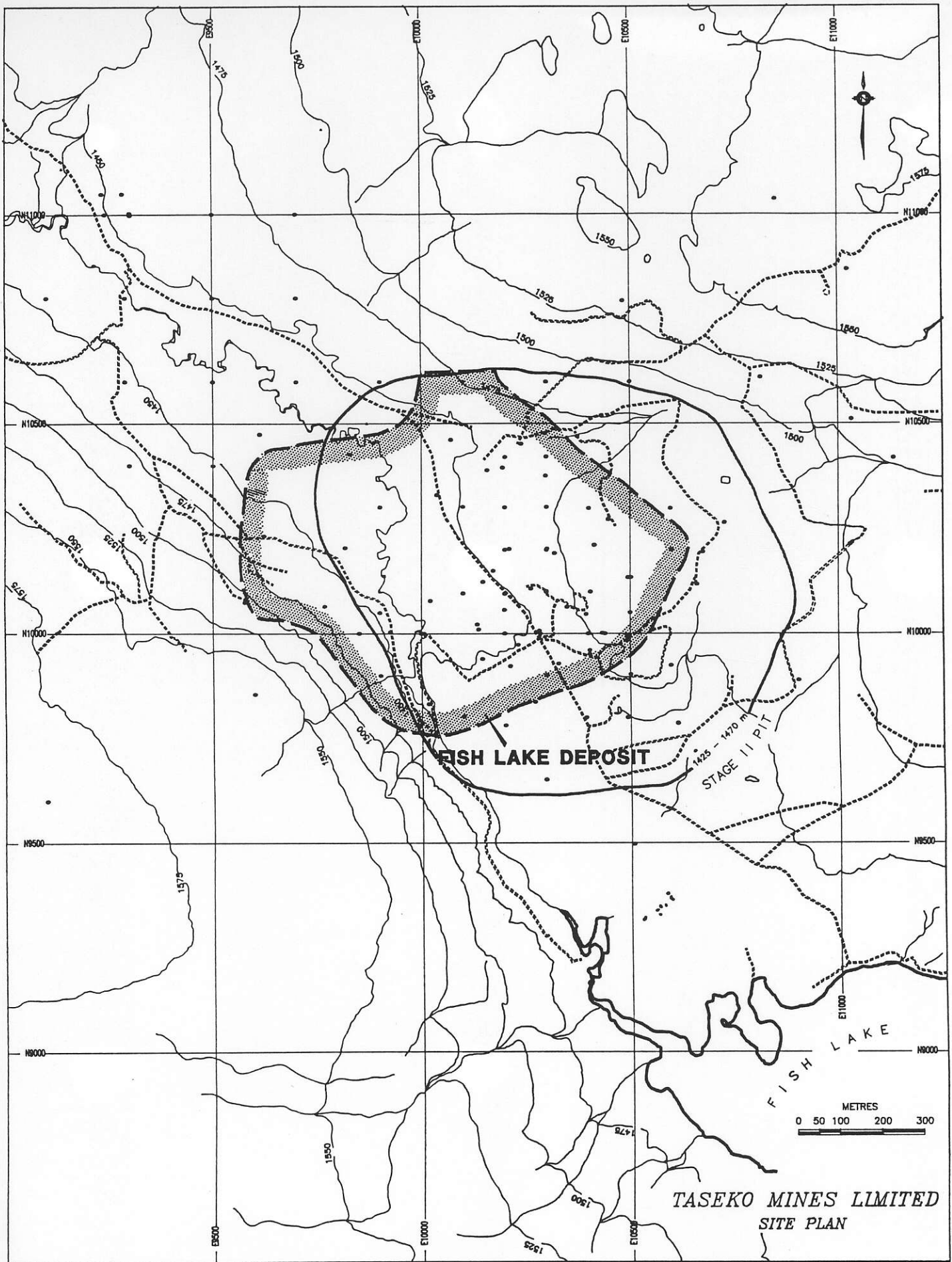
TASEKO MINES LIMITED
B.C. OPEN PIT MINES



PROPERTY OUTLINE



TASEKO MINES LIMITED
PROPERTY MAP



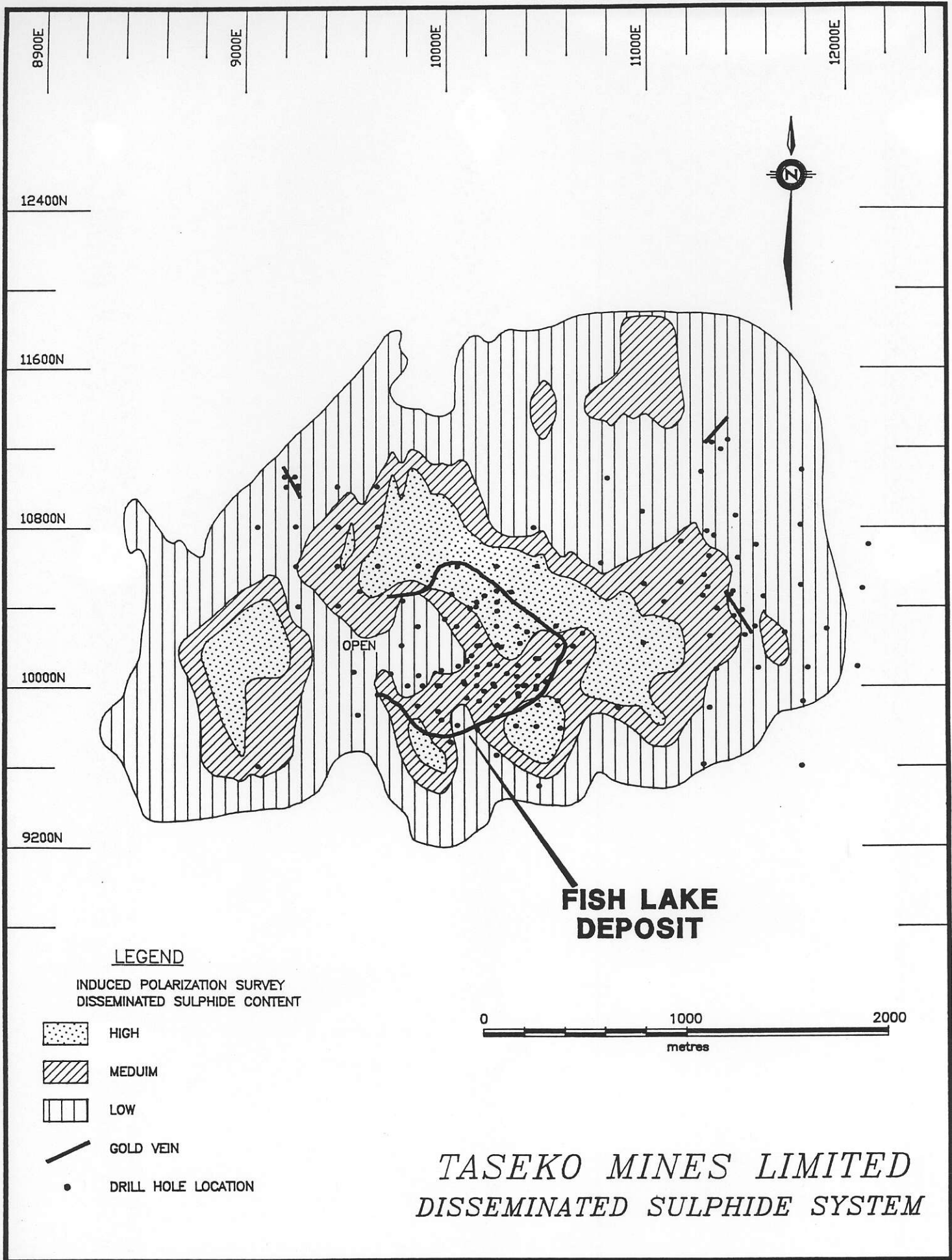
FISH LAKE DEPOSIT

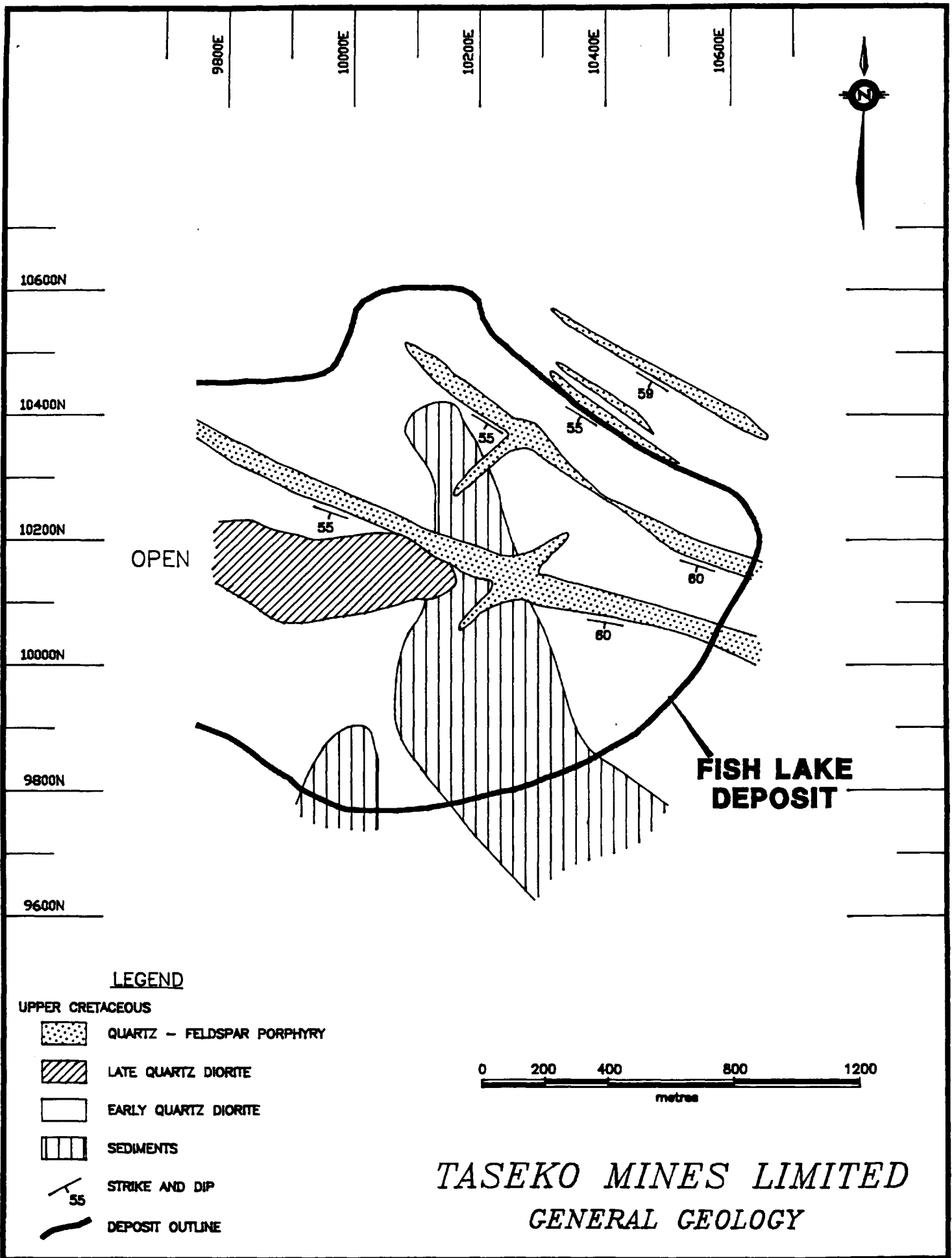
STAGE II PIT
1425 - 1470 M

FISH LAKE

METRES
0 50 100 200 300

TASEKO MINES LIMITED
SITE PLAN





9800E 10000E 10200E 10400E 10600E





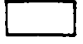
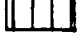


10600N
10400N
10200N
10000N
9800N
9600N

OPEN

**FISH LAKE
DEPOSIT**

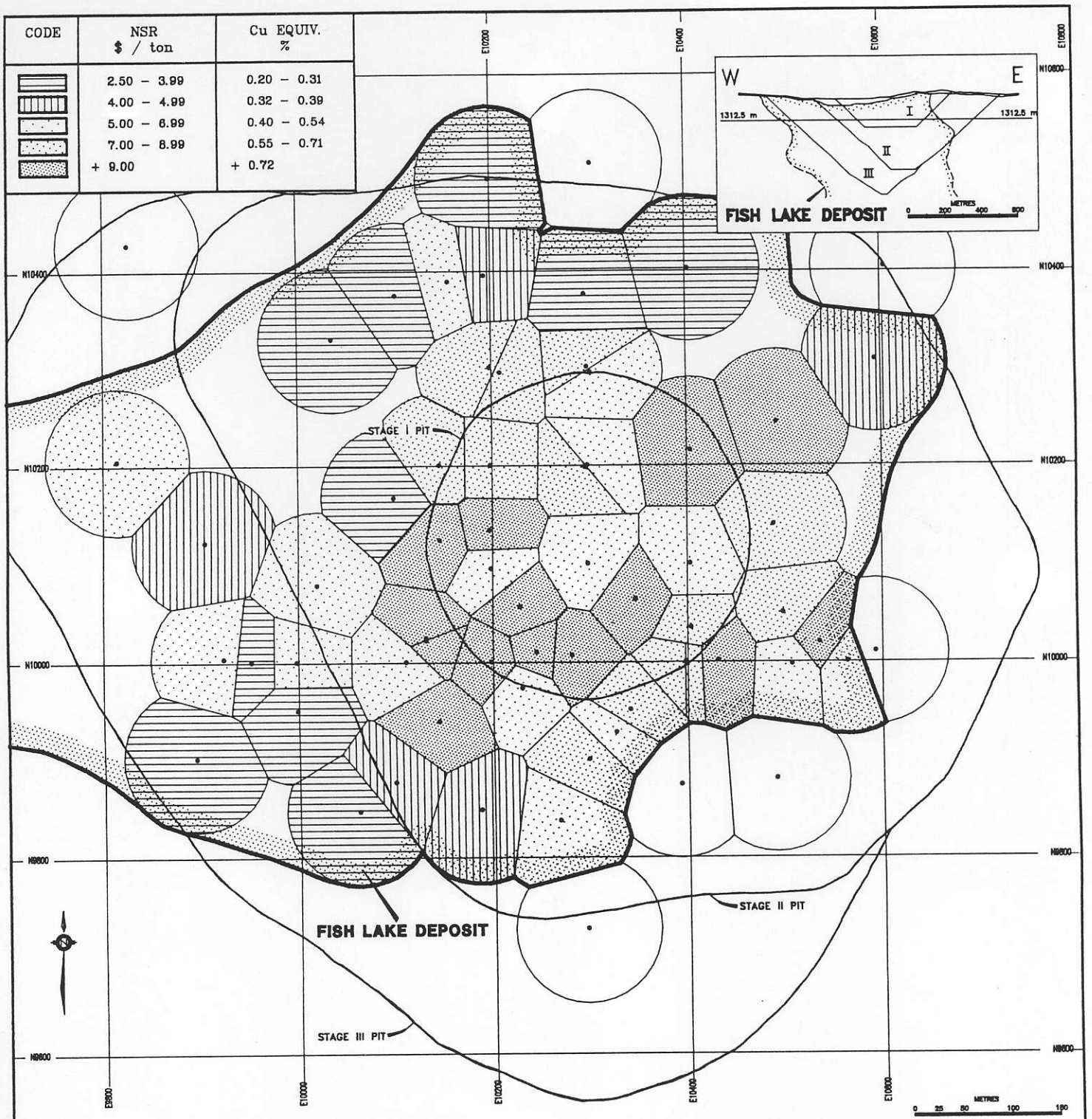
LEGEND

UPPER CRETACEOUS

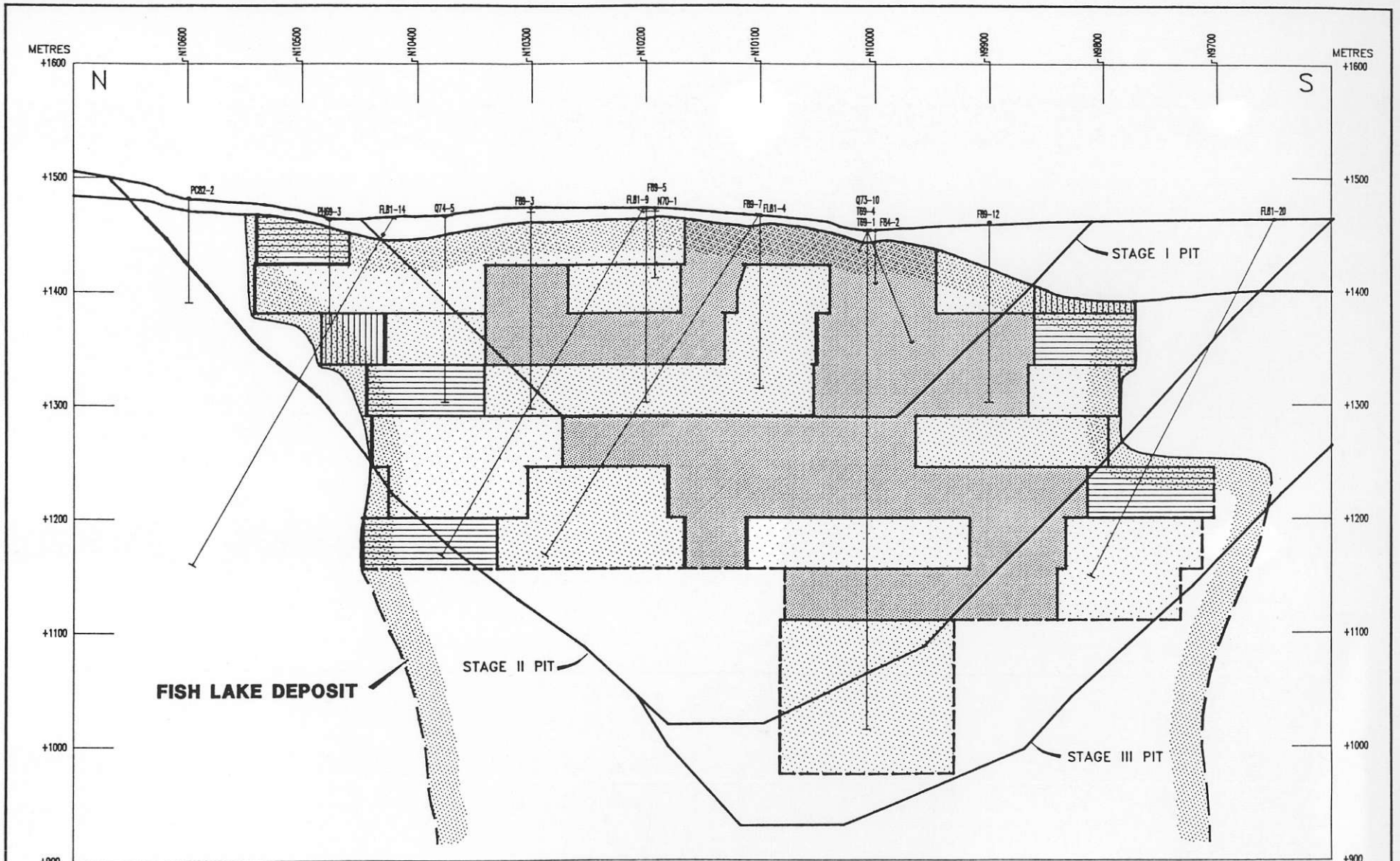
-  QUARTZ - FELDSPAR PORPHYRY
-  LATE QUARTZ DIORITE
-  EARLY QUARTZ DIORITE
-  SEDIMENTS
-  STRIKE AND DIP
-  DEPOSIT OUTLINE



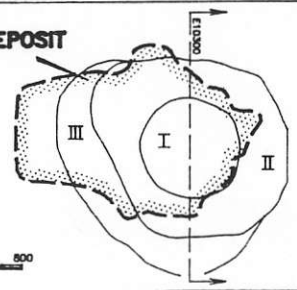
TASEKO MINES LIMITED
GENERAL GEOLOGY



CUTOFF GRADE		MINEABLE RESERVES 1290 - 1335 M BENCH					CUMULATIVE TOTAL - FROM SURFACE -					TASEKO MINES LIMITED	
NSR \$/ton	Cu EQUIV. %	TONS	Cu %	Au opt	NSR \$/ton	Cu EQUIV. %	TONS	Cu %	Au opt	NSR \$/ton	Cu EQUIV. %	FISH LAKE GOLD - COPPER PROJECT	
2.50	0.20	69,101,000	0.18	0.011	6.21	0.50	225,754,000	0.18	0.011	6.00	0.48	BENCH PLAN - 1312.5 m ELEVATION	
4.00	0.30	53,989,000	0.21	0.013	7.04	0.56	170,076,000	0.21	0.012	6.90	0.55	COMPOSITE ASSAYS 1290 m - 1335 m	
5.00	0.40	50,122,000	0.23	0.014	7.89	0.62	125,426,000	0.23	0.014	7.81	0.62		



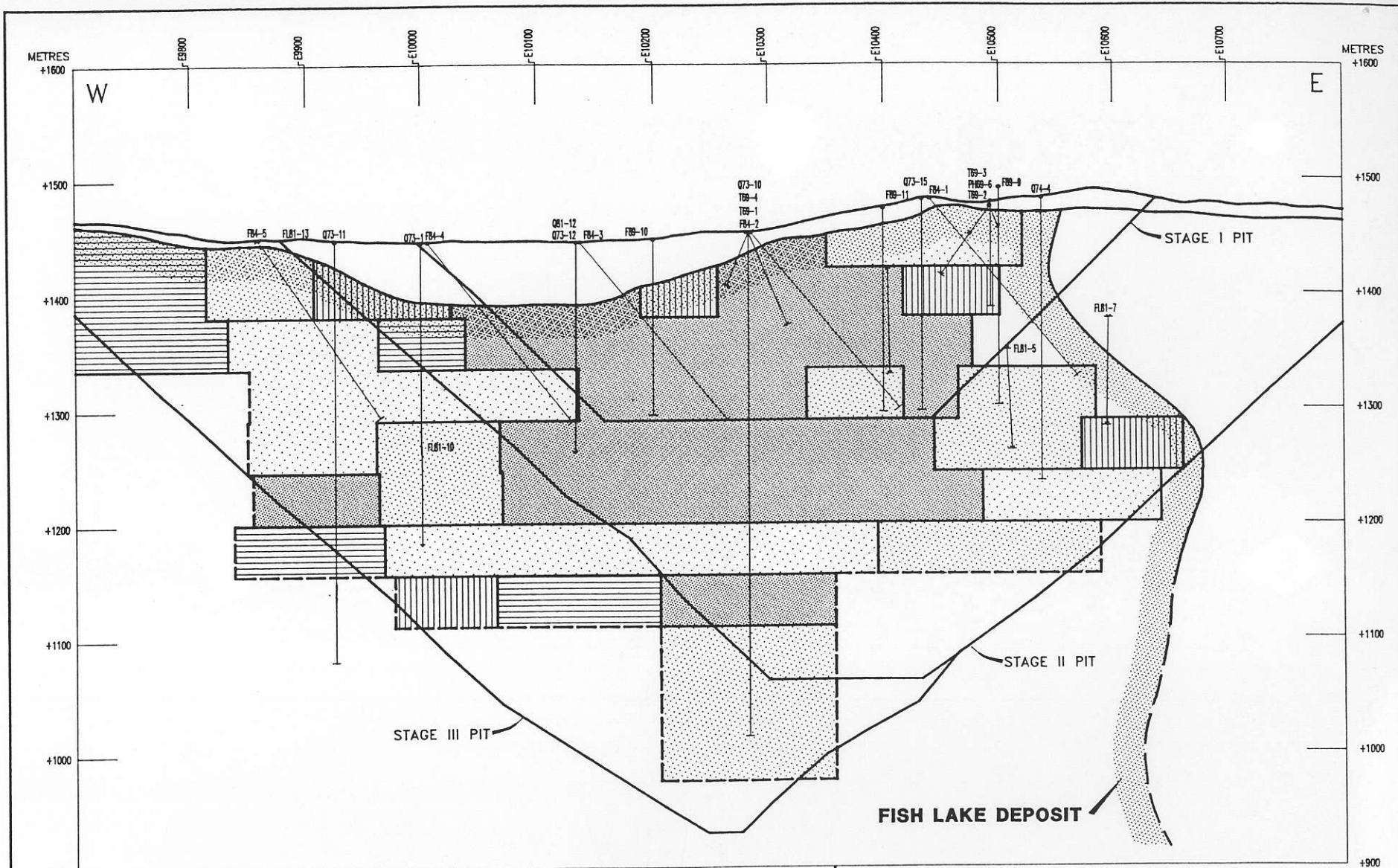
FISH LAKE DEPOSIT



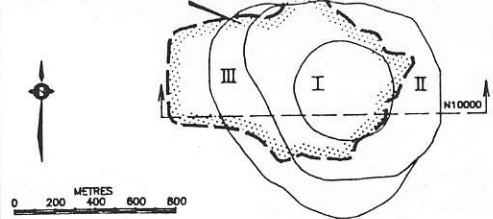
CODE	NSR \$/ ton	Cu EQUIV. %
	2.50 - 3.99	0.20 - 0.31
	4.00 - 4.99	0.32 - 0.39
	5.00 - 6.99	0.40 - 0.54
	7.00 - 8.99	0.55 - 0.71
	+ 9.00	+ 0.72



TASEKO MINES LIMITED
 FISH LAKE GOLD - COPPER PROJECT
 CROSS SECTION 10300 E
 45 m BENCH COMPOSITE ASSAYS

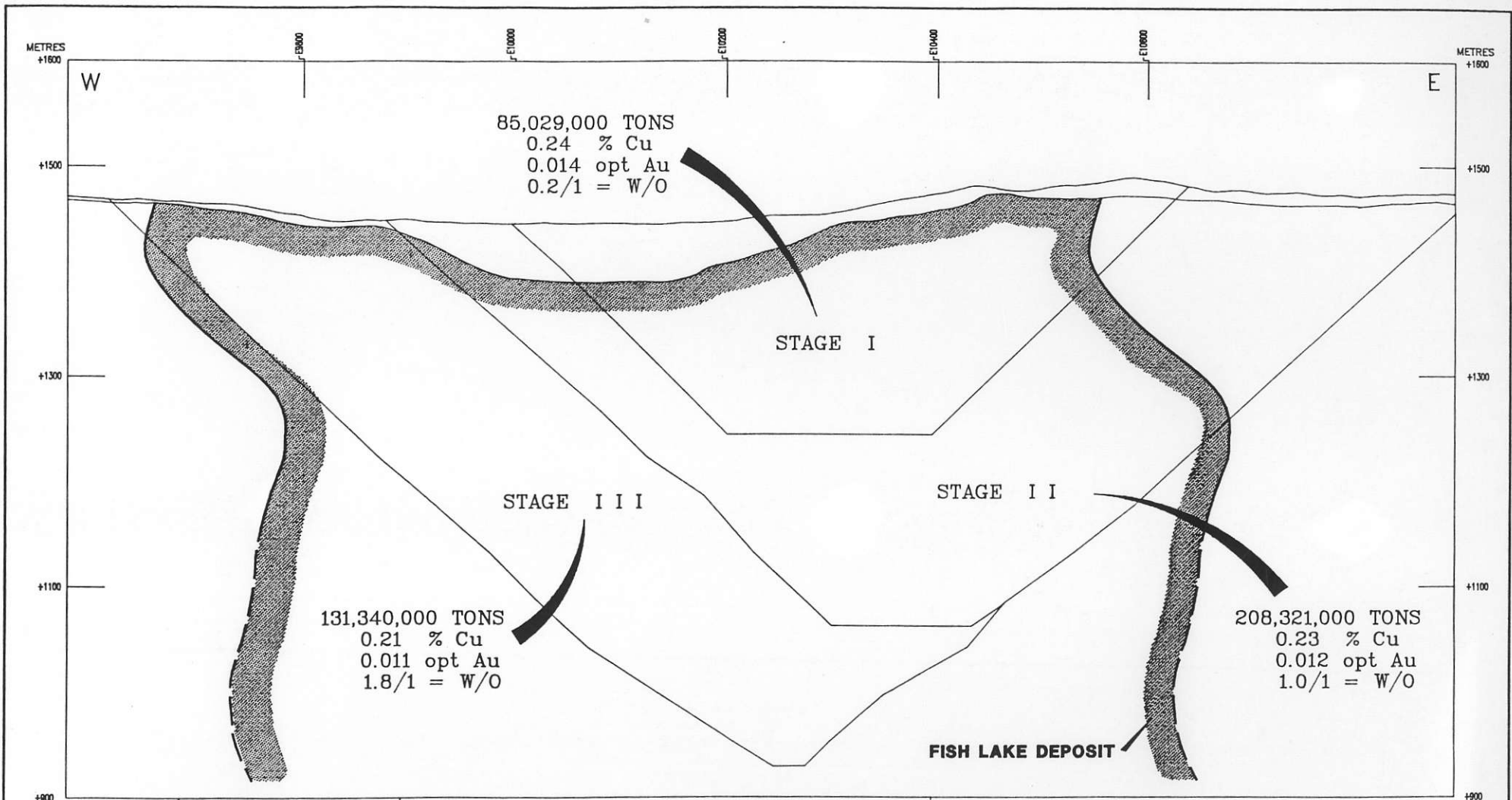


FISH LAKE DEPOSIT

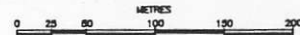


CODE	NSR \$/ ton	Cu EQUIV. %
	2.50 - 3.99	0.20 - 0.31
	4.00 - 4.99	0.32 - 0.39
	5.00 - 6.99	0.40 - 0.54
	7.00 - 8.99	0.55 - 0.71
	+ 9.00	+ 0.72

TASEKO MINES LIMITED
 FISH LAKE GOLD - COPPER PROJECT
 LONGITUDINAL SECTION 10000 N
 45 m BENCH COMPOSITE ASSAYS



CUTOFF GRADE		MINEABLE ORE RESERVES						
NSR \$/ ton	Cu EQUIV. %	TONS	Cu %	Au opt	Cu EQUIV. %	Au CONTAINED ounces	WASTE ORE	
2.50	0.20	497,700,000	0.21	0.011	0.53	5,475,000	0.8 / 1	
4.00	0.30	424,700,000	0.22	0.012	0.57	5,096,000	1.1 / 1	
5.00	0.40	342,000,000	0.24	0.013	0.62	4,448,000	1.6 / 1	
STAGE I PIT	0.20	85,029,000	0.24	0.014	0.62	1,194,000	0.2 / 1	



TASEKO MINES LIMITED
FISH LAKE GOLD - COPPER PROJECT
MINEABLE ORE RESERVES
0.30 % Cu EQUIVALENT CUTOFF

FISH LAKE GOLD - COPPER PROJECT

EVALUATION PARAMETERS

METAL PRICES

GOLD \$ US 400 / oz

COPPER \$ US 1.00 / lb

EXCHANGE RATE

\$ C 1.00 = \$ US 0.81

SMELTER TERMS

JAPANESE SMELTER SCHEDULE

TREATMENT AND REFINING

COPPER \$ US 0.25 / lb

GOLD \$ US 7.00 / oz

CONCENTRATE

TRANSPORTATION COST

\$ 65 / ton

OPERATING COST

MINING \$ 0.60 / ton BROKEN

MILLING \$ 2.15 / ton MILLED

G + A \$ 0.40 / ton MILLED

TASEKO MINES LIMITED

FISH LAKE GOLD - COPPER PROJECT

MINE MODEL

MILLING RATE (tons/day)	66,000
MILLING RATE (tons/year)	22,090,000
MINE LIFE (years)	20
PROJECT CAPITAL COSTS (C\$)	400,000,000
WASTE / ORE	0.5/1 - 1.3/1
MINE SITE COSTS (C\$/ton)	3.50 - 4.00
PROJECT PAYBACK (years)	4

PROJECTED ANNUAL OPERATIONS

	A N N U A L		A V E R A G E
	<u>YEARS 1-4</u>	<u>YEARS 5-20</u>	<u>YEARS 1-20</u>
GOLD FEED GRADE (oz/ton)	0.014	0.012	0.012
COPPER FEED GRADE (%)	0.24	0.22	0.22
GOLD RECOVERY (%)	74.3	72.3	72.7
COPPER RECOVERY (%)	90.3	88.8	89.1
GOLD PRODUCTION (oz)	231,200	192,700	200,400
COPPER PRODUCTION (lb)	96,304,000	86,776,000	88,682,000
GOLD PRODUCTION COST (US \$/oz)	220	267	258
COPPER PRODUCTION COST (US \$/lb)	0.54	0.65	0.63
GOLD PRODUCTION COST (US \$/oz) (NET OF COPPER REVENUE)	51	138	121

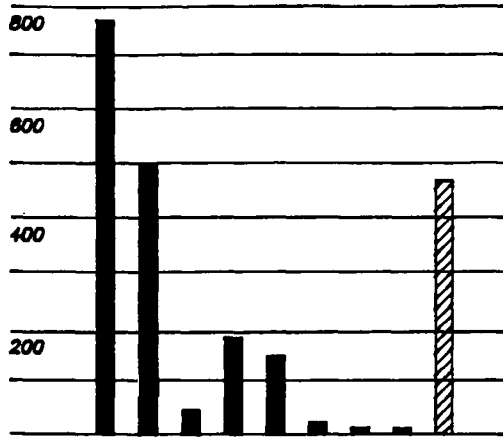
TASEKO MINES LIMITED

FISH LAKE - MT. MILLIGAN COMPARISON

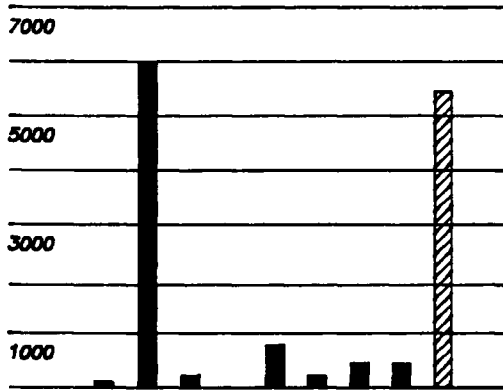
M I N E A B L E A N D D I L U T E D O R E R E S E R V E S							
PROJECT	CUTOFF GRADE EQUIVALENT Cu %	TONS	Cu %	Au opt	Cu EQUIV. %	Au CONTAINED ounces	<u>WASTE</u> ORE
FISH LAKE	0.2	527,530,000	0.20	0.011	0.50	5,894,000	0.7 / 1
	0.3	450,172,000	0.21	0.012	0.54	5,253,000	1.0 / 1
	0.4	362,527,000	0.23	0.013	0.60	4,653,000	1.5 / 1
MT. MILLIGAN	0.2	550,329,000	0.18	0.011	0.50	6,040,000	0.6 / 1
	0.3	450,225,000	0.19	0.013	0.55	5,840,000	0.9 / 1
	0.4	330,508,000	0.22	0.016	0.67	5,280,000	1.6 / 1

TASEKO MINES LIMITED

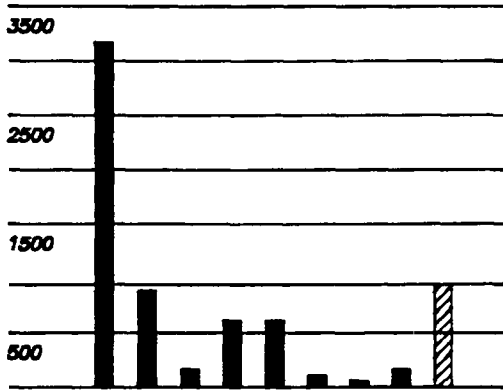
Reserves
(million tonnes)



Gold Content of Reserves
(thousand ounces)



Copper Content of Reserves
(thousand tonnes)

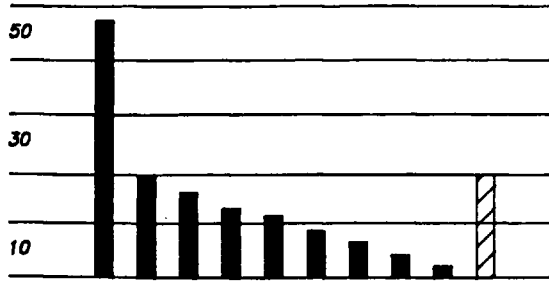


Highland Valley
Mt. Milligan
Island
Gibraltar
Similco
Bell
Equity
Afton
FISH LAKE

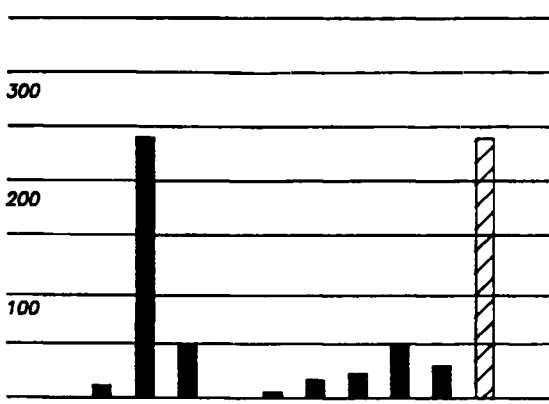
British Columbia
Open Pit Mines

TASEKO MINES LIMITED

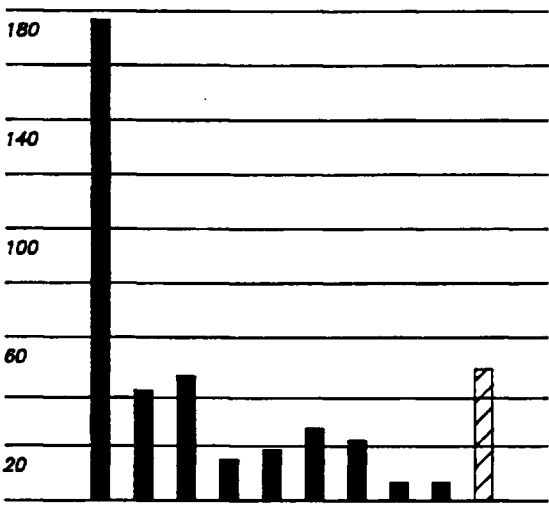
Milling Capacity
(million ounces/year)



Gold production
(thousand ounces/year)



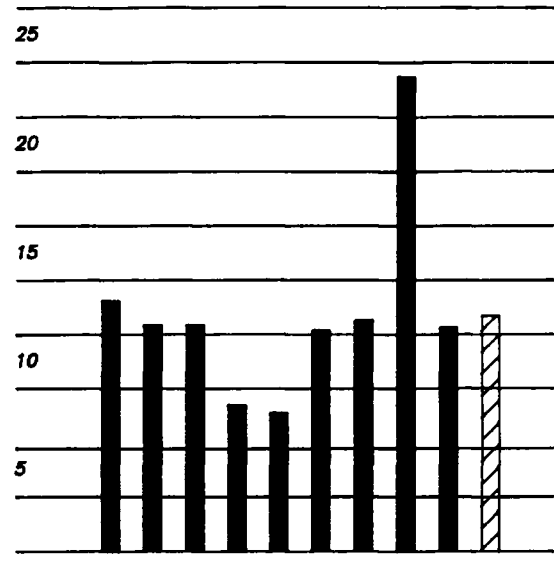
Copper Production
(thousand tonnes/year)



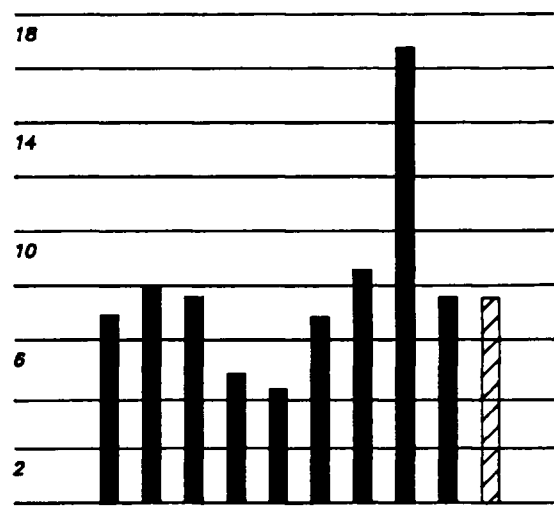
Highland Valley
Mt. Milligan
Island
Gibraltar
Brenda
Similco
Bell
Equity
Afton
Fish Lake

British Columbia
Open Pit Mines

Gross Metal Value
(C\$/tonne)



Net Smelter Return
(C\$/tonne)



Highland Valley
Mt. Milligan
Island
Gibraltar
Brenda
Similco
Bell
Equity
Afton
Fish Lake

British Columbia
Open Pit Mines

TASEKO MINES LIMITED