

860831

Kint Drill holes

Hole	North	East	Elev	Azim	Dip	Length
90-1	39+00	26+75		270	-45	150
90-2	39+00	25+75		270	-45	150
90-3	39+00	24+75		270	-45	150
90-4	36+00	25+00		270	-45	150
90-5	36+00	24+00		270	-45	150
90-6	37+00	23+00		090	-45	150
90-7	38+00	27+50		270	-45	150

7000

7500

8000

8500

9000

10.500

10.000

9500

L40+00 N.

L39+00 N.

L38+00 N.

L37+00 N.

L36+00 N.

L35+00 N.

L34+00 N.

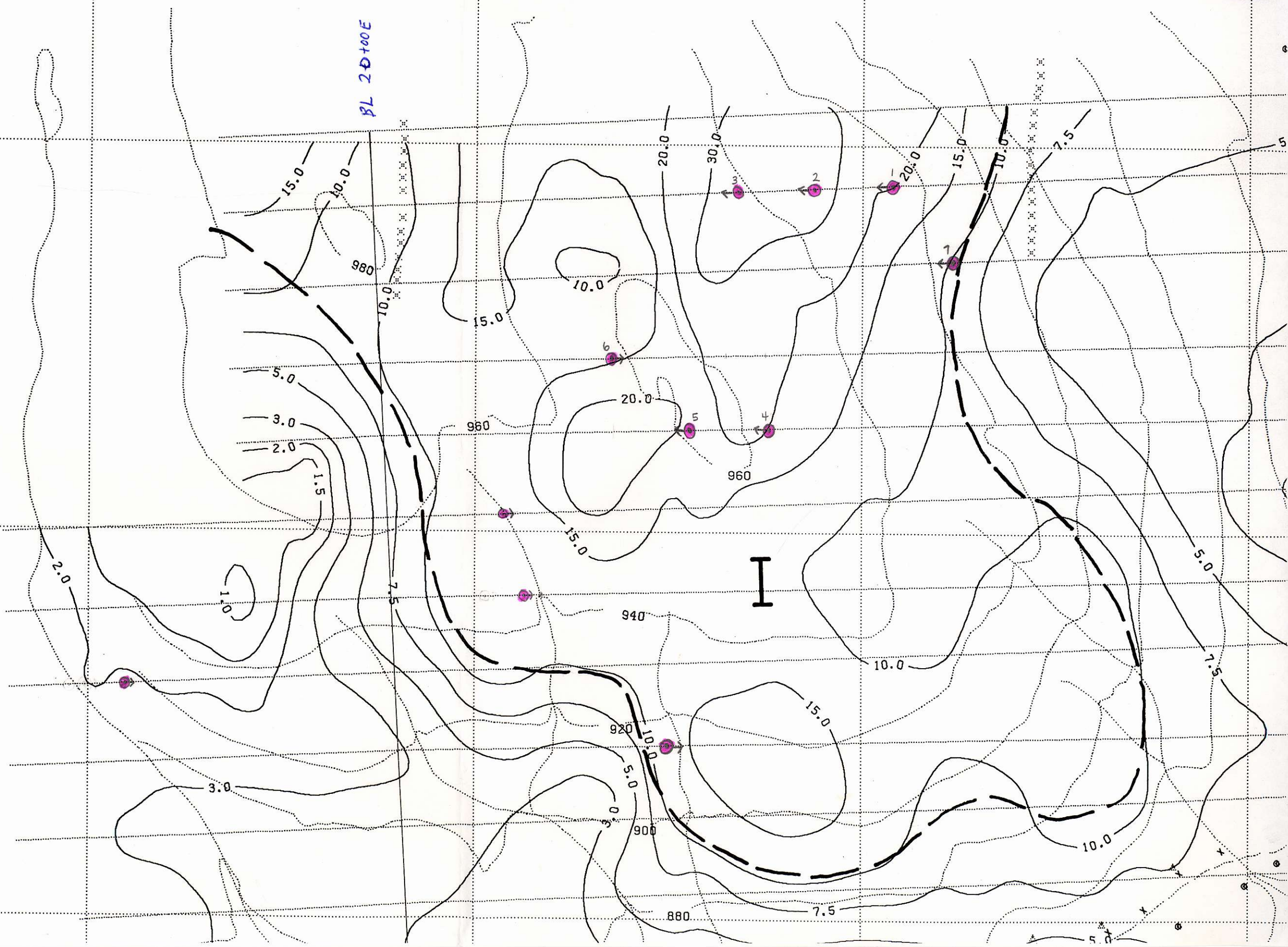
L33+00 N.

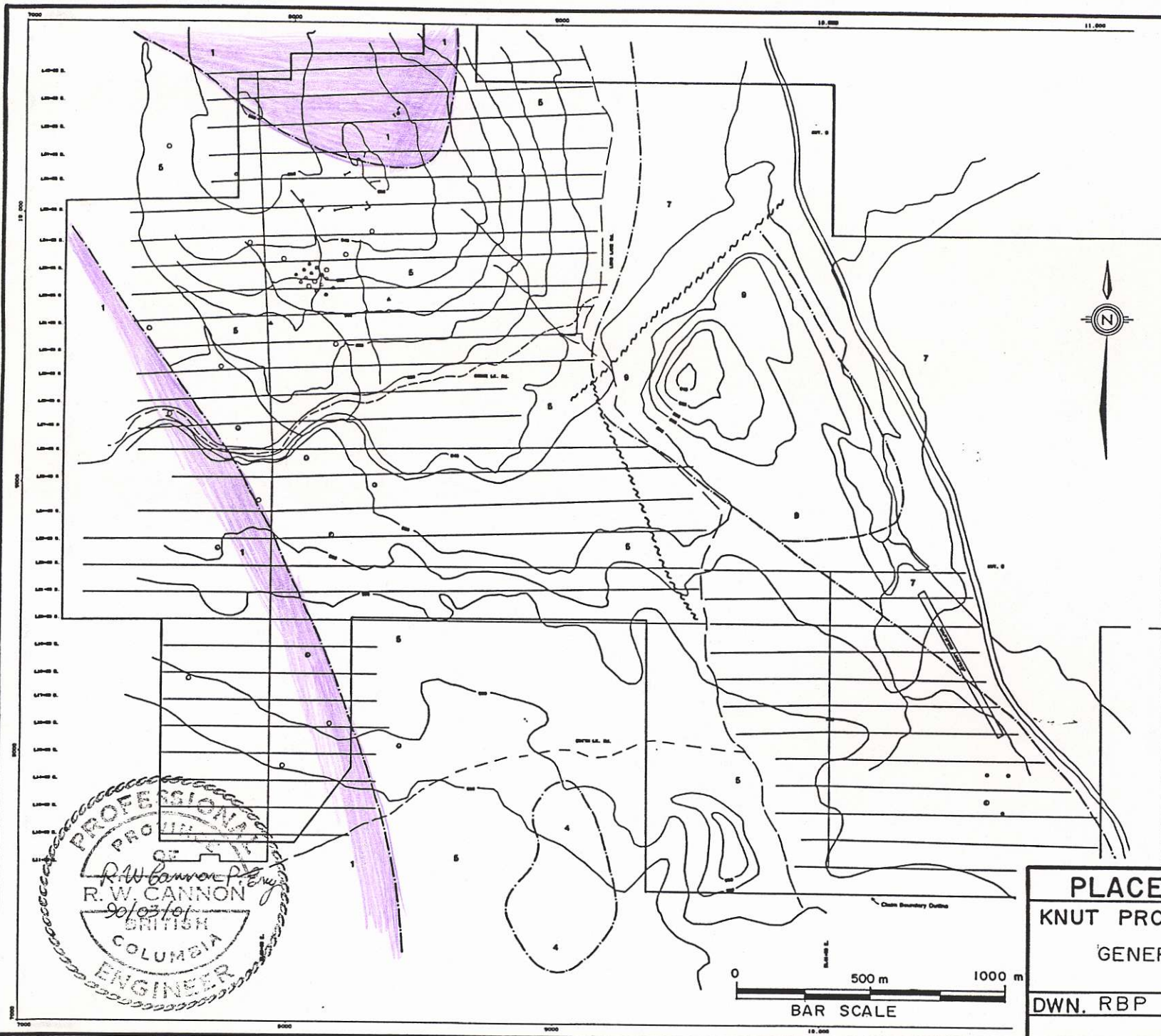
L32+00 N.

L31+00 N.

L30+00 N.

BL 20+00E





LEGEND

GENERAL GEOLOGY OF THE KNUT PROPERTY
 Compiled From Surveys (1971) and Asses (1987)

LEGEND

Bedded Rocks

Tertiary

- 9 Kantoops Group
- Basaltic Flows

Triassic

- 7 Nicola Group
- Tuff and Tuff Breccia

Intrusive Rocks

Upper Triassic - Jurassic Iron Mask Batholith

- 5 Cherry Creek Unit
Diorite to Syenite,
Mainly Diorite,
Porphyritic, Fine
grained.
- 4 Sugarloaf Unit
Diorite to Andesite,
Porphyritic.
- 1 Iron Mask Hybrid
Diorite and Gabbro
Clasts in Dioritic
Matrix.

- Strategic Contact
 - ~ ~ ~ Fault
 - Diamond Drill Hole
 - △ Primary DTH Hole
 - Porphyritic DTH Hole
 - - - - - Trench
- Locations not surveyed

DATA PLotted ON THIS MAP:
 SEE FILES
 FILE LINC 04/70/19.310

PROFESSIONAL
 OF
 R. W. CANNON
 90/03/01
 BRITISH
 COLUMBIA
 ENGINEER

PLACER DOME INC.	
KNUT PROJECT - KAMLOOPS	
GENERAL GEOLOGY	
DWN. RBP	DATE : FEB./90
	FIGURE NO. 4

