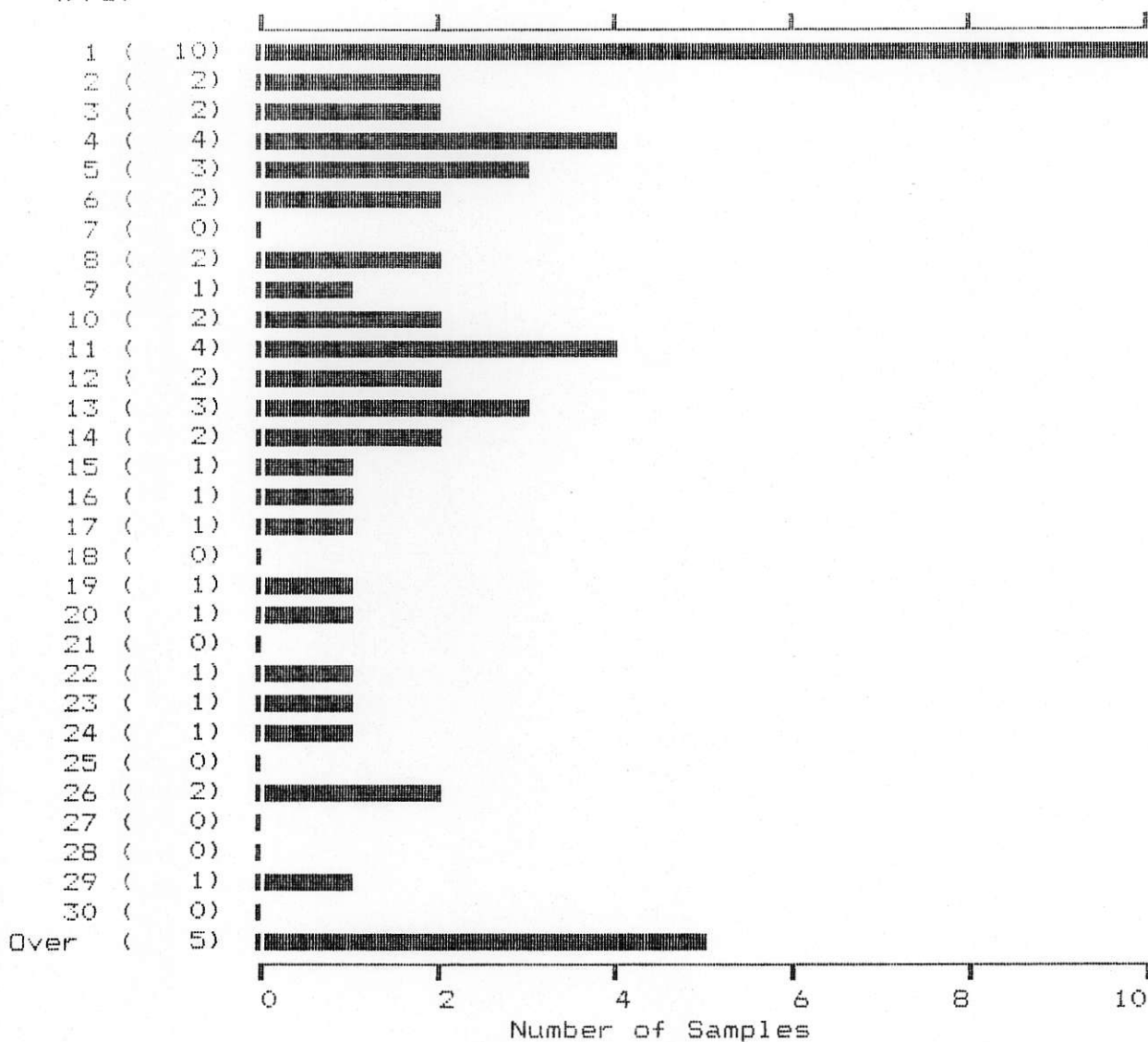


C. E. C. ENGINEERING

---

AU\*  
(FPB)



55 Samples

Maximum: 89

Mean: 13

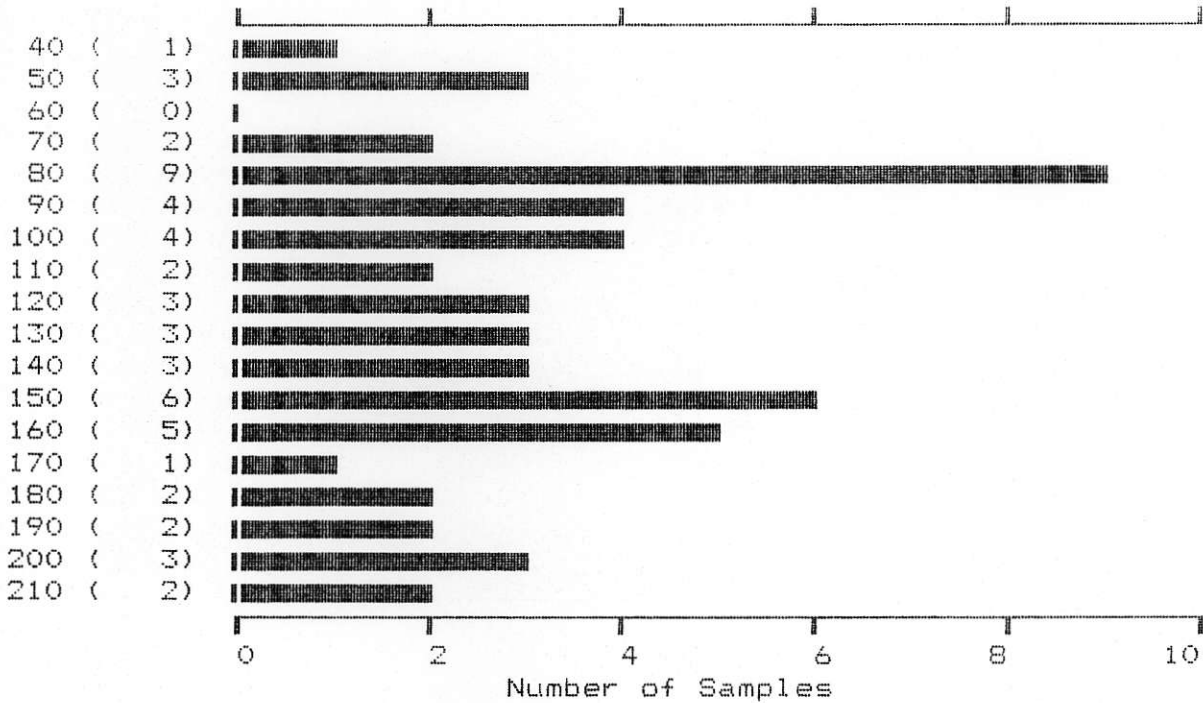
Minimum: 1

Standard Deviation: 15

# C. E. C. ENGINEERING

---

SR  
(FFM)



55 Samples

Maximum: 205

Mean: 120

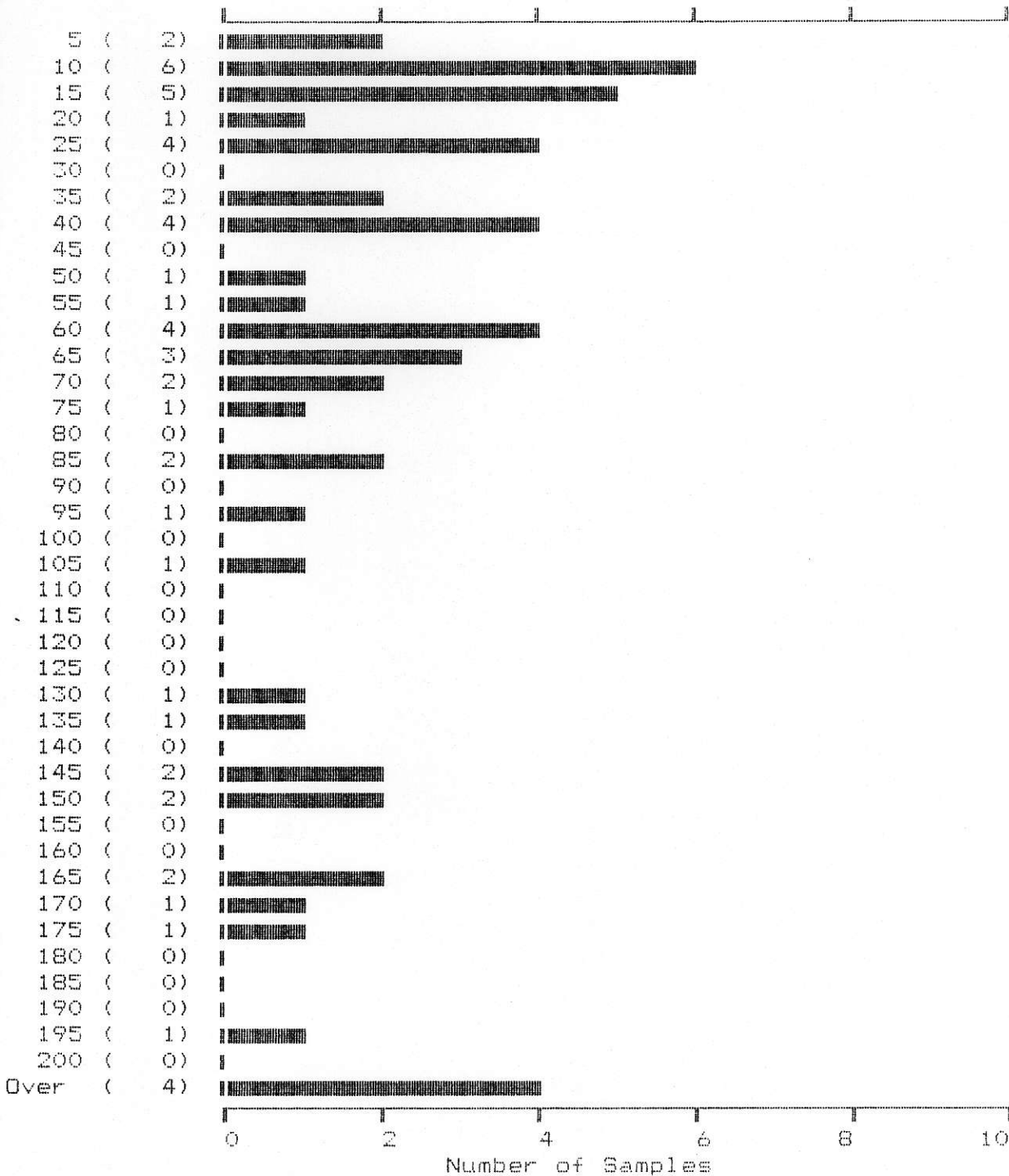
Minimum: 36

Standard Deviation: 45

# C. E. C. ENGINEERING

---

AS  
(FPM)



55 Samples

Maximum: 286  
Minimum: 2

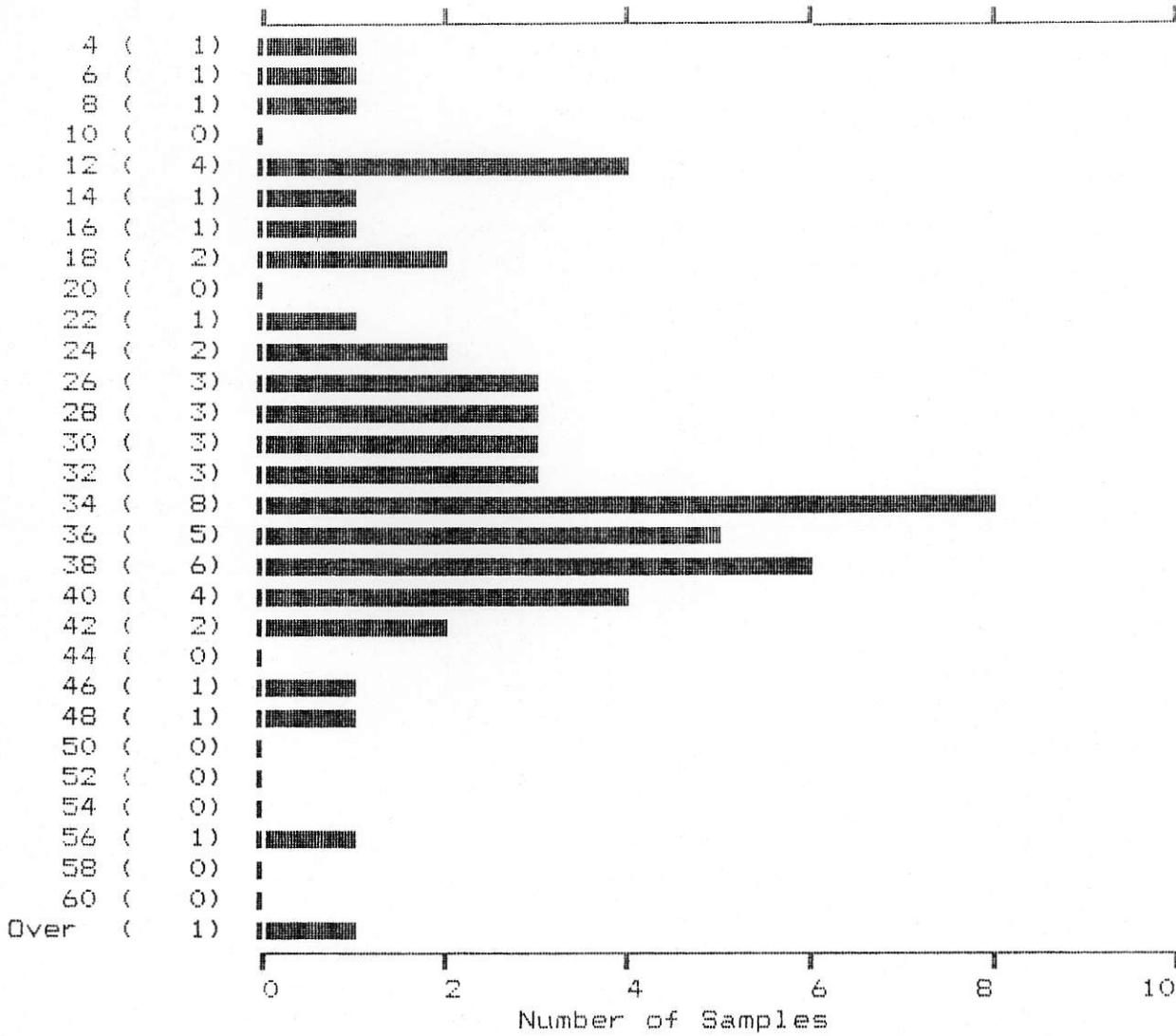
Mean:  
Standard Deviation:

76  
69

# C. E. C. ENGINEERING

---

CO  
(PPM)



55 Samples

Maximum: 67  
Minimum: 4

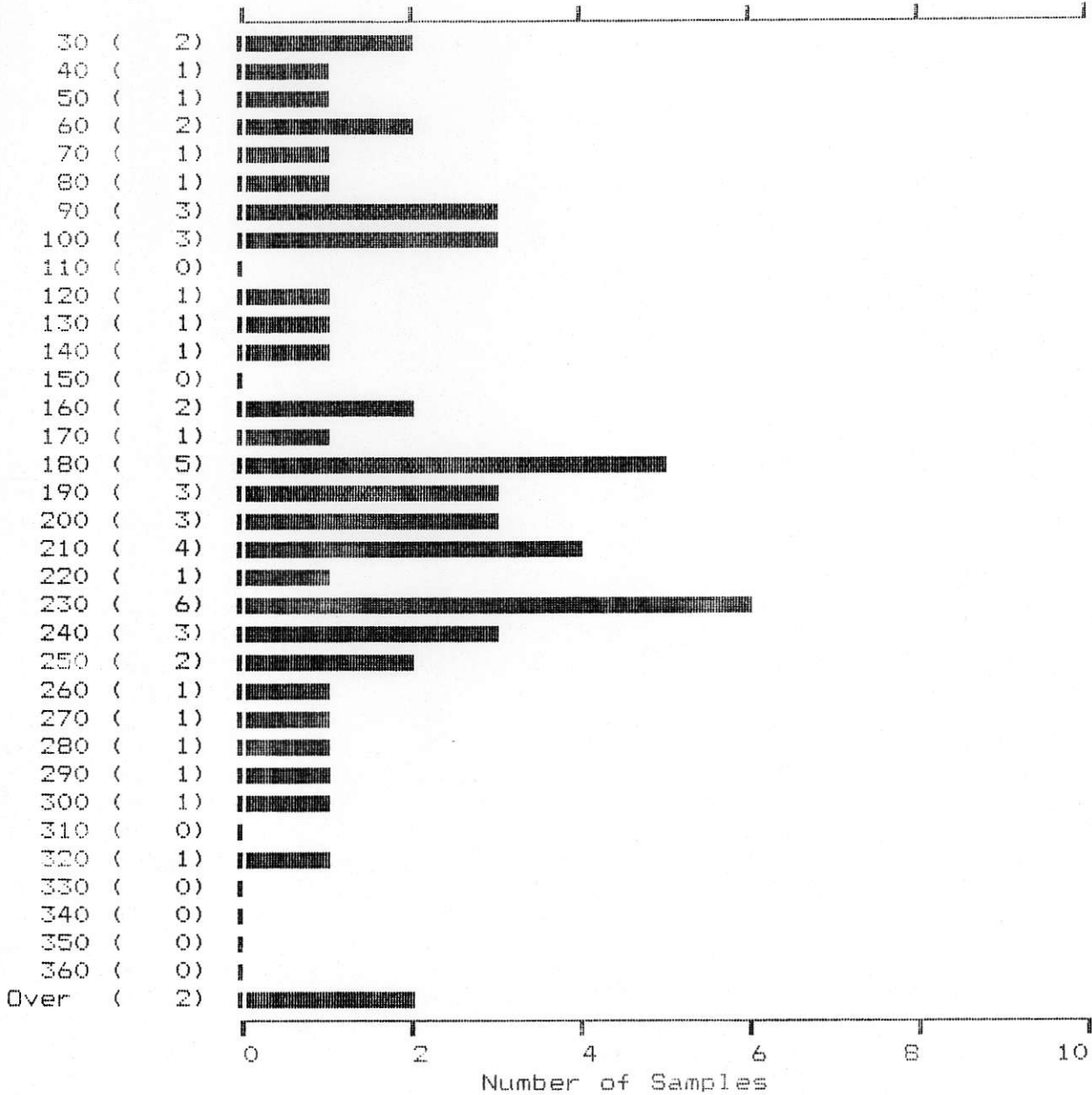
Mean:  
Standard Deviation:

30  
12

# C. E. C. ENGINEERING

---

NI  
(PFM)



55 Samples

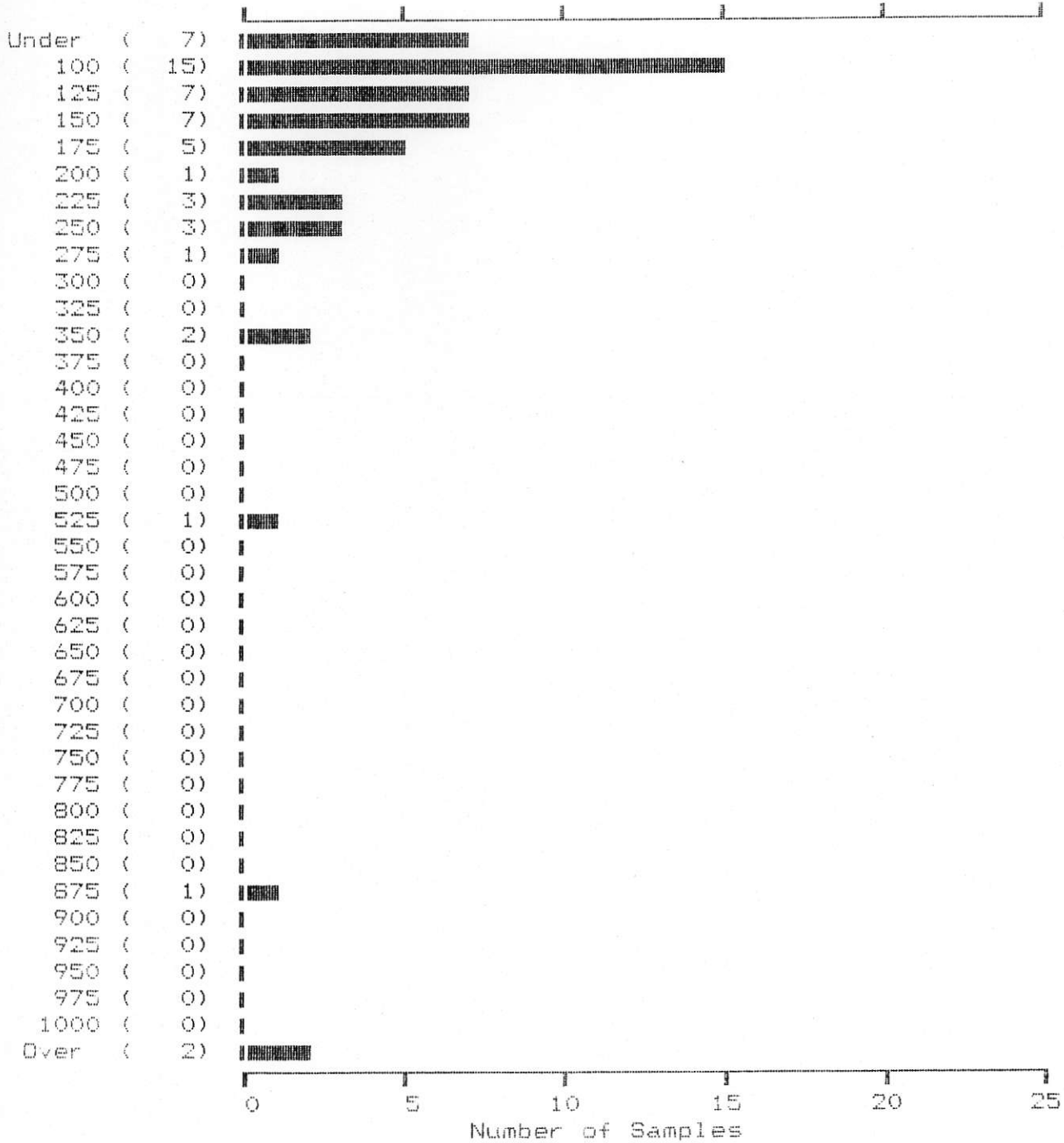
Maximum: 788  
Minimum: 24

Mean: 186  
Standard Deviation: 113

# C. E. C. ENGINEERING

---

ZN  
(PPM)



55 Samples

Maximum: 7252

Mean: 357

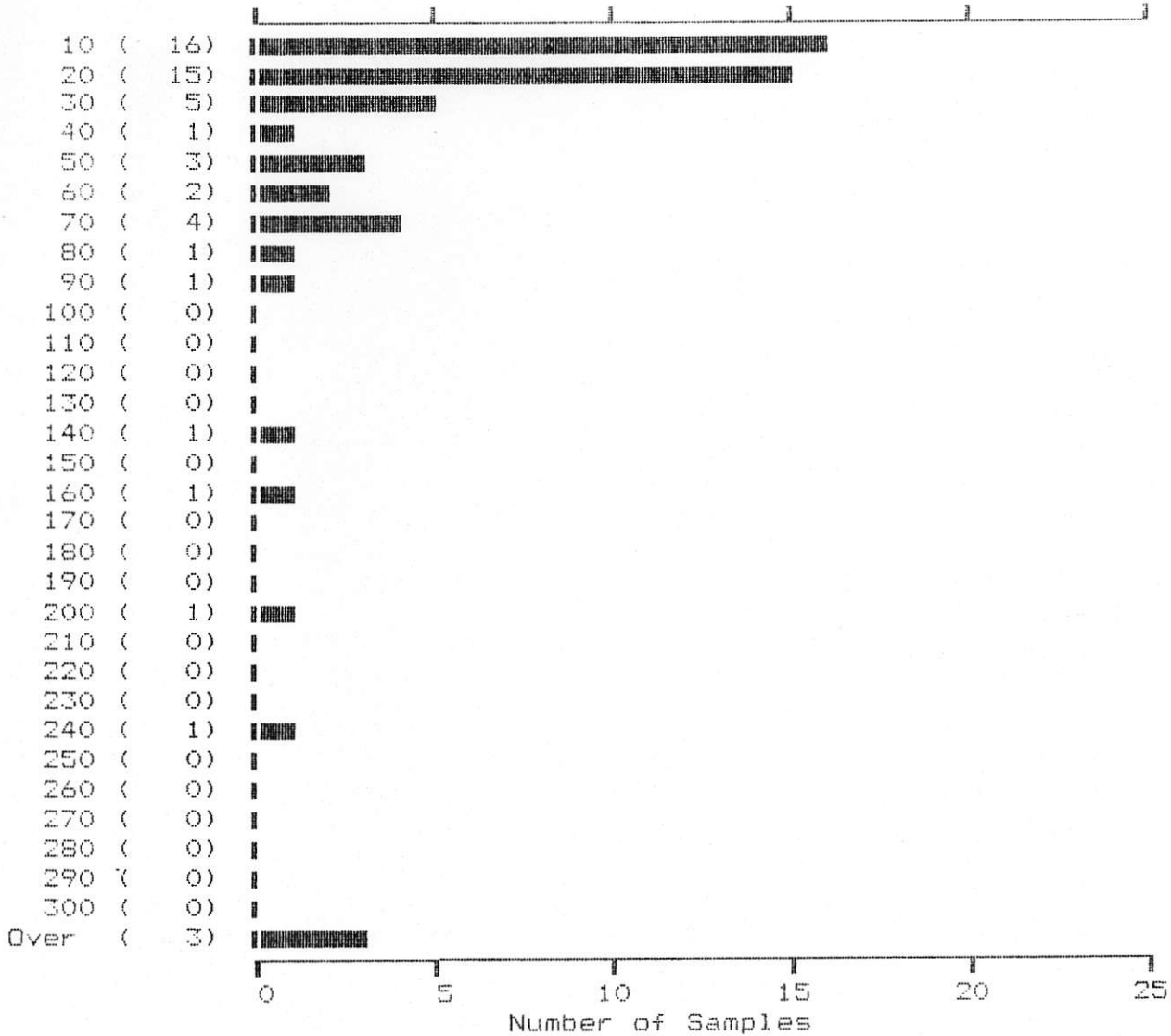
Minimum: 52

Standard Deviation: 1089

# C. E. C. ENGINEERING

---

FB  
(PFM)

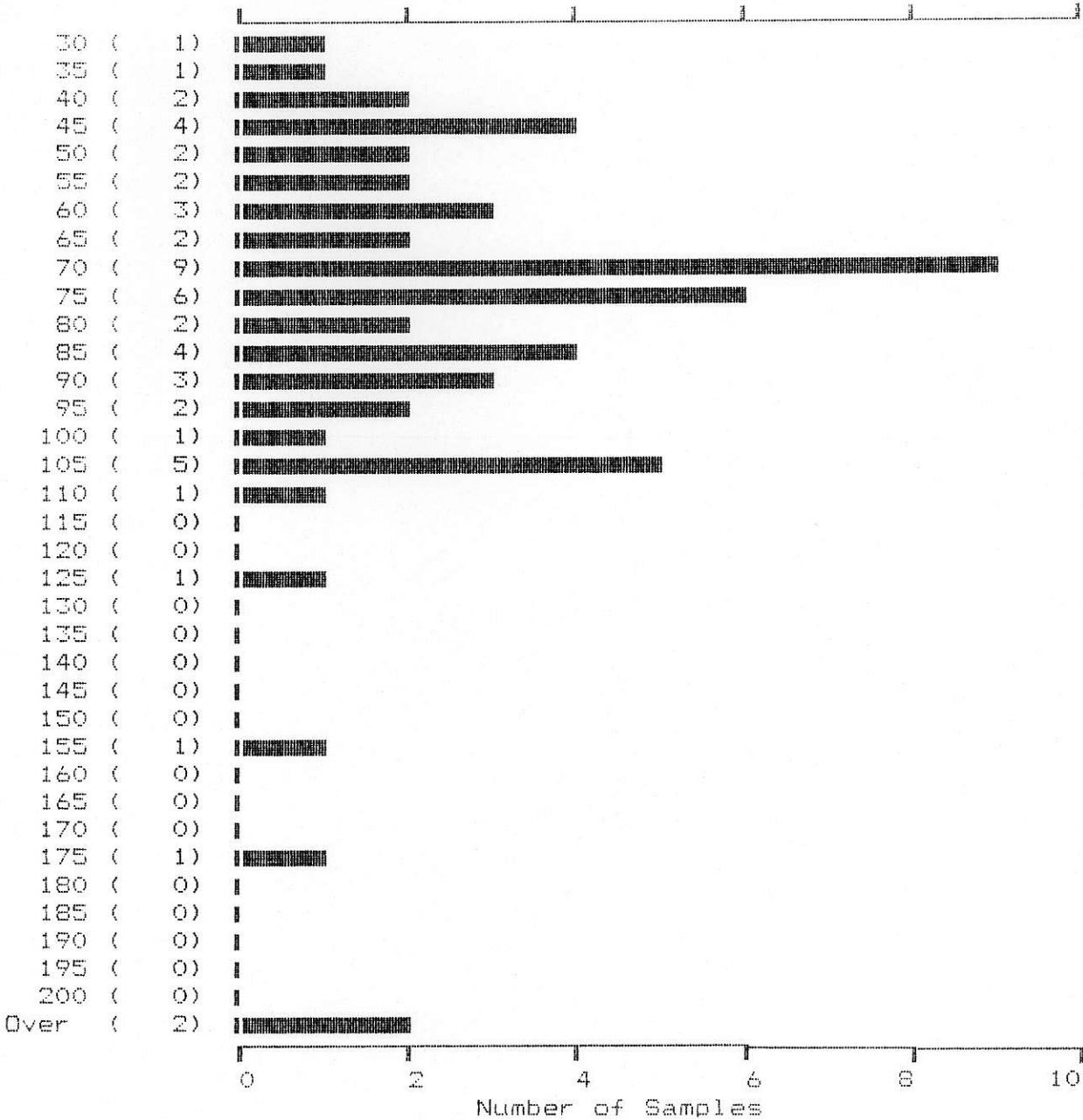


55 Samples	Maximum: 4567	Mean: 132	
	Minimum: 5	Standard Deviation: 609	

# C. E. C. ENGINEERING

---

CU  
(FFM)



55 Samples

Maximum: 316  
Minimum: 26

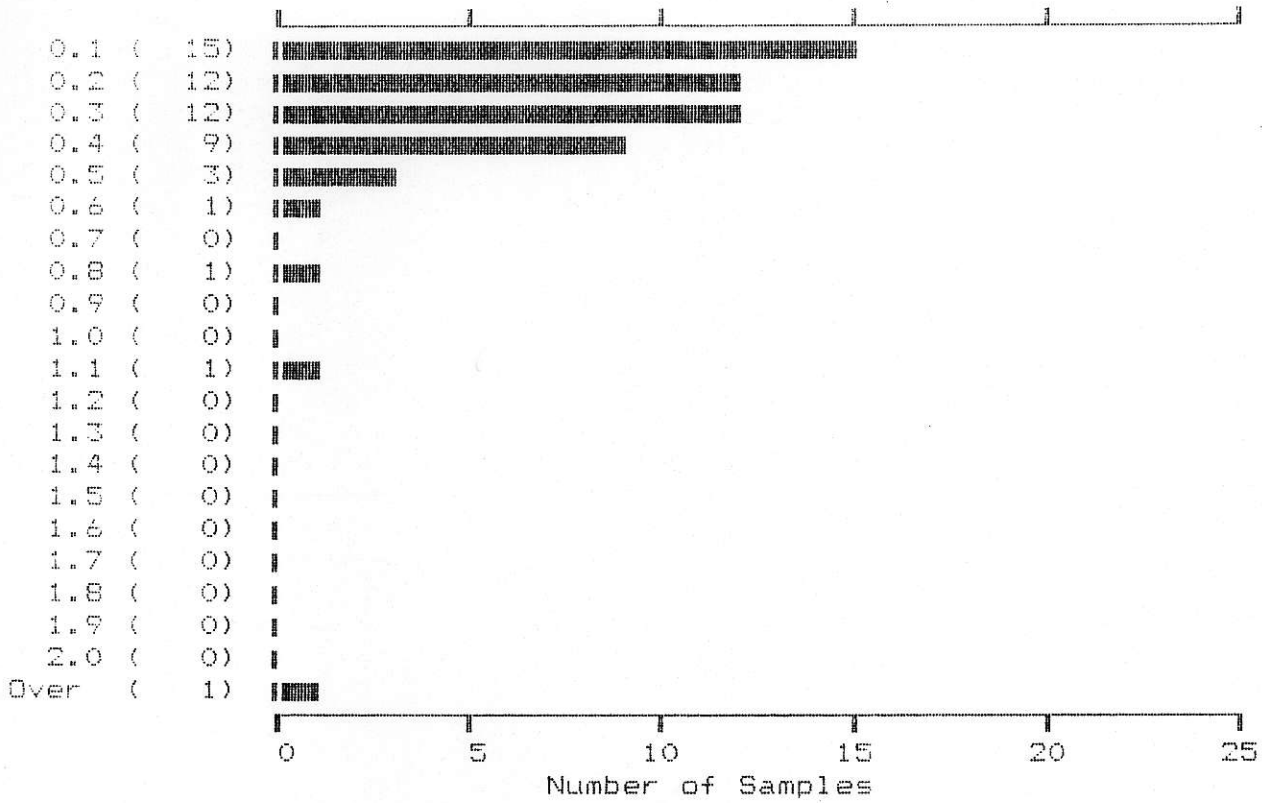
Mean: 82  
Standard Deviation: 46



C. E. C. ENGINEERING

---

AG  
(FFM)

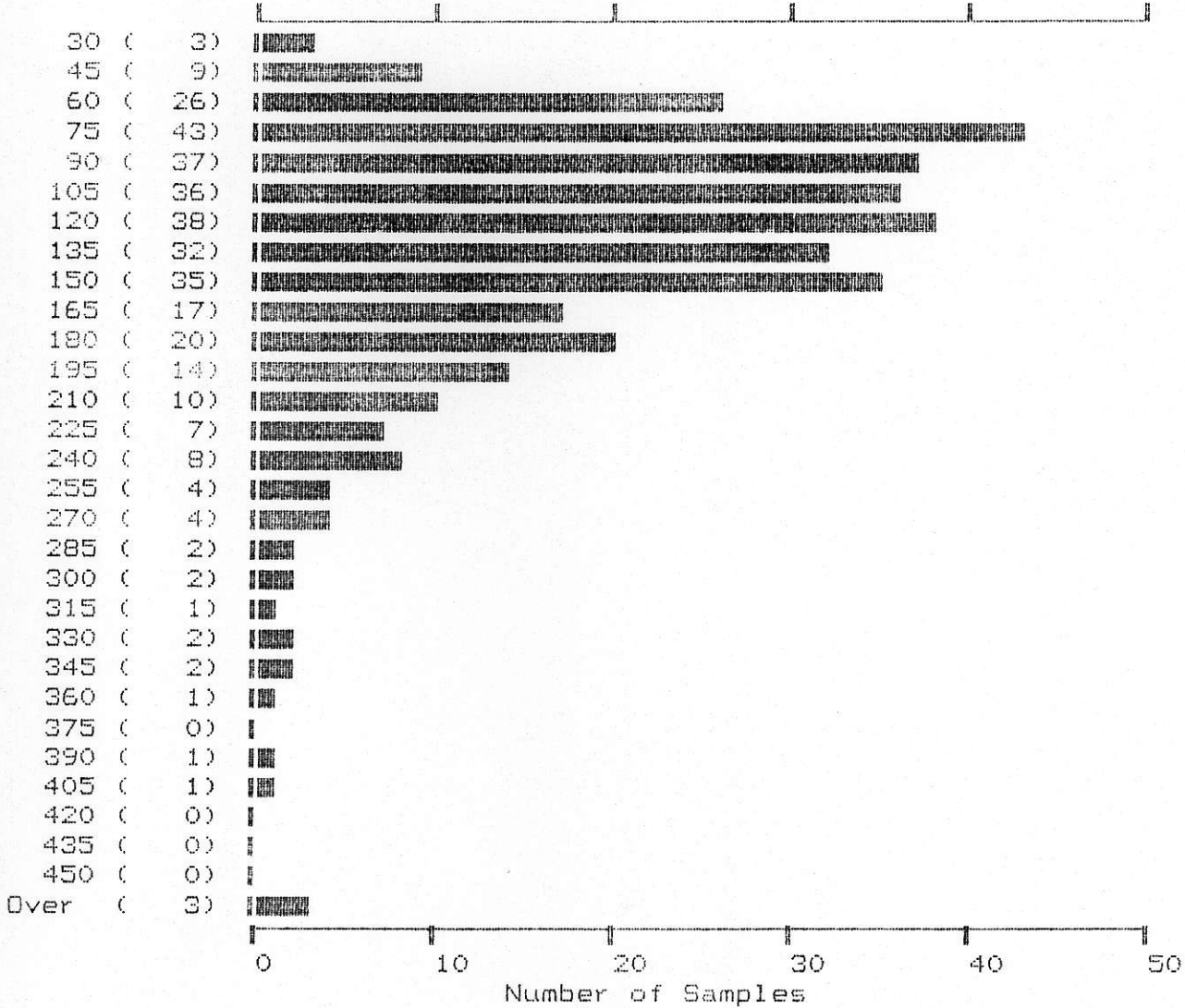


55 Samples      Maximum:      2.8      Mean:      0.3  
 Minimum:      0.1      Standard Deviation:      0.4

TWIN SOILS

C. E. C. ENGINEERING

BA  
(PPM)

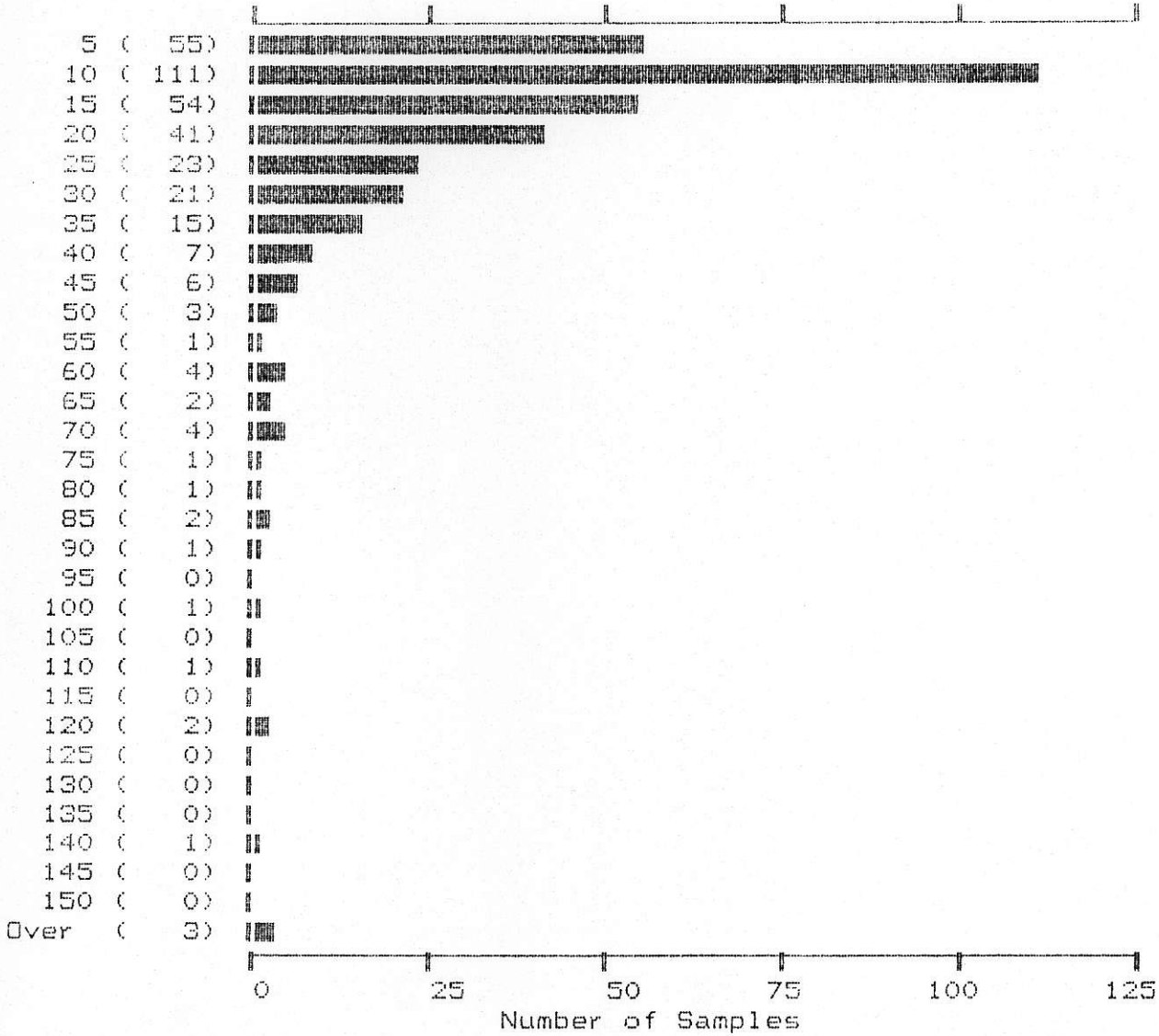


361 Samples      Maximum: 528      Mean: 142  
Minimum: 22      Standard Deviation: 72

# C. E. C. ENGINEERING

---

SR  
(PPM)

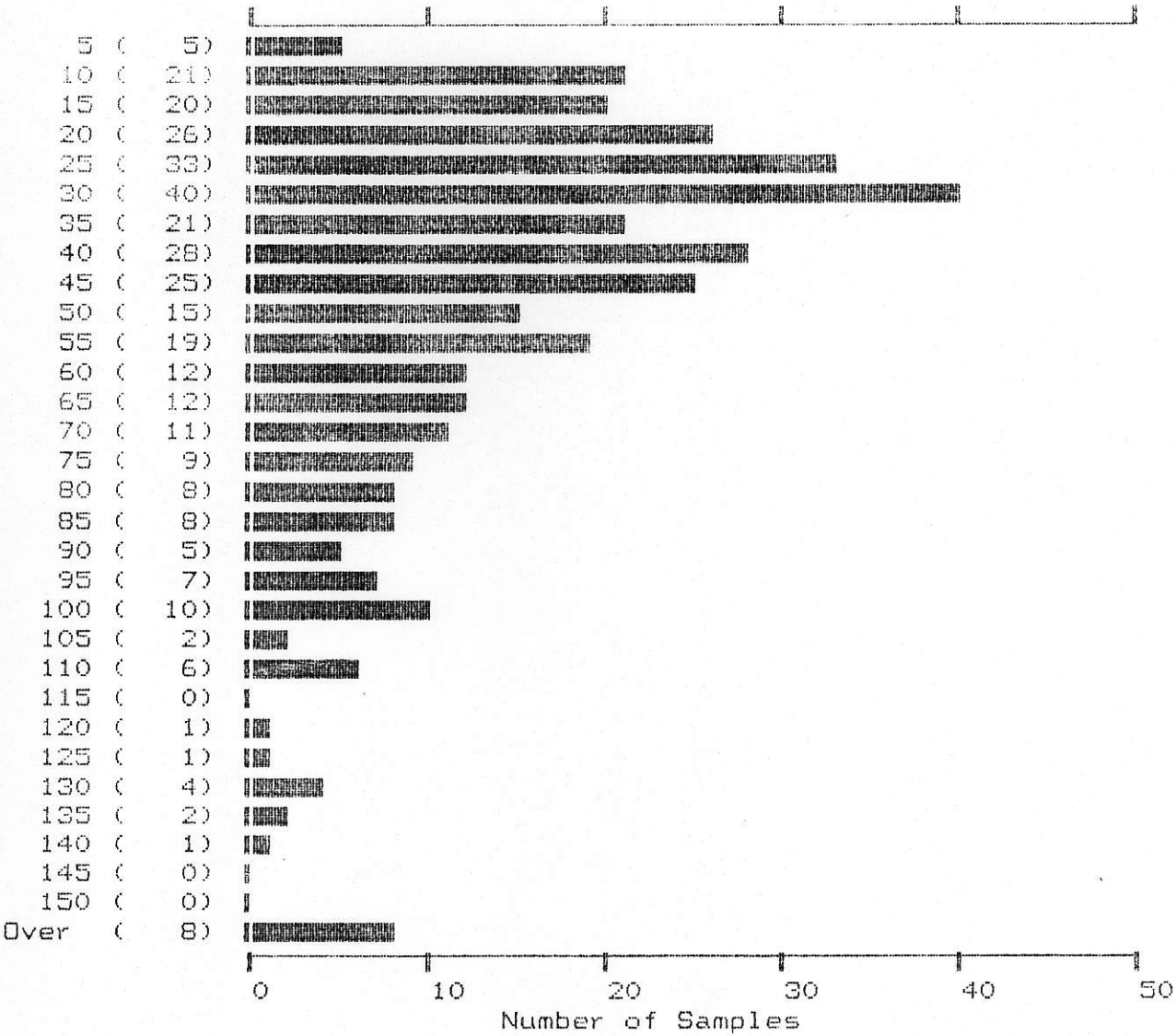


361 Samples	Maximum: 298	Mean: 24	
	Minimum: 4	Standard Deviation: 27	

# C. E. C. ENGINEERING

---

NI  
(PPM)

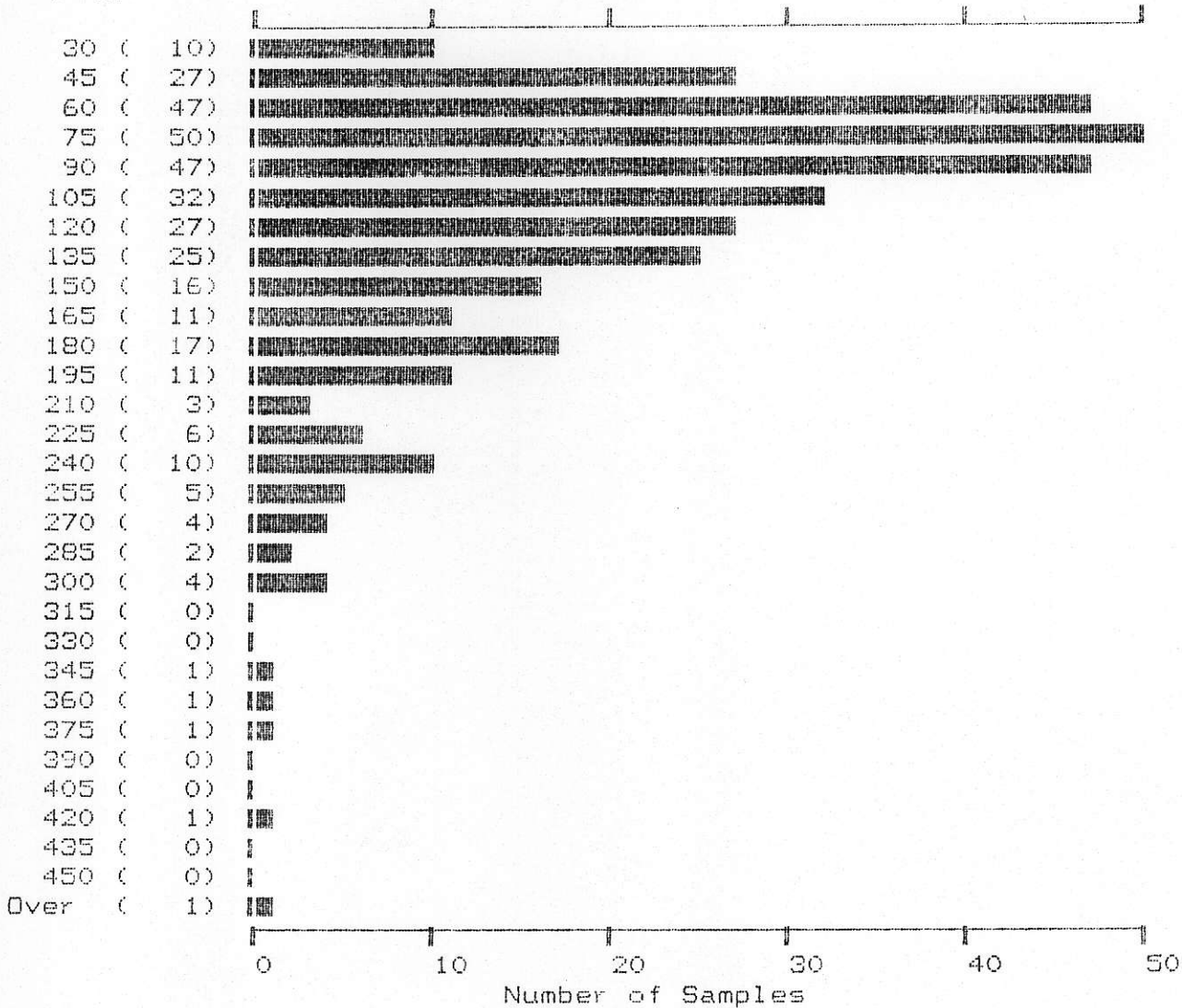


361 Samples	Maximum: 247	Mean: 51	
	Minimum: 3	Standard Deviation: 36	

C. E. C. ENGINEERING

---

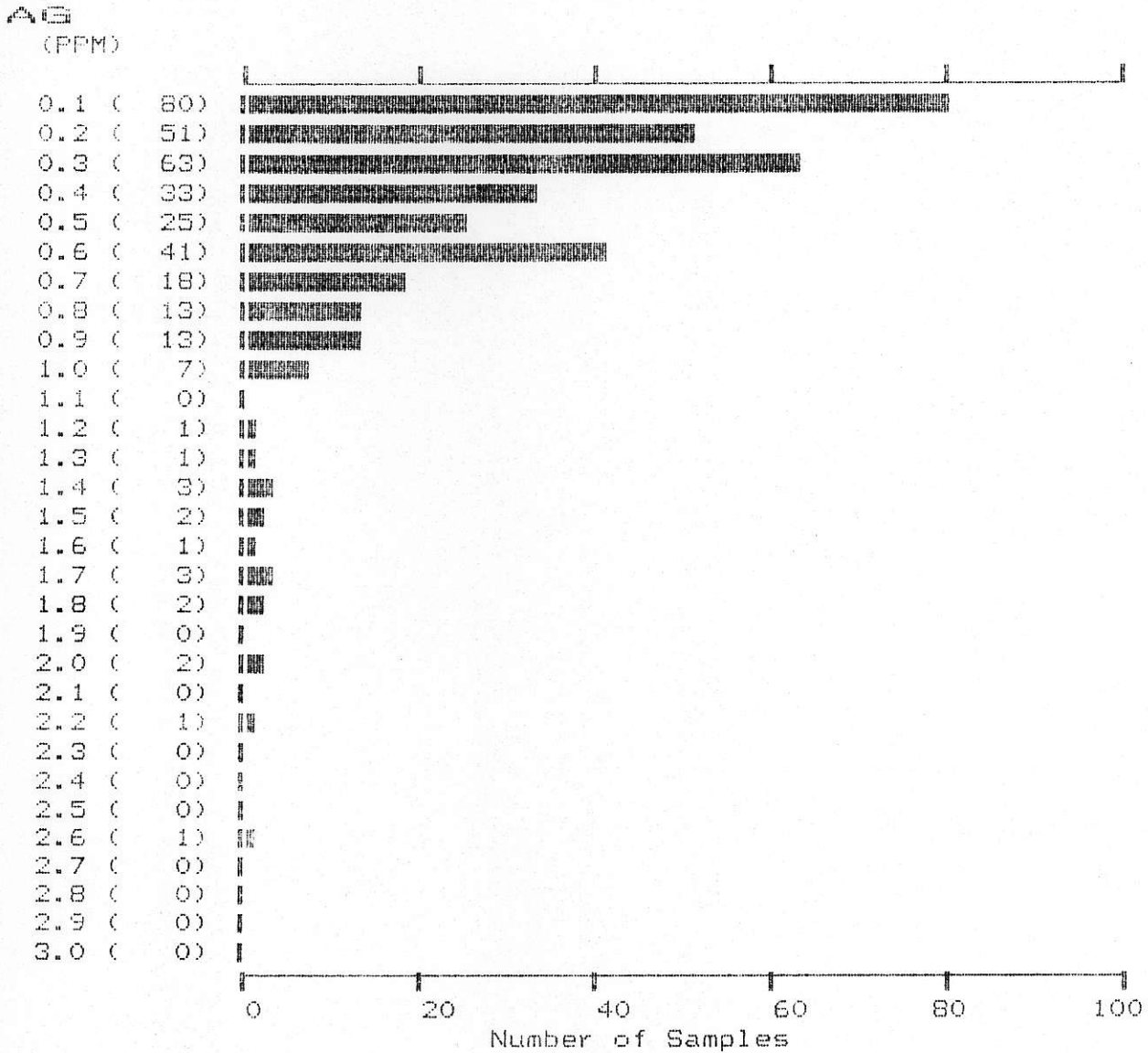
ZIN  
(PPM)



361 Samples      Maximum:      569      Mean:      124  
 Minimum:      22      Standard Deviation:      70

# C. E. C. ENGINEERING

---

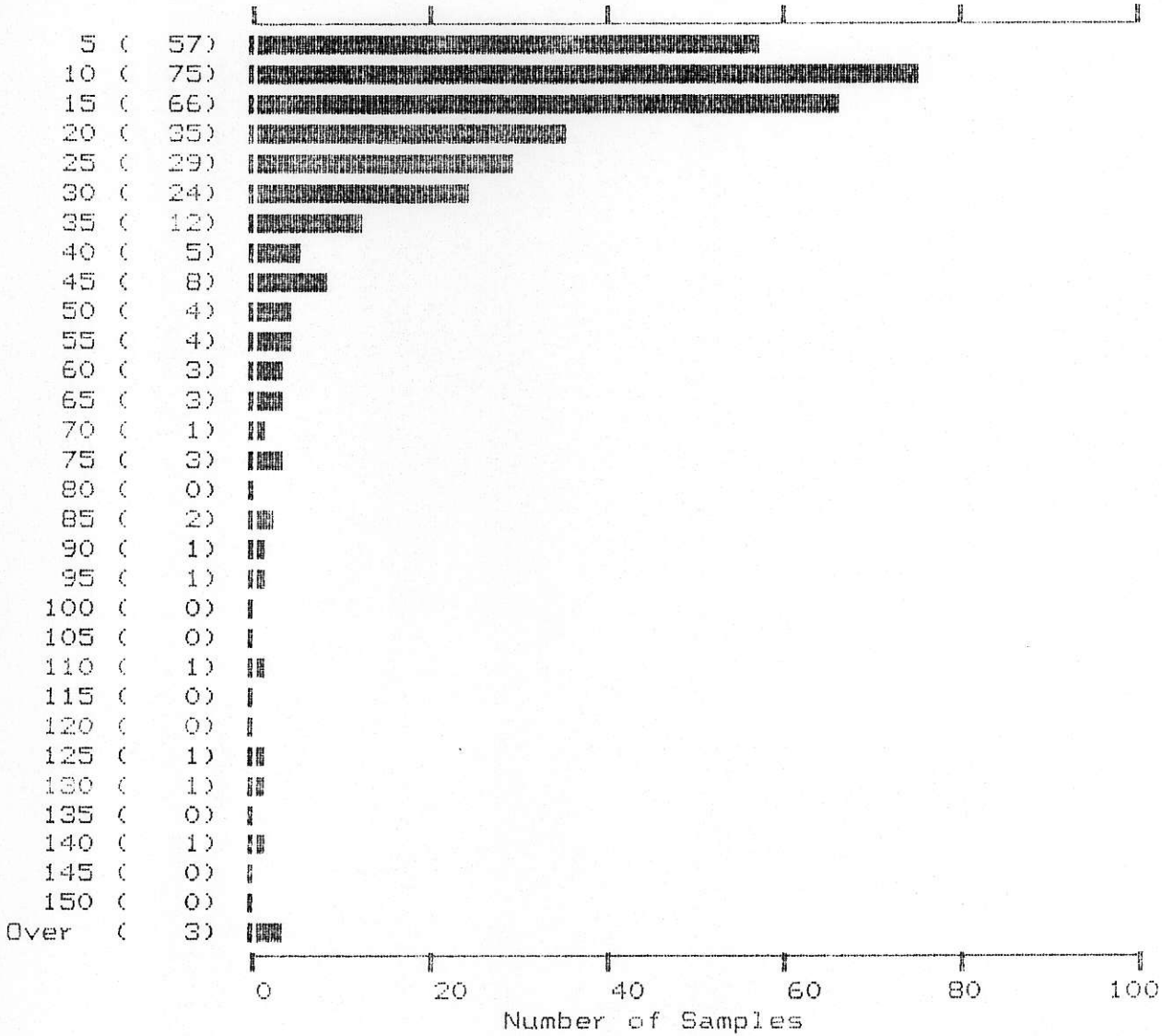


361 Samples	Maximum: 2.6	Mean: 0.4	
	Minimum: 0.1	Standard Deviation: 0.4	

# C. E. C. ENGINEERING

---

AS  
(PPM)



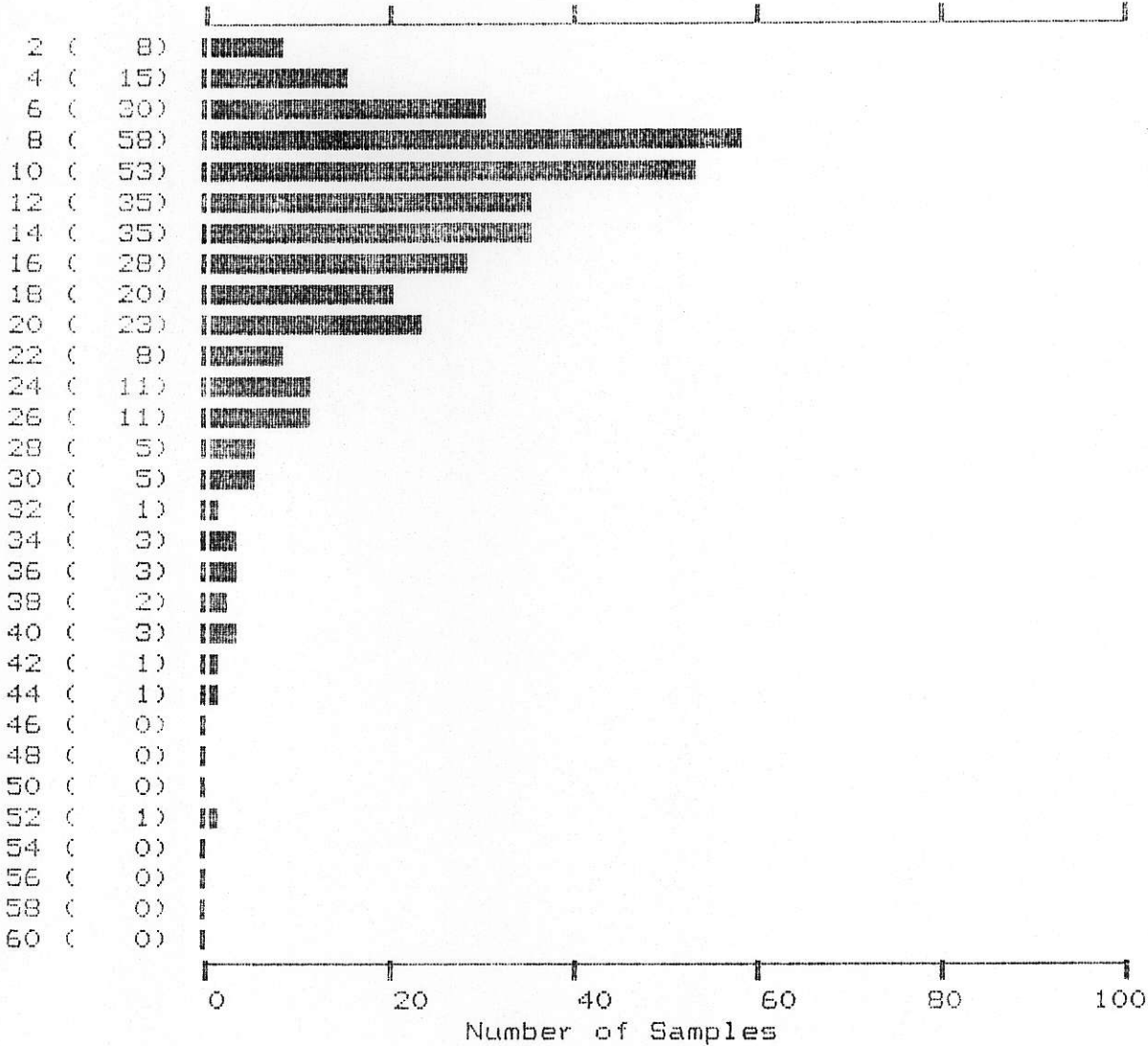
361 Samples	Maximum: 250	Mean: 23	
	Minimum: 2	Standard Deviation: 26	



# C. E. C. ENGINEERING

---

CO  
(PPM)



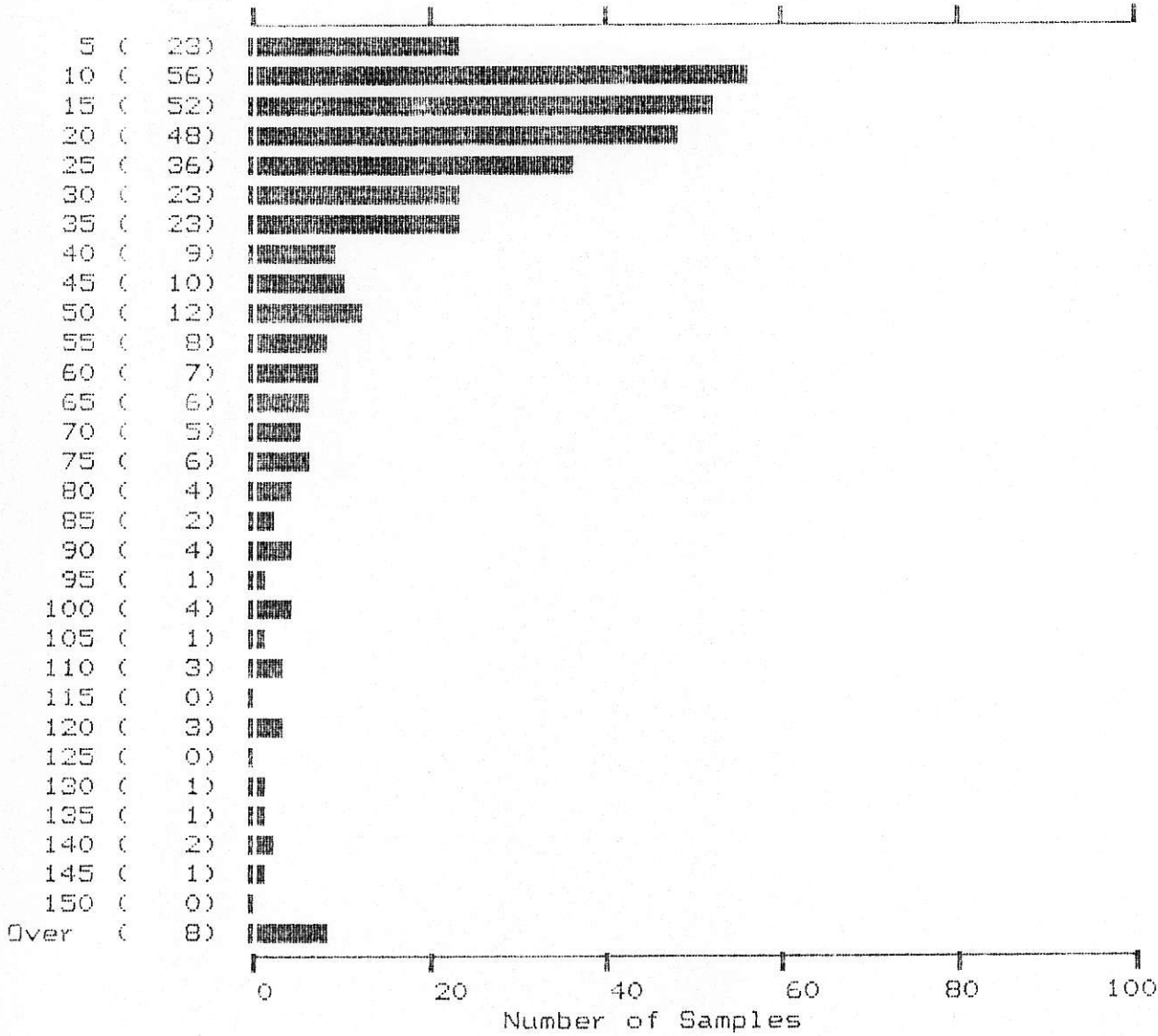
361 Samples	Maximum: 52	Mean: 14	
	Minimum: 1	Standard Deviation: 8	



C.E.C. ENGINEERING

---

PB  
(PPM)

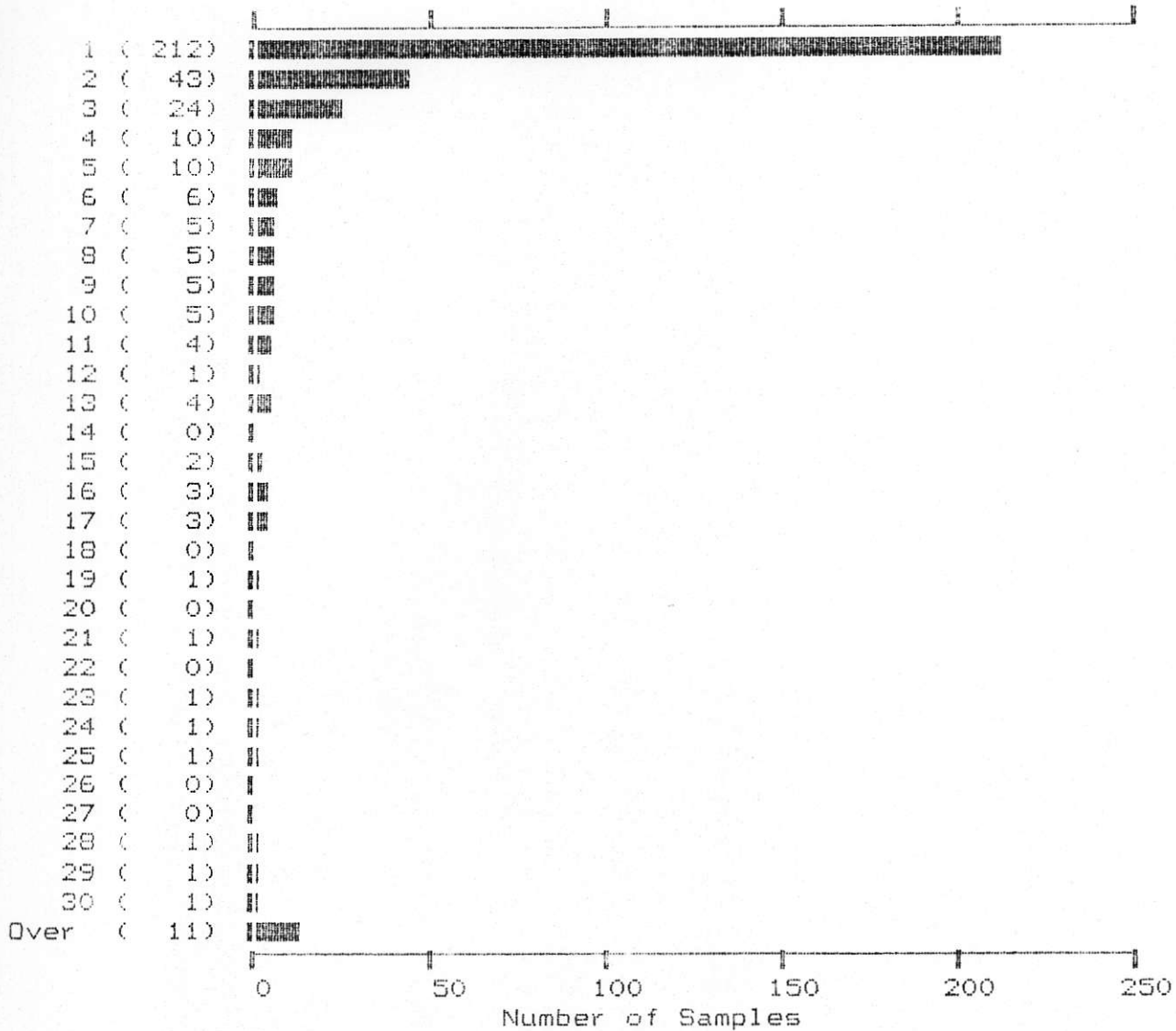


361 Samples      Maximum:      2091      Mean:      42  
 Minimum:      2      Standard Deviation:      114

# C. E. C. ENGINEERING

---

AU\*  
(FPB)

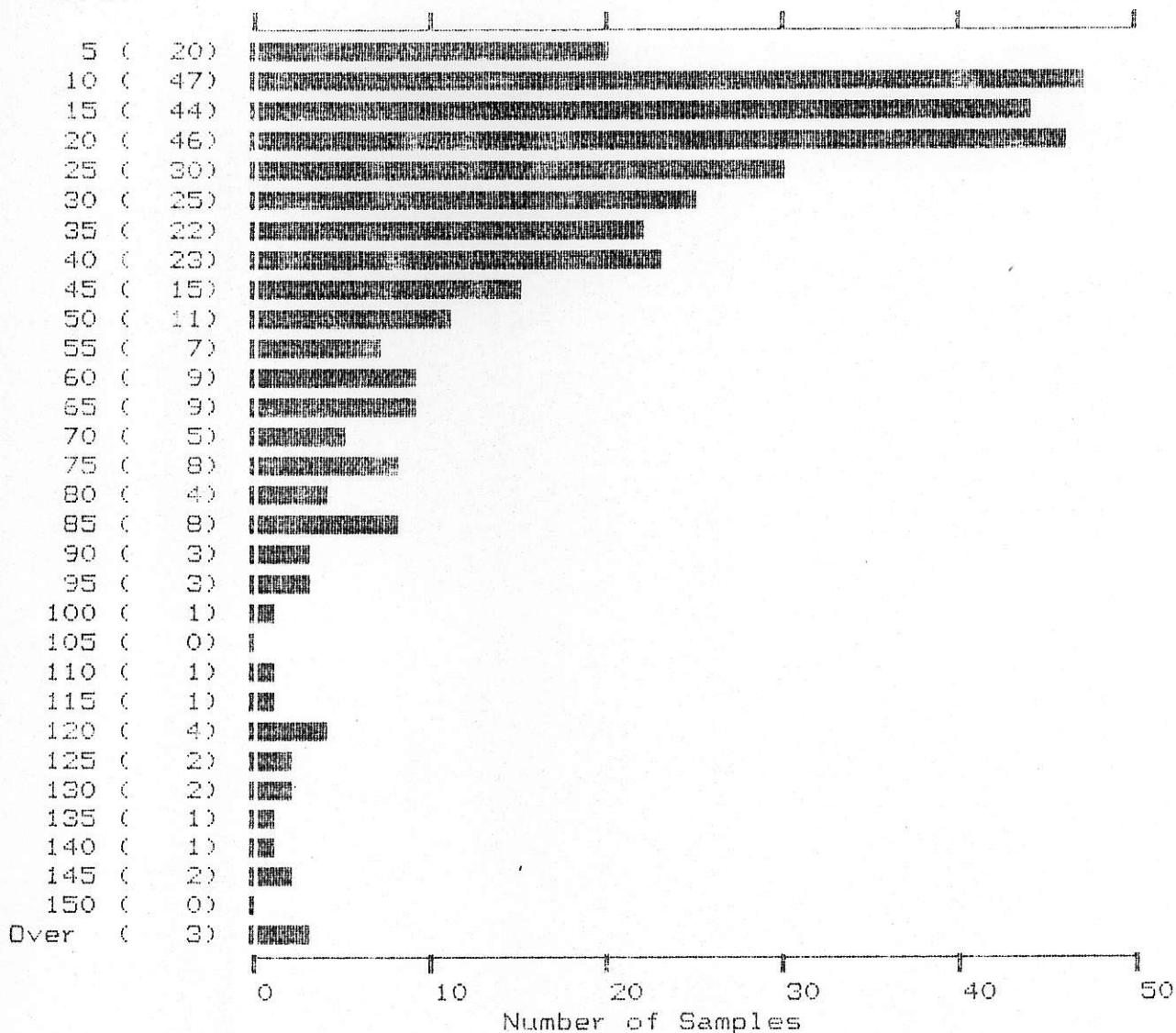


361 Samples	Maximum: 320	Mean: 6	
	Minimum: 1	Standard Deviation: 24	

# C. E. C. ENGINEERING

---

CU  
(PPM)



361 Samples	Maximum: 173	Mean: 38	38
	Minimum: 1	Standard Deviation: 31	31