

SOIL PROFILE

L. 10450N (GRAND CANYON) 55m long

W

8645E

8660E

8670E

8680E

E

8700E

A-HORIZ
0.2m

Sand
& GRAVEL
0.6m

B-HORIZ (silty, rusty-brown)
0.2m

SAND
& GRAVEL (3-4cm COBBLES)
0.6m

→ silty, rusty brown B-HORIZ,
0.5

← FERROCRETE ZONE (1.5m) →

INTENSELY
LIMONITIC
& HEMATITIC

→ TILL

containing various rounded
& angular
MX sulfide clasts
& other assorted
old volc. frags
(HBPP, FAN)

TILL

w. rounded & angular
clasts up to 6cm
& occasional limonitic

TILL

- silty-sand cement
- rounded cobbles to 15cm ϕ
- abundant angular pyritic
frags of local bedrock?
More limonitic in upper 2.5m

5.0m

greyish-brown
silty sand (clayey)

TILL
w. lim cobbles

7.7m

5.0m

Pure SAND (loose)

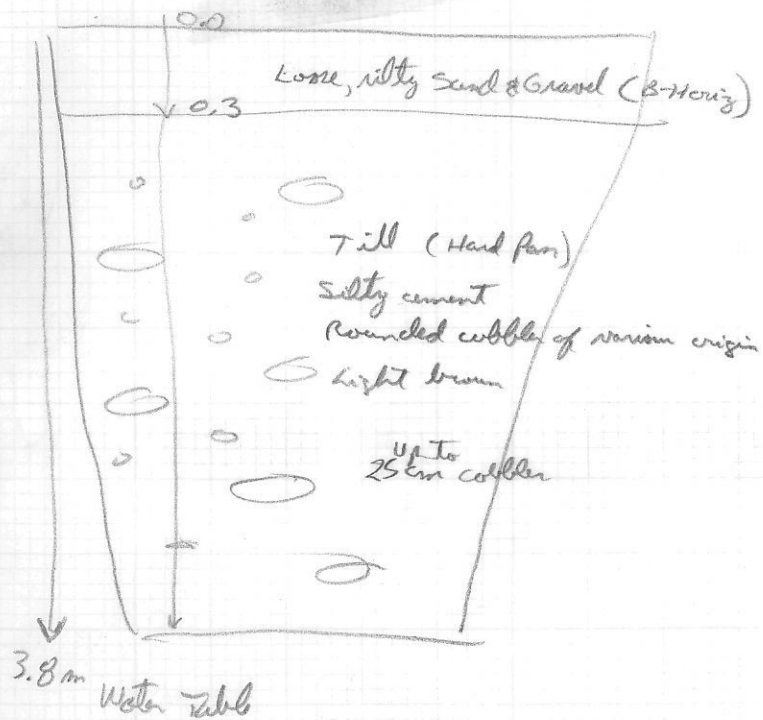
Water 0.3m
Water Table

7.0m

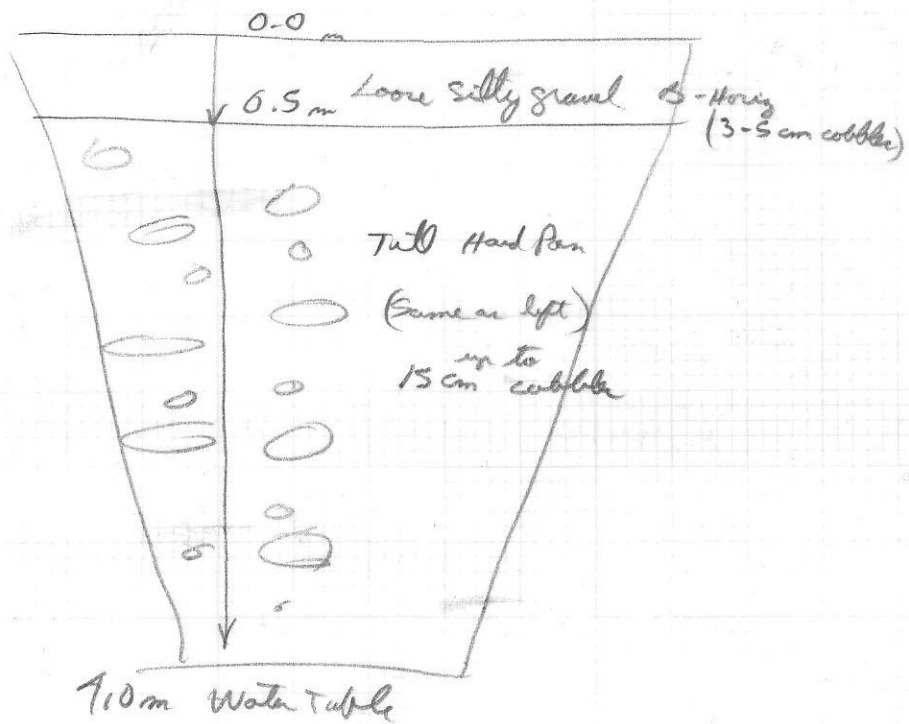
860708
windy

SOIL PROFILES

L. 10525 N



L. 10475 N



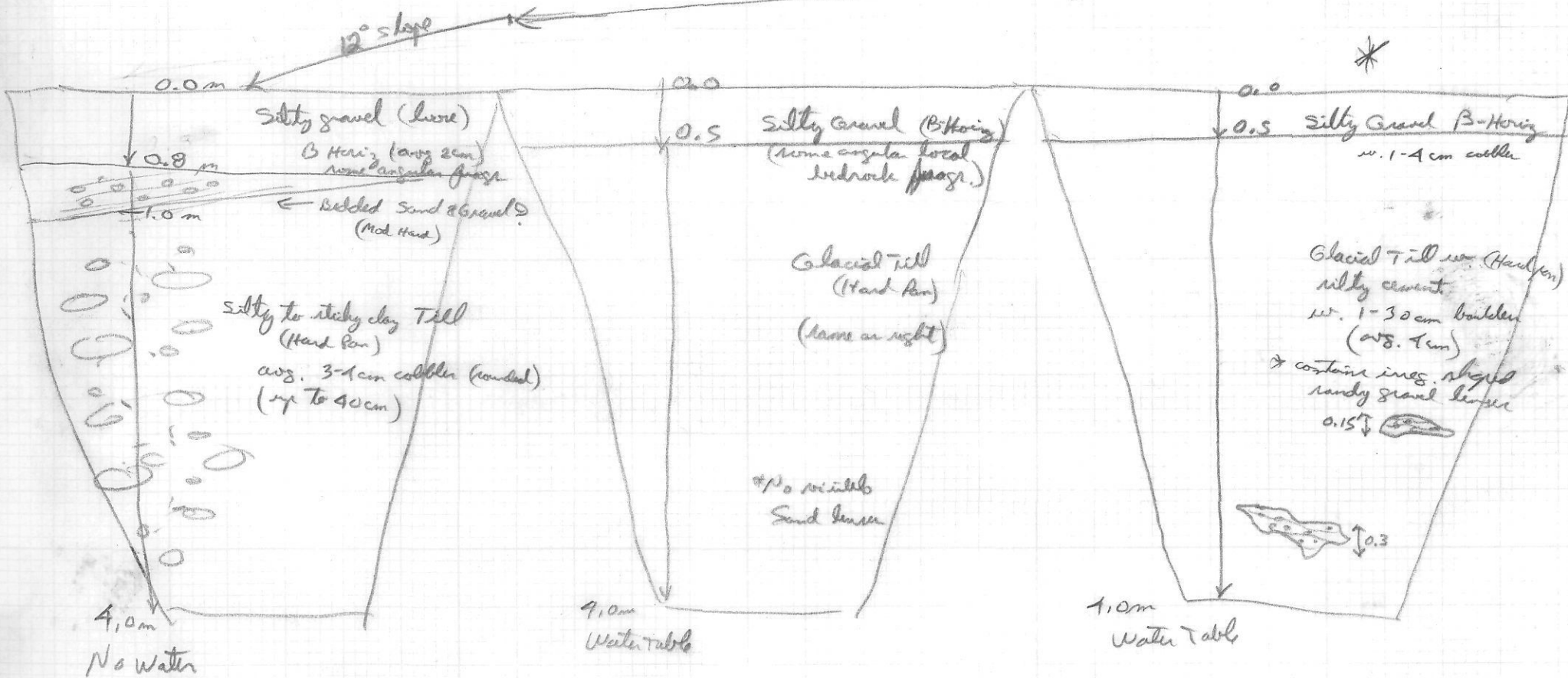
SOIL PROFILES

W

L. 10500N

6° slope

E

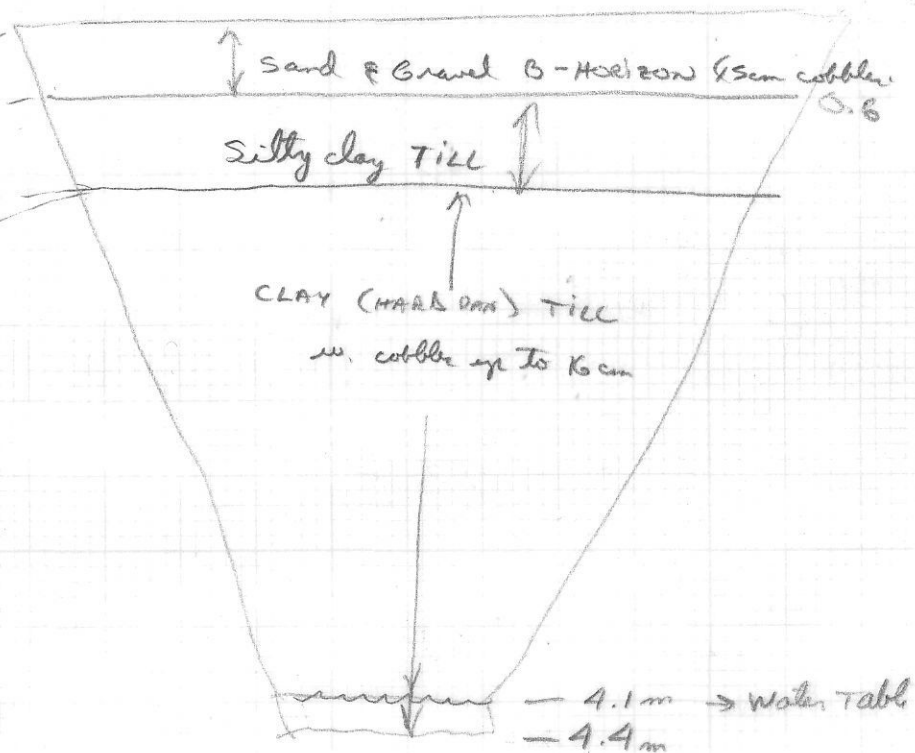
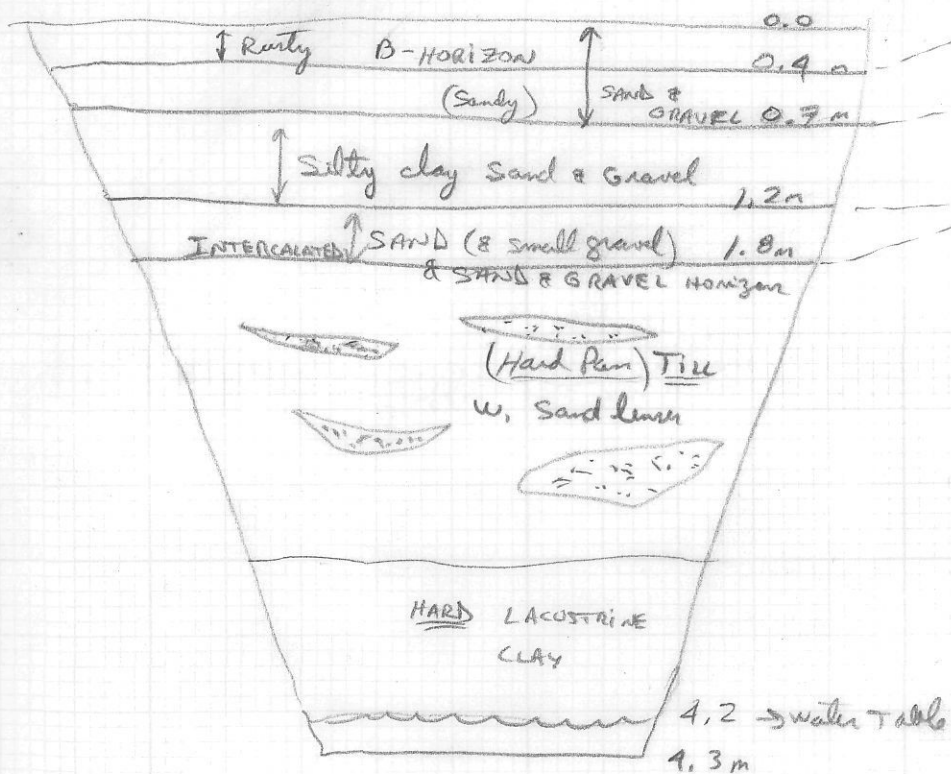


SOIL PROFILES

TEST PITS SOUTH OF SALMON RIVER

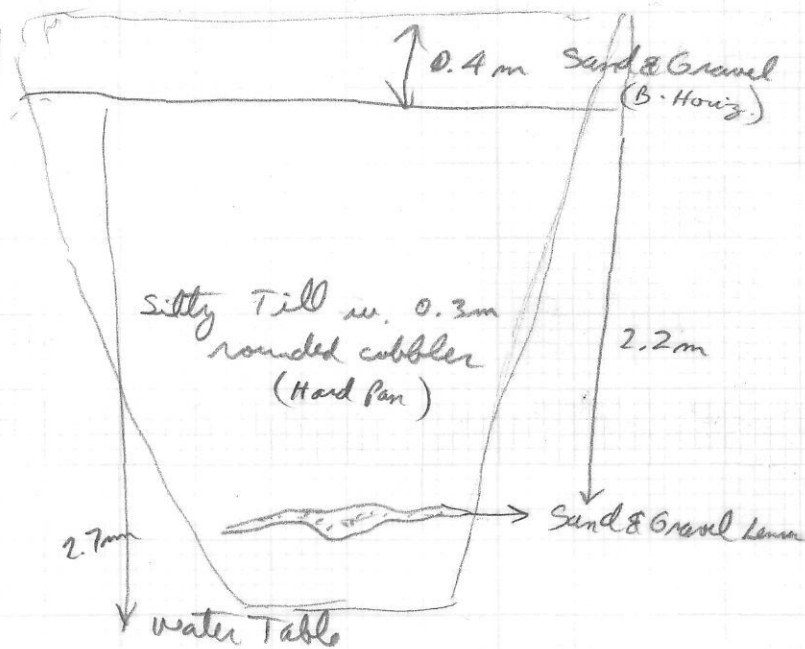
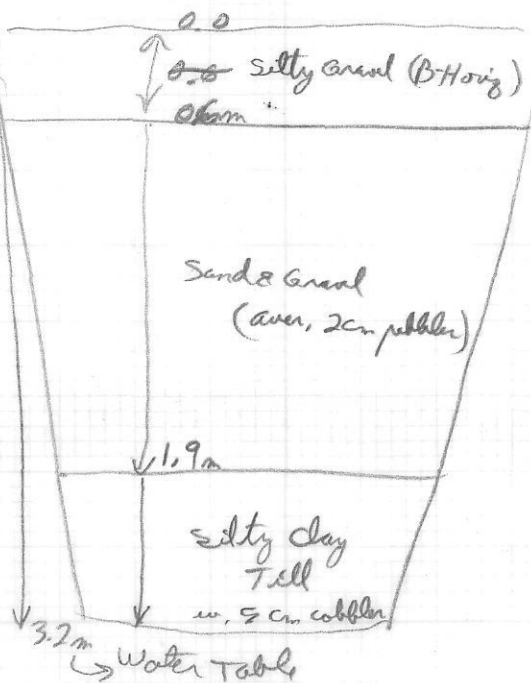
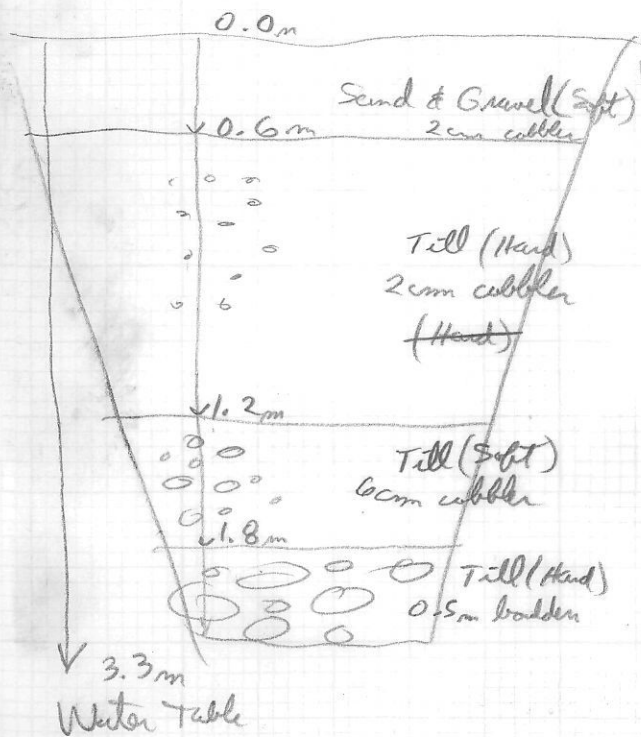
L. 10150 N, 8620 E

L. 10115 N, 8590 E



SOIL PROFILES

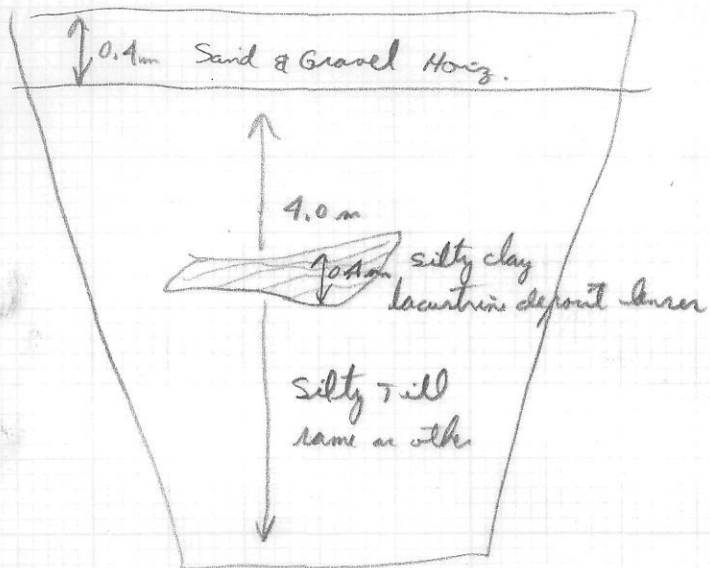
L. 10550 N



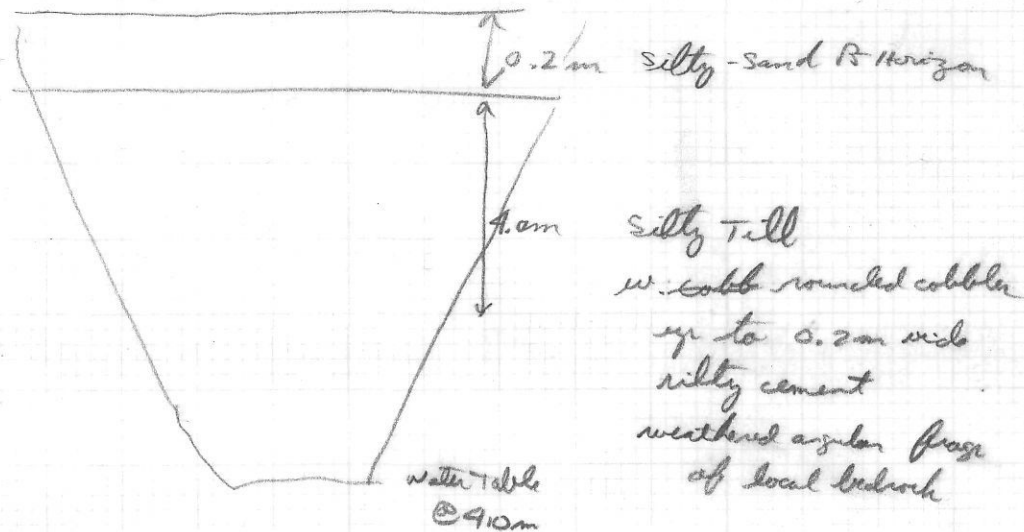
SOIL PROFILES

L, 10600 N

W



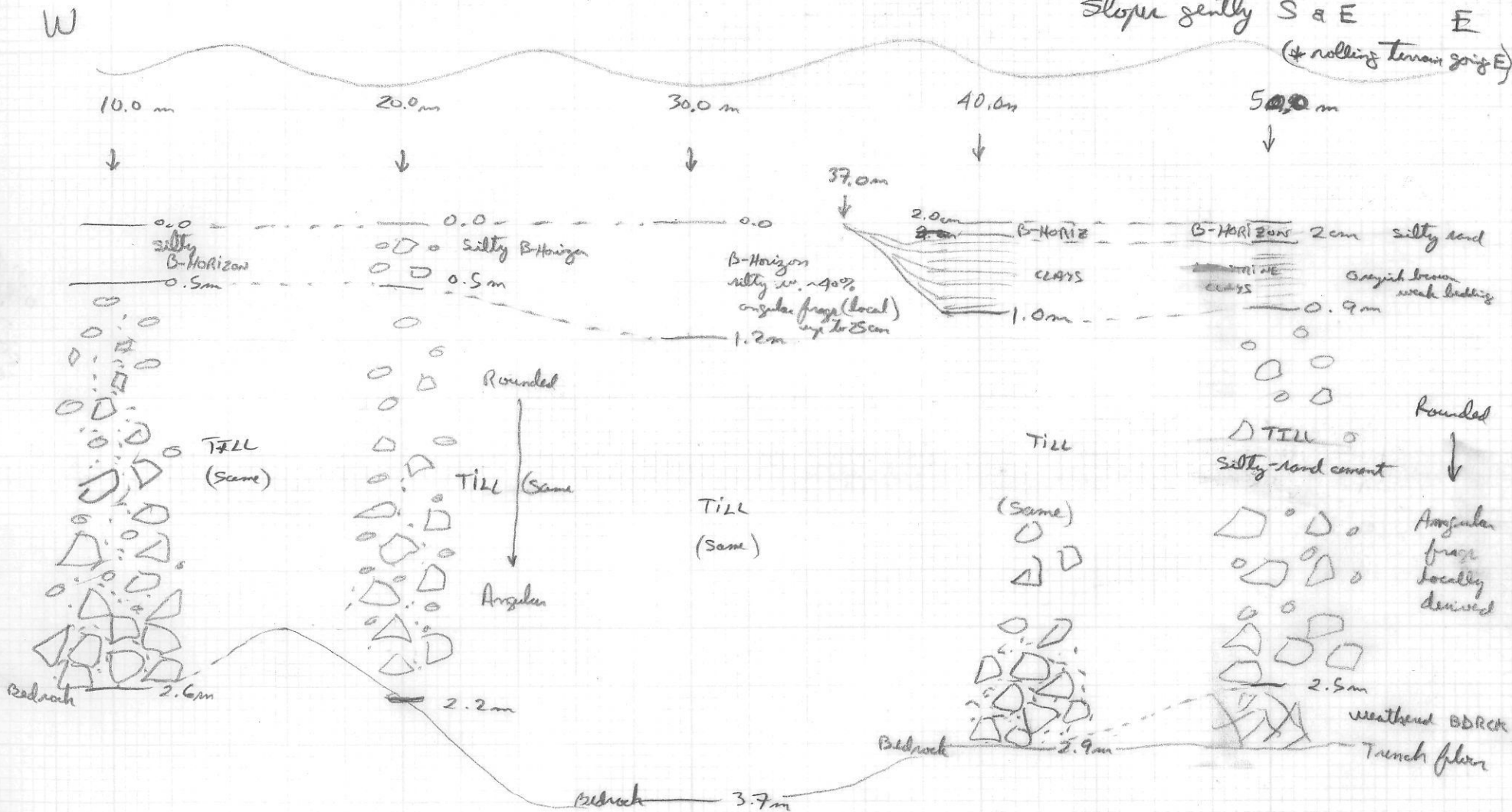
E



SOIL PROFILE

TR 90-03

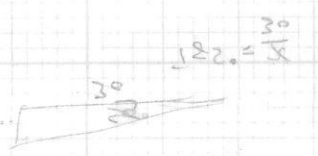
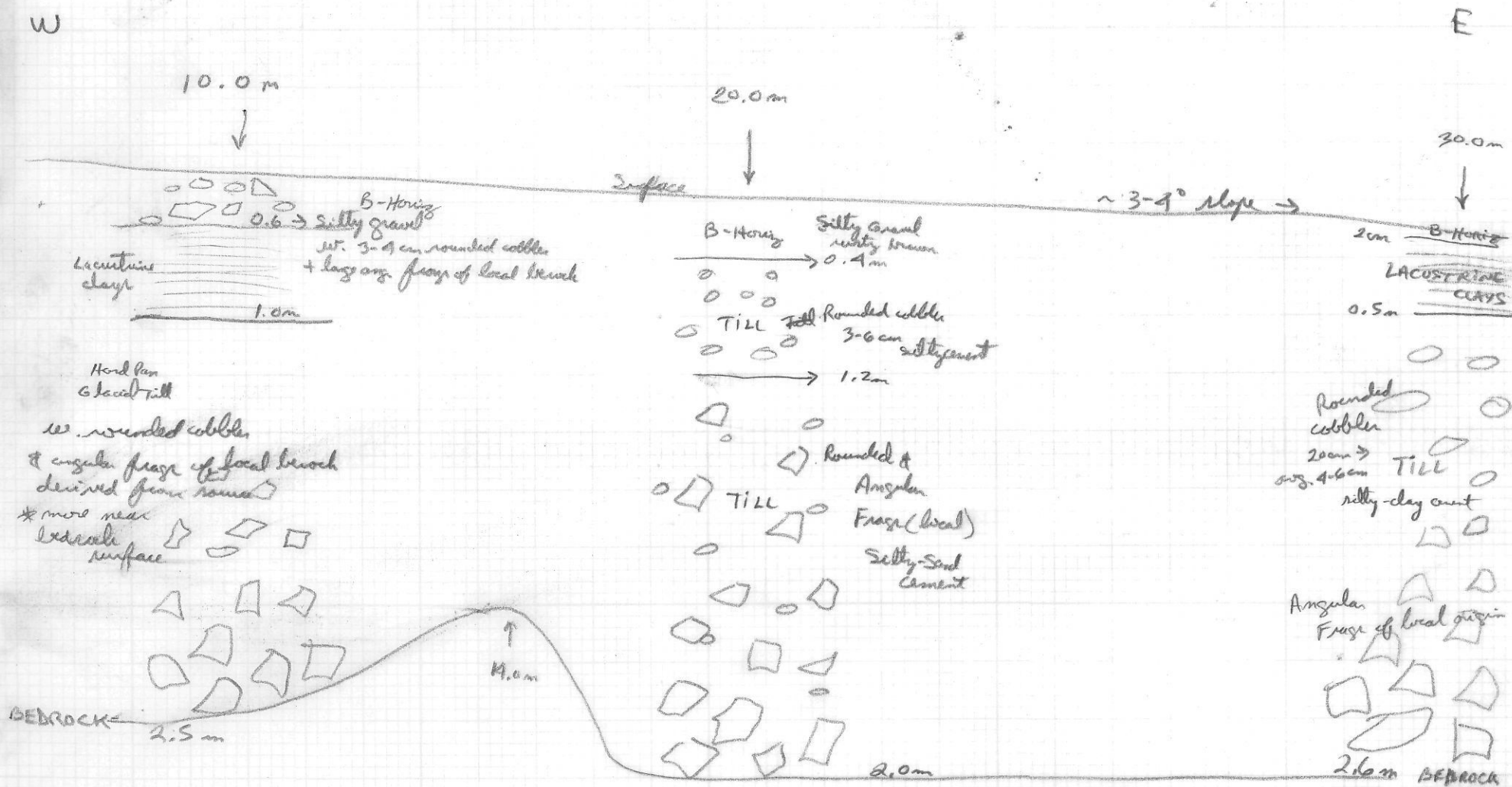
slope gently S & E
(+ rolling terrain going E)



* Above bedrock, till has injected itself between angular bedrock frags

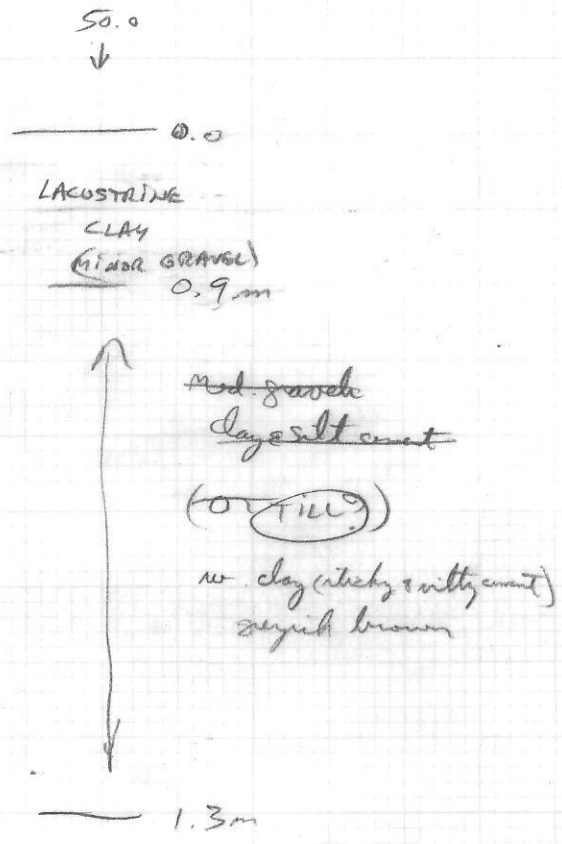
SOIL PROFILE

TR 90-04



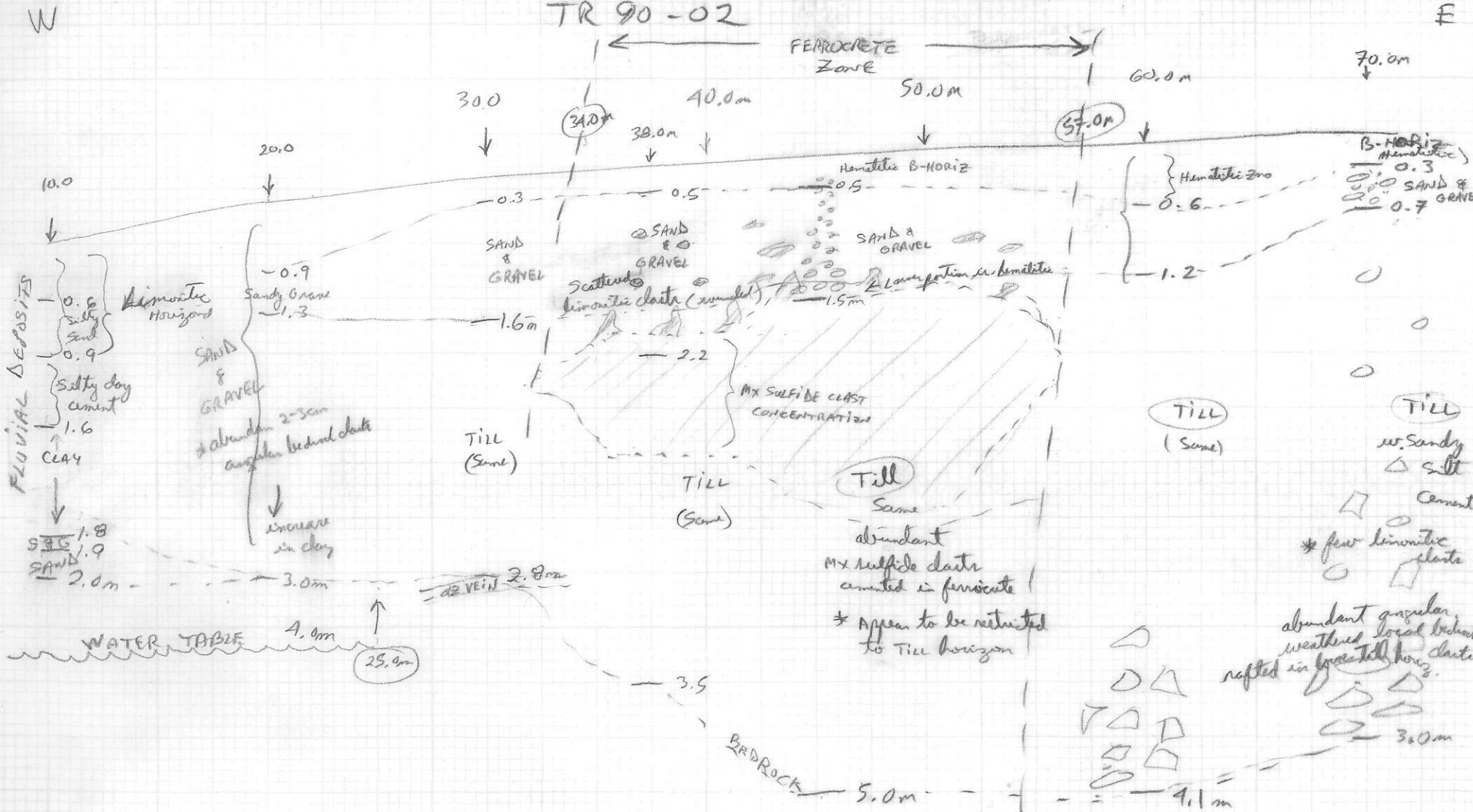
SOIL PROFILE

TR 90 - 01 (partially filled in)



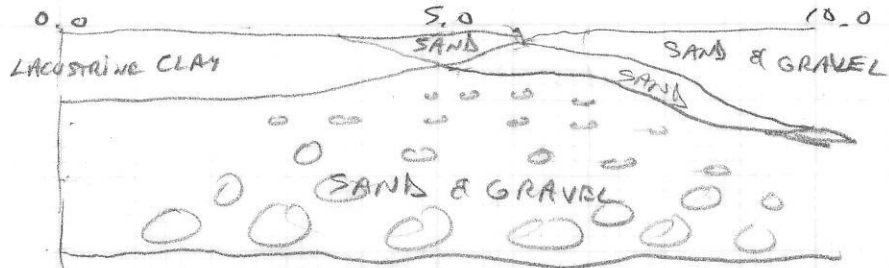
SOIL PROFILE

TR 90-02



TR 90-02 (CONT'D)

CREEK
(25.0 m)



SOIL PROFILE

TR90-06

N

S

TR90-02 (56.0m)
18.5m

17.0

SAND
GRAVEL

7.0m

TILL
(FERRICRETE)

3.3m

10.0m

LACUSTRINE CLAY

0.3

S&G.

0.6

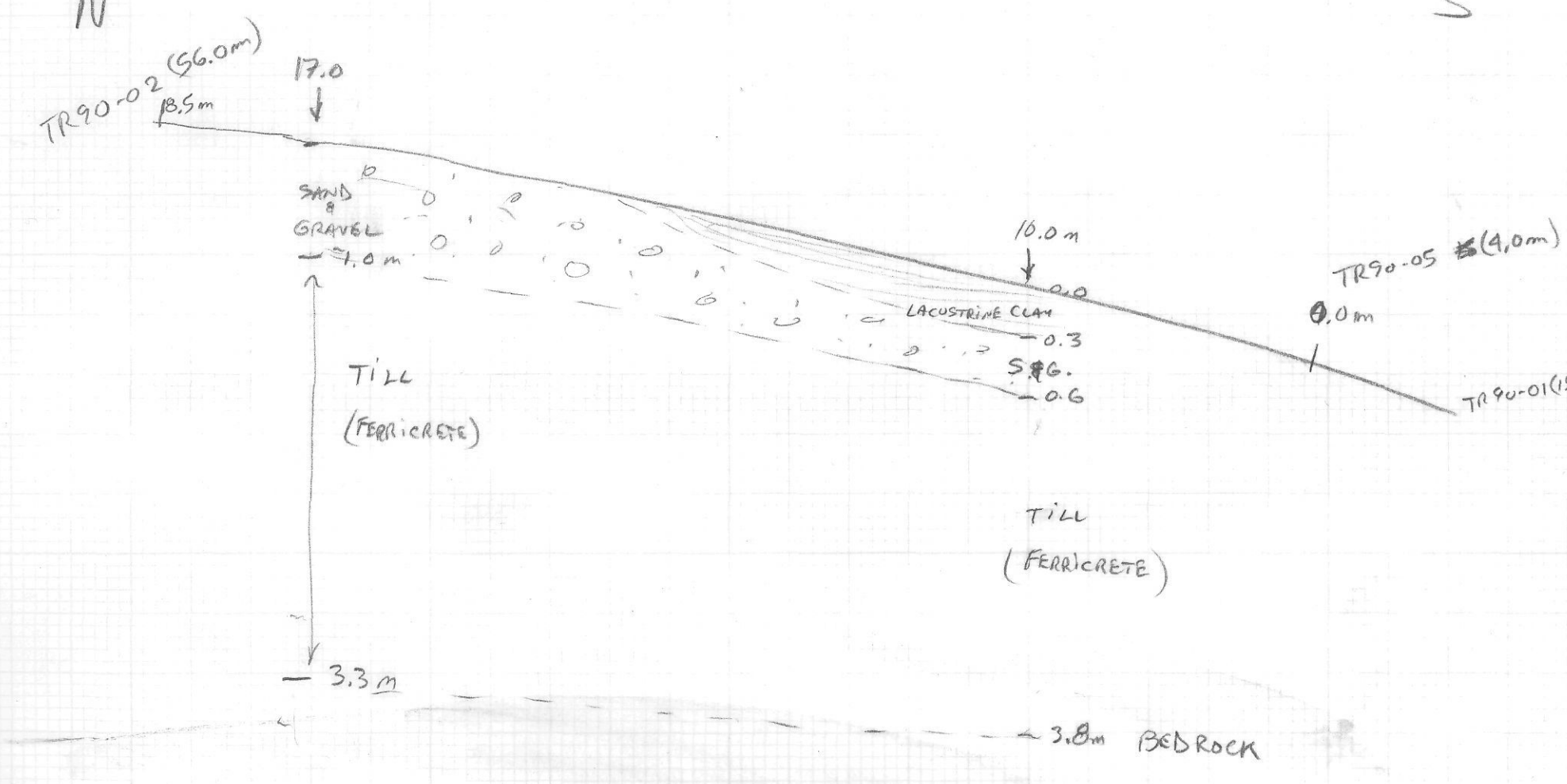
TILL
(FERRICRETE)

3.8m BEDROCK

TR90-05 (4.0m)

0.0m

TR90-01 (5)



SOIL PROFILE

TR 90-05 (partially filled-in)

W

E

