

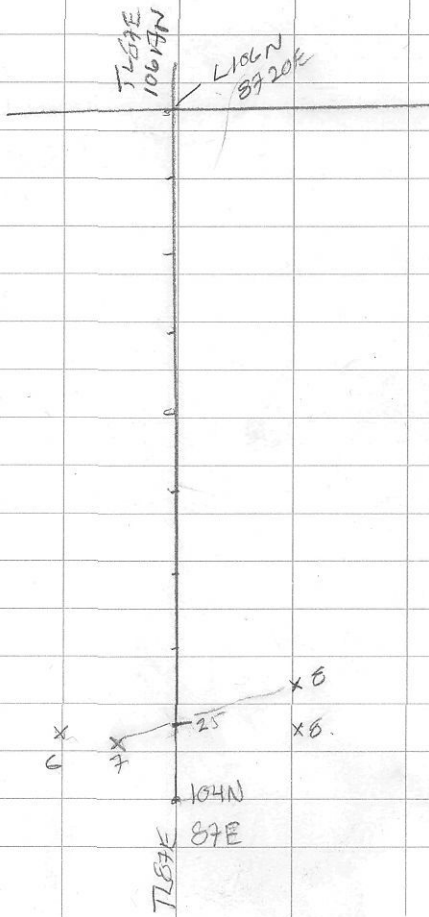
WINDY / Slowing L104N

104+25N 8680E

flood. 175m North Lit

106N, 8680E

860706



05/7/50

#8-15/7/50 - Alt. Diorite, with
 QU, laminaritic vugs

Dip 20.20m

TL dip pg. = ? magnetic.

-230°/26m to

TL 87E, 10425N

then 11m / 245° to #7

#7. Boulder - alt. int.?

Smaller to surface 20x20m

no zoning, dk grey

granodiorite, plg & f. crystals

#7 → #6 (10m int.) 280°

Sulphide rich boulder
 andesite host?

with QU, py, op?

Over the schist and andesite

boulder - ? 40x40 cm

276°
#6 → #1 (15m) upper part showing
boulder 35x20

- Sulphide rich Py, cp, Aspy
Eggs crystalline r.l.s. sulphide?
arsenopyrite?

#1 → #2

#2 1 metre, 190° South

#2 Boulder 30x20 similar to above
+ same sulphide

#2 → #8 - 156° (down slope)

boulder as previous

- massive Aspy? to 10cm thick

- Silica fracture - Boulder 1x.5m

arsenopyrite yellow stain

#3 - #4 -

locations same

host similar with some cp, Py

#4 to #5 - 250° down slope

boulder 7x5 - mineral pyrite
and silite host?

(over)

between 5.54 - 5.5m
size boulder of oxidized
concrete fragments.

Windy. 21/7/80

Soils-

10447, 8674E A ^{Soils} } pit about 15cm
B } mineralized 50cm

Rx Samples-

6813 massive Asp₇

6814 a QU. material. a P₅, G₅, Asp₇

6815 - location float-? on host. val

10450N, 8663E